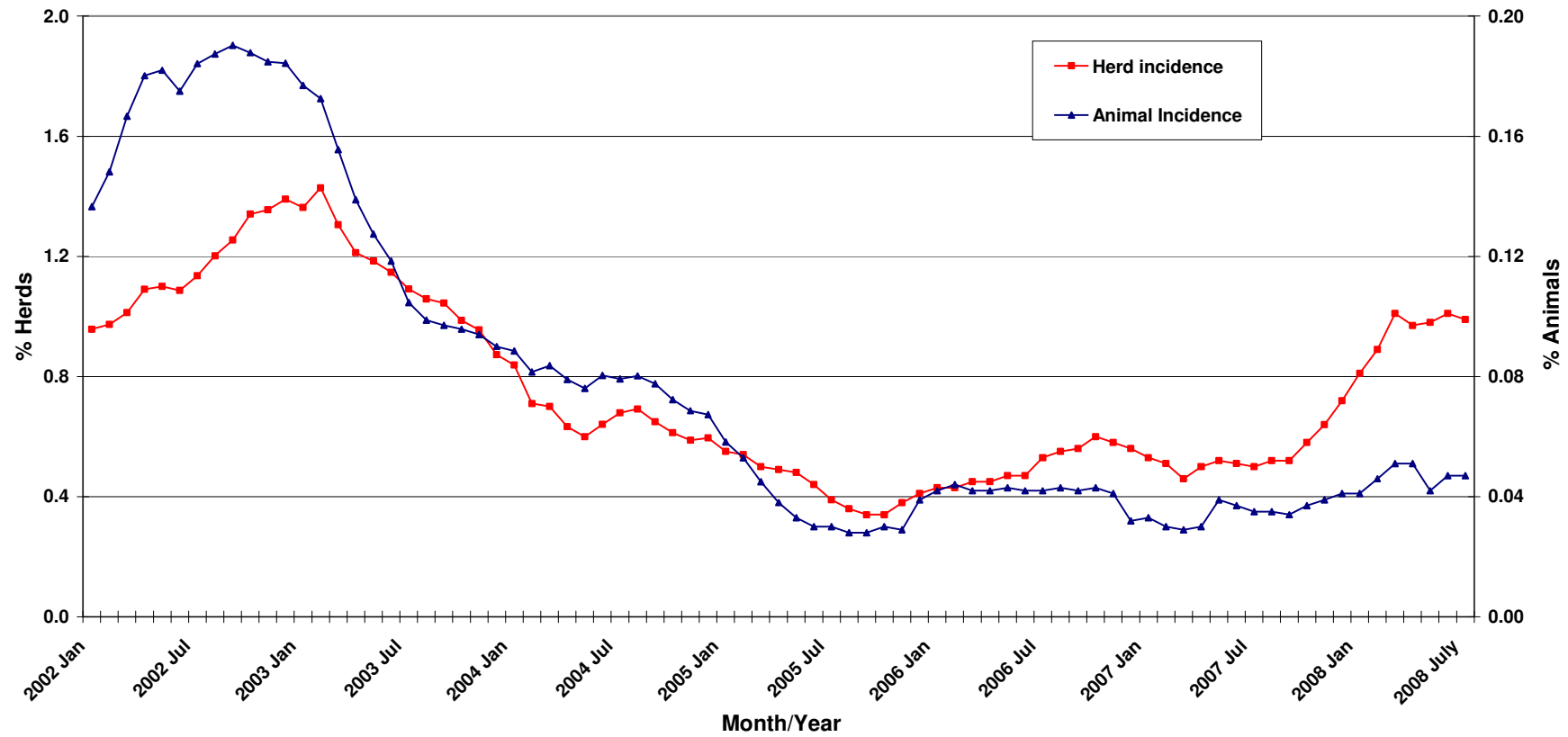
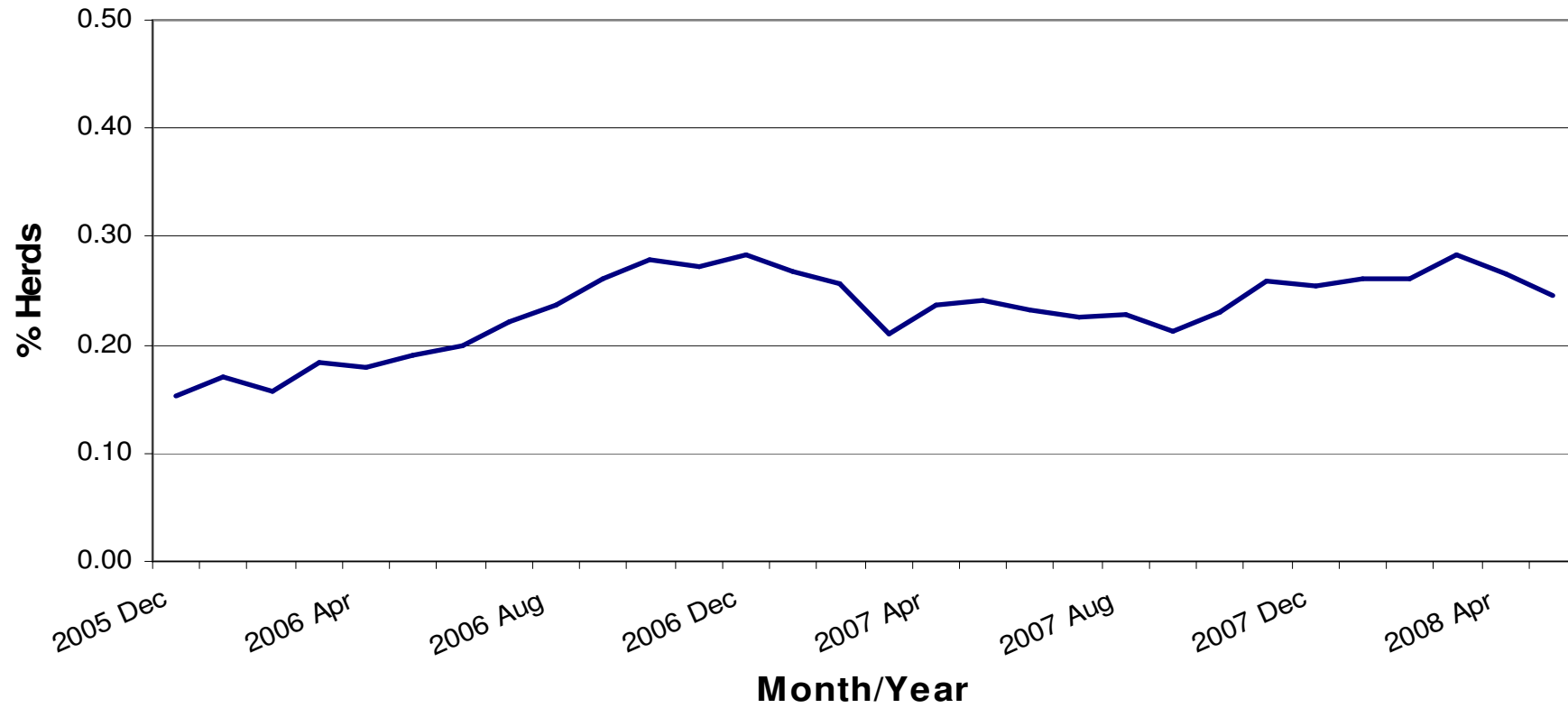


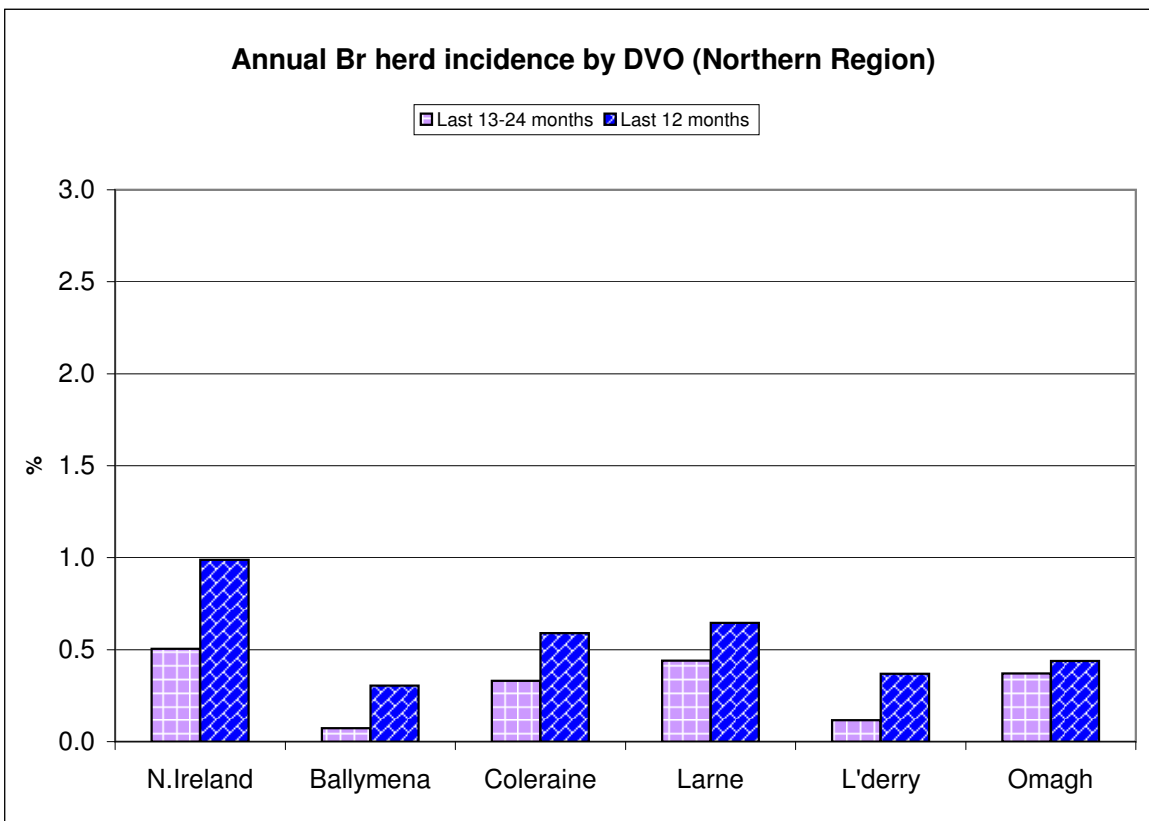
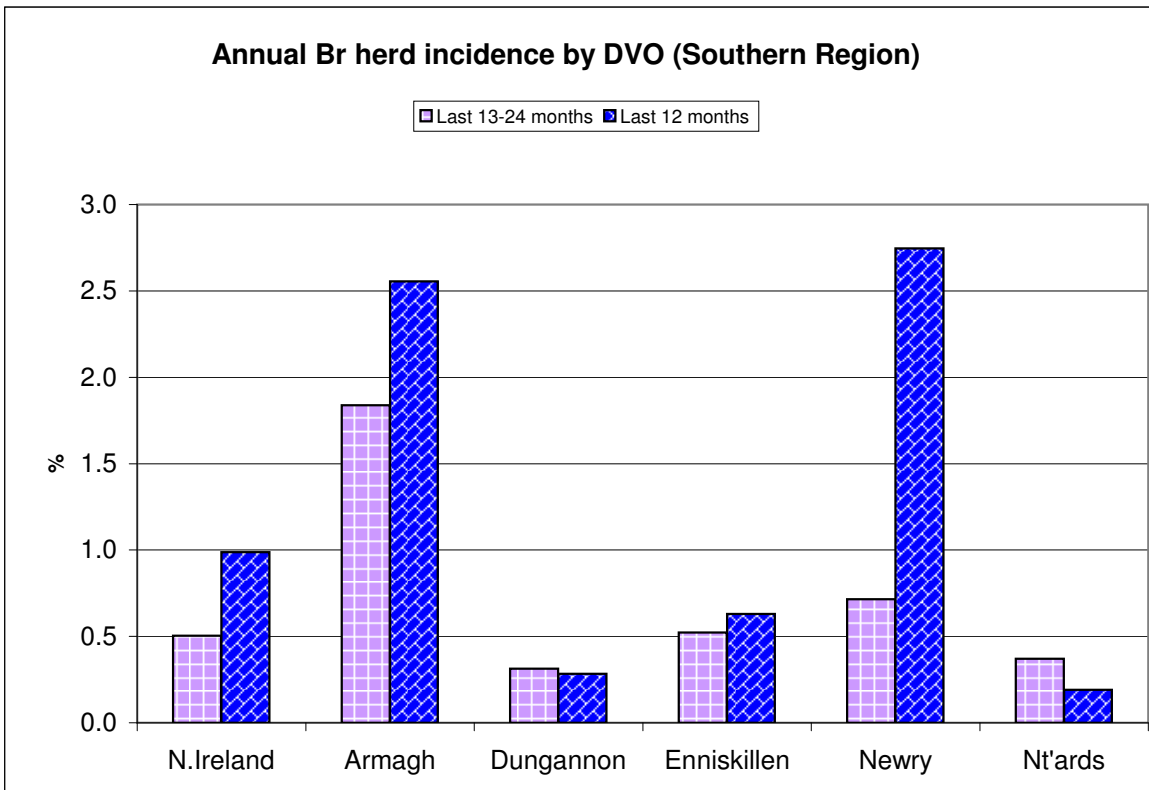
<b>Brucellosis: Statistics for July 2008</b>				
<b>Tests Completed</b>	Herds	<a href="#">Number of herds tested (any test), by DVO</a>	<a href="#">Cumulative Statistics</a>	
		<a href="#">Number of herds with herd-level test, by DVO</a>	<a href="#">Cumulative Statistics</a>	
		<a href="#">Number of herds with any risk test, by DVO</a>		
		<a href="#">Number of herds with herd-level risk test, by DVO</a>		
		<a href="#">Number of herds with herd-level restricted test, by DVO</a>		
		<a href="#">Number of herds monitored by BME or blood sampling</a>	<a href="#">Number of herds monitored by BME alone</a>	
	Animals	<a href="#">Total number of tests performed, by DVO</a>	<a href="#">Cumulative Statistics</a>	<a href="#">Premovement testing</a>
		<a href="#">Total number of animals tests, by DVO</a>	<a href="#">Cumulative Statistics</a>	
		<a href="#">Total number of restricted herd tests, by DVO</a>	<a href="#">Number of animals tested</a>	
		<a href="#">Total number of herd tests, by DVO</a>	<a href="#">Number of animals tested</a>	
		<a href="#">Total number of individual tests, by DVO</a>	<a href="#">Number of animals tested</a>	
		<a href="#">Total number of CTA tests, by DVO</a>	<a href="#">Number of animals tested</a>	
		<a href="#">Total number of CTT tests, by DVO</a>	<a href="#">Number of animals tested</a>	
		<a href="#">Total number of animals tested, by DVO</a>		
<a href="#">Current total animals under Br surveillance</a>	<a href="#">Number of animals tested by BME alone</a>			
<b>Summary Statistics</b>	<a href="#">Herds with Br reactors during month, by DVO</a>	<a href="#">Cumulative Statistics</a>	<a href="#">APT</a>	
	<a href="#">Number of new reactor herds, by DVO</a>	<a href="#">Cumulative Statistics</a>	<a href="#">Negative-in-contacts</a>	
	<a href="#">Number of new reactor animals, by DVO</a>		<a href="#">Reactor removal times</a>	
	<a href="#">Herd Prevalance</a>		<a href="#">Confirmed infection</a>	
	<a href="#">Herd Incidence</a>			
	<a href="#">Animal Incidence</a>			
	<a href="#">Number of reactor animals by month and by DVO</a>			
	<a href="#">Number of new reactor herds by month and by DVO</a>			
	<a href="#">Total number of all reactor herds in 2003, by DVO</a>			
<b>Summary Charts</b>	<a href="#">Current Animal Incidence Charts</a>	<a href="#">Monthly BR reactors chart</a>		
	<a href="#">Yearly Animal Incidence Charts</a>	<a href="#">BR new herd breakdowns chart</a>		
	<a href="#">Current Herd Incidence Charts</a>	<a href="#">BR herd &amp; animal incidence</a>		
	<a href="#">Yearly Herd Incidence Charts</a>			

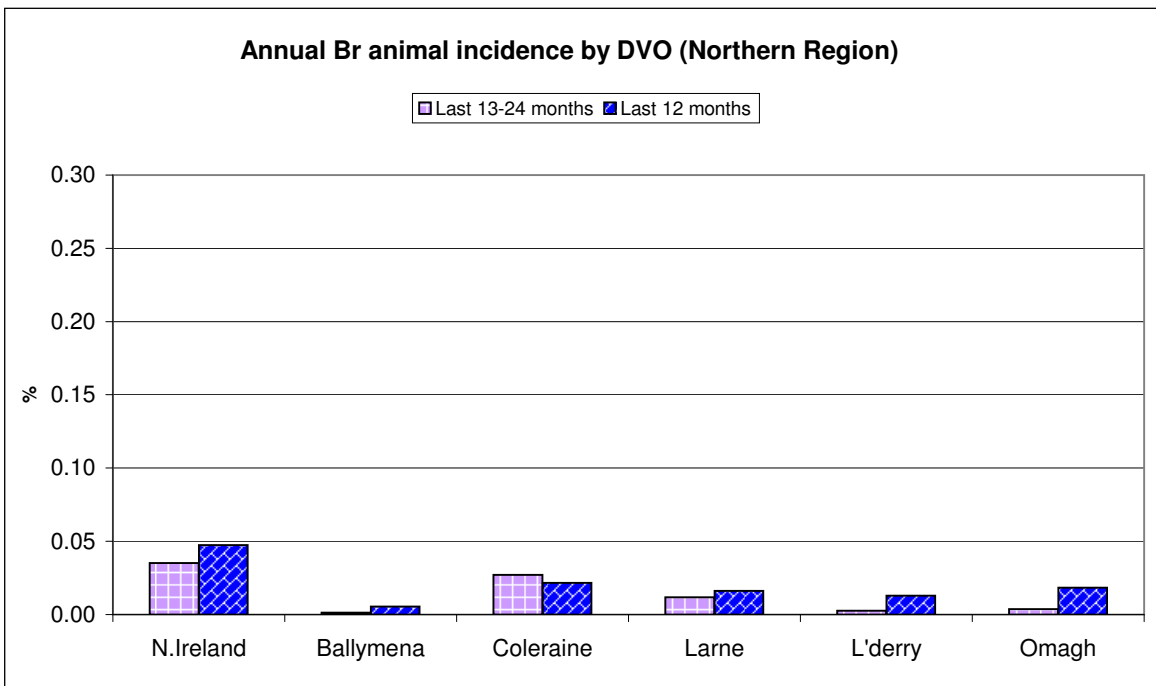
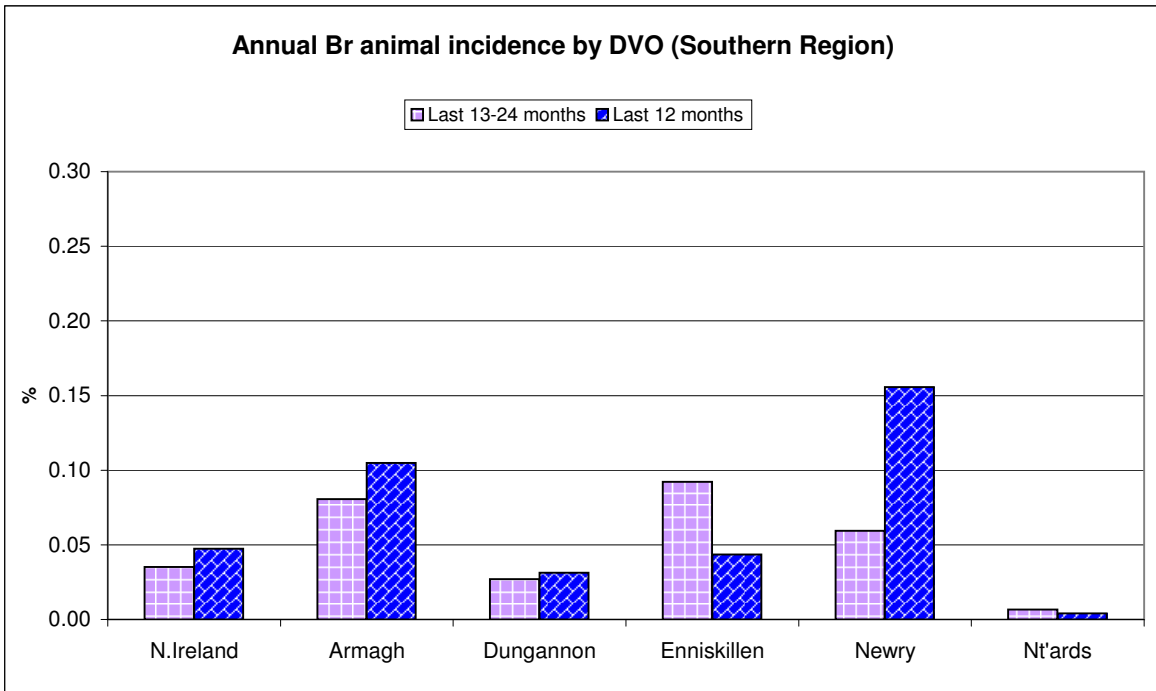
**BR Herd and Animal Incidence**  
 (12 month moving average: January 2002 to July 2008)



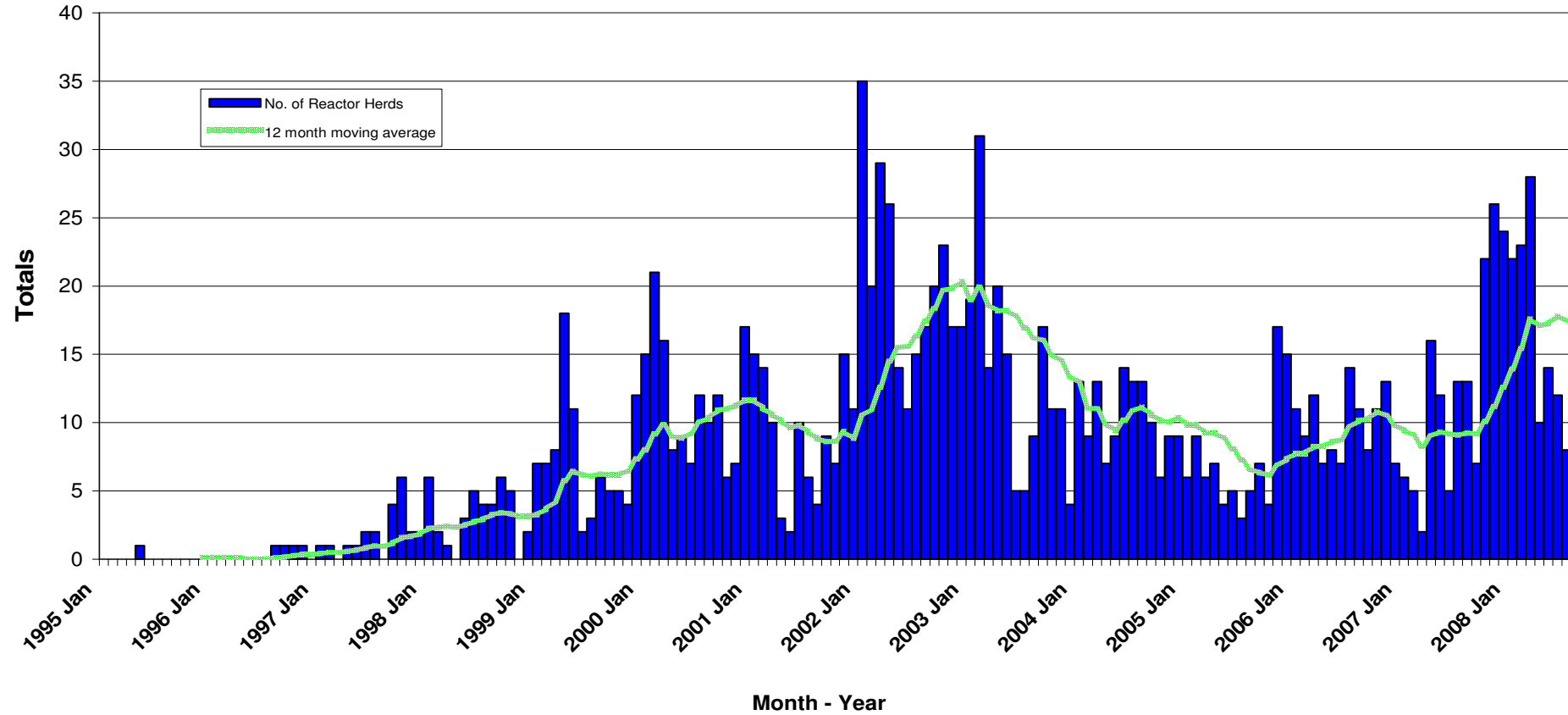
### BR annual herd incidence where infection confirmed by culture: December 2005 to May 2008



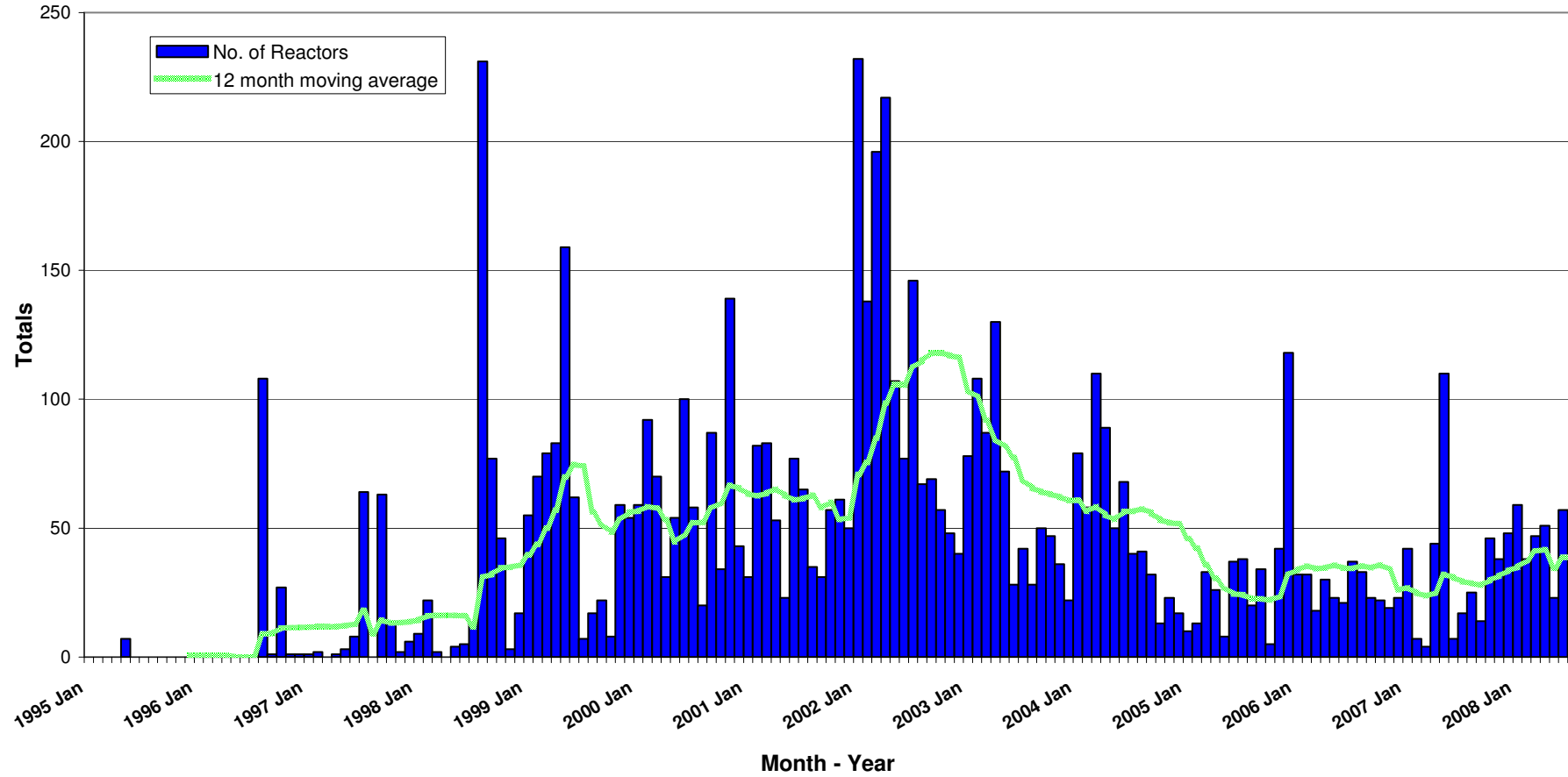


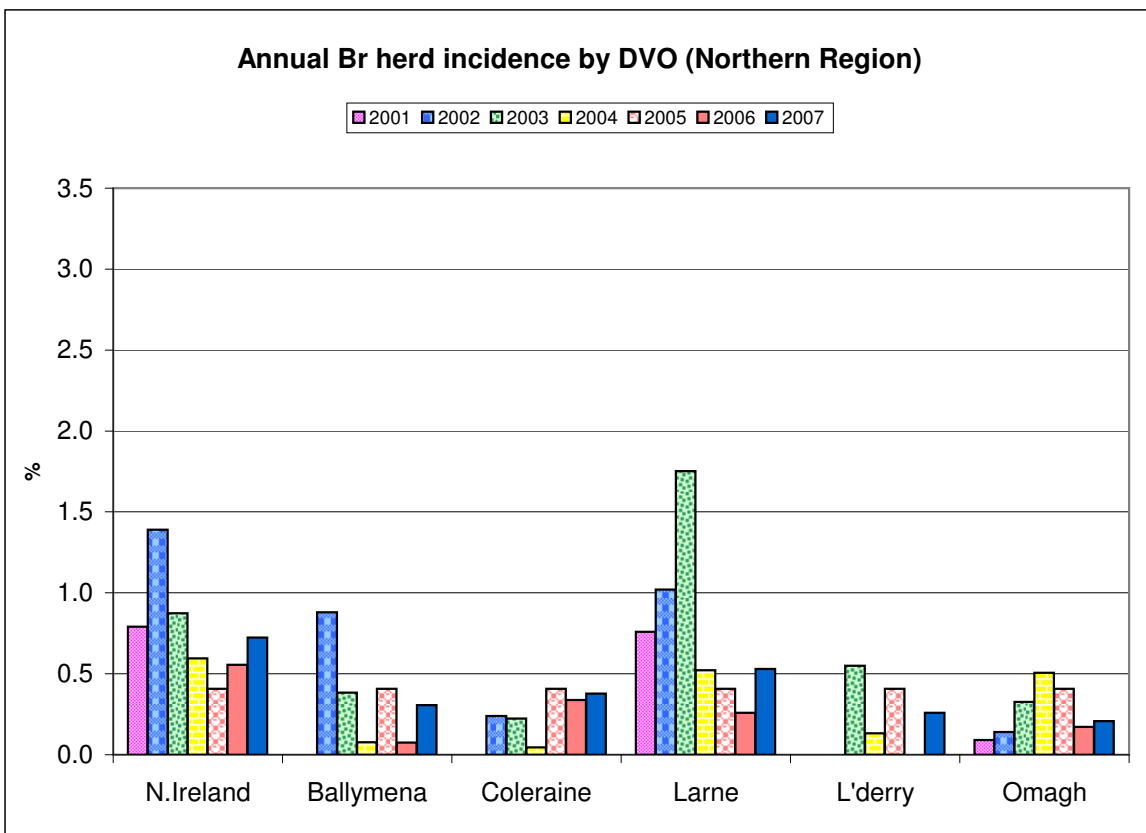
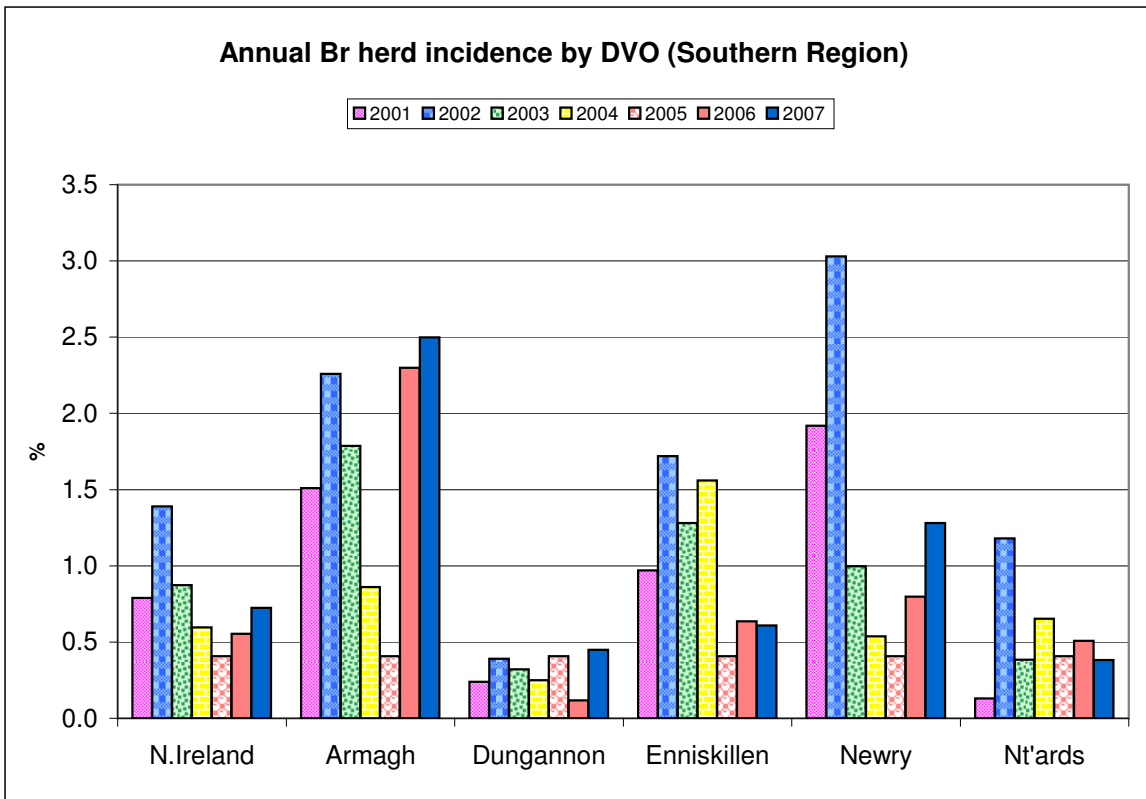


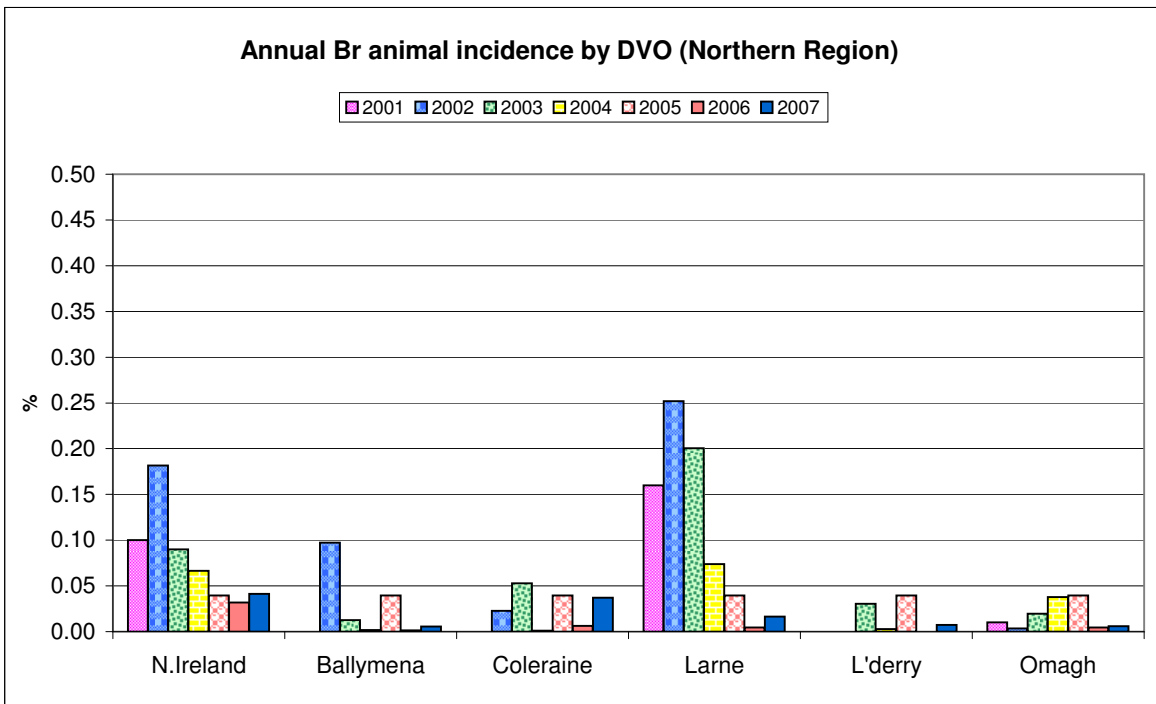
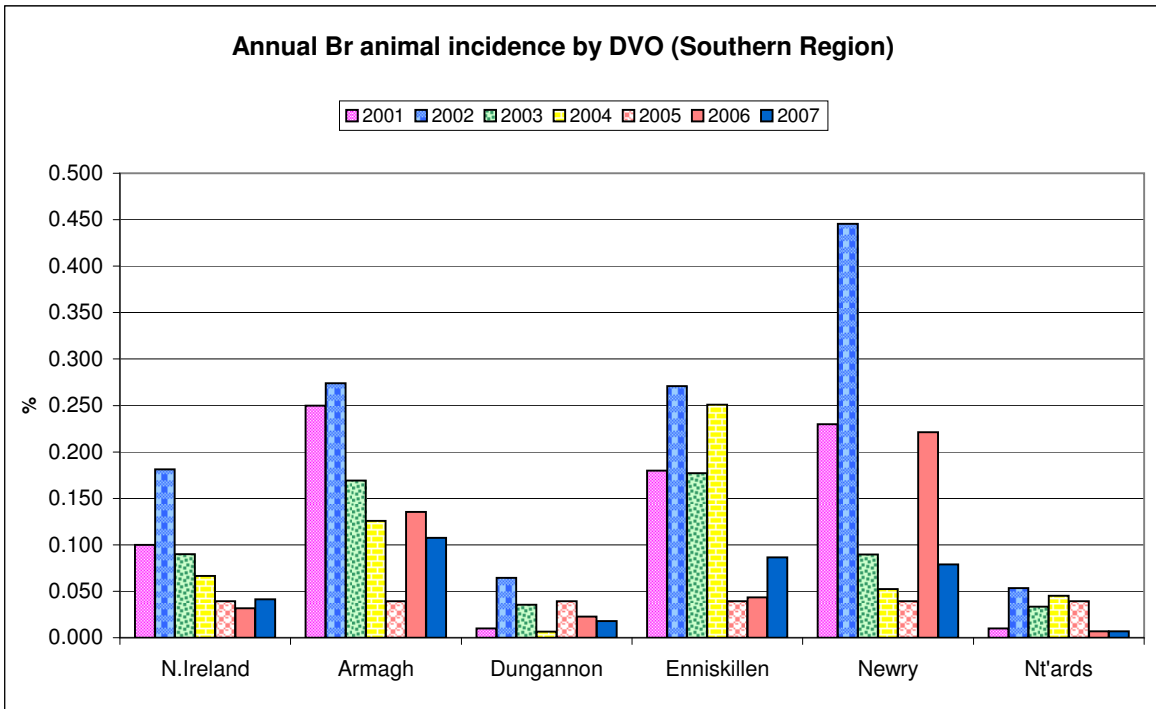
**New BR Reactor Herds: January 1995 to July 2008**



### BR Reactors: January 1995 to July 2008







**Month = July 2008**

Ref.	<b>Total</b>	<b>Armagh</b>	<b>Ballymena</b>	<b>Coleraine</b>	<b>Dungannon</b>	<b>Enniskillen</b>	<b>Larne</b>	<b>L'derry</b>	<b>Newry</b>	<b>Nt'ards</b>	<b>Omagh</b>	
d1	<b>No. of herds with Br reactors during month</b>	<b>11</b>	<b>1</b>	<b>0</b>	<b>1</b>	<b>0</b>	<b>1</b>	<b>0</b>	<b>0</b>	<b>8</b>	<b>0</b>	<b>0</b>
d2	<b>No. of new reactor herds during month</b>	<b>8</b>	<b>1</b>	<b>0</b>	<b>1</b>	<b>0</b>	<b>1</b>	<b>0</b>	<b>0</b>	<b>5</b>	<b>0</b>	<b>0</b>
d3	No. of new reactor herds since start of year	117	22	0	8	1	9	5	2	62	0	8
d4	No. of new reactor herds in the previous 12 months	209	48	4	14	7	19	10	3	88	3	13
d26	No. of new reactor herds in previous 13-24 months	109	35	1	8	8	16	7	1	23	6	4
d5	<b>No. of Br reactor animals during month</b>	<b>18</b>	<b>2</b>	<b>0</b>	<b>1</b>	<b>0</b>	<b>1</b>	<b>0</b>	<b>0</b>	<b>14</b>	<b>0</b>	<b>0</b>
d6	No. of Br reactor animals since start of year	293	55	0	10	19	29	7	3	151	0	19
d7	No. of reactor animals in the previous 12 months	464	99	4	28	33	50	15	5	201	4	25
d27	No. of reactor animals in previous 13-24 months	351	77	1	36	30	107	11	1	76	7	5
d8	<b>Herd Prevalence (%)</b>	<b>0.68</b>	0.47	0.00	0.95	0.00	0.71	0.00	0.00	1.63	0.00	0.00
d20	<b>Cumulative herd incidence this year (%)</b>	<b>0.81</b>	1.47	0.00	0.49	0.06	0.44	0.49	0.41	2.56	0.00	0.41
d9	<b>Annual herd incidence over the last 12 months (%)</b>	<b>0.99</b>	2.55	0.30	0.59	0.28	0.63	0.65	0.37	2.75	0.19	0.44
d28	<b>Annual herd incidence over the last 13-24 months (%)</b>	<b>0.50</b>	1.84	0.07	0.33	0.31	0.52	0.44	0.12	0.71	0.71	0.37
d10	<b>2007 Herd Incidence (%)</b>	<b>0.72</b>	2.50	0.31	0.38	0.45	0.61	0.53	0.26	1.28	0.38	0.21
d11	<b>2006 Herd Incidence (%)</b>	<b>0.56</b>	2.30	0.07	0.34	0.12	0.64	0.26	0.00	0.80	0.51	0.17
d44	<b>2005 Herd Incidence (%)</b>	<b>0.41</b>	0.32	0.22	0.21	0.27	0.91	0.38	0.24	0.55	0.18	0.33
d29	<b>2004 Herd Incidence (%)</b>	<b>0.60</b>	0.86	0.08	0.04	0.25	1.56	0.52	0.13	0.54	0.65	0.51
d15	<b>2003 Herd Incidence (%)</b>	<b>0.87</b>	1.79	0.38	0.22	0.32	1.28	1.75	0.55	1.00	0.38	0.33
d21	<b>Cumulative animal incidence this year (%)</b>	<b>0.039</b>	0.072	0.000	0.010	0.025	0.035	0.010	0.011	0.148	0.000	0.019
d12	<b>Annual animal incidence over last 12 months (%)</b>	<b>0.047</b>	0.105	0.006	0.022	0.031	0.043	0.016	0.013	0.156	0.004	0.018
d30	<b>Annual animal incidence over last 13-24 months (%)</b>	<b>0.035</b>	0.081	0.001	0.027	0.027	0.092	0.012	0.003	0.059	0.007	0.004
d13	<b>2007 Animal Incidence (%)</b>	<b>0.041</b>	0.107	0.006	0.037	0.018	0.086	0.016	0.008	0.079	0.007	0.006
d14	<b>2006 Animal Incidence (%)</b>	<b>0.032</b>	0.135	0.001	0.006	0.023	0.043	0.004	0.000	0.221	0.007	0.004
d45	<b>2005 Animal Incidence (%)</b>	<b>0.039</b>	0.105	0.004	0.004	0.008	0.179	0.009	0.005	0.031	0.006	0.009
d31	<b>2004 Animal Incidence (%)</b>	<b>0.067</b>	0.126	0.002	0.001	0.007	0.251	0.074	0.003	0.052	0.045	0.038
d16	<b>2003 Animal Incidence (%)</b>	<b>0.090</b>	0.169	0.013	0.053	0.035	0.177	0.201	0.030	0.090	0.033	0.019

d33	<b>APT during current month</b>	<b>0.27</b>	0.19	0.00	0.16	0.00	0.12	0.00	0.00	1.03	0.00	0.00
d22	<b>APT since start of year</b>	<b>0.38</b>	0.54	0.00	0.12	0.27	0.29	0.11	0.11	1.20	0.00	0.19
d17	<b>Current 12 month moving average APT</b>	<b>0.35</b>	0.58	0.05	0.19	0.26	0.29	0.14	0.11	1.00	0.04	0.14
d19	<b>2007 APT</b>	<b>0.32</b>	0.60	0.05	0.35	0.16	0.60	0.14	0.08	0.57	0.06	0.05
d51	<b>2006 APT</b>	<b>0.24</b>	0.81	0.01	0.06	0.19	0.28	0.04	0.00	0.45	0.07	0.04
d46	<b>2005 APT</b>	<b>0.31</b>	0.77	0.04	0.04	0.07	1.05	0.07	0.05	0.23	0.05	0.07
d32	<b>2004 APT</b>	<b>0.50</b>	0.70	0.02	0.01	0.06	1.49	0.55	0.03	0.35	0.38	0.29
d18	<b>2003 APT</b>	<b>0.66</b>	0.91	0.11	0.52	0.35	1.13	1.50	0.28	0.50	0.29	0.18
d23	<b>No. negative in contacts since start of year</b>	<b>4181</b>	564	0	37	999	364	5	95	1805	1	311
d25	<b>No. negative in contacts during 2007</b>	<b>6183</b>	1300	2	1187	183	765	698	1	1972	4	71
d52	<b>No. negative in contacts during 2006</b>	<b>4673</b>	2888	1	3	116	416	0	8	1241	0	0
d47	<b>No. negative in contacts during 2005</b>	<b>2580</b>	46	1	3	205	1314	82	0	313	237	379
d34	<b>No. negative in contacts during 2004</b>	<b>6035</b>	1428	1	5	64	1984	1043	3	894	242	371
d24	<b>No. negative in contacts during 2003</b>	<b>10798</b>	2129	314	389	389	2085	2991	105	1616	719	61
d37	<b>Reactor removal time 2008</b>	<b>14.4</b>										
d55	<b>Reactor removal time 2007</b>	<b>12.3</b>	12.3	14.4	11.6	12.3	14.4	12.3	13.0	11.0	11.0	10.3
d50	<b>Reactor removal time 2006</b>	<b>12.3</b>	13.0	8.9	14.3	8.9	15.0	11.9	0.0	10.9	11.6	11.9
d35	<b>Reactor removal time 2005</b>	<b>14.4</b>	19.7	11.0	13.7	8.9	13.0	11.3	12.1	10.3	9.6	11.9
d36	<b>Reactor removal time 2004</b>	<b>14.4</b>	12.3	9.0	20.6	18.1	15.1	11.0	8.2	14.4	19.2	17.8
d38	<b>Reactor herds with infection confirmed this year</b>	<b>30</b>	7	0	1	1	4	0	1	14	0	2
d39	<b>Reactor herds with infection not confirmed this year</b>	<b>96</b>	16	0	8	1	5	6	2	52	0	6
d40	<b>% Reactor herds with infection confirmed this year</b>	<b>23.8</b>	30.4	0.0	11.1	50.0	44.4	0.0	33.3	21.2	0.0	25.0
d56	<b>% Reactor herds with infection confirmed in 2007</b>	<b>37.1</b>	17.4	0.0	37.5	36.4	80.0	44.4	0.0	52.6	0.0	14.3
d53	<b>% Reactor herds with infection confirmed in 2006</b>	<b>54.1</b>	75.6	0.0	0.0	66.7	66.7	25.0	0.0	53.8	0.0	0.0
d48	<b>% Reactor herds with infection confirmed in 2005</b>	<b>45.2</b>	100.0	0.0	0.0	0.0	73.3	33.3	0.0	40.0	50.0	45.5
d41	<b>Reactor animals with infection confirmed</b>	<b>62</b>	12	0	1	5	9	0	1	31	0	3
d42	<b>Reactor animals with infection not confirmed</b>	<b>120</b>	22	0	8	1	6	7	2	66	0	8
d43	<b>% Reactor animals with infection confirmed</b>	<b>34.1</b>	35.3	0.0	11.1	83.3	60.0	0.0	33.3	32.0	0.0	27.3
d57	<b>% Reactor animals with infection confirmed in 2007</b>	<b>41.6</b>	25.0	0.0	28.6	50.0	75.0	54.5	0.0	46.7	0.0	12.5
d54	<b>% Reactor animals with infection confirmed in 2006</b>	<b>64.1</b>	78.5	0.0	0.0	80.0	75.0	25.0	0.0	60.5	0.0	0.0

d49	<b>% Reactor animals with infection confirmed in 2005</b>	<b>58.3</b>	100.0	0.0	0.0	0.0	79.7	50.0	0.0	47.6	60.0	45.5
d58	<b>No. of new BR herd breakdowns during current year which were confirmed by bacteriological culture</b>	<b>19</b>	5	0	1	0	4	0	1	6	0	2
d66	<b>No. of new BR herd breakdowns during last 12 months which were confirmed by bacteriological culture</b>	<b>51</b>	10	0	3	3	13	1	1	17	0	3
d59	<b>No. of new BR herd breakdowns during 2007 confirmed by bacteriological culture</b>	<b>53</b>	9	0	3	4	14	3	0	19	0	1
d60	<b>No. of new BR herd breakdowns during 2006 confirmed by bacteriological culture</b>	<b>60</b>	31	0	0	2	11	1	0	15	0	0
d61	<b>No. of new BR herd breakdowns during 2005 confirmed by bacteriological culture</b>	<b>33</b>	2	0	0	0	20	2	0	5	1	3
d62	<b>Cumulative culture confirmed herd incidence for 2008 (%)</b>	<b>0.13</b>	0.33	0.00	0.06	0.00	0.20	0.00	0.21	0.25	0.00	0.10
d67	<b>Culture confirmed herd incidence for last 12 months (%)</b>	<b>0.24</b>	0.53	0.00	0.13	0.12	0.43	0.06	0.12	0.53	0.00	0.10
d63	<b>Culture confirmed herd incidence 2007 (%)</b>	<b>0.25</b>	0.49	0.00	0.13	0.16	0.47	0.20	0.00	0.59	0.00	0.03
d64	<b>Culture confirmed herd incidence 2006 (%)</b>	<b>0.28</b>	1.62	0.00	0.00	0.08	0.37	0.06	0.00	0.46	0.00	0.00
d65	<b>Culture confirmed herd incidence 2005 (%)</b>	<b>0.15</b>	0.11	0.00	0.00	0.00	0.65	0.13	0.00	0.15	0.06	0.10

**Brucellosis: number of reactor herds by month and by DVO in 2008 and unique herd breakdowns during the year**

2008	DVO_CODE											
Year	Month	Armagh	Ballymena	Coleraine	Dungannon	Enniskillen	Larne	L'Derry	Newry	Nt'Ards	Omagh	Total
2008	1	5	0	2	0	1	0	0	13	0	1	22
2008	2	3	0	0	0	2	4	1	10	0	3	23
2008	3	8	0	2	0	3	0	1	13	0	1	28
2008	4	0	0	2	1	2	1	0	2	0	2	10
2008	5	2	0	1	0	0	0	0	10	0	1	14
2008	6	3	0	0	0	0	0	0	9	0	0	12
2008	7	1	0	1	0	1	0	0	5	0	0	8
2008	8											0
2008	9											0
2008	10											0
2008	11											0
2008	12											0
<b>Total</b>		<b>22</b>	<b>0</b>	<b>8</b>	<b>1</b>	<b>9</b>	<b>5</b>	<b>2</b>	<b>62</b>	<b>0</b>	<b>8</b>	<b>117</b>

Unique Herd Breakdowns	DVO_CODE											
Year	Armagh	Ballymena	Coleraine	Dungannon	Enniskillen	Larne	L'Derry	Newry	Nt'Ards	Omagh	Total Herds	
2008	23	0	9	2	9	6	3	67	0	8	127	

**Brucellosis: number of reactor herds by month and by DVO in 2007 and unique herd breakdowns during the year**

2007	DVO_CODE											
Year	Month	Armagh	Ballymena	Coleraine	Dungannon	Enniskillen	Larne	L'Derry	Newry	Nt'Ards	Omagh	Total
2007	1	2	0	0	0	2	0	0	1	1	0	6
2007	2	2	0	0	0	0	0	0	2	1	0	5
2007	3	1	0	0	0	0	0	0	1	0	0	2
2007	4	4	0	0	3	3	3	0	3	0	0	16
2007	5	6	0	2	0	0	0	0	3	1	0	12
2007	6	3	0	0	0	1	0	1	0	0	0	5
2007	7	2	0	1	2	2	0	0	5	0	1	13
2007	8	5	0	0	1	0	0	0	6	0	1	13
2007	9	5	0	0	0	1	0	0	1	0	0	7
2007	10	5	1	2	1	3	2	0	6	1	1	22
2007	11	4	2	2	2	3	2	1	8	1	1	26
2007	12	7	1	2	2	3	1	0	5	1	2	24
<b>Total</b>		<b>46</b>	<b>4</b>	<b>9</b>	<b>11</b>	<b>18</b>	<b>8</b>	<b>2</b>	<b>41</b>	<b>6</b>	<b>6</b>	<b>151</b>

Unique Herd Breakdowns	DVO_CODE											
Year	Armagh	Ballymena	Coleraine	Dungannon	Enniskillen	Larne	L'Derry	Newry	Nt'Ards	Omagh	Total Herds	
2007	47	4	9	11	20	9	2	42	6	7	157	

**Brucellosis: number of reactor herds by month and by DVO in 2006 and unique herd breakdowns during the year**

2006	DVO_CODE											
Year	Month	Armagh	Ballymena	Coleraine	Dungannon	Enniskillen	Larne	L'Derry	Newry	Nt'Ards	Omagh	Total
2006	1	7	0	0	0	1	0	0	3	0	0	11
2006	2	2	0	1	0	1	0	0	4	1	0	9
2006	3	6	0	0	0	2	0	0	4	0	0	12
2006	4	4	0	1	0	1	0	0	0	1	0	7
2006	5	1	0	0	0	3	0	0	3	1	0	8
2006	6	3	0	0	0	1	0	0	1	1	1	7
2006	7	6	0	1	0	2	0	0	3	1	1	14
2006	8	6	0	0	0	2	0	0	2	1	0	11
2006	9	1	0	0	1	4	0	0	2	0	0	8
2006	10	3	0	1	2	0	0	0	2	1	2	11
2006	11	3	1	3	0	1	2	0	1	1	1	13
2006	12	2	0	1	0	1	2	0	1	0	0	7
<b>Total</b>		<b>44</b>	<b>1</b>	<b>8</b>	<b>3</b>	<b>19</b>	<b>4</b>	<b>0</b>	<b>26</b>	<b>8</b>	<b>5</b>	<b>118</b>

Unique Herd Breakdowns	DVO_CODE											
Year	Armagh	Ballymena	Coleraine	Dungannon	Enniskillen	Larne	L'Derry	Newry	Nt'Ards	Omagh	Total Herds	
2006	44	1	8	3	20	4	0	26	8	6	120	

**A herd is defined as being a Br reactor herd if it had at least one Br reactor animal in that month and no Br reactor animals during the previous 12 months.**

**A Br unique herd breakdown is defined as a herd which has had at least one BR reactor during the specified calendar year irrespective of any Br reactors during the previous calendar year.**

**Brucellosis: number of reactor animals by month and by DVO 2008**

2008	DVO_CODE											
Year	Month	Armagh	Ballymena	Coleraine	Dungannon	Enniskillen	Larne	L'Derry	Newry	Nt'Ards	Omagh	Total
2008	1	5	0	3	18	1	1	0	30	0	1	59
2008	2	9	0	1	0	2	5	1	17	0	3	38
2008	3	18	0	2	0	6	0	2	16	0	3	47
2008	4	9	0	2	1	18	1	0	9	0	11	51
2008	5	8	0	1	0	0	0	0	13	0	1	23
2008	6	4	0	0	0	1	0	0	52	0	0	57
2008	7	2	0	1	0	1	0	0	14	0	0	18
2008	8											
2008	9											
2008	10											
2008	11											
2008	12											
<b>Total</b>		55	0	10	19	29	7	3	151	0	19	293

**Brucellosis: number of reactor animals by month and by DVO 2007**

2007	DVO_CODE											
Year	Month	Armagh	Ballymena	Coleraine	Dungannon	Enniskillen	Larne	L'Derry	Newry	Nt'Ards	Omagh	Total
2007	1	2	0	0	0	34	3	0	2	1	0	42
2007	2	2	0	0	0	0	0	0	4	1	0	7
2007	3	1	0	0	0	0	0	0	2	0	1	4
2007	4	4	0	0	3	20	4	0	13	0	0	44
2007	5	38	0	30	0	19	0	0	22	1	0	110
2007	6	5	0	0	0	1	0	1	0	0	0	7
2007	7	3	0	1	2	2	0	0	8	0	1	17
2007	8	13	0	0	3	0	0	0	8	0	1	25
2007	9	12	0	0	0	1	0	0	1	0	0	14
2007	10	7	1	8	1	6	3	0	18	1	1	46
2007	11	4	2	4	2	7	4	2	11	1	1	38
2007	12	8	1	6	8	7	1	0	12	2	3	48
<b>Total</b>		99	4	49	19	97	15	3	101	7	8	402

**Brucellosis: number of reactor animals by month and by DVO 2006**

2006	DVO_CODE											
Year	Month	Armagh	Ballymena	Coleraine	Dungannon	Enniskillen	Larne	L'Derry	Newry	Nt'Ards	Omagh	Total
2006	1	22	0	0	0	7	0	0	3	0	0	32
2006	2	9	0	1	0	1	0	0	20	1	0	32
2006	3	9	0	0	0	2	0	0	7	0	0	18
2006	4	23	0	1	0	3	0	0	2	1	0	30
2006	5	1	0	0	0	3	0	0	17	1	1	23
2006	6	14	0	0	0	1	0	0	5	1	1	22
2006	7	27	0	1	0	2	0	0	5	1	1	37
2006	8	11	0	0	0	2	0	0	19	1	0	33
2006	9	1	0	0	15	5	0	0	2	0	0	23
2006	10	5	0	1	10	1	0	0	2	1	2	22
2006	11	3	1	3	0	6	2	0	1	2	1	19
2006	12	2	0	1	0	17	2	0	1	0	0	23
<b>Total</b>		127	1	8	25	50	4	0	84	9	6	314

A Br reactor animal is defined as an animal where the manual interpretation field for a serological test is positive ('P') with the first test date being taken as the time at which the animal became a reactor.

**Month = July 2008**

Ref.		<b>Total</b>	<b>Armagh</b>	<b>Ballymena</b>	<b>Coleraine</b>	<b>Dungannon</b>	<b>Enniskillen</b>	<b>Larne</b>	<b>L'derry</b>	<b>Newry</b>	<b>Nt'ards</b>	<b>Omagh</b>
b16	<b>No. herds with any test completed in month</b>	<b>5582</b>	<b>577</b>	<b>375</b>	<b>642</b>	<b>662</b>	<b>733</b>	<b>432</b>	<b>166</b>	<b>797</b>	<b>422</b>	<b>776</b>
b17	No. herds with any test, from start of year	18963	1730	1189	2118	2215	2711	1401	681	2874	1349	2695
b35	All herds with any test, from start of year	20970	2114	1266	2323	2424	2840	1513	761	3333	1540	2856
b18	No. herds with any test, from start of year (no cattle)	2007	384	77	205	209	129	112	80	459	191	161
b19	<b>No. herds with herd test completed in month</b>	<b>1180</b>	<b>214</b>	<b>30</b>	<b>105</b>	<b>123</b>	<b>141</b>	<b>30</b>	<b>29</b>	<b>307</b>	<b>83</b>	<b>118</b>
b20	No. herds with herd test, from start of year	12982	1449	614	1343	1389	1910	857	447	2297	914	1762
b50	All herds with herd test, from start of year	15131	1845	707	1572	1621	2047	981	534	2776	1116	1932
b21	No. herds with herd test, from start of year (no cattle)	2149	396	93	229	232	137	124	87	479	202	170
b22	No. herds with herd test during last 12 months	20664	1879	1207	2214	2376	3015	1479	800	3194	1552	2948
b39	No. herds with herd test during last 13-24 months	21086	1902	1247	2244	2458	3054	1524	834	3209	1606	3008
b23	No. herds with herd test during 2007	20232	1822	1186	2198	2342	2933	1444	749	3181	1541	2836
b24	No. herds with herd test during 2006	20658	1899	1216	2189	2456	2969	1459	807	3241	1553	2869
b48	No. herds with herd test during 2005	20852	1862	1240	2178	2444	3047	1514	795	3256	1574	2942
b51	No. herds with herd test during 2004	20152	1968	1163	2051	2269	3127	1435	720	3328	1433	2658
b33	No. herds with herd test during 2003	17477	2001	965	1558	1677	3016	1289	508	3286	1196	1981
b25	<b>No. herds with any risk test completed</b>	<b>7847</b>	<b>1149</b>	<b>408</b>	<b>862</b>	<b>748</b>	<b>1192</b>	<b>570</b>	<b>216</b>	<b>1432</b>	<b>451</b>	<b>819</b>
b26	<b>No. herds with herd risk test completed</b>	<b>3820</b>	<b>875</b>	<b>112</b>	<b>353</b>	<b>223</b>	<b>679</b>	<b>218</b>	<b>56</b>	<b>1000</b>	<b>101</b>	<b>203</b>
b27	<b>No. herds with restricted herd test completed</b>	<b>226</b>	<b>56</b>	<b>5</b>	<b>14</b>	<b>9</b>	<b>21</b>	<b>18</b>	<b>3</b>	<b>83</b>	<b>3</b>	<b>14</b>

b28	<b>Number of dairy herds</b>	<b>3600</b>	<b>301</b>	<b>303</b>	<b>549</b>	<b>423</b>	<b>392</b>	<b>321</b>	<b>76</b>	<b>446</b>	<b>307</b>	<b>482</b>
b37	No. dairy herds only tested by bulk milk ELISA since start of year	1537	51	192	293	223	115	170	40	123	127	203
b29	No. dairy herds only tested by bulk milk ELISA	492	0	105	160	97	3	69	14	10	14	20
b40	No. dairy herds only tested by bulk milk ELISA during last 13-24 months	534	2	119	180	97	6	64	18	10	9	29
b38	Total no. herds tested for Br since start of year	14519	1500	806	1636	1612	2025	1027	487	2420	1041	1965
b30	Total no. herds tested for Br during last 12 months	21156	1879	1312	2374	2473	3018	1548	814	3204	1566	2968
b41	Total no. herds tested for Br during last 13-24 months	21620	1904	1366	2424	2555	3060	1588	852	3219	1615	3037
b31	Total no. herds tested for Br during 2007	20869	1841	1306	2382	2447	2954	1511	770	3202	1570	2886
b32	Total no. herds tested for Br during 2006	21259	1914	1335	2360	2535	2989	1542	827	3258	1576	2923
b49	Total no. herds tested for Br during 2005	21567	1880	1351	2392	2571	3065	1577	820	3279	1622	3010
b43	Total no. herds tested for Br during 2004	20990	1977	1297	2246	2410	3139	1532	755	3343	1530	2761
b34	Total no. herds tested for Br during 2003	18441	2014	1045	1796	1864	3045	1370	545	3310	1304	2148

		<b>Month = July 2008</b>										
Ref		<b>Total</b>	<b>Armagh</b>	<b>Ballymena</b>	<b>Coleraine</b>	<b>Dungannon</b>	<b>Enniskillen</b>	<b>Larne</b>	<b>L'derry</b>	<b>Newry</b>	<b>Nt'ards</b>	<b>Omagh</b>
c1	<b>Total number of tests in current month</b>	<b>7711</b>	<b>843</b>	<b>529</b>	<b>860</b>	<b>955</b>	<b>1048</b>	<b>606</b>	<b>226</b>	<b>1032</b>	<b>595</b>	<b>1017</b>
c2	Total number of tests from start of year	60257	5928	4244	6940	7009	8893	5008	2046	7970	4034	8185
c3	No. tests during the same time period in the previous year	54083	5645	3892	6285	6117	7863	4736	1566	6747	4067	7165
c4	% change between years	10.2	4.8	8.3	9.4	12.7	11.6	5.4	23.5	15.3	-0.8	12.5
c5	No. tests in the previous 12 months	98311	9787	7283	11336	11315	14239	8398	3281	12731	6517	13424
c6	<b>No. animal tests in current month</b>	<b>66241</b>	<b>10346</b>	<b>3282</b>	<b>6295</b>	<b>7835</b>	<b>8365</b>	<b>3053</b>	<b>1618</b>	<b>13631</b>	<b>5074</b>	<b>6742</b>
c7	No. of animal tests from start of year	781127	102656	41734	83006	71019	101618	63468	26653	125702	65697	99574
c8	No. animal tests during the same time period in the previous year	707128	94377	38034	78986	66985	93096	57704	20052	101021	70156	86717
c9	% change between years	9.5	8.1	8.9	4.8	5.7	8.4	9.1	24.8	19.6	-6.8	12.9
c10	No. animal tests in previous 12 months	1333613	172054	79542	143623	124587	171378	109686	46001	201488	112683	172571
c11	No. cattle eligible for Br testing	907775	75603	63042	123307	100933	101177	76410	36476	111177	93467	126183
c12	No. cattle herds eligible for Br testing	24073	2186	1453	2707	2921	3266	1717	981	3634	1822	3386
c13	<b>No. restricted herd tests during month</b>	<b>45</b>	<b>9</b>	<b>0</b>	<b>3</b>	<b>1</b>	<b>9</b>	<b>2</b>	<b>0</b>	<b>18</b>	<b>1</b>	<b>2</b>
c14	No. animals tested	3038	626	0	395	302	643	51	0	909	22	90
c15	<b>No. herd tests during month</b>	<b>1184</b>	<b>215</b>	<b>30</b>	<b>106</b>	<b>123</b>	<b>142</b>	<b>31</b>	<b>29</b>	<b>307</b>	<b>83</b>	<b>118</b>
c16	No. animals tested	48126	8782	1824	4366	5539	5954	1403	1012	11670	3732	3844
c17	<b>No. individual tests during month</b>	<b>6527</b>	<b>628</b>	<b>499</b>	<b>754</b>	<b>832</b>	<b>906</b>	<b>575</b>	<b>197</b>	<b>725</b>	<b>512</b>	<b>899</b>
c18	No. animals tested	18115	1564	1458	1929	2296	2411	1650	606	1961	1342	2898
c19	<b>No. CTA tests during month</b>	<b>71</b>	<b>13</b>	<b>3</b>	<b>15</b>	<b>1</b>	<b>8</b>	<b>6</b>	<b>0</b>	<b>10</b>	<b>9</b>	<b>6</b>
c20	No. animals with CTA test	75	13	3	16	1	8	6	0	11	10	7
c21	<b>No. CTT tests during month</b>	<b>224</b>	<b>49</b>	<b>16</b>	<b>27</b>	<b>23</b>	<b>16</b>	<b>12</b>	<b>10</b>	<b>30</b>	<b>15</b>	<b>26</b>
c22	No. animals with CTT test	332	56	17	42	27	19	43	13	45	24	46
c36	No. animals Br tested since start of year	614169	71208	35645	70893	59237	76705	52426	21717	93289	60084	85511
c23	<b>No. animals Br tested in previous 12 months</b>	<b>931015</b>	<b>94495</b>	<b>62636</b>	<b>113676</b>	<b>96637</b>	<b>114839</b>	<b>85036</b>	<b>36567</b>	<b>128351</b>	<b>98161</b>	<b>134894</b>
c39	No. animals Br tested in previous 13-24 months	945232	95182	62455	116270	102540	115042	87614	36306	127233	104158	135248
c25	No. animals Br tested in 2007	911394	90027	61673	113643	97367	111311	84280	33430	124695	97294	130288

c26	No. animals Br tested in 2006	928500	92643	60862	112747	104149	114386	83121	36609	126674	101775	128566
c61	No. animals Br tested in 2005	911790	83476	60686	108024	100843	116686	85152	35739	121948	95202	129923
c43	No. animals Br tested in 2004	860653	87159	53453	97093	95858	112411	76668	30836	119660	85925	111964
c24	No. animals Br tested in 2003	749981	86650	50657	82874	69128	104554	69845	23369	118038	69743	82225
c37	No. animals BME tested since start of year	133496	5445	15752	27979	16801	6741	14890	4418	8734	16446	16290
c27	<b>No. animals BME tested in previous 12 months</b>	<b>48004</b>	<b>0</b>	<b>9870</b>	<b>15647</b>	<b>8641</b>	<b>163</b>	<b>7126</b>	<b>1925</b>	<b>707</b>	<b>2038</b>	<b>1887</b>
c40	No. animals BME tested in previous 13-24 months	49960	227	9636	16642	8389	1107	6046	3016	825	921	3151
c29	No. animals BME tested in 2007	62135	2096	10732	18669	9194	919	6877	2781	2318	3564	4985
c30	No. animals BME tested in 2006	56682	1169	10405	16977	6539	910	8147	3343	1368	2202	5622
c62	No. animals BME tested in 2005	61779	1434	8633	19522	10361	1174	5415	2838	2090	5510	4802
c44	No. animals BME tested in 2004	69547	1058	10009	16930	9544	1231	8802	4072	954	9622	7325
c28	No. animals BME tested in 2003	66314	775	5196	17726	9967	1027	5459	2883	1443	11431	10407
c31	Total animals currently monitored by BME	299561	27986	25166	48450	28891	20550	28005	8189	36602	36728	38994
c38	Current total animals under Br surveillance since start of year	747665	76653	51397	98872	76038	83446	67316	26135	102023	76530	101801
c32	<b>Current total animals under Br surveillance</b>	<b>979019</b>	<b>94495</b>	<b>72506</b>	<b>129323</b>	<b>105278</b>	<b>115002</b>	<b>92162</b>	<b>38492</b>	<b>129058</b>	<b>100199</b>	<b>136781</b>
c41	Total animals under Br surveillance in last 13-24 months	995192	95409	72091	132912	110929	116149	93660	39322	128058	105079	138399
c34	Total animals under Br surveillance in 2007	973529	92123	72405	132312	106561	112230	91268	39952	128042	103977	134188
c35	Total animals under Br surveillance in 2006	985182	93812	71267	129724	110688	115296	91268	86464	37977	128876	134188
c63	Total animals under Br surveillance in 2005	973569	84910	69319	127546	111204	117860	90567	38577	124038	100712	134725
c42	Total animals under Br surveillance in 2004	930200	88217	63462	114023	105402	113642	85470	34908	120614	95547	119289
c33	Total animals under Br surveillance in 2003	816295	87425	55853	100600	79095	105581	75304	26252	119481	81174	92632

**Month = July 2008**

Ref		<b>Total</b>	<b>Armagh</b>	<b>Ballymena</b>	<b>Coleraine</b>	<b>Dungannon</b>	<b>Enniskillen</b>	<b>Larne</b>	<b>L'derry</b>	<b>Newry</b>	<b>Nt'ards</b>	<b>Omagh</b>
<b>c76</b>	<b>No. premovement tests off-farm in 2008</b>	<b>27799</b>	<b>1634</b>	<b>2455</b>	<b>3492</b>	<b>3577</b>	<b>4036</b>	<b>2558</b>	<b>887</b>	<b>2768</b>	<b>1898</b>	<b>4494</b>
c70	No. premovement tests off-farm in 2007	44457	2468	4236	5574	5456	5959	4558	1395	4663	3020	7128
c64	No. premovement tests off-farm in 2006	43112	2518	4009	5493	5539	5646	4357	1285	4483	3143	6639
c45	No. premovement tests off-farm in 2005	28594	2012	2624	3584	3807	3661	2595	908	3097	1957	4349
c46	No. premovement tests off-farm in 2004	746	44	115	111	83	53	98	17	84	72	69
<b>c77</b>	<b>No. post-movement tests in 2008</b>	<b>682</b>	<b>58</b>	<b>54</b>	<b>58</b>	<b>119</b>	<b>51</b>	<b>44</b>	<b>32</b>	<b>141</b>	<b>44</b>	<b>81</b>
c71	No. post-movement tests in 2007	1136	132	83	133	134	101	82	42	186	84	159
c65	No. post-movement tests in 2006	1185	133	111	136	141	89	86	37	210	73	169
c47	No. post-movement tests in 2005	1569	185	159	170	170	125	118	47	240	145	210
c48	No. post-movement tests in 2004	37	4	5	10	4	4	1	2	2	1	4
<b>c78</b>	<b>No. premovement animal tests off-farm in 2008</b>	<b>99109</b>	<b>5957</b>	<b>8460</b>	<b>12511</b>	<b>12039</b>	<b>13784</b>	<b>9113</b>	<b>3720</b>	<b>9738</b>	<b>7450</b>	<b>16337</b>
c72	No. premovement animal tests off-farm in 2007	170535	10191	15272	21030	20115	21117	17403	6246	17856	12577	28728
c66	No. premovement animal tests off-farm in 2006	168585	10638	14446	21309	21166	19996	17200	6333	16617	13707	27173
c49	No. premovement animal tests off-farm in 2005	121055	8707	9725	15180	15649	14090	10814	5112	12947	9485	19346
c50	No. premovement animal tests off-farm in 2004	2832	129	350	393	353	202	270	95	448	355	237
<b>c79</b>	<b>No. post-movement animal tests in 2008</b>	<b>1191</b>	<b>105</b>	<b>95</b>	<b>85</b>	<b>200</b>	<b>118</b>	<b>60</b>	<b>50</b>	<b>253</b>	<b>68</b>	<b>157</b>
c73	No. post-movement animal tests in 2007	2150	269	139	297	221	146	138	106	350	150	334
c67	No. post-movement animal tests in 2006	2181	205	231	278	270	160	129	79	383	124	322
c51	No. post-movement animal tests in 2005	3643	396	388	457	381	205	195	98	606	413	504
c52	No. post-movement animal tests in 2004	133	4	15	50	37	10	2	4	2	2	7
<b>c80</b>	<b>No. reactors detected by movement tests 2008</b>	<b>14</b>	<b>1</b>	<b>0</b>	<b>2</b>	<b>0</b>	<b>1</b>	<b>0</b>	<b>0</b>	<b>6</b>	<b>0</b>	<b>4</b>
c74	No. reactors detected by movement tests 2007	11	1	2	0	2	3	0	0	1	0	2
c68	No. reactors detected by movement tests 2006	8	0	0	2	0	2	0	0	1	2	1
c53	No. reactors detected by movement tests 2005	6	1	0	0	1	2	0	0	0	0	2
c54	No. reactors detected by movement tests 2004	1	0	0	1	0	0	0	0	0	0	0
<b>c81</b>	<b>No. inconclusives detected by movement tests 2008</b>	<b>985</b>	<b>75</b>	<b>88</b>	<b>107</b>	<b>112</b>	<b>136</b>	<b>81</b>	<b>48</b>	<b>92</b>	<b>86</b>	<b>160</b>
c75	No. inconclusives detected by movement tests 2007	1617	183	170	190	191	202	158	55	148	87	233
c69	No. inconclusives detected by movement tests 2006	1323	145	95	130	224	170	122	51	97	89	200
c55	No. inconclusives detected by movement tests 2005	495	68	24	53	76	43	26	31	58	50	66
c56	No. inconclusives detected by movement tests 2004	10	0	1	1	3	0	2	0	0	1	2
<b>c57</b>	<b>Total pre-movement and post-movement tests</b>	<b>149317</b>	<b>9188</b>	<b>13851</b>	<b>18761</b>	<b>19030</b>	<b>19725</b>	<b>14497</b>	<b>4652</b>	<b>15874</b>	<b>10437</b>	<b>23302</b>
c58	Total pre-movement and post-movement animal tests	571414	36601	49121	71590	70431	69828	55324	21843	59200	44331	93145
c59	Total BR reactors detected by movement tests	40	3	2	5	3	8	0	0	8	2	9
c60	Total BR inconclusives detected by movement tests	4430	471	378	481	606	551	389	185	395	313	661

### Explanatory Comments for Brucellosis Statistics - B. Testing Herds

<b>B16</b>	<b>No. herds with any test completed in month</b>	<b>Blood Test of any disease status and size (herd or animal-level). Tests with no animals are excluded.</b>
<b>B17</b>	No. herds with any test, from start of year	Blood Test of any disease status and size (herd or animal-level) carried out on a herd since 1st January. Tests with no animals are excluded.
<b>B35</b>	All herds with any test, from start of year	Blood test of any disease status and size (herd or animal-level) carried out on a herd since 1st January. Tests with no animals are included.
<b>B18</b>	No. herds with any test, from start of year (no cattle)	Herd or individual blood test of any disease status (routine, risk or restricted) where no cattle were recorded at all such tests since 1st January
<b>B19</b>	<b>No. herds with herd test completed in month</b>	<b>Herd level blood test of any disease status (routine, risk or restricted) completed during the above month. Tests with no animals are excluded.</b>
<b>B20</b>	No. herds with herd test, from start of year	Herd level blood test of any disease status (routine, risk or restricted) completed since 1st January. Tests with no animals are excluded.
<b>B50</b>	All herds with herd test, from start of year	Herd level blood test of any disease status (routine, risk or restricted) completed since 1st January. Tests with no animals are included.
<b>B21</b>	No. herds with herd test, from start of year (no cattle)	Herd level blood test of any disease status (routine, risk or restricted) where no cattle were recorded at all such herd tests since 1st January.
<b>B22</b>	No. herds with herd test during last 12 months	Herd level blood test of any disease status (routine, risk or restricted) completed in the 12 month period from the above month. Tests with no animals are excluded.
<b>B39</b>	No. herds with herd test during last 13-24 months	Herd level blood test of any disease status (routine, risk or restricted) completed in the 13-24 month period from the above month. Tests with no animals are excluded.
<b>B23</b>	No. herds with herd test during 2007	Herd level blood test of any disease status (routine, risk or restricted) completed in the calendar year 2007. Tests with no animals are excluded.
<b>B24</b>	No. herds with herd test during 2006	Herd level blood test of any disease status (routine, risk or restricted) completed in the calendar year 2006. Tests with no animals are excluded.
<b>B48</b>	No. herds with herd test during 2005	Herd level blood test of any disease status (routine, risk or restricted) completed in the calendar year 2005. Tests with no animals are excluded.
<b>B51</b>	No. herds with herd test during 2004	Herd level blood test of any disease status (routine, risk or restricted) completed in the calendar year 2004. Tests with no animals are excluded.
<b>B33</b>	No. herds with herd test during 2003	Herd level blood test of any disease status (routine, risk or restricted) completed in the calendar year 2003. Tests with no animals are excluded.
<b>B25</b>	No. herds with any risk test completed	Herd has had a herd or individual level risk blood test since start of calendar year and number tested > 0
<b>B26</b>	No. herds with herd risk test completed	Herd has had a herd level risk blood test since start of calendar year and number tested > 0.
<b>B27</b>	No. herds with restricted herd test completed	Herd has had a restricted herd test (RHT) since start of calendar year and number tested > 0.

<b>B28</b>	Number of dairy herds	Number of herds with a Dairy Supplier Number and/or Milk Licence Number recorded on APHIS and currently have dairy cows in the herd.
<b>B37</b>	No. dairy herds only tested by bulk milk ELISA since start of year	No. dairy herds where no herd blood test was recorded since the start of the calendar year i.e. tested only by bulk milk ELISA (BME).
<b>B29</b>	No. dairy herds only tested by bulk milk ELISA	No. dairy herds where no herd blood test was recorded during the last 12 month period i.e. tested only by bulk milk ELISA (BME).
<b>B40</b>	No. dairy herds only tested by bulk milk ELISA during last 13-24 months	No. dairy herds where no herd blood test was recorded during the last 13-24 month period i.e. tested only by bulk milk ELISA (BME).
<b>B38</b>	Total no. herds tested for Br since start of year	No. herds tested by serology or bulk milk ELISA completed since the start of the calendar year. Tests with no animals are excluded. Currently it is assumed that all dairy herds are subjected to BME testing.
<b>B30</b>	Total no. herds tested for Br during last 12 months	No. herds tested by serology or bulk milk ELISA completed in the 12 month period from the above month. Tests with no animals are excluded. Currently it is assumed that all dairy herds are subjected to BME testing.
<b>B41</b>	Total no. herds tested for Br during last 13-24 months	No. herds tested by serology or bulk milk ELISA completed in the 13-24 month period from the above month. Tests with no animals are excluded. Currently it is assumed that all dairy herds are subjected to BME testing.
<b>B31</b>	Total no. herds tested for Br during 2007	No. herds tested by serology or bulk milk ELISA completed during 2007. Tests with no animals are excluded. Currently it is assumed that all dairy herds are subjected to BME testing.
<b>B32</b>	Total no. herds tested for Br during 2006	No. herds tested by serology or bulk milk ELISA completed during 2006. Tests with no animals are excluded. Currently it is assumed that all dairy herds are subjected to BME testing.
<b>B49</b>	Total no. herds tested for Br during 2005	No. herds tested by serology or bulk milk ELISA completed during 2005. Tests with no animals are excluded. Currently it is assumed that all dairy herds are subjected to BME testing. 2005 figures also assume that the number of dairy farms are the same as were present on APHIS in February 2004.
<b>B43</b>	Total no. herds tested for Br during 2004	No. herds tested by serology or bulk milk ELISA completed during 2004. Tests with no animals are excluded. Currently it is assumed that all dairy herds are subjected to BME testing. 2004 figures also assume that the number of dairy farms are the same as were present on APHIS in February 2003.
<b>B34</b>	Total no. herds tested for Br during 2003	No. herds tested by serology or bulk milk ELISA completed during 2003. Tests with no animals are excluded. Currently it is assumed that all dairy herds are subjected to BME testing. 2003 figures also assume that the number of dairy farms are the same as were present on APHIS in February 2002.

**Explanatory Comments for Brucellosis Statistics - C. Testing Animals**

<b>C1</b>	<b>Total number of tests in current month</b>	<b>Number of herds and individual blood tests performed in the month stated above. Tests with no animals are excluded</b>
<b>C2</b>	Total number of tests from start of year	From 1st January. Only includes blood sample tests. Tests with no animals are excluded.
<b>C3</b>	No. tests during the same time period in the previous year	From 1st January of previous year. Only includes blood sample tests. Tests with no animals are excluded.
<b>C4</b>	% change between years	Difference between the number of blood tests carried out during the current year and the number carried out in the previous expressed as a percentage.
<b>C5</b>	No. tests in the previous 12 months	Last 12 month period from the above month. Only includes blood sample tests. Tests with no animals are excluded.
<b>C6</b>	<b>No. animal tests in current month</b>	<b>Animal test = a count of the number of animals blood tested within each herd or individual test. Some animals may have been blood tested multiple times during the year.</b>
<b>C7</b>	No. animal tests from start of year	Number of animal tests carried out since 1st January. Only includes Blood Sample Tests
<b>C8</b>	No. animal tests during the same time period in the previous year	Number of animal blood tests carried out from 1st January in the previous year over the same time interval as recorded for the current year.
<b>C9</b>	% change between years	Difference between the number of animal blood tests during the current year and the number carried out in the previous expressed as a percentage.
<b>C10</b>	No. animal tests in previous 12 months	Last 12 month period from the above month.Only includes blood sample tests.
<b>C11</b>	No. cattle eligible for BR testing	Based on the average number of animals presented at Br herd blood tests over last 4 years. Herds which have only been tested by BME are excluded.
<b>C12</b>	No. cattle herds eligible for BR testing	Based on cattle being presented for a BR herd blood tests over last 4 years. Herds with '0' cattle are excluded.Herds which have only been tested by BME are also excluded.
<b>C13</b>	<b>No. restricted herd tests during month</b>	<b>All restricted herd tests (RHT, STC, VTC) sampled during the above month.</b>
<b>C14</b>	No. animals tested	Total of the animals reported as being tested within restricted herd tests (RHT, STC, VTC ) during the above month.
<b>C15</b>	<b>No. herd tests during month</b>	<b>Total of number of herd blood tests sampled during the above month.</b>
<b>C16</b>	No. animals tested	Total of the animals reported as being blood tested within all herd tests during the above month.
<b>C17</b>	<b>No. individual tests during month</b>	<b>Total number individual tests sampled during the above month.</b>
<b>C18</b>	No. animals tested	Total of the animals reported as being blood tested within all individual tests during the above month.
<b>c19</b>	<b>No. CTA tests during month</b>	<b>Total number of check test abortions (CTAs) tests sampled during the above month.</b>
<b>c20</b>	No. animals with CTA test	Total of the animals reported as being tested within all CTA tests during the above month.
<b>c21</b>	<b>No. CTT tests during month</b>	<b>Total number of check test tracing (CTTs) tests sampled during the above month.</b>
<b>c22</b>	No. animals with CTT test	Total of the animals reported as being tested within all CTT tests during the above month.
<b>c36</b>	No. animals Br tested since start of year	Animals identified as having had at least one Br blood test since the start of the calendar year. Due to the same animals being sampled in different DVO areas, the 'Total' is not the sum of the DVO figures.
<b>c23</b>	<b>No. animals BR tested in previous 12 months</b>	<b>Animals identified as having had at least one BR blood test during the last 12 month period from the above month. Due to the same animals being sampled in different DVO areas, the 'Total' is not the sum of the DVO figures.</b>
<b>c39</b>	No. animals BR tested in previous 13-24 months	Animals identified as having had at least one BR blood test during the last 13-24 month period from the above month. Due to the same animals being sampled in different DVO areas, the 'Total' is not the sum of the DVO figures.
<b>c25</b>	No. animals BR tested in 2007	Animals identified as having had at least one Br blood test during the 2007 calendar year. Due to the same animals being sampled in different DVO areas, the 'Total' is not the sum of the DVO figures.
<b>c26</b>	No. animals BR tested in 2006	Animals identified as having had at least one Br blood test during the 2006 calendar year. Due to the same animals being sampled in different DVO areas, the 'Total' is not the sum of the DVO figures.
<b>c61</b>	No. animals BR tested in 2005	Animals identified as having had at least one Br blood test during the 2005 calendar year. Due to the same animals being sampled in different DVO areas, the 'Total' is not the sum of the DVO figures.
<b>c43</b>	No. animals BR tested in 2004	Animals identified as having had at least one Br blood test during the 2004 calendar year. Due to the same animals being sampled in different DVO areas, the 'Total' is not the sum of the DVO figures.
<b>c24</b>	No. animals BR tested in 2003	Animals identified as having had at least one Br blood test during the 2003 calendar year. Due to the same animals being sampled in different DVO areas, the 'Total' is not the sum of the DVO figures.
<b>c37</b>	No. animals BME tested since start of year	Estimated number of animals tested within dairy herds which were subjected to only bulk milk ELISA (BME) surveillance for BR i.e. not blood sampled since the start of year. Animal count based on >2yr old female cattle of a dairy breed within each dairy herd.

<b>c27</b>	<b>No. animals BME tested in previous 12 months</b>	<b>Estimated number of animals tested within dairy herds which were subjected to only bulk milk ELISA (BME) surveillance for BR i.e. not blood sampled during the last 12 months. Animal count based on &gt;2yr old female cattle of a dairy breed.</b>
<b>c40</b>	No. animals BME tested in previous 13-24 months	Estimated number of animals tested within dairy herds which were subjected to only bulk milk ELISA (BME) surveillance for BR i.e. not blood sampled during the last 13-24 months. Animal count based on >2yr old female cattle of a dairy breed.
<b>c29</b>	No. animals BME tested in 2007	Estimated number of animals tested within dairy herds which were subjected only to bulk milk ELISA (BME) surveillance for BR i.e. not blood sampled during 2007. Animal count based on >2yr old female cattle of a dairy breed
<b>c30</b>	No. animals BME tested in 2006	Estimated number of animals tested within dairy herds which were only subjected to bulk milk ELISA (BME) surveillance for BR i.e. not blood sampled during 2006. Animal count based on >2yr old female cattle of a dairy breed within each dairy herd
<b>C62</b>	No. animals BME tested in 2005	Estimated number of animals tested within dairy herds which were subjected only to bulk milk ELISA (BME) surveillance for BR i.e. not blood sampled during 2005. Animal count based on >2yr old female cattle of a dairy breed within each dairy herd.
<b>C44</b>	No. animals BME tested in 2004	Estimated number of animals tested within dairy herds which were subjected only to bulk milk ELISA (BME) surveillance for BR i.e. not blood sampled during 2004. Animal count based on >2yr old female cattle of a dairy breed within each dairy herd as of 12th February 2004.
<b>c28</b>	No. animals BME tested in 2003	Estimated number of animals tested within dairy herds which were subjected only to bulk milk ELISA (BME) surveillance for BR i.e. not blood sampled during 2003. Animal count based on >2yr old female cattle of a dairy breed within each dairy herd
<b>c31</b>	Total animals currently monitored by BME	Estimated number of animals tested within dairy herds which were subjected to bulk milk ELISA (BME) surveillance for BR. Animal count based on >2yr old female cattle of a dairy breed.
<b>c38</b>	Current total animals under Br surveillance since start of year	Total number of animals in herds tested by serology or bulk milk ELISA completed since the start of the calendar year. Tests with no animals are excluded. Currently it is assumed that all dairy herds are subjected to BME testing.
<b>c32</b>	Current total animals under Br surveillance	Total number of animals in herds tested by serology or bulk milk ELISA completed in the 12 month period from the above month. Tests with no animals are excluded. Currently it is assumed that all dairy herds are subjected to BME testing.
<b>c41</b>	Total animals under Br surveillance in last 13-24 months	Total number of animals in herds tested by serology or bulk milk ELISA completed in the 13-24 month period from the above month. Tests with no animals are excluded. Currently it is assumed that all dairy herds are subjected to BME testing.
<b>c34</b>	Total animals under Br surveillance in 2007	Total number of animals in herds tested by serology or bulk milk ELISA completed during 2007. Currently it is assumed that all dairy herds are subjected to BME testing.
<b>c35</b>	Total animals under Br surveillance in 2006	Total number of animals in herds tested by serology or bulk milk ELISA completed during 2006. Currently it is assumed that all dairy herds are subjected to BME testing.
<b>C63</b>	Total animals under Br surveillance in 2005	Total number of animals in herds tested by serology or bulk milk ELISA completed during 2005. Currently it is assumed that all dairy herds are subjected to BME testing
<b>C42</b>	Total animals under Br surveillance in 2004	Total number of animals in herds tested by serology or bulk milk ELISA completed during 2004. Currently it is assumed that all dairy herds are subjected to BME testing.
<b>C33</b>	Total animals under Br surveillance in 2003	Total number of animals in herds tested by serology or bulk milk ELISA completed during 2003. Currently it is assumed that all dairy herds are subjected to BME testing. Animal numbers for 40 herds currently not included. 2003 figures also assume that the number of dairy farms are the same as were present on APHIS in February 2004.

### Explanatory Comments for Brucellosis Statistics - C1. Premovement Testing

<b>c76</b>	<b>No. premovement tests off-farm in 2008</b>	Number of premovement tests carried out before animal movement occurred (MTO) during the current year.
<b>c70</b>	<b>No. premovement tests off-farm in 2007</b>	Number of premovement tests carried out before animal movement occurred (MTO) during 2007. The requirement for premovement testing was introduced on 1st December 2004.
<b>c64</b>	<b>No. premovement tests off-farm in 2006</b>	Number of premovement tests carried out before animal movement occurred (MTO) during 2006. The requirement for premovement testing was introduced on 1st December 2004.
<b>c45</b>	<b>No. premovement tests off-farm in 2005</b>	Number of premovement tests carried out before animal movement occurred (MTO) during 2005. The requirement for premovement testing was introduced on 1st December 2004.
<b>c46</b>	<b>No. premovement tests off-farm in 2004</b>	Number of premovement tests carried out before animal movement occurred (MTO) during 2004. The requirement for premovement testing was introduced on 1st December 2004.
<b>c77</b>	<b>No. post-movement tests in 2008</b>	Number of movement tests carried out after animal movement occurred (MTI) during the current year.
<b>c71</b>	<b>No. post-movement tests in 2007</b>	Number of movement tests carried out after animal movement occurred (MTI) during 2007. The requirement for premovement testing was introduced on 1st December 2004.
<b>c65</b>	<b>No. post-movement tests in 2006</b>	Number of movement tests carried out after animal movement occurred (MTI) during 2006. The requirement for premovement testing was introduced on 1st December 2004.
<b>c47</b>	<b>No. post-movement tests in 2005</b>	Number of movement tests carried out after animal movement occurred (MTI) during 2005. The requirement for premovement testing was introduced on 1st December 2004.
<b>c48</b>	<b>No. post-movement tests in 2004</b>	Number of movement tests carried out after animal movement occurred (MTI) during 2004. The requirement for premovement testing was introduced on 1st December 2004.
<b>c78</b>	<b>No. premovement animal tests off-farm in 2008</b>	<b>Number of premovement animal tests carried out before animal movement occurred (MTO) during the current year.</b>
<b>c72</b>	<b>No. premovement animal tests off-farm in 2007</b>	Number of premovement animal tests carried out before animal movement occurred (MTO) during 2007.
<b>c66</b>	<b>No. premovement animal tests off-farm in 2006</b>	Number of premovement animal tests carried out before animal movement occurred (MTO) during 2006.
<b>c49</b>	<b>No. premovement animal tests off-farm in 2005</b>	Number of premovement animal tests carried out before animal movement occurred (MTO) during 2005.
<b>c50</b>	<b>No. premovement animal tests off-farm in 2004</b>	Number of premovement animal tests carried out before animal movement occurred (MTO) during 2004.
<b>c73</b>	<b>No. post-movement animal tests in 2008</b>	Number of movement animal tests carried out after animal movement occurred (MTI) during the current year.
<b>c73</b>	<b>No. post-movement animal tests in 2007</b>	Number of movement animal tests carried out after animal movement occurred (MTI) during 2007.
<b>c67</b>	<b>No. post-movement animal tests in 2006</b>	Number of movement animal tests carried out after animal movement occurred (MTI) during 2006.
<b>c51</b>	<b>No. post-movement animal tests in 2005</b>	Number of movement animal tests carried out after animal movement occurred (MTI) during 2005.
<b>c52</b>	<b>No. post-movement animal tests in 2004</b>	Number of movement animal tests carried out after animal movement occurred (MTI) during 2004.
<b>c80</b>	<b>No. reactors detected by premovement tests 2008.</b>	Number of BR serological reactors detected by premovement and post-movement testing during current year.
<b>c74</b>	<b>No. reactors detected by premovement tests 2007.</b>	Number of BR serological reactors detected by premovement and post-movement testing during 2007.
<b>c68</b>	<b>No. reactors detected by premovement tests 2006</b>	Number of BR serological reactors detected by premovement and post-movement testing during 2006.
<b>c53</b>	<b>No. reactors detected by premovement tests 2005</b>	Number of BR serological reactors detected by premovement and post-movement testing during 2005.
<b>c54</b>	<b>No. reactors detected by premovement tests 2004</b>	Number of BR serological reactors detected by premovement and post-movement testing during 2004.
<b>c81</b>	<b>No. inconclusives detected by premovement tests 2008</b>	Number of BR serological inconclusive reactors detected by premovement and post-movement testing during the current year.
<b>c75</b>	<b>No. inconclusives detected by premovement tests 2007</b>	Number of BR serological inconclusive reactors detected by premovement and post-movement testing during 2007.
<b>c69</b>	<b>No. inconclusives detected by premovement tests 2006</b>	Number of BR serological inconclusive reactors detected by premovement and post-movement testing during 2006.
<b>c55</b>	<b>No. inconclusives detected by premovement tests 2005</b>	Number of BR serological inconclusive reactors detected by premovement and post-movement testing during 2005.
<b>c56</b>	<b>No. inconclusives detected by premovement tests 2004</b>	Number of BR serological inconclusive reactors detected by premovement and post-movement testing during 2004.
<b>c57</b>	<b>Total pre-movement and post-movement tests</b>	Total number of pre-movement and post-movement tests carried out since 1st December 2004.
<b>c58</b>	<b>Total pre-movement and post-movement animal tests</b>	Total number of pre-movement and post-movement animal tests carried out since 1st December 2004.

- c59 Total BR reactors detected by movement tests** Total number of BR serological reactors detected by pre-movement and post-movement tests carried out since 1st December 2004.
- c60 Total BR inconclusives detected by movement tests** Total number of BR serological inconclusive reactors detected by pre-movement and post-movement tests carried out since 1st December 2004.

### Explanatory Comments for Brucellosis Statistics - D. Results

<b>D1</b>	<b>No. of herds with BR reactors during month</b>	A herd is included in this figure if the herd number had a BR Blood test reactor during the above month.
<b>D2</b>	<b>No. of new reactor herds during month</b>	A herd is defined as being a Br reactor herd if it had at least one Br reactor animal in that month and no Br reactor animals during the previous 12 months.
<b>D3</b>	No. of new reactor herds since start of year	= Since 1st January
<b>D4</b>	No. of new reactor herds in the previous 12 months	Last 12 month period from the above month.
<b>D26</b>	No. of new reactor herds in previous 13-24 months	Last 13-24 month period from the above month.
<b>D5</b>	<b>No. of BR reactor animals during month</b>	A Br reactor animal is defined as an animal where the manual interpretation field for a blood test is positive ('P') with the first test date being taken as the time at which the animal became a reactor.
<b>D6</b>	No. of BR reactor animals since start of year	= Since 1st January
<b>D7</b>	No. of reactor animals in the previous 12 months	Last 12 month period from the above month.
<b>D27</b>	No. of reactor animals in previous 13-24 months	Last 13-24 month period from the above month.
<b>D8</b>	<b>Herd Prevalence (%)</b>	Number of herds with a Br serological reactor during the above month as a proportion of cattle herds which have presented cattle for a Br herd test during the same time period.
<b>D20</b>	<b>Cumulative herd incidence during 2006 (%)</b>	Number of NEW reactor herds since the start of the calendar year as a proportion of cattle herds which have presented cattle for a Br herd test during the same time period.
<b>D9</b>	<b>Annual herd incidence over the last 12 months (%)</b>	Number of NEW reactor herds during the last 12 months as a proportion of cattle herds which have presented cattle for a Br herd test during the same time period.
<b>D28</b>	<b>Annual herd incidence over the last 13-24 months (%)</b>	Number of NEW reactor herds during the last 13-24 months as a proportion of cattle herds which have presented cattle for a Br herd test during the same time period.
<b>D10</b>	<b>2007 Herd Incidence (%)</b>	Number of NEW reactor herds during 2007 as proportion of cattle herds which have presented cattle for a Br herd test during the same time period.
<b>D11</b>	<b>2006 Herd Incidence (%)</b>	Number of NEW reactor herds during 2006 as proportion of cattle herds which have presented cattle for a Br herd test during the same time period.
<b>D44</b>	<b>2005 Incidence(%)</b>	Number of NEW reactor herds during 2005 as proportion of cattle herds which have presented cattle for a Br herd test during the same time period.
<b>D29</b>	<b>2004 Incidence(%)</b>	Number of NEW reactor herds during 2004 as proportion of cattle herds which have presented cattle for a Br herd test during the same time period.
<b>D15</b>	<b>2003 Herd Incidence (%)</b>	Number of NEW reactor herds during 2003 as proportion of cattle herds which have presented cattle for a Br herd test during the same time period.
<b>D21</b>	<b>Cumulative animal incidence during 2006 (%)</b>	Number of BR reactor animals since the start of the calendar year divided by the number of cattle tested for Br within the same time period
<b>D12</b>	<b>Annual animal incidence over the last 12 months (%)</b>	Number of Br reactor animals over the last 12 months divided by the number of cattle tested for Br within the same time period.
<b>D30</b>	<b>Annual animal incidence over the last 13-24 months (%)</b>	Number of Br reactor animals over the last 13-24 months divided by the number of cattle tested for Br within the same time period.
<b>D13</b>	<b>2007 Animal Incidence (%)</b>	Number of Br reactor animals during 2007 divided by the number of cattle tested for Br within the same time period.
<b>D14</b>	<b>2006 Animal Incidence (%)</b>	Number of Br reactor animals during 2006 divided by the number of cattle tested for Br within the same time period.
<b>D45</b>	<b>2005 Animal Incidence (%)</b>	Number of Br reactor animals during 2005 divided by the number of cattle tested for Br within the same time period.
<b>D31</b>	<b>2004 Animal Incidence (%)</b>	Number of Br reactor animals during 2004 divided by the number of cattle tested for Br within the same time period.
<b>D16</b>	<b>2003 Animal Incidence (%)</b>	Number of Br reactor animals during 2003 divided by the number of cattle tested for Br within the same time period.

<b>d33</b>	<b>APT during current month</b>	= The reactor disclosure rate per 1,000 animal blood tests during current month.
<b>D22</b>	<b>APT since start of 2005</b>	The reactor disclosure rate per 1,000 animal blood tests since the start of the calendar year.
<b>D17</b>	<b>Current 12 month moving average APT</b>	The reactor disclosure rate per 1,000 animal blood tests. Current refers to the rate over the last 12 months.
<b>D19</b>	<b>2007 APT</b>	The reactor disclosure rate per 1,000 animal blood tests during the calendar year.
<b>D51</b>	<b>2006 APT</b>	The reactor disclosure rate per 1,000 animal blood tests during the calendar year.
<b>D46</b>	<b>2005 APT</b>	The reactor disclosure rate per 1,000 animal blood tests during the calendar year.
<b>d32</b>	<b>2004 APT</b>	The reactor disclosure rate per 1,000 animal blood tests during the calendar year.
<b>D18</b>	<b>2003 APT</b>	The reactor disclosure rate per 1,000 animal blood tests during the calendar year.
<b>D23</b>	<b>No. negative in contacts since start of year</b>	Number of animals taken as negative in contacts since the start of the year
<b>D25</b>	<b>No. negative in contacts during 2007</b>	Number of animals taken as negative in contacts during 2007
<b>D52</b>	<b>No. negative in contacts during 2006</b>	Number of animals taken as negative in contacts during 2006
<b>D47</b>	<b>No. negative in contacts during 2005</b>	Number of animals taken as negative in contacts during 2005
<b>D34</b>	<b>No. negative in contacts during 2004</b>	Number of animals taken as negative in contacts during 2004
<b>D24</b>	<b>No. negative in contacts during 2003</b>	Number of animals taken as negative in contacts during 2003
<b>D37</b>	<b>Reactor removal time 2008</b>	Figures given are median values for working days estimated from calendar days (calendar days multiplied by 0.685). Reactors which are not yet slaughtered or where they they were first declared as reactors at slaughter are excluded.
<b>D50</b>	<b>Reactor removal time 2006</b>	Figures given are median values for working days estimated from calendar days (calendar days multiplied by 0.685). Reactors which are not yet slaughtered or where they they were first declared as reactors at slaughter are excluded.
<b>D35</b>	<b>Reactor removal time 2005</b>	Figures given are median values for working days estimated from calendar days (calendar days multiplied by 0.685). Reactors which are not yet slaughtered or where they they were first declared as reactors at slaughter are excluded.
<b>D36</b>	<b>Reactor removal time 2004</b>	Figures given are median values for working days estimated from calendar days (calendar days multiplied by 0.685). Reactors which are not yet slaughtered or where they they were first declared as reactors at slaughter are excluded.
<b>D38</b>	<b>Herds with infection confirmed 2008</b>	Herds where samples have been subjected to culture for <i>Brucella abortus</i> and where the infection was confirmed.
<b>D39</b>	<b>Herds with infection not confirmed 2008</b>	Herds where samples have been subjected to culture for <i>Brucella abortus</i> and where the infection was NOT confirmed within the same calendar year.
<b>D40</b>	<b>% Herds with infection confirmed this year</b>	Percentage of herds where samples have been subjected to culture for <i>Brucella abortus</i> which were found to be positive for infection divided by the total number of herds where samples have been subjected to culture for <i>Brucella abortus</i> .
<b>D56</b>	<b>% Herds with infection confirmed 2007</b>	Percentage of herds where samples have been subjected to culture for <i>Brucella abortus</i> which were found to be positive for infection divided by the total number of herds where samples have been subjected to culture for <i>Brucella abortus</i> in 2007
<b>D53</b>	<b>% Herds with infection confirmed 2006</b>	Percentage of herds where samples have been subjected to culture for <i>Brucella abortus</i> which were found to be positive for infection divided by the total number of herds where samples have been subjected to culture for <i>Brucella abortus</i> in 2006
<b>D48</b>	<b>% Herds with infection confirmed 2005</b>	Percentage of herds where samples have been subjected to culture for <i>Brucella abortus</i> which were found to be positive for infection divided by the total number of herds where samples have been subjected to culture for <i>Brucella abortus</i> in 2005
<b>D41</b>	<b>Reactor animals with infection confirmed 2008</b>	Animals where samples have been subjected to culture for <i>Brucella abortus</i> and where the infection was confirmed.
<b>D42</b>	<b>Reactor animals with infection not confirmed 2008</b>	Animals where samples have been subjected to culture for <i>Brucella abortus</i> and where the infection was NOT confirmed.
<b>D43</b>	<b>% Reactor animals with infection confirmed 2008</b>	Percentage of animals where samples have been subjected to culture for <i>Brucella abortus</i> which were found to be positive for infection divided by the total number of animals where samples have been subjected to culture for <i>Brucella abortus</i> .

<b>D57</b>	<b>% Reactor animals with infection confirmed in 2007</b>	Percentage of reactor animals where samples have been subjected to culture for <i>Brucella abortus</i> which were found to be positive for infection divided by the total number of animals where samples have been subjected to culture for <i>Brucella abortus</i> in 2007
<b>D54</b>	<b>% Reactor animals with infection confirmed in 2006</b>	Percentage of reactor animals where samples have been subjected to culture for <i>Brucella abortus</i> which were found to be positive for infection divided by the total number of animals where samples have been subjected to culture for <i>Brucella abortus</i> in 2006
<b>D49</b>	<b>% Reactor animals with infection confirmed in 2005</b>	Percentage of reactor animals where samples have been subjected to culture for <i>Brucella abortus</i> which were found to be positive for infection divided by the total number of animals where samples have been subjected to culture for <i>Brucella abortus</i> in 2005
<b>D58</b>	<b>No. of new BR herd breakdowns during current year which were confirmed by bacteriological culture</b>	The number of new BR herd breakdowns during the current year where <i>Brucella abortus</i> was cultured.
<b>d66</b>	<b>No. of new BR herd breakdowns during last 12 months which were confirmed by bacteriological culture</b>	The number of new BR herd breakdowns during the last 12 months where <i>Brucella abortus</i> was cultured.
<b>D59</b>	<b>No. of new BR herd breakdowns during 2007 confirmed by bacteriological culture</b>	The number of new BR herd breakdowns during 2007 where <i>Brucella abortus</i> was cultured
<b>D60</b>	<b>No. of new BR herd breakdowns during 2006 confirmed by bacteriological culture</b>	The number of new BR herd breakdowns during 2006 where <i>Brucella abortus</i> was cultured
<b>D61</b>	<b>No. of new BR herd breakdowns during 2005 confirmed by bacteriological culture</b>	The number of new BR herd breakdowns during 2005 where <i>Brucella abortus</i> was cultured
<b>d62</b>	<b>Cumulative culture confirmed herd incidence for 2008 (%)</b>	The number of new BR herd breakdowns during the current year where <i>Brucella abortus</i> was cultured divided by the number of herds with cattle that were tested for brucellosis during the same time period expressed as a percentage