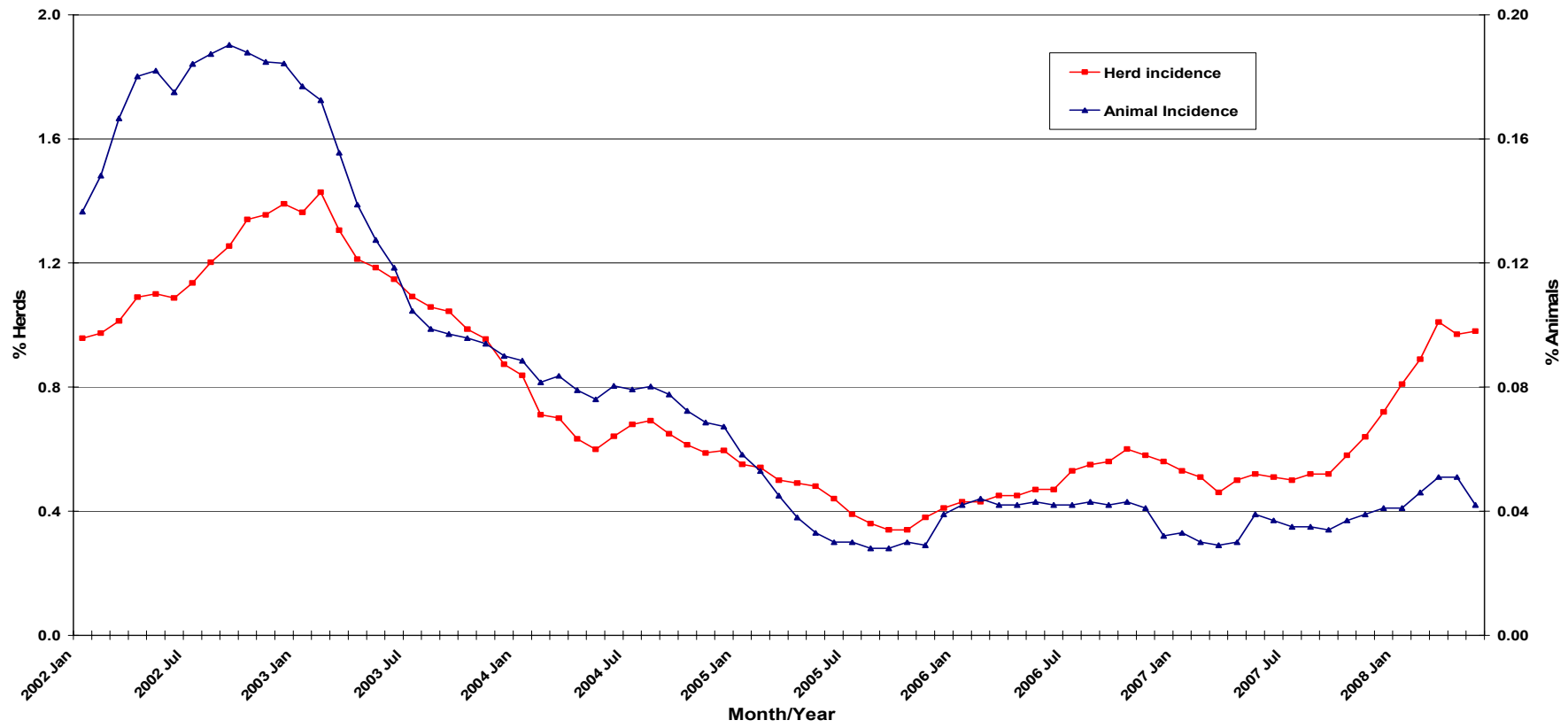


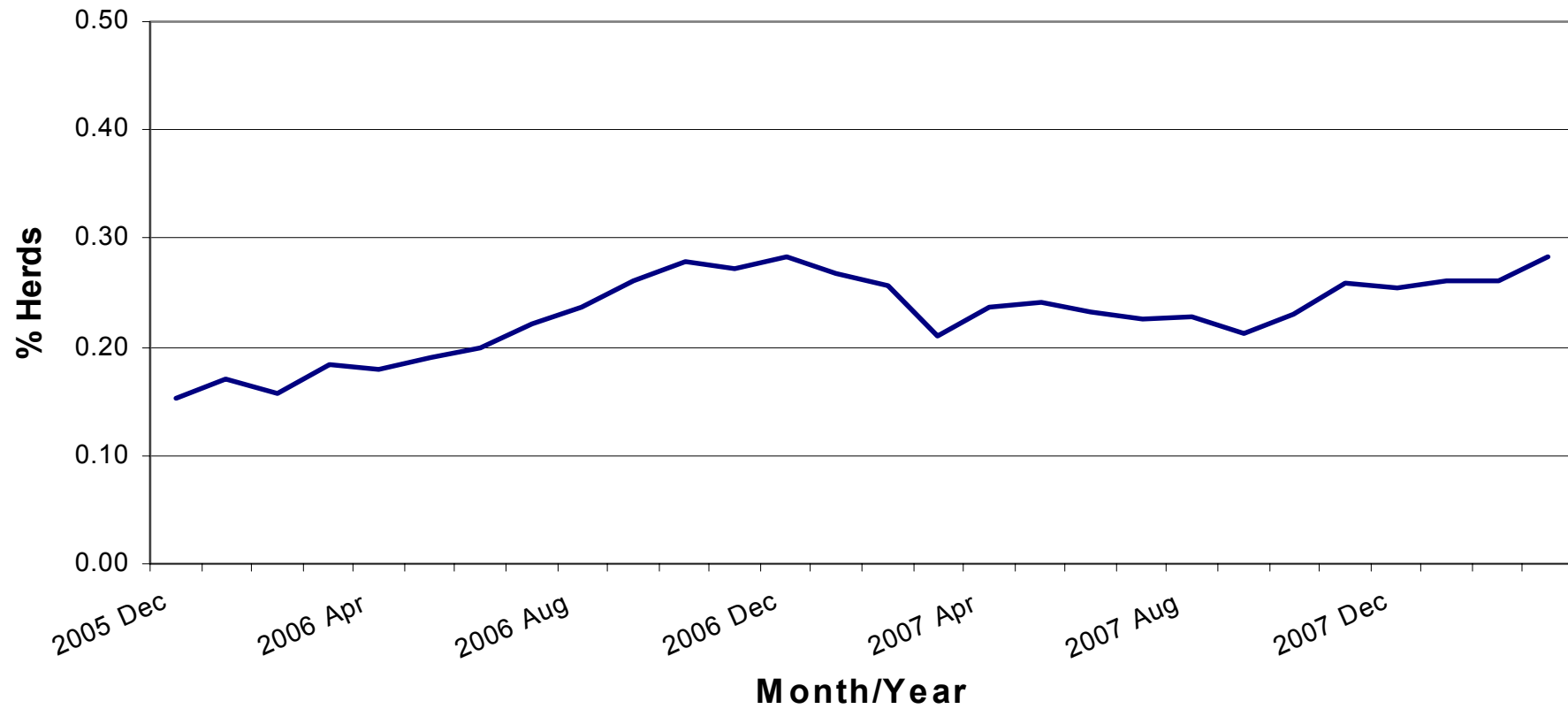
Brucellosis: Statistics for May 2008

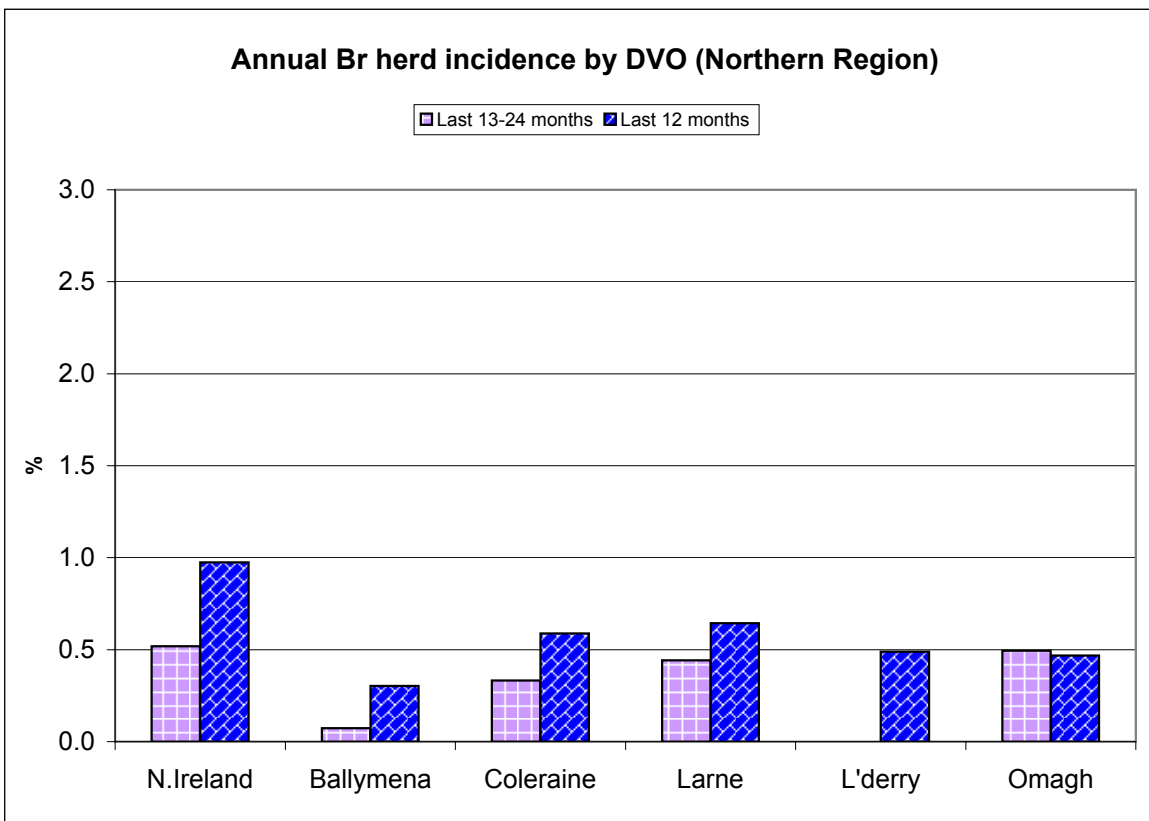
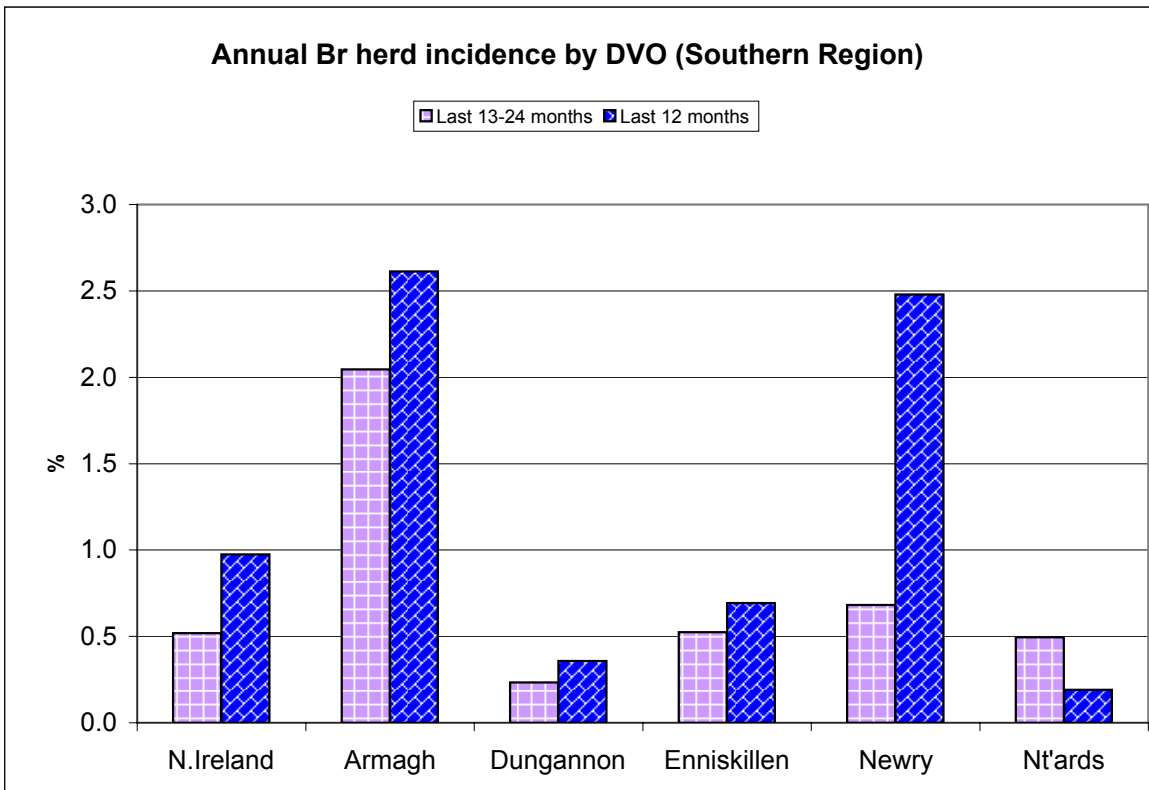
Tests Completed	Herds	Number of herds tested (any test), by DVO	Cumulative Statistics	
		Number of herds with herd-level test, by DVO	Cumulative Statistics	
		Number of herds with any risk test, by DVO		
		Number of herds with herd-level risk test, by DVO		
		Number of herds with herd-level restricted test, by DVO		
		Number of herds monitored by BME or blood sampling	Number of herds monitored by BME alone	
	Animals	Total number of tests performed, by DVO	Cumulative Statistics	Premovement testing
		Total number of animals tests, by DVO	Cumulative Statistics	
		Total number of restricted herd tests, by DVO	Number of animals tested	
		Total number of herd tests, by DVO	Number of animals tested	
		Total number of individual tests, by DVO	Number of animals tested	
		Total number of CTA tests, by DVO	Number of animals tested	
		Total number of CTT tests, by DVO	Number of animals tested	
		Total number of animals tested, by DVO		
	Current total animals under Br surveillance	Number of animals tested by BME alone		
Summary Statistics	Herds with Br reactors during month, by DVO	Cumulative Statistics	APT	
	Number of new reactor herds, by DVO	Cumulative Statistics	Negative-in-contacts	
	Number of new reactor animals, by DVO		Reactor removal times	
	Herd Prevalance		Confirmed infection	
	Herd Incidence			
	Animal Incidence			
	Number of reactor animals by month and by DVO			
	Number of new reactor herds by month and by DVO			
	Total number of all reactor herds in 2003, by DVO			
	Summary Charts	Current Animal Incidence Charts	Monthly BR reactors chart	
Yearly Animal Incidence Charts		BR new herd breakdowns chart		
Current Herd Incidence Charts		BR herd & animal incidence		
Yearly Herd Incidence Charts				

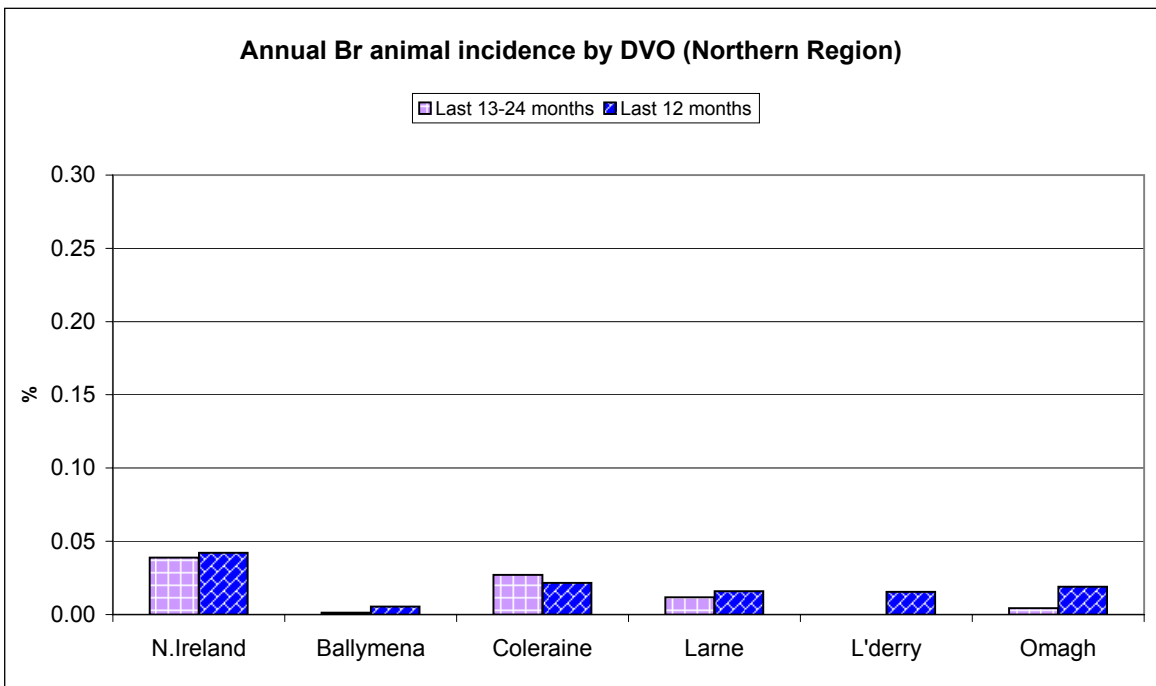
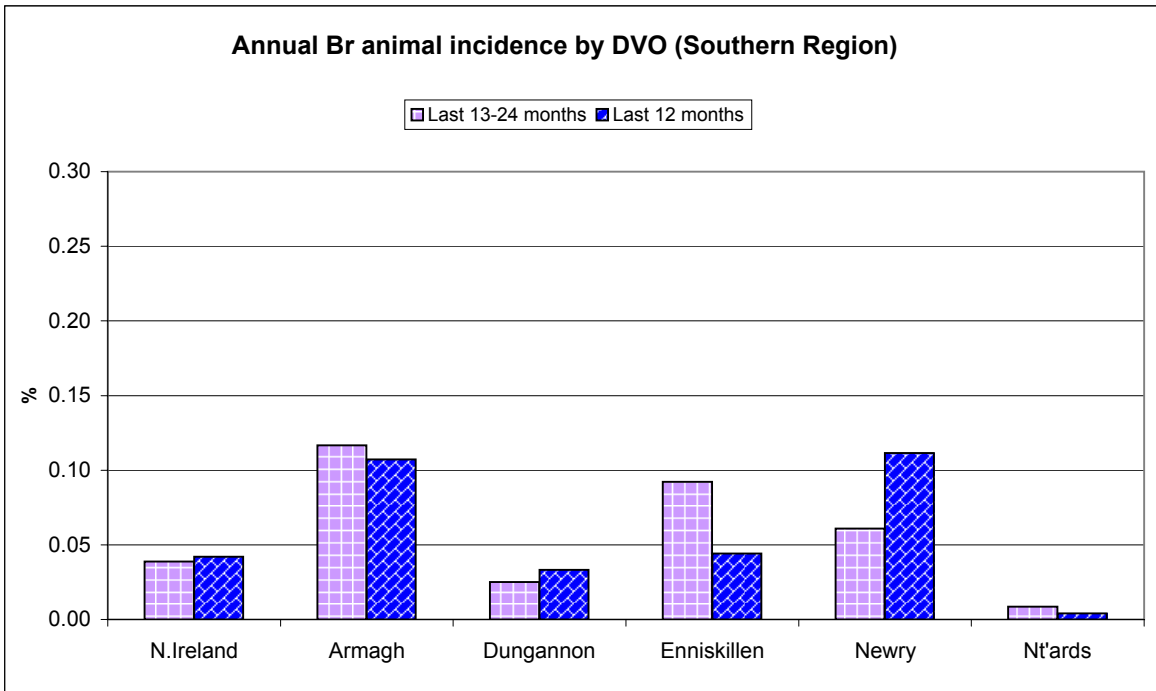
BR Herd and Animal Incidence
(12 month moving average: January 2002 to May 2008)



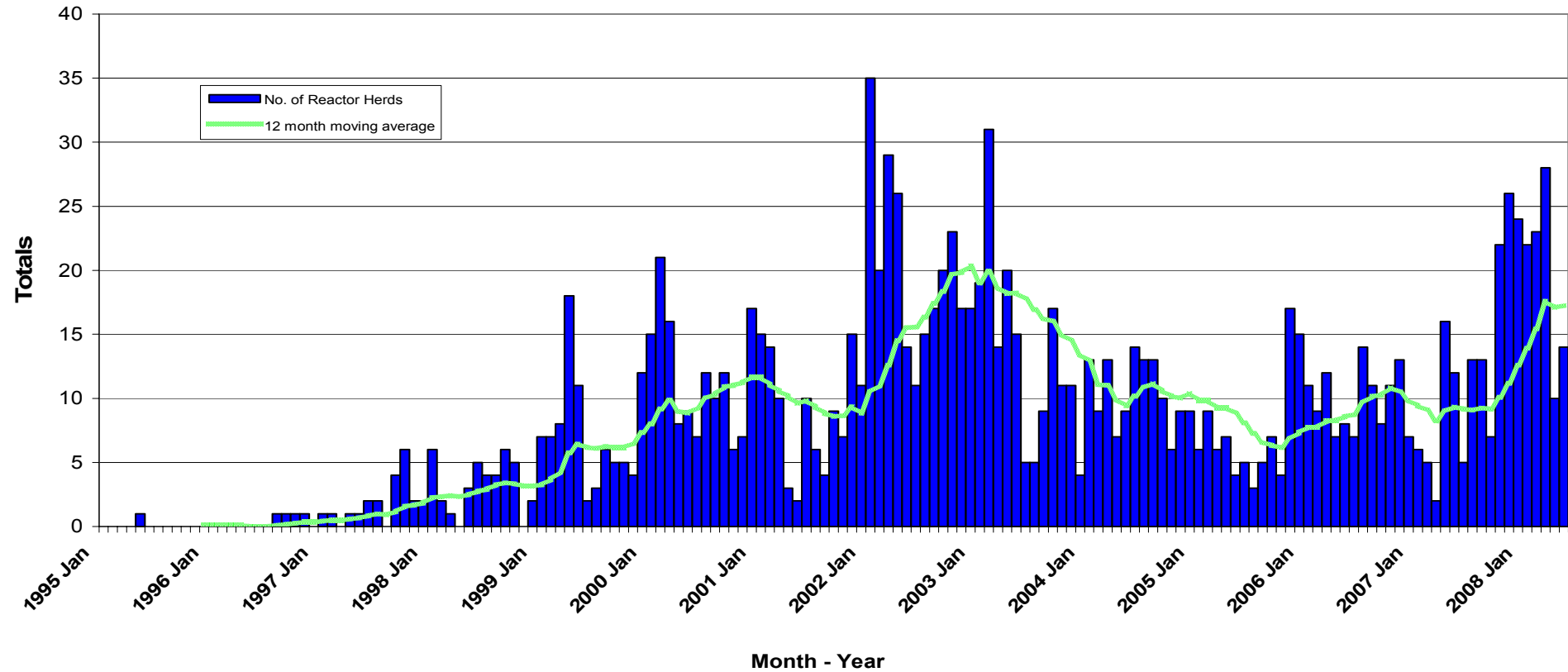
BR annual herd incidence where infection confirmed by culture: December 2005 to March 2008



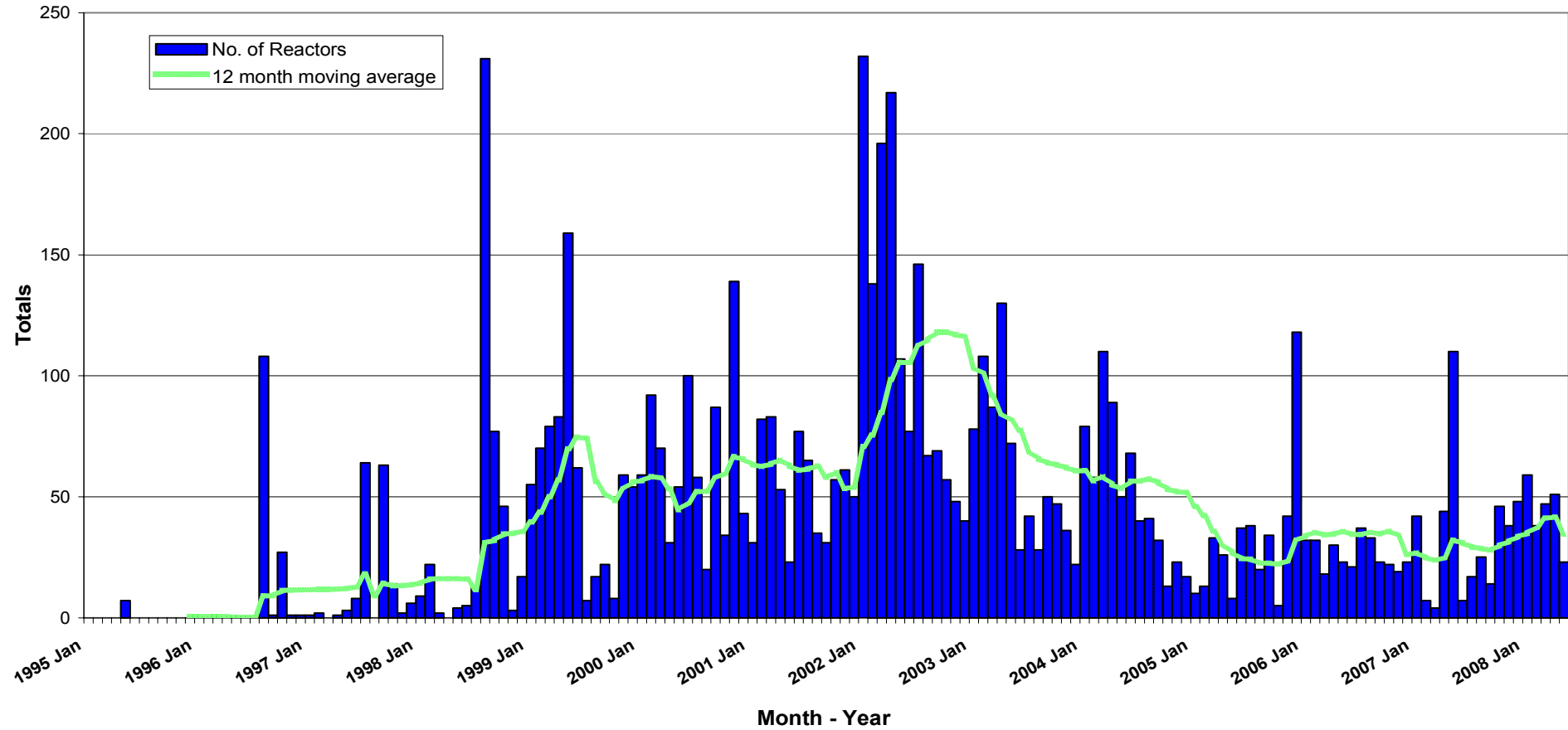


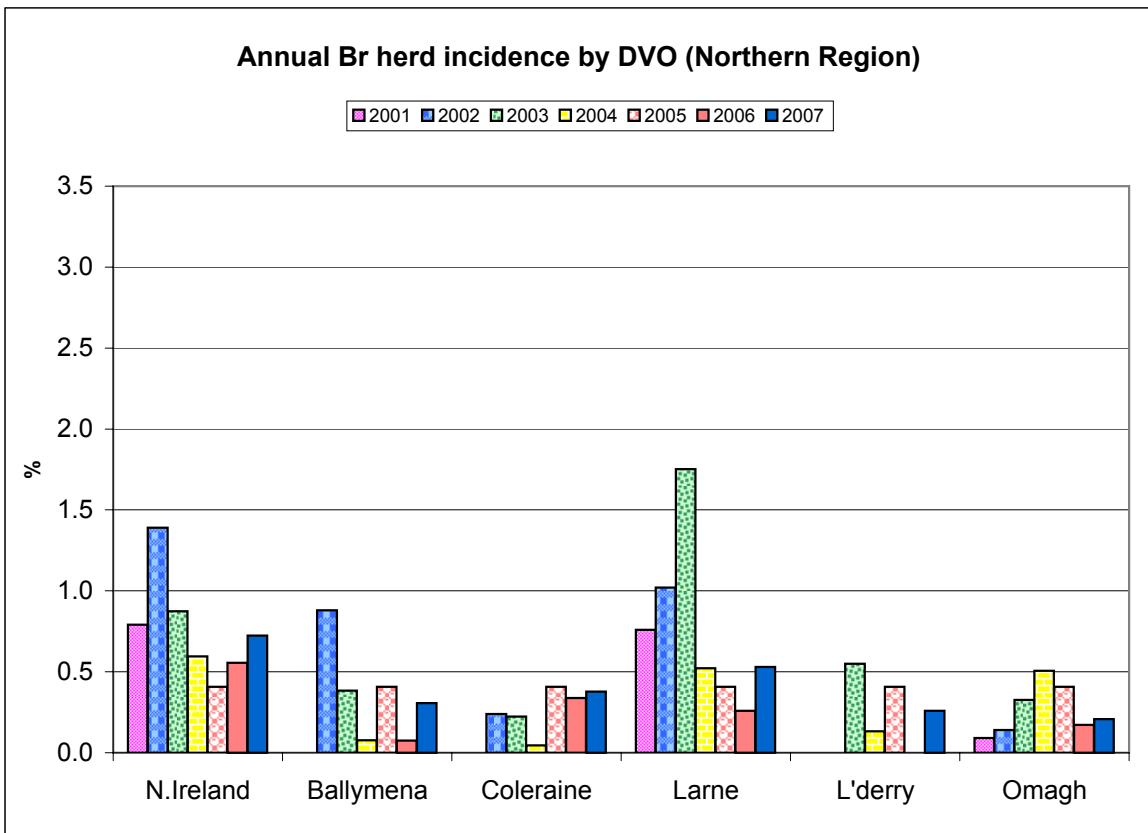
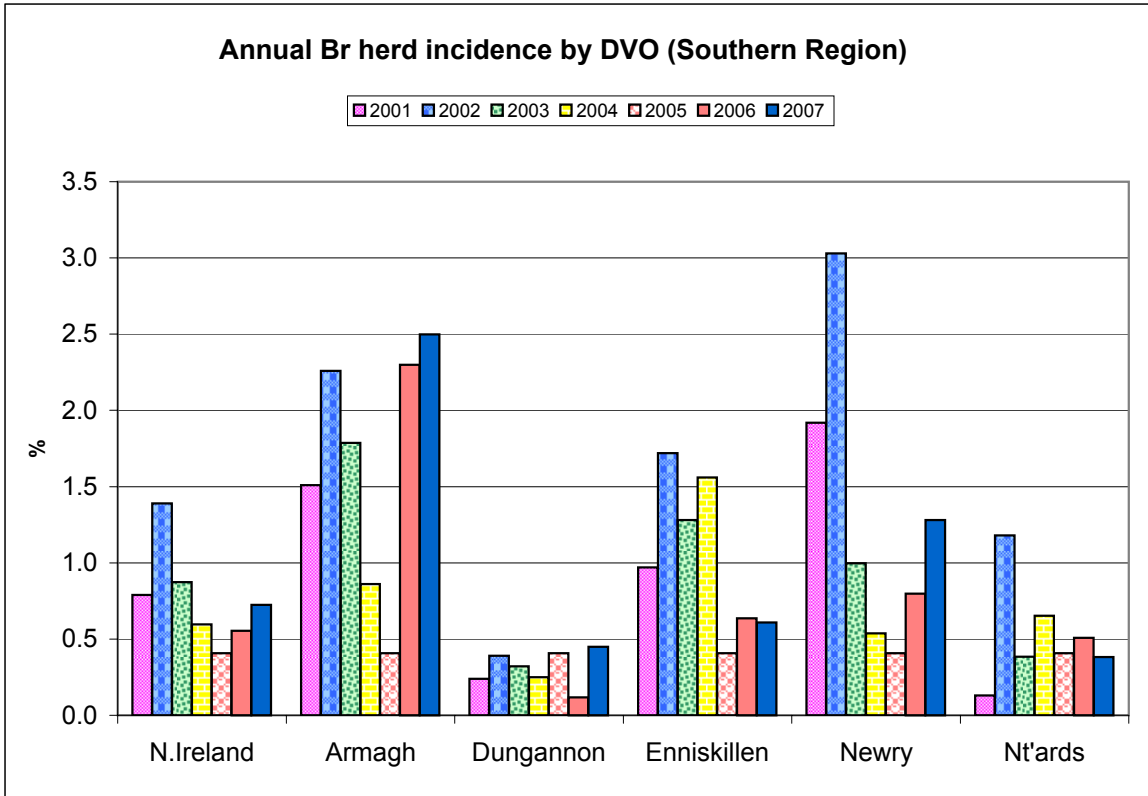


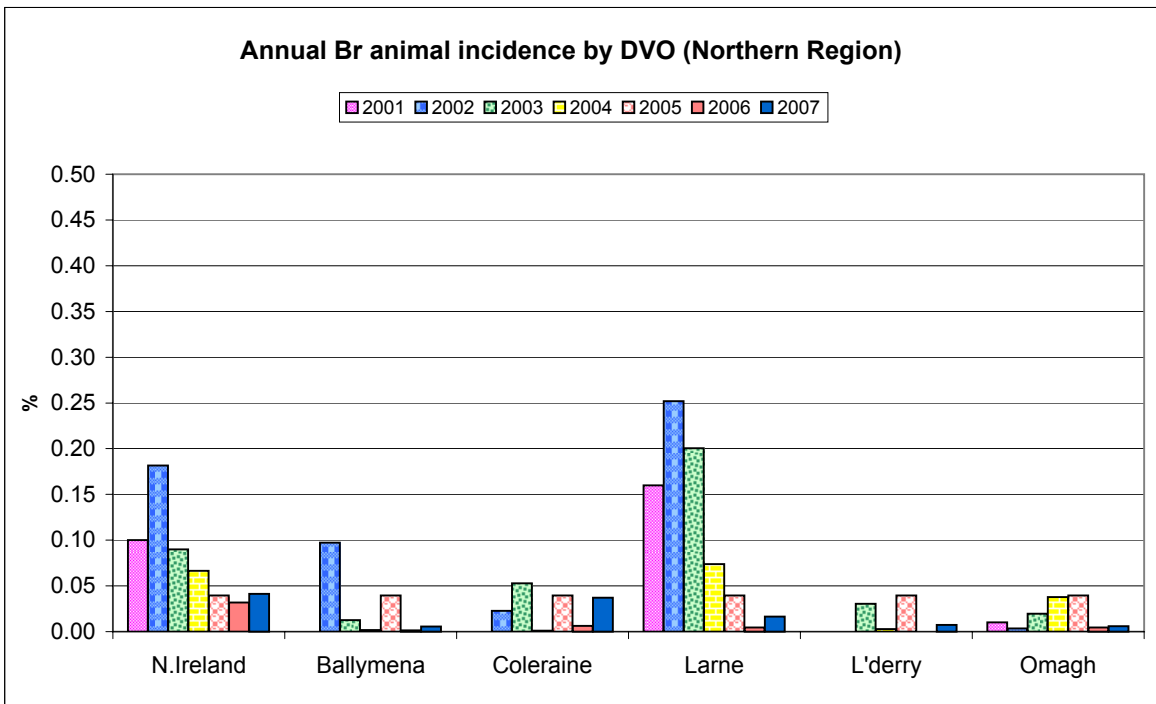
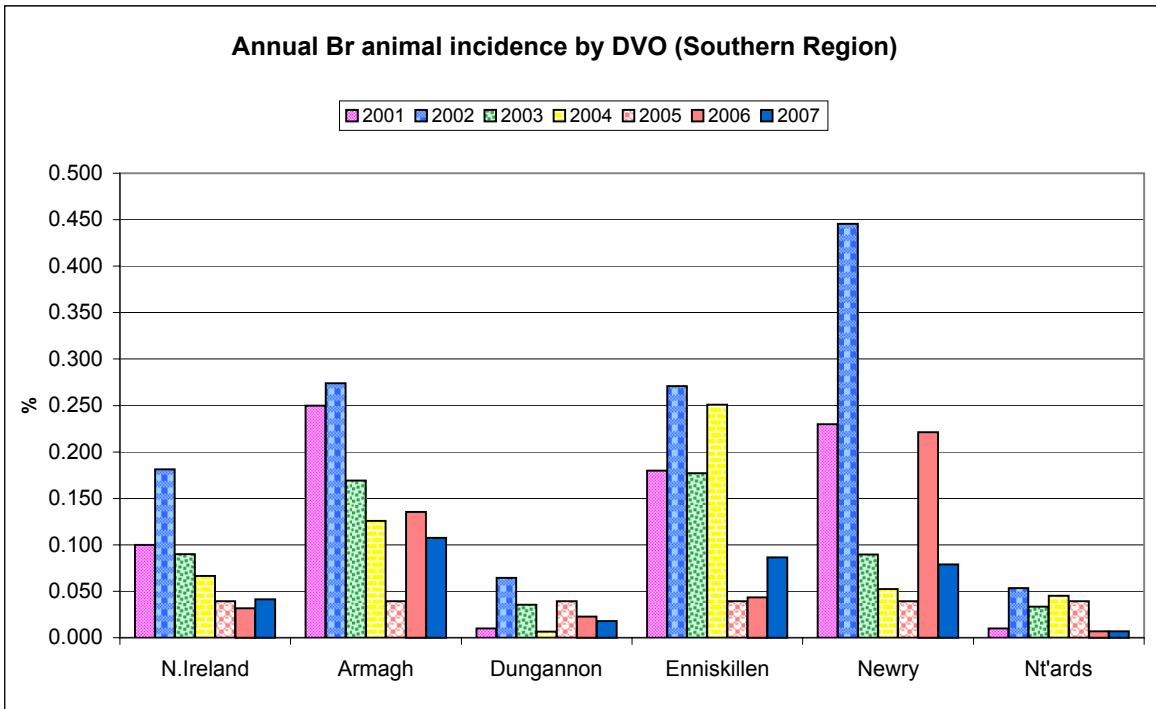
New BR Reactor Herds: January 1995 to May 2008



BR Reactors: January 1995 to May 2008







Month = May 2008

Ref.	Total	Armagh	Ballymena	Coleraine	Dungannon	Enniskillen	Larne	L'derry	Newry	Nt'ards	Omagh	
d1	No. of herds with Br reactors during month	15	2	0	1	0	0	0	11	0	1	
d2	No. of new reactor herds during month	14	2	0	1	0	0	0	10	0	1	
d3	No. of new reactor herds since start of year	97	18	0	7	1	8	5	48	0	8	
d4	No. of new reactor herds in the previous 12 months	207	49	4	14	9	21	10	79	3	14	
d26	No. of new reactor herds in previous 13-24 months	112	39	1	8	6	16	7	22	8	5	
d5	No. of Br reactor animals during month	23	8	0	1	0	0	0	13	0	1	
d6	No. of Br reactor animals since start of year	218	49	0	9	19	27	7	85	0	19	
d7	No. of reactor animals in the previous 12 months	413	101	4	28	35	51	15	143	4	26	
d27	No. of reactor animals in previous 13-24 months	386	110	1	36	28	107	11	78	9	6	
d8	Herd Prevalence (%)	0.83	0.93	0.00	0.59	0.00	0.00	0.00	2.15	0.00	0.51	
d20	Cumulative herd incidence this year (%)	0.73	1.29	0.00	0.47	0.07	0.43	0.50	0.44	2.28	0.00	0.44
d9	Annual herd incidence over the last 12 months (%)	0.98	2.61	0.30	0.59	0.36	0.69	0.64	0.49	2.48	0.19	0.47
d28	Annual herd incidence over the last 13-24 months (%)	0.52	2.05	0.07	0.33	0.23	0.52	0.44	0.00	0.68	0.68	0.49
d10	2007 Herd Incidence (%)	0.72	2.50	0.31	0.38	0.45	0.61	0.53	0.26	1.28	0.38	0.21
d11	2006 Herd Incidence (%)	0.56	2.30	0.07	0.34	0.12	0.64	0.26	0.00	0.80	0.51	0.17
d44	2005 Herd Incidence (%)	0.41	0.32	0.22	0.21	0.27	0.91	0.38	0.24	0.55	0.18	0.33
d29	2004 Herd Incidence (%)	0.60	0.86	0.08	0.04	0.25	1.56	0.52	0.13	0.54	0.65	0.51
d15	2003 Herd Incidence (%)	0.87	1.79	0.38	0.22	0.32	1.28	1.75	0.55	1.00	0.38	0.33
d21	Cumulative animal incidence this year (%)	0.031	0.069	0.000	0.010	0.028	0.035	0.011	0.012	0.092	0.000	0.020
d12	Annual animal incidence over last 12 months (%)	0.042	0.107	0.005	0.022	0.033	0.044	0.016	0.015	0.112	0.004	0.019
d30	Annual animal incidence over last 13-24 months (%)	0.039	0.117	0.001	0.027	0.025	0.092	0.012	0.000	0.061	0.009	0.004
d13	2007 Animal Incidence (%)	0.041	0.107	0.006	0.037	0.018	0.086	0.016	0.008	0.079	0.007	0.006
d14	2006 Animal Incidence (%)	0.032	0.135	0.001	0.006	0.023	0.043	0.004	0.000	0.221	0.007	0.004
d45	2005 Animal Incidence (%)	0.039	0.105	0.004	0.004	0.008	0.179	0.009	0.005	0.031	0.006	0.009
d31	2004 Animal Incidence (%)	0.067	0.126	0.002	0.001	0.007	0.251	0.074	0.003	0.052	0.045	0.038
d16	2003 Animal Incidence (%)	0.090	0.169	0.013	0.053	0.035	0.177	0.201	0.030	0.090	0.033	0.019

d33	APT during current month	0.30	0.87	0.00	0.12	0.00	0.00	0.00	0.00	0.86	0.00	0.10
d22	APT since start of year	0.34	0.60	0.00	0.13	0.34	0.32	0.12	0.13	0.87	0.00	0.22
d17	Current 12 month moving average APT	0.31	0.59	0.05	0.20	0.28	0.30	0.14	0.13	0.74	0.04	0.15
d19	2007 APT	0.32	0.60	0.05	0.35	0.16	0.60	0.14	0.08	0.57	0.06	0.05
d51	2006 APT	0.24	0.81	0.01	0.06	0.19	0.28	0.04	0.00	0.45	0.07	0.04
d46	2005 APT	0.31	0.77	0.04	0.04	0.07	1.05	0.07	0.05	0.23	0.05	0.07
d32	2004 APT	0.50	0.70	0.02	0.01	0.06	1.49	0.55	0.03	0.35	0.38	0.29
d18	2003 APT	0.66	0.91	0.11	0.52	0.35	1.13	1.50	0.28	0.50	0.29	0.18
d23	No. negative in contacts since start of year	3601	556	0	36	775	275	5	93	1566	2	293
d25	No. negative in contacts during 2007	6183	1300	2	1187	183	765	698	1	1972	4	71
d52	No. negative in contacts during 2006	4673	2888	1	3	116	416	0	8	1241	0	0
d47	No. negative in contacts during 2005	2580	46	1	3	205	1314	82	0	313	237	379
d34	No. negative in contacts during 2004	6035	1428	1	5	64	1984	1043	3	894	242	371
d24	No. negative in contacts during 2003	10798	2129	314	389	389	2085	2991	105	1616	719	61
d37	Reactor removal time 2008	15.1										
d55	Reactor removal time 2007	12.3	12.3	14.4	11.6	12.3	14.4	12.3	13.0	11.0	11.0	10.3
d50	Reactor removal time 2006	12.3	13.0	8.9	14.3	8.9	15.0	11.9	0.0	10.9	11.6	11.9
d35	Reactor removal time 2005	14.4	19.7	11.0	13.7	8.9	13.0	11.3	12.1	10.3	9.6	11.9
d36	Reactor removal time 2004	14.4	12.3	9.0	20.6	18.1	15.1	11.0	8.2	14.4	19.2	17.8
d38	Reactor herds with infection confirmed this year	21	6	0	1	1	4	0	1	6	0	2
d39	Reactor herds with infection not confirmed this year	75	12	0	7	1	4	6	2	38	0	5
d40	% Reactor herds with infection confirmed this year	21.9	33.3	0.0	12.5	50.0	50.0	0.0	33.3	13.6	0.0	28.6
d56	% Reactor herds with infection confirmed in 2007	37.1	17.4	0.0	37.5	36.4	80.0	44.4	0.0	52.6	0.0	14.3
d53	% Reactor herds with infection confirmed in 2006	54.1	75.6	0.0	0.0	66.7	66.7	25.0	0.0	53.8	0.0	0.0
d48	% Reactor herds with infection confirmed in 2005	45.2	100.0	0.0	0.0	0.0	73.3	33.3	0.0	40.0	50.0	45.5
d41	Reactor animals with infection confirmed	37	9	0	1	5	8	0	1	10	0	3
d42	Reactor animals with infection not confirmed	93	16	0	7	1	5	7	2	48	0	7
d43	% Reactor animals with infection confirmed	28.5	36.0	0.0	12.5	83.3	61.5	0.0	33.3	17.2	0.0	30.0
d57	% Reactor animals with infection confirmed in 2007	41.6	25.0	0.0	28.6	50.0	75.0	54.5	0.0	46.7	0.0	12.5
d54	% Reactor animals with infection confirmed in 2006	64.1	78.5	0.0	0.0	80.0	75.0	25.0	0.0	60.5	0.0	0.0

d49	% Reactor animals with infection confirmed in 2005	58.3	100.0	0.0	0.0	0.0	79.7	50.0	0.0	47.6	60.0	45.5
d58	No. of new BR herd breakdowns during current year which were confirmed by bacteriological culture	13	4	0	1	0	2	0	1	5	0	0
d66	No. of new BR herd breakdowns during last 12 months which were confirmed by bacteriological culture	59	11	0	4	4	14	3	1	21	0	1
d59	No. of new BR herd breakdowns during 2007 confirmed by bacteriological culture	53	9	0	3	4	14	3	0	19	0	1
d60	No. of new BR herd breakdowns during 2006 confirmed by bacteriological culture	60	31	0	0	2	11	1	0	15	0	0
d61	No. of new BR herd breakdowns during 2005 confirmed by bacteriological culture	33	2	0	0	0	20	2	0	5	1	3
d62	Cumulative culture confirmed herd incidence for 2008 (%)	0.10	0.29	0.00	0.07	0.00	0.11	0.00	0.22	0.24	0.00	0.00
d67	Culture confirmed herd incidence for last 12 months (%)	0.28	0.59	0.00	0.17	0.16	0.46	0.19	0.12	0.66	0.00	0.03
d63	Culture confirmed herd incidence 2007 (%)	0.25	0.49	0.00	0.13	0.16	0.47	0.20	0.00	0.59	0.00	0.03
d64	Culture confirmed herd incidence 2006 (%)	0.28	1.62	0.00	0.00	0.08	0.37	0.06	0.00	0.46	0.00	0.00
d65	Culture confirmed herd incidence 2005 (%)	0.15	0.11	0.00	0.00	0.00	0.65	0.13	0.00	0.15	0.06	0.10

Brucellosis: number of reactor herds by month and by DVO in 2008 and unique herd breakdowns during the year

2008		DVO_CODE											
Year	Month	Armagh	Ballymena	Coleraine	Dungannon	Enniskillen	Larne	L'Derry	Newry	Nt'Ards	Omagh	Total	
2008	1	5	0	2	0	1	0	0	13	0	1	22	
2008	2	3	0	0	0	2	4	1	10	0	3	23	
2008	3	8	0	2	0	3	0	1	13	0	1	28	
2008	4	0	0	2	1	2	1	0	2	0	2	10	
2008	5	2	0	1	0	0	0	0	10	0	1	14	
2008	6											0	
2008	7											0	
2008	8											0	
2008	9											0	
2008	10											0	
2008	11											0	
2008	12											0	
Total		18	0	7	1	8	5	2	48	0	8	97	

Unique Herd Breakdowns		DVO_CODE											
Year	Armagh	Ballymena	Coleraine	Dungannon	Enniskillen	Larne	L'Derry	Newry	Nt'Ards	Omagh	Total Herds		
2008	19	0	8	2	8	6	3	52	0	8	106		

Brucellosis: number of reactor herds by month and by DVO in 2007 and unique herd breakdowns during the year

2007		DVO_CODE											
Year	Month	Armagh	Ballymena	Coleraine	Dungannon	Enniskillen	Larne	L'Derry	Newry	Nt'Ards	Omagh	Total	
2007	1	2	0	0	0	2	0	0	1	1	0	6	
2007	2	2	0	0	0	0	0	0	2	1	0	5	
2007	3	1	0	0	0	0	0	0	1	0	0	2	
2007	4	4	0	0	3	3	3	0	3	0	0	16	
2007	5	6	0	2	0	0	0	0	3	1	0	12	
2007	6	3	0	0	0	1	0	1	0	0	0	5	
2007	7	2	0	1	2	2	0	0	5	0	1	13	
2007	8	5	0	0	1	0	0	0	6	0	1	13	
2007	9	5	0	0	0	1	0	0	1	0	0	7	
2007	10	5	1	2	1	3	2	0	6	1	1	22	
2007	11	4	2	2	2	3	2	1	8	1	1	26	
2007	12	7	1	2	2	3	1	0	5	1	2	24	
Total		46	4	9	11	18	8	2	41	6	6	151	

Unique Herd Breakdowns		DVO_CODE											
Year	Armagh	Ballymena	Coleraine	Dungannon	Enniskillen	Larne	L'Derry	Newry	Nt'Ards	Omagh	Total Herds		
2007	47	4	9	11	20	9	2	42	6	7	157		

Brucellosis: number of reactor herds by month and by DVO in 2006 and unique herd breakdowns during the year

2006		DVO_CODE											
Year	Month	Armagh	Ballymena	Coleraine	Dungannon	Enniskillen	Larne	L'Derry	Newry	Nt'Ards	Omagh	Total	
2006	1	7	0	0	0	1	0	0	3	0	0	11	
2006	2	2	0	1	0	1	0	0	4	1	0	9	
2006	3	6	0	0	0	2	0	0	4	0	0	12	
2006	4	4	0	1	0	1	0	0	0	1	0	7	
2006	5	1	0	0	0	3	0	0	3	1	0	8	
2006	6	3	0	0	0	1	0	0	1	1	1	7	
2006	7	6	0	1	0	2	0	0	3	1	1	14	
2006	8	6	0	0	0	2	0	0	2	1	0	11	
2006	9	1	0	0	1	4	0	0	2	0	0	8	
2006	10	3	0	1	2	0	0	0	2	1	2	11	
2006	11	3	1	3	0	1	2	0	1	1	1	13	
2006	12	2	0	1	0	1	2	0	1	0	0	7	
Total		44	1	8	3	19	4	0	26	8	5	118	

Unique Herd Breakdowns		DVO_CODE											
Year	Armagh	Ballymena	Coleraine	Dungannon	Enniskillen	Larne	L'Derry	Newry	Nt'Ards	Omagh	Total Herds		
2006	44	1	8	3	20	4	0	26	8	6	120		

A herd is defined as being a Br reactor herd if it had at least one Br reactor animal in that month and no Br reactor animals during the previous 12 months.

A Br unique herd breakdown is defined as a herd which has had at least one BR reactor during the specified calendar year irrespective of any Br reactors during the previous calendar year.

Brucellosis: number of reactor animals by month and by DVO 2008

2008	DVO_CODE											
Year	Month	Armagh	Ballymena	Coleraine	Dungannon	Enniskillen	Larne	L'Derry	Newry	Nt'Ards	Omagh	Total
2008	1	5	0	3	18	1	1	0	30	0	1	59
2008	2	9	0	1	0	2	5	1	17	0	3	38
2008	3	18	0	2	0	6	0	2	16	0	3	47
2008	4	9	0	2	1	18	1	0	9	0	11	51
2008	5	8	0	1	0	0	0	0	13	0	1	23
2008	6											
2008	7											
2008	8											
2008	9											
2008	10											
2008	11											
2008	12											
Total		49	0	9	19	27	7	3	85	0	19	218

Brucellosis: number of reactor animals by month and by DVO 2007

2007	DVO_CODE											
Year	Month	Armagh	Ballymena	Coleraine	Dungannon	Enniskillen	Larne	L'Derry	Newry	Nt'Ards	Omagh	Total
2007	1	2	0	0	0	34	3	0	2	1	0	42
2007	2	2	0	0	0	0	0	0	4	1	0	7
2007	3	1	0	0	0	0	0	0	2	0	1	4
2007	4	4	0	0	3	20	4	0	13	0	0	44
2007	5	38	0	30	0	19	0	0	22	1	0	110
2007	6	5	0	0	0	1	0	1	0	0	0	7
2007	7	3	0	1	2	2	0	0	8	0	1	17
2007	8	13	0	0	3	0	0	0	8	0	1	25
2007	9	12	0	0	0	1	0	0	1	0	0	14
2007	10	7	1	8	1	6	3	0	18	1	1	46
2007	11	4	2	4	2	7	4	2	11	1	1	38
2007	12	8	1	6	8	7	1	0	12	2	3	48
Total		99	4	49	19	97	15	3	101	7	8	402

Brucellosis: number of reactor animals by month and by DVO 2006

2006	DVO_CODE											
Year	Month	Armagh	Ballymena	Coleraine	Dungannon	Enniskillen	Larne	L'Derry	Newry	Nt'Ards	Omagh	Total
2006	1	22	0	0	0	7	0	0	3	0	0	32
2006	2	9	0	1	0	1	0	0	20	1	0	32
2006	3	9	0	0	0	2	0	0	7	0	0	18
2006	4	23	0	1	0	3	0	0	2	1	0	30
2006	5	1	0	0	0	3	0	0	17	1	1	23
2006	6	14	0	0	0	1	0	0	5	1	1	22
2006	7	27	0	1	0	2	0	0	5	1	1	37
2006	8	11	0	0	0	2	0	0	19	1	0	33
2006	9	1	0	0	15	5	0	0	2	0	0	23
2006	10	5	0	1	10	1	0	0	2	1	2	22
2006	11	3	1	3	0	6	2	0	1	2	1	19
2006	12	2	0	1	0	17	2	0	1	0	0	23
Total		127	1	8	25	50	4	0	84	9	6	314

A Br reactor animal is defined as an animal where the manual interpretation field for a serological test is positive ('P') with the first test date being taken as the time at which the animal became a reactor.

Month = May 2008

Ref.		Total	Armagh	Ballymena	Coleraine	Dungannon	Enniskillen	Larne	L'derry	Newry	Nt'ards	Omagh
b16	No. herds with any test completed in month	6618	592	445	793	716	967	517	232	1022	403	931
b17	No. herds with any test, from start of year	17475	1622	1110	1921	2033	2558	1307	625	2586	1201	2512
b35	All herds with any test, from start of year	19182	1950	1175	2091	2214	2685	1411	695	2960	1344	2657
b18	No. herds with any test, from start of year (no cattle)	1707	328	65	170	181	127	104	70	374	143	145
b19	No. herds with herd test completed in month	1692	214	40	169	167	244	69	37	466	88	198
b20	No. herds with herd test, from start of year	11529	1321	561	1163	1188	1756	824	408	1953	773	1582
b50	All herds with herd test, from start of year	13322	1655	642	1342	1387	1886	936	483	2339	920	1732
b21	No. herds with herd test, from start of year (no cattle)	1793	334	81	179	199	130	112	75	386	147	150
b22	No. herds with herd test during last 12 months	20720	1871	1206	2213	2417	3027	1484	804	3176	1553	2969
b39	No. herds with herd test during last 13-24 months	21077	1903	1247	2219	2484	3052	1518	836	3208	1607	3003
b23	No. herds with herd test during 2007	20232	1822	1186	2198	2342	2933	1444	749	3181	1541	2836
b24	No. herds with herd test during 2006	20658	1899	1216	2189	2456	2969	1459	807	3241	1553	2869
b48	No. herds with herd test during 2005	20852	1862	1240	2178	2444	3047	1514	795	3256	1574	2942
b51	No. herds with herd test during 2004	20152	1968	1163	2051	2269	3127	1435	720	3328	1433	2658
b33	No. herds with herd test during 2003	17477	2001	965	1558	1677	3016	1289	508	3286	1196	1981
b25	No. herds with any risk test completed	6910	1049	374	715	661	1091	533	184	1220	378	705
b26	No. herds with herd risk test completed	3373	796	105	272	206	637	211	45	837	91	173
b27	No. herds with restricted herd test completed	192	49	5	11	9	19	15	3	65	3	13

b28	Number of dairy herds	3615	299	305	553	425	394	320	78	449	308	484
b37	No. dairy herds only tested by bulk milk ELISA since start of year	1713	69	206	320	255	125	172	42	152	148	224
b29	No. dairy herds only tested by bulk milk ELISA	510	4	113	166	94	1	69	14	11	17	21
b40	No. dairy herds only tested by bulk milk ELISA during last 13-24 months	537	4	116	186	95	4	64	18	14	10	26
b38	Total no. herds tested for Br since start of year	13242	1390	767	1483	1443	1881	996	450	2105	921	1806
b30	Total no. herds tested for Br during last 12 months	21230	1875	1319	2379	2511	3028	1553	818	3187	1570	2990
b41	Total no. herds tested for Br during last 13-24 months	21614	1907	1363	2405	2579	3056	1582	854	3222	1617	3029
b31	Total no. herds tested for Br during 2007	20869	1841	1306	2382	2447	2954	1511	770	3202	1570	2886
b32	Total no. herds tested for Br during 2006	21259	1914	1335	2360	2535	2989	1542	827	3258	1576	2923
b49	Total no. herds tested for Br during 2005	21567	1880	1351	2392	2571	3065	1577	820	3279	1622	3010
b43	Total no. herds tested for Br during 2004	20990	1977	1297	2246	2410	3139	1532	755	3343	1530	2761
b34	Total no. herds tested for Br during 2003	18441	2014	1045	1796	1864	3045	1370	545	3310	1304	2148

		Month = May 2008										
Ref		Total	Armagh	Ballymena	Coleraine	Dungannon	Enniskiller	Larne	L'derry	Newry	Nt'ards	Omagh
c1	Total number of tests in current month	8935	807	623	1103	978	1306	713	349	1284	562	1210
c2	Total number of tests from start of year	44558	4310	3185	5105	5127	6666	3713	1548	5826	2874	6204
c3	No. tests during the same time period in the previous year	41383	4261	2990	4795	4771	6103	3603	1178	5063	3121	5498
c4	% change between years	7.1	1.1	6.1	6.1	6.9	8.4	3.0	23.9	13.1	-8.6	11.4
c5	No. tests in the previous 12 months	95313	9553	7126	10991	10779	13772	8237	3171	12271	6303	13110
c6	No. animal tests in current month	77722	9232	3145	8247	7291	11983	4903	2028	15092	6071	9730
c7	No. of animal tests from start of year	648685	81032	36097	69462	55945	85645	57360	23562	98138	56134	85310
c8	No. animal tests during the same time period in the previous year	590072	73717	33666	67938	53218	77581	51937	17196	80839	59408	74572
c9	% change between years	9.0	9.0	6.7	2.2	4.9	9.4	9.5	27.0	17.6	-5.8	12.6
c10	No. animal tests in previous 12 months	1318228	171090	78273	141127	123280	170920	109346	45766	194106	113868	170452
c11	No. cattle eligible for Br testing	909021	75718	63168	123597	100867	101185	76661	36523	111464	93770	126068
c12	No. cattle herds eligible for Br testing	24086	2181	1456	2703	2923	3266	1724	981	3641	1826	3385
c13	No. restricted herd tests during month	45	6	0	2	1	11	3	1	17	0	4
c14	No. animals tested	3467	399	0	221	307	720	267	244	748	0	561
c15	No. herd tests during month	1700	216	40	169	170	245	70	37	467	88	198
c16	No. animals tested	58595	7887	1590	5613	5215	9338	3061	1236	12976	4748	6931
c17	No. individual tests during month	7235	591	583	934	808	1061	643	312	817	474	1012
c18	No. animals tested	19127	1345	1555	2634	2076	2645	1842	792	2116	1323	2799
c19	No. CTA tests during month	333	49	25	76	22	32	26	4	47	27	25
c20	No. animals with CTA test	338	54	34	84	24	42	33	4	55	29	29
c21	No. CTT tests during month	327	47	24	40	36	47	21	18	59	6	29
c22	No. animals with CTT test	468	63	25	57	44	58	47	30	101	7	36
c36	No. animals Br tested since start of year	553436	64753	31824	63115	49640	71234	49899	20302	81714	52662	76524
c23	No. animals Br tested in previous 12 months	930456	93961	62665	113960	96777	115217	86327	36931	127249	98200	134747
c39	No. animals Br tested in previous 13-24 months	943996	94113	63130	115338	103072	115886	87749	36161	127118	104642	135023
c25	No. animals Br tested in 2007	911394	90027	61673	113643	97367	111311	84280	33430	124695	97294	130288

c26	No. animals Br tested in 2006	928500	92643	60862	112747	104149	114386	83121	36609	126674	101775	128566
c61	No. animals Br tested in 2005	911790	83476	60686	108024	100843	116686	85152	35739	121948	95202	129923
c43	No. animals Br tested in 2004	860653	87159	53453	97093	95858	112411	76668	30836	119660	85925	111964
c24	No. animals Br tested in 2003	749981	86650	50657	82874	69128	104554	69845	23369	118038	69743	82225
c37	No. animals BME tested since start of year	147862	6749	16925	30247	18790	7026	15239	4497	11126	18352	18911
c27	No. animals BME tested in previous 12 months	49855	219	10422	16041	8247	20	7145	1956	959	2379	2467
c40	No. animals BME tested in previous 13-24 months	49311	110	9569	17504	8248	124	6109	3071	841	1060	2675
c29	No. animals BME tested in 2007	62135	2096	10732	18669	9194	919	6877	2781	2318	3564	4985
c30	No. animals BME tested in 2006	56682	1169	10405	16977	6539	910	8147	3343	1368	2202	5622
c62	No. animals BME tested in 2005	61779	1434	8633	19522	10361	1174	5415	2838	2090	5510	4802
c44	No. animals BME tested in 2004	69547	1058	10009	16930	9544	1231	8802	4072	954	9622	7325
c28	No. animals BME tested in 2003	66314	775	5196	17726	9967	1027	5459	2883	1443	11431	10407
c31	Total animals currently monitored by BME	303963	28202	25489	49394	29274	20774	28224	8404	37258	37418	39526
c38	Current total animals under Br surveillance since start of year	701298	71502	48749	93362	68430	78260	65138	24799	92840	71014	95435
c32	Current total animals under Br surveillance	980311	94180	73087	130001	105024	115237	93472	38887	128208	100579	137214
c41	Total animals under Br surveillance in last 13-24 mont	993307	94223	72699	132842	111320	116010	93858	39232	127959	105702	137698
c34	Total animals under Br surveillance in 2007	973529	92123	72405	132312	106561	112230	91268	39952	128042	103977	134188
c35	Total animals under Br surveillance in 2006	985182	93812	71267	129724	110688	115296	91268	86464	37977	128876	134188
c63	Total animals under Br surveillance in 2005	973569	84910	69319	127546	111204	117860	90567	38577	124038	100712	134725
c42	Total animals under Br surveillance in 2004	930200	88217	63462	114023	105402	113642	85470	34908	120614	95547	119289
c33	Total animals under Br surveillance in 2003	816295	87425	55853	100600	79095	105581	75304	26252	119481	81174	92632

Month = May 2008

Ref	Total	Armagh	Ballymena	Coleraine	Dungannon	Enniskillen	Larne	L'derry	Newry	Nt'ards	Omagh	
c76	No. premovement tests off-farm in 2008	19990	1135	1790	2588	2598	2951	1745	603	1954	1342	3284
c70	No. premovement tests off-farm in 2007	44457	2468	4236	5574	5456	5959	4558	1395	4663	3020	7128
c64	No. premovement tests off-farm in 2006	43112	2518	4009	5493	5539	5646	4357	1285	4483	3143	6639
c45	No. premovement tests off-farm in 2005	28594	2012	2624	3584	3807	3661	2595	908	3097	1957	4349
c46	No. premovement tests off-farm in 2004	746	44	115	111	83	53	98	17	84	72	69
c77	No. post-movement tests in 2008	505	45	37	42	87	38	33	25	108	28	62
c71	No. post-movement tests in 2007	1136	132	83	133	134	101	82	42	186	84	159
c65	No. post-movement tests in 2006	1185	133	111	136	141	89	86	37	210	73	169
c47	No. post-movement tests in 2005	1569	185	159	170	170	125	118	47	240	145	210
c48	No. post-movement tests in 2004	37	4	5	10	4	4	1	2	2	1	4
c78	No. premovement animal tests off-farm in 2008	72080	4270	6182	9323	8874	10263	6378	2556	6928	5265	12041
c72	No. premovement animal tests off-farm in 2007	170535	10191	15272	21030	20115	21117	17403	6246	17856	12577	28728
c66	No. premovement animal tests off-farm in 2006	168585	10638	14446	21309	21166	19996	17200	6333	16617	13707	27173
c49	No. premovement animal tests off-farm in 2005	121055	8707	9725	15180	15649	14090	10814	5112	12947	9485	19346
c50	No. premovement animal tests off-farm in 2004	2832	129	350	393	353	202	270	95	448	355	237
c79	No. post-movement animal tests in 2008	908	82	70	61	149	98	47	43	191	40	127
c73	No. post-movement animal tests in 2007	2150	269	139	297	221	146	138	106	350	150	334
c67	No. post-movement animal tests in 2006	2181	205	231	278	270	160	129	79	383	124	322
c51	No. post-movement animal tests in 2005	3643	396	388	457	381	205	195	98	606	413	504
c52	No. post-movement animal tests in 2004	133	4	15	50	37	10	2	4	2	2	7
c80	No. reactors detected by movement tests 2008	7	1	0	2	0	0	0	0	0	0	4
c74	No. reactors detected by movement tests 2007	11	1	2	0	2	3	0	0	1	0	2
c68	No. reactors detected by movement tests 2006	8	0	0	2	0	2	0	0	1	2	1
c53	No. reactors detected by movement tests 2005	6	1	0	0	1	2	0	0	0	0	2
c54	No. reactors detected by movement tests 2004	1	0	0	1	0	0	0	0	0	0	0
c81	No. inconclusives detected by movement tests 2008	527	41	43	68	61	65	39	24	58	43	85
c75	No. inconclusives detected by movement tests 2007	1617	183	170	190	191	202	158	55	148	87	233
c69	No. inconclusives detected by movement tests 2006	1323	145	95	130	224	170	122	51	97	89	200
c55	No. inconclusives detected by movement tests 2005	495	68	24	53	76	43	26	31	58	50	66
c56	No. inconclusives detected by movement tests 2004	10	0	1	1	3	0	2	0	0	1	2
c57	Total pre-movement and post-movement tests	141331	8676	13169	17841	18019	18627	13673	4361	15027	9865	22073
c58	Total pre-movement and post-movement animal tests	544102	34891	46818	68378	67215	66287	52576	20672	56328	42118	88819
c59	Total BR reactors detected by movement tests	33	3	2	5	3	7	0	0	2	2	9
c60	Total BR inconclusives detected by movement tests	3972	437	333	442	555	480	347	161	361	270	586

Explanatory Comments for Brucellosis Statistics - B. Testing Herds

B16	No. herds with any test completed in month	Blood Test of any disease status and size (herd or animal-level). Tests with no animals are excluded.
B17	No. herds with any test, from start of year	Blood Test of any disease status and size (herd or animal-level) carried out on a herd since 1st January. Tests with no animals are excluded.
B35	All herds with any test, from start of year	Blood test of any disease status and size (herd or animal-level) carried out on a herd since 1st January. Tests with no animals are included.
B18	No. herds with any test, from start of year (no cattle)	Herd or individual blood test of any disease status (routine, risk or restricted) where no cattle were recorded at all such tests since 1st January
B19	No. herds with herd test completed in month	Herd level blood test of any disease status (routine, risk or restricted) completed during the above month. Tests with no animals are excluded.
B20	No. herds with herd test, from start of year	Herd level blood test of any disease status (routine, risk or restricted) completed since 1st January. Tests with no animals are excluded.
B50	All herds with herd test, from start of year	Herd level blood test of any disease status (routine, risk or restricted) completed since 1st January. Tests with no animals are included.
B21	No. herds with herd test, from start of year (no cattle)	Herd level blood test of any disease status (routine, risk or restricted) where no cattle were recorded at all such herd tests since 1st January.
B22	No. herds with herd test during last 12 months	Herd level blood test of any disease status (routine, risk or restricted) completed in the 12 month period from the above month. Tests with no animals are excluded.
B39	No. herds with herd test during last 13-24 months	Herd level blood test of any disease status (routine, risk or restricted) completed in the 13-24 month period from the above month. Tests with no animals are excluded.
B23	No. herds with herd test during 2007	Herd level blood test of any disease status (routine, risk or restricted) completed in the calendar year 2007. Tests with no animals are excluded.
B24	No. herds with herd test during 2006	Herd level blood test of any disease status (routine, risk or restricted) completed in the calendar year 2006. Tests with no animals are excluded.
B48	No. herds with herd test during 2005	Herd level blood test of any disease status (routine, risk or restricted) completed in the calendar year 2005. Tests with no animals are excluded.
B51	No. herds with herd test during 2004	Herd level blood test of any disease status (routine, risk or restricted) completed in the calendar year 2004. Tests with no animals are excluded.
B33	No. herds with herd test during 2003	Herd level blood test of any disease status (routine, risk or restricted) completed in the calendar year 2003. Tests with no animals are excluded.
B25	No. herds with any risk test completed	Herd has had a herd or individual level risk blood test since start of calendar year and number tested > 0
B26	No. herds with herd risk test completed	Herd has had a herd level risk blood test since start of calendar year and number tested > 0.
B27	No. herds with restricted herd test completed	Herd has had a restricted herd test (RHT) since start of calendar year and number tested > 0.

B28	Number of dairy herds	Number of herds with a Dairy Supplier Number and/or Milk Licence Number recorded on APHIS and currently have dairy cows in the herd.
B37	No. dairy herds only tested by bulk milk ELISA since start of year	No. dairy herds where no herd blood test was recorded since the start of the calendar year i.e. tested only by bulk milk ELISA (BME).
B29	No. dairy herds only tested by bulk milk ELISA	No. dairy herds where no herd blood test was recorded during the last 12 month period i.e. tested only by bulk milk ELISA (BME).
B40	No. dairy herds only tested by bulk milk ELISA during last 13-24 months	No. dairy herds where no herd blood test was recorded during the last 13-24 month period i.e. tested only by bulk milk ELISA (BME).
B38	Total no. herds tested for Br since start of year	No. herds tested by serology or bulk milk ELISA completed since the start of the calendar year. Tests with no animals are excluded. Currently it is assumed that all dairy herds are subjected to BME testing.
B30	Total no. herds tested for Br during last 12 months	No. herds tested by serology or bulk milk ELISA completed in the 12 month period from the above month. Tests with no animals are excluded. Currently it is assumed that all dairy herds are subjected to BME testing.
B41	Total no. herds tested for Br during last 13-24 months	No. herds tested by serology or bulk milk ELISA completed in the 13-24 month period from the above month. Tests with no animals are excluded. Currently it is assumed that all dairy herds are subjected to BME testing.
B31	Total no. herds tested for Br during 2007	No. herds tested by serology or bulk milk ELISA completed during 2007. Tests with no animals are excluded. Currently it is assumed that all dairy herds are subjected to BME testing.
B32	Total no. herds tested for Br during 2006	No. herds tested by serology or bulk milk ELISA completed during 2006. Tests with no animals are excluded. Currently it is assumed that all dairy herds are subjected to BME testing.
B49	Total no. herds tested for Br during 2005	No. herds tested by serology or bulk milk ELISA completed during 2005. Tests with no animals are excluded. Currently it is assumed that all dairy herds are subjected to BME testing. 2005 figures also assume that the number of dairy farms are the same as were present on APHIS in February 2004.
B43	Total no. herds tested for Br during 2004	No. herds tested by serology or bulk milk ELISA completed during 2004. Tests with no animals are excluded. Currently it is assumed that all dairy herds are subjected to BME testing. 2004 figures also assume that the number of dairy farms are the same as were present on APHIS in February 2003.
B34	Total no. herds tested for Br during 2003	No. herds tested by serology or bulk milk ELISA completed during 2003. Tests with no animals are excluded. Currently it is assumed that all dairy herds are subjected to BME testing. 2003 figures also assume that the number of dairy farms are the same as were present on APHIS in February 2002.

Explanatory Comments for Brucellosis Statistics - C. Testing Animals

C1	Total number of tests in current month	Number of herds and individual blood tests performed in the month stated above. Tests with no animals are excluded
C2	Total number of tests from start of year	From 1st January. Only includes blood sample tests. Tests with no animals are excluded.
C3	No. tests during the same time period in the previous year	From 1st January of previous year. Only includes blood sample tests. Tests with no animals are excluded.
C4	% change between years	Difference between the number of blood tests carried out during the current year and the number carried out in the previous expressed as a percentage.
C5	No. tests in the previous 12 months	Last 12 month period from the above month. Only includes blood sample tests. Tests with no animals are excluded.
C6	No. animal tests in current month	Animal test = a count of the number of animals blood tested within each herd or individual test. Some animals may have been blood tested multiple times during the year.
C7	No. animal tests from start of year	Number of animal tests carried out since 1st January. Only includes Blood Sample Tests
C8	No. animal tests during the same time period in the previous year	Number of animal blood tests carried out from 1st January in the previous year over the same time interval as recorded for the current year.
C9	% change between years	Difference between the number of animal blood tests during the current year and the number carried out in the previous expressed as a percentage.
C10	No. animal tests in previous 12 months	Last 12 month period from the above month. Only includes blood sample tests.
C11	No. cattle eligible for BR testing	Based on the average number of animals presented at Br herd blood tests over last 4 years. Herds which have only been tested by BME are excluded.
C12	No. cattle herds eligible for BR testing	Based on cattle being presented for a BR herd blood tests over last 4 years. Herds with '0' cattle are excluded. Herds which have only been tested by BME are also excluded.
C13	No. restricted herd tests during month	All restricted herd tests (RHT, STC, VTC) sampled during the above month.
C14	No. animals tested	Total of the animals reported as being tested within restricted herd tests (RHT, STC, VTC) during the above month.
C15	No. herd tests during month	Total of number of herd blood tests sampled during the above month.
C16	No. animals tested	Total of the animals reported as being blood tested within all herd tests during the above month.
C17	No. individual tests during month	Total number individual tests sampled during the above month.
C18	No. animals tested	Total of the animals reported as being blood tested within all individual tests during the above month.
c19	No. CTA tests during month	Total number of check test abortions (CTAs) tests sampled during the above month.
c20	No. animals with CTA test	Total of the animals reported as being tested within all CTA tests during the above month.
c21	No. CTT tests during month	Total number of check test tracing (CTTs) tests sampled during the above month.
c22	No. animals with CTT test	Total of the animals reported as being tested within all CTT tests during the above month.
c36	No. animals Br tested since start of year	Animals identified as having had at least one Br blood test since the start of the calendar year. Due to the same animals being sampled in different DVO areas, the 'Total' is not the sum of the DVO figures.
c23	No. animals BR tested in previous 12 months	Animals identified as having had at least one BR blood test during the last 12 month period from the above month. Due to the same animals being sampled in different DVO areas, the 'Total' is not the sum of the DVO figures.
c39	No. animals BR tested in previous 13-24 months	Animals identified as having had at least one BR blood test during the last 13-24 month period from the above month. Due to the same animals being sampled in different DVO areas, the 'Total' is not the sum of the DVO figures.
c25	No. animals BR tested in 2007	Animals identified as having had at least one Br blood test during the 2007 calendar year. Due to the same animals being sampled in different DVO areas, the 'Total' is not the sum of the DVO figures.
c26	No. animals BR tested in 2006	Animals identified as having had at least one Br blood test during the 2006 calendar year. Due to the same animals being sampled in different DVO areas, the 'Total' is not the sum of the DVO figures.
c61	No. animals BR tested in 2005	Animals identified as having had at least one Br blood test during the 2005 calendar year. Due to the same animals being sampled in different DVO areas, the 'Total' is not the sum of the DVO figures.
c43	No. animals BR tested in 2004	Animals identified as having had at least one Br blood test during the 2004 calendar year. Due to the same animals being sampled in different DVO areas, the 'Total' is not the sum of the DVO figures.
c24	No. animals BR tested in 2003	Animals identified as having had at least one Br blood test during the 2003 calendar year. Due to the same animals being sampled in different DVO areas, the 'Total' is not the sum of the DVO figures.
c37	No. animals BME tested since start of year	Estimated number of animals tested within dairy herds which were subjected to only bulk milk ELISA (BME) surveillance for BR i.e. not blood sampled since the start of year. Animal count based on >2yr old female cattle of a dairy breed within each dairy herd.

c27	No. animals BME tested in previous 12 months	Estimated number of animals tested within dairy herds which were subjected to only bulk milk ELISA (BME) surveillance for BR i.e. not blood sampled during the last 12 months. Animal count based on >2yr old female cattle of a dairy breed.
c40	No. animals BME tested in previous 13-24 months	Estimated number of animals tested within dairy herds which were subjected to only bulk milk ELISA (BME) surveillance for BR i.e. not blood sampled during the last 13-24 months. Animal count based on >2yr old female cattle of a dairy breed.
c29	No. animals BME tested in 2007	Estimated number of animals tested within dairy herds which were subjected only to bulk milk ELISA (BME) surveillance for BR i.e. not blood sampled during 2007. Animal count based on >2yr old female cattle of a dairy breed
c30	No. animals BME tested in 2006	Estimated number of animals tested within dairy herds which were only subjected to bulk milk ELISA (BME) surveillance for BR i.e. not blood sampled during 2006. Animal count based on >2yr old female cattle of a dairy breed within each dairy herd
C62	No. animals BME tested in 2005	Estimated number of animals tested within dairy herds which were subjected only to bulk milk ELISA (BME) surveillance for BR i.e. not blood sampled during 2005. Animal count based on >2yr old female cattle of a dairy breed within each dairy herd.
C44	No. animals BME tested in 2004	Estimated number of animals tested within dairy herds which were subjected only to bulk milk ELISA (BME) surveillance for BR i.e. not blood sampled during 2004. Animal count based on >2yr old female cattle of a dairy breed within each dairy herd as of 12th February 2004.
c28	No. animals BME tested in 2003	Estimated number of animals tested within dairy herds which were subjected only to bulk milk ELISA (BME) surveillance for BR i.e. not blood sampled during 2003. Animal count based on >2yr old female cattle of a dairy breed within each dairy herd
c31	Total animals currently monitored by BME	Estimated number of animals tested within dairy herds which were subjected to bulk milk ELISA (BME) surveillance for BR. Animal count based on >2yr old female cattle of a dairy breed.
c38	Current total animals under Br surveillance since start of year	Total number of animals in herds tested by serology or bulk milk ELISA completed since the start of the calendar year. Tests with no animals are excluded. Currently it is assumed that all dairy herds are subjected to BME testing.
c32	Current total animals under Br surveillance	Total number of animals in herds tested by serology or bulk milk ELISA completed in the 12 month period from the above month. Tests with no animals are excluded. Currently it is assumed that all dairy herds are subjected to BME testing.
c41	Total animals under Br surveillance in last 13-24 months	Total number of animals in herds tested by serology or bulk milk ELISA completed in the 13-24 month period from the above month. Tests with no animals are excluded. Currently it is assumed that all dairy herds are subjected to BME testing.
c34	Total animals under Br surveillance in 2007	Total number of animals in herds tested by serology or bulk milk ELISA completed during 2007. Currently it is assumed that all dairy herds are subjected to BME testing.
c35	Total animals under Br surveillance in 2006	Total number of animals in herds tested by serology or bulk milk ELISA completed during 2006. Currently it is assumed that all dairy herds are subjected to BME testing.
C63	Total animals under Br surveillance in 2005	Total number of animals in herds tested by serology or bulk milk ELISA completed during 2005. Currently it is assumed that all dairy herds are subjected to BME testing
C42	Total animals under Br surveillance in 2004	Total number of animals in herds tested by serology or bulk milk ELISA completed during 2004. Currently it is assumed that all dairy herds are subjected to BME testing.
C33	Total animals under Br surveillance in 2003	Total number of animals in herds tested by serology or bulk milk ELISA completed during 2003. Currently it is assumed that all dairy herds are subjected to BME testing. Animal numbers for 40 herds currently not included. 2003 figures also assume that the number of dairy farms are the same as were present on APHIS in February 2004.

1

Explanatory Comments for Brucellosis Statistics - C1. Premovement Testing

c76	No. premovement tests off-farm in 2008	Number of premovement tests carried out before animal movement occurred (MTO) during the current year.
c70	No. premovement tests off-farm in 2007	Number of premovement tests carried out before animal movement occurred (MTO) during 2007. The requirement for premovement testing was introduced on 1st December 2004.
c64	No. premovement tests off-farm in 2006	Number of premovement tests carried out before animal movement occurred (MTO) during 2006. The requirement for premovement testing was introduced on 1st December 2004.
c45	No. premovement tests off-farm in 2005	Number of premovement tests carried out before animal movement occurred (MTO) during 2005. The requirement for premovement testing was introduced on 1st December 2004.
c46	No. premovement tests off-farm in 2004	Number of premovement tests carried out before animal movement occurred (MTO) during 2004. The requirement for premovement testing was introduced on 1st December 2004.
c77	No. post-movement tests in 2008	Number of movement tests carried out after animal movement occurred (MTI) during the current year.
c71	No. post-movement tests in 2007	Number of movement tests carried out after animal movement occurred (MTI) during 2007. The requirement for premovement testing was introduced on 1st December 2004.
c65	No. post-movement tests in 2006	Number of movement tests carried out after animal movement occurred (MTI) during 2006. The requirement for premovement testing was introduced on 1st December 2004.
c47	No. post-movement tests in 2005	Number of movement tests carried out after animal movement occurred (MTI) during 2005. The requirement for premovement testing was introduced on 1st December 2004.
c48	No. post-movement tests in 2004	Number of movement tests carried out after animal movement occurred (MTI) during 2004. The requirement for premovement testing was introduced on 1st December 2004.
c78	No. premovement animal tests off-farm in 2008	Number of premovement animal tests carried out before animal movement occurred (MTO) during the current year.
c72	No. premovement animal tests off-farm in 2007	Number of premovement animal tests carried out before animal movement occurred (MTO) during 2007.
c66	No. premovement animal tests off-farm in 2006	Number of premovement animal tests carried out before animal movement occurred (MTO) during 2006.
c49	No. premovement animal tests off-farm in 2005	Number of premovement animal tests carried out before animal movement occurred (MTO) during 2005.
c50	No. premovement animal tests off-farm in 2004	Number of premovement animal tests carried out before animal movement occurred (MTO) during 2004.
c73	No. post-movement animal tests in 2008	Number of movement animal tests carried out after animal movement occurred (MTI) during the current year.
c73	No. post-movement animal tests in 2007	Number of movement animal tests carried out after animal movement occurred (MTI) during 2007.
c67	No. post-movement animal tests in 2006	Number of movement animal tests carried out after animal movement occurred (MTI) during 2006.
c51	No. post-movement animal tests in 2005	Number of movement animal tests carried out after animal movement occurred (MTI) during 2005.
c52	No. post-movement animal tests in 2004	Number of movement animal tests carried out after animal movement occurred (MTI) during 2004.
c80	No. reactors detected by premovement tests 2008.	Number of BR serological reactors detected by premovement and post-movement testing during current year.
c74	No. reactors detected by premovement tests 2007.	Number of BR serological reactors detected by premovement and post-movement testing during 2007.
c68	No. reactors detected by premovement tests 2006	Number of BR serological reactors detected by premovement and post-movement testing during 2006.
c53	No. reactors detected by premovement tests 2005	Number of BR serological reactors detected by premovement and post-movement testing during 2005.
c54	No. reactors detected by premovement tests 2004	Number of BR serological reactors detected by premovement and post-movement testing during 2004.
c81	No. inconclusives detected by premovement tests 2008	Number of BR serological inconclusive reactors detected by premovement and post-movement testing during the current year.
c75	No. inconclusives detected by premovement tests 2007	Number of BR serological inconclusive reactors detected by premovement and post-movement testing during 2007.
c69	No. inconclusives detected by premovement tests 2006	Number of BR serological inconclusive reactors detected by premovement and post-movement testing during 2006.
c55	No. inconclusives detected by premovement tests 2005	Number of BR serological inconclusive reactors detected by premovement and post-movement testing during 2005.
c56	No. inconclusives detected by premovement tests 2004	Number of BR serological inconclusive reactors detected by premovement and post-movement testing during 2004.
c57	Total pre-movement and post-movement tests	Total number of pre-movement and post-movement tests carried out since 1st December 2004.
c58	Total pre-movement and post-movement animal tests	Total number of pre-movement and post-movement animal tests carried out since 1st December 2004.

- c59 Total BR reactors detected by movement tests** Total number of BR serological reactors detected by pre-movement and post-movement tests carried out since 1st December 2004.
- c60 Total BR inconclusives detected by movement tests** Total number of BR serological inconclusive reactors detected by pre-movement and post-movement tests carried out since 1st December 2004.

Explanatory Comments for Brucellosis Statistics - D. Results

D1	No. of herds with BR reactors during month	A herd is included in this figure if the herd number had a BR Blood test reactor during the above month.
D2	No. of new reactor herds during month	A herd is defined as being a Br reactor herd if it had at least one Br reactor animal in that month and no Br reactor animals during the previous 12 months.
D3	No. of new reactor herds since start of year	= Since 1st January
D4	No. of new reactor herds in the previous 12 months	Last 12 month period from the above month.
D26	No. of new reactor herds in previous 13-24 months	Last 13-24 month period from the above month.
D5	No. of BR reactor animals during month	A Br reactor animal is defined as an animal where the manual interpretation field for a blood test is positive ('P') with the first test date being taken as the time at which the animal became a reactor.
D6	No. of BR reactor animals since start of year	= Since 1st January
D7	No. of reactor animals in the previous 12 months	Last 12 month period from the above month.
D27	No. of reactor animals in previous 13-24 months	Last 13-24 month period from the above month.
D8	Herd Prevalence (%)	Number of herds with a Br serological reactor during the above month as a proportion of cattle herds which have presented cattle for a Br herd test during the same time period.
D20	Cumulative herd incidence during 2006 (%)	Number of NEW reactor herds since the start of the calendar year as a proportion of cattle herds which have presented cattle for a Br herd test during the same time period.
D9	Annual herd incidence over the last 12 months (%)	Number of NEW reactor herds during the last 12 months as a proportion of cattle herds which have presented cattle for a Br herd test during the same time period.
D28	Annual herd incidence over the last 13-24 months (%)	Number of NEW reactor herds during the last 13-24 months as a proportion of cattle herds which have presented cattle for a Br herd test during the same time period.
D10	2007 Herd Incidence (%)	Number of NEW reactor herds during 2007 as proportion of cattle herds which have presented cattle for a Br herd test during the same time period.
D11	2006 Herd Incidence (%)	Number of NEW reactor herds during 2006 as proportion of cattle herds which have presented cattle for a Br herd test during the same time period.
D44	2005 Incidence(%)	Number of NEW reactor herds during 2005 as proportion of cattle herds which have presented cattle for a Br herd test during the same time period.
D29	2004 Incidence(%)	Number of NEW reactor herds during 2004 as proportion of cattle herds which have presented cattle for a Br herd test during the same time period.
D15	2003 Herd Incidence (%)	Number of NEW reactor herds during 2003 as proportion of cattle herds which have presented cattle for a Br herd test during the same time period.
D21	Cumulative animal incidence during 2006 (%)	Number of BR reactor animals since the start of the calendar year divided by the number of cattle tested for Br within the same time period
D12	Annual animal incidence over the last 12 months (%)	Number of Br reactor animals over the last 12 months divided by the number of cattle tested for Br within the same time period.
D30	Annual animal incidence over the last 13-24 months (%)	Number of Br reactor animals over the last 13-24 months divided by the number of cattle tested for Br within the same time period.
D13	2007 Animal Incidence (%)	Number of Br reactor animals during 2007 divided by the number of cattle tested for Br within the same time period.
D14	2006 Animal Incidence (%)	Number of Br reactor animals during 2006 divided by the number of cattle tested for Br within the same time period.
D45	2005 Animal Incidence (%)	Number of Br reactor animals during 2005 divided by the number of cattle tested for Br within the same time period.
D31	2004 Animal Incidence (%)	Number of Br reactor animals during 2004 divided by the number of cattle tested for Br within the same time period.
D16	2003 Animal Incidence (%)	Number of Br reactor animals during 2003 divided by the number of cattle tested for Br within the same time period.

d33	APT during current month	= The reactor disclosure rate per 1,000 animal blood tests during current month.
D22	APT since start of 2005	The reactor disclosure rate per 1,000 animal blood tests since the start of the calendar year.
D17	Current 12 month moving average APT	The reactor disclosure rate per 1,000 animal blood tests. Current refers to the rate over the last 12 months.
D19	2007 APT	The reactor disclosure rate per 1,000 animal blood tests during the calendar year.
D51	2006 APT	The reactor disclosure rate per 1,000 animal blood tests during the calendar year.
D46	2005 APT	The reactor disclosure rate per 1,000 animal blood tests during the calendar year.
d32	2004 APT	The reactor disclosure rate per 1,000 animal blood tests during the calendar year.
D18	2003 APT	The reactor disclosure rate per 1,000 animal blood tests during the calendar year.
D23	No. negative in contacts since start of year	Number of animals taken as negative in contacts since the start of the year
D25	No. negative in contacts during 2007	Number of animals taken as negative in contacts during 2007
D52	No. negative in contacts during 2006	Number of animals taken as negative in contacts during 2006
D47	No. negative in contacts during 2005	Number of animals taken as negative in contacts during 2005
D34	No. negative in contacts during 2004	Number of animals taken as negative in contacts during 2004
D24	No. negative in contacts during 2003	Number of animals taken as negative in contacts during 2003
D37	Reactor removal time 2008	Figures given are median values for working days estimated from calendar days (calendar days multiplied by 0.685). Reactors which are not yet slaughtered or where they they were first declared as reactors at slaughter are excluded.
D50	Reactor removal time 2006	Figures given are median values for working days estimated from calendar days (calendar days multiplied by 0.685). Reactors which are not yet slaughtered or where they they were first declared as reactors at slaughter are excluded.
D35	Reactor removal time 2005	Figures given are median values for working days estimated from calendar days (calendar days multiplied by 0.685). Reactors which are not yet slaughtered or where they they were first declared as reactors at slaughter are excluded.
D36	Reactor removal time 2004	Figures given are median values for working days estimated from calendar days (calendar days multiplied by 0.685). Reactors which are not yet slaughtered or where they they were first declared as reactors at slaughter are excluded.
D38	Herds with infection confirmed 2008	Herds where samples have been subjected to culture for <i>Brucella abortus</i> and where the infection was confirmed.
D39	Herds with infection not confirmed 2008	Herds where samples have been subjected to culture for <i>Brucella abortus</i> and where the infection was NOT confirmed within the same calendar year.
D40	% Herds with infection confirmed this year	Percentage of herds where samples have been subjected to culture for <i>Brucella abortus</i> which were found to be positive for infection divided by the total number of herds where samples have been subjected to culture for <i>Brucella abortus</i> .
D56	% Herds with infection confirmed 2007	Percentage of herds where samples have been subjected to culture for <i>Brucella abortus</i> which were found to be positive for infection divided by the total number of herds where samples have been subjected to culture for <i>Brucella abortus</i> in 2007
D53	% Herds with infection confirmed 2006	Percentage of herds where samples have been subjected to culture for <i>Brucella abortus</i> which were found to be positive for infection divided by the total number of herds where samples have been subjected to culture for <i>Brucella abortus</i> in 2006
D48	% Herds with infection confirmed 2005	Percentage of herds where samples have been subjected to culture for <i>Brucella abortus</i> which were found to be positive for infection divided by the total number of herds where samples have been subjected to culture for <i>Brucella abortus</i> in 2005
D41	Reactor animals with infection confirmed 2008	Animals where samples have been subjected to culture for <i>Brucella abortus</i> and where the infection was confirmed.
D42	Reactor animals with infection not confirmed 2008	Animals where samples have been subjected to culture for <i>Brucella abortus</i> and where the infection was NOT confirmed.
D43	% Reactor animals with infection confirmed 2008	Percentage of animals where samples have been subjected to culture for <i>Brucella abortus</i> which were found to be positive for infection divided by the total number of animals where samples have been subjected to culture for <i>Brucella abortus</i> .

D57	% Reactor animals with infection confirmed in 2007	Percentage of reactor animals where samples have been subjected to culture for <i>Brucella abortus</i> which were found to be positive for infection divided by the total number of animals where samples have been subjected to culture for <i>Brucella abortus</i> in 2007
D54	% Reactor animals with infection confirmed in 2006	Percentage of reactor animals where samples have been subjected to culture for <i>Brucella abortus</i> which were found to be positive for infection divided by the total number of animals where samples have been subjected to culture for <i>Brucella abortus</i> in 2006
D49	% Reactor animals with infection confirmed in 2005	Percentage of reactor animals where samples have been subjected to culture for <i>Brucella abortus</i> which were found to be positive for infection divided by the total number of animals where samples have been subjected to culture for <i>Brucella abortus</i> in 2005
D58	No. of new BR herd breakdowns during current year which were confirmed by bacteriological culture	The number of new BR herd breakdowns during the current year where <i>Brucella abortus</i> was cultured. To February 2008
d66	No. of new BR herd breakdowns during last 12 months which were confirmed by bacteriological culture	The number of new BR herd breakdowns during the last 12 months where <i>Brucella abortus</i> was cultured.
D59	No. of new BR herd breakdowns during 2007 confirmed by bacteriological culture	The number of new BR herd breakdowns during 2007 where <i>Brucella abortus</i> was cultured
D60	No. of new BR herd breakdowns during 2006 confirmed by bacteriological culture	The number of new BR herd breakdowns during 2006 where <i>Brucella abortus</i> was cultured
D61	No. of new BR herd breakdowns during 2005 confirmed by bacteriological culture	The number of new BR herd breakdowns during 2005 where <i>Brucella abortus</i> was cultured
d62	Cumulative culture confirmed herd incidence for 2008 (%)	The number of new BR herd breakdowns during the current year where <i>Brucella abortus</i> was cultured divided by the number of herds with cattle that were tested for brucellosis during the same time period expressed as a percentage