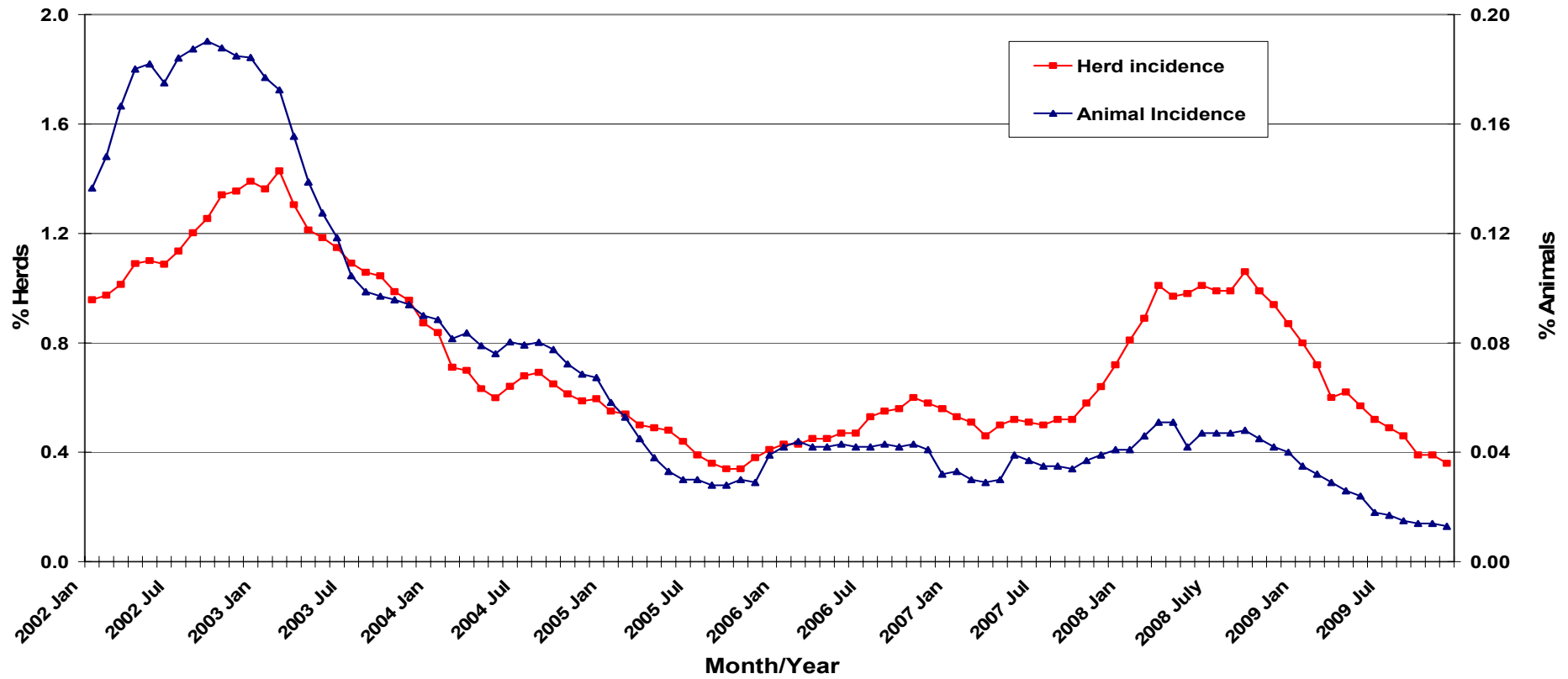


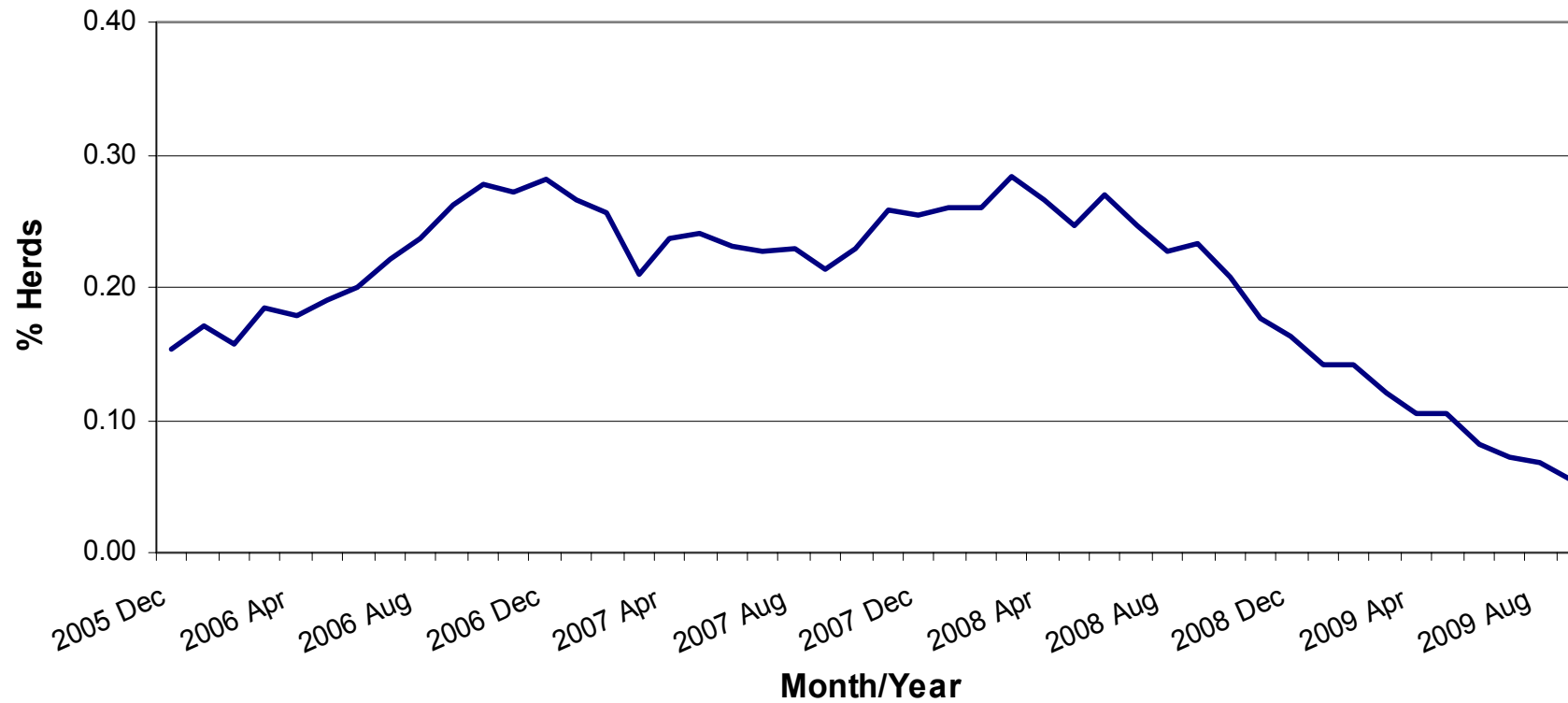
Brucellosis: Statistics for November 2009

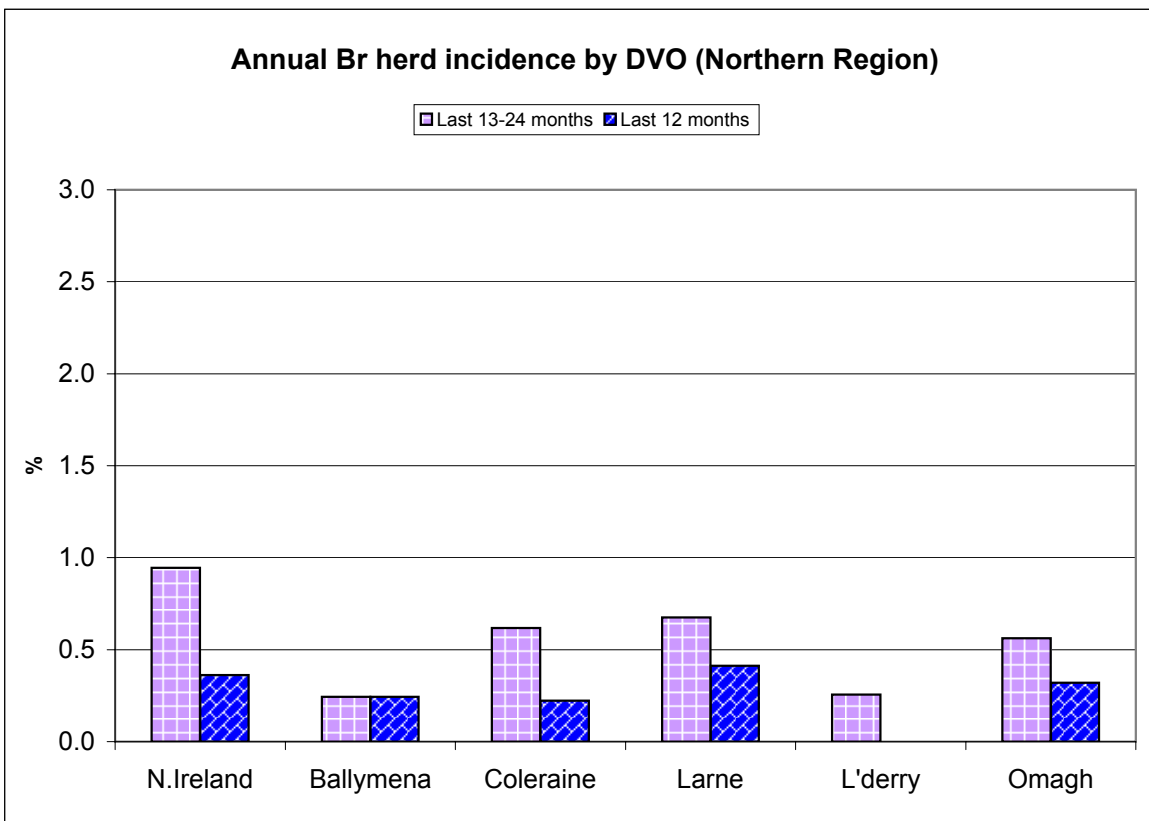
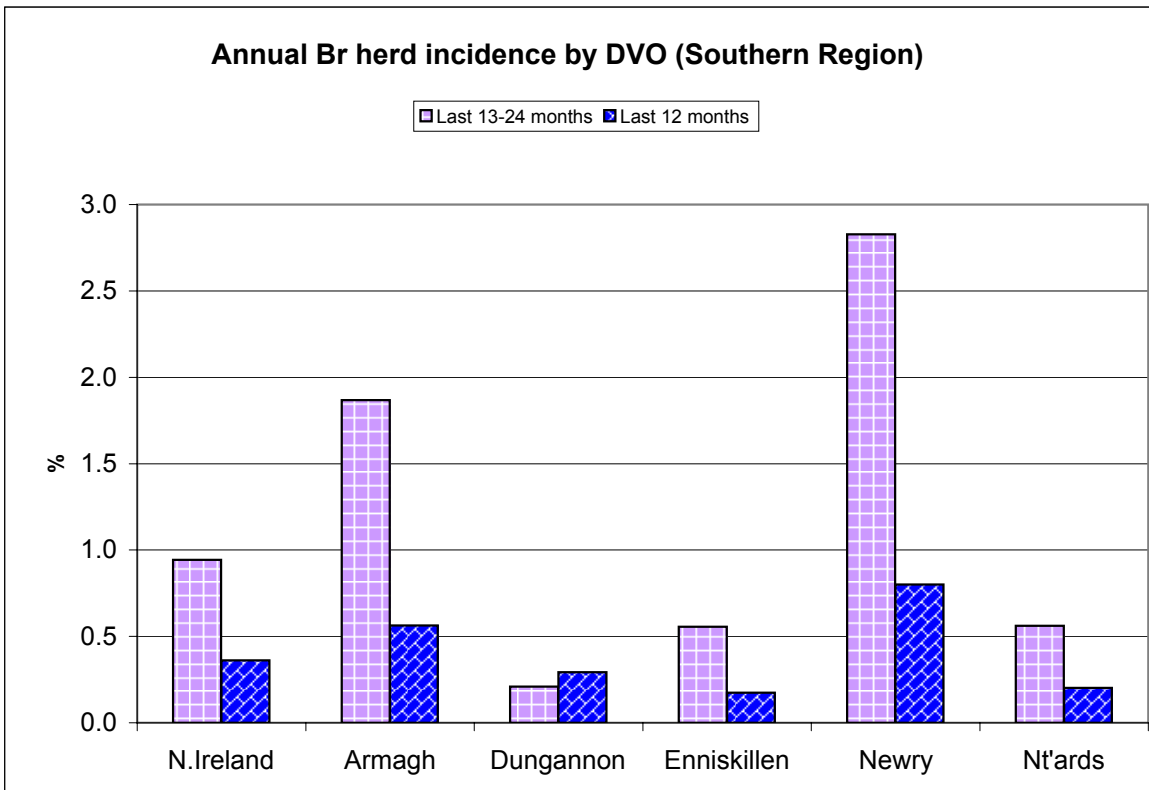
Tests Completed	Herds	Number of herds tested (any test), by DVO	Cumulative Statistics	
		Number of herds with herd-level test, by DVO	Cumulative Statistics	
		Number of herds with any risk test, by DVO		
		Number of herds with herd-level risk test, by DVO		
		Number of herds with herd-level restricted test, by DVO		
		Number of herds monitored by BME or blood sampling	Number of herds monitored by BME alone	
	Animals	Total number of tests performed, by DVO	Cumulative Statistics	Premovement testing
		Total number of animals tests, by DVO	Cumulative Statistics	
		Total number of restricted herd tests, by DVO	Number of animals tested	
		Total number of herd tests, by DVO	Number of animals tested	
		Total number of individual tests, by DVO	Number of animals tested	
		Total number of CTA tests, by DVO	Number of animals tested	
		Total number of CTT tests, by DVO	Number of animals tested	
		Total number of animals tested, by DVO		
	Current total animals under Br surveillance	Number of animals tested by BME alone		
Summary Statistics	Herds with Br reactors during month, by DVO	Cumulative Statistics	APT	
	Number of new reactor herds, by DVO	Cumulative Statistics	Negative-in-contacts	
	Number of new reactor animals, by DVO		Reactor removal times	
	Herd Prevalance		Confirmed infection	
	Herd Incidence			
	Animal Incidence			
	Number of reactor animals by month and by DVO			
	Number of new reactor herds by month and by DVO			
	Total number of all reactor herds in 2003, by DVO			
Summary Charts	Current Animal Incidence Charts	Monthly BR reactors chart		
	Yearly Animal Incidence Charts	BR new herd breakdowns chart		
	Current Herd Incidence Charts	BR herd & animal incidence		
	Yearly Herd Incidence Charts			

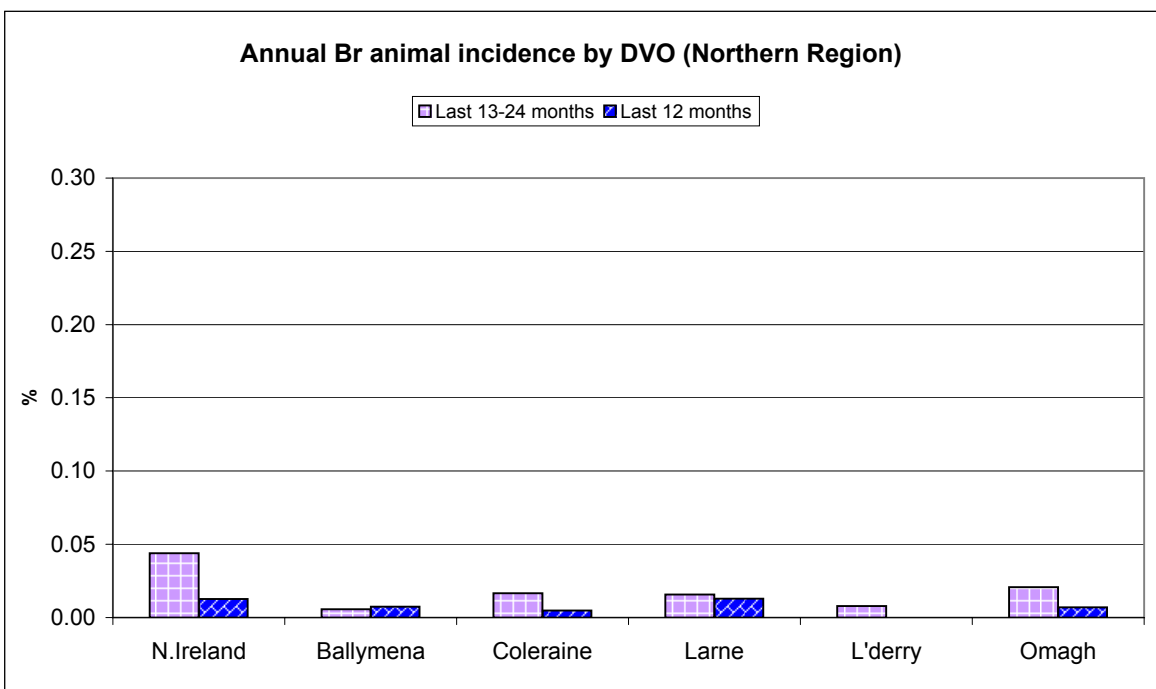
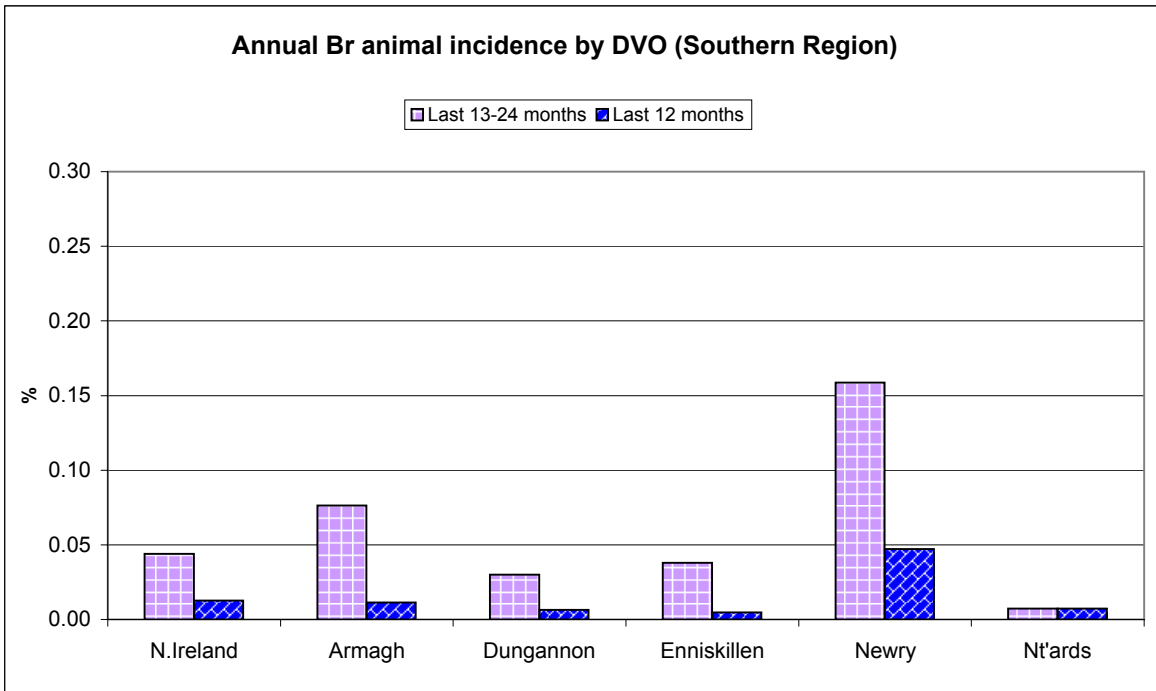
BR Herd and Animal Incidence (12 month moving average: January 2002 to November 2009)



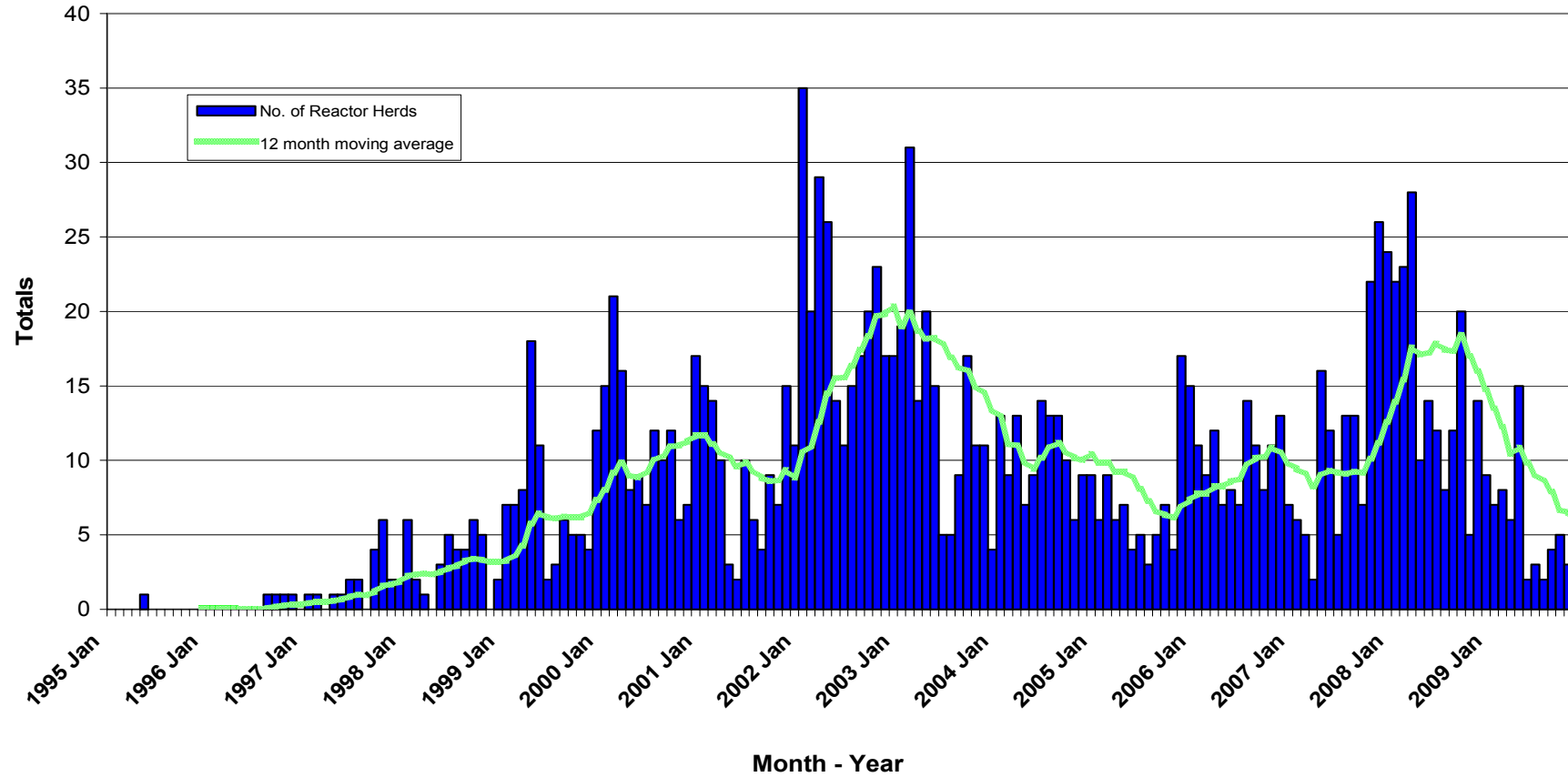
BR annual herd incidence where infection confirmed by culture: December 2005 to September 2009



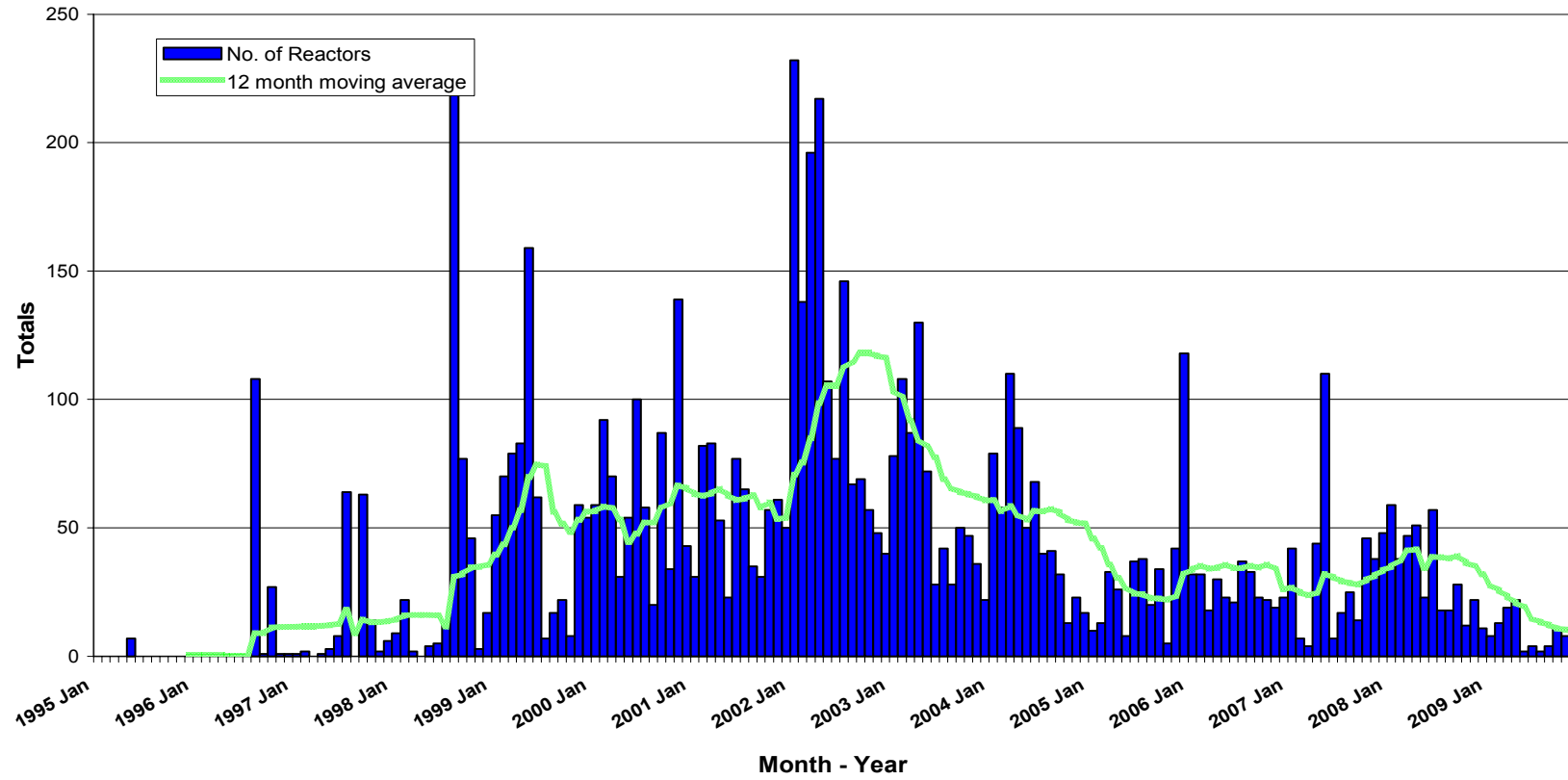


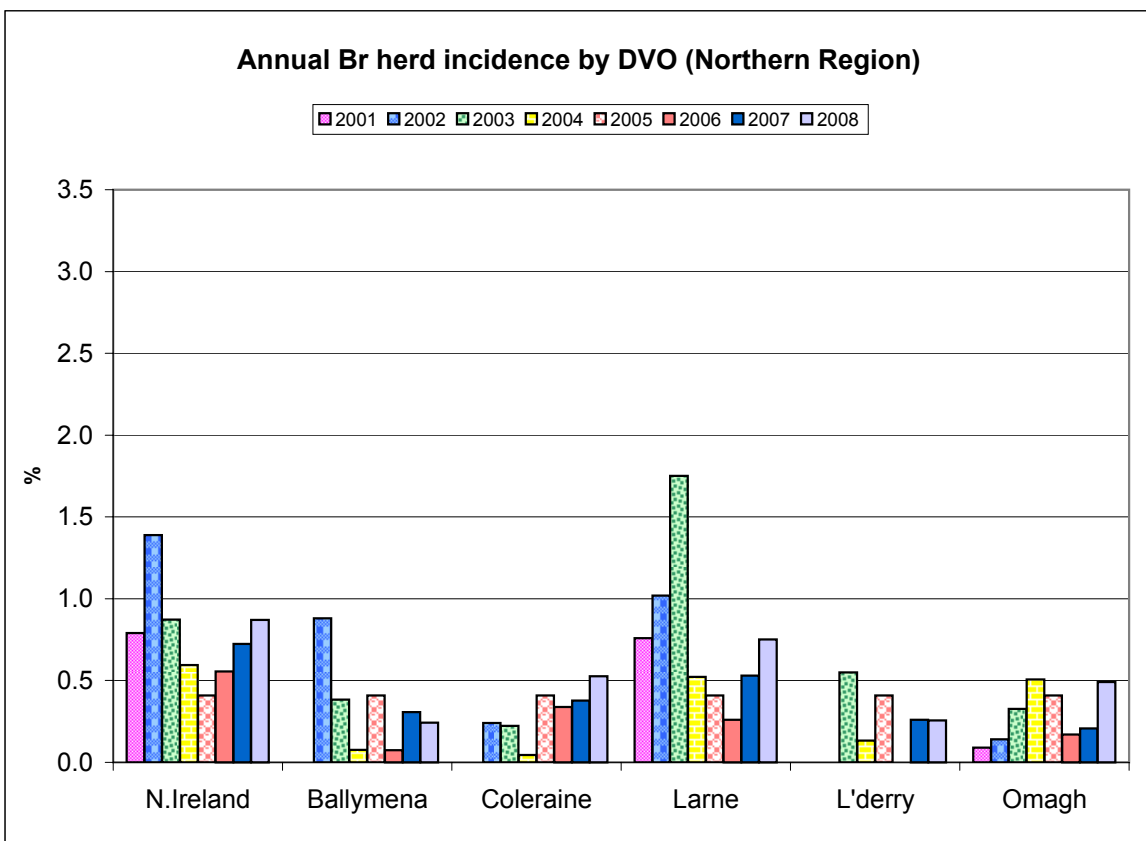
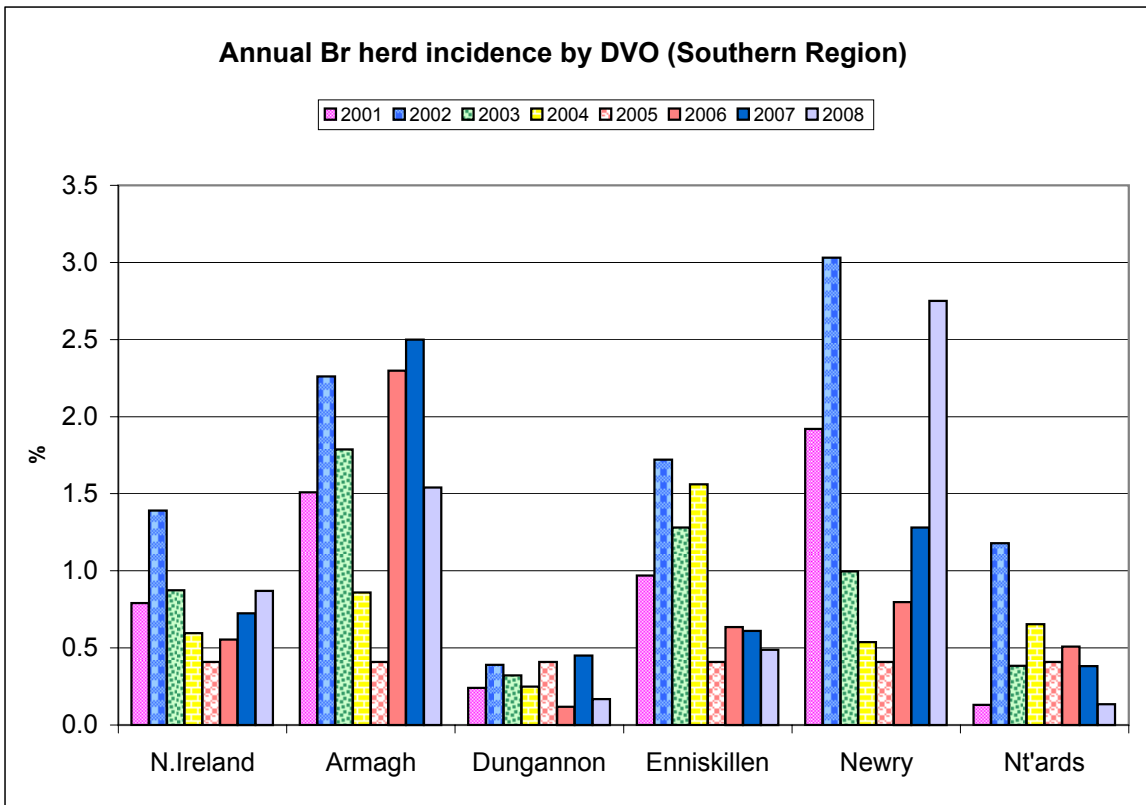


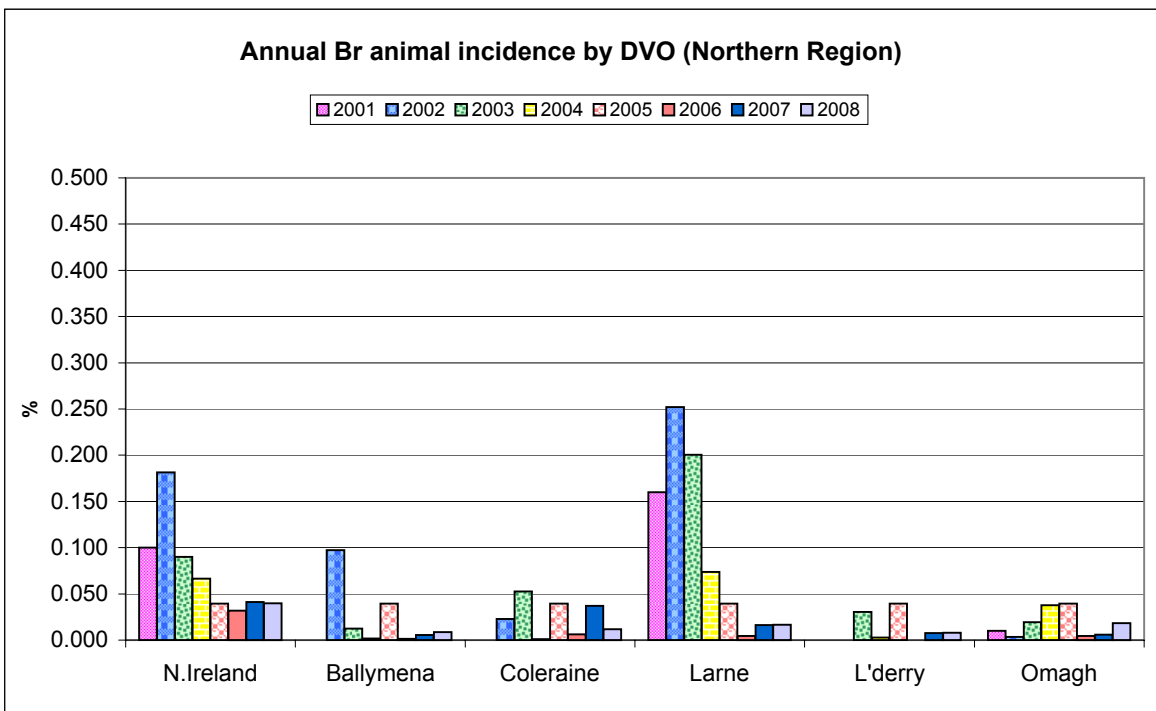
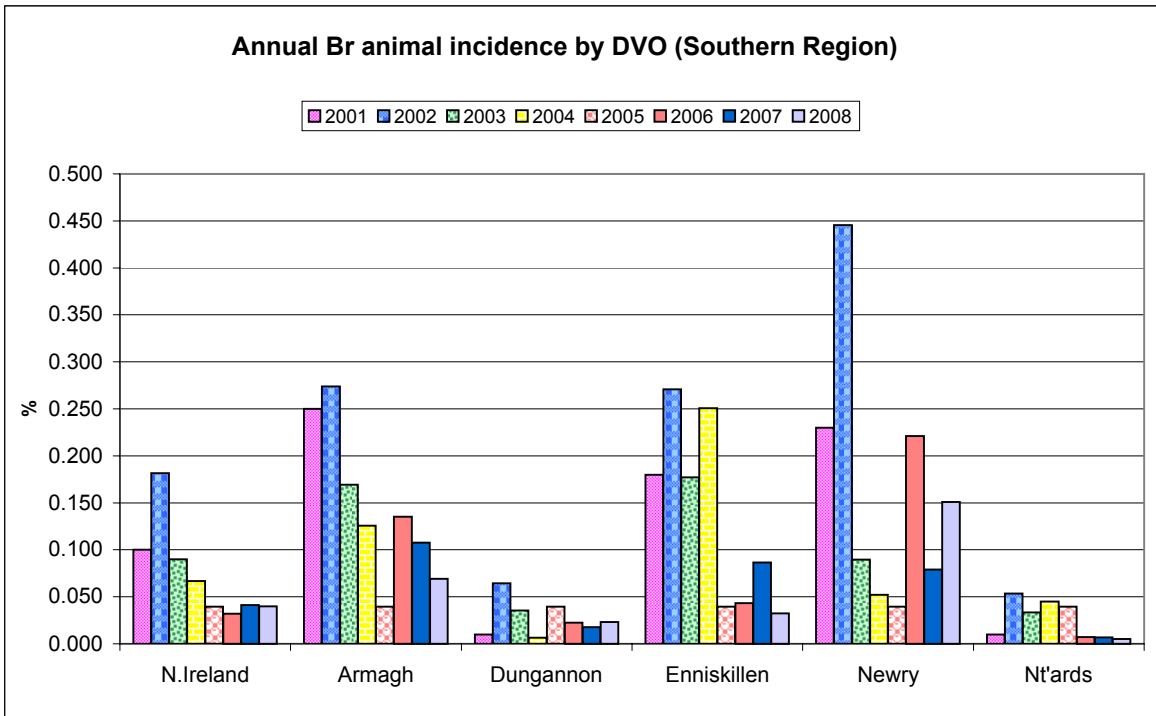
New BR Reactor Herds: January 1995 to November 2009



BR Reactors: January 1995 to November 2009







Month = November 2009

Ref.	Total	Armagh	Ballymena	Coleraine	Dungannon	Enniskillen	Larne	L'derry	Newry	Nt'ards	Omagh	
d1	No. of herds with Br reactors during month	9	3	1	0	0	2	1	0	1	0	1
d2	No. of new reactor herds during month	9	3	1	0	0	2	1	0	1	0	1
d3	No. of new reactor herds since start of year	64	9	2	5	6	4	4	0	22	3	9
d4	No. of new reactor herds in the previous 12 months	73	10	3	5	7	5	6	0	25	3	9
d26	No. of new reactor herds in previous 13-24 months	192	34	3	14	5	16	10	2	89	3	16
d5	No. of Br reactor animals during month	14	3	1	0	0	2	6	0	1	0	1
d6	No. of Br reactor animals since start of year	107	9	2	6	6	4	9	0	55	7	9
d7	No. of reactor animals in the previous 12 months	118	10	5	6	7	5	11	0	58	7	9
d27	No. of reactor animals in previous 13-24 months	421	71	4	21	31	42	14	3	200	7	28
d8	Herd Prevalence (%)	0.48	1.14	0.53	0.00	0.00	0.45	2.53	0.00	0.22	0.00	0.24
d20	Cumulative herd incidence this year (%)	0.34	0.53	0.18	0.24	0.27	0.15	0.31	0.00	0.73	0.21	0.34
d9	Annual herd incidence over the last 12 months (%)	0.36	0.56	0.24	0.22	0.29	0.17	0.41	0.00	0.80	0.20	0.32
d28	Annual herd incidence over the last 13-24 months (%)	0.94	1.87	0.24	0.62	0.21	0.56	0.68	0.26	2.83	0.20	0.56
d15	2008 Herd Incidence (%)	0.87	1.54	0.24	0.53	0.17	0.49	0.75	0.26	2.75	0.14	0.49
d10	2007 Herd Incidence (%)	0.72	2.50	0.31	0.38	0.45	0.61	0.53	0.26	1.28	0.38	0.21
d11	2006 Herd Incidence (%)	0.56	2.30	0.07	0.34	0.12	0.64	0.26	0.00	0.80	0.51	0.17
d44	2005 Herd Incidence (%)	0.41	0.32	0.22	0.21	0.27	0.91	0.38	0.24	0.55	0.18	0.33
d29	2004 Herd Incidence (%)	0.60	0.86	0.08	0.04	0.25	1.56	0.52	0.13	0.54	0.65	0.51
d21	Cumulative animal incidence this year (%)	0.012	0.011	0.003	0.005	0.006	0.004	0.012	0.000	0.046	0.008	0.007
d12	Annual animal incidence over last 12 months (%)	0.013	0.011	0.007	0.005	0.007	0.005	0.013	0.000	0.047	0.007	0.007
d30	Annual animal incidence over last 13-24 months (%)	0.044	0.076	0.006	0.016	0.030	0.038	0.016	0.008	0.159	0.007	0.021
d16	2008 Animal Incidence (%)	0.040	0.069	0.009	0.012	0.023	0.032	0.017	0.008	0.151	0.005	0.018
d13	2007 Animal Incidence (%)	0.041	0.107	0.006	0.037	0.018	0.086	0.016	0.008	0.079	0.007	0.006
d14	2006 Animal Incidence (%)	0.032	0.135	0.001	0.006	0.023	0.043	0.004	0.000	0.221	0.007	0.004
d45	2005 Animal Incidence (%)	0.039	0.105	0.004	0.004	0.008	0.179	0.009	0.005	0.031	0.006	0.009
d31	2004 Animal Incidence (%)	0.067	0.126	0.002	0.001	0.007	0.251	0.074	0.003	0.052	0.045	0.038

d33	APT during current month	0.06	0.22	0.09	0.00	0.00	0.11	0.07	0.00	0.06	0.00	0.05
d22	APT since start of year	0.10	0.07	0.03	0.05	0.05	0.03	0.11	0.00	0.30	0.07	0.06
d17	Current 12 month moving average APT	0.10	0.08	0.07	0.05	0.05	0.04	0.11	0.00	0.29	0.06	0.05
d18	2008 APT	0.28	0.40	0.08	0.10	0.19	0.11	0.14	0.06	0.92	0.05	0.14
d19	2007 APT	0.32	0.60	0.05	0.35	0.16	0.60	0.14	0.08	0.57	0.06	0.05
d51	2006 APT	0.24	0.81	0.01	0.06	0.19	0.28	0.04	0.00	0.45	0.07	0.04
d46	2005 APT	0.31	0.77	0.04	0.04	0.07	1.05	0.07	0.05	0.23	0.05	0.07
d32	2004 APT	0.50	0.70	0.02	0.01	0.06	1.49	0.55	0.03	0.35	0.38	0.29
d23	No. negative in contacts since start of year	1834	116	4	321	310	4	6	0	727	7	339
d73	No. Negative in contacts over last 12 months	1840	116	4	321	310	4	6	0	732	8	339
d24	No. negative in contacts during 2008	4988	837	5	49	1000	365	6	95	2362	3	266
d25	No. negative in contacts during 2007	6183	1300	2	1187	183	765	698	1	1972	4	71
d52	No. negative in contacts during 2006	4673	2888	1	3	116	416	0	8	1241	0	0
d47	No. negative in contacts during 2005	2580	46	1	3	205	1314	82	0	313	237	379
d34	No. negative in contacts during 2004	6035	1428	1	5	64	1984	1043	3	894	242	371
D 70	Reactor removal time 2009	13.0										
d37	Reactor removal time 2008	14.4	15.1	15.1	9.9	9.6	13.7	12.3	15.8	14.4	8.9	11.6
d55	Reactor removal time 2007	12.3	12.3	14.4	11.6	12.3	14.4	12.3	13.0	11.0	11.0	10.3
d50	Reactor removal time 2006	12.3	13.0	8.9	14.3	8.9	15.0	11.9	0.0	10.9	11.6	11.9
d35	Reactor removal time 2005	14.4	19.7	11.0	13.7	8.9	13.0	11.3	12.1	10.3	9.6	11.9
d36	Reactor removal time 2004	14.4	12.3	9.0	20.6	18.1	15.1	11.0	8.2	14.4	19.2	17.8
d38	Reactor herds with infection confirmed this year	13	2	0	1	1	0	0	0	9	0	0
d39	Reactor herds with infection not confirmed this year	51	5	1	5	3	4	4	0	17	3	9
d40	% Reactor herds with infection confirmed this year	20.3	28.6	0.0	16.7	25.0	0.0	0.0	0.0	34.6	0.0	0.0
d68	% Reactor herds with infection confirmed in 2008	23.4	38.1	0.0	18.2	20.0	40.0	9.1	50.0	22.1	0.0	16.7
d56	% Reactor herds with infection confirmed in 2007	37.1	17.4	0.0	37.5	36.4	80.0	44.4	0.0	52.6	0.0	14.3
d53	% Reactor herds with infection confirmed in 2006	54.1	75.6	0.0	0.0	66.7	66.7	25.0	0.0	53.8	0.0	0.0
d48	% Reactor herds with infection confirmed in 2005	45.2	100.0	0.0	0.0	0.0	73.3	33.3	0.0	40.0	50.0	45.5
d41	Reactor animals with infection confirmed	23	2	0	1	1	0	0	0	19	0	0
d42	Reactor animals with infection not confirmed	66	5	1	5	3	4	9	0	24	6	9
d43	% Reactor animals with infection confirmed	25.8	28.6	0.0	16.7	25.0	0.0	0.0	0.0	44.2	0.0	0.0

d69	% Reactor animals with infection confirmed in 2008	36.0	48.3	0.0	16.7	83.3	75.0	7.1	50.0	37.0	0.0	21.4
d57	% Reactor animals with infection confirmed in 2007	41.6	25.0	0.0	28.6	50.0	75.0	54.5	0.0	46.7	0.0	12.5
d54	% Reactor animals with infection confirmed in 2006	64.1	78.5	0.0	0.0	80.0	75.0	25.0	0.0	60.5	0.0	0.0
d49	% Reactor animals with infection confirmed in 2005	58.3	100.0	0.0	0.0	0.0	79.7	50.0	0.0	47.6	60.0	45.5
d58	No. of new BR herd breakdowns during current year which were confirmed by bacteriological culture	9	1	0	1	1	0	0	0	6	0	0
d66	No. of new BR herd breakdowns during last 12 months which were confirmed by bacteriological culture	10	1	0	1	1	0	0	0	7	0	0
D71	No. of new BR herd breakdowns during 2008 confirmed by bacteriological culture	34	7	0	2	0	5	1	1	16	0	2
d59	No. of new BR herd breakdowns during 2007 confirmed by bacteriological culture	53	9	0	3	4	14	3	0	19	0	1
d60	No. of new BR herd breakdowns during 2006 confirmed by bacteriological culture	60	31	0	0	2	11	1	0	15	0	0
d61	No. of new BR herd breakdowns during 2005 confirmed by bacteriological culture	33	2	0	0	0	20	2	0	5	1	3
d62	Cumulative culture confirmed herd incidence for 2009 (%)	0.04	0.06	0.00	0.04	0.04	0.00	0.00	0.00	0.19	0.00	0.00
d67	Culture confirmed herd incidence for last 12 months (%)	0.05	0.06	0.00	0.04	0.04	0.00	0.00	0.00	0.22	0.00	0.00
D72	Culture confirmed herd incidence 2008 (%)	0.16	0.38	0.00	0.09	0.00	0.17	0.07	0.13	0.47	0.00	0.07
d63	Culture confirmed herd incidence 2007 (%)	0.25	0.49	0.00	0.13	0.16	0.47	0.20	0.00	0.59	0.00	0.03
d64	Culture confirmed herd incidence 2006 (%)	0.28	1.62	0.00	0.00	0.08	0.37	0.06	0.00	0.46	0.00	0.00
d65	Culture confirmed herd incidence 2005 (%)	0.15	0.11	0.00	0.00	0.00	0.65	0.13	0.00	0.15	0.06	0.10

Brucellosis: number of reactor herds by month and by DVO in 2009 and unique herd breakdowns during the year

2009		DVO_CODE										
Year	Month	Armagh	Ballymena	Coleraine	Dungannon	Enniskillen	Larne	L'Derry	Newry	Nt'Ards	Omagh	Total
2009	1	0	0	1	0	0	1	0	3	0	2	7
2009	2	0	0	0	0	1	1	0	5	0	1	8
2009	3	1	0	1	1	0	0	0	1	0	2	6
2009	4	2	1	1	1	0	1	0	6	1	2	15
2009	5	0	0	0	0	0	0	0	2	0	0	2
2009	6	0	0	1	1	0	0	0	1	0	0	3
2009	7	1	0	0	0	0	0	0	1	0	0	2
2009	8	1	0	0	0	1	0	0	0	2	0	4
2009	9	0	0	0	3	0	0	0	1	0	1	5
2009	10	1	0	1	0	0	0	0	1	0	0	3
2009	11	3	1	0	0	2	1	0	1	0	1	9
2009	12											0
Total		9	2	5	6	4	4	0	22	3	9	64

Unique Herd Breakdowns		DVO_CODE										
Year	Armagh	Ballymena	Coleraine	Dungannon	Enniskillen	Larne	L'Derry	Newry	Nt'Ards	Omagh	Total Herds	
2009	9	2	6	6	4	4	0	26	3	9	69	

Brucellosis: number of reactor herds by month and by DVO in 2008 and unique herd breakdowns during the year

2008		DVO_CODE										
Year	Month	Armagh	Ballymena	Coleraine	Dungannon	Enniskillen	Larne	L'Derry	Newry	Nt'Ards	Omagh	Total
2008	1	5	0	2	0	1	0	0	13	0	1	22
2008	2	3	0	0	0	2	4	1	10	0	3	23
2008	3	8	0	2	0	3	0	1	13	0	1	28
2008	4	0	0	2	1	2	1	0	2	0	2	10
2008	5	2	0	1	0	0	0	0	10	0	1	14
2008	6	3	0	0	0	0	0	0	9	0	0	12
2008	7	1	0	1	0	1	0	0	5	0	0	8
2008	8	1	0	1	1	1	1	0	5	1	1	12
2008	9	3	1	3	1	2	2	0	6	0	2	20
2008	10	0	0	0	0	0	0	0	4	0	1	5
2008	11	1	1	0	0	1	1	0	7	1	2	14
2008	12	1	1	0	1	1	2	0	3	0	0	9
Total		28	3	12	4	14	11	2	87	2	14	177

Unique Herd Breakdowns		DVO_CODE										
Year	Armagh	Ballymena	Coleraine	Dungannon	Enniskillen	Larne	L'Derry	Newry	Nt'Ards	Omagh	Total Herds	
2008	29	3	13	6	15	12	3	95	2	14	192	

Brucellosis: number of reactor herds by month and by DVO in 2007 and unique herd breakdowns during the year

2007		DVO_CODE										
Year	Month	Armagh	Ballymena	Coleraine	Dungannon	Enniskillen	Larne	L'Derry	Newry	Nt'Ards	Omagh	Total
2007	1	2	0	0	0	2	0	0	1	1	0	6
2007	2	2	0	0	0	0	0	0	2	1	0	5
2007	3	1	0	0	0	0	0	0	1	0	0	2
2007	4	4	0	0	3	3	3	0	3	0	0	16
2007	5	6	0	2	0	0	0	0	3	1	0	12
2007	6	3	0	0	0	1	0	1	0	0	0	5
2007	7	2	0	1	2	2	0	0	5	0	1	13
2007	8	5	0	0	1	0	0	0	6	0	1	13
2007	9	5	0	0	0	1	0	0	1	0	0	7
2007	10	5	1	2	1	3	2	0	6	1	1	22
2007	11	4	2	2	2	3	2	1	8	1	1	26
2007	12	7	1	2	2	3	1	0	5	1	2	24
Total		46	4	9	11	18	8	2	41	6	6	151

Unique Herd Breakdowns		DVO_CODE										
Year	Armagh	Ballymena	Coleraine	Dungannon	Enniskillen	Larne	L'Derry	Newry	Nt'Ards	Omagh	Total Herds	
2007	47	4	9	11	20	9	2	42	6	7	157	

A herd is defined as being a Br reactor herd if it had at least one Br reactor animal in that month and no Br reactor animals during the previous 12 months.

A Br unique herd breakdown is defined as a herd which has had at least one BR reactor during the specified calendar year irrespective of any Br reactors during the previous calendar year.

Brucellosis: number of reactor animals by month and by DVO 2009

2009	DVO_CODE											
Year	Month	Armagh	Ballymena	Coleraine	Dungannon	Enniskillen	Larne	L'Derry	Newry	Nt'Ards	Omagh	Total
2009	1	0	0	1	0	0	1	0	4	0	2	8
2009	2	0	0	1	0	1	1	0	9	0	1	13
2009	3	1	0	1	1	0	0	0	14	0	2	19
2009	4	2	1	1	1	0	1	0	13	1	2	22
2009	5	0	0	0	0	0	0	0	2	0	0	2
2009	6	0	0	1	1	0	0	0	2	0	0	4
2009	7	1	0	0	0	0	0	0	1	0	0	2
2009	8	1	0	0	0	1	0	0	0	2	0	4
2009	9	0	0	0	3	0	0	0	7	0	1	11
2009	10	1	0	1	0	0	0	0	2	4	0	8
2009	11	3	1	0	0	2	6	0	1	0	1	14
2009	12											0
Total		9	2	6	6	4	9	0	55	7	9	107

Brucellosis: number of reactor animals by month and by DVO 2008

2008	DVO_CODE											
Year	Month	Armagh	Ballymena	Coleraine	Dungannon	Enniskillen	Larne	L'Derry	Newry	Nt'Ards	Omagh	Total
2008	1	5	0	3	18	1	1	0	30	0	1	59
2008	2	9	0	1	0	2	5	1	17	0	3	38
2008	3	18	0	2	0	6	0	2	16	0	3	47
2008	4	9	0	2	1	18	1	0	9	0	11	51
2008	5	8	0	1	0	0	0	0	13	0	1	23
2008	6	4	0	0	0	1	0	0	52	0	0	57
2008	7	2	0	1	0	1	0	0	14	0	0	18
2008	8	2	0	1	1	1	1	0	10	1	1	18
2008	9	4	1	4	1	2	4	0	10	0	2	28
2008	10	0	0	0	2	2	0	0	7	0	1	12
2008	11	2	2	0	0	1	1	0	10	4	2	22
2008	12	1	3	0	1	1	2	0	3	0	0	11
Total		64	6	15	24	36	15	3	191	5	25	384

Brucellosis: number of reactor animals by month and by DVO 2007

2007	DVO_CODE											
Year	Month	Armagh	Ballymena	Coleraine	Dungannon	Enniskillen	Larne	L'Derry	Newry	Nt'Ards	Omagh	Total
2007	1	2	0	0	0	34	3	0	2	1	0	42
2007	2	2	0	0	0	0	0	0	4	1	0	7
2007	3	1	0	0	0	0	0	0	2	0	1	4
2007	4	4	0	0	3	20	4	0	13	0	0	44
2007	5	38	0	30	0	19	0	0	22	1	0	110
2007	6	5	0	0	0	1	0	1	0	0	0	7
2007	7	3	0	1	2	2	0	0	8	0	1	17
2007	8	13	0	0	3	0	0	0	8	0	1	25
2007	9	12	0	0	0	1	0	0	1	0	0	14
2007	10	7	1	8	1	6	3	0	18	1	1	46
2007	11	4	2	4	2	7	4	2	11	1	1	38
2007	12	8	1	6	8	7	1	0	12	2	3	48
Total		99	4	49	19	97	15	3	101	7	8	402

A Br reactor animal is defined as an animal where the manual interpretation field for a serological test is positive ('P') with the first test date being taken as the time at which the animal became a reactor.

Month = November 2009

Ref.		Total	Armagh	Ballymena	Coleraine	Dungannon	Enniskillen	Larne	L'derry	Newry	Nt'ards	Omagh
b16	No. herds with any test completed in month	6728	581	482	728	812	1006	556	242	922	427	972
b17	No. herds with any test, from start of year	20988	1840	1287	2358	2495	2992	1509	799	3205	1540	2963
b35	All herds with any test, from start of year	23413	2293	1382	2650	2830	3119	1618	894	3648	1815	3164
b18	No. herds with any test, from start of year (no cattle)	2425	453	95	292	335	127	109	95	443	275	201
b19	No. herds with herd test completed in month	2892	264	187	285	319	444	237	116	459	170	411
b20	No. herds with herd test, from start of year	18222	1682	993	1894	2157	2650	1211	686	2998	1387	2564
b50	All herds with herd test, from start of year	20993	2165	1111	2239	2545	2798	1340	800	3498	1688	2809
b21	No. herds with herd test, from start of year (no cattle)	2771	483	118	345	388	148	129	114	500	301	245
b22	No. herds with herd test during last 12 months	19628	1754	1115	2075	2330	2862	1384	749	3109	1468	2782
b39	No. herds with herd test during last 13-24 months	19789	1809	1142	2115	2299	2861	1406	770	3127	1462	2798
b33	No. herds with herd test during 2008	19766	1806	1132	2124	2299	2857	1382	766	3135	1457	2808
b23	No. herds with herd test during 2007	20232	1822	1186	2198	2342	2933	1444	749	3181	1541	2836
b24	No. herds with herd test during 2006	20658	1899	1216	2189	2456	2969	1459	807	3241	1553	2869
b48	No. herds with herd test during 2005	20852	1862	1240	2178	2444	3047	1514	795	3256	1574	2942
b51	No. herds with herd test during 2004	20152	1968	1163	2051	2269	3127	1435	720	3328	1433	2658
b25	No. herds with any risk test completed	9265	1128	506	1023	989	1270	669	238	1776	584	1082
b26	No. herds with herd risk test completed	3960	742	144	391	286	511	207	46	1275	81	277
b27	No. herds with restricted herd test completed	168	33	4	9	13	14	9	0	58	7	21

b28	Number of dairy herds	3294	274	286	496	375	357	289	74	407	292	444
b37	No. dairy herds only tested by bulk milk ELISA since start of year	743	27	129	210	98	38	93	20	21	31	76
b29	No. dairy herds only tested by bulk milk ELISA	531	19	114	172	68	17	70	10	11	14	36
b40	No. dairy herds only tested by bulk milk ELISA during last 13-24 months	549	11	88	154	96	14	75	14	21	27	49
b38	Total no. herds tested for Br since start of year	18965	1709	1122	2104	2255	2688	1304	706	3019	1418	2640
b30	Total no. herds tested for Br during last 12 months	20159	1773	1229	2247	2398	2879	1454	759	3120	1482	2818
b41	Total no. herds tested for Br during last 13-24 months	20338	1820	1230	2269	2395	2875	1481	784	3148	1489	2847
b34	Total no. herds tested for Br during 2008	20332	1817	1236	2280	2389	2872	1465	778	3163	1480	2852
b31	Total no. herds tested for Br during 2007	20869	1841	1306	2382	2447	2954	1511	770	3202	1570	2886
b32	Total no. herds tested for Br during 2006	21259	1914	1335	2360	2535	2989	1542	827	3258	1576	2923
b49	Total no. herds tested for Br during 2005	21567	1880	1351	2392	2571	3065	1577	820	3279	1622	3010
b43	Total no. herds tested for Br during 2004	20990	1977	1297	2246	2410	3139	1532	755	3343	1530	2761

Month = November 2009												
Ref		Total	Armagh	Ballymena	Coleraine	Dungannon	Enniskiller	Larne	L'derry	Newry	Nt'ards	Omagh
c1	Total number of tests in current month	8537	784	627	940	1094	1211	740	293	1100	532	1216
c2	Total number of tests from start of year	89118	8197	6213	10028	10909	12809	7327	2725	12291	6043	12576
c3	No. tests during the same time period in the previous year	94466	9009	6718	10746	10971	13817	7864	3136	12809	6290	13106
c4	% change between years	0.8	-3.3	-0.8	2.1	0.5	1.3	-1.9	-10.4	5.9	5.6	-0.8
c5	No. tests in the previous 12 months	96190	8888	6748	10931	11745	13759	7936	2960	13234	6478	13511
c6	No. animal tests in current month	146731	13599	10668	18557	14474	18965	13682	5626	17093	12339	21728
c7	No. of animal tests from start of year	1100142	120358	63872	117332	117946	126312	84626	34905	183051	103748	147992
c8	No. animal tests during the same time period in the previous year	1197269	149179	67588	129187	112555	153051	94878	43203	190823	101331	155474
c9	% change between years	-6.4	-25.6	2.7	-7.2	4.1	-16.7	-9.0	-23.4	0.6	6.4	-5.5
c10	No. animal tests in previous 12 months	1225702	132506	72419	131657	130235	142618	98018	39327	200777	113058	165087
c11	No. cattle eligible for Br testing	946837	82426	67657	127077	102866	102961	83425	36663	118498	97471	127793
c12	No. cattle herds eligible for Br testing	23973	2169	1486	2691	2847	3275	1751	944	3675	1812	3323
c13	No. restricted herd tests during month	14	7	0	1	1	1	2	0	2	0	0
c14	No. animals tested	991	518	0	107	1	143	128	0	94	0	0
c15	No. herd tests during month	2910	267	187	287	325	446	240	116	460	170	412
c16	No. animals tested	129631	12008	9193	16658	12260	16783	12195	5088	15130	11084	19232
c17	No. individual tests during month	5627	517	440	653	769	765	500	177	640	362	804
c18	No. animals tested	17100	1591	1475	1899	2214	2182	1487	538	1963	1255	2496
c19	No. CTA tests during month	268	40	16	40	26	22	36	11	33	16	28
c20	No. animals with CTA test	314	47	20	40	35	22	38	18	44	16	34
c21	No. CTT tests during month	96	26	10	11	23	4	2	6	6	1	7
c22	No. animals with CTT test	129	30	13	16	31	4	2	13	12	1	7
c36	No. animals Br tested since start of year	818854	81640	53291	96685	95335	98116	68867	30198	117289	88971	116627
c23	No. animals Br tested in previous 12 months	883764	85988	57842	106321	102203	105749	78082	33465	122441	95117	126681
c39	No. animals Br tested in previous 13-24 months	905552	90974	62492	112093	94323	109736	81668	36641	124444	93127	130593
c24	No. animals Br tested in 2008	908811	91534	61211	113063	96124	110403	81534	36269	124319	94443	132775

c25	No. animals Br tested in 2007	911394	90027	61673	113643	97367	111311	84280	33430	124695	97294	130288
c26	No. animals Br tested in 2006	928500	92643	60862	112747	104149	114386	83121	36609	126674	101775	128566
c61	No. animals Br tested in 2005	911790	83476	60686	108024	100843	116686	85152	35739	121948	95202	129923
c43	No. animals Br tested in 2004	860653	87159	53453	97093	95858	112411	76668	30836	119660	85925	111964
c37	No. animals BME tested since start of year	66903	3754	10988	19421	7136	1803	9109	2910	1534	3657	6591
c27	No. animals BME tested in previous 12 months	48920	2612	10098	16168	5214	652	6768	1711	729	1580	3388
c40	No. animals BME tested in previous 13-24 months	52929	1935	7567	15196	9010	612	7729	1573	1519	3593	4195
c28	No. animals BME tested in 2008	53083	1179	9249	15082	8266	1102	8540	1314	2221	2745	3385
c29	No. animals BME tested in 2007	62135	2096	10732	18669	9194	919	6877	2781	2318	3564	4985
c30	No. animals BME tested in 2006	56682	1169	10405	16977	6539	910	8147	3343	1368	2202	5622
c62	No. animals BME tested in 2005	61779	1434	8633	19522	10361	1174	5415	2838	2090	5510	4802
c44	No. animals BME tested in 2004	69547	1058	10009	16930	9544	1231	8802	4072	954	9622	7325
c31	Total animals currently monitored by BME	273062	25404	22997	43990	25556	18011	25749	7886	33442	35267	34760
c38	Current total animals under Br surveillance since start of year	885757	85394	64279	116106	102471	99919	77976	33108	118823	92628	123218
c32	Current total animals under Br surveillance	932684	88600	67940	122489	107417	106401	84850	35176	123170	96697	130069
c41	Total animals under Br surveillance in last 13-24 months	958481	92909	70059	127289	103333	110348	89397	38214	125963	96720	134788
c33	Total animals under Br surveillance in 2008	961894	92713	70460	128145	104390	111505	90074	37583	126540	97188	136160
c34	Total animals under Br surveillance in 2007	973529	92123	72405	132312	106561	112230	91268	39952	128042	103977	134188
c35	Total animals under Br surveillance in 2006	985182	93812	71267	129724	110688	115296	91268	86464	37977	128876	134188
c63	Total animals under Br surveillance in 2005	973569	84910	69319	127546	111204	117860	90567	38577	124038	100712	134725
c42	Total animals under Br surveillance in 2004	930200	88217	63462	114023	105402	113642	85470	34908	120614	95547	119289

Month = November 2009

Ref	Total	Armagh	Ballymena	Coleraine	Dungannon	Enniskillen	Larne	L'derry	Newry	Nt'ards	Omagh	
c82	No. premovement tests off-farm in 2009	46039	3098	3808	5610	5979	6926	4241	1428	4683	3027	7239
c76	No. premovement tests off-farm in 2008	48410	2962	4186	5976	6234	6888	4606	1551	4781	3357	7869
c70	No. premovement tests off-farm in 2007	44457	2468	4236	5574	5456	5959	4558	1395	4663	3020	7128
c64	No. premovement tests off-farm in 2006	43112	2518	4009	5493	5539	5646	4357	1285	4483	3143	6639
c45	No. premovement tests off-farm in 2004 & 2005	29340	2056	2739	3695	3890	3714	2693	925	3181	2029	4418
c83	No. post-movement tests in 2009	820	96	54	72	117	76	52	20	180	50	103
c77	No. post-movement tests in 2008	1067	111	84	91	167	89	64	39	236	61	125
c71	No. post-movement tests in 2007	1136	132	83	133	134	101	82	42	186	84	159
c65	No. post-movement tests in 2006	1185	133	111	136	141	89	86	37	210	73	169
c47	No. post-movement tests in 2004 & 2005	1606	189	164	180	174	129	119	49	242	146	214
c84	No. premovement animal tests off-farm in 2009	175413	12634	14236	20601	22142	24653	15882	6121	18117	12550	28477
c78	No. premovement animal tests off-farm in 2008	178407	11481	15213	22219	21585	23284	16986	6779	17556	13847	29457
c72	No. premovement animal tests off-farm in 2007	170535	10191	15272	21030	20115	21117	17403	6246	17856	12577	28728
c66	No. premovement animal tests off-farm in 2006	168585	10638	14446	21309	21166	19996	17200	6333	16617	13707	27173
c49	No. premovement animal tests off-farm in 2004 & 2005	123887	8836	10075	15573	16002	14292	11084	5207	13395	9840	19583
c85	No. post-movement animal tests in 2009	1467	135	89	114	198	110	106	59	374	73	209
c79	No. post-movement animal tests in 2008	1828	195	141	167	264	170	85	58	418	106	224
c73	No. post-movement animal tests in 2007	2150	269	139	297	221	146	138	106	350	150	334
c67	No. post-movement animal tests in 2006	2181	205	231	278	270	160	129	79	383	124	322
c51	No. post-movement animal tests in 2004 & 2005	3776	400	403	507	418	215	197	102	608	415	511
c86	No. reactors detected by movement tests 2009	6	2	0	0	2	1	0	0	0	0	1
c80	No. reactors detected by movement tests 2008	24	1	0	6	0	1	1	0	7	0	8
c74	No. reactors detected by movement tests 2007	11	1	2	0	2	3	0	0	1	0	2
c68	No. reactors detected by movement tests 2006	8	0	0	2	0	2	0	0	1	2	1
c53	No. reactors detected by movement tests 2004 & 2005	7	1	0	1	1	2	0	0	0	0	2
c87	No. inconclusives detected by movement tests 2009	1270	122	97	134	183	226	110	24	90	68	216
c81	No. inconclusives detected by movement tests 2008	2006	150	166	213	252	300	161	80	194	142	348
c75	No. inconclusives detected by movement tests 2007	1617	183	170	190	191	202	158	55	148	87	233
c69	No. inconclusives detected by movement tests 2006	1323	145	95	130	224	170	122	51	97	89	200
c55	No. inconclusives detected by movement tests 2004 & 2005	505	68	25	54	79	43	28	31	58	51	68
c57	Total pre-movement and post-movement tests	217172	13763	19474	26960	27831	29617	20858	6771	22845	14990	34063
c58	Total pre-movement and post-movement animal tests	828229	54984	70245	102095	102381	104143	79210	31090	85674	63389	135018
c59	Total BR reactors detected by movement tests	56	5	2	9	5	9	1	0	9	2	14
c60	Total BR inconclusives detected by movement tests	6721	668	553	721	929	941	579	241	587	437	1065

Explanatory Comments for Brucellosis Statistics - B. Outstanding_Tests

Data Title	Explanation
B1 No. herds due a herd test in month	= Blood test still due from the above month's allocation.
B2 No. of herd tests overdue by 1 to 2 months	Number of herds with the herd blood test due 1 to 2 months before the above month.
B3 No. herd tests overdue by 3 to 4 months	Number of herds with the herd blood test due 3 to 4 months before the above month.
B4 No. herd tests overdue by more than 4 months	Number of herds with the herd blood tests due more than 4 months before the above month.
B5 Total outstanding herd tests	Summation of all outstanding BR herd blood tests with a due date on or before the above month.
B6 No. herds due a herd risk test in month	HERD RISK TEST . Herd-level blood test which is not routine or of restricted status (RHT,STC,VTC). The risk test still due from the above month's allocation.
B7 No. herd risk tests overdue by 1 to 2 months	Number of herds with a herd risk blood test due 1 to 2 months before the above month.
B8 No. herd risk tests overdue by 3 to 4 months	Number of herds with the herd risk blood test due 3 to 4 months before the above month.
B9 No. herd risk tests overdue by > 4 months	Number of herds with the herd risk blood test due more than 4 months before the above month.
B10 Total outstanding herd risk tests	Summation of all outstanding BR herd risk blood tests with a due date on or before the above month.
B11 No. herds due a restricted herd test in month	RESTRICTED HERD TEST. Br herd-level blood test which of restricted status (RHT). The risk test still due from the above month's allocation.
B12 No. restricted herd tests overdue by 1 to 2 months	Number of herds with a Br RHT due 1 to 2 months before the above month.
B13 No. restricted herd tests overdue by 3 to 4 months	Number of herds with a Br RHT due 3 to 4 months before the above month.
B14 No. restricted herd tests overdue by > 4 months	Number of herds with a Br RHT due more than 4 months before the above month.
B15 Total outstanding restricted herd tests	Summation of all outstanding Br RHTs with a due date on or before the above month.
B36 No. of individual test due in month	Any individual animal level test that is still due from the above months allocation.
B42 No. individual tests overdue by 1 to 2 months	Any individual animal level due 1 to 2 months before the above month.
B44 No. individual tests overdue by 3 to 4 months	= Any individual animal level due 3 to 4 months before the above month.
B45 No. individual tests overdue by > 4 months	= Any individual animal level due more than 4 months before the above month.
B46 Total outstanding individual tests	Summation of all outstanding BR individual animal level tests with a due date on or before the above month.
B47 Total outstanding RI tests	Summation of all outstanding BR RI tests with a due date on or before the above month.
b52 Total outstanding CTTs	Summation of all outstanding BR CTTs (Check Test Trace) with a due date on or before the above month.

Explanatory Comments for Brucellosis Statistics - B. Testing Herds

B16	No. herds with any test completed in month	Blood Test of any disease status and size (herd or animal-level). Tests with no animals are excluded.
B17	No. herds with any test, from start of year	Blood Test of any disease status and size (herd or animal-level) carried out on a herd since 1st January. Tests with no animals are excluded.
B35	All herds with any test, from start of year	Blood test of any disease status and size (herd or animal-level) carried out on a herd since 1st January. Tests with no animals are included.
B18	No. herds with any test, from start of year (no cattle)	Herd or individual blood test of any disease status (routine, risk or restricted) where no cattle were recorded at all such tests since 1st January
B19	No. herds with herd test completed in month	Herd level blood test of any disease status (routine, risk or restricted) completed during the above month. Tests with no animals are excluded.
B20	No. herds with herd test, from start of year	Herd level blood test of any disease status (routine, risk or restricted) completed since 1st January. Tests with no animals are excluded.
B50	All herds with herd test, from start of year	Herd level blood test of any disease status (routine, risk or restricted) completed since 1st January. Tests with no animals are included.
B21	No. herds with herd test, from start of year (no cattle)	Herd level blood test of any disease status (routine, risk or restricted) where no cattle were recorded at all such herd tests since 1st January.
B22	No. herds with herd test during last 12 months	Herd level blood test of any disease status (routine, risk or restricted) completed in the 12 month period from the above month. Tests with no animals are excluded.
B39	No. herds with herd test during last 13-24 months	Herd level blood test of any disease status (routine, risk or restricted) completed in the 13-24 month period from the above month. Tests with no animals are excluded.
B23	No. herds with herd test during 2007	Herd level blood test of any disease status (routine, risk or restricted) completed in the calendar year. Tests with no animals are excluded.
B24	No. herds with herd test during 2006	Herd level blood test of any disease status (routine, risk or restricted) completed in the calendar year. Tests with no animals are excluded.
B48	No. herds with herd test during 2005	Herd level blood test of any disease status (routine, risk or restricted) completed in the calendar year. Tests with no animals are excluded.
B51	No. herds with herd test during 2004	Herd level blood test of any disease status (routine, risk or restricted) completed in the calendar year. Tests with no animals are excluded.
B33	No. herds with herd test during 2008	Herd level blood test of any disease status (routine, risk or restricted) completed in the calendar year. Tests with no animals are excluded.
B25	No. herds with any risk test completed	Herd has had a herd or individual level risk blood test since start of calendar year and number tested > 0
B26	No. herds with herd risk test completed	Herd has had a herd level risk blood test since start of calendar year and number tested > 0.
B27	No. herds with restricted herd test completed	Herd has had a restricted herd test (RHT) since start of calendar year and number tested > 0.

B28	Number of dairy herds	Number of herds with a Dairy Supplier Number and/or Milk Licence Number recorded on APHIS and currently have dairy cows in the herd.
B37	No. dairy herds only tested by bulk milk ELISA since start of year	No. dairy herds where no herd blood test was recorded since the start of the calendar year i.e. tested only by bulk milk ELISA (BME).
B29	No. dairy herds only tested by bulk milk ELISA	No. dairy herds where no herd blood test was recorded during the last 12 month period i.e. tested only by bulk milk ELISA (BME).
B40	No. dairy herds only tested by bulk milk ELISA during last 13-24 months	No. dairy herds where no herd blood test was recorded during the last 13-24 month period i.e. tested only by bulk milk ELISA (BME).
B38	Total no. herds tested for Br since start of year	No. herds tested by serology or bulk milk ELISA completed since the start of the calendar year. Tests with no animals are excluded. Currently it is assumed that all dairy herds are subjected to BME testing.
B30	Total no. herds tested for Br during last 12 months	No. herds tested by serology or bulk milk ELISA completed in the 12 month period from the above month. Tests with no animals are excluded. Currently it is assumed that all dairy herds are subjected to BME testing.
B41	Total no. herds tested for Br during last 13-24 months	No. herds tested by serology or bulk milk ELISA completed in the 13-24 month period from the above month. Tests with no animals are excluded. Currently it is assumed that all dairy herds are subjected to BME testing.
B31	Total no. herds tested for Br during 2007	No. herds tested by serology or bulk milk ELISA completed during the calendar year. Tests with no animals are excluded. Currently it is assumed that all dairy herds are subjected to BME testing.
B32	Total no. herds tested for Br during 2006	No. herds tested by serology or bulk milk ELISA completed during the calendar year. Tests with no animals are excluded. Currently it is assumed that all dairy herds are subjected to BME testing.
B49	Total no. herds tested for Br during 2005	No. herds tested by serology or bulk milk ELISA completed during the calendar year. Tests with no animals are excluded. Currently it is assumed that all dairy herds are subjected to BME testing.
B43	Total no. herds tested for Br during 2004	No. herds tested by serology or bulk milk ELISA completed during 2004. Tests with no animals are excluded. Currently it is assumed that all dairy herds are subjected to BME testing. 2004 figures also assume that the number of dairy farms are the same as were present on APHIS in February 2003.
B34	Total no. herds tested for Br during 2008	No. herds tested by serology or bulk milk ELISA completed during the calendar year. Tests with no animals are excluded. Currently it is assumed that all dairy herds are subjected to BME testing.

Explanatory Comments for Brucellosis Statistics - C. Testing Animals

C1	Total number of tests in current month	Number of herds and individual blood tests performed in the month stated above. Tests with no animals are excluded
C2	Total number of tests from start of year	From 1st January. Only includes blood sample tests. Tests with no animals are excluded.
C3	No. tests during the same time period in the previous year	From 1st January of previous year. Only includes blood sample tests. Tests with no animals are excluded.
C4	% change between years	Difference between the number of blood tests carried out during the current year and the number carried out in the previous expressed as a percentage.
C5	No. tests in the previous 12 months	Last 12 month period from the above month. Only includes blood sample tests. Tests with no animals are excluded.
C6	No. animal tests in current month	Animal test = a count of the number of animals blood tested within each herd or individual test. Some animals may have been blood tested multiple times during the year.
C7	No. animal tests from start of year	Number of animal tests carried out since 1st January. Only includes Blood Sample Tests
C8	No. animal tests during the same time period in the previous year	Number of animal blood tests carried out from 1st January in the previous year over the same time interval as recorded for the current year.
C9	% change between years	Difference between the number of animal blood tests during the current year and the number carried out in the previous expressed as a percentage.
C10	No. animal tests in previous 12 months	Last 12 month period from the above month. Only includes blood sample tests.
C11	No. cattle eligible for BR testing	Based on the average number of animals presented at Br herd blood tests over last 4 years. Herds which have only been tested by BME are excluded.
C12	No. cattle herds eligible for BR testing	Based on cattle being presented for a BR herd blood tests over last 4 years. Herds with '0' cattle are excluded. Herds which have only been tested by BME are also excluded.
C13	No. restricted herd tests during month	All restricted herd tests (RHT, STC, VTC) sampled during the above month.
C14	No. animals tested	Total of the animals reported as being tested within restricted herd tests (RHT, STC, VTC) during the above month.
C15	No. herd tests during month	Total of number of herd blood tests sampled during the above month.
C16	No. animals tested	Total of the animals reported as being blood tested within all herd tests during the above month.
C17	No. individual tests during month	Total number individual tests sampled during the above month.
C18	No. animals tested	Total of the animals reported as being blood tested within all individual tests during the above month.
c19	No. CTA tests during month	Total number of check test abortions (CTAs) tests sampled during the above month.
c20	No. animals with CTA test	Total of the animals reported as being tested within all CTA tests during the above month.
c21	No. CTT tests during month	Total number of check test tracing (CTTs) tests sampled during the above month.
c22	No. animals with CTT test	Total of the animals reported as being tested within all CTT tests during the above month.
c36	No. animals Br tested since start of year	Animals identified as having had at least one Br blood test since the start of the calendar year. Due to the same animals being sampled in different DVO areas, the 'Total' is not the sum of the DVO figures.
c23	No. animals BR tested in previous 12 months	Animals identified as having had at least one BR blood test during the last 12 month period from the above month. Due to the same animals being sampled in different DVO areas, the 'Total' is not the sum of the DVO figures.
c39	No. animals BR tested in previous 13-24 months	Animals identified as having had at least one BR blood test during the last 13-24 month period from the above month. Due to the same animals being sampled in different DVO areas, the 'Total' is not the sum of the DVO figures.
c25	No. animals BR tested in 2007	Animals identified as having had at least one Br blood test during the calendar year. Due to the same animals being sampled in different DVO areas, the 'Total' is not the sum of the DVO figures.
c26	No. animals BR tested in 2006	Animals identified as having had at least one Br blood test during the calendar year. Due to the same animals being sampled in different DVO areas, the 'Total' is not the sum of the DVO figures.
c61	No. animals BR tested in 2005	Animals identified as having had at least one Br blood test during the calendar year. Due to the same animals being sampled in different DVO areas, the 'Total' is not the sum of the DVO figures.
c43	No. animals BR tested in 2004	Animals identified as having had at least one Br blood test during the calendar year. Due to the same animals being sampled in different DVO areas, the 'Total' is not the sum of the DVO figures.
c24	No. animals BR tested in 2008	Animals identified as having had at least one Br blood test during the calendar year. Due to the same animals being sampled in different DVO areas, the 'Total' is not the sum of the DVO figures.
c37	No. animals BME tested since start of year	Estimated number of animals tested within dairy herds which were subjected to only bulk milk ELISA (BME) surveillance for BR i.e. not blood sampled since the start of year. Animal count based on >2yr old female cattle of a dairy breed within each dairy herd.

c27	No. animals BME tested in previous 12 months	Estimated number of animals tested within dairy herds which were subjected to only bulk milk ELISA (BME) surveillance for BR i.e. not blood sampled during the last 12 months. Animal count based on >2yr old female cattle of a dairy breed.
c40	No. animals BME tested in previous 13-24 months	Estimated number of animals tested within dairy herds which were subjected to only bulk milk ELISA (BME) surveillance for BR i.e. not blood sampled during the last 13-24 months. Animal count based on >2yr old female cattle of a dairy breed.
c29	No. animals BME tested in 2007	Estimated number of animals tested within dairy herds which were subjected only to bulk milk ELISA (BME) surveillance for BR i.e. not blood sampled during the calendar year. Animal count based on >2yr old female cattle of a dairy breed
c30	No. animals BME tested in 2006	Estimated number of animals tested within dairy herds which were subjected only to bulk milk ELISA (BME) surveillance for BR i.e. not blood sampled during the calendar year. Animal count based on >2yr old female cattle of a dairy breed
C62	No. animals BME tested in 2005	Estimated number of animals tested within dairy herds which were subjected only to bulk milk ELISA (BME) surveillance for BR i.e. not blood sampled during the calendar year. Animal count based on >2yr old female cattle of a dairy breed
C44	No. animals BME tested in 2004	Estimated number of animals tested within dairy herds which were subjected only to bulk milk ELISA (BME) surveillance for BR i.e. not blood sampled during the calendar year. Animal count based on >2yr old female cattle of a dairy breed
c28	No. animals BME tested in 2003	Estimated number of animals tested within dairy herds which were subjected only to bulk milk ELISA (BME) surveillance for BR i.e. not blood sampled during the calendar year. Animal count based on >2yr old female cattle of a dairy breed
c31	Total animals currently monitored by BME	Estimated number of animals tested within dairy herds which were subjected to bulk milk ELISA (BME) surveillance for BR. Animal count based on >2yr old female cattle of a dairy breed.
c38	Current total animals under Br surveillance since start of year	Total number of animals in herds tested by serology or bulk milk ELISA completed since the start of the calendar year. Tests with no animals are excluded. Currently it is assumed that all dairy herds are subjected to BME testing.
c32	Current total animals under Br surveillance	Total number of animals in herds tested by serology or bulk milk ELISA completed in the 12 month period from the above month. Tests with no animals are excluded. Currently it is assumed that all dairy herds are subjected to BME testing.
c41	Total animals under Br surveillance in last 13-24 months	Total number of animals in herds tested by serology or bulk milk ELISA completed in the 13-24 month period from the above month. Tests with no animals are excluded. Currently it is assumed that all dairy herds are subjected to BME testing.
c34	Total animals under Br surveillance in 2007	Total number of animals in herds tested by serology or bulk milk ELISA completed during the calendar year. Currently it is assumed that all dairy herds are subjected to BME testing.
c35	Total animals under Br surveillance in 2006	Total number of animals in herds tested by serology or bulk milk ELISA completed during the calendar year. Currently it is assumed that all dairy herds are subjected to BME testing.
C63	Total animals under Br surveillance in 2005	Total number of animals in herds tested by serology or bulk milk ELISA completed during the calendar year. Currently it is assumed that all dairy herds are subjected to BME testing.
C42	Total animals under Br surveillance in 2004	Total number of animals in herds tested by serology or bulk milk ELISA completed during the calendar year. Currently it is assumed that all dairy herds are subjected to BME testing.
C33	Total animals under Br surveillance in 2008	Total number of animals in herds tested by serology or bulk milk ELISA completed during the calendar year. Currently it is assumed that all dairy herds are subjected to BME testing.

Explanatory Comments for Brucellosis Statistics - C1. Premovement Testing

c82	No. premovement tests off-farm in 2009	Number of premovement tests carried out before animal movement occurred (MTO) during the current year.
c76	No. premovement tests off-farm in 2008	Number of premovement tests carried out before animal movement occurred (MTO) during 2008. The requirement for premovement testing was introduced on 1st December 2004.
c70	No. premovement tests off-farm in 2007	Number of premovement tests carried out before animal movement occurred (MTO) during 2007. The requirement for premovement testing was introduced on 1st December 2004.
c64	No. premovement tests off-farm in 2006	Number of premovement tests carried out before animal movement occurred (MTO) during 2006. The requirement for premovement testing was introduced on 1st December 2004.
c45	No. premovement tests off-farm in 2004 2005	Number of premovement tests carried out before animal movement occurred (MTO) during 2004 2005. The requirement for premovement testing was introduced on 1st December 2004.
c83	No. post-movement tests in 2009	Number of movement tests carried out after animal movement occurred (MTI) during the current year.
c77	No. post-movement tests in 2008	Number of movement tests carried out after animal movement occurred (MTI) during 2008. The requirement for premovement testing was introduced on 1st December 2004.
c71	No. post-movement tests in 2007	Number of movement tests carried out after animal movement occurred (MTI) during 2007. The requirement for premovement testing was introduced on 1st December 2004.
c65	No. post-movement tests in 2006	Number of movement tests carried out after animal movement occurred (MTI) during 2006. The requirement for premovement testing was introduced on 1st December 2004.
c47	No. post-movement tests in 2004 2005	Number of movement tests carried out after animal movement occurred (MTI) during 2004 2005. The requirement for premovement testing was introduced on 1st December 2004.
c84	No. premovement animal tests off-farm in 2009	Number of premovement animal tests carried out before animal movement occurred (MTO) during the current year.
c78	No. premovement animal tests off-farm in 2008	Number of premovement animal tests carried out before animal movement occurred (MTO) during 2008.
c72	No. premovement animal tests off-farm in 2007	Number of premovement animal tests carried out before animal movement occurred (MTO) during 2007.
c66	No. premovement animal tests off-farm in 2006	Number of premovement animal tests carried out before animal movement occurred (MTO) during 2006.
c49	No. premovement animal tests off-farm in 2004 2005	Number of premovement animal tests carried out before animal movement occurred (MTO) during 2004 2005.
c86	No. post-movement animal tests in 2009	Number of movement animal tests carried out after animal movement occurred (MTI) during the current year.
c79	No. post-movement animal tests in 2008	Number of movement animal tests carried out after animal movement occurred (MTI) during 2008.
c73	No. post-movement animal tests in 2007	Number of movement animal tests carried out after animal movement occurred (MTI) during 2007.
c67	No. post-movement animal tests in 2006	Number of movement animal tests carried out after animal movement occurred (MTI) during 2006.
c51	No. post-movement animal tests in 2004 2005	Number of movement animal tests carried out after animal movement occurred (MTI) during 2004 2005.
c86	No. reactors detected by premovement tests 2009.	Number of BR serological reactors detected by premovement and post-movement testing during current year.
c80	No. reactors detected by premovement tests 2008.	Number of BR serological reactors detected by premovement and post-movement testing during 2008.
c74	No. reactors detected by premovement tests 2007.	Number of BR serological reactors detected by premovement and post-movement testing during 2007.
c68	No. reactors detected by premovement tests 2006	Number of BR serological reactors detected by premovement and post-movement testing during 2006.
c53	No. reactors detected by premovement tests 2004 2005	Number of BR serological reactors detected by premovement and post-movement testing during 2004 2005.
c87	No. inconclusives detected by premovement tests 2009	Number of BR serological inconclusive reactors detected by premovement and post-movement testing during the current year.
c81	No. inconclusives detected by premovement tests 2008	Number of BR serological inconclusive reactors detected by premovement and post-movement testing during the current year.
c75	No. inconclusives detected by premovement tests 2007	Number of BR serological inconclusive reactors detected by premovement and post-movement testing during 2007.
c69	No. inconclusives detected by premovement tests 2006	Number of BR serological inconclusive reactors detected by premovement and post-movement testing during 2006.
c55	No. inconclusives detected by premovement tests 2004 2005	Number of BR serological inconclusive reactors detected by premovement and post-movement testing during 2004 2005.
c57	Total pre-movement and post-movement tests	Total number of pre-movement and post-movement tests carried out since 1st December 2004.
c58	Total pre-movement and post-movement animal tests	Total number of pre-movement and post-movement animal tests carried out since 1st December 2004.
c59	Total BR reactors detected by movement tests	Total number of BR serological reactors detected by pre-movement and post-movement tests carried out since 1st December 2004.

c60 Total BR inconclusives detected by movement tests Total number of BR serological inconclusive reactors detected by pre-movement and post-movement tests carried out since 1st December 2004.

Explanatory Comments for Brucellosis Statistics - D. Results

D1	No. of herds with BR reactors during month	A herd is included in this figure if the herd number had a BR Blood test reactor during the above month.
D2	No. of new reactor herds during month	A herd is defined as being a Br reactor herd if it had at least one Br reactor animal in that month and no Br reactor animals during the previous 12 months.
D3	No. of new reactor herds since start of year	= Since 1st January
D4	No. of new reactor herds in the previous 12 months	Last 12 month period from the above month.
D26	No. of new reactor herds in previous 13-24 months	Last 13-24 month period from the above month.
D5	No. of BR reactor animals during month	A Br reactor animal is defined as an animal where the manual interpretation field for a blood test is positive ('P') with the first test date being taken as the time at which the animal became a reactor.
D6	No. of BR reactor animals since start of year	= Since 1st January
D7	No. of reactor animals in the previous 12 months	Last 12 month period from the above month.
D27	No. of reactor animals in previous 13-24 months	Last 13-24 month period from the above month.
D8	Herd Prevalence (%)	Number of herds with a Br serological reactor during the above month as a proportion of cattle herds which have presented cattle for a Br herd test during the same time period.
D20	Cumulative herd incidence during 2006 (%)	Number of NEW reactor herds since the start of the calendar year as a proportion of cattle herds which have presented cattle for a Br herd test during the same time period.
D9	Annual herd incidence over the last 12 months (%)	Number of NEW reactor herds during the last 12 months as a proportion of cattle herds which have presented cattle for a Br herd test during the same time period.
D28	Annual herd incidence over the last 13-24 months (%)	Number of NEW reactor herds during the last 13-24 months as a proportion of cattle herds which have presented cattle for a Br herd test during the same time period.
D10	2007 Herd Incidence (%)	Number of NEW reactor herds during the calendar year as proportion of cattle herds which have presented cattle for a Br herd test during the same time period.
D11	2006 Herd Incidence (%)	Number of NEW reactor herds during the calendar year as proportion of cattle herds which have presented cattle for a Br herd test during the same time period.
D44	2005 Incidence(%)	Number of NEW reactor herds during the calendar year as proportion of cattle herds which have presented cattle for a Br herd test during the same time period.
D29	2004 Incidence(%)	Number of NEW reactor herds during the calendar year as proportion of cattle herds which have presented cattle for a Br herd test during the same time period.
D15	2008 Herd Incidence (%)	Number of NEW reactor herds during the calendar year as proportion of cattle herds which have presented cattle for a Br herd test during the same time period.
D21	Cumulative animal incidence during 2006 (%)	Number of BR reactor animals since the start of the calendar year divided by the number of cattle tested for Br within the same time period
D12	Annual animal incidence over the last 12 months (%)	Number of Br reactor animals over the last 12 months divided by the number of cattle tested for Br within the same time period.
D30	Annual animal incidence over the last 13-24 months (%)	Number of Br reactor animals over the last 13-24 months divided by the number of cattle tested for Br within the same time period.
D13	2007 Animal Incidence (%)	Number of Br reactor animals during the calendar year divided by the number of cattle tested for Br within the same time period.
D14	2006 Animal Incidence (%)	Number of Br reactor animals during the calendar year divided by the number of cattle tested for Br within the same time period.
D45	2005 Animal Incidence (%)	Number of Br reactor animals during the calendar year divided by the number of cattle tested for Br within the same time period.
D31	2004 Animal Incidence (%)	Number of Br reactor animals during the calendar year divided by the number of cattle tested for Br within the same time period.
D16	2008 Animal Incidence (%)	Number of Br reactor animals during the calendar year divided by the number of cattle tested for Br within the same time period.

d33	APT during current month	= The reactor disclosure rate per 1,000 animal blood tests during current month.
D22	APT since start of year	The reactor disclosure rate per 1,000 animal blood tests since the start of the calendar year.
D17	Current 12 month moving average APT	The reactor disclosure rate per 1,000 animal blood tests. Current refers to the rate over the last 12 months.
D19	2007 APT	The reactor disclosure rate per 1,000 animal blood tests during the calendar year.
D51	2006 APT	The reactor disclosure rate per 1,000 animal blood tests during the calendar year.
D46	2005 APT	The reactor disclosure rate per 1,000 animal blood tests during the calendar year.
d32	2004 APT	The reactor disclosure rate per 1,000 animal blood tests during the calendar year.
D18	2008 APT	The reactor disclosure rate per 1,000 animal blood tests during the calendar year.
D23	No. negative in contacts since start of year	Number of animals taken as negative in contacts since the start of the year
d73	No. Negative in contacts over last 12 months (%)	= Number of negative in contacts during the last 12 months
D25	No. negative in contacts during 2007	Number of animals taken as negative in contacts during the calendar year
D52	No. negative in contacts during 2006	Number of animals taken as negative in contacts during the calendar year
D47	No. negative in contacts during 2005	Number of animals taken as negative in contacts during the calendar year
D34	No. negative in contacts during 2004	Number of animals taken as negative in contacts during the calendar year
D24	No. negative in contacts during 2008	Number of animals taken as negative in contacts during the calendar year
D37	Reactor removal time 2008	Figures given are median values for working days estimated from calendar days (calendar days multiplied by 0.685). Reactors which are not yet slaughtered or where they they were first declared as reactors at slaughter are excluded.
D50	Reactor removal time 2006	Figures given are median values for working days estimated from calendar days (calendar days multiplied by 0.685). Reactors which are not yet slaughtered or where they they were first declared as reactors at slaughter are excluded.
D35	Reactor removal time 2005	Figures given are median values for working days estimated from calendar days (calendar days multiplied by 0.685). Reactors which are not yet slaughtered or where they they were first declared as reactors at slaughter are excluded.
D36	Reactor removal time 2004	Figures given are median values for working days estimated from calendar days (calendar days multiplied by 0.685). Reactors which are not yet slaughtered or where they they were first declared as reactors at slaughter are excluded.
D38	Herds with infection confirmed this year	Herds where samples have been subjected to culture for <i>Brucella abortus</i> and where the infection was confirmed.
D39	Herds with infection not confirmed this year	Herds where samples have been subjected to culture for <i>Brucella abortus</i> and where the infection was NOT confirmed within the same calendar year.
D40	% Herds with infection confirmed this year	Percentage of herds where samples have been subjected to culture for <i>Brucella abortus</i> which were found to be positive for infection divided by the total number of herds where samples have been subjected to culture for <i>Brucella abortus</i> .
D56	% Herds with infection confirmed 2008	Percentage of herds where samples have been subjected to culture for <i>Brucella abortus</i> which were found to be positive for infection divided by the total number of herds where samples have been subjected to culture for <i>Brucella abortus</i> during the calendar year
D56	% Herds with infection confirmed 2007	Percentage of herds where samples have been subjected to culture for <i>Brucella abortus</i> which were found to be positive for infection divided by the total number of herds where samples have been subjected to culture for <i>Brucella abortus</i> during the calendar year
D53	% Herds with infection confirmed 2006	Percentage of herds where samples have been subjected to culture for <i>Brucella abortus</i> which were found to be positive for infection divided by the total number of herds where samples have been subjected to culture for <i>Brucella abortus</i> during the calendar year
D48	% Herds with infection confirmed 2005	Percentage of herds where samples have been subjected to culture for <i>Brucella abortus</i> which were found to be positive for infection divided by the total number of herds where samples have been subjected to culture for <i>Brucella abortus</i> during the calendar year
d68	Reactor animals with infection confirmed 2008	Animals where samples have been subjected to culture for <i>Brucella abortus</i> and where the infection was confirmed.

D42	Reactor animals with infection not confirmed this year	Animals where samples have been subjected to culture for <i>Brucella abortus</i> and where the infection was NOT confirmed.
D43	% Reactor animals with infection confirmed this year	Percentage of animals where samples have been subjected to culture for <i>Brucella abortus</i> which were found to be positive for infection divided by the total number of animals where samples have been subjected to culture for <i>Brucella abortus</i> .
D69	% Reactor animals with infection confirmed in 2008	Percentage of reactor animals where samples have been subjected to culture for <i>Brucella abortus</i> which were found to be positive for infection divided by the total number of animals where samples have been subjected to culture for <i>Brucella abortus</i> during the calendar year
D57	% Reactor animals with infection confirmed in 2007	Percentage of reactor animals where samples have been subjected to culture for <i>Brucella abortus</i> which were found to be positive for infection divided by the total number of animals where samples have been subjected to culture for <i>Brucella abortus</i> during the calendar year
D54	% Reactor animals with infection confirmed in 2006	Percentage of reactor animals where samples have been subjected to culture for <i>Brucella abortus</i> which were found to be positive for infection divided by the total number of animals where samples have been subjected to culture for <i>Brucella abortus</i> during the calendar year
D49	% Reactor animals with infection confirmed in 2005	Percentage of reactor animals where samples have been subjected to culture for <i>Brucella abortus</i> which were found to be positive for infection divided by the total number of animals where samples have been subjected to culture for <i>Brucella abortus</i> during the calendar year
D58	No. of new BR herd breakdowns during current year which were confirmed by bacteriological culture	The number of new BR herd breakdowns during the current year where <i>Brucella abortus</i> was cultured.
d66	No. of new BR herd breakdowns during last 12 months which were confirmed by bacteriological culture	The number of new BR herd breakdowns during the last 12 months where <i>Brucella abortus</i> was cultured.
D59	No. of new BR herd breakdowns during 2007 confirmed by bacteriological culture	The number of new BR herd breakdowns during the calendar year where <i>Brucella abortus</i> was cultured
D60	No. of new BR herd breakdowns during 2006 confirmed by bacteriological culture	The number of new BR herd breakdowns during the calendar year where <i>Brucella abortus</i> was cultured
D61	No. of new BR herd breakdowns during 2005 confirmed by bacteriological culture	The number of new BR herd breakdowns during the calendar year where <i>Brucella abortus</i> was cultured
d62	Cumulative culture confirmed herd incidence for 2008 (%)	The number of new BR herd breakdowns during the current year where <i>Brucella abortus</i> was cultured divided by the number of herds with cattle that were tested for brucellosis during the same time period expressed as a percentage