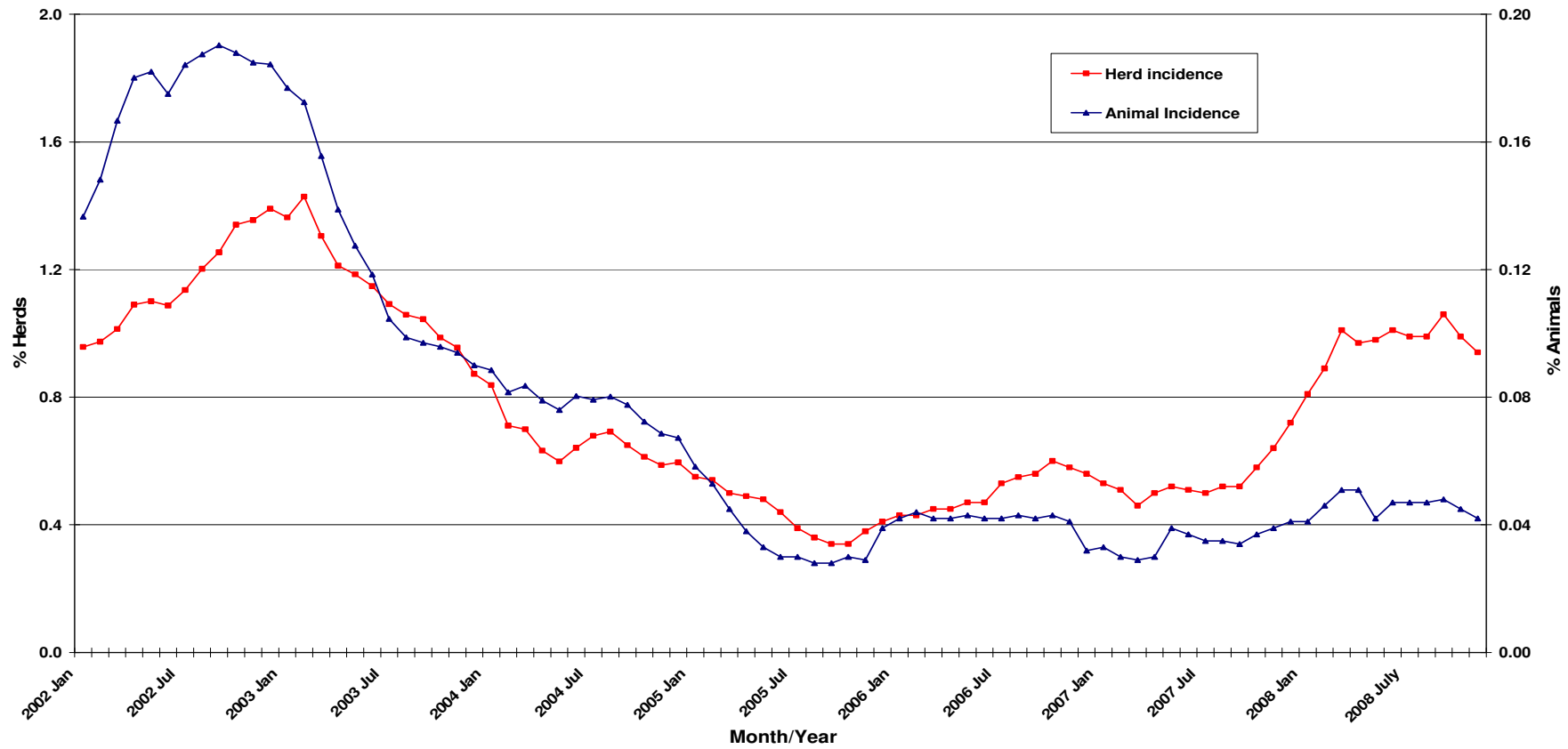


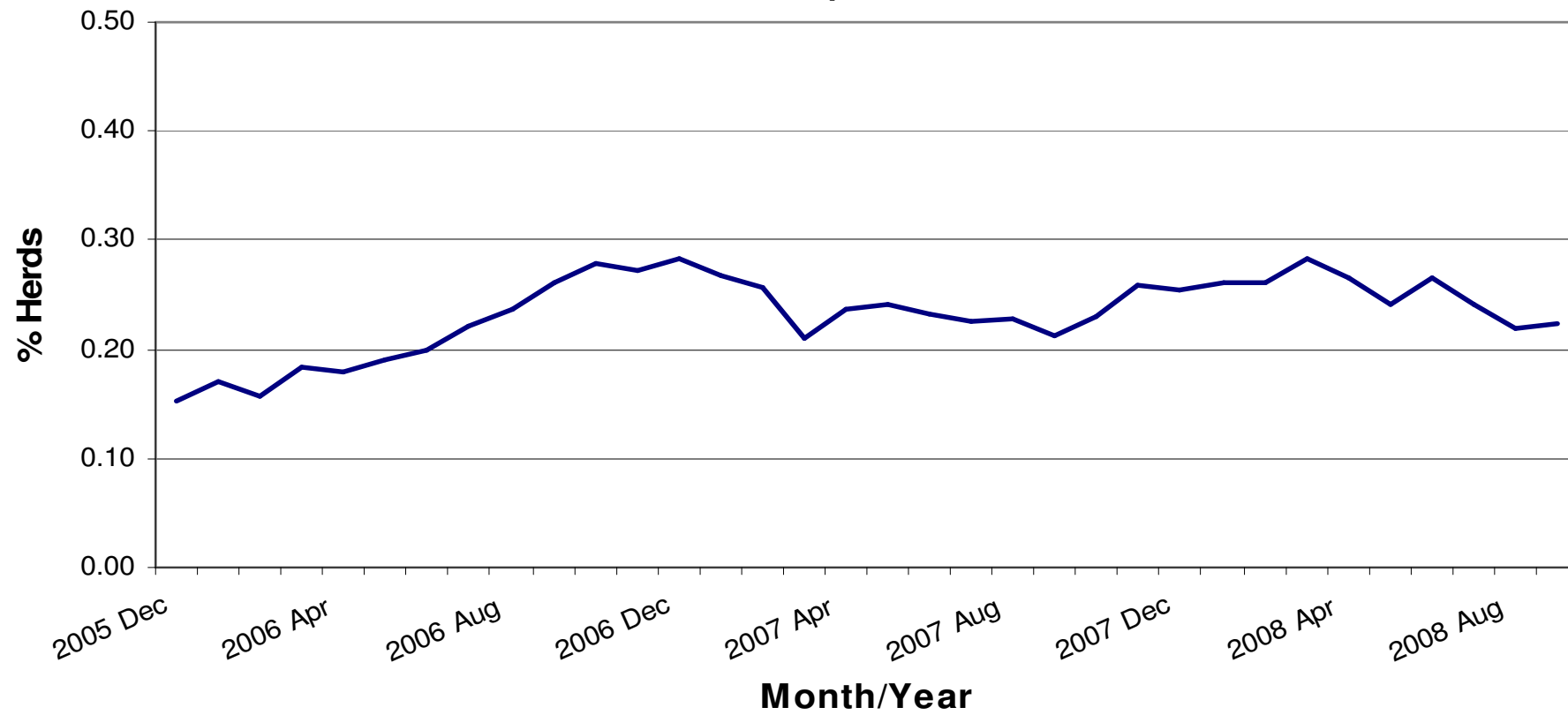
Brucellosis: Statistics for November 2008

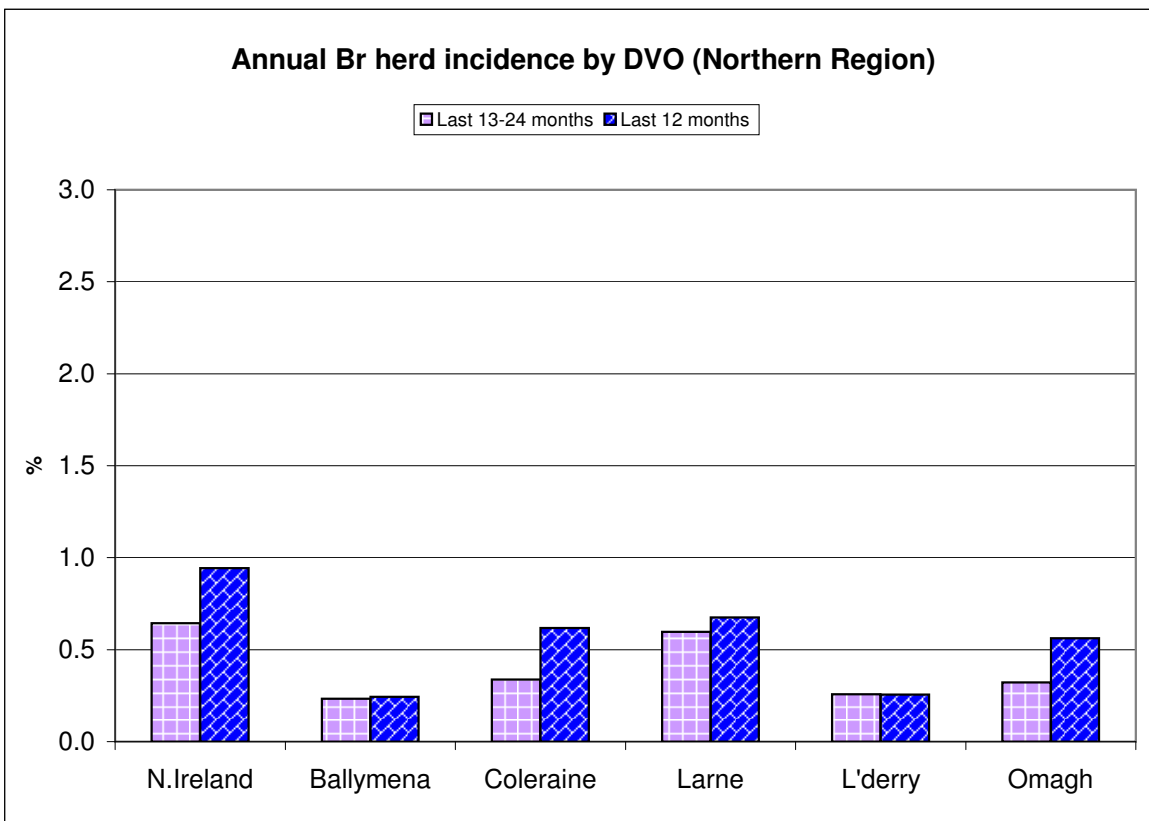
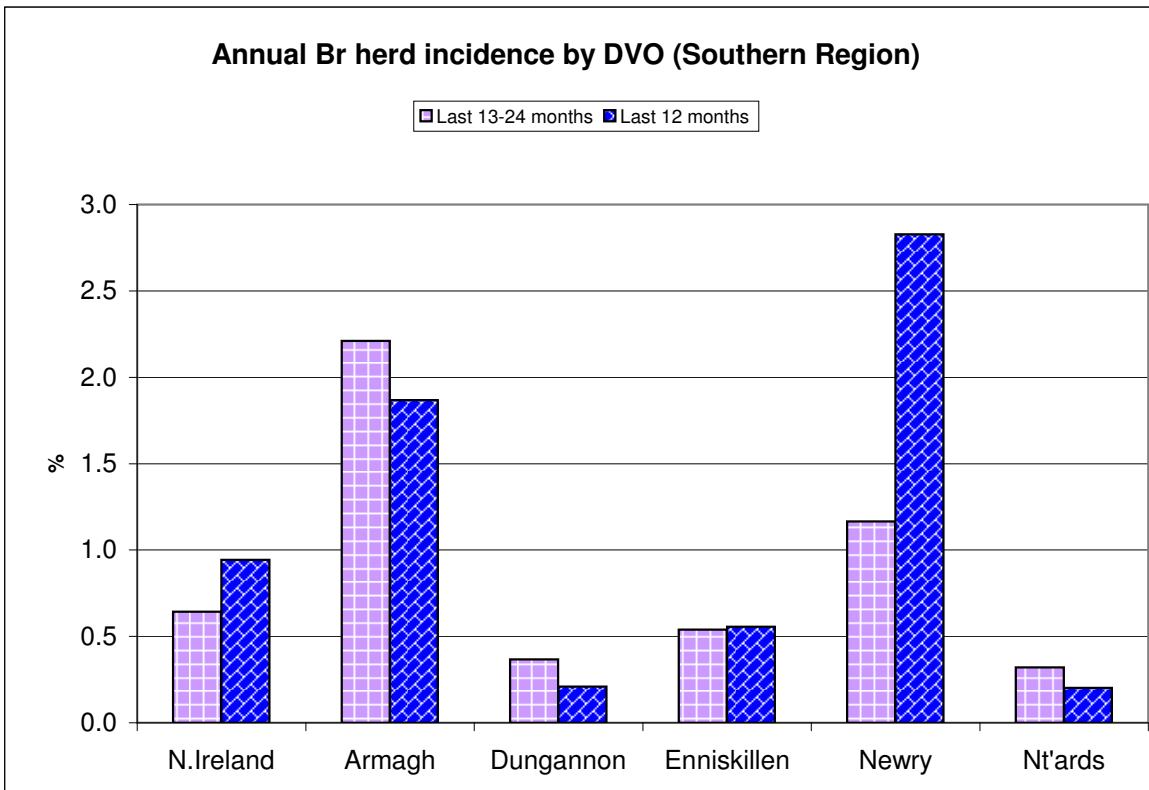
Tests Completed	Herds	Number of herds tested (any test), by DVO	Cumulative Statistics	
		Number of herds with herd-level test, by DVO	Cumulative Statistics	
		Number of herds with any risk test, by DVO		
		Number of herds with herd-level risk test, by DVO		
		Number of herds with herd-level restricted test, by DVO		
		Number of herds monitored by BME or blood sampling	Number of herds monitored by BME alone	
	Animals	Total number of tests performed, by DVO	Cumulative Statistics	Premovement testing
		Total number of animals tests, by DVO	Cumulative Statistics	
		Total number of restricted herd tests, by DVO	Number of animals tested	
		Total number of herd tests, by DVO	Number of animals tested	
Total number of individual tests, by DVO		Number of animals tested		
Total number of CTA tests, by DVO		Number of animals tested		
Total number of CTT tests, by DVO		Number of animals tested		
Total number of animals tested, by DVO				
	Current total animals under Br surveillance	Number of animals tested by BME alone		
Summary Statistics	Herds with Br reactors during month, by DVO	Cumulative Statistics	APT	
	Number of new reactor herds, by DVO	Cumulative Statistics	Negative-in-contacts	
	Number of new reactor animals, by DVO		Reactor removal times	
	Herd Prevalance		Confirmed infection	
	Herd Incidence			
	Animal Incidence			
	Number of reactor animals by month and by DVO			
	Number of new reactor herds by month and by DVO			
	Total number of all reactor herds in 2003, by DVO			
	Summary Charts	Current Animal Incidence Charts	Monthly BR reactors chart	
Yearly Animal Incidence Charts		BR new herd breakdowns chart		
Current Herd Incidence Charts		BR herd & animal incidence		
Yearly Herd Incidence Charts				

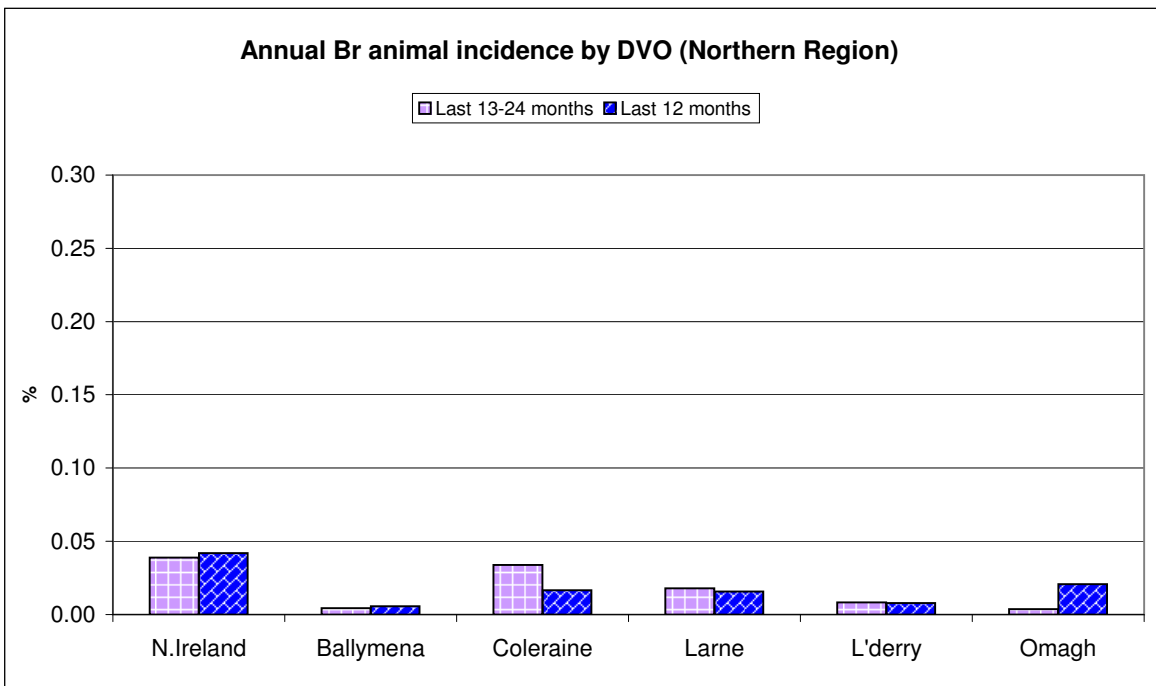
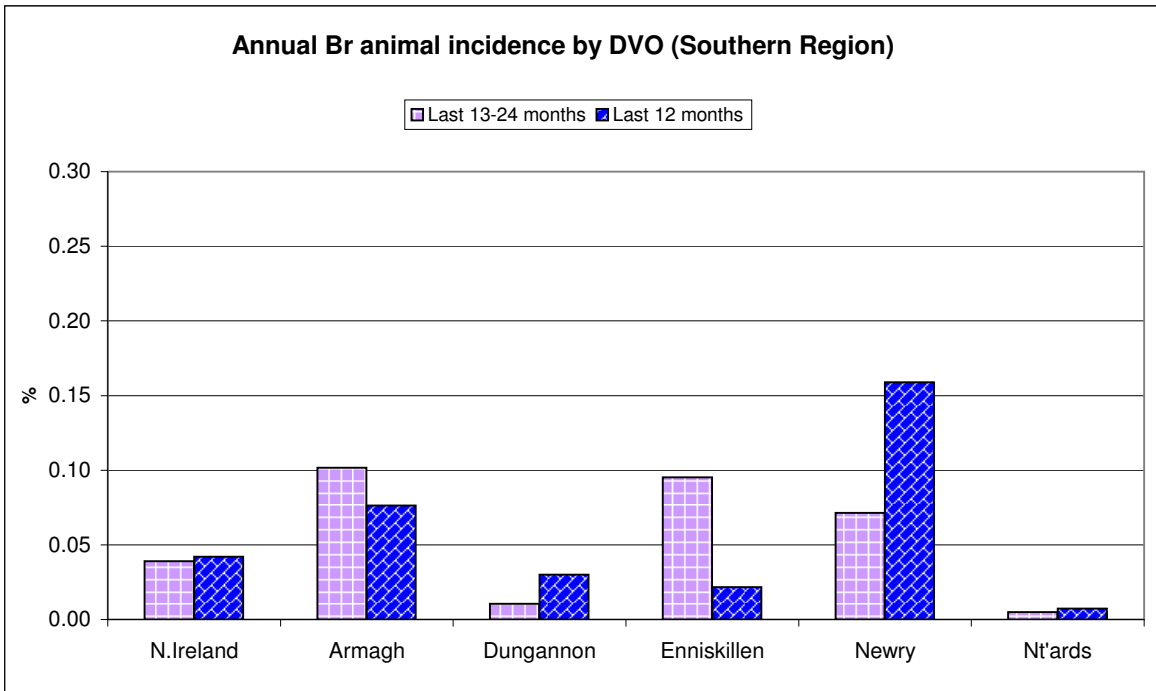
BR Herd and Animal Incidence
(12 month moving average: January 2002 to November 2008)



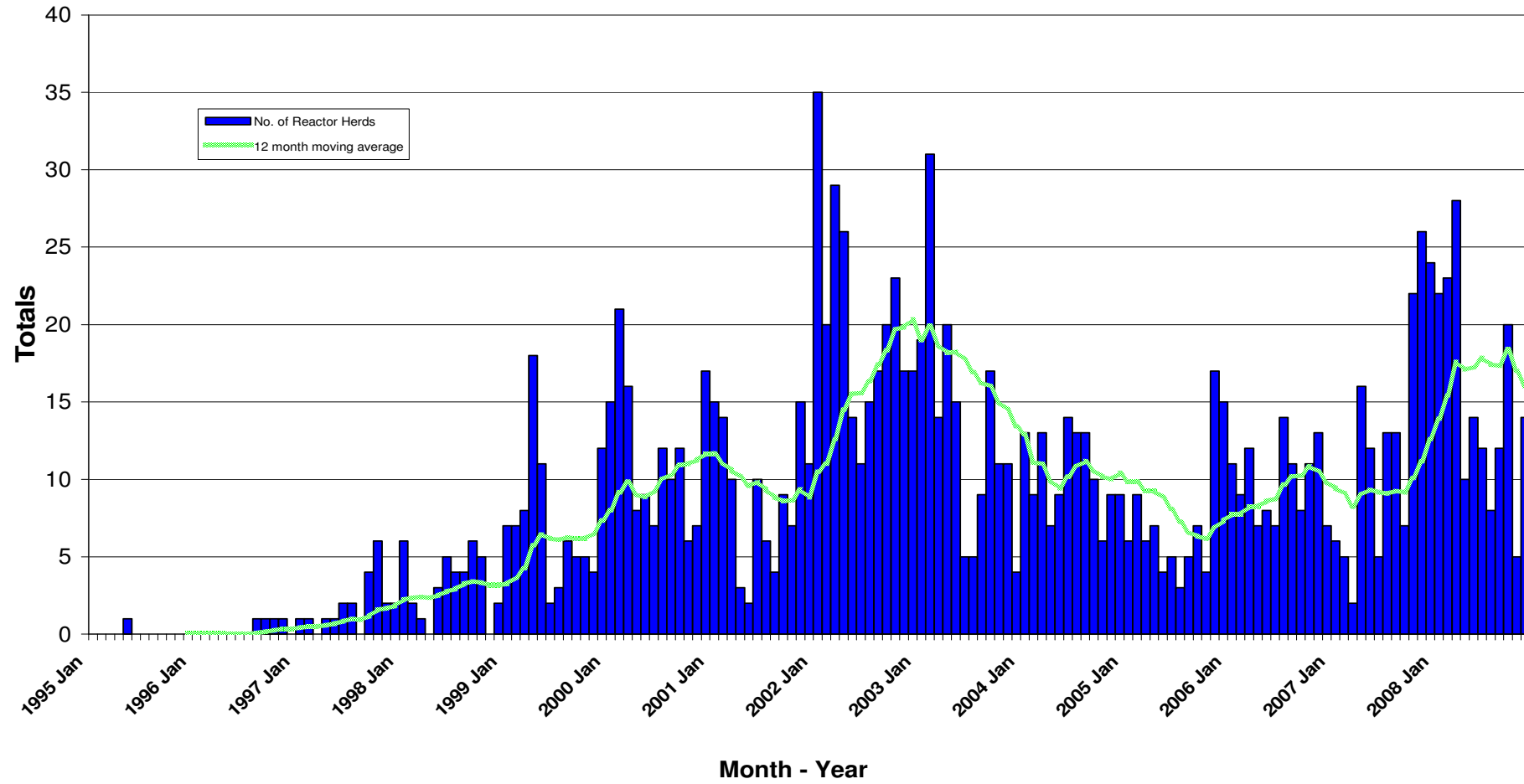
BR annual herd incidence where infection confirmed by culture: December 2005 to September 2008



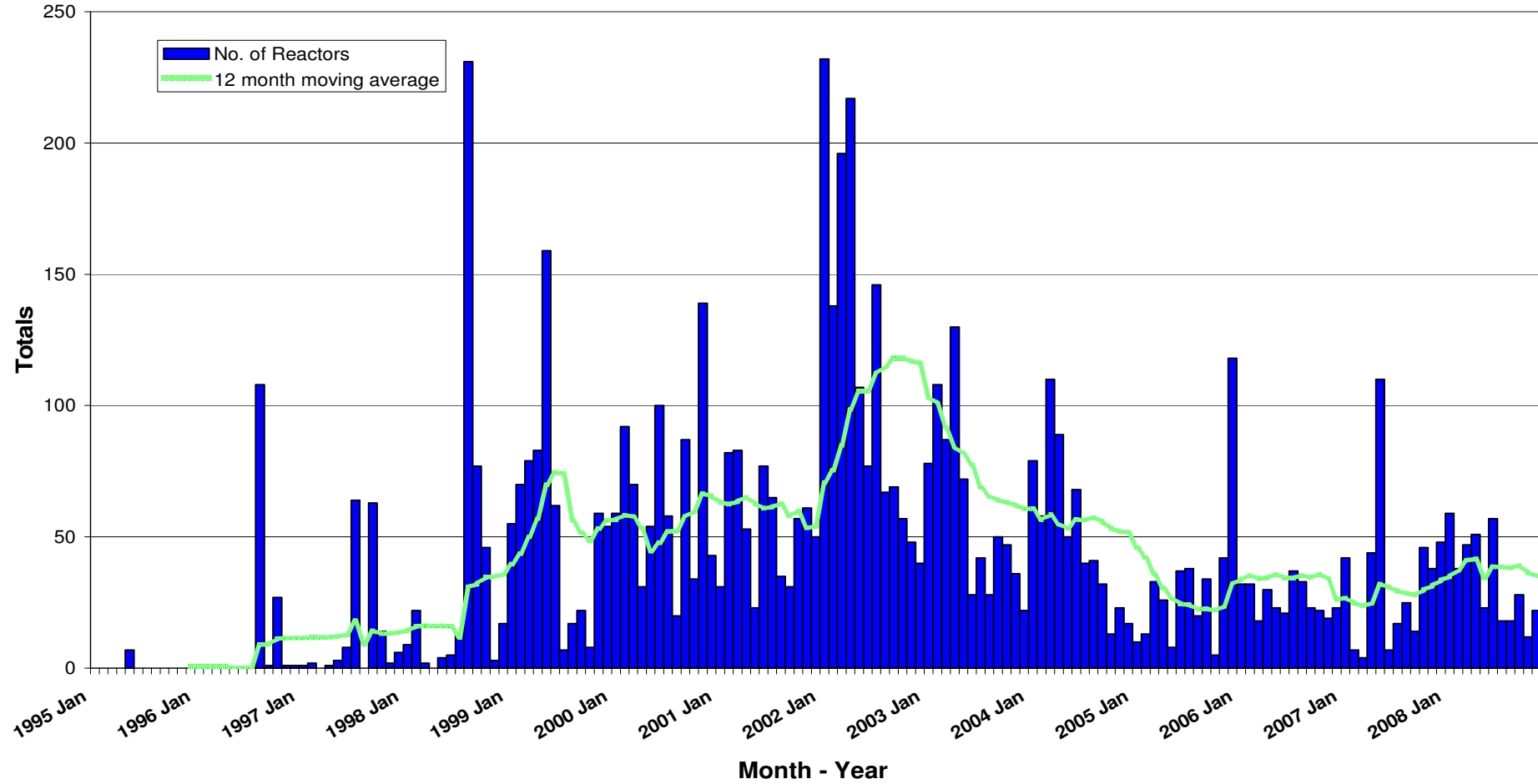


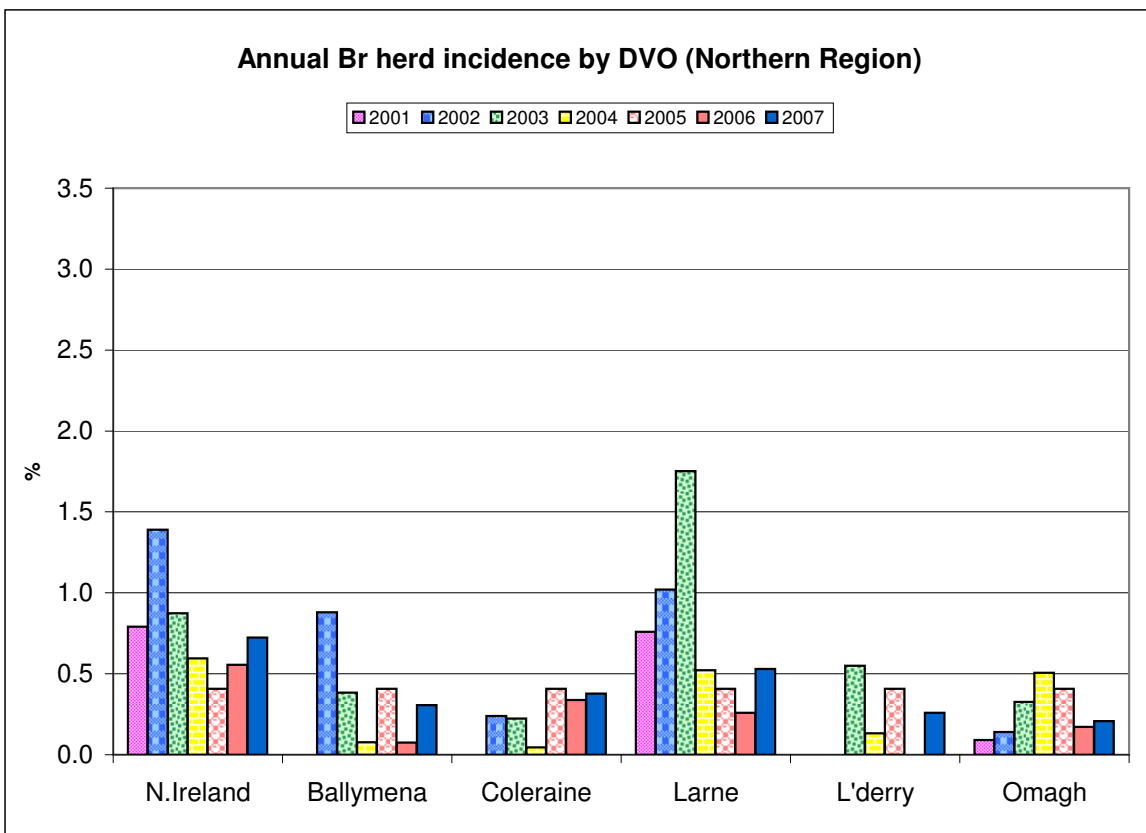
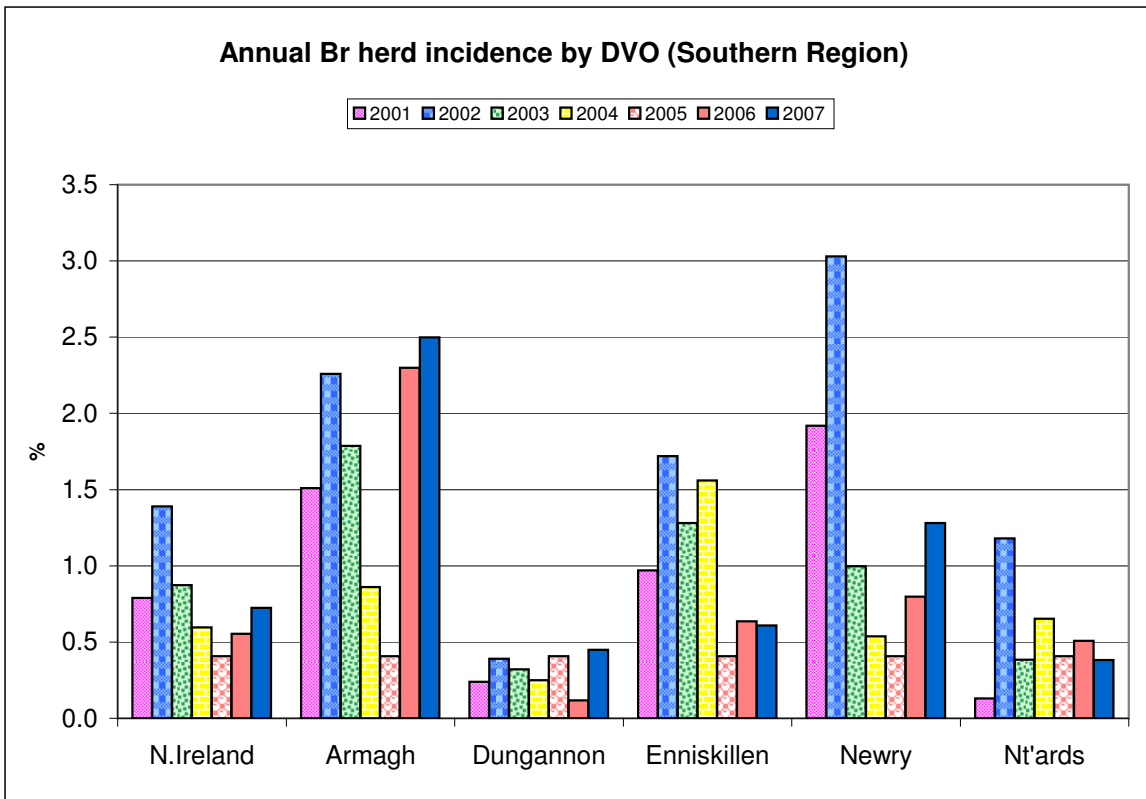


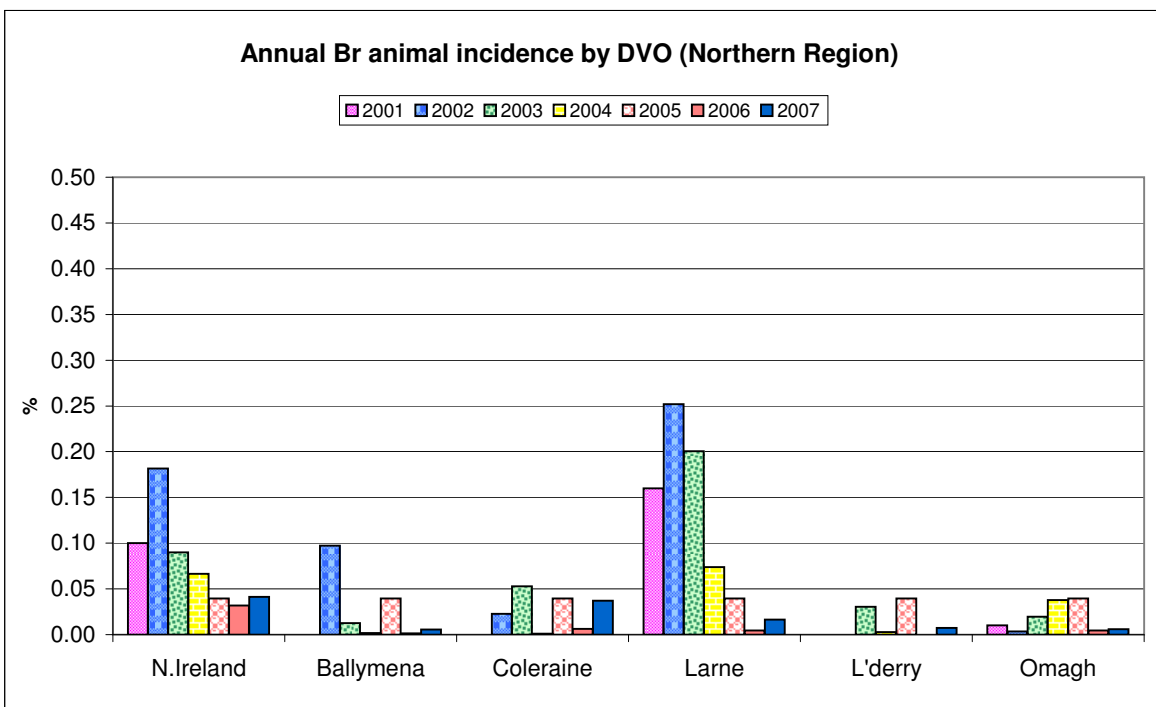
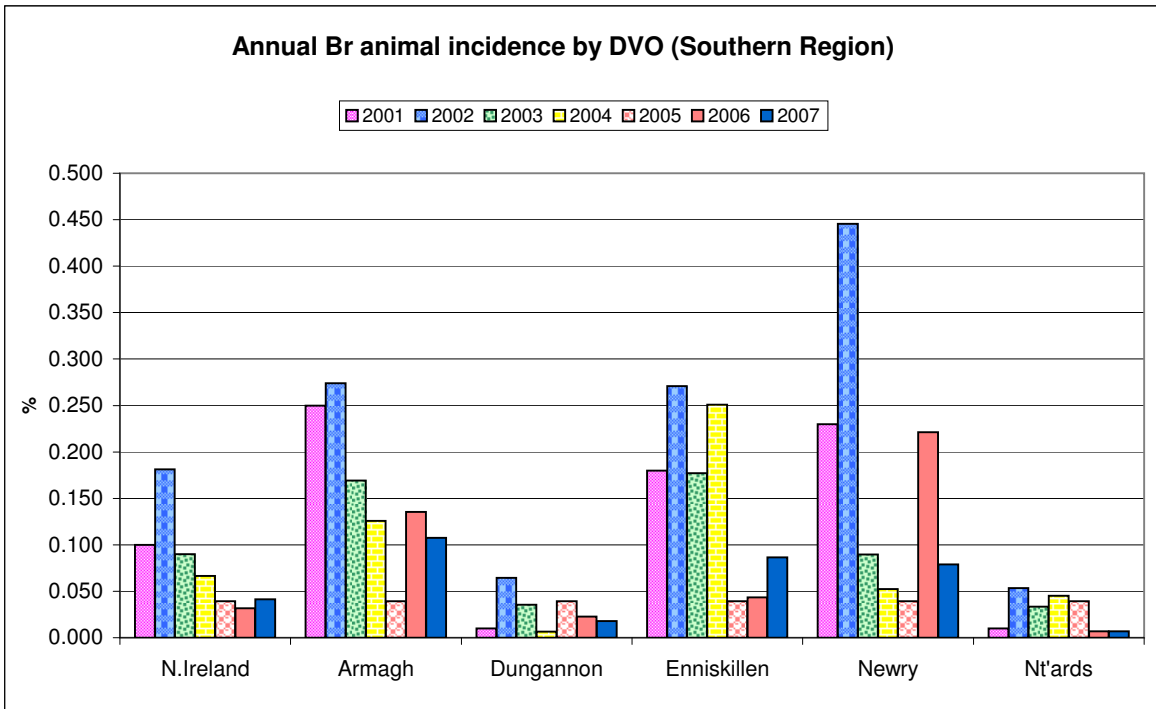
New BR Reactor Herds: January 1995 to November 2008



BR Reactors: January 1995 to November 2008







Month = November 2008

Ref.	Total	Armagh	Ballymena	Coleraine	Dungannon	Enniskillen	Larne	L'derry	Newry	Nt'ards	Omagh	
d1	No. of herds with Br reactors during month	17	2	1	0	0	1	1	0	8	2	2
d2	No. of new reactor herds during month	14	1	1	0	0	1	1	0	7	1	2
d3	No. of new reactor herds since start of year	168	27	2	12	3	13	9	2	84	2	14
d4	No. of new reactor herds in the previous 12 months	192	34	3	14	5	16	10	2	89	3	16
d26	No. of new reactor herds in previous 13-24 months	134	41	3	8	9	16	9	2	37	5	4
d5	No. of Br reactor animals during month	22	2	2	0	0	1	1	0	10	4	2
d6	No. of Br reactor animals since start of year	355	63	3	15	23	17	13	3	188	5	25
d7	No. of reactor animals in the previous 12 months	403	71	4	21	31	24	14	3	200	7	28
d27	No. of reactor animals in previous 13-24 months	377	93	3	44	11	107	16	3	90	5	5
d8	Herd Prevalence (%)	0.81	0.78	1.06	0.00	0.00	0.26	0.40	0.00	2.28	2.33	0.51
d20	Cumulative herd incidence this year (%)	0.88	1.54	0.18	0.56	0.13	0.48	0.67	0.27	2.75	0.14	0.52
d9	Annual herd incidence over the last 12 months (%)	0.94	1.87	0.24	0.62	0.21	0.56	0.68	0.26	2.83	0.20	0.56
d28	Annual herd incidence over the last 13-24 months (%)	0.64	2.21	0.23	0.34	0.37	0.54	0.60	0.26	1.17	1.17	0.32
d10	2007 Herd Incidence (%)	0.72	2.50	0.31	0.38	0.45	0.61	0.53	0.26	1.28	0.38	0.21
d11	2006 Herd Incidence (%)	0.56	2.30	0.07	0.34	0.12	0.64	0.26	0.00	0.80	0.51	0.17
d44	2005 Herd Incidence (%)	0.41	0.32	0.22	0.21	0.27	0.91	0.38	0.24	0.55	0.18	0.33
d29	2004 Herd Incidence (%)	0.60	0.86	0.08	0.04	0.25	1.56	0.52	0.13	0.54	0.65	0.51
d15	2003 Herd Incidence (%)	0.87	1.79	0.38	0.22	0.32	1.28	1.75	0.55	1.00	0.38	0.33
d21	Cumulative animal incidence this year (%)	0.039	0.070	0.005	0.012	0.023	0.016	0.016	0.008	0.154	0.005	0.019
d12	Annual animal incidence over last 12 months (%)	0.042	0.076	0.006	0.016	0.030	0.022	0.016	0.008	0.159	0.007	0.021
d30	Annual animal incidence over last 13-24 months (%)	0.039	0.102	0.004	0.034	0.010	0.095	0.018	0.008	0.071	0.005	0.004
d13	2007 Animal Incidence (%)	0.041	0.107	0.006	0.037	0.018	0.086	0.016	0.008	0.079	0.007	0.006
d14	2006 Animal Incidence (%)	0.032	0.135	0.001	0.006	0.023	0.043	0.004	0.000	0.221	0.007	0.004
d45	2005 Animal Incidence (%)	0.039	0.105	0.004	0.004	0.008	0.179	0.009	0.005	0.031	0.006	0.009
d31	2004 Animal Incidence (%)	0.067	0.126	0.002	0.001	0.007	0.251	0.074	0.003	0.052	0.045	0.038
d16	2003 Animal Incidence (%)	0.090	0.169	0.013	0.053	0.035	0.177	0.201	0.030	0.090	0.033	0.019

d33	APT during current month	0.12	0.14	0.10	0.00	0.00	0.06	0.07	0.00	0.43	0.15	0.10
d22	APT since start of year	0.30	0.42	0.04	0.12	0.20	0.11	0.14	0.07	0.99	0.05	0.16
d17	Current 12 month moving average APT	0.30	0.43	0.05	0.15	0.25	0.14	0.13	0.06	0.97	0.06	0.16
d19	2007 APT	0.32	0.60	0.05	0.35	0.16	0.60	0.14	0.08	0.57	0.06	0.05
d51	2006 APT	0.24	0.81	0.01	0.06	0.19	0.28	0.04	0.00	0.45	0.07	0.04
d46	2005 APT	0.31	0.77	0.04	0.04	0.07	1.05	0.07	0.05	0.23	0.05	0.07
d32	2004 APT	0.50	0.70	0.02	0.01	0.06	1.49	0.55	0.03	0.35	0.38	0.29
d18	2003 APT	0.66	0.91	0.11	0.52	0.35	1.13	1.50	0.28	0.50	0.29	0.18
d23	No. negative in contacts since start of year	5031	837	5	49	1000	365	6	95	2357	2	315
d25	No. negative in contacts during 2007	6183	1300	2	1187	183	765	698	1	1972	4	71
d52	No. negative in contacts during 2006	4673	2888	1	3	116	416	0	8	1241	0	0
d47	No. negative in contacts during 2005	2580	46	1	3	205	1314	82	0	313	237	379
d34	No. negative in contacts during 2004	6035	1428	1	5	64	1984	1043	3	894	242	371
d24	No. negative in contacts during 2003	10798	2129	314	389	389	2085	2991	105	1616	719	61
d37	Reactor removal time 2008	14.4										
d55	Reactor removal time 2007	12.3	12.3	14.4	11.6	12.3	14.4	12.3	13.0	11.0	11.0	10.3
d50	Reactor removal time 2006	12.3	13.0	8.9	14.3	8.9	15.0	11.9	0.0	10.9	11.6	11.9
d35	Reactor removal time 2005	14.4	19.7	11.0	13.7	8.9	13.0	11.3	12.1	10.3	9.6	11.9
d36	Reactor removal time 2004	14.4	12.3	9.0	20.6	18.1	15.1	11.0	8.2	14.4	19.2	17.8
d38	Reactor herds with infection confirmed this year	36	8	0	2	1	4	1	1	17	0	2
d39	Reactor herds with infection not confirmed this year	139	19	1	11	4	8	8	2	72	2	12
d40	% Reactor herds with infection confirmed this year	20.6	29.6	0.0	15.4	20.0	33.3	11.1	33.3	19.1	0.0	14.3
d56	% Reactor herds with infection confirmed in 2007	37.1	17.4	0.0	37.5	36.4	80.0	44.4	0.0	52.6	0.0	14.3
d53	% Reactor herds with infection confirmed in 2006	54.1	75.6	0.0	0.0	66.7	66.7	25.0	0.0	53.8	0.0	0.0
d48	% Reactor herds with infection confirmed in 2005	45.2	100.0	0.0	0.0	0.0	73.3	33.3	0.0	40.0	50.0	45.5
d41	Reactor animals with infection confirmed	72	14	0	2	5	9	1	1	37	0	3
d42	Reactor animals with infection not confirmed	180	26	1	12	5	10	11	2	95	4	14
d43	% Reactor animals with infection confirmed	28.6	35.0	0.0	14.3	50.0	47.4	8.3	33.3	28.0	0.0	17.6
d57	% Reactor animals with infection confirmed in 2007	41.6	25.0	0.0	28.6	50.0	75.0	54.5	0.0	46.7	0.0	12.5
d54	% Reactor animals with infection confirmed in 2006	64.1	78.5	0.0	0.0	80.0	75.0	25.0	0.0	60.5	0.0	0.0
d49	% Reactor animals with infection confirmed in 2005	58.3	100.0	0.0	0.0	0.0	79.7	50.0	0.0	47.6	60.0	45.5

d58	No. of new BR herd breakdowns during current year which were confirmed by bacteriological culture	30	5	0	2	0	5	1	1	14	0	2
d66	No. of new BR herd breakdowns during last 12 months which were confirmed by bacteriological culture	47	5	0	3	2	11	2	1	21	0	2
d59	No. of new BR herd breakdowns during 2007 confirmed by bacteriological culture	53	9	0	3	4	14	3	0	19	0	1
d60	No. of new BR herd breakdowns during 2006 confirmed by bacteriological culture	60	31	0	0	2	11	1	0	15	0	0
d61	No. of new BR herd breakdowns during 2005 confirmed by bacteriological culture	33	2	0	0	0	20	2	0	5	1	3
d62	Cumulative culture confirmed herd incidence for 2008 (%)	0.16	0.28	0.00	0.09	0.00	0.19	0.07	0.14	0.46	0.00	0.07
d67	Culture confirmed herd incidence for last 12 months (%)	0.23	0.27	0.00	0.13	0.08	0.38	0.14	0.13	0.67	0.00	0.07
d63	Culture confirmed herd incidence 2007 (%)	0.25	0.49	0.00	0.13	0.16	0.47	0.20	0.00	0.59	0.00	0.03
d64	Culture confirmed herd incidence 2006 (%)	0.28	1.62	0.00	0.00	0.08	0.37	0.06	0.00	0.46	0.00	0.00
d65	Culture confirmed herd incidence 2005 (%)	0.15	0.11	0.00	0.00	0.00	0.65	0.13	0.00	0.15	0.06	0.10

Brucellosis: number of reactor herds by month and by DVO in 2008 and unique herd breakdowns during the year

2008	DVO_CODE											Total	
	Year	Month	Armagh	Ballymena	Coleraine	Dungannon	Enniskillen	Larne	L'Derry	Newry	Nt'Ards		Omagh
2008	1	5	0	2	0	0	1	0	0	13	0	1	22
2008	2	3	0	0	0	0	2	4	1	10	0	3	23
2008	3	8	0	2	0	0	3	0	1	13	0	1	28
2008	4	0	0	2	1	2	1	0	0	2	0	2	10
2008	5	2	0	1	0	0	0	0	0	10	0	1	14
2008	6	3	0	0	0	0	0	0	0	9	0	0	12
2008	7	1	0	1	0	0	1	0	0	5	0	0	8
2008	8	1	0	1	1	1	1	1	0	5	1	1	12
2008	9	3	1	3	1	2	2	0	0	6	0	2	20
2008	10	0	0	0	0	0	0	0	0	4	0	1	5
2008	11	1	1	0	0	0	1	1	0	7	1	2	14
2008	12												0
Total		27	2	12	3	13	9	2	84	2	14	168	

Unique Herd Breakdowns		DVO_CODE											Total Herds
Year	Armagh	Ballymena	Coleraine	Dungannon	Enniskillen	Larne	L'Derry	Newry	Nt'Ards	Omagh			
2008	28	2	13	5	14	10	3	92	2	14	183		

Brucellosis: number of reactor herds by month and by DVO in 2007 and unique herd breakdowns during the year

2007	DVO_CODE											Total	
	Year	Month	Armagh	Ballymena	Coleraine	Dungannon	Enniskillen	Larne	L'Derry	Newry	Nt'Ards		Omagh
2007	1	2	0	0	0	0	2	0	0	1	1	0	6
2007	2	2	0	0	0	0	0	0	0	2	1	0	5
2007	3	1	0	0	0	0	0	0	0	1	0	0	2
2007	4	4	0	0	3	3	3	0	0	3	0	0	16
2007	5	6	0	2	0	0	0	0	0	3	1	0	12
2007	6	3	0	0	0	0	1	0	1	0	0	0	5
2007	7	2	0	1	2	2	0	0	0	5	0	1	13
2007	8	5	0	0	1	0	0	0	0	6	0	1	13
2007	9	5	0	0	0	0	1	0	0	1	0	0	7
2007	10	5	1	2	1	3	2	0	0	6	1	1	22
2007	11	4	2	2	2	3	2	1	1	8	1	1	26
2007	12	7	1	2	2	3	1	0	0	5	1	2	24
Total		46	4	9	11	18	8	2	41	6	6	151	

Unique Herd Breakdowns		DVO_CODE											Total Herds
Year	Armagh	Ballymena	Coleraine	Dungannon	Enniskillen	Larne	L'Derry	Newry	Nt'Ards	Omagh			
	47	4	9	11	20	9	2	42	6	7	157		

Brucellosis: number of reactor herds by month and by DVO in 2006 and unique herd breakdowns during the year

2006	DVO_CODE											Total	
	Year	Month	Armagh	Ballymena	Coleraine	Dungannon	Enniskillen	Larne	L'Derry	Newry	Nt'Ards		Omagh
2006	1	7	0	0	0	0	1	0	0	3	0	0	11
2006	2	2	0	1	0	0	1	0	0	4	1	0	9
2006	3	6	0	0	0	0	2	0	0	4	0	0	12
2006	4	4	0	1	0	0	1	0	0	0	1	0	7
2006	5	1	0	0	0	0	3	0	0	3	1	0	8
2006	6	3	0	0	0	0	1	0	0	1	1	1	7
2006	7	6	0	1	0	0	2	0	0	3	1	1	14
2006	8	6	0	0	0	0	2	0	0	2	1	0	11
2006	9	1	0	0	1	1	4	0	0	2	0	0	8
2006	10	3	0	1	2	0	0	0	0	2	1	2	11
2006	11	3	1	3	0	0	1	2	0	1	1	1	13
2006	12	2	0	1	0	0	1	2	0	1	0	0	7
Total		44	1	8	3	19	4	0	26	8	5	118	

Unique Herd Breakdowns		DVO_CODE											Total Herds
Year	Armagh	Ballymena	Coleraine	Dungannon	Enniskillen	Larne	L'Derry	Newry	Nt'Ards	Omagh			
2006	44	1	8	3	20	4	0	26	8	6	120		

A herd is defined as being a Br reactor herd if it had at least one Br reactor animal in that month and no Br reactor animals during the previous 12 months.

A Br unique herd breakdown is defined as a herd which has had at least one BR reactor during the specified calendar year irrespective of any Br reactors during the previous calendar year.

Brucellosis: number of reactor animals by month and by DVO 2008

2008	DVO_CODE											
Year	Month	Armagh	Ballymena	Coleraine	Dungannon	Enniskillen	Larne	L'Derry	Newry	Nt'Ards	Omagh	Total
2008	1	5	0	3	18	1	1	0	30	0	1	59
2008	2	9	0	1	0	2	5	1	17	0	3	38
2008	3	18	0	2	0	6	0	2	16	0	3	47
2008	4	9	0	2	1	0	1	0	9	0	11	33
2008	5	8	0	1	0	0	0	0	13	0	1	23
2008	6	4	0	0	0	1	0	0	52	0	0	57
2008	7	2	0	1	0	1	0	0	14	0	0	18
2008	8	2	0	1	1	1	1	0	10	1	1	18
2008	9	4	1	4	1	2	4	0	10	0	2	28
2008	10	0	0	0	2	2	0	0	7	0	1	12
2008	11	2	2	0	0	1	1	0	10	4	2	22
2008	12											
Total		63	3	15	23	17	13	3	188	5	25	355

Brucellosis: number of reactor animals by month and by DVO 2007

2007	DVO_CODE											
Year	Month	Armagh	Ballymena	Coleraine	Dungannon	Enniskillen	Larne	L'Derry	Newry	Nt'Ards	Omagh	Total
2007	1	2	0	0	0	34	3	0	2	1	0	42
2007	2	2	0	0	0	0	0	0	4	1	0	7
2007	3	1	0	0	0	0	0	0	2	0	1	4
2007	4	4	0	0	3	20	4	0	13	0	0	44
2007	5	38	0	30	0	19	0	0	22	1	0	110
2007	6	5	0	0	0	1	0	1	0	0	0	7
2007	7	3	0	1	2	2	0	0	8	0	1	17
2007	8	13	0	0	3	0	0	0	8	0	1	25
2007	9	12	0	0	0	1	0	0	1	0	0	14
2007	10	7	1	8	1	6	3	0	18	1	1	46
2007	11	4	2	4	2	7	4	2	11	1	1	38
2007	12	8	1	6	8	7	1	0	12	2	3	48
Total		99	4	49	19	97	15	3	101	7	8	402

Brucellosis: number of reactor animals by month and by DVO 2006

2006	DVO_CODE											
Year	Month	Armagh	Ballymena	Coleraine	Dungannon	Enniskillen	Larne	L'Derry	Newry	Nt'Ards	Omagh	Total
2006	1	22	0	0	0	7	0	0	3	0	0	32
2006	2	9	0	1	0	1	0	0	20	1	0	32
2006	3	9	0	0	0	2	0	0	7	0	0	18
2006	4	23	0	1	0	3	0	0	2	1	0	30
2006	5	1	0	0	0	3	0	0	17	1	1	23
2006	6	14	0	0	0	1	0	0	5	1	1	22
2006	7	27	0	1	0	2	0	0	5	1	1	37
2006	8	11	0	0	0	2	0	0	19	1	0	33
2006	9	1	0	0	15	5	0	0	2	0	0	23
2006	10	5	0	1	10	1	0	0	2	1	2	22
2006	11	3	1	3	0	6	2	0	1	2	1	19
2006	12	2	0	1	0	17	2	0	1	0	0	23
Total		127	1	8	25	50	4	0	84	9	6	314

A Br reactor animal is defined as an animal where the manual interpretation field for a serological test is positive ('P') with the first test date being taken as the time at which the animal became a reactor.

Month = November 2008

Ref.	Total	Armagh	Ballymena	Coleraine	Dungannon	Enniskillen	Larne	L'derry	Newry	Nt'ards	Omagh	
b16	No. herds with any test completed in month	6844	583	478	723	794	993	622	245	954	466	986
b17	No. herds with any test, from start of year	21356	1891	1331	2413	2516	3015	1552	813	3246	1561	3018
b35	All herds with any test, from start of year	23928	2366	1431	2691	2828	3168	1667	929	3843	1811	3194
b18	No. herds with any test, from start of year (no cattle)	2572	475	100	278	312	153	115	116	597	250	176
b19	No. herds with herd test completed in month	2702	255	188	246	272	378	249	110	439	172	393
b20	No. herds with herd test, from start of year	18397	1733	1005	1961	2111	2660	1235	710	3009	1361	2612
b50	All herds with herd test, from start of year	21299	2239	1138	2284	2467	2837	1374	841	3661	1632	2826
b21	No. herds with herd test, from start of year (no cattle)	2902	506	133	323	356	177	139	131	652	271	214
b22	No. herds with herd test during last 12 months	19793	1809	1142	2115	2299	2861	1406	770	3127	1462	2802
b39	No. herds with herd test during last 13-24 months	20154	1835	1155	2192	2347	2942	1435	754	3151	1535	2808
b23	No. herds with herd test during 2007	20232	1822	1186	2198	2342	2933	1444	749	3181	1541	2836
b24	No. herds with herd test during 2006	20658	1899	1216	2189	2456	2969	1459	807	3241	1553	2869
b48	No. herds with herd test during 2005	20852	1862	1240	2178	2444	3047	1514	795	3256	1574	2942
b51	No. herds with herd test during 2004	20152	1968	1163	2051	2269	3127	1435	720	3328	1433	2658
b33	No. herds with herd test during 2003	17477	2001	965	1558	1677	3016	1289	508	3286	1196	1981
b25	No. herds with any risk test completed	9719	1295	536	1085	986	1418	693	269	1751	592	1094
b26	No. herds with herd risk test completed	4516	972	148	441	270	759	266	71	1184	122	283
b27	No. herds with restricted herd test completed	286	67	6	22	13	24	21	3	106	4	20

b28	Number of dairy herds	3487	297	300	533	404	381	311	75	430	299	457
b37	No. dairy herds only tested by bulk milk ELISA since start of year	772	22	120	189	121	34	102	21	42	44	77
b29	No. dairy herds only tested by bulk milk ELISA	549	11	88	154	96	14	75	14	21	27	49
b40	No. dairy herds only tested by bulk milk ELISA during last 13-24 months	677	20	132	180	109	25	75	23	24	22	67
b38	Total no. herds tested for Br since start of year	19169	1755	1125	2150	2232	2694	1337	731	3051	1405	2689
b30	Total no. herds tested for Br during last 12 months	20342	1820	1230	2269	2395	2875	1481	784	3148	1489	2851
b41	Total no. herds tested for Br during last 13-24 months	20831	1855	1287	2372	2456	2967	1510	777	3175	1557	2875
b31	Total no. herds tested for Br during 2007	20869	1841	1306	2382	2447	2954	1511	770	3202	1570	2886
b32	Total no. herds tested for Br during 2006	21259	1914	1335	2360	2535	2989	1542	827	3258	1576	2923
b49	Total no. herds tested for Br during 2005	21567	1880	1351	2392	2571	3065	1577	820	3279	1622	3010
b43	Total no. herds tested for Br during 2004	20990	1977	1297	2246	2410	3139	1532	755	3343	1530	2761
b34	Total no. herds tested for Br during 2003	18441	2014	1045	1796	1864	3045	1370	545	3310	1304	2148

Month = November 2008												
Ref		Total	Armagh	Ballymena	Coleraine	Dungannon	Enniskillen	Larne	L'derry	Newry	Nt'ards	Omagh
c1	Total number of tests in current month	9265	865	650	991	1101	1334	852	296	1241	633	1302
c2	Total number of tests from start of year	96278	9276	6841	10982	11333	14088	8014	3155	12808	6500	13281
c3	No. tests during the same time period in the previous year	86235	8882	6447	9994	9872	12416	7587	2592	10796	6118	11621
c4	% change between years	10.4	4.2	5.8	9.0	12.9	11.9	5.3	17.8	15.7	5.9	12.5
c5	No. tests in the previous 12 months	102173	9895	7325	11668	11973	14881	8553	3364	13519	6931	14064
c6	No. animal tests in current month	142659	14707	10337	14453	12876	16384	15322	6371	18487	13196	20526
c7	No. of animal tests from start of year	1201793	150053	67896	129825	113489	153632	95123	43255	190810	101815	155895
c8	No. animal tests during the same time period in the previous year	1132616	149734	64908	125679	110320	147681	89041	33414	162360	106811	142668
c9	% change between years	5.8	0.2	4.4	3.2	2.8	3.9	6.4	22.8	14.9	-4.9	8.5
c10	No. animal tests in previous 12 months	1328840	164091	78902	143732	123721	168807	110004	49241	205256	112145	172941
c11	No. cattle eligible for Br testing	961666	82938	68897	129546	104712	105157	84398	37769	120072	98865	129312
c12	No. cattle herds eligible for Br testing	24424	2217	1528	2741	2911	3311	1799	972	3719	1847	3379
c13	No. restricted herd tests during month	35	5	0	1	1	6	0	0	15	2	5
c14	No. animals tested	3085	424	0	16	28	332	0	0	1247	441	597
c15	No. herd tests during month	2724	257	191	247	275	382	255	112	440	172	393
c16	No. animals tested	124884	13068	9036	12485	10766	14069	13411	5775	16552	11794	17928
c17	No. individual tests during month	6541	608	459	744	826	952	597	184	801	461	909
c18	No. animals tested	17775	1639	1301	1968	2110	2315	1911	596	1935	1402	2598
c19	No. CTA tests during month	520	98	17	94	43	24	56	7	98	40	43
c20	No. animals with CTA test	605	111	17	101	48	27	73	11	123	43	51
c21	No. CTT tests during month	164	43	9	7	15	18	7	3	34	6	22
c22	No. animals with CTT test	232	65	10	12	16	22	7	3	51	7	39
c36	No. animals Br tested since start of year	843419	86953	55648	103656	88027	102980	72918	33347	118572	87296	122676
c23	No. animals Br tested in previous 12 months	905537	90973	62492	112093	94323	109736	81669	36641	124428	93128	130593
c39	No. animals Br tested in previous 13-24 months	906122	89661	58968	112918	96647	111431	82538	33298	124109	98044	127623
c25	No. animals Br tested in 2007	911394	90027	61673	113643	97367	111311	84280	33430	124695	97294	130288

c26	No. animals Br tested in 2006	928500	92643	60862	112747	104149	114386	83121	36609	126674	101775	128566
c61	No. animals Br tested in 2005	911790	83476	60686	108024	100843	116686	85152	35739	121948	95202	129923
c43	No. animals Br tested in 2004	860653	87159	53453	97093	95858	112411	76668	30836	119660	85925	111964
c24	No. animals Br tested in 2003	749981	86650	50657	82874	69128	104554	69845	23369	118038	69743	82225
c37	No. animals BME tested since start of year	71450	2780	10350	18202	10566	1857	10157	2251	3126	5605	6556
c27	No. animals BME tested in previous 12 months	52929	1935	7567	15196	9010	612	7729	1573	1519	3593	4195
c40	No. animals BME tested in previous 13-24 months	60633	1813	11387	17124	8912	917	6927	2986	2095	2517	5955
c29	No. animals BME tested in 2007	62135	2096	10732	18669	9194	919	6877	2781	2318	3564	4985
c30	No. animals BME tested in 2006	56682	1169	10405	16977	6539	910	8147	3343	1368	2202	5622
c62	No. animals BME tested in 2005	61779	1434	8633	19522	10361	1174	5415	2838	2090	5510	4802
c44	No. animals BME tested in 2004	69547	1058	10009	16930	9544	1231	8802	4072	954	9622	7325
c28	No. animals BME tested in 2003	66314	775	5196	17726	9967	1027	5459	2883	1443	11431	10407
c31	Total animals currently monitored by BME	290262	27271	25134	47164	27451	19882	27658	7576	35368	35822	36936
c38	Current total animals under Br surveillance since start of year	914869	89733	65998	121858	98593	104837	83075	35598	121698	92901	129232
c32	Current total animals under Br surveillance	958466	92908	70059	127289	103333	110348	89398	38214	125947	96721	134788
c41	Total animals under Br surveillance in last 13-24 months	966755	91474	70355	130042	105559	112348	89465	36284	126204	100561	133578
c34	Total animals under Br surveillance in 2007	973529	92123	72405	132312	106561	112230	91268	39952	128042	103977	134188
c35	Total animals under Br surveillance in 2006	985182	93812	71267	129724	110688	115296	91268	86464	37977	128876	134188
c63	Total animals under Br surveillance in 2005	973569	84910	69319	127546	111204	117860	90567	38577	124038	100712	134725
c42	Total animals under Br surveillance in 2004	930200	88217	63462	114023	105402	113642	85470	34908	120614	95547	119289
c33	Total animals under Br surveillance in 2003	816295	87425	55853	100600	79095	105581	75304	26252	119481	81174	92632

Month = November 2008

Ref		Total	Armagh	Ballymena	Coleraine	Dungannon	Enniskillen	Larne	L'derry	Newry	Nt'ards	Omagh
c76	No. premovement tests off-farm in 2008	46421	2825	4020	5718	5979	6628	4416	1490	4611	3208	7526
c70	No. premovement tests off-farm in 2007	44457	2468	4236	5574	5456	5959	4558	1395	4663	3020	7128
c64	No. premovement tests off-farm in 2006	43112	2518	4009	5493	5539	5646	4357	1285	4483	3143	6639
c45	No. premovement tests off-farm in 2005	28594	2012	2624	3584	3807	3661	2595	908	3097	1957	4349
c46	No. premovement tests off-farm in 2004	746	44	115	111	83	53	98	17	84	72	69
c77	No. post-movement tests in 2008	997	104	81	85	158	83	65	38	206	59	118
c71	No. post-movement tests in 2007	1136	132	83	133	134	101	82	42	186	84	159
c65	No. post-movement tests in 2006	1185	133	111	136	141	89	86	37	210	73	169
c47	No. post-movement tests in 2005	1569	185	159	170	170	125	118	47	240	145	210
c48	No. post-movement tests in 2004	37	4	5	10	4	4	1	2	2	1	4
c78	No. premovement animal tests off-farm in 2008	171920	11065	14706	21407	20800	22421	16325	6547	17026	13272	28351
c72	No. premovement animal tests off-farm in 2007	170535	10191	15272	21030	20115	21117	17403	6246	17856	12577	28728
c66	No. premovement animal tests off-farm in 2006	168585	10638	14446	21309	21166	19996	17200	6333	16617	13707	27173
c49	No. premovement animal tests off-farm in 2005	121055	8707	9725	15180	15649	14090	10814	5112	12947	9485	19346
c50	No. premovement animal tests off-farm in 2004	2832	129	350	393	353	202	270	95	448	355	237
c79	No. post-movement animal tests in 2008	1706	174	138	159	249	161	86	56	373	101	209
c73	No. post-movement animal tests in 2007	2150	269	139	297	221	146	138	106	350	150	334
c67	No. post-movement animal tests in 2006	2181	205	231	278	270	160	129	79	383	124	322
c51	No. post-movement animal tests in 2005	3643	396	388	457	381	205	195	98	606	413	504
c52	No. post-movement animal tests in 2004	133	4	15	50	37	10	2	4	2	2	7
c80	No. reactors detected by movement tests 2008	24	1	0	6	0	1	1	0	7	0	8
c74	No. reactors detected by movement tests 2007	11	1	2	0	2	3	0	0	1	0	2
c68	No. reactors detected by movement tests 2006	8	0	0	2	0	2	0	0	1	2	1
c53	No. reactors detected by movement tests 2005	6	1	0	0	1	2	0	0	0	0	2
c54	No. reactors detected by movement tests 2004	1	0	0	1	0	0	0	0	0	0	0
c81	No. inconclusives detected by movement tests 2008	1936	142	159	207	240	292	156	78	188	138	336
c75	No. inconclusives detected by movement tests 2007	1617	183	170	190	191	202	158	55	148	87	233
c69	No. inconclusives detected by movement tests 2006	1323	145	95	130	224	170	122	51	97	89	200
c55	No. inconclusives detected by movement tests 2005	495	68	24	53	76	43	26	31	58	50	66
c56	No. inconclusives detected by movement tests 2004	10	0	1	1	3	0	2	0	0	1	2
c57	Total pre-movement and post-movement tests	168254	10425	15443	21014	21471	22349	16376	5261	17782	11762	26371
c58	Total pre-movement and post-movement animal tests	644740	41778	55410	80560	79241	78508	62562	24676	66608	50186	105211
c59	Total BR reactors detected by movement tests	50	3	2	9	3	8	1	0	9	2	13
c60	Total BR inconclusives detected by movement tests	5381	538	449	581	734	707	464	215	491	365	837

Explanatory Comments for Brucellosis Statistics - B. Testing Herds

B16	No. herds with any test completed in month	Blood Test of any disease status and size (herd or animal-level). Tests with no animals are excluded.
B17	No. herds with any test, from start of year	Blood Test of any disease status and size (herd or animal-level) carried out on a herd since 1st January. Tests with no animals are excluded.
B35	All herds with any test, from start of year	Blood test of any disease status and size (herd or animal-level) carried out on a herd since 1st January. Tests with no animals are included.
B18	No. herds with any test, from start of year (no cattle)	Herd or individual blood test of any disease status (routine, risk or restricted) where no cattle were recorded at all such tests since 1st January
B19	No. herds with herd test completed in month	Herd level blood test of any disease status (routine, risk or restricted) completed during the above month. Tests with no animals are excluded.
B20	No. herds with herd test, from start of year	Herd level blood test of any disease status (routine, risk or restricted) completed since 1st January. Tests with no animals are excluded.
B50	All herds with herd test, from start of year	Herd level blood test of any disease status (routine, risk or restricted) completed since 1st January. Tests with no animals are included.
B21	No. herds with herd test, from start of year (no cattle)	Herd level blood test of any disease status (routine, risk or restricted) where no cattle were recorded at all such herd tests since 1st January.
B22	No. herds with herd test during last 12 months	Herd level blood test of any disease status (routine, risk or restricted) completed in the 12 month period from the above month. Tests with no animals are excluded.
B39	No. herds with herd test during last 13-24 months	Herd level blood test of any disease status (routine, risk or restricted) completed in the 13-24 month period from the above month. Tests with no animals are excluded.
B23	No. herds with herd test during 2007	Herd level blood test of any disease status (routine, risk or restricted) completed in the calendar year 2007. Tests with no animals are excluded.
B24	No. herds with herd test during 2006	Herd level blood test of any disease status (routine, risk or restricted) completed in the calendar year 2006. Tests with no animals are excluded.
B48	No. herds with herd test during 2005	Herd level blood test of any disease status (routine, risk or restricted) completed in the calendar year 2005. Tests with no animals are excluded.
B51	No. herds with herd test during 2004	Herd level blood test of any disease status (routine, risk or restricted) completed in the calendar year 2004. Tests with no animals are excluded.
B33	No. herds with herd test during 2003	Herd level blood test of any disease status (routine, risk or restricted) completed in the calendar year 2003. Tests with no animals are excluded.
B25	No. herds with any risk test completed	Herd has had a herd or individual level risk blood test since start of calendar year and number tested > 0
B26	No. herds with herd risk test completed	Herd has had a herd level risk blood test since start of calendar year and number tested > 0.
B27	No. herds with restricted herd test completed	Herd has had a restricted herd test (RHT) since start of calendar year and number tested > 0.

B28	Number of dairy herds	Number of herds with a Dairy Supplier Number and/or Milk Licence Number recorded on APHIS and currently have dairy cows in the herd.
B37	No. dairy herds only tested by bulk milk ELISA since start of year	No. dairy herds where no herd blood test was recorded since the start of the calendar year i.e. tested only by bulk milk ELISA (BME).
B29	No. dairy herds only tested by bulk milk ELISA	No. dairy herds where no herd blood test was recorded during the last 12 month period i.e. tested only by bulk milk ELISA (BME).
B40	No. dairy herds only tested by bulk milk ELISA during last 13-24 months	No. dairy herds where no herd blood test was recorded during the last 13-24 month period i.e. tested only by bulk milk ELISA (BME).
B38	Total no. herds tested for Br since start of year	No. herds tested by serology or bulk milk ELISA completed since the start of the calendar year. Tests with no animals are excluded. Currently it is assumed that all dairy herds are subjected to BME testing.
B30	Total no. herds tested for Br during last 12 months	No. herds tested by serology or bulk milk ELISA completed in the 12 month period from the above month. Tests with no animals are excluded. Currently it is assumed that all dairy herds are subjected to BME testing.
B41	Total no. herds tested for Br during last 13-24 months	No. herds tested by serology or bulk milk ELISA completed in the 13-24 month period from the above month. Tests with no animals are excluded. Currently it is assumed that all dairy herds are subjected to BME testing.
B31	Total no. herds tested for Br during 2007	No. herds tested by serology or bulk milk ELISA completed during 2007. Tests with no animals are excluded. Currently it is assumed that all dairy herds are subjected to BME testing.
B32	Total no. herds tested for Br during 2006	No. herds tested by serology or bulk milk ELISA completed during 2006. Tests with no animals are excluded. Currently it is assumed that all dairy herds are subjected to BME testing.
B49	Total no. herds tested for Br during 2005	No. herds tested by serology or bulk milk ELISA completed during 2005. Tests with no animals are excluded. Currently it is assumed that all dairy herds are subjected to BME testing. 2005 figures also assume that the number of dairy farms are the same as were present on APHIS in February 2004.
B43	Total no. herds tested for Br during 2004	No. herds tested by serology or bulk milk ELISA completed during 2004. Tests with no animals are excluded. Currently it is assumed that all dairy herds are subjected to BME testing. 2004 figures also assume that the number of dairy farms are the same as were present on APHIS in February 2003.
B34	Total no. herds tested for Br during 2003	No. herds tested by serology or bulk milk ELISA completed during 2003. Tests with no animals are excluded. Currently it is assumed that all dairy herds are subjected to BME testing. 2003 figures also assume that the number of dairy farms are the same as were present on APHIS in February 2002.

Explanatory Comments for Brucellosis Statistics - C. Testing Animals

C1	Total number of tests in current month	Number of herds and individual blood tests performed in the month stated above. Tests with no animals are excluded
C2	Total number of tests from start of year	From 1st January. Only includes blood sample tests. Tests with no animals are excluded.
C3	No. tests during the same time period in the previous year	From 1st January of previous year. Only includes blood sample tests. Tests with no animals are excluded.
C4	% change between years	Difference between the number of blood tests carried out during the current year and the number carried out in the previous expressed as a percentage.
C5	No. tests in the previous 12 months	Last 12 month period from the above month. Only includes blood sample tests. Tests with no animals are excluded.
C6	No. animal tests in current month	Animal test = a count of the number of animals blood tested within each herd or individual test. Some animals may have been blood tested multiple times during the year.
C7	No. animal tests from start of year	Number of animal tests carried out since 1st January. Only includes Blood Sample Tests
C8	No. animal tests during the same time period in the previous year	Number of animal blood tests carried out from 1st January in the previous year over the same time interval as recorded for the current year.
C9	% change between years	Difference between the number of animal blood tests during the current year and the number carried out in the previous expressed as a percentage.
C10	No. animal tests in previous 12 months	Last 12 month period from the above month. Only includes blood sample tests.
C11	No. cattle eligible for BR testing	Based on the average number of animals presented at Br herd blood tests over last 4 years. Herds which have only been tested by BME are excluded.
C12	No. cattle herds eligible for BR testing	Based on cattle being presented for a BR herd blood tests over last 4 years. Herds with '0' cattle are excluded. Herds which have only been tested by BME are also excluded.
C13	No. restricted herd tests during month	All restricted herd tests (RHT, STC, VTC) sampled during the above month.
C14	No. animals tested	Total of the animals reported as being tested within restricted herd tests (RHT, STC, VTC) during the above month.
C15	No. herd tests during month	Total of number of herd blood tests sampled during the above month.
C16	No. animals tested	Total of the animals reported as being blood tested within all herd tests during the above month.
C17	No. individual tests during month	Total number individual tests sampled during the above month.
C18	No. animals tested	Total of the animals reported as being blood tested within all individual tests during the above month.
c19	No. CTA tests during month	Total number of check test abortions (CTAs) tests sampled during the above month.
c20	No. animals with CTA test	Total of the animals reported as being tested within all CTA tests during the above month.
c21	No. CTT tests during month	Total number of check test tracing (CTTs) tests sampled during the above month.
c22	No. animals with CTT test	Total of the animals reported as being tested within all CTT tests during the above month.
c36	No. animals Br tested since start of year	Animals identified as having had at least one Br blood test since the start of the calendar year. Due to the same animals being sampled in different DVO areas, the 'Total' is not the sum of the DVO figures.
c23	No. animals BR tested in previous 12 months	Animals identified as having had at least one BR blood test during the last 12 month period from the above month. Due to the same animals being sampled in different DVO areas, the 'Total' is not the sum of the DVO figures.
c39	No. animals BR tested in previous 13-24 months	Animals identified as having had at least one BR blood test during the last 13-24 month period from the above month. Due to the same animals being sampled in different DVO areas, the 'Total' is not the sum of the DVO figures.
c25	No. animals BR tested in 2007	Animals identified as having had at least one Br blood test during the 2007 calendar year. Due to the same animals being sampled in different DVO areas, the 'Total' is not the sum of the DVO figures.
c26	No. animals BR tested in 2006	Animals identified as having had at least one Br blood test during the 2006 calendar year. Due to the same animals being sampled in different DVO areas, the 'Total' is not the sum of the DVO figures.
c61	No. animals BR tested in 2005	Animals identified as having had at least one Br blood test during the 2005 calendar year. Due to the same animals being sampled in different DVO areas, the 'Total' is not the sum of the DVO figures.
c43	No. animals BR tested in 2004	Animals identified as having had at least one Br blood test during the 2004 calendar year. Due to the same animals being sampled in different DVO areas, the 'Total' is not the sum of the DVO figures.
c24	No. animals BR tested in 2003	Animals identified as having had at least one Br blood test during the 2003 calendar year. Due to the same animals being sampled in different DVO areas, the 'Total' is not the sum of the DVO figures.
c37	No. animals BME tested since start of year	Estimated number of animals tested within dairy herds which were subjected to only bulk milk ELISA (BME) surveillance for BR i.e. not blood sampled since the start of year. Animal count based on >2yr old female cattle of a dairy breed within each dairy herd.

c27	No. animals BME tested in previous 12 months	Estimated number of animals tested within dairy herds which were subjected to only bulk milk ELISA (BME) surveillance for BR i.e. not blood sampled during the last 12 months. Animal count based on >2yr old female cattle of a dairy breed.
c40	No. animals BME tested in previous 13-24 months	Estimated number of animals tested within dairy herds which were subjected to only bulk milk ELISA (BME) surveillance for BR i.e. not blood sampled during the last 13-24 months. Animal count based on >2yr old female cattle of a dairy breed.
c29	No. animals BME tested in 2007	Estimated number of animals tested within dairy herds which were subjected only to bulk milk ELISA (BME) surveillance for BR i.e. not blood sampled during 2007. Animal count based on >2yr old female cattle of a dairy breed
c30	No. animals BME tested in 2006	Estimated number of animals tested within dairy herds which were only subjected to bulk milk ELISA (BME) surveillance for BR i.e. not blood sampled during 2006. Animal count based on >2yr old female cattle of a dairy breed within each dairy herd
C62	No. animals BME tested in 2005	Estimated number of animals tested within dairy herds which were subjected only to bulk milk ELISA (BME) surveillance for BR i.e. not blood sampled during 2005. Animal count based on >2yr old female cattle of a dairy breed within each dairy herd.
C44	No. animals BME tested in 2004	Estimated number of animals tested within dairy herds which were subjected only to bulk milk ELISA (BME) surveillance for BR i.e. not blood sampled during 2004. Animal count based on >2yr old female cattle of a dairy breed within each dairy herd as of 12th February 2004.
c28	No. animals BME tested in 2003	Estimated number of animals tested within dairy herds which were subjected only to bulk milk ELISA (BME) surveillance for BR i.e. not blood sampled during 2003. Animal count based on >2yr old female cattle of a dairy breed within each dairy herd
c31	Total animals currently monitored by BME	Estimated number of animals tested within dairy herds which were subjected to bulk milk ELISA (BME) surveillance for BR. Animal count based on >2yr old female cattle of a dairy breed.
c38	Current total animals under Br surveillance since start of year	Total number of animals in herds tested by serology or bulk milk ELISA completed since the start of the calendar year. Tests with no animals are excluded. Currently it is assumed that all dairy herds are subjected to BME testing.
c32	Current total animals under Br surveillance	Total number of animals in herds tested by serology or bulk milk ELISA completed in the 12 month period from the above month. Tests with no animals are excluded. Currently it is assumed that all dairy herds are subjected to BME testing.
c41	Total animals under Br surveillance in last 13-24 months	Total number of animals in herds tested by serology or bulk milk ELISA completed in the 13-24 month period from the above month. Tests with no animals are excluded. Currently it is assumed that all dairy herds are subjected to BME testing.
c34	Total animals under Br surveillance in 2007	Total number of animals in herds tested by serology or bulk milk ELISA completed during 2007. Currently it is assumed that all dairy herds are subjected to BME testing.
c35	Total animals under Br surveillance in 2006	Total number of animals in herds tested by serology or bulk milk ELISA completed during 2006. Currently it is assumed that all dairy herds are subjected to BME testing.
C63	Total animals under Br surveillance in 2005	Total number of animals in herds tested by serology or bulk milk ELISA completed during 2005. Currently it is assumed that all dairy herds are subjected to BME testing
C42	Total animals under Br surveillance in 2004	Total number of animals in herds tested by serology or bulk milk ELISA completed during 2004. Currently it is assumed that all dairy herds are subjected to BME testing.
C33	Total animals under Br surveillance in 2003	Total number of animals in herds tested by serology or bulk milk ELISA completed during 2003. Currently it is assumed that all dairy herds are subjected to BME testing. Animal numbers for 40 herds currently not included. 2003 figures also assume that the number of dairy farms are the same as were present on APHIS in February 2004.

Explanatory Comments for Brucellosis Statistics - C1. Premovement Testing

c76	No. premovement tests off-farm in 2008	Number of premovement tests carried out before animal movement occurred (MTO) during the current year.
c70	No. premovement tests off-farm in 2007	Number of premovement tests carried out before animal movement occurred (MTO) during 2007. The requirement for premovement testing was introduced on 1st December 2004.
c64	No. premovement tests off-farm in 2006	Number of premovement tests carried out before animal movement occurred (MTO) during 2006. The requirement for premovement testing was introduced on 1st December 2004.
c45	No. premovement tests off-farm in 2005	Number of premovement tests carried out before animal movement occurred (MTO) during 2005. The requirement for premovement testing was introduced on 1st December 2004.
c46	No. premovement tests off-farm in 2004	Number of premovement tests carried out before animal movement occurred (MTO) during 2004. The requirement for premovement testing was introduced on 1st December 2004.
c77	No. post-movement tests in 2008	Number of movement tests carried out after animal movement occurred (MTI) during the current year.
c71	No. post-movement tests in 2007	Number of movement tests carried out after animal movement occurred (MTI) during 2007. The requirement for premovement testing was introduced on 1st December 2004.
c65	No. post-movement tests in 2006	Number of movement tests carried out after animal movement occurred (MTI) during 2006. The requirement for premovement testing was introduced on 1st December 2004.
c47	No. post-movement tests in 2005	Number of movement tests carried out after animal movement occurred (MTI) during 2005. The requirement for premovement testing was introduced on 1st December 2004.
c48	No. post-movement tests in 2004	Number of movement tests carried out after animal movement occurred (MTI) during 2004. The requirement for premovement testing was introduced on 1st December 2004.
c78	No. premovement animal tests off-farm in 2008	Number of premovement animal tests carried out before animal movement occurred (MTO) during the current year.
c72	No. premovement animal tests off-farm in 2007	Number of premovement animal tests carried out before animal movement occurred (MTO) during 2007.
c66	No. premovement animal tests off-farm in 2006	Number of premovement animal tests carried out before animal movement occurred (MTO) during 2006.
c49	No. premovement animal tests off-farm in 2005	Number of premovement animal tests carried out before animal movement occurred (MTO) during 2005.
c50	No. premovement animal tests off-farm in 2004	Number of premovement animal tests carried out before animal movement occurred (MTO) during 2004.
c73	No. post-movement animal tests in 2008	Number of movement animal tests carried out after animal movement occurred (MTI) during the current year.
c73	No. post-movement animal tests in 2007	Number of movement animal tests carried out after animal movement occurred (MTI) during 2007.
c67	No. post-movement animal tests in 2006	Number of movement animal tests carried out after animal movement occurred (MTI) during 2006.
c51	No. post-movement animal tests in 2005	Number of movement animal tests carried out after animal movement occurred (MTI) during 2005.
c52	No. post-movement animal tests in 2004	Number of movement animal tests carried out after animal movement occurred (MTI) during 2004.
c80	No. reactors detected by premovement tests 2008.	Number of BR serological reactors detected by premovement and post-movement testing during current year.
c74	No. reactors detected by premovement tests 2007.	Number of BR serological reactors detected by premovement and post-movement testing during 2007.
c68	No. reactors detected by premovement tests 2006	Number of BR serological reactors detected by premovement and post-movement testing during 2006.
c53	No. reactors detected by premovement tests 2005	Number of BR serological reactors detected by premovement and post-movement testing during 2005.
c54	No. reactors detected by premovement tests 2004	Number of BR serological reactors detected by premovement and post-movement testing during 2004.
c81	No. inconclusives detected by premovement tests 2008	Number of BR serological inconclusive reactors detected by premovement and post-movement testing during the current year.
c75	No. inconclusives detected by premovement tests 2007	Number of BR serological inconclusive reactors detected by premovement and post-movement testing during 2007.
c69	No. inconclusives detected by premovement tests 2006	Number of BR serological inconclusive reactors detected by premovement and post-movement testing during 2006.
c55	No. inconclusives detected by premovement tests 2005	Number of BR serological inconclusive reactors detected by premovement and post-movement testing during 2005.
c56	No. inconclusives detected by premovement tests 2004	Number of BR serological inconclusive reactors detected by premovement and post-movement testing during 2004.
c57	Total pre-movement and post-movement tests	Total number of pre-movement and post-movement tests carried out since 1st December 2004.
c58	Total pre-movement and post-movement animal tests	Total number of pre-movement and post-movement animal tests carried out since 1st December 2004.

- c59 Total BR reactors detected by movement tests** Total number of BR serological reactors detected by pre-movement and post-movement tests carried out since 1st December 2004.
- c60 Total BR inconclusives detected by movement tests** Total number of BR serological inconclusive reactors detected by pre-movement and post-movement tests carried out since 1st December 2004.

Explanatory Comments for Brucellosis Statistics - D. Results

D1	No. of herds with BR reactors during month	A herd is included in this figure if the herd number had a BR Blood test reactor during the above month.
D2	No. of new reactor herds during month	A herd is defined as being a Br reactor herd if it had at least one Br reactor animal in that month and no Br reactor animals during the previous 12 months.
D3	No. of new reactor herds since start of year	= Since 1st January
D4	No. of new reactor herds in the previous 12 months	Last 12 month period from the above month.
D26	No. of new reactor herds in previous 13-24 months	Last 13-24 month period from the above month.
D5	No. of BR reactor animals during month	A Br reactor animal is defined as an animal where the manual interpretation field for a blood test is positive ('P') with the first test date being taken as the time at which the animal became a reactor.
D6	No. of BR reactor animals since start of year	= Since 1st January
D7	No. of reactor animals in the previous 12 months	Last 12 month period from the above month.
D27	No. of reactor animals in previous 13-24 months	Last 13-24 month period from the above month.
D8	Herd Prevalence (%)	Number of herds with a Br serological reactor during the above month as a proportion of cattle herds which have presented cattle for a Br herd test during the same time period.
D20	Cumulative herd incidence during 2006 (%)	Number of NEW reactor herds since the start of the calendar year as a proportion of cattle herds which have presented cattle for a Br herd test during the same time period.
D9	Annual herd incidence over the last 12 months (%)	Number of NEW reactor herds during the last 12 months as a proportion of cattle herds which have presented cattle for a Br herd test during the same time period.
D28	Annual herd incidence over the last 13-24 months (%)	Number of NEW reactor herds during the last 13-24 months as a proportion of cattle herds which have presented cattle for a Br herd test during the same time period.
D10	2007 Herd Incidence (%)	Number of NEW reactor herds during 2007 as proportion of cattle herds which have presented cattle for a Br herd test during the same time period.
D11	2006 Herd Incidence (%)	Number of NEW reactor herds during 2006 as proportion of cattle herds which have presented cattle for a Br herd test during the same time period.
D44	2005 Incidence(%)	Number of NEW reactor herds during 2005 as proportion of cattle herds which have presented cattle for a Br herd test during the same time period.
D29	2004 Incidence(%)	Number of NEW reactor herds during 2004 as proportion of cattle herds which have presented cattle for a Br herd test during the same time period.
D15	2003 Herd Incidence (%)	Number of NEW reactor herds during 2003 as proportion of cattle herds which have presented cattle for a Br herd test during the same time period.
D21	Cumulative animal incidence during 2006 (%)	Number of BR reactor animals since the start of the calendar year divided by the number of cattle tested for Br within the same time period
D12	Annual animal incidence over the last 12 months (%)	Number of Br reactor animals over the last 12 months divided by the number of cattle tested for Br within the same time period.
D30	Annual animal incidence over the last 13-24 months (%)	Number of Br reactor animals over the last 13-24 months divided by the number of cattle tested for Br within the same time period.
D13	2007 Animal Incidence (%)	Number of Br reactor animals during 2007 divided by the number of cattle tested for Br within the same time period.
D14	2006 Animal Incidence (%)	Number of Br reactor animals during 2006 divided by the number of cattle tested for Br within the same time period.
D45	2005 Animal Incidence (%)	Number of Br reactor animals during 2005 divided by the number of cattle tested for Br within the same time period.
D31	2004 Animal Incidence (%)	Number of Br reactor animals during 2004 divided by the number of cattle tested for Br within the same time period.
D16	2003 Animal Incidence (%)	Number of Br reactor animals during 2003 divided by the number of cattle tested for Br within the same time period.

d33	APT during current month	= The reactor disclosure rate per 1,000 animal blood tests during current month.
D22	APT since start of 2005	The reactor disclosure rate per 1,000 animal blood tests since the start of the calendar year.
D17	Current 12 month moving average APT	The reactor disclosure rate per 1,000 animal blood tests. Current refers to the rate over the last 12 months.
D19	2007 APT	The reactor disclosure rate per 1,000 animal blood tests during the calendar year.
D51	2006 APT	The reactor disclosure rate per 1,000 animal blood tests during the calendar year.
D46	2005 APT	The reactor disclosure rate per 1,000 animal blood tests during the calendar year.
d32	2004 APT	The reactor disclosure rate per 1,000 animal blood tests during the calendar year.
D18	2003 APT	The reactor disclosure rate per 1,000 animal blood tests during the calendar year.
D23	No. negative in contacts since start of year	Number of animals taken as negative in contacts since the start of the year
D25	No. negative in contacts during 2007	Number of animals taken as negative in contacts during 2007
D52	No. negative in contacts during 2006	Number of animals taken as negative in contacts during 2006
D47	No. negative in contacts during 2005	Number of animals taken as negative in contacts during 2005
D34	No. negative in contacts during 2004	Number of animals taken as negative in contacts during 2004
D24	No. negative in contacts during 2003	Number of animals taken as negative in contacts during 2003
D37	Reactor removal time 2008	Figures given are median values for working days estimated from calendar days (calendar days multiplied by 0.685). Reactors which are not yet slaughtered or where they they were first declared as reactors at slaughter are excluded.
D50	Reactor removal time 2006	Figures given are median values for working days estimated from calendar days (calendar days multiplied by 0.685). Reactors which are not yet slaughtered or where they they were first declared as reactors at slaughter are excluded.
D35	Reactor removal time 2005	Figures given are median values for working days estimated from calendar days (calendar days multiplied by 0.685). Reactors which are not yet slaughtered or where they they were first declared as reactors at slaughter are excluded.
D36	Reactor removal time 2004	Figures given are median values for working days estimated from calendar days (calendar days multiplied by 0.685). Reactors which are not yet slaughtered or where they they were first declared as reactors at slaughter are excluded.
D38	Herds with infection confirmed 2008	Herds where samples have been subjected to culture for <i>Brucella abortus</i> and where the infection was confirmed.
D39	Herds with infection not confirmed 2008	Herds where samples have been subjected to culture for <i>Brucella abortus</i> and where the infection was NOT confirmed within the same calendar year.
D40	% Herds with infection confirmed this year	Percentage of herds where samples have been subjected to culture for <i>Brucella abortus</i> which were found to be positive for infection divided by the total number of herds where samples have been subjected to culture for <i>Brucella abortus</i> .
D56	% Herds with infection confirmed 2007	Percentage of herds where samples have been subjected to culture for <i>Brucella abortus</i> which were found to be positive for infection divided by the total number of herds where samples have been subjected to culture for <i>Brucella abortus</i> in 2007
D53	% Herds with infection confirmed 2006	Percentage of herds where samples have been subjected to culture for <i>Brucella abortus</i> which were found to be positive for infection divided by the total number of herds where samples have been subjected to culture for <i>Brucella abortus</i> in 2006
D48	% Herds with infection confirmed 2005	Percentage of herds where samples have been subjected to culture for <i>Brucella abortus</i> which were found to be positive for infection divided by the total number of herds where samples have been subjected to culture for <i>Brucella abortus</i> in 2005
D41	Reactor animals with infection confirmed 2008	Animals where samples have been subjected to culture for <i>Brucella abortus</i> and where the infection was confirmed.
D42	Reactor animals with infection not confirmed 2008	Animals where samples have been subjected to culture for <i>Brucella abortus</i> and where the infection was NOT confirmed.
D43	% Reactor animals with infection confirmed 2008	Percentage of animals where samples have been subjected to culture for <i>Brucella abortus</i> which were found to be positive for infection divided by the total number of animals where samples have been subjected to culture for <i>Brucella abortus</i> .

D57	% Reactor animals with infection confirmed in 2007	Percentage of reactor animals where samples have been subjected to culture for <i>Brucella abortus</i> which were found to be positive for infection divided by the total number of animals where samples have been subjected to culture for <i>Brucella abortus</i> in 2007
D54	% Reactor animals with infection confirmed in 2006	Percentage of reactor animals where samples have been subjected to culture for <i>Brucella abortus</i> which were found to be positive for infection divided by the total number of animals where samples have been subjected to culture for <i>Brucella abortus</i> in 2006
D49	% Reactor animals with infection confirmed in 2005	Percentage of reactor animals where samples have been subjected to culture for <i>Brucella abortus</i> which were found to be positive for infection divided by the total number of animals where samples have been subjected to culture for <i>Brucella abortus</i> in 2005
D58	No. of new BR herd breakdowns during current year which were confirmed by bacteriological culture	The number of new BR herd breakdowns during the current year where <i>Brucella abortus</i> was cultured.
d66	No. of new BR herd breakdowns during last 12 months which were confirmed by bacteriological culture	The number of new BR herd breakdowns during the last 12 months where <i>Brucella abortus</i> was cultured.
D59	No. of new BR herd breakdowns during 2007 confirmed by bacteriological culture	The number of new BR herd breakdowns during 2007 where <i>Brucella abortus</i> was cultured
D60	No. of new BR herd breakdowns during 2006 confirmed by bacteriological culture	The number of new BR herd breakdowns during 2006 where <i>Brucella abortus</i> was cultured
D61	No. of new BR herd breakdowns during 2005 confirmed by bacteriological culture	The number of new BR herd breakdowns during 2005 where <i>Brucella abortus</i> was cultured
d62	Cumulative culture confirmed herd incidence for 2008 (%)	The number of new BR herd breakdowns during the current year where <i>Brucella abortus</i> was cultured divided by the number of herds with cattle that were tested for brucellosis during the same time period expressed as a percentage