




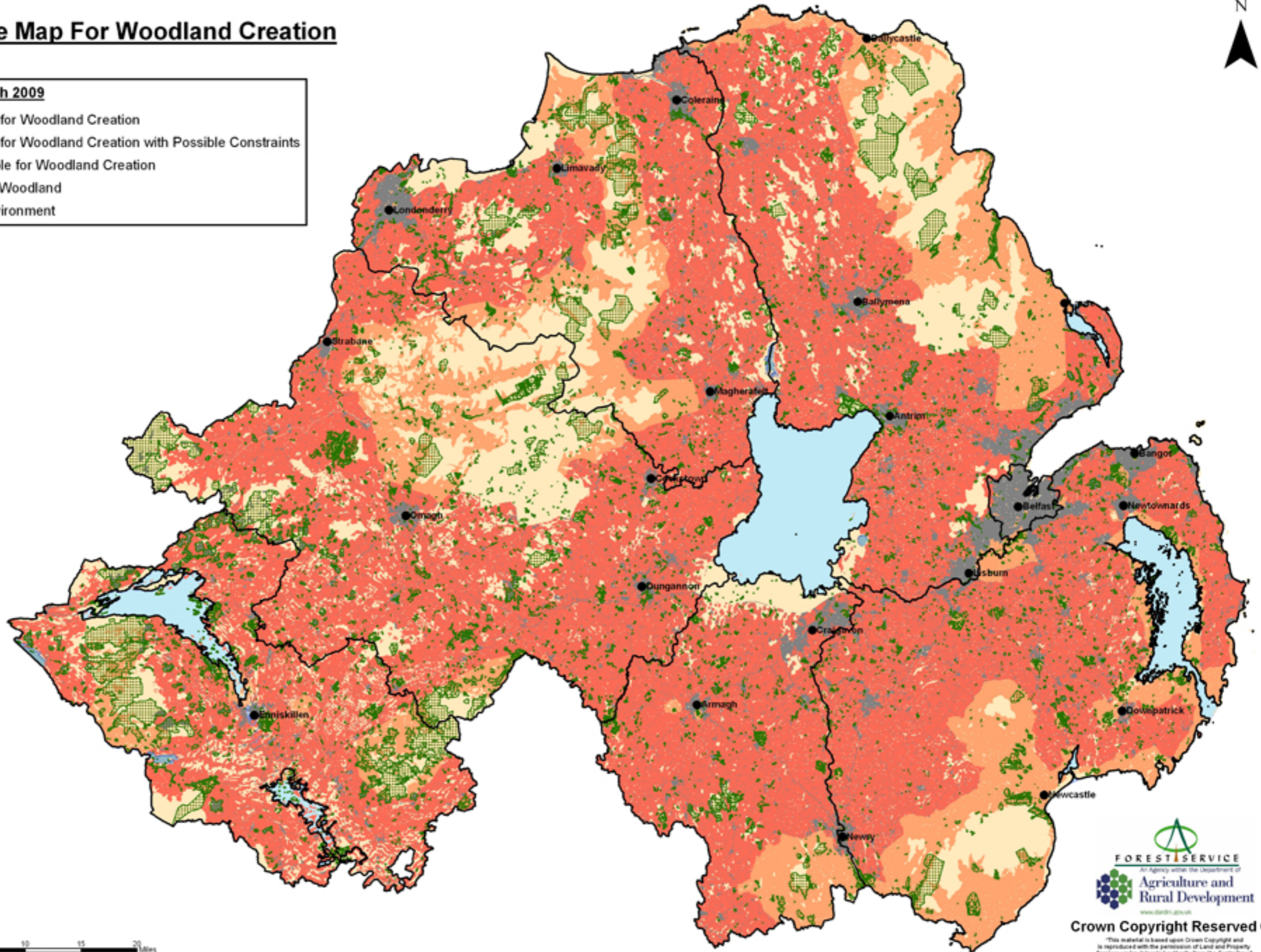


Indicative Map For Woodland Creation

Revised March 2009

-  Suitable for Woodland Creation
-  Suitable for Woodland Creation with Possible Constraints
-  Unsuitable for Woodland Creation
-  Existing Woodland
-  Built Environment



Crown Copyright Reserved ©

This material is based upon Crown Copyright and is reproduced with the permission of Land and Property Services under delegated authority from the Controller of Her Majesty's Stationery Office. © Crown copyright and database rights 1984-2009.