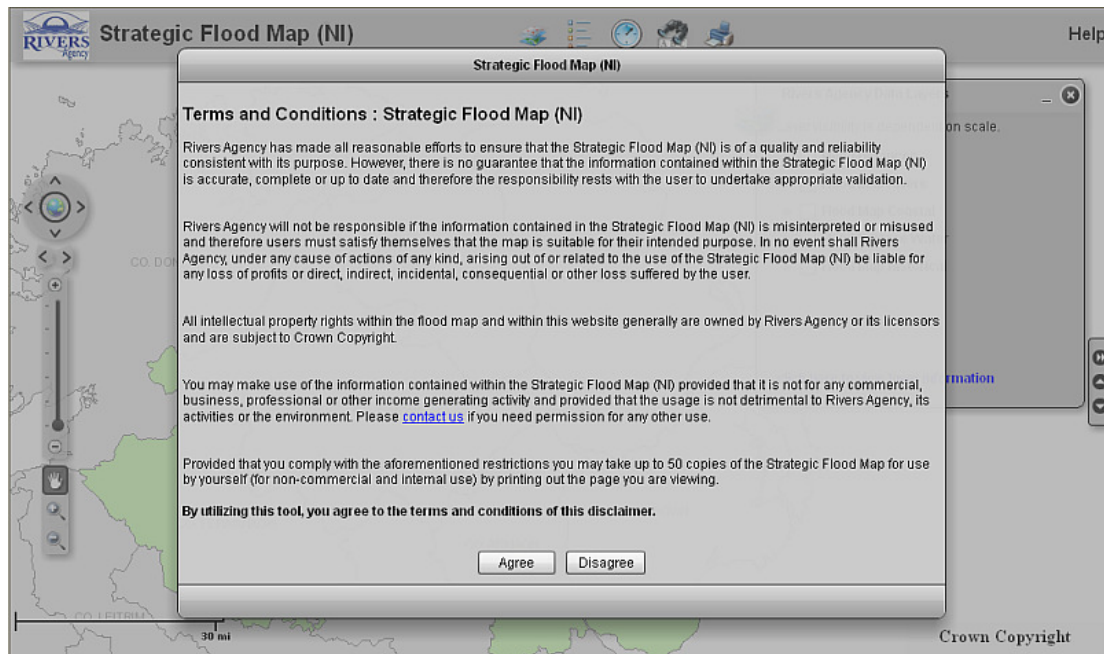


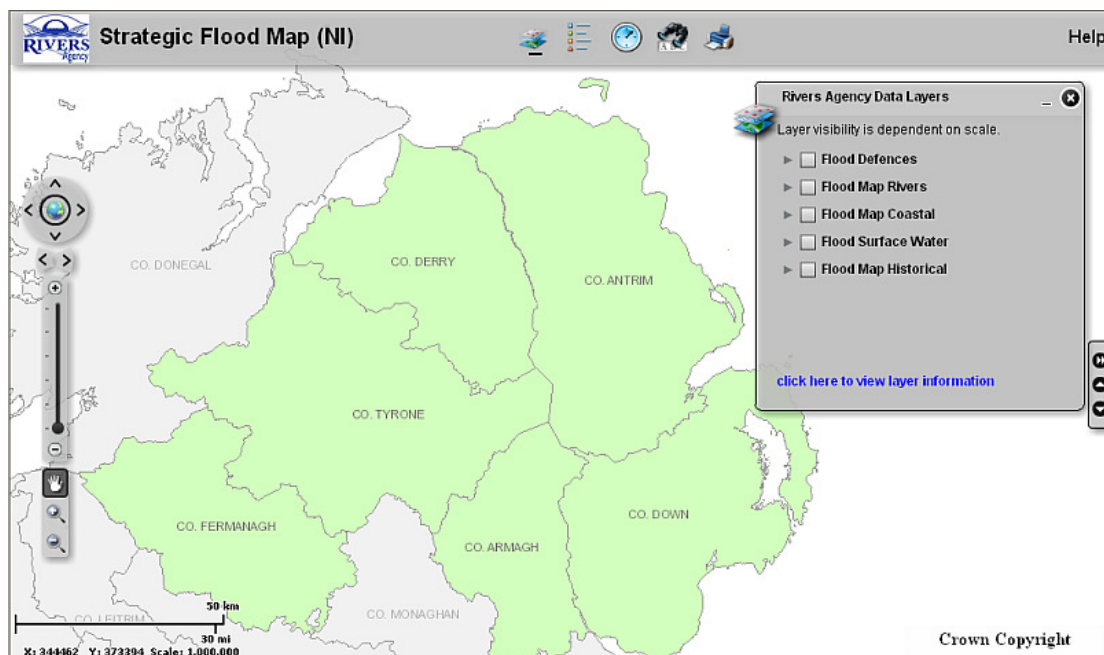
# STRATEGIC FLOOD MAP (NI) - USER GUIDE

## How to Use the Strategic Flood Map (NI)

Initially the Strategic Flood Map (NI) will open with an entrance screen with Terms and Conditions (figure 1), clicking 'Agree' will display the map fully zoomed out (figure 2).

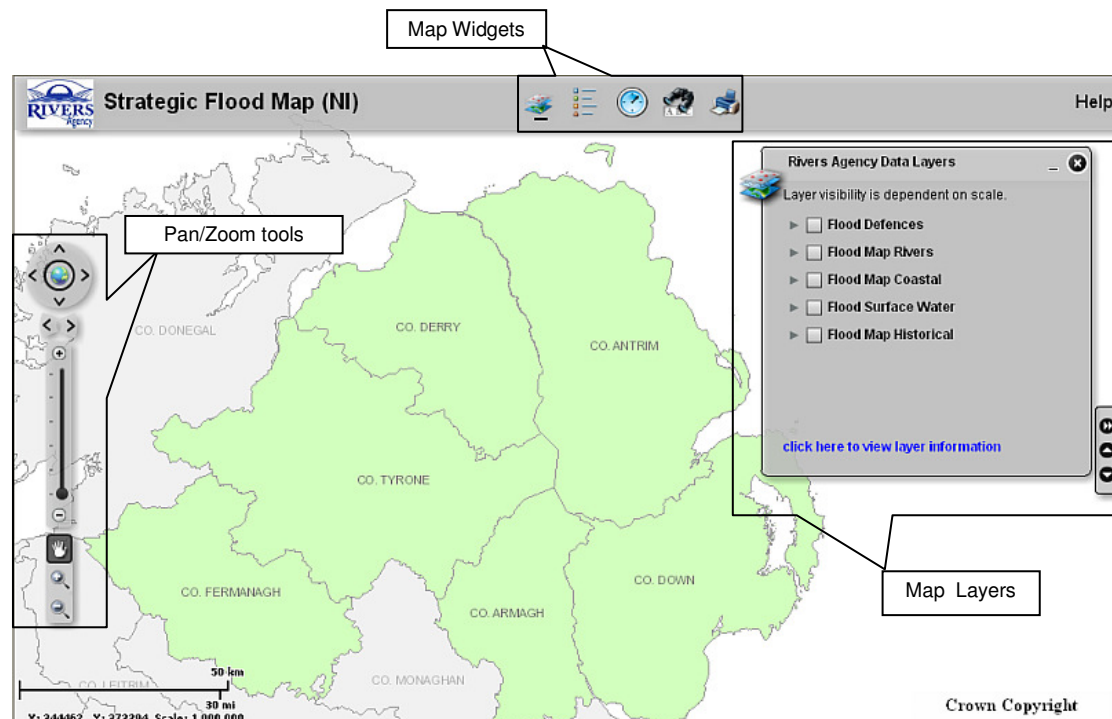


**Figure 1 – Terms and Conditions Screen**



**Figure 2 – Full Extent (Zoomed Out) Map**

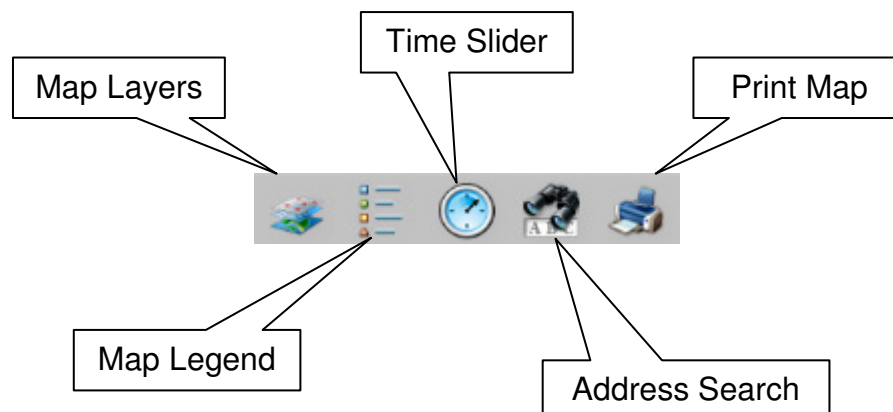
# STRATEGIC FLOOD MAP (NI) - USER GUIDE



**Figure 3 – Map Layout and Tool Locations**

On the left of the map are the pan and zoom tools, use these to move around the map and zoom in for different background mapping.

Along the top are five “widgets” these carry out different functions on the map as detailed below, hovering the mouse over each icon in the map will also display its function.



## STRATEGIC FLOOD MAP (NI) - USER GUIDE

---

### ZOOM & PAN OPTIONS

The map viewer only allows the user to view the map at specific scale thresholds. These are as follows:

<b>Scale Presets</b>	<b>Background Mapping</b>
1:25,000	1:50,000, (black & white)
1:50,000	1:50,000, (black & white)
1:100,000	1:250,000 (colour)
1:250,000	1:250,000 (colour)
1:500,000	1:250,000 (colour)
1:1,000,000	Counties Overlay (colour)

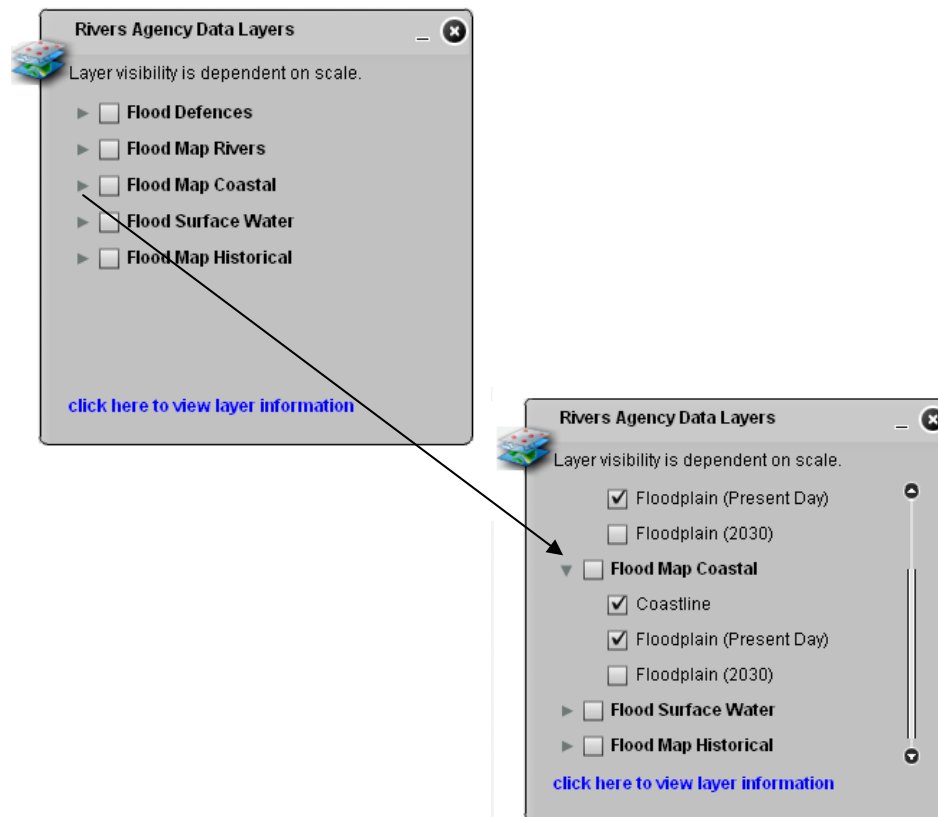
**Note: No flood mapping will appear until zoomed below 1:100,000 and will not be displayed below 1:25,000**

# STRATEGIC FLOOD MAP (NI) - USER GUIDE

## 1. SELECTING FLOOD MAP LAYERS

To the right on the map there is a Data Layers box, it presents five distinct map layers which provide information relating to flooding. These can be displayed individually or as a combination.

Next to each Data Layer is a small grey triangle, by selecting this the user can control the display of the sub-layers that make up the data layer, and can for example choose to display different flood scenarios.



By clicking on the small grey box next to each scenario a 'tick' will show that the layer is active and it will appear in the map viewer. There is a scroll bar to move up and down through the data layers when they are expanded out.

In the box the blue text "click here to view layer information" displays detailed information on each map layer.

## STRATEGIC FLOOD MAP (NI) - USER GUIDE

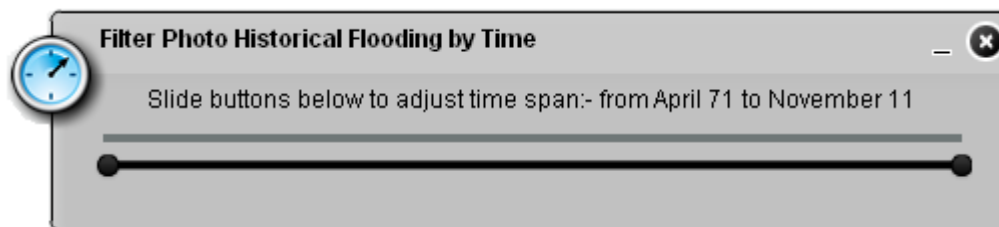
### 2. DISPLAY LEGEND FOR VISIBLE LAYERS



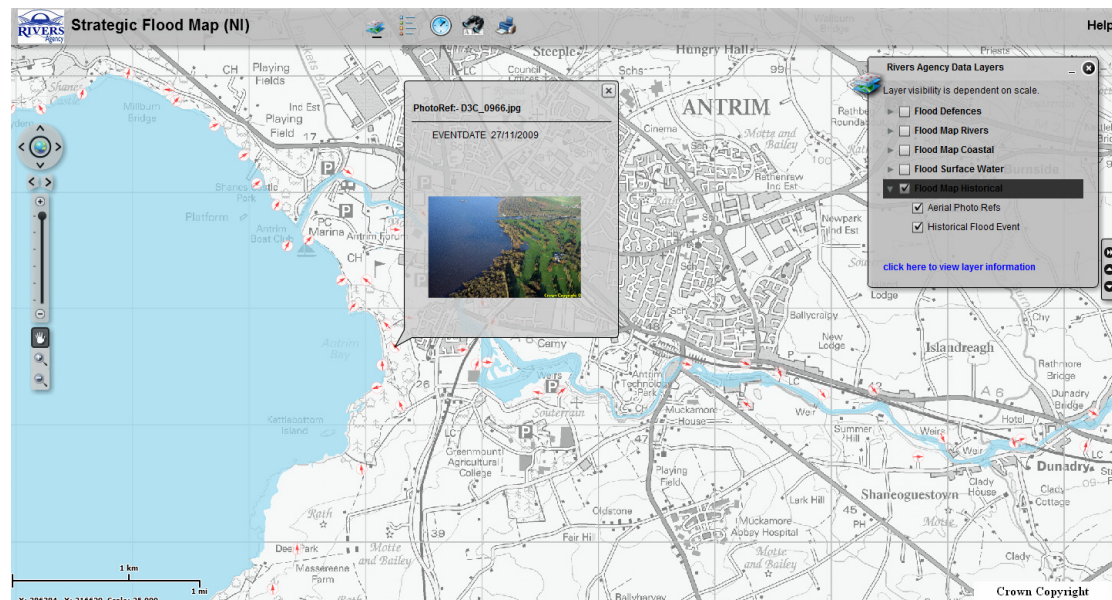
This icon will display a map key for each layer which has been switched on, this informs the user what each colour relates to in the map layers.

**Note: Map layers need to be displayed for a legend to appear**

### 3. FILTERING HISTORICAL FLOODING & PHOTOS BY TIME



This tool allows the historical flood mapping and aerial photography to be 'time enabled' and filters the month/year to show data between specific dates. The slider bar is used by adjusting the position of the small black circles in and out.

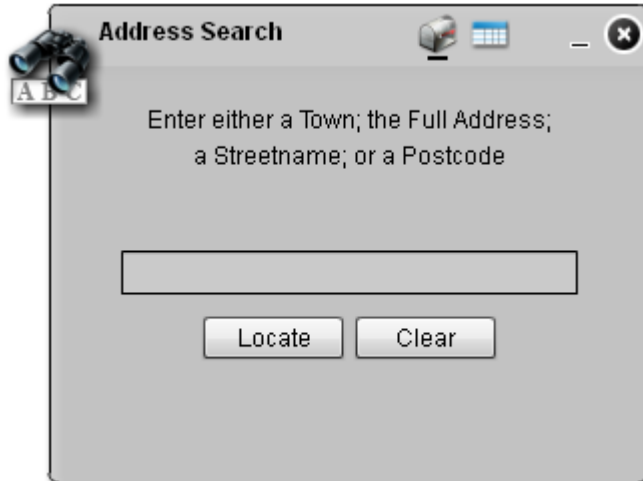


When displaying the historical flooding layer, aerial photographs can be displayed by clicking on the white circle with red arrows. Clicking anywhere on the photograph will enlarge it.

**Note: Direction of red arrow indicates direction of photograph.**

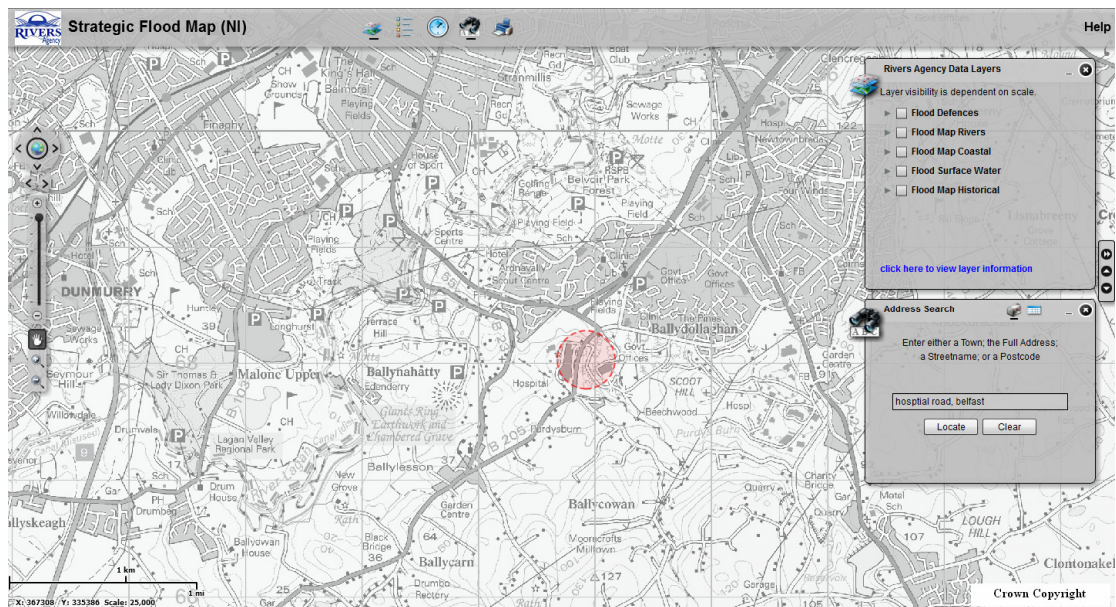
# STRATEGIC FLOOD MAP (NI) - USER GUIDE

## 4. LOCATION SEARCH

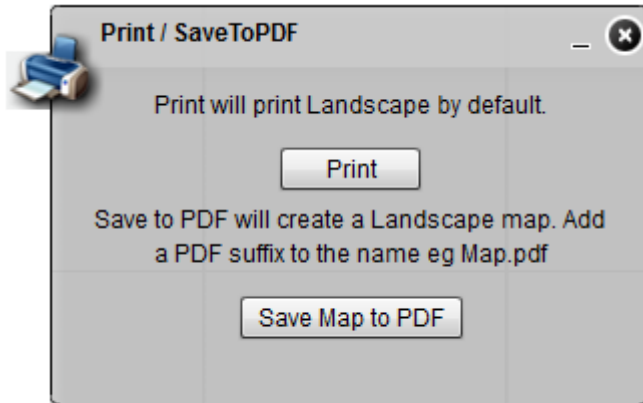


Type an address into the box and click "Locate".

This will display all addresses in a results box relating to the input address, clicking "Clear" will clear the results. When an address is selected a red circle will indicate the location on the map.



## 5. PRINT/SAVE TO PDF



Selecting "Print" will print a landscape map by default. Alternatively it is possible to save the map to your computer by selecting the "Save Map to PDF", and adding a .pdf suffix its name.