

## 12.7 Traditional wooden gates

Grant aid is available for the provision or replacement of traditional gates associated with agricultural use (those erected purely for amenity purposes will NOT be eligible, nor will galvanised tubular gates).

### Conditions and standards

1. Gates shall be soundly framed and constructed from material complying with BS 3470, or to an equivalent design and strength. All gates shall be a minimum height of 1.1 metres overall from the bottom of the bottom rail to the top of the top rail. Where access for fire purposes is required the minimum width of the gate shall be 2.7 metres.
2. Gates shall be fitted with all fittings needed for their operation and shall be hung in a satisfactory manner.
3. Openings greater than 4.5 metres shall have two leaves. Where more than one gate is needed your claim must be based on the total width of all the gates used in that open.
4. Gates must be traditional in design. Timber field gates must be at least 2.4 metres but not more than 4.2 metres wide.
5. The timber used must be sound, free from decay and pressure treated. Only European Larch, Red Deal, Scots Pine, Douglas Fir, Western Red Cedar, Spruce or Hemlock is permitted in construction. Softwood timber of 'D' rail is not acceptable.
6. Hinges must be galvanised, double strap type and of the stated length.
7. Timbers used in wooden gates must be of the following dimensions.

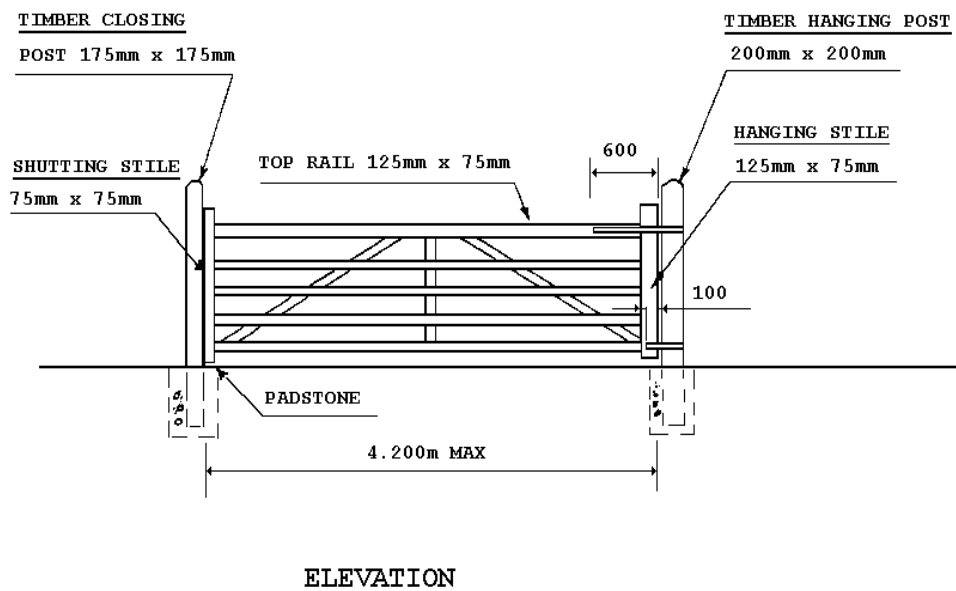
WIDTH OF GATE	Up to 3m	Over 3m
	(Units mm)	(Units= mm)
Top rail	100x 75	125 x 75
Tapered to (top edges chamfered)	75 x 75	75 x 75
Under rails	75 x 25	75 x 25
Braces	75 x 25	75 x 25
Hanging stiles	100 x 75	125 x 75
Shutting stile	75 x 75	75 x 75

**Minimum** dimensions are illustrated in *Diagram 1 - Traditional wooden gate*.

8. Wooden hanging posts must be 200 mm x 200 mm x 2.1 m (8" x 8"). These should be set in concrete to a minimum depth of 900 mm. Concrete should be 450 mm x 450 mm x 600 mm deep.
9. When hung, a padstone must be included to support the weight of the gate when in the closed position. The gate must be prevented from opening across any public road.
10. All wooden gates and gateposts must be treated with a proprietary wood preservative treatment every other year.
11. Where the width of an opening exceeds 4.2 metres (14 feet) a double wooden gate must be used.
12. All timber to be sound and free from decay, and pressure treated.
13. Fasteners to be galvanised and to DARD approval.
14. All joints to be mortised.
15. Closing post to be drilled for closing bar.
16. For gates up to 3.0 metres wide, the top rail and hanging stile may be 100 mm x 75 mm.
17. Hinges must be adjustable to allow for dropping during service.
18. Under rails and bracing to be 75 mm x 25 mm.

19. Infill pattern may vary to suit usage.
20. The following timber must be used: European Larch, Redwood (Red Deal and Scots Pine), Douglas Fir, Western Red Cedar, Spruce, Hemlock.
21. Hinges to be 6 mm x 45 mm wide double strap, and hook to be 20 mm diameter and 70 mm long. Hinge bolts to be 9 mm diameter cup head, square shanked.
22. Gate must not open outwards.

### **DIAGRAM 1 – Traditional wooden Gate**



#### **Areas of Special Scientific Interest (ASSIs)**

**Note: Consent must be obtained from the Environment & Heritage Service (EHS), Department of the Environment before any works are carried out within or along an ASSI boundary. The EHS contact telephone number for further information is 028 9054 6595.**

Management plans are provided for participants in the Environmentally Sensitive Areas and Countryside Management Schemes

