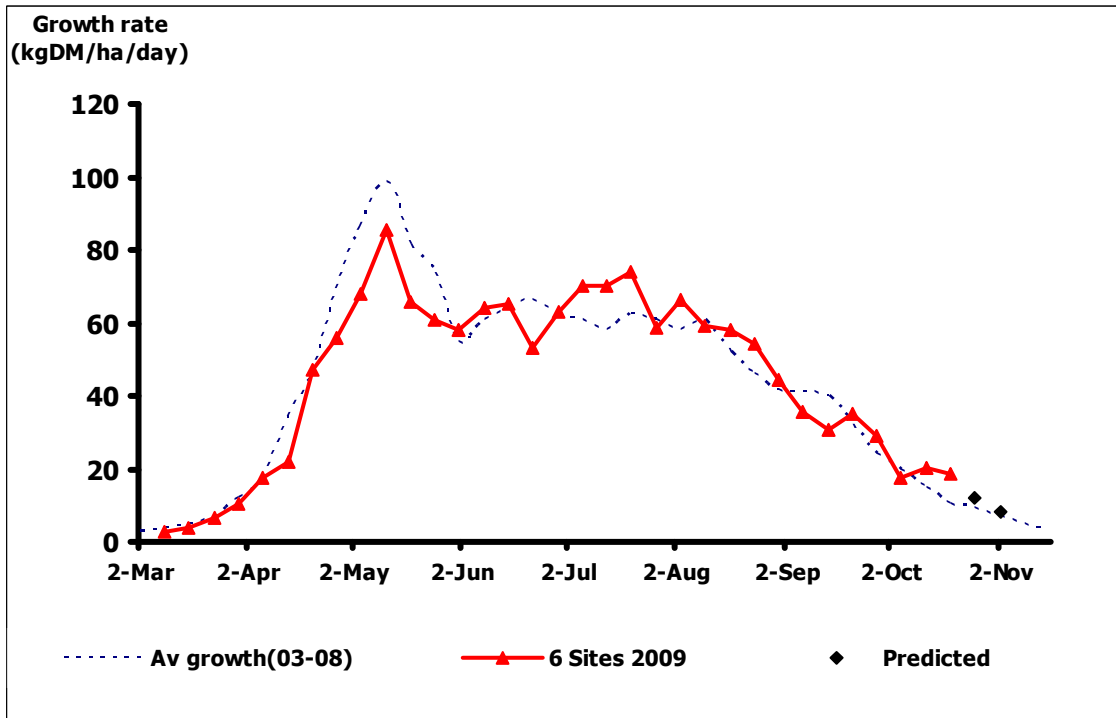


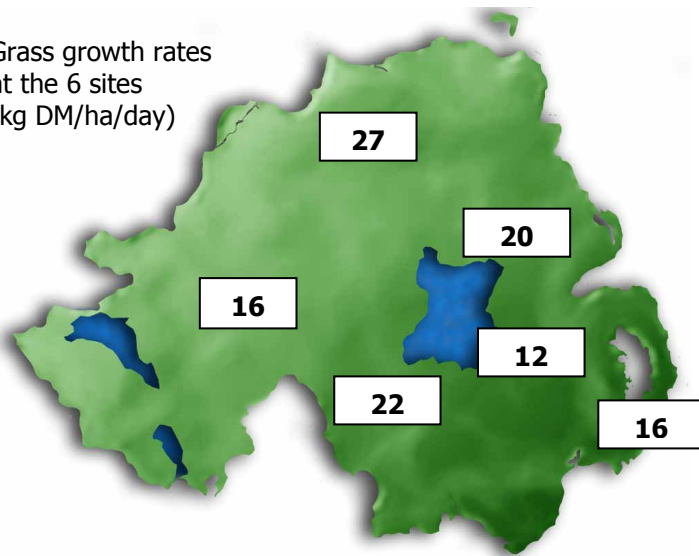
by
Agri-Food and Biosciences Institute, Hillsborough
&
College of Agriculture, Food and Rural Enterprise, Greenmount Campus

Grass Growth and Quality results up to 19th Oct and prediction to 2nd Nov 2009



3 Week Growth ending (kg DM/ha/day)	Actual		Prediction		Grass Quality		
	19 Oct	26 Oct	2 Nov	8 Nov	Dry matter (%)	ME (MJ/kgDM)	Crude Protein (%)
Grass sward (270 kg N/ha/yr)	19	12	8	16	12.1	23	12

Grass growth rates at the 6 sites (kg DM/ha/day)



- Overall grass growth continues to be above average for the time of year. However the return of cooler unsettled weather is likely to reduce growth.
- Ground conditions can change quickly at this stage of the season. The wettest areas should be grazed as soon as possible, if not already grazed.
- Using heifers to graze out remaining grass supplies may be an option if the weather deteriorates. Ensure that areas intended for the initial grazing next spring are fenced off to conserve grass supplies over the winter. This is the final GrassCheck bulletin for 2009.