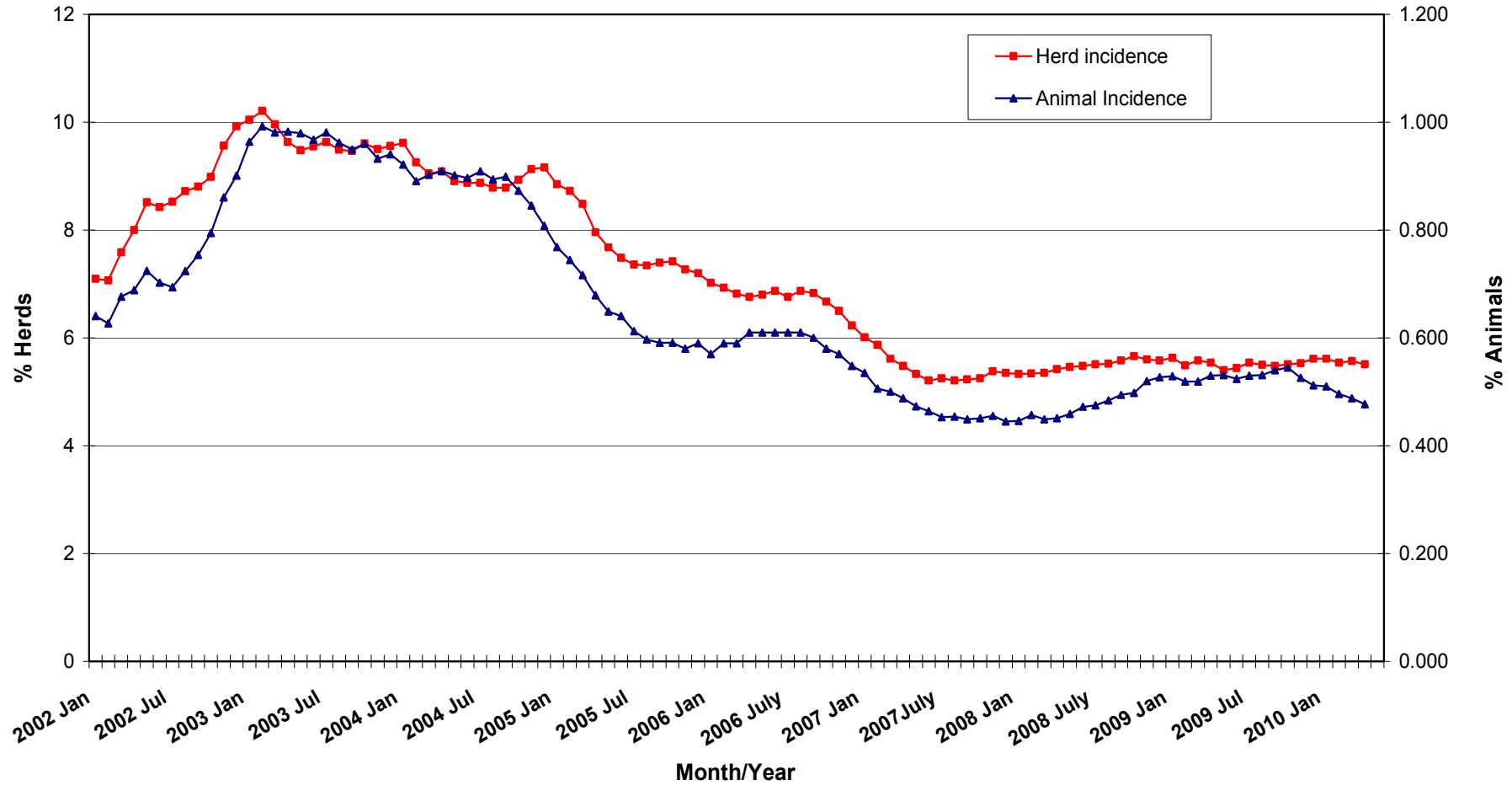
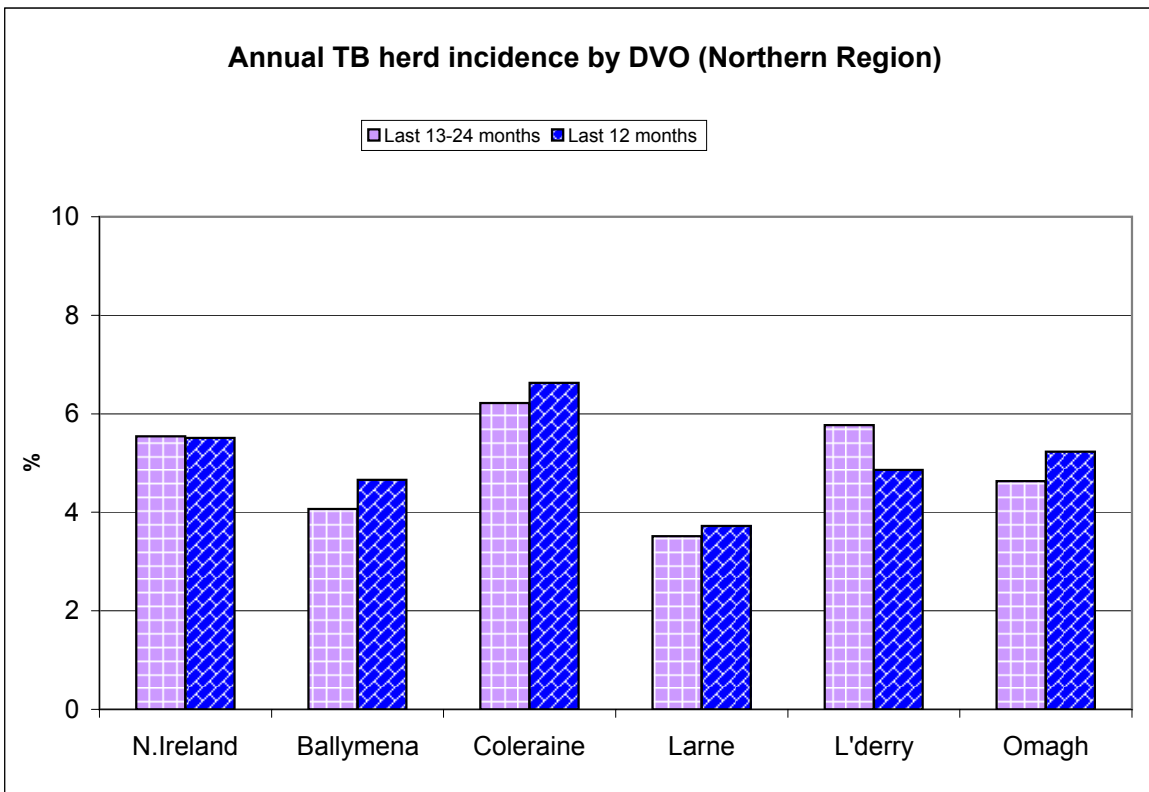
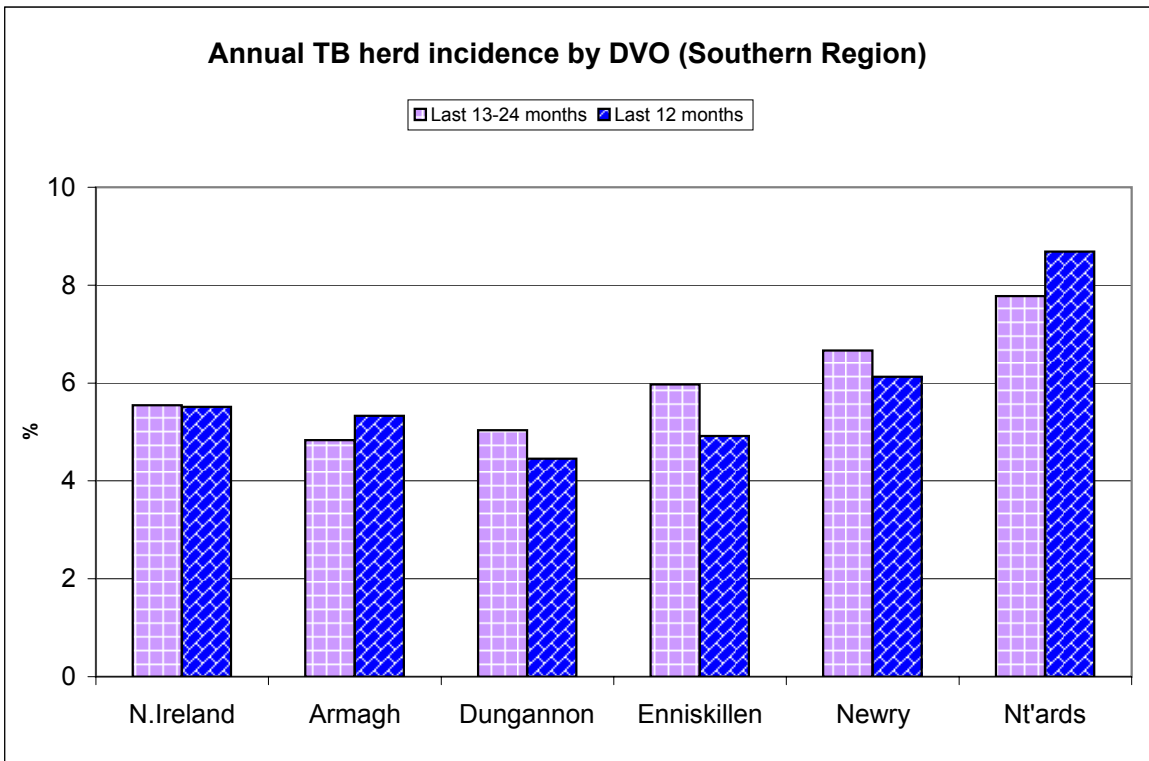


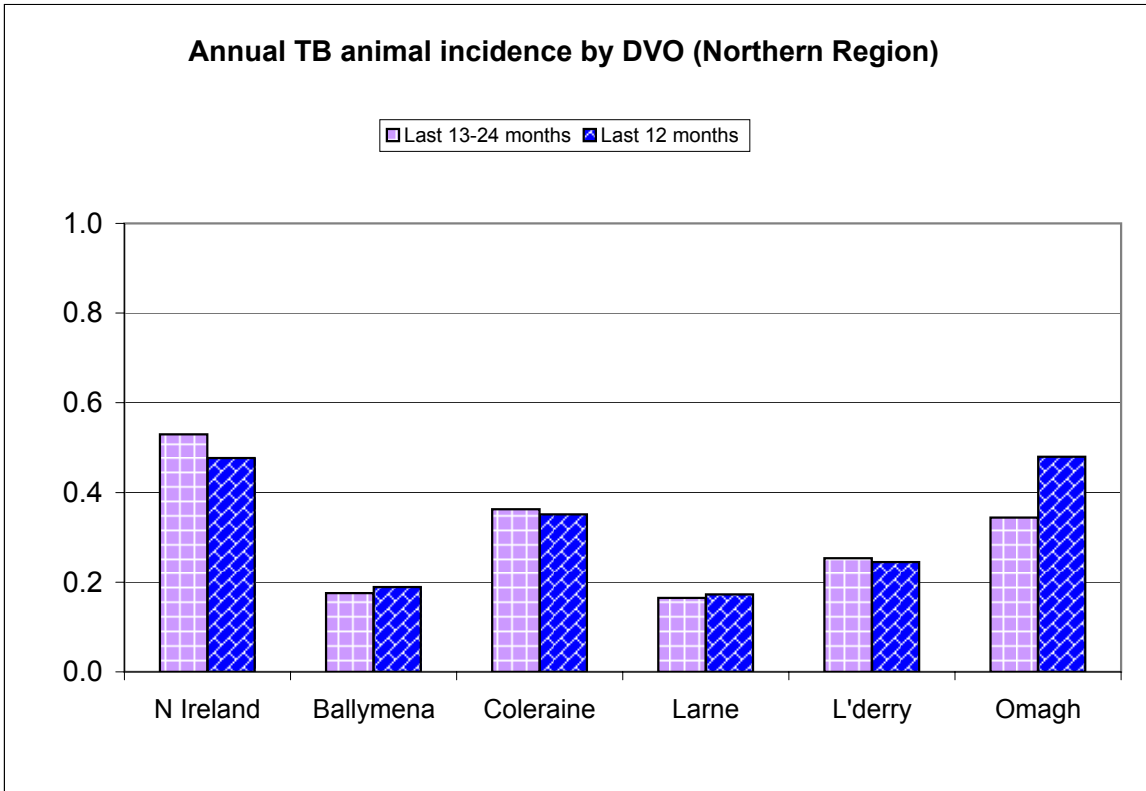
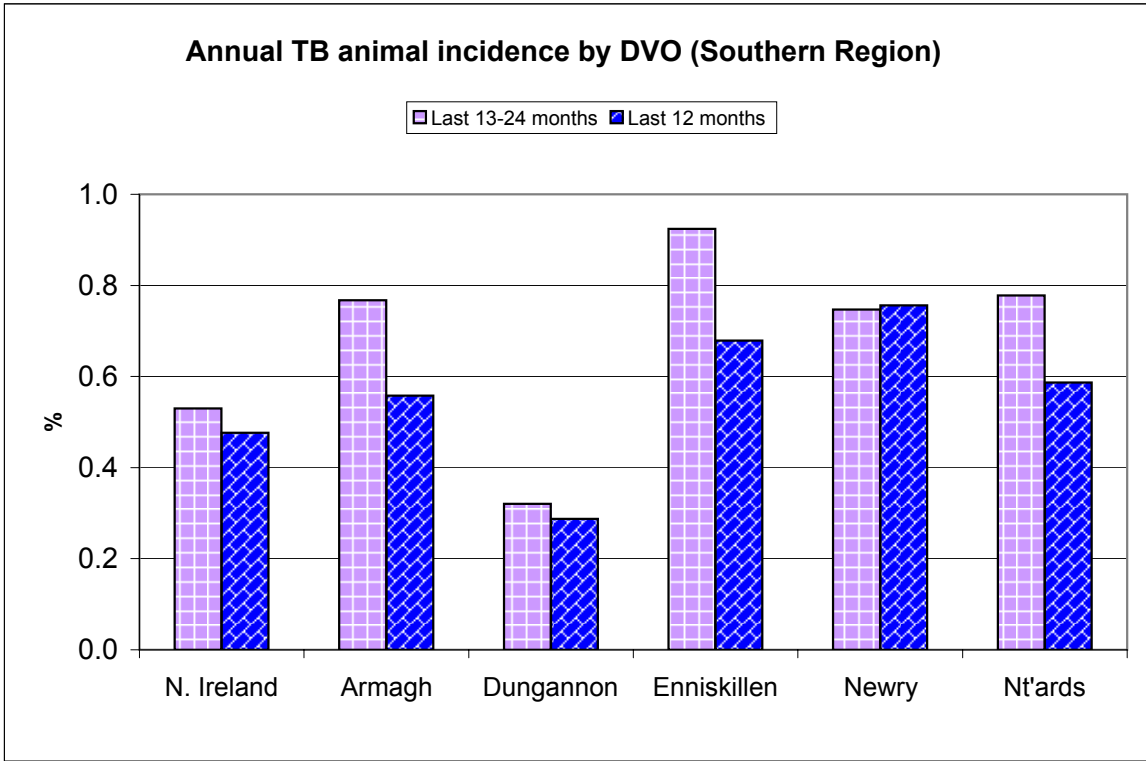
Tuberculosis: Statistics for April 2010

Tests Completed	Herds	Number of herds tested (any test), by DVO	Cumulative Statistics	
		Number of herds with herd-level test, by DVO	Cumulative Statistics	
		Number of herds with any risk test, by DVO		
		Number of herds with herd-level risk test, by DVO		
		Number of herds with herd-level restricted test, by DVO		
	Animals	Total number of tests performed, by DVO	Cumulative Statistics	
		Total number of animals tests, by DVO	Cumulative Statistics	
		Total number of restricted herd tests, by DVO	Number of animals tested	
		Total number of herd tests, by DVO	Number of animals tested	
		Total number of individual tests, by DVO	Number of animals tested	
Total number of animals tested, by DVO				
Summary Statistics	Herds with TB reactors during month, by DVO	Cumulative Statistics	APT	
	Number of new reactor herds, by DVO	Cumulative Statistics	Negative-in-contacts	
	Number of new reactor animals, by DVO		Reactor removal times	
	Herd Prevalance			
	Herd Incidence			
	Animal Incidence			
	Number of reactor animals by month and by DVO			
	Number of new reactor herds by month and by DVO			
Summary Charts	Current Animal Incidence Chart	Monthly TB reactors chart	Yearly Confirmed Herd Prevalence	
	Yearly Animal Incidence Chart	New TB reactor herds	Current Confirmed Herd Prevalence	
	Current Herd Incidence Chart	TB Herd & Animal Incidence		
	Yearly Herd Incidence Chart			

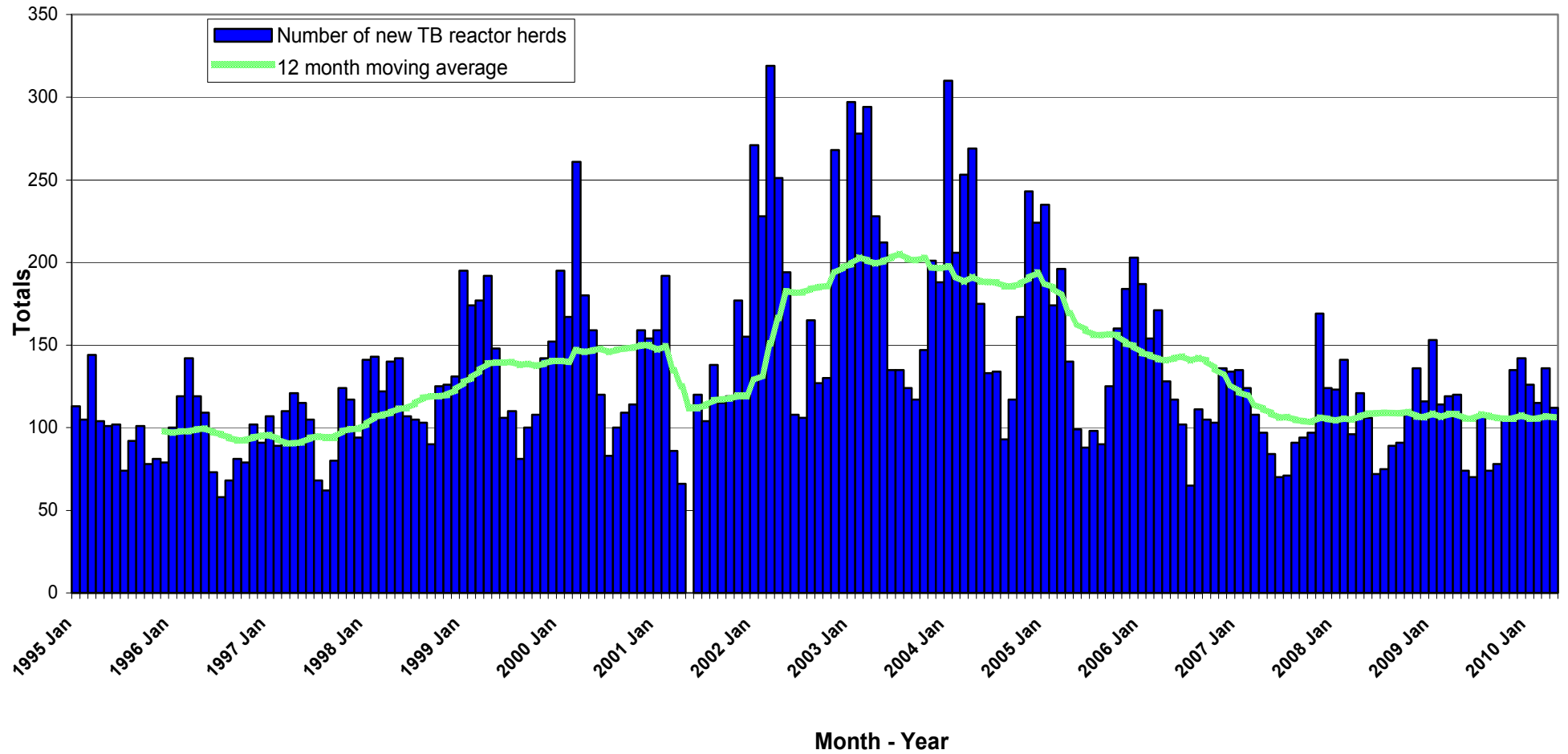
**TB Herd and Animal Incidence:
(12 month moving average: January 2002 to April 2010)**



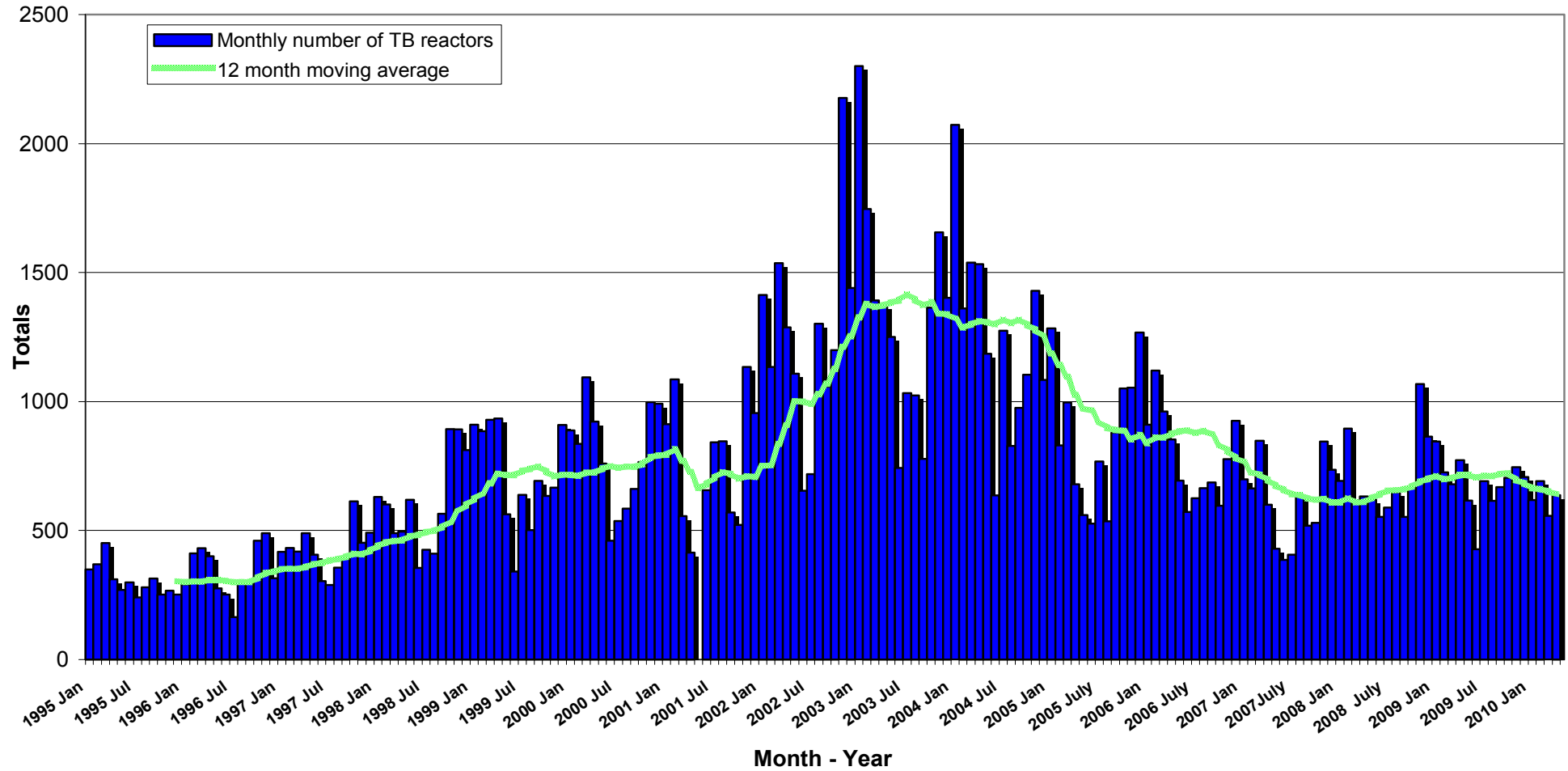


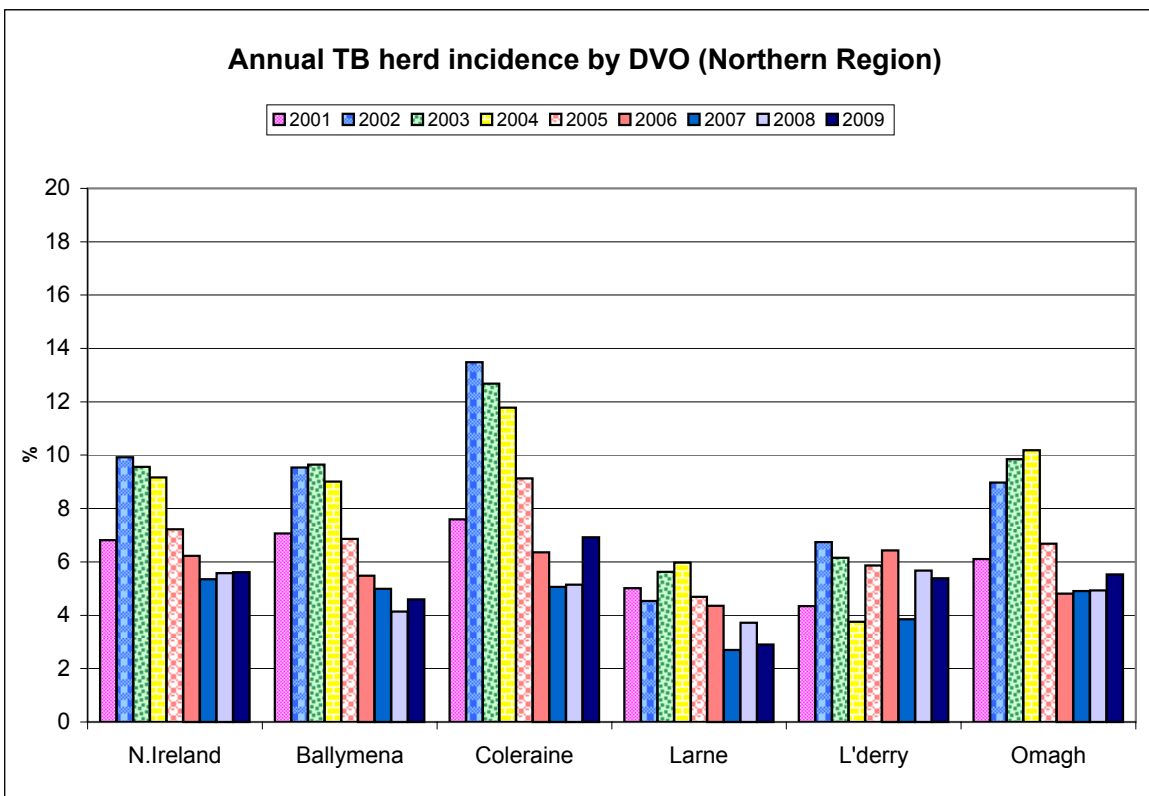
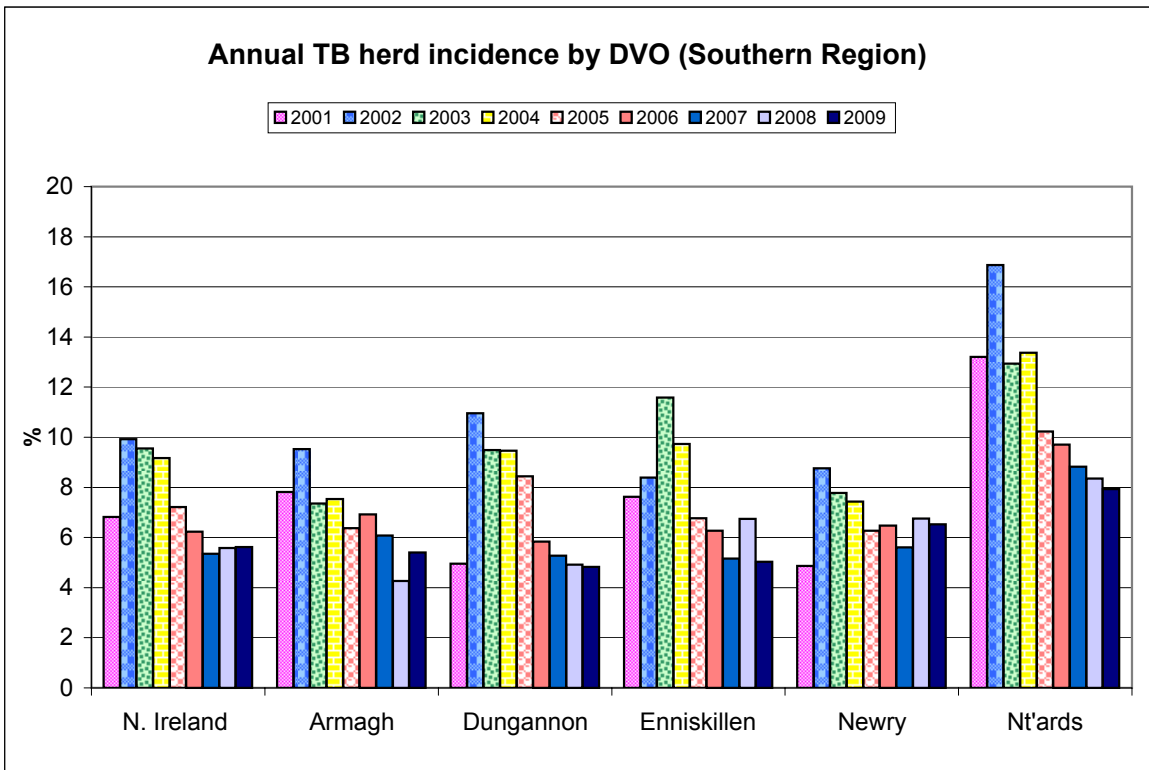


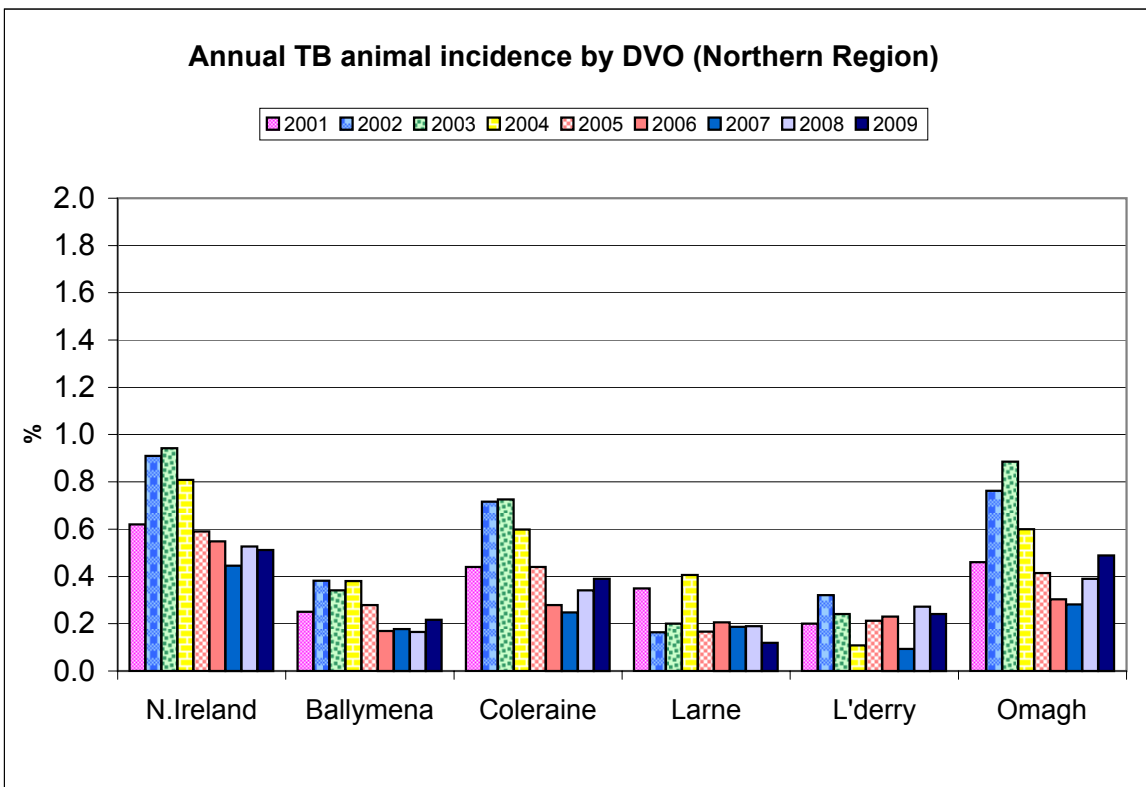
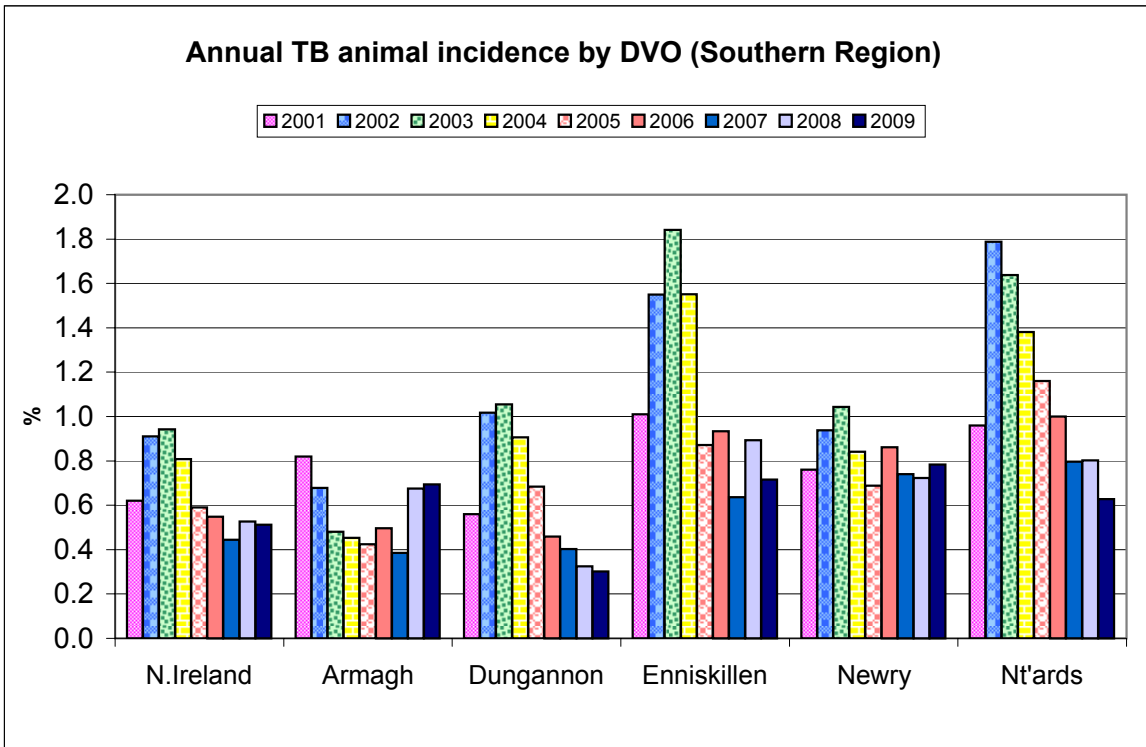
New TB Reactor Herds: January 1995 to April 2010

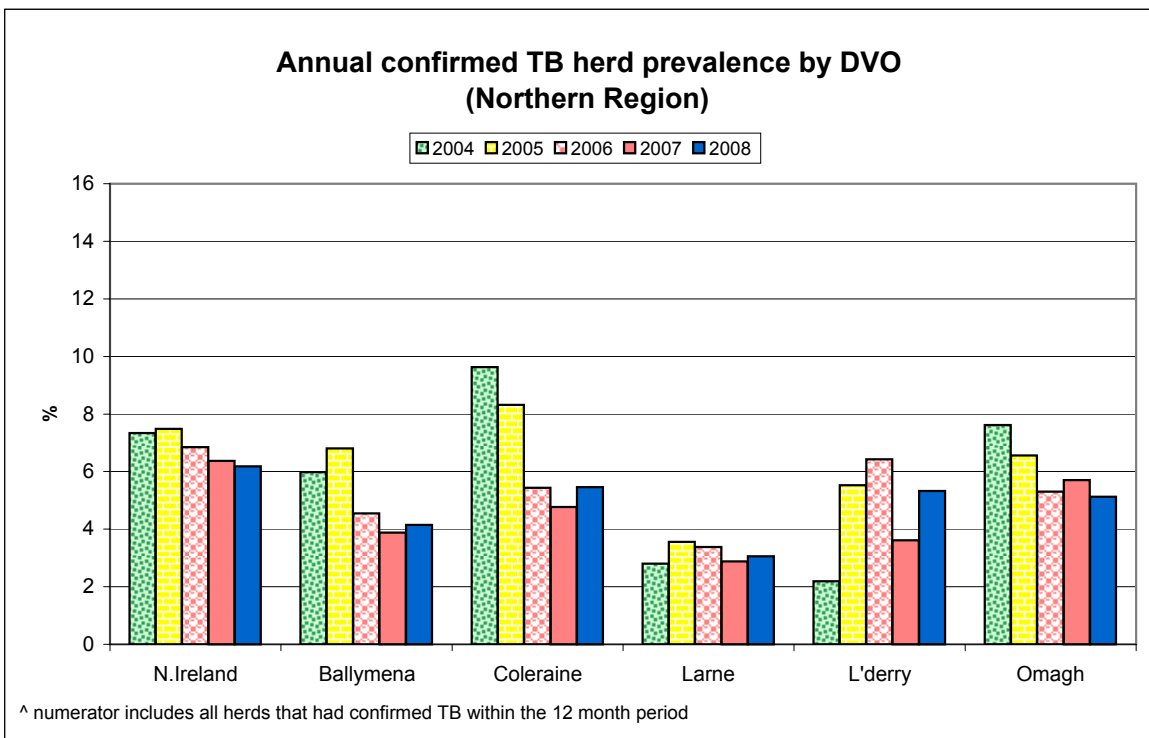
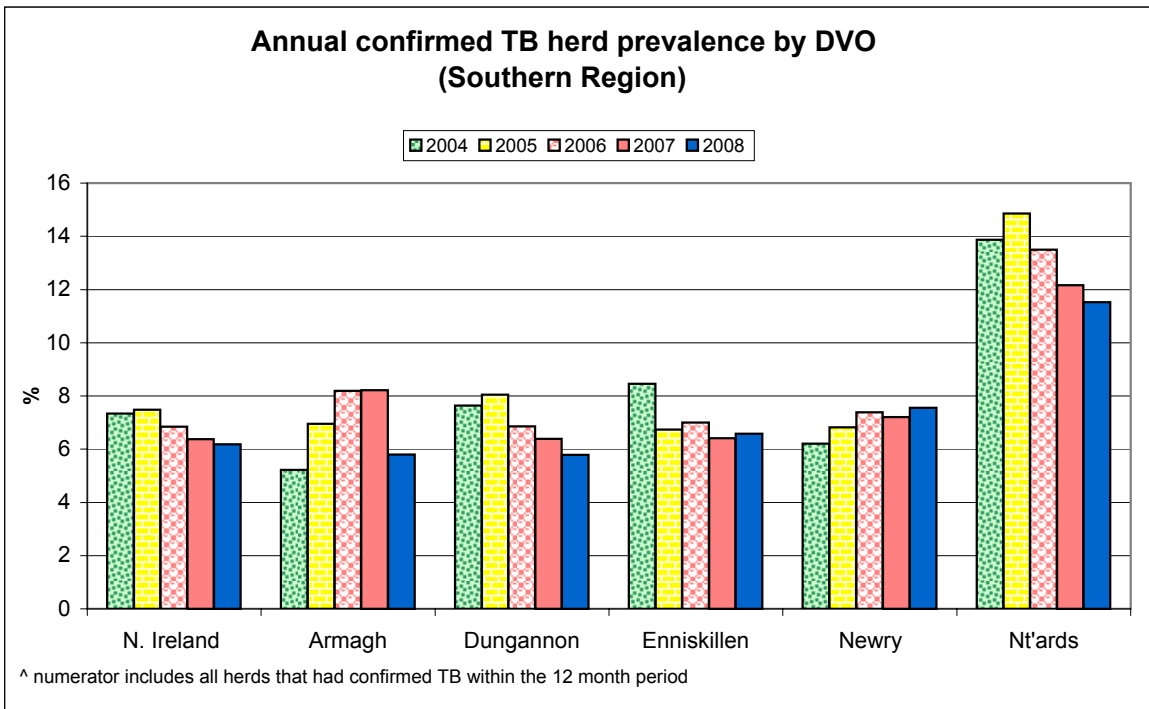


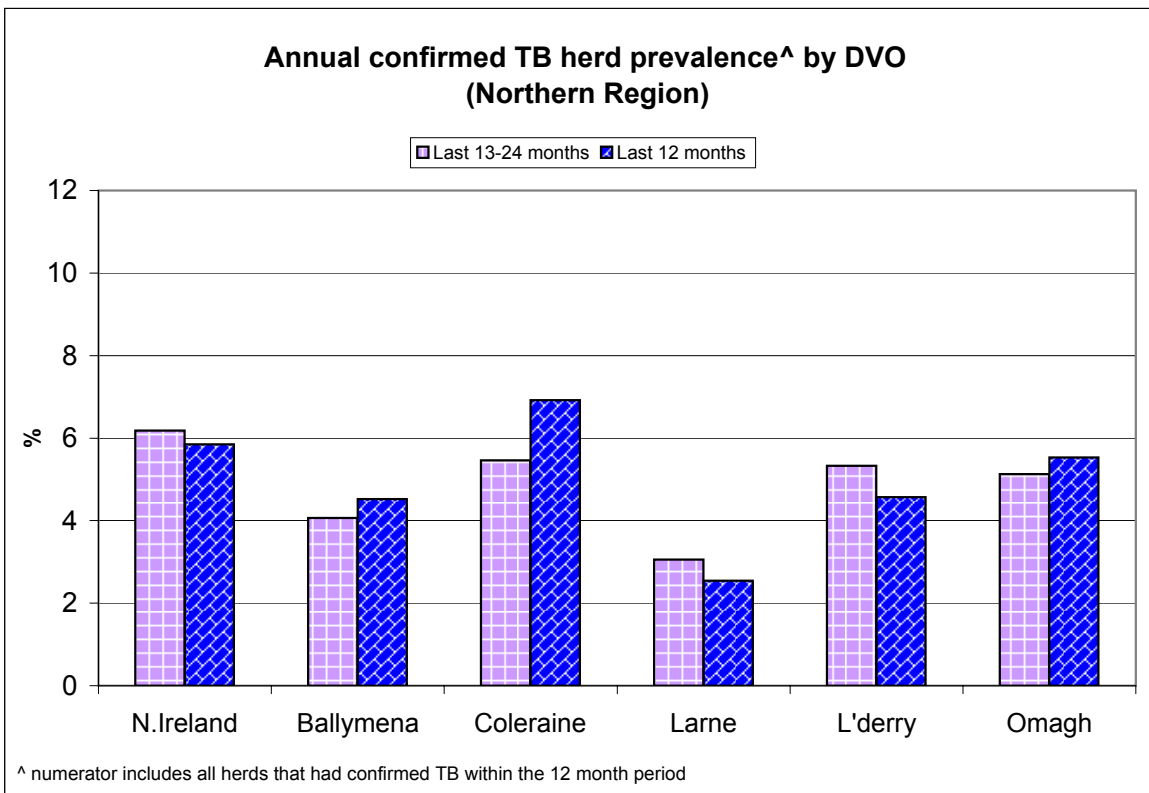
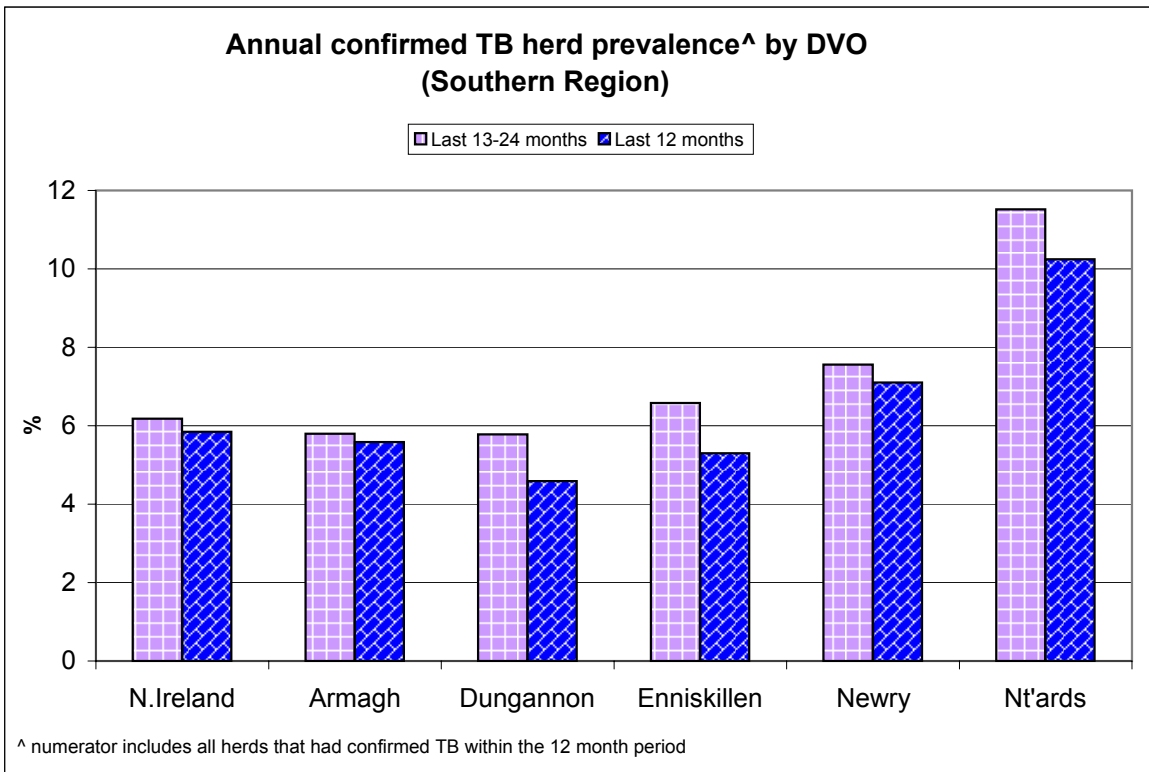
TB Reactors: January 1995 to April 2010

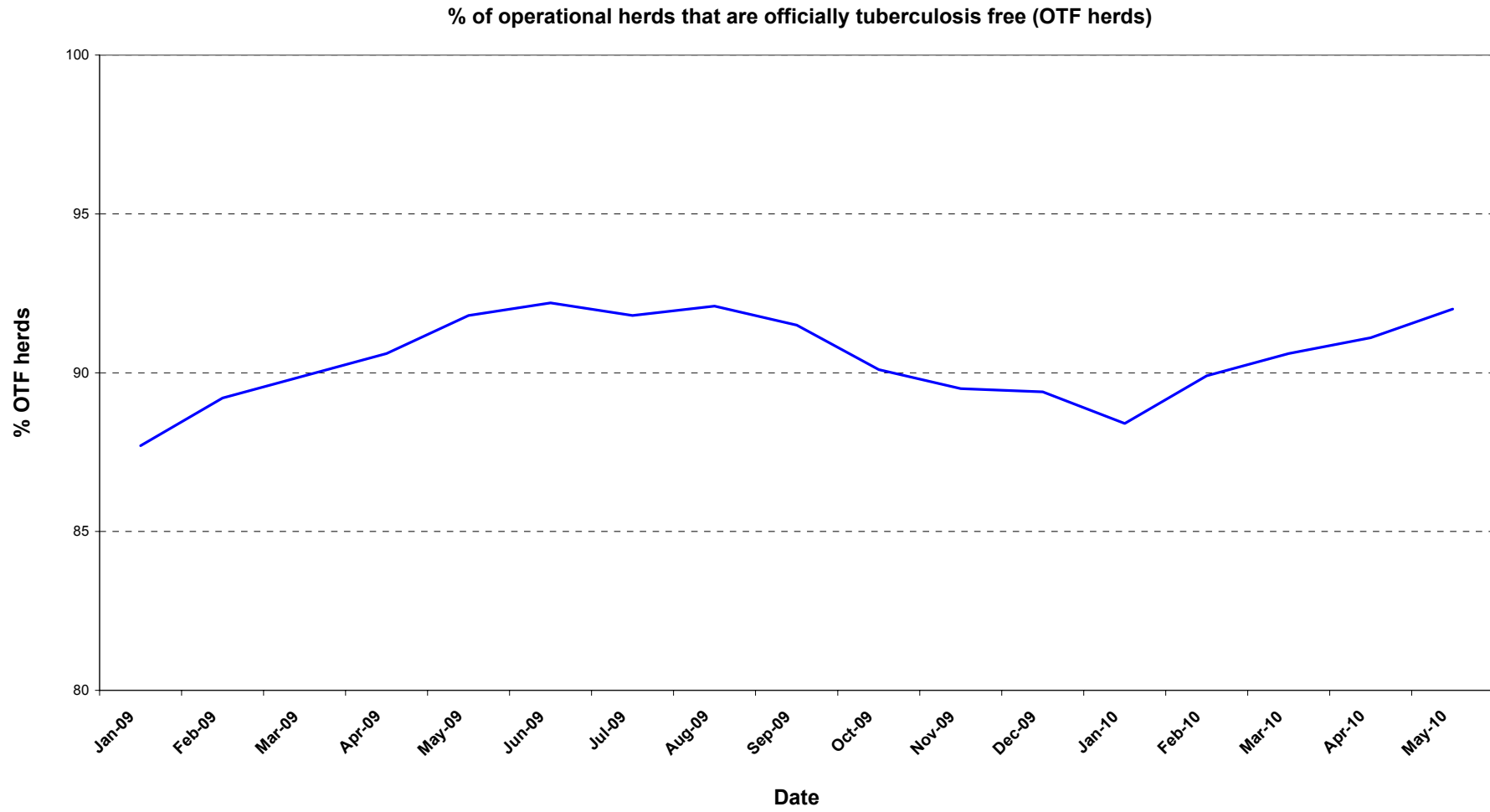












Month = April 2010

Ref.	Total	Armagh	Ballymena	Coleraine	Dungannon	Enniskillen	Larne	L'derry	Newry	Nt'ards	Omagh	
d1	No. of herds with TB reactors during month	186	18	7	25	27	25	11	2	34	19	18
d2	No. of new reactor herds during month	112	12	6	19	15	18	7	1	13	8	13
d3	No. of new reactor herds since start of year	490	44	30	73	49	53	38	12	73	55	63
d4	No. of new reactor herds in the previous 12 months	1276	117	65	170	126	152	63	42	223	157	161
d26	No. of new reactor herds in the previous 13-24 months	1299	109	58	162	145	185	60	51	242	143	144
d5	No. of TB reactor animals during month	637	28	8	43	54	188	22	9	131	120	34
d6	No. of TB reactor animals since start of year	2505	170	73	273	236	369	137	47	551	345	304
d7	No. of reactor animals in the previous 12 months	7681	934	211	749	561	1082	238	154	1749	1006	997
d27	No. of reactor animals in the previous 13-24 months	8576	1296	197	767	634	1541	226	158	1696	1345	716
d8	Herd Prevalence (%)	5.53	5.37	4.52	6.54	8.16	5.10	6.32	2.08	5.10	6.71	4.00
d20	Cumulative herd incidence in year (%)	3.86	2.01	2.15	2.85	1.73	1.72	2.25	1.39	2.01	3.04	2.05
d9	Annual herd incidence over the last 12 months (%)	5.51	5.33	4.66	6.63	4.45	4.92	3.73	4.86	6.13	8.69	5.23
d28	Annual herd incidence over the last 13-24 months (%)	5.54	4.83	4.07	6.22	5.04	5.97	3.51	5.77	6.66	7.78	4.63
d30	2009 Herd Incidence (%)	5.61	5.40	4.59	6.92	4.83	5.04	2.90	5.39	6.52	7.93	5.53
d16	2008 Herd Incidence (%)	5.57	4.27	4.14	5.14	4.92	6.74	3.72	5.68	6.75	8.35	4.93
d10	2007 Herd Incidence (%)	5.35	6.08	4.99	5.07	5.28	5.16	2.70	3.85	5.61	8.83	4.90
d11	2006 Herd Incidence (%)	6.23	6.92	5.48	6.36	5.84	6.27	4.36	6.43	6.48	9.70	4.81
d38	2005 Herd Incidence (%)	7.22	6.38	6.87	9.13	8.45	6.77	4.69	5.86	6.28	10.22	6.68
d21	Cumulative animal incidence in year (%)	0.268	0.179	0.116	0.232	0.242	0.431	0.167	0.125	0.382	0.328	0.266
d12	Annual animal incidence over the last 12 months (%)	0.477	0.558	0.189	0.351	0.288	0.679	0.173	0.245	0.756	0.586	0.479
d29	Annual animal incidence over the last 13-24 months (%)	0.530	0.767	0.175	0.363	0.320	0.924	0.165	0.253	0.747	0.778	0.344
d31	2009 Animal Incidence (%)	0.512	0.694	0.217	0.390	0.301	0.716	0.120	0.241	0.784	0.628	0.488
d15	2008 Animal Incidence (%)	0.527	0.675	0.165	0.342	0.325	0.894	0.190	0.272	0.723	0.802	0.390

d13	2007 Animal Incidence (%)	0.445	0.385	0.177	0.248	0.403	0.637	0.186	0.093	0.740	0.797	0.282
d14	2006 Animal Incidence (%)	0.548	0.496	0.170	0.279	0.459	0.934	0.205	0.230	0.862	1.000	0.304
d39	2005 Animal Incidence (%)	0.590	0.424	0.279	0.440	0.684	0.871	0.167	0.213	0.688	1.160	0.415
d34	APT during current month	2.32	0.93	0.53	1.13	1.99	6.65	1.31	0.82	2.93	3.97	1.03
d22	APT since start of year	2.42	1.63	1.07	2.05	2.22	3.90	1.55	1.11	3.48	2.94	2.45
d17	Current 12 month moving average APT	3.18	3.62	1.47	2.49	2.18	4.48	1.44	1.86	4.28	3.76	3.48
d32	2009 APT	3.41	4.49	1.68	2.82	2.25	4.63	1.01	1.89	4.46	4.05	3.55
d18	2008 APT	3.54	4.51	1.34	2.65	2.38	5.69	1.60	2.09	4.36	4.80	2.78
d19	2007 APT	3.08	2.49	1.44	1.94	2.88	4.24	1.56	0.77	4.69	4.95	2.20
d42	2006 APT	3.49	3.00	1.30	2.03	3.06	5.52	1.60	1.66	5.23	5.66	2.16
d40	2005 APT	3.65	2.58	2.01	2.86	4.28	5.44	1.25	1.67	4.08	6.28	2.73
d23	No. negative in contacts since start of year	298	36	0	7	2	67	91	0	20	29	46
d46	No. negative in contacts over last 12 months	859	129	1	7	143	127	98	3	133	56	162
d33	No. negative in contacts during 2009	707	96	1	1	152	75	9	3	134	111	125
d24	No. negative in contacts during 2008	611	117	0	35	6	49	12	5	94	200	93
d25	No. negative in contacts during 2007	589	38	3	15	49	59	14	1	40	248	122
d43	No. negative in contacts during 2006	689	4	1	58	122	106	2	14	83	240	59
d41	No. negative in contacts during 2005	1208	25	8	93	48	377	5	7	12	584	49
d47	Reactor removal time 2010	9.6	13.0	11.6	8.9	12.3	8.9	11.6	8.9	9.5	11.6	7.5
d36	Reactor removal time 2009	11.6	13.7	8.2	8.9	9.6	11.0	8.9	8.2	12.3	12.3	8.9
d37	Reactor removal time 2008	11.6	12.3	8.9	8.9	9.6	9.6	9.6	8.2	12.3	12.3	8.2
d45	Reactor removal time 2007	12.3	12.3	12.3	11.0	12.3	8.9	13.0	8.9	13.0	13.0	8.9
d35	Reactor removal time 2006	13.0	12.3	9.6	11.6	13.7	11.6	13.0	10.3	13.7	13.7	9.6
D44	Reactor removal time 2005	13.0	10.3	13.0	13.0	13.0	13.0	14.4	13.0	15.8	12.3	11.6

Tuberculosis: number of reactor herds by month and by DVO in 2010 and unique herd breakdowns during the year

2010		DVO_CODE										
Year	Month	Armagh	Ballymena	Coleraine	Dungannon	Enniskillen	Larne	L'Derry	Newry	Nt'Ards	Omagh	Total
2010	1	7	9	19	14	16	13	5	20	10	14	127
2010	2	9	7	20	7	10	11	4	18	12	17	115
2010	3	16	8	15	13	9	7	2	22	25	19	136
2010	4	12	6	19	15	18	7	1	13	8	13	112
2010	5											0
2010	6											0
2010	7											0
2010	8											0
2010	9											0
2010	10											0
2010	11											0
2010	12											0
Total		44	30	73	49	53	38	12	73	55	63	490

Unique Herd Breakdowns		DVO_CODE										
Year	Armagh	Ballymena	Coleraine	Dungannon	Enniskillen	Larne	L'Derry	Newry	Nt'Ards	Omagh	Total Herds	
2010	72	39	102	80	80	42	19	125	82	86	727	

Tuberculosis: number of reactor herds by month and by DVO in 2009 and unique herd breakdowns during the year

2009		DVO_CODE										
Year	Month	Armagh	Ballymena	Coleraine	Dungannon	Enniskillen	Larne	L'Derry	Newry	Nt'Ards	Omagh	Total
2009	1	13	14	29	15	14	7	4	28	11	19	154
2009	2	8	5	15	12	14	9	5	19	8	19	114
2009	3	15	4	18	20	9	4	2	17	16	14	119
2009	4	12	6	16	12	19	3	5	22	7	18	120
2009	5	13	2	14	6	8	1	2	8	15	5	74
2009	6	9	4	9	8	2	2	0	21	8	7	70
2009	7	12	3	8	6	19	3	3	24	17	13	108
2009	8	11	3	7	8	15	0	2	16	7	5	74
2009	9	7	2	10	15	7	1	2	15	14	5	78
2009	10	4	3	6	15	13	5	1	29	10	19	105
2009	11	9	8	17	9	18	8	6	19	17	24	135
2009	12	8	10	26	10	17	5	14	18	14	20	142
Total		121	64	175	136	155	48	46	236	144	168	1293

Unique Herd Breakdowns		DVO_CODE										
Year	Armagh	Ballymena	Coleraine	Dungannon	Enniskillen	Larne	L'Derry	Newry	Nt'Ards	Omagh	Total Herds	
2009	158	75	213	163	209	56	51	306	190	187	1608	

Tuberculosis: number of reactor herds by month and by DVO in 2008 and unique herd breakdowns during the year

2008		DVO_CODE										
Year	Month	Armagh	Ballymena	Coleraine	Dungannon	Enniskillen	Larne	L'Derry	Newry	Nt'Ards	Omagh	Total
2008	1	10	6	14	16	19	9	4	17	6	22	123
2008	2	11	4	15	16	19	7	3	28	15	23	141
2008	3	6	11	5	6	15	4	5	15	14	15	96
2008	4	7	7	12	12	20	4	2	26	14	17	121
2008	5	13	6	10	10	11	3	7	23	10	13	106
2008	6	4	2	6	2	13	1	6	19	11	8	72
2008	7	7	1	4	13	7	2	2	17	13	9	75
2008	8	4	1	7	8	13	4	2	25	17	8	89
2008	9	6	2	9	14	19	4	1	18	15	3	91
2008	10	7	4	12	10	26	3	4	22	11	9	108
2008	11	14	7	21	15	20	9	9	18	11	12	136
2008	12	6	6	15	14	20	11	4	14	13	12	115
Total		95	57	130	136	202	61	49	242	150	151	1273

Unique Herd Breakdowns		DVO_CODE										
Year	Armagh	Ballymena	Coleraine	Dungannon	Enniskillen	Larne	L'Derry	Newry	Nt'Ards	Omagh	Total Herds	
2008	128	66	158	167	248	67	56	315	215	178	1598	

A herd is defined as being a TB reactor herd if it had at least one TB reactor animal in that month and no TB reactor animals during the previous 12 months.

A TB unique herd breakdown is defined as a herd which has had at least one TB reactor during the specified calendar year irrespective of any TB reactors during the previous calendar year.

Tuberculosis: number of reactor animals by month and by DVO 2010

2010	DVO_CODE											Total
	Month	Armagh	Ballymena	Coleraine	Dungannon	Enniskillen	Larne	L'Derry	Newry	Nt'Ards	Omagh	
2010	1	19	29	113	54	67	19	22	154	47	96	620
2010	2	62	20	73	49	46	86	9	174	92	80	691
2010	3	61	16	44	79	68	10	7	92	86	94	557
2010	4	28	8	43	54	188	22	9	131	120	34	637
2010	5											0
2010	6											0
2010	7											0
2010	8											0
2010	9											0
2010	10											0
2010	11											0
2010	12											0
Total		170	73	273	236	369	137	47	551	345	304	2505

Tuberculosis: number of reactor animals by month and by DVO 2009

2009	DVO_CODE											Total
	Month	Armagh	Ballymena	Coleraine	Dungannon	Enniskillen	Larne	L'Derry	Newry	Nt'Ards	Omagh	
2009	1	125	47	98	80	124	9	15	194	96	58	846
2009	2	99	6	105	46	103	30	7	130	118	81	725
2009	3	133	38	67	74	66	12	5	120	105	59	679
2009	4	63	12	81	66	170	9	13	155	97	106	772
2009	5	169	10	38	30	53	2	2	106	59	147	616
2009	6	67	21	29	23	53	2	0	140	50	43	428
2009	7	130	12	41	27	129	12	49	161	90	40	691
2009	8	96	15	22	44	124	0	11	189	36	78	615
2009	9	145	7	75	62	80	2	3	177	97	21	669
2009	10	32	18	96	43	100	25	6	183	106	95	704
2009	11	57	20	78	43	91	50	10	107	156	134	746
2009	12	68	35	97	53	83	8	26	135	67	135	707
Total		1184	241	827	591	1176	161	147	1797	1077	997	8198

Tuberculosis: number of reactor animals by month and by DVO 2008

2008	DVO_CODE											Total
	Month	Armagh	Ballymena	Coleraine	Dungannon	Enniskillen	Larne	L'Derry	Newry	Nt'Ards	Omagh	
2008	1	77	26	65	86	124	15	19	80	104	96	692
2008	2	107	6	96	86	126	31	13	173	126	131	895
2008	3	42	38	62	42	60	9	8	99	173	84	617
2008	4	38	12	58	49	111	30	14	180	57	83	632
2008	5	49	25	38	32	79	27	10	98	192	70	620
2008	6	24	3	85	43	73	2	6	157	54	105	552
2008	7	79	3	12	48	119	10	12	114	135	57	589
2008	8	37	5	49	48	115	32	12	186	131	32	647
2008	9	87	4	22	61	140	10	3	71	144	9	551
2008	10	29	9	29	26	181	25	32	222	95	16	664
2008	11	304	31	99	44	221	34	36	144	116	39	1068
2008	12	267	14	82	66	150	26	7	105	62	84	863
Total		1140	176	697	631	1499	251	172	1629	1389	806	8390

A TB reactor animal is defined as an animal where the manual interpretation field for a skin test is positive ('P') with the first test date being taken as the time at which the animal became a reactor.

Animals with lesions at routine slaughter ('LRS') are not taken into account.

Month = April 2010

Ref.	Total	Armagh	Ballymena	Coleraine	Dungannon	Enniskillen	Larne	L'derry	Newry	Nt'ards	Omagh
b16 No. herds with any test completed in month	3910	392	200	451	403	544	238	117	720	325	520
b17 No. herds with any test, from start of year	13662	1332	826	1461	1484	1705	1037	495	2384	1104	1834
b29 All herds with any test, from start of year	14134	1383	860	1511	1544	1734	1080	518	2459	1160	1885
b18 No. herds with any test, from start of year (no cattle)	472	51	34	50	60	29	43	23	75	56	51
b19 No. herds with herd test completed in month	3363	335	155	382	331	490	174	96	667	283	450
b20 No. herds with herd test, from start of year	12678	1220	740	1310	1353	1622	933	459	2307	1040	1694
b30 All herds with herd test, from start of year	13149	1271	774	1360	1413	1649	976	483	2382	1096	1745
b21 No. herds with herd test, from start of year (no cattle)	471	51	34	50	60	27	43	24	75	56	51
b22 No. herds with herd test during last 12 months	23153	2194	1395	2564	2830	3090	1691	864	3640	1807	3078
b31 No. herds with herd test during last 13-24 months	23434	2255	1426	2606	2878	3098	1708	884	3631	1839	3109
b32 No. herds with herd test during 2009	23031	2240	1394	2529	2814	3078	1653	854	3617	1816	3036
b28 No. herds with herd test during 2008	22835	2227	1376	2527	2767	2995	1638	863	3585	1797	3060
b23 No. herds with herd test during 2007	23642	2253	1444	2664	2881	3119	1702	858	3690	1891	3140
b24 No. herds with herd test during 2006	24301	2369	1496	2706	2944	3173	1743	933	3766	1948	3223
b39 No. herds with herd test during 2005	24820	2430	1529	2826	3031	3204	1771	904	3840	2005	3280
b25 No. herds with any risk test completed	6177	691	304	571	513	753	329	159	1543	538	776
b26 No. herds with herd risk test completed	4309	503	156	289	242	582	119	74	1393	406	545
b27 No. herds with restricted herd test completed	1481	138	84	196	172	155	75	48	271	178	164

Month = April 2010

Ref	Total	Armagh	Ballymena	Coleraine	Dungannon	Enniskillen	Larne	L'derry	Newry	Nt'ards	Omagh	
c1	Total number of tests in current month	4278	451	216	493	457	571	264	130	769	362	565
c2	Total number of tests from start of year	17387	1756	1043	1920	2017	2077	1358	644	2841	1420	2311
c3	No. tests during the same time period in the previous year	17758	1932	1044	1893	2132	2231	1324	615	2867	1532	2188
c4	% change between years	-2.1	-10.0	-0.1	1.4	-5.7	-7.4	2.5	4.5	-0.9	-7.9	5.3
c5	No. tests in the previous 12 months	42343	4512	2297	4449	5020	5274	2757	1395	7569	3575	5495
c6	No. animal tests in current month	274228	29950	14990	38128	27165	28278	16768	11002	44710	30202	33035
c7	No. animal tests from start of year	1036286	104108	68218	133100	106138	94724	88249	42263	158272	117381	123833
c8	No. animal tests during the same time period in the previous year	1028704	109599	68213	125981	111818	107474	82033	37257	152560	115492	118277
c9	% change between years	0.7	-5.3	0.0	5.3	-5.4	-13.5	7.0	11.8	3.6	1.6	4.5
c10	No. animal tests in previous 12 months	2411870	258179	143060	300416	257465	241261	165634	82918	408390	267908	286639
c11	No. cattle eligible for TB testing	1601606	154035	112676	210340	186984	160827	138140	63518	206625	164454	204007
c12	No. cattle herds eligible for TB testing	26143	2560	1579	2905	3173	3352	1920	1022	4083	2090	3459
c13	No. restricted herd tests during month	606	51	36	96	61	69	31	21	92	69	80
c14	No. animals tested	91997	8729	5690	15592	9254	6859	5658	4885	12931	12245	10154
c15	No. herd tests during month	3363	335	155	382	331	490	174	96	667	283	450
c16	No. animals tested	271618	29513	14783	37821	26910	28005	16427	10917	44504	29968	32770
c17	No. individual tests during month	915	116	61	111	126	81	90	34	102	79	115
c18	No. animals tested	2610	437	207	307	255	273	341	85	206	234	265
c23	No. animals TB tested since start of year	936209	95147	62917	117670	97372	85700	81852	37651	144100	105289	114203
c19	No. animals TB tested in previous 12 months	1611182	167425	111525	213497	195081	159433	137877	62843	231344	171541	207989
c24	No. animals TB tested in previous 13-24 months	1619222	168910	112262	211560	197826	166742	137091	62382	227078	172919	208160
c25	No. animals TB tested in 2009	1601500	170614	110939	212118	196296	164205	134507	60943	229310	171602	204195
c22	No. animals TB tested in 2008	1591976	168976	106828	203947	194163	167759	132370	63159	225200	173199	206849
c20	No. animals TB tested in 2007	1640552	172852	114560	215201	199652	174151	136324	62184	225462	178638	205208
c21	No. animals TB tested in 2006	1711870	182776	120699	220008	210854	182488	144582	69516	234093	185689	215645
c26	No. animals TB tested in 2005	1776064	183292	125632	237269	222514	184630	151248	66659	234585	191843	226983

Month = May 2010

Ref		Total	Armagh	Ballymena	Coleraine	Dungannon	Enniskillen	Larne	L'derry	Newry	Nt'ards	Omagh
f1	No. of Officially Tuberculosis Free Herds (OTF)	24424	2360	1563	2755	2986	3176	1835	985	3545	1923	3296
f2	No. of Officially Tuberculosis Suspended Herds (OTS)	1087	162	43	84	111	94	105	21	229	87	151
f3	No. of Officially Tuberculosis Withdrawn Herds (OTW)	1040	125	48	132	124	99	51	28	210	123	100
f4	% herds that are OTF	92.0	89.2	94.5	92.7	92.7	94.3	92.2	95.3	89.0	90.2	92.9
f5	% herds that are OTS	4.1	6.1	2.6	2.8	3.4	2.8	5.3	2.0	5.7	4.1	4.3
f6	% herds that are OTW	3.9	4.7	2.9	4.4	3.8	2.9	2.6	2.7	5.3	5.8	2.8

Month = December 2009												
Ref	(Data lagged by 4 months)	Total	Armagh	Ballymena	Coleraine	Dungannon	Enniskillen	Larne	L'derry	Newry	Nt'ards	Omagh
e1	No. TB animals found at routine slaughter in current year	620	68	39	63	68	28	16	15	164	93	66
e19	No. TB animals found at routine slaughter in last 12 months	620	68	39	63	68	28	16	15	164	93	66
e20	No. TB animals found at routine slaughter in last 13-24 months	640	73	33	51	92	47	19	6	153	106	60
e6	No. TB animals found at routine slaughter in 2008	640	73	33	51	92	47	19	6	153	106	60
e2	No. TB animals found at routine slaughter in 2007	695	103	31	32	95	60	21	13	169	107	64
e3	No. TB animals found at routine slaughter in 2006	640	81	22	41	86	54	34	16	144	111	51
e4	No. TB animals found at routine slaughter in 2005	656	82	23	46	89	56	22	18	123	146	51
e5	No. TB animals found at routine slaughter in 2004	774	78	38	87	98	53	46	9	152	136	77
e7	No. herds with TB found at routine slaughter in current year	404	47	21	45	47	20	15	13	83	63	50
e21	No. herds with TB found at routine slaughter in last 12 months	404	47	21	45	47	20	15	13	83	63	50
e22	No. herds with TB found at routine slaughter in last 13-24 months	450	60	16	37	68	36	18	6	90	72	47
e12	No. herds with TB found at routine slaughter in 2008	450	60	16	37	68	36	18	6	90	72	47
e8	No. herds with TB found at routine slaughter in 2007	513	71	14	25	67	55	20	10	116	85	50
e9	No. herds with TB found at routine slaughter in 2006	461	63	19	33	65	43	28	16	80	77	37
e10	No. herds with TB found at routine slaughter in 2005	542	67	21	42	69	47	22	17	103	109	45
e11	No. herds with TB found at routine slaughter in 2004	630	66	32	72	87	43	36	9	129	99	57
e13	% of TB animals that were LRS in current year	7.0	5.4	13.9	7.1	10.3	2.3	9.0	9.3	8.4	7.9	6.2
e23	% of TB animals that were LRS in last 12 months	7.0	5.4	13.9	7.1	10.3	2.3	9.0	9.3	8.4	7.9	6.2
e24	% of TB animals that were LRS in last 13-24 months	7.1	6.0	15.8	6.8	12.7	3.0	7.0	3.4	8.6	7.1	6.9
e18	% of TB animals that were LRS in 2008	7.1	6.0	15.8	6.8	12.7	3.0	7.0	3.4	8.6	7.1	6.9
e14	% of TB animals that were LRS in 2007	8.7	13.4	13.2	5.7	10.6	5.1	7.6	18.3	9.2	7.0	10.0
e15	% of TB animals that were LRS in 2006	6.4	8.2	9.7	6.3	8.2	3.1	10.3	9.1	6.7	5.6	7.2
e16	% of TB animals that were LRS in 2005	5.9	9.5	6.1	4.2	5.5	3.4	8.0	11.3	7.1	6.2	5.1
e17	% of TB animals that were LRS in 2004	4.9	8.5	6.9	5.5	4.3	1.7	6.5	9.9	7.1	4.7	5.1

Month = December 2009												
Ref	(Data lagged by 4 months)	Total	Armagh	Ballymena	Coleraine	Dungannon	Enniskillen	Larne	L'derry	Newry	Nt'ards	Omagh
g1	No. of confirmed TB reactors during current year	3281	341	96	419	269	458	61	86	585	444	522
g31	No. of confirmed TB reactors during last 12 months	3281	341	96	419	269	458	61	86	585	444	522
g32	No. of confirmed TB reactors during last 13-24 months	3298	425	76	329	231	536	75	102	514	590	420
g6	No. of confirmed TB reactors 2008	3298	425	76	329	231	536	75	102	514	590	420
g2	No. of confirmed TB reactors 2007	3204	306	102	273	370	523	92	37	537	640	324
g3	No. of confirmed TB reactors 2006	3973	407	84	296	370	721	73	87	787	829	319
g4	No. of confirmed TB reactors 2005	3990	292	155	352	450	533	50	65	702	996	395
g5	No. of confirmed TB reactors 2004	4950	336	231	606	574	677	150	26	669	1133	548
g7	Total animals with confirmed TB during current year	3901	409	135	482	337	486	77	101	749	537	588
g33	Total animals with confirmed TB during last 12 months	3901	409	135	482	337	486	77	101	749	537	588
g34	Total animals with confirmed TB in last 13-24 months	3938	498	109	380	323	583	94	108	667	696	480
g12	Total animals with confirmed TB in 2008	3938	498	109	380	323	583	94	108	667	696	480
g8	Total animals with confirmed TB in 2007	3899	409	133	305	465	583	113	50	706	747	388
g9	Total animals with confirmed TB in 2006	4613	488	106	337	456	775	107	103	931	940	370
g10	Total animals with confirmed TB in 2005	4646	374	178	398	539	589	72	83	825	1142	446
g11	Total animals with confirmed TB in 2004	5724	414	269	693	672	730	196	35	821	1269	625
g13	Confirmed TB animal prevalence in current year (%)	0.244	0.240	0.122	0.227	0.172	0.296	0.057	0.166	0.327	0.313	0.288
g35	Confirmed TB animal prevalence in last 12 months (%)	0.244	0.240	0.122	0.227	0.172	0.296	0.057	0.166	0.327	0.313	0.288
g36	Confirmed TB animal prevalence in last 13-24 months (%)	0.247	0.295	0.102	0.186	0.166	0.348	0.071	0.171	0.296	0.402	0.232
g18	Confirmed TB animal prevalence in 2008 (%)	0.247	0.295	0.102	0.186	0.166	0.348	0.071	0.171	0.296	0.402	0.232
g14	Confirmed TB animal prevalence in 2007 (%)	0.240	0.237	0.116	0.142	0.233	0.335	0.083	0.080	0.313	0.418	0.189
g15	Confirmed TB animal prevalence in 2006 (%)	0.228	0.267	0.088	0.153	0.216	0.425	0.074	0.148	0.398	0.506	0.172
g16	Confirmed TB animal prevalence in 2005 (%)	0.260	0.204	0.142	0.168	0.242	0.319	0.048	0.125	0.352	0.595	0.196
g17	Confirmed TB animal prevalence in 2004 (%)	0.290	0.243	0.242	0.327	0.342	0.445	0.146	0.057	0.358	0.740	0.306

g19	No. herds with confirmed TB in current year	1347	125	63	175	129	163	42	39	257	186	168
g37	No. herds with confirmed TB in last 12 months	1347	125	63	175	129	163	42	39	257	186	168
g38	No. herds with confirmed TB in last 13-24 months	1412	129	57	138	160	197	50	46	271	207	157
g24	No. herds with confirmed TB in 2008	1412	129	57	138	160	197	50	46	271	207	157
g20	No. herds with confirmed TB in 2007	1507	185	56	127	184	200	49	31	266	230	179
g21	No. herds with confirmed TB in 2006	1664	194	68	147	202	222	59	60	278	263	171
g22	No. herds with confirmed TB in 2005	1856	169	104	235	244	216	63	50	262	298	215
g23	No. herds with confirmed TB in 2004	1861	129	95	277	239	277	53	21	238	280	252
g25	Confirmed TB herd prevalence in current year (%)	5.85	5.58	4.52	6.92	4.58	5.30	2.54	4.57	7.11	10.24	5.53
g39	Confirmed TB herd prevalence in last 12 months (%)	5.85	5.58	4.52	6.92	4.58	5.30	2.54	4.57	7.11	10.24	5.53
g40	Confirmed TB herd prevalence in last 13-24 months (%)	6.18	5.79	4.14	5.46	5.78	6.58	3.05	5.33	7.56	11.52	5.13
g30	Confirmed TB herd prevalence in 2008 (%)	6.18	5.79	4.14	5.46	5.78	6.58	3.05	5.33	7.56	11.52	5.13
g26	Confirmed TB herd prevalence in 2007 (%)	6.37	8.21	3.88	4.77	6.39	6.41	2.88	3.61	7.21	12.16	5.70
g27	Confirmed TB herd prevalence in 2006 (%)	6.85	8.19	4.55	5.43	6.86	7.00	3.38	6.43	7.38	13.50	5.31
g28	Confirmed TB herd prevalence in 2005 (%)	7.48	6.95	6.80	8.32	8.05	6.74	3.56	5.53	6.82	14.86	6.55
g29	Confirmed TB herd prevalence in 2004 (%)	7.34	5.23	5.98	9.63	7.64	8.45	2.80	2.19	6.21	13.87	7.62

Explanatory Comments for Tuberculosis Statistics - B. Testing Herds

B16	No. herds with any test completed in month	Test of any disease status and size (herd or animal-level). Tests with no animals are excluded.
B17	No. herds with any test, from start of year	Test of any disease status and size (herd or animal-level) carried out on a herd since 1st January. Tests with no animals are excluded.
B29	All herds with any test, from start of year	Skin test of any disease status and size (herd or animal-level) carried out on a herd since 1st January. Tests with no animals are included.
B18	No. herds with any test, from start of year (no cattle)	Herd or individual test of any disease status (routine, risk or restricted) where no cattle were recorded at all such tests since 1st January
B19	No. herds with herd test completed in month	Herd level test of any disease status (routine, risk or restricted) completed during the above month. Tests with no animals are excluded.
B20	No. herds with herd test, from start of year	Herd level test of any disease status (routine, risk or restricted) completed since 1st January. Tests with no animals are excluded.
B30	All herds with herd test, from start of year	Herd level test of any disease status (routine, risk or restricted) completed since 1st January. Tests with no animals are included.
B21	No. herds with herd test, from start of year (no cattle)	Herd level test of any disease status (routine, risk or restricted) where no cattle were recorded at all such herd tests since 1st January.
B22	No. herds with herd test during last 12 months	Herd level test of any disease status (routine, risk or restricted) completed in the 12 month period from the above month. Tests with no animals are excluded.
B31	No. herds with herd test during last 13-24 months	Herd level test of any disease status (routine, risk or restricted) completed in the 13-24 months from the above month. Tests with no animals are excluded.
B39	No. herds with herd test during 2005	Herd level test of any disease status (routine, risk or restricted) completed in the calendar year. Tests with no animals are excluded.
B32	No. herds with herd test during 2009	Herd level test of any disease status (routine, risk or restricted) completed in the calendar year. Tests with no animals are excluded.
B28	No. herds with herd test during 2008	Herd level test of any disease status (routine, risk or restricted) completed in the calendar year. Tests with no animals are excluded.
B23	No. herds with herd test during 2007	Herd level test of any disease status (routine, risk or restricted) completed in the calendar year. Tests with no animals are excluded.
B24	No. herds with herd test during 2006	Herd level test of any disease status (routine, risk or restricted) completed in the calendar year. Tests with no animals are excluded.
B25	No. herds with any risk test completed	Herd has had a herd or individual level risk test since start of calendar year and number tested > 0
B26	No. herds with herd risk test completed	Herd has had a herd level risk test since start of calendar year and number tested > 0.
B27	No. herds with restricted herd test completed	Herd has had a restricted herd test (RHT, RH1, RH2) since start of calendar year and number tested

Explanatory Comments for Tuberculosis Statistics - C. Testing Animals

Ref	Data Title	Explanation
C1	Total number of tests in current month	Number of herds and individual tests performed in the month stated above. Tests with no animals are excluded
C2	Total number of tests from start of year	From 1st January. Tests with no animals are excluded.
C3	No. tests during the same time period in the previous year	From 1st January of previous year. Tests with no animals are excluded.
C4	% change between years	Difference between the number of tests carried out during the current year and the number carried out in the previous expressed as a percentage.
C5	No. tests in the previous 12 months	Last 12 month period from the above month. Tests with no animals are excluded.
C6	No. animal tests in current month	Animal test = a count of the number of animals tested within each herd or individual test. Some animals may have been tested multiple times during the year.
C7	No. animal tests from start of year	Number of animal tests carried out since 1st January.
C8	No. animal tests during the same time period in the previous year	Number of animal tests carried out from 1st January in the previous year over the same time interval as recorded for the current year.
C9	% change between years	Difference between the number of animal tests during the current year and the number carried out in the previous expressed as a percentage.
C10	No. animal tests in previous 12 months	Last 12 month period from the above month.
C11	No. cattle eligible for TB testing	Based on the average number of animals presented at TB herd tests over last 4 years.
C12	No. cattle herds eligible for TB testing	Based on cattle being presented for a TB herd tests over last 4 years. Herds with '0' cattle are excluded.
C13	No. restricted herd tests during month	All restricted herd tests (RHT, RH1 and RH2) carried out during the above month.
C14	No. animals tested	Total of the animals reported as being tested within restricted herd tests (RHT, RH1, RH2) during the above month.
C15	No. herd tests during month	Total of the animals reported as being tested within all herd tests during the above month.
C16	No. animals tested	Total of the animals reported as being tested within all herd tests during the above month.
C17	No. individual tests during month	Total of the animals reported as being tested within all individual tests during the above month.
C18	No. animals tested	Total of the animals reported as being tested within all individual tests during the above month.
C23	No. animals TB tested since start of year	Animals identified as having had at least one TB skin test since the start of the calendar year. Due to the same animals being sampled in different DVO areas, the 'Total' is not the sum of the DVO figures.
C19	No. animals TB tested in previous 12 months	Animals identified as having had at least one TB skin test during the last 12 month period from the above month. Due to the same animals being sampled in different DVO areas, the 'Total' is not the sum of the DVO figures.
C24	No. animals TB tested in previous 13-24 months	Animals identified as having had at least one TB skin test during the last 13-24 months from the above month. Due to the same animals being sampled in different DVO areas, the 'Total' is not the sum of the DVO figures
C26	No. animals TB tested in 2005	Animals identified as having had at least one TB skin test during the calendar year. Due to the same animals being sampled in different DVO areas, the 'Total' is not the sum of the DVO figures.
C25	No. animals TB tested in 2009	Animals identified as having had at least one TB skin test during the calendar year. Due to the same animals being sampled in different DVO areas, the 'Total' is not the sum of the DVO figures.
C22	No. animals TB tested in 2008	Animals identified as having had at least one TB skin test during the calendar year. Due to the same animals being sampled in different DVO areas, the 'Total' is not the sum of the DVO figures.
C20	No. animals TB tested in 2007	Animals identified as having had at least one TB skin test during the calendar year. Due to the same animals being sampled in different DVO areas, the 'Total' is not the sum of the DVO figures.
C21	No. animals TB tested in 2006	Animals identified as having had at least one TB skin test during the calendar year. Due to the same animals being sampled in different DVO areas, the 'Total' is not the sum of the DVO figures.

Explanatory Comments for Tuberculosis Statistics - D. Results

Ref	Data Title	Explanation
D1	No. of herds with TB reactors during month	A herd is included in this figure if the herd number had a TB skin test reactor during the above month.
D2	No. of new reactor herds during month	A herd is defined as being a TB reactor herd if it had at least one TB reactor animal in that month and no TB reactor animals during the previous 12 months.
D3	No. of new reactor herds since start of year	= Since 1st January
D4	No. of new reactor herds in the previous 12 months	Last 12 month period from the above month.
D26	No. of new reactor herds in previous 13-24 months	Last 13-24 month period from the above month.
D5	No. of TB reactor animals during month	A TB reactor animal is defined as an animal where the manual interpretation field for a skin test is positive ('P') with the first test date being taken as the time at which the animal became a reactor. Currently animals with lesionas at routine slaughter ("LRS")are not taken into account
D6	No. of TB reactor animals since start of year	= Since 1st January
D7	No. of reactor animals in the previous 12 months	Last 12 month period from the above month.
D27	No. of reactor animals in previous 13-24 months	Last 13-24 month period from the above month.
D8	Herd Prevalence (%)	Number of herds with a TB reactor during the above month as a proportion of cattle herds which have presented cattle for a TB herd test during the same time period.
D20	Cumulative herd incidence in year (%)	Number of NEW reactor herds since the start of the calendar year as a proportion of cattle herds which have presented cattle for a TB herd test during the same time period.
D9	Annual herd incidence over the last 12 months (%)	Number of NEW reactor herds during the last 12 months as a proportion of cattle herds which have presented cattle for a TB herd test during the same time period.
D28	Annual herd incidence over the last 13-24 months (%)	Number of NEW reactor herds during the last 13-24 months as a proportion of cattle herds which have presented cattle for a TB herd test during the same time period.
D38	2005 Herd Incidence (%)	Number of NEW reactor herds during the year as a proportion of cattle herds which have presented cattle for a TB herd test during the same time period.
D30	2009 Herd Incidence (%)	Number of NEW reactor herds during the year as a proportion of cattle herds which have presented cattle for a TB herd test during the same time period.
D16	2008 Herd Incidence (%)	Number of NEW reactor herds during the year as a proportion of cattle herds which have presented cattle for a TB herd test during the same time period.
D10	2007 Herd Incidence (%)	Number of NEW reactor herds during the year as a proportion of cattle herds which have presented cattle for a TB herd test during the same time period.
D11	2006 Herd Incidence (%)	Number of NEW reactor herds during the year as a proportion of cattle herds which have presented cattle for a TB herd test during the same time period.
D21	Cumulative animal incidence in year (%)	Number of reactor animals during the above month as a proportion of cattle which have been presented for a TB test during the same time period.
D12	Annual animal incidence over the last 12 months (%)	Number of reactor animals during the last 12 months as a proportion of cattle which have been presented for a TB test during the same time period.
D29	Annual animal incidence over the last 13-24 months (%)	Number of reactor animals during the last 13-24 months as a proportion of cattle which have been presented for a TB test during the same time period.
D39	2005 Animal Incidence (%)	Number of reactor animals during the year as a proportion of cattle which have been presented for a TB herd test during the same time period.
D31	2009 Animal Incidence (%)	Number of reactor animals during the year as a proportion of cattle which have been presented for a TB herd test during the same time period.
D15	2008 Animal Incidence (%)	Number of reactor animals during the year as a proportion of cattle which have been presented for a TB herd test during the same time period.
D13	2007 Animal Incidence (%)	Number of reactor animals during the year as a proportion of cattle which have been presented for a TB herd test during the same time period.
D14	2006 Animal Incidence (%)	Number of reactor animals during 2006 as a proportion of cattle which have been presented for a TB herd test during the same time period.

D34	APT during current month	= The reactor disclosure rate per 1,000 animal tests current calendar month.
D22	APT since start of year	The reactor disclosure rate per 1,000 animal tests since the start of the calendar year.
D17	Current 12 month moving average APT	The reactor disclosure rate per 1,000 animal tests. Current refers to the rate over the last 12 months.
D42	2006 APT	The reactor disclosure rate per 1,000 animal tests during the calendar year.
D40	2005 APT	The reactor disclosure rate per 1,000 animal tests during the calendar year.
D32	2009 APT	The reactor disclosure rate per 1,000 animal tests during the calendar year.
D18	2008 APT	The reactor disclosure rate per 1,000 animal tests during the calendar year.
D19	2007 APT	The reactor disclosure rate per 1,000 animal tests during the calendar year.
D23	No. negative in contacts since start of year	Number of animals taken as negative in contacts since the start of the year
d46	No. Negative in contacts over last 12 months (%)	= Number of negative in contacts during the last 12 months
D43	No. negative in contacts during 2006	Number of animals taken as negative in contacts during the year
D41	No. negative in contacts during 2005	Number of animals taken as negative in contacts during the year
D33	No. negative in contacts during 2004	Number of animals taken as negative in contacts during the year
D24	No. negative in contacts during 2008	Number of animals taken as negative in contacts during the year
D25	No. negative in contacts during 2007	Number of animals taken as negative in contacts during the year
D37	Reactor removal time 2008	Figures given are median values for working days estimated from calendar days (calendar days multiplied by 0.685). Reactors which are not yet slaughtered or where they they were first declared as reactors at slaughter are excluded.
D45	Reactor removal time 2007	Figures given are median values for working days estimated from calendar days (calendar days multiplied by 0.685). Reactors which are not yet slaughtered or where they they were first declared as reactors at slaughter are excluded.
D35	Reactor removal time 2006	Figures given are median values for working days estimated from calendar days (calendar days multiplied by 0.685). Reactors which are not yet slaughtered or where they they were first declared as reactors at slaughter are excluded.
D44	Reactor removal time 2005	Figures given are median values for working days estimated from calendar days (calendar days multiplied by 0.685). Reactors which are not yet slaughtered or where they they were first declared as reactors at slaughter are excluded.
D36	Reactor removal time 2009	Figures given are median values for working days estimated from calendar days (calendar days multiplied by 0.685). Reactors which are not yet slaughtered or where they they were first declared as reactors at slaughter are excluded.

Explanatory Comments for LRS Data

E1	No. TB animals found at routine slaughter in current year	Animals where M. bovis was cultured from TB-like lesions found at routine slaughter (LRS) during the year that were not identified as TB reactor animals
E19	No. TB animals found at routine slaughter in last 12 months	Animals where M. bovis was cultured from TB-like lesions found at routine slaughter (LRS) during the last 12 months that were not identified as TB reactor animals
E20	No. TB animals found at routine slaughter in last 13-24 months	Animals where M. bovis was cultured from TB-like lesions found at routine slaughter (LRS) during the last 12-24 months that were not identified as TB reactor animals
E6	No. TB animals found at routine slaughter in 2008	Animals where M. bovis was cultured from TB-like lesions found at routine slaughter (LRS) during the year that were not identified as TB reactor animals
E20	No. TB animals found at routine slaughter in 2007	Animals where M. bovis was cultured from TB-like lesions found at routine slaughter (LRS) during the year that were not identified as TB reactor animals
E3	No. TB animals found at routine slaughter in 2006	Animals where M. bovis was cultured from TB-like lesions found at routine slaughter (LRS) during the year that were not identified as TB reactor animals
E4	No. TB animals found at routine slaughter in 2005	Animals where M. bovis was cultured from TB-like lesions found at routine slaughter (LRS) during the year that were not identified as TB reactor animals
E5	No. TB animals found at routine slaughter in 2004	Animals where M. bovis was cultured from TB-like lesions found at routine slaughter (LRS) during the year that were not identified as TB reactor animals
E7	No. herds with TB found at routine slaughter in current year	Herds where M. bovis was cultured from TB-like lesions found in at least one animal at routine slaughter (LRS) during the year
E21	No. herds with TB found at routine slaughter in last 12 months	Herds where M. bovis was cultured from TB-like lesions found in at least one animal at routine slaughter (LRS) during the last 12 months
E22	No. herds with TB found at routine slaughter in last 13-24 months	Herds where M. bovis was cultured from TB-like lesions found in at least one animal at routine slaughter (LRS) during the last 13-24 months
E12	No. herds with TB found at routine slaughter in 2008	Herds where M. bovis was cultured from TB-like lesions found in at least one animal at routine slaughter (LRS) during the year
E8	No. herds with TB found at routine slaughter in 2007	Herds where M. bovis was cultured from TB-like lesions found in at least one animal at routine slaughter (LRS) during the year
E9	No. herds with TB found at routine slaughter in 2006	Herds where M. bovis was cultured from TB-like lesions found in at least one animal at routine slaughter (LRS) during the year
E10	No. herds with TB found at routine slaughter in 2005	Herds where M. bovis was cultured from TB-like lesions found in at least one animal at routine slaughter (LRS) during the year
E11	No. herds with TB found at routine slaughter in 2004	Herds where M. bovis was cultured from TB-like lesions found in at least one animal at routine slaughter (LRS) during the year
E13	% of TB animals that were LRS in current year	Herds where M. bovis was cultured from TB-like lesions found in at least one animal at routine slaughter (LRS) during the year
E23	% of TB animals that were LRS in last 12 months	Number of confirmedLRS animals divided by the number of TB reactors and confirmed LRS animals during the year expressed as a %
E24	% of TB animals that were LRS in last 13-24 months	Number of confirmedLRS animals divided by the number of TB reactors and confirmed LRS animals during the year expressed as a %
E18	% of TB animals that were LRS in 2008	Number of confirmedLRS animals divided by the number of TB reactors and confirmed LRS animals during the year expressed as a %
E14	% of TB animals that were LRS in 2007	Number of confirmedLRS animals divided by the number of TB reactors and confirmed LRS animals during the year expressed as a %
E15	% of TB animals that were LRS in 2006	Number of confirmedLRS animals divided by the number of TB reactors and confirmed LRS animals during the year expressed as a %
E16	% of TB animals that were LRS in 2005	Number of confirmedLRS animals divided by the number of TB reactors and confirmed LRS animals during the year expressed as a %
E17	% of TB animals that were LRS in 2004	Number of confirmedLRS animals divided by the number of TB reactors and confirmed LRS animals during the year expressed as a %