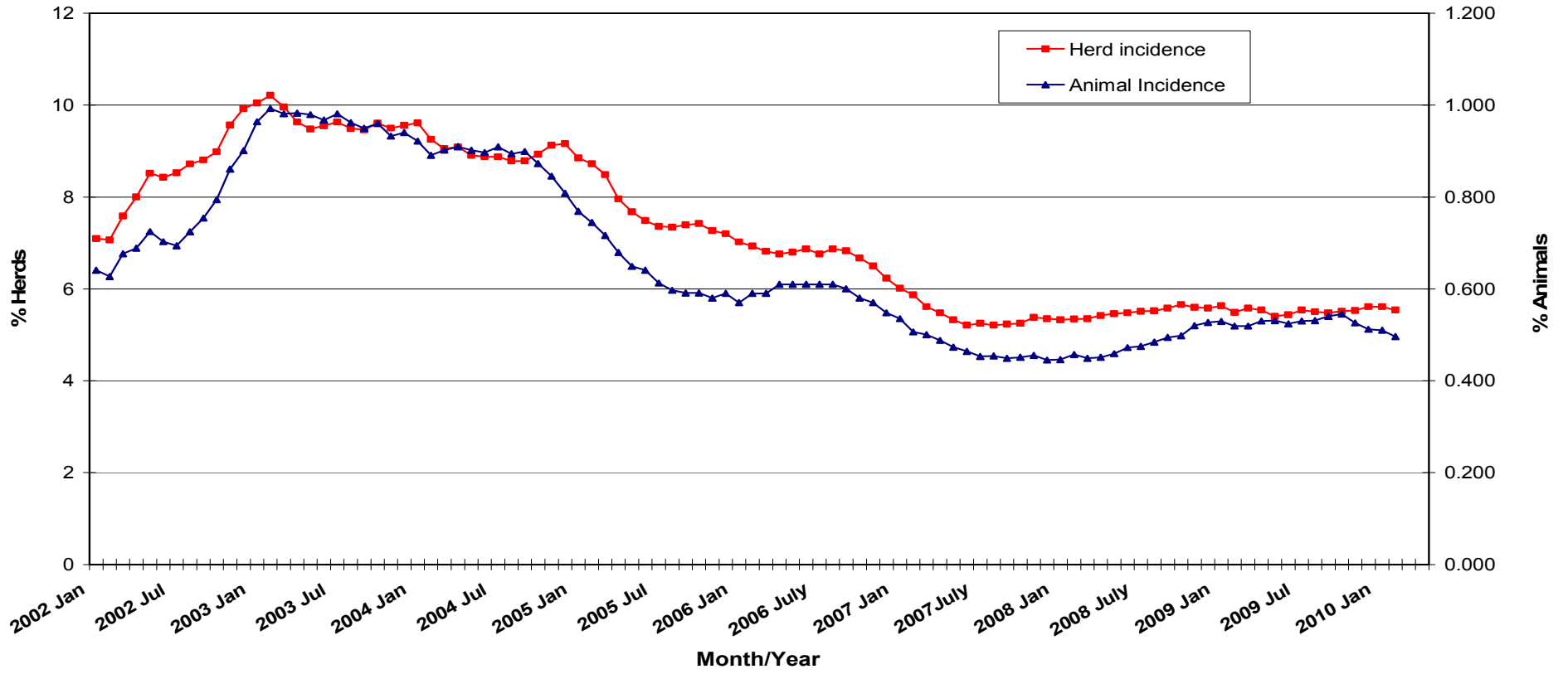
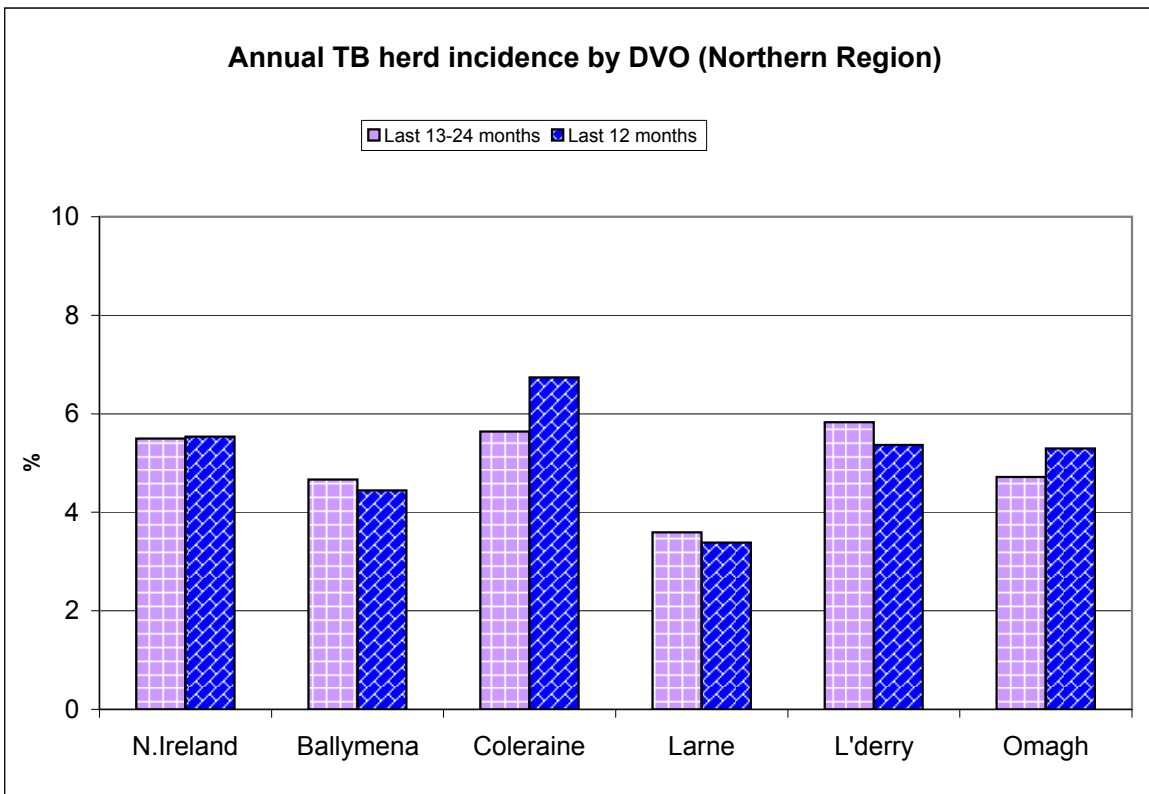
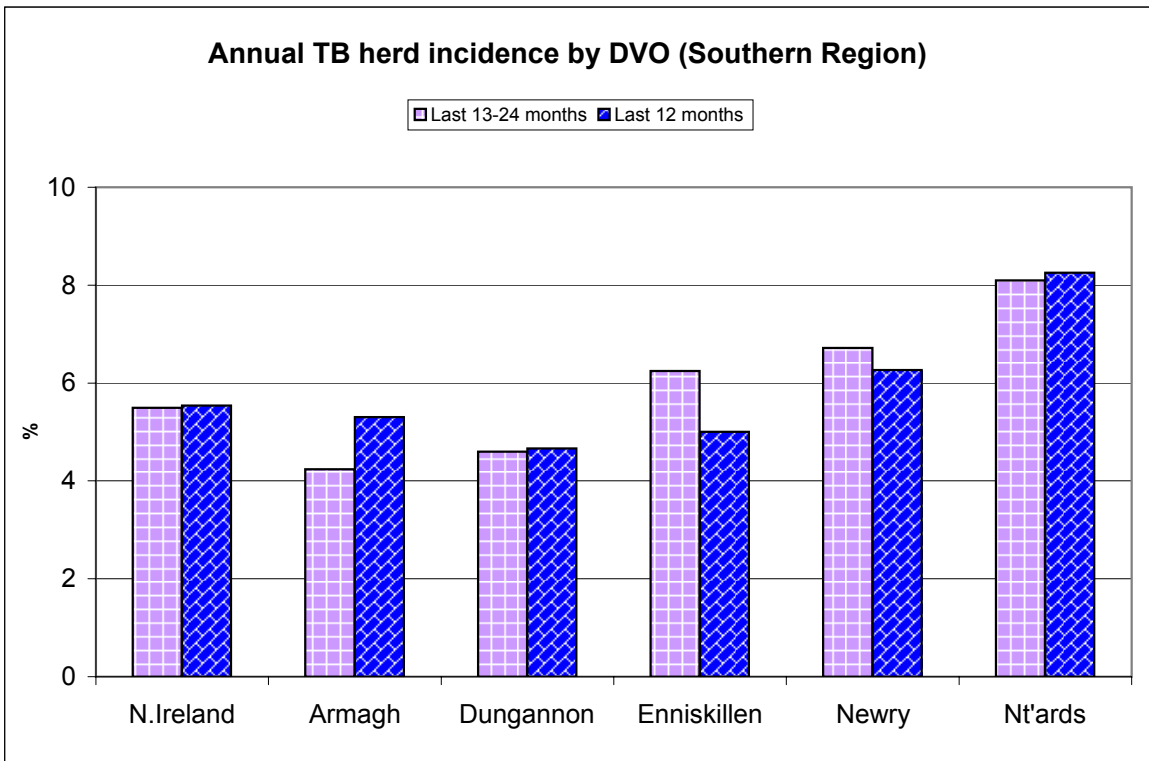


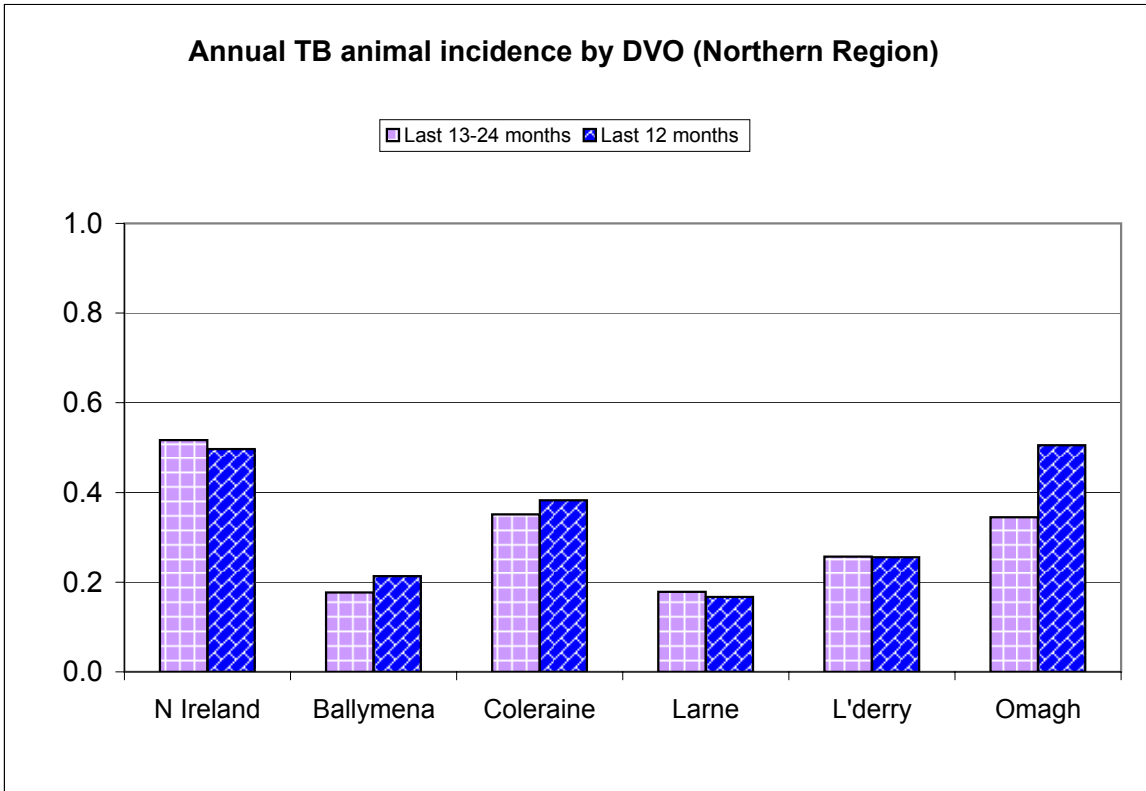
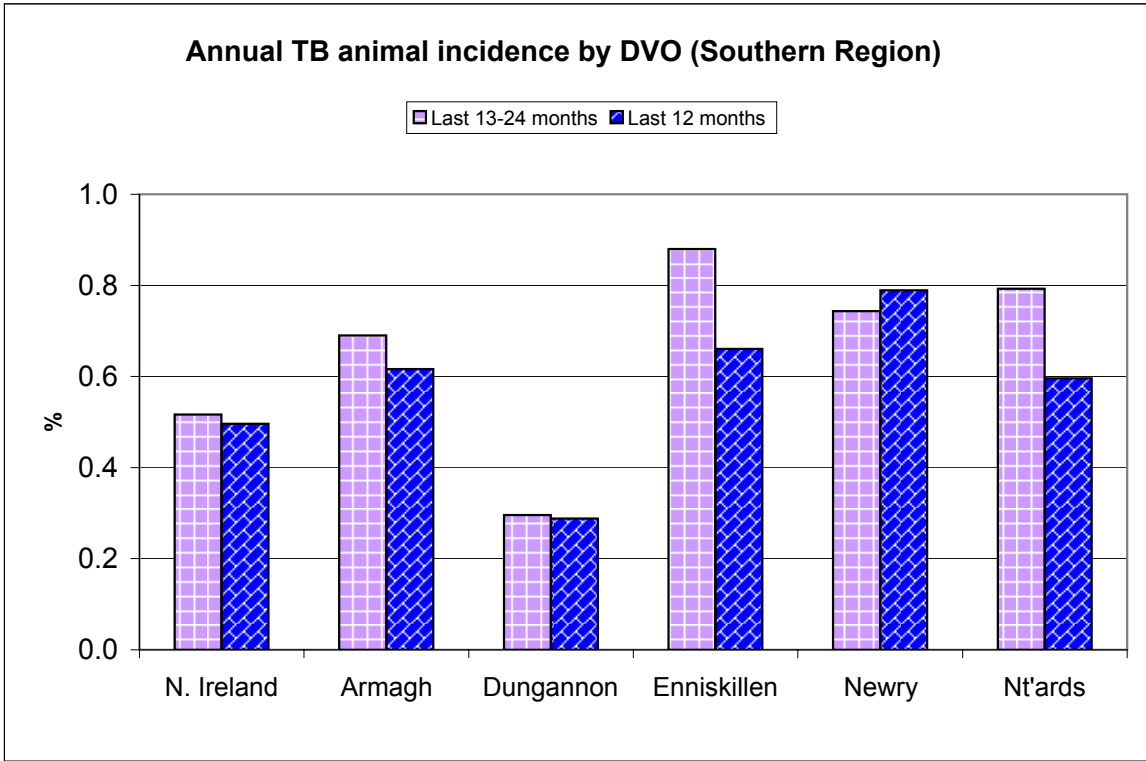
Tuberculosis: Statistics for February 2010

| | | | | |
|---|--|---|---|---------------------------------------|
| Tests Completed | Herds | Number of herds tested (any test), by DVO | Cumulative Statistics | |
| | | Number of herds with herd-level test, by DVO | Cumulative Statistics | |
| | | Number of herds with any risk test, by DVO | | |
| | | Number of herds with herd-level risk test, by DVO | | |
| | | Number of herds with herd-level restricted test, by DVO | | |
| | Animals | Total number of tests performed, by DVO | Cumulative Statistics | |
| | | Total number of animals tests, by DVO | Cumulative Statistics | |
| | | Total number of restricted herd tests, by DVO | Number of animals tested | |
| | | Total number of herd tests, by DVO | Number of animals tested | |
| | | Total number of individual tests, by DVO | Number of animals tested | |
| | | Total number of animals tested, by DVO | | |
| | Summary Statistics | Herds with TB reactors during month, by DVO | Cumulative Statistics | APT |
| | | Number of new reactor herds, by DVO | Cumulative Statistics | Negative-in-contacts |
| | | Number of new reactor animals, by DVO | | Reactor removal times |
| Herd Prevalance | | | | |
| Herd Incidence | | | | |
| Animal Incidence | | | | |
| Number of reactor animals by month and by DVO | | | | |
| Number of new reactor herds by month and by DVO | | | | |
| Summary Charts | Current Animal Incidence Chart | Monthly TB reactors chart | Yearly Confirmed Herd Prevalence | |
| | Yearly Animal Incidence Chart | New TB reactor herds | Current Confirmed Herd Prevalence | |
| | Current Herd Incidence Chart | TB Herd & Animal Incidence | | |
| | Yearly Herd Incidence Chart | | | |
| | | | | |

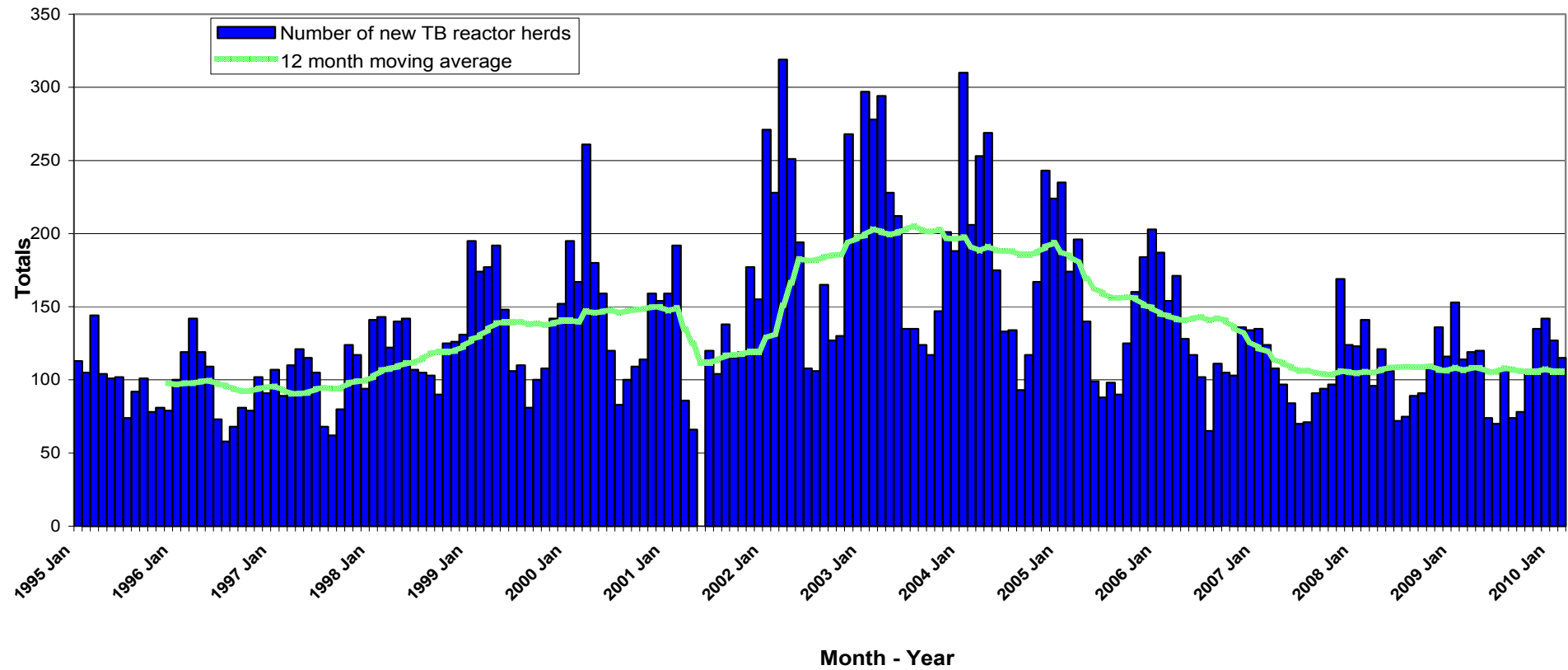
**TB Herd and Animal Incidence:
(12 month moving average: January 2002 to February 2010)**



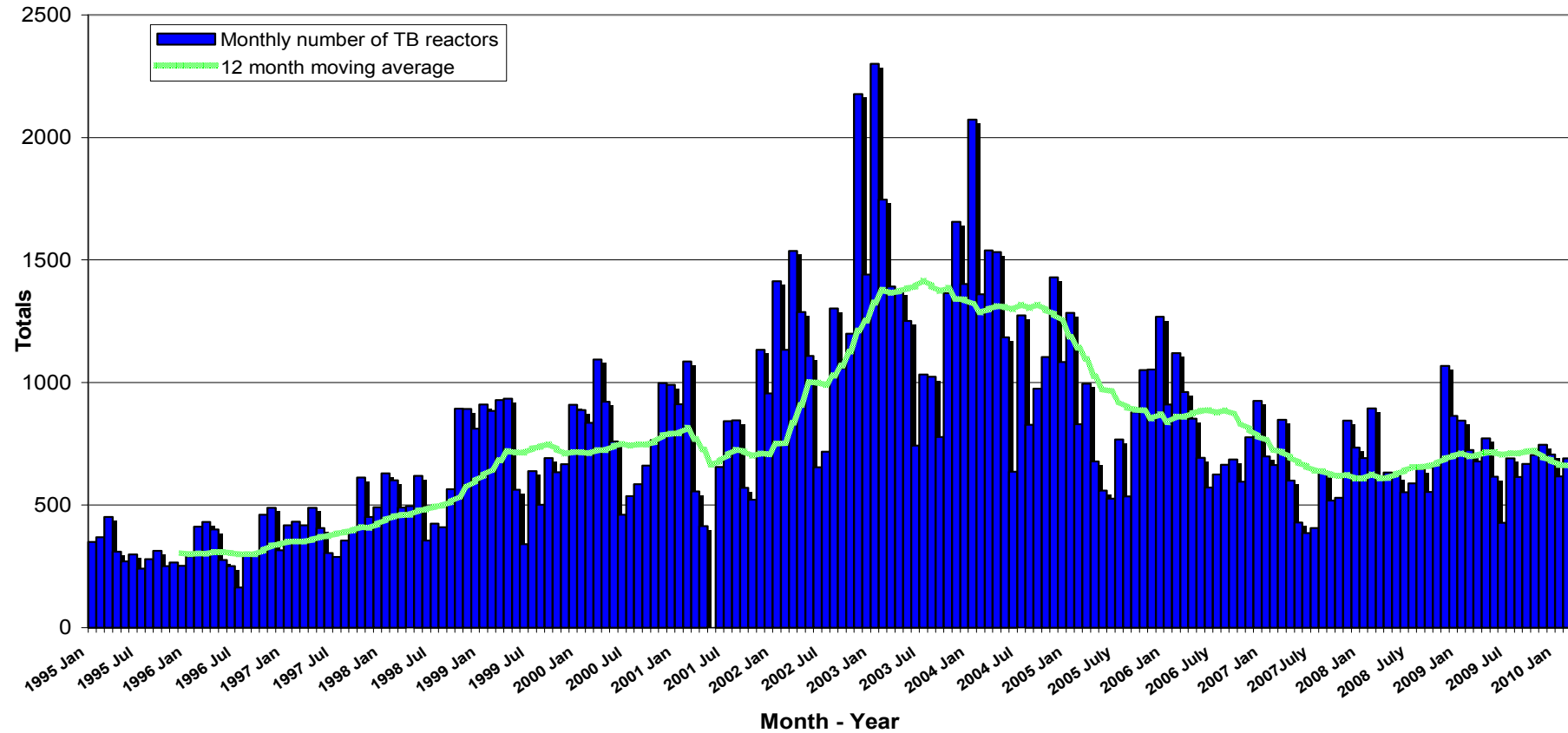


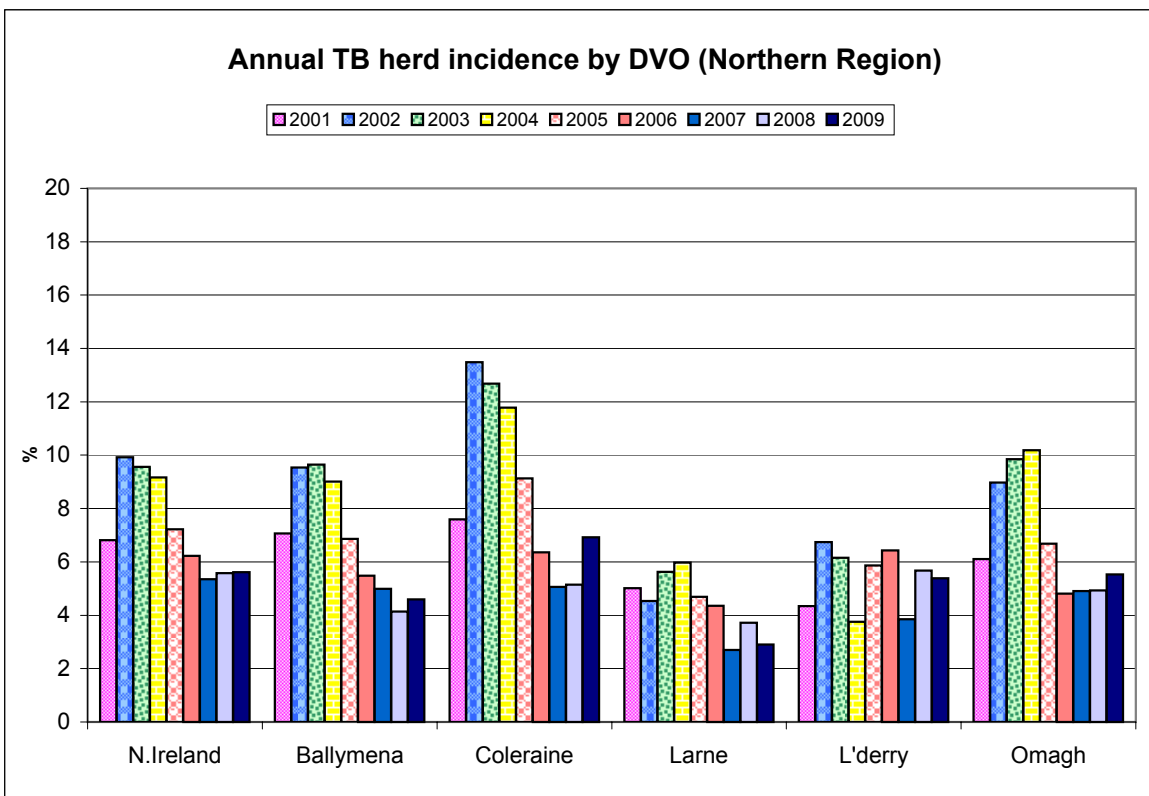
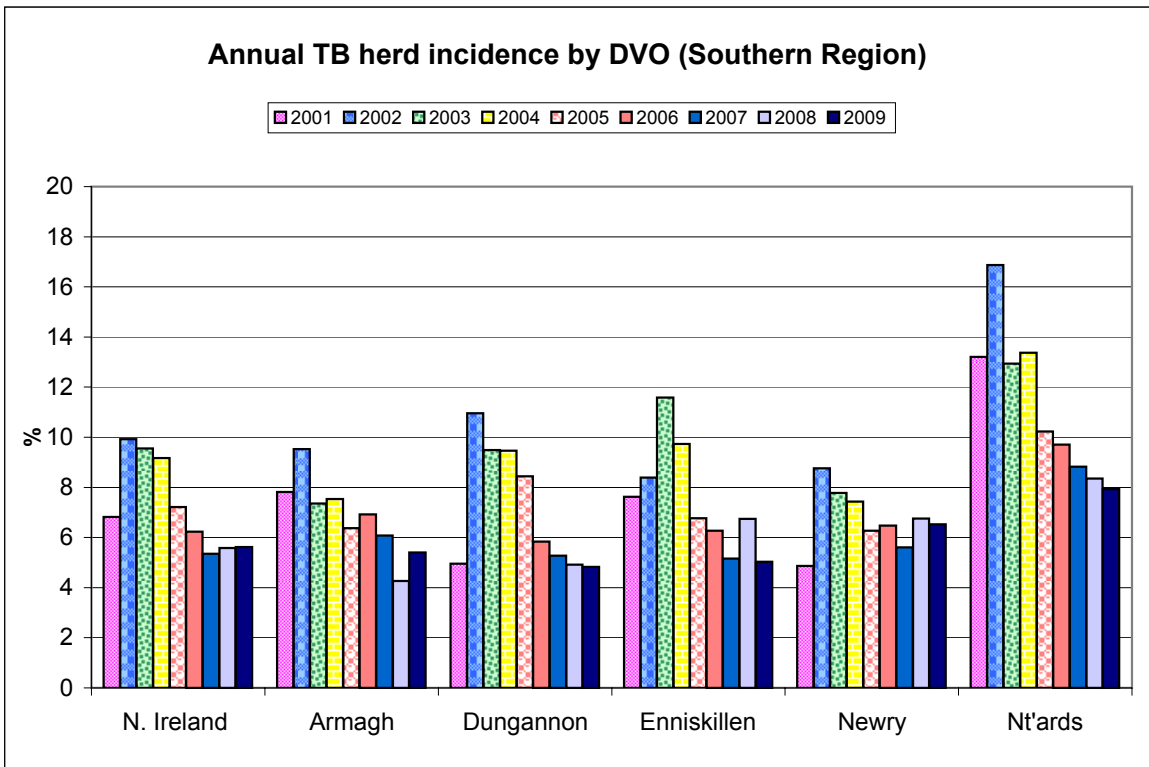


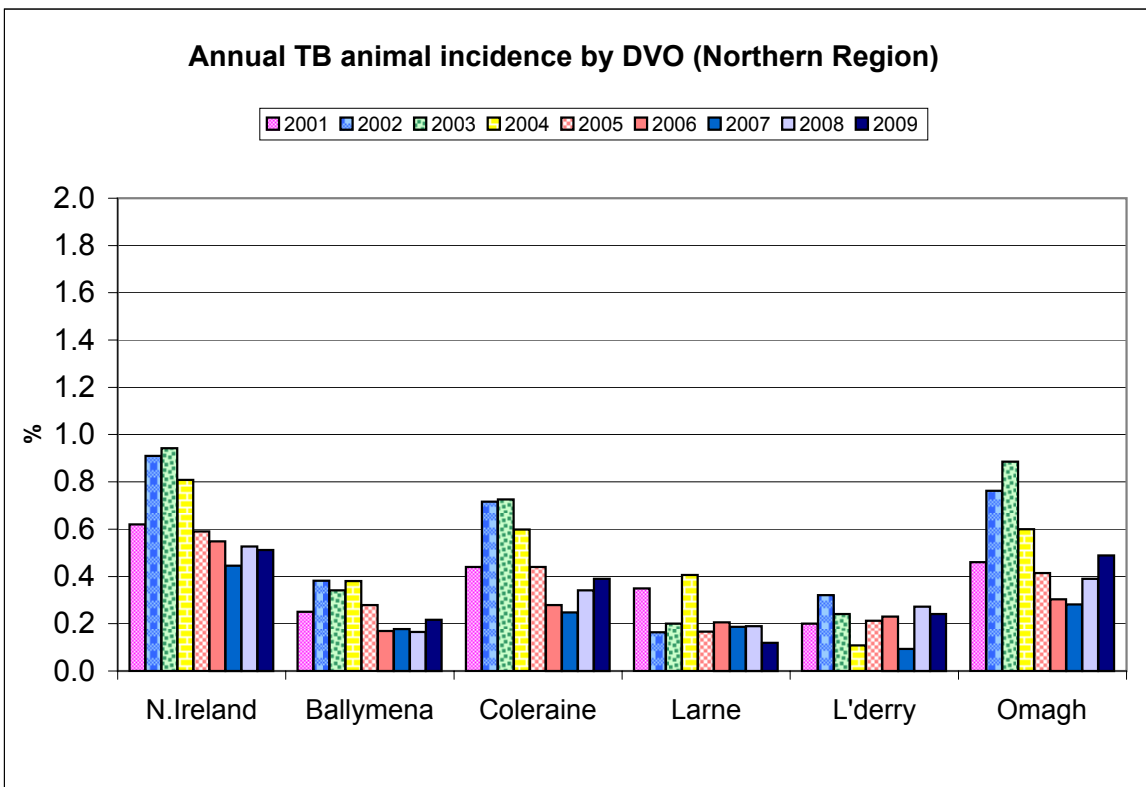
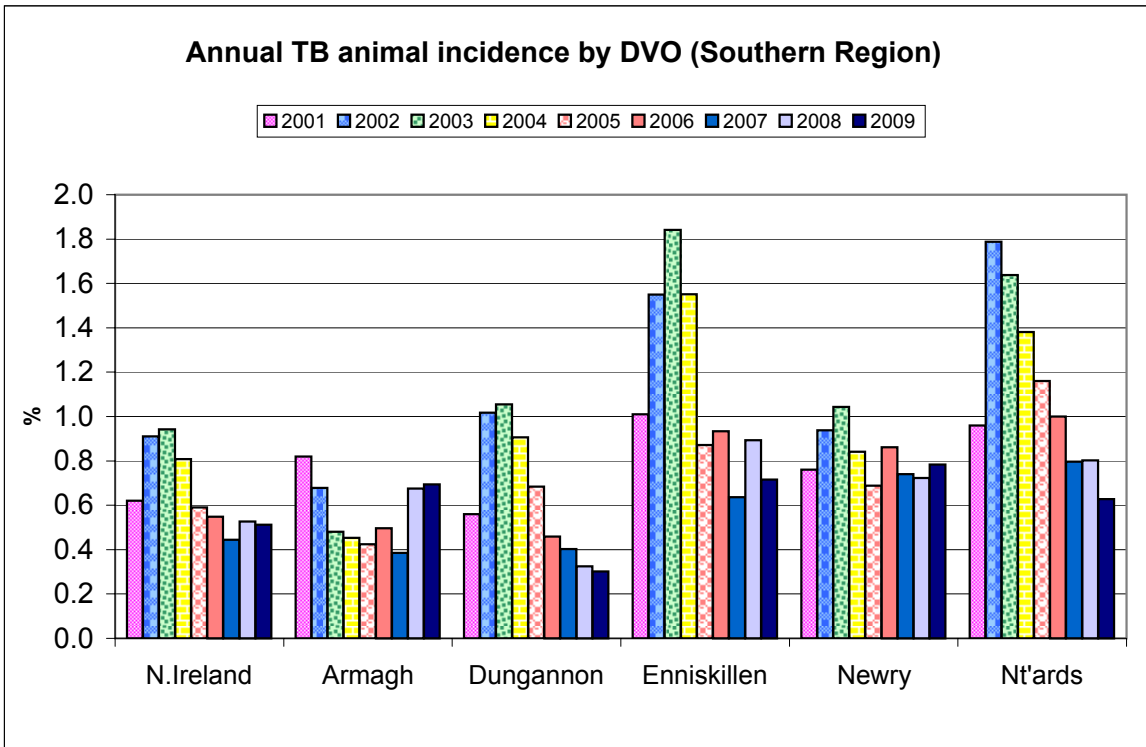
New TB Reactor Herds: January 1995 to February 2010

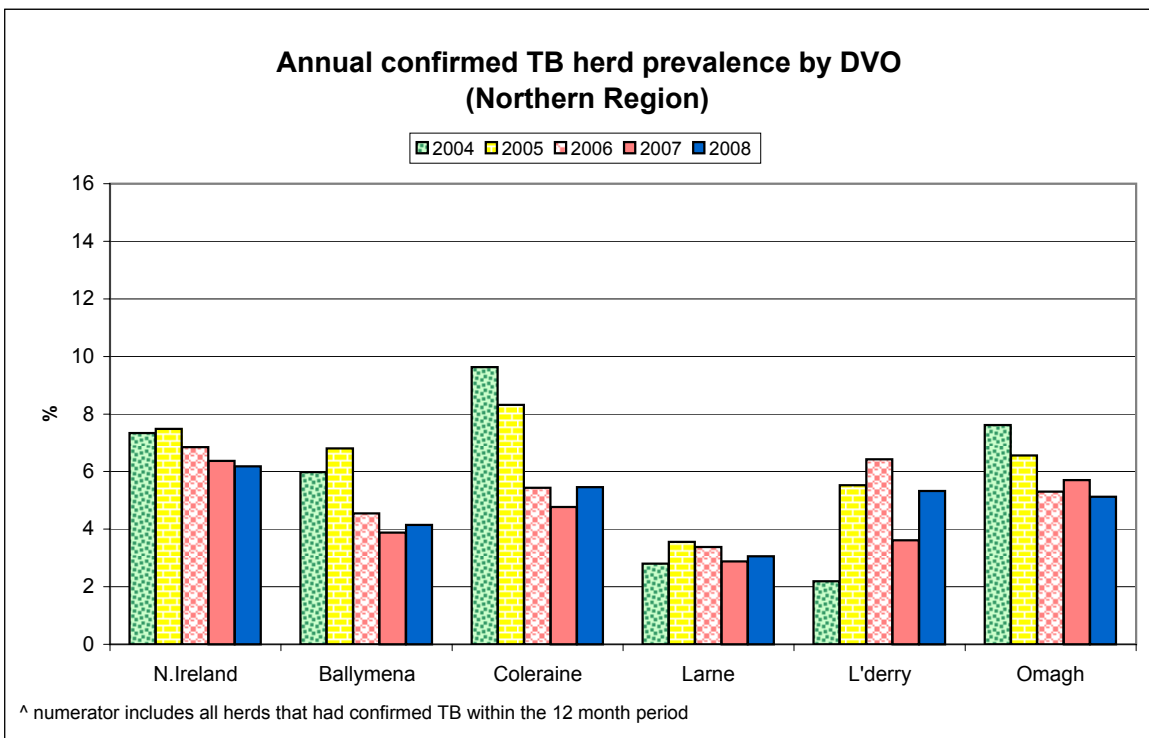
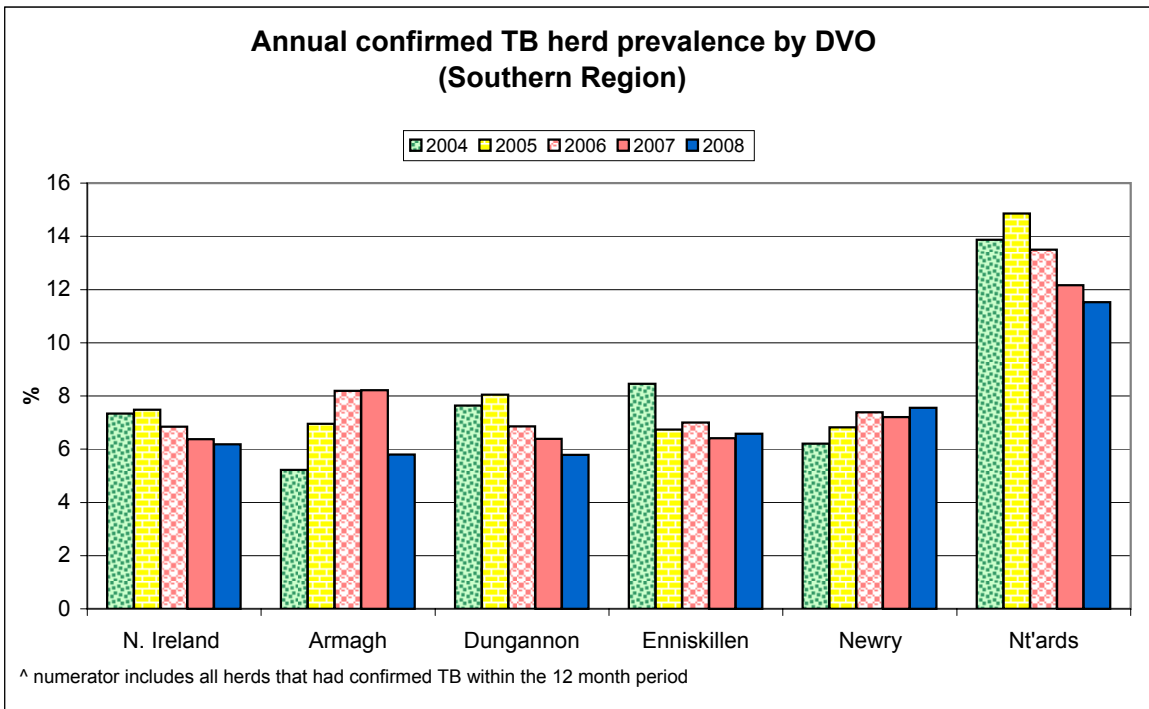


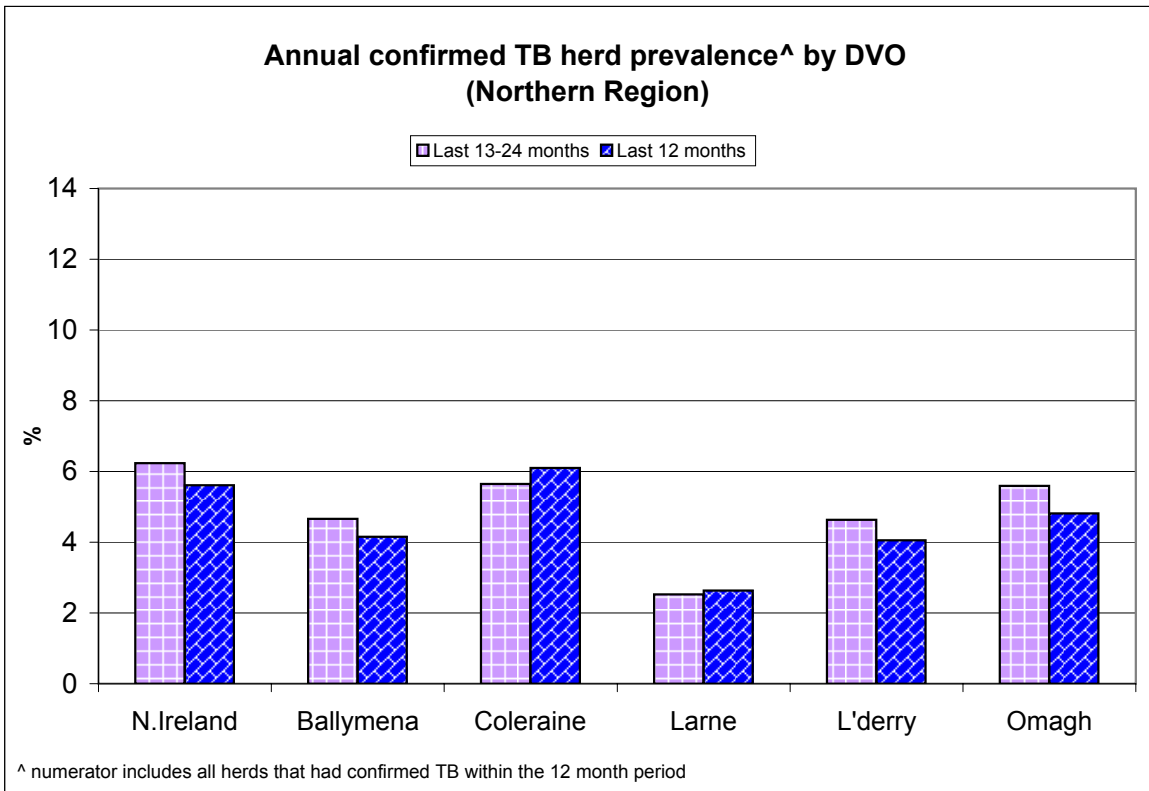
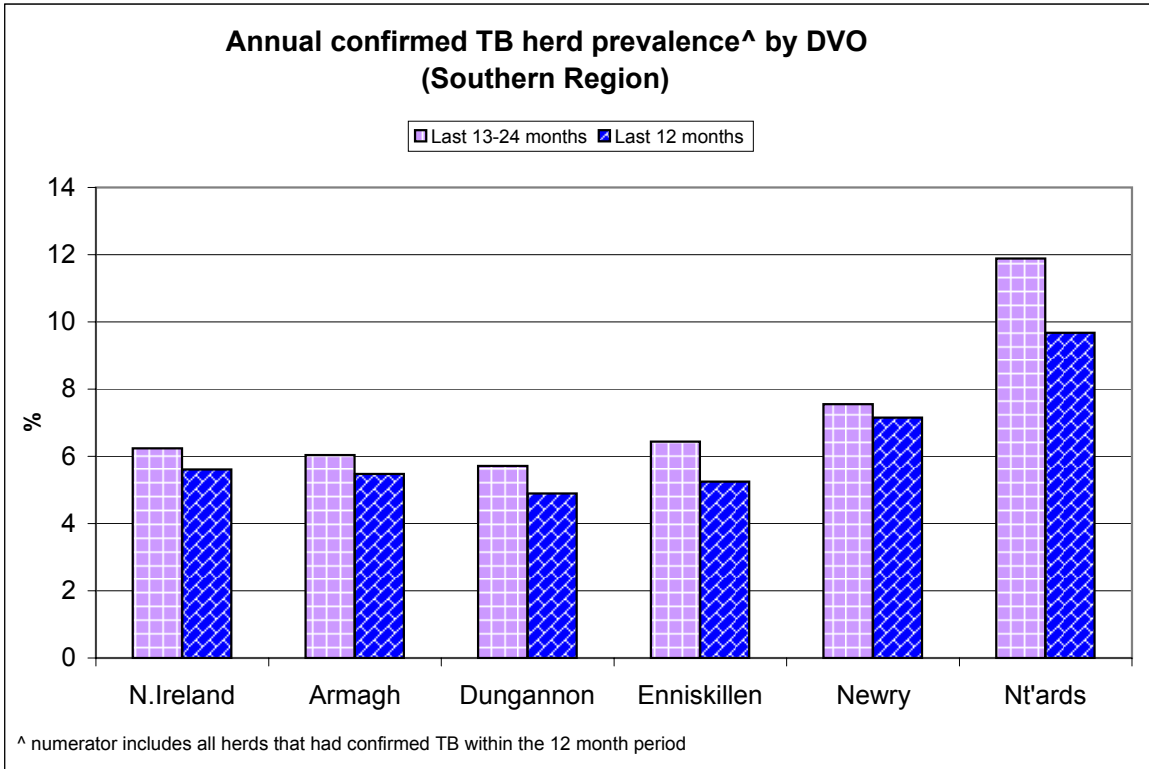
TB Reactors: January 1995 to February 2010

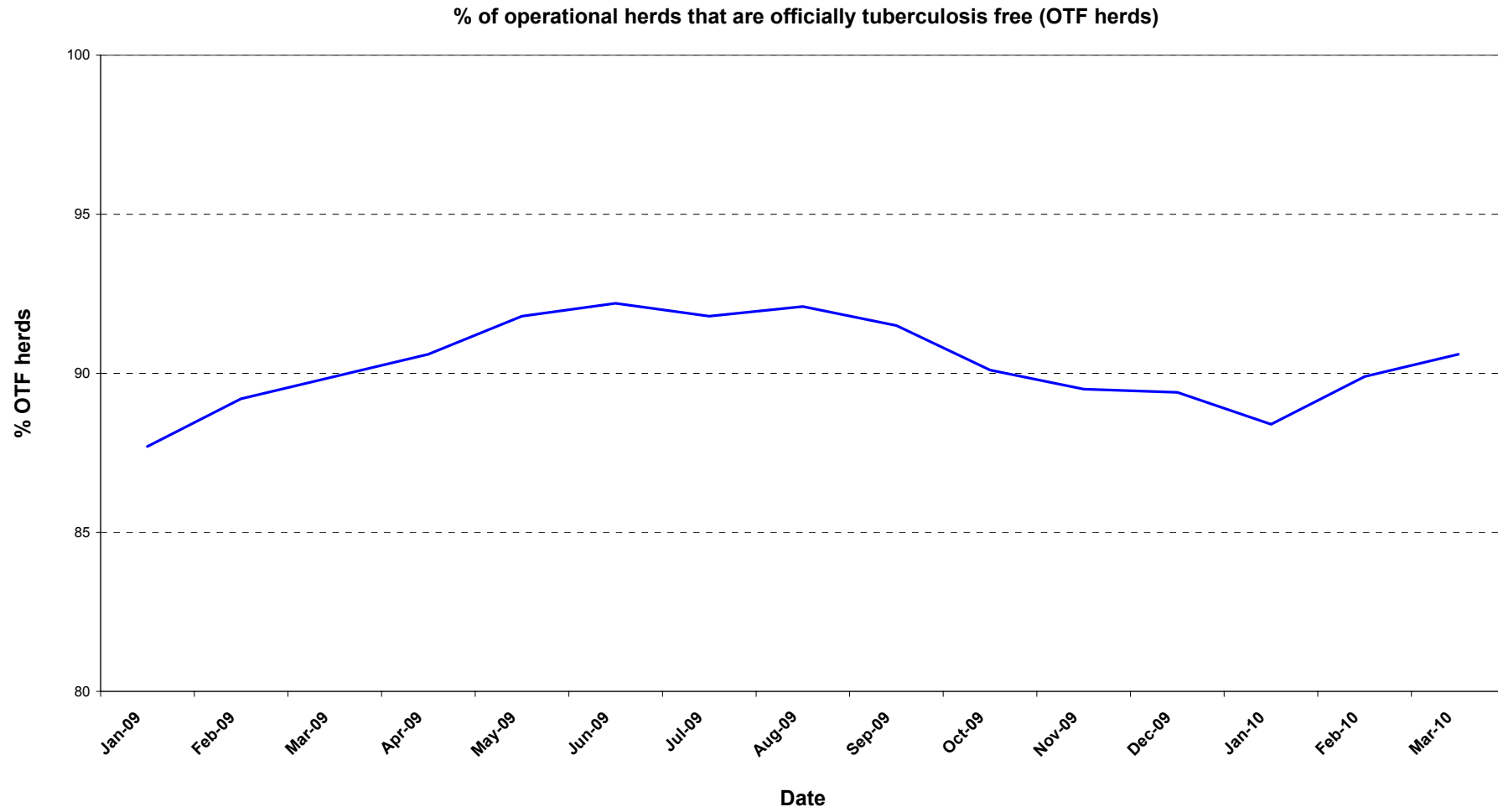












Month = February 2010

| Ref. | Total | Armagh | Ballymena | Coleraine | Dungannon | Enniskillen | Larne | L'derry | Newry | Nt'ards | Omagh | |
|------|---|--------------|-----------|-----------|-----------|-------------|-----------|-----------|----------|------------|-----------|-----------|
| d1 | No. of herds with TB reactors during month | 205 | 19 | 12 | 33 | 17 | 20 | 13 | 8 | 37 | 19 | 27 |
| d2 | No. of new reactor herds during month | 115 | 9 | 7 | 20 | 7 | 10 | 11 | 4 | 18 | 12 | 17 |
| d3 | No. of new reactor herds since start of year | 242 | 16 | 16 | 39 | 21 | 26 | 24 | 9 | 38 | 22 | 31 |
| d4 | No. of new reactor herds in the previous 12 months | 1267 | 116 | 61 | 170 | 130 | 153 | 56 | 46 | 227 | 147 | 161 |
| d26 | No. of new reactor herds in the previous 13-24 months | 1277 | 95 | 66 | 145 | 131 | 192 | 61 | 51 | 244 | 148 | 144 |
| d5 | No. of TB reactor animals during month | 691 | 62 | 20 | 73 | 49 | 46 | 86 | 9 | 174 | 92 | 80 |
| d6 | No. of TB reactor animals since start of year | 1311 | 81 | 49 | 186 | 103 | 113 | 105 | 31 | 328 | 139 | 176 |
| d7 | No. of reactor animals in the previous 12 months | 7938 | 1041 | 237 | 810 | 568 | 1062 | 227 | 156 | 1801 | 1002 | 1034 |
| d27 | No. of reactor animals in the previous 13-24 months | 8374 | 1180 | 197 | 739 | 585 | 1476 | 244 | 162 | 1700 | 1373 | 718 |
| d8 | Herd Prevalence (%) | 6.01 | 6.67 | 6.03 | 9.35 | 4.68 | 4.45 | 4.74 | 5.84 | 6.28 | 6.62 | 5.68 |
| d20 | Cumulative herd incidence in year (%) | 3.47 | 0.73 | 1.17 | 1.55 | 0.75 | 0.85 | 1.45 | 1.05 | 1.05 | 1.24 | 1.02 |
| d9 | Annual herd incidence over the last 12 months (%) | 5.54 | 5.31 | 4.45 | 6.74 | 4.66 | 5.00 | 3.39 | 5.37 | 6.27 | 8.25 | 5.30 |
| d28 | Annual herd incidence over the last 13-24 months (%) | 5.50 | 4.24 | 4.66 | 5.64 | 4.60 | 6.24 | 3.59 | 5.83 | 6.72 | 8.10 | 4.72 |
| d30 | 2009 Herd Incidence (%) | 5.61 | 5.40 | 4.59 | 6.92 | 4.83 | 5.04 | 2.90 | 5.39 | 6.52 | 7.93 | 5.53 |
| d16 | 2008 Herd Incidence (%) | 5.57 | 4.27 | 4.14 | 5.14 | 4.92 | 6.74 | 3.72 | 5.68 | 6.75 | 8.35 | 4.93 |
| d10 | 2007 Herd Incidence (%) | 5.35 | 6.08 | 4.99 | 5.07 | 5.28 | 5.16 | 2.70 | 3.85 | 5.61 | 8.83 | 4.90 |
| d11 | 2006 Herd Incidence (%) | 6.23 | 6.92 | 5.48 | 6.36 | 5.84 | 6.27 | 4.36 | 6.43 | 6.48 | 9.70 | 4.81 |
| d38 | 2005 Herd Incidence (%) | 7.22 | 6.38 | 6.87 | 9.13 | 8.45 | 6.77 | 4.69 | 5.86 | 6.28 | 10.22 | 6.68 |
| d21 | Cumulative animal incidence in year (%) | 0.251 | 0.172 | 0.130 | 0.276 | 0.187 | 0.243 | 0.203 | 0.149 | 0.427 | 0.240 | 0.282 |
| d12 | Annual animal incidence over the last 12 months (%) | 0.496 | 0.617 | 0.213 | 0.382 | 0.288 | 0.661 | 0.167 | 0.255 | 0.789 | 0.596 | 0.506 |
| d29 | Annual animal incidence over the last 13-24 months (%) | 0.517 | 0.690 | 0.177 | 0.351 | 0.296 | 0.880 | 0.179 | 0.257 | 0.744 | 0.793 | 0.345 |
| d31 | 2009 Animal Incidence (%) | 0.512 | 0.694 | 0.217 | 0.390 | 0.301 | 0.716 | 0.120 | 0.241 | 0.784 | 0.628 | 0.488 |
| d15 | 2008 Animal Incidence (%) | 0.527 | 0.675 | 0.165 | 0.342 | 0.325 | 0.894 | 0.190 | 0.272 | 0.723 | 0.802 | 0.390 |

| | | | | | | | | | | | | |
|-----|---|--------------|-------|-------|-------|-------|-------|-------|-------|-------|-------|-------|
| d13 | 2007 Animal Incidence (%) | 0.445 | 0.385 | 0.177 | 0.248 | 0.403 | 0.637 | 0.186 | 0.093 | 0.740 | 0.797 | 0.282 |
| d14 | 2006 Animal Incidence (%) | 0.548 | 0.496 | 0.170 | 0.279 | 0.459 | 0.934 | 0.205 | 0.230 | 0.862 | 1.000 | 0.304 |
| d39 | 2005 Animal Incidence (%) | 0.590 | 0.424 | 0.279 | 0.440 | 0.684 | 0.871 | 0.167 | 0.213 | 0.688 | 1.160 | 0.415 |
| d34 | APT during current month | 2.68 | 2.74 | 1.14 | 2.28 | 1.88 | 2.13 | 3.72 | 0.78 | 4.26 | 3.17 | 2.40 |
| d22 | APT since start of year | 2.49 | 1.70 | 1.30 | 2.75 | 1.85 | 2.42 | 2.02 | 1.49 | 4.25 | 2.38 | 2.79 |
| d17 | Current 12 month moving average APT | 3.34 | 4.04 | 1.66 | 2.76 | 2.17 | 4.33 | 1.42 | 1.99 | 4.53 | 3.78 | 3.72 |
| d32 | 2009 APT | 3.41 | 4.49 | 1.68 | 2.82 | 2.25 | 4.63 | 1.01 | 1.89 | 4.46 | 4.05 | 3.55 |
| d18 | 2008 APT | 3.54 | 4.51 | 1.34 | 2.65 | 2.38 | 5.69 | 1.60 | 2.09 | 4.36 | 4.80 | 2.78 |
| d19 | 2007 APT | 3.08 | 2.49 | 1.44 | 1.94 | 2.88 | 4.24 | 1.56 | 0.77 | 4.69 | 4.95 | 2.20 |
| d42 | 2006 APT | 3.49 | 3.00 | 1.30 | 2.03 | 3.06 | 5.52 | 1.60 | 1.66 | 5.23 | 5.66 | 2.16 |
| d40 | 2005 APT | 3.65 | 2.58 | 2.01 | 2.86 | 4.28 | 5.44 | 1.25 | 1.67 | 4.08 | 6.28 | 2.73 |
| d23 | No. negative in contacts since start of year | 175 | 21 | 0 | 7 | 2 | 4 | 90 | 0 | 14 | 0 | 37 |
| d46 | No. negative in contacts over last 12 months | 782 | 114 | 1 | 7 | 153 | 70 | 99 | 3 | 133 | 44 | 158 |
| d33 | No. negative in contacts during 2009 | 707 | 96 | 1 | 1 | 152 | 75 | 9 | 3 | 134 | 111 | 125 |
| d24 | No. negative in contacts during 2008 | 611 | 117 | 0 | 35 | 6 | 49 | 12 | 5 | 94 | 200 | 93 |
| d25 | No. negative in contacts during 2007 | 589 | 38 | 3 | 15 | 49 | 59 | 14 | 1 | 40 | 248 | 122 |
| d43 | No. negative in contacts during 2006 | 689 | 4 | 1 | 58 | 122 | 106 | 2 | 14 | 83 | 240 | 59 |
| d41 | No. negative in contacts during 2005 | 1208 | 25 | 8 | 93 | 48 | 377 | 5 | 7 | 12 | 584 | 49 |
| d36 | Reactor removal time 2009 | 11.6 | 13.7 | 8.2 | 8.9 | 9.6 | 11.0 | 8.9 | 8.2 | 12.3 | 12.3 | 8.9 |
| d37 | Reactor removal time 2008 | 11.6 | 12.3 | 8.9 | 8.9 | 9.6 | 9.6 | 9.6 | 8.2 | 12.3 | 12.3 | 8.2 |
| d45 | Reactor removal time 2007 | 12.3 | 12.3 | 12.3 | 11.0 | 12.3 | 8.9 | 13.0 | 8.9 | 13.0 | 13.0 | 8.9 |
| d35 | Reactor removal time 2006 | 13.0 | 12.3 | 9.6 | 11.6 | 13.7 | 11.6 | 13.0 | 10.3 | 13.7 | 13.7 | 9.6 |
| D44 | Reactor removal time 2005 | 13.0 | 10.3 | 13.0 | 13.0 | 13.0 | 13.0 | 14.4 | 13.0 | 15.8 | 12.3 | 11.6 |

Tuberculosis: number of reactor herds by month and by DVO in 2010 and unique herd breakdowns during the year

| 2010 | | DVO_CODE | | | | | | | | | | |
|-------|-------|----------|-----------|-----------|-----------|-------------|-------|---------|-------|---------|-------|-------|
| Year | Month | Armagh | Ballymena | Coleraine | Dungannon | Enniskillen | Larne | L'Derry | Newry | Nt'Ards | Omagh | Total |
| 2010 | 1 | 7 | 9 | 19 | 14 | 16 | 13 | 5 | 20 | 10 | 14 | 127 |
| 2010 | 2 | 9 | 7 | 20 | 7 | 10 | 11 | 4 | 18 | 12 | 17 | 115 |
| 2010 | 3 | | | | | | | | | | | 0 |
| 2010 | 4 | | | | | | | | | | | 0 |
| 2010 | 5 | | | | | | | | | | | 0 |
| 2010 | 6 | | | | | | | | | | | 0 |
| 2010 | 7 | | | | | | | | | | | 0 |
| 2010 | 8 | | | | | | | | | | | 0 |
| 2010 | 9 | | | | | | | | | | | 0 |
| 2010 | 10 | | | | | | | | | | | 0 |
| 2010 | 11 | | | | | | | | | | | 0 |
| 2010 | 12 | | | | | | | | | | | 0 |
| Total | | 16 | 16 | 39 | 21 | 26 | 24 | 9 | 38 | 22 | 31 | 242 |

| Unique Herd Breakdowns | | DVO_CODE | | | | | | | | | | |
|------------------------|--------|-----------|-----------|-----------|-------------|-------|---------|-------|---------|-------|-------------|--|
| Year | Armagh | Ballymena | Coleraine | Dungannon | Enniskillen | Larne | L'Derry | Newry | Nt'Ards | Omagh | Total Herds | |
| 2010 | 31 | 24 | 61 | 43 | 44 | 27 | 15 | 75 | 39 | 47 | 406 | |

Tuberculosis: number of reactor herds by month and by DVO in 2009 and unique herd breakdowns during the year

| 2009 | | DVO_CODE | | | | | | | | | | |
|-------|-------|----------|-----------|-----------|-----------|-------------|-------|---------|-------|---------|-------|-------|
| Year | Month | Armagh | Ballymena | Coleraine | Dungannon | Enniskillen | Larne | L'Derry | Newry | Nt'Ards | Omagh | Total |
| 2009 | 1 | 13 | 14 | 29 | 15 | 14 | 7 | 4 | 28 | 11 | 19 | 154 |
| 2009 | 2 | 8 | 5 | 15 | 12 | 14 | 9 | 5 | 19 | 8 | 19 | 114 |
| 2009 | 3 | 15 | 4 | 18 | 20 | 9 | 4 | 2 | 17 | 16 | 14 | 119 |
| 2009 | 4 | 12 | 6 | 16 | 12 | 19 | 3 | 5 | 22 | 7 | 18 | 120 |
| 2009 | 5 | 13 | 2 | 14 | 6 | 8 | 1 | 2 | 8 | 15 | 5 | 74 |
| 2009 | 6 | 9 | 4 | 9 | 8 | 2 | 2 | 0 | 21 | 8 | 7 | 70 |
| 2009 | 7 | 12 | 3 | 8 | 6 | 19 | 3 | 3 | 24 | 17 | 13 | 108 |
| 2009 | 8 | 11 | 3 | 7 | 8 | 15 | 0 | 2 | 16 | 7 | 5 | 74 |
| 2009 | 9 | 7 | 2 | 10 | 15 | 7 | 1 | 2 | 15 | 14 | 5 | 78 |
| 2009 | 10 | 4 | 3 | 6 | 15 | 13 | 5 | 1 | 29 | 10 | 19 | 105 |
| 2009 | 11 | 9 | 8 | 17 | 9 | 18 | 8 | 6 | 19 | 17 | 24 | 135 |
| 2009 | 12 | 8 | 10 | 26 | 10 | 17 | 5 | 14 | 18 | 14 | 20 | 142 |
| Total | | 121 | 64 | 175 | 136 | 155 | 48 | 46 | 236 | 144 | 168 | 1293 |

| Unique Herd Breakdowns | | DVO_CODE | | | | | | | | | | |
|------------------------|--------|-----------|-----------|-----------|-------------|-------|---------|-------|---------|-------|-------------|--|
| Year | Armagh | Ballymena | Coleraine | Dungannon | Enniskillen | Larne | L'Derry | Newry | Nt'Ards | Omagh | Total Herds | |
| 2009 | 158 | 75 | 213 | 163 | 209 | 56 | 51 | 306 | 190 | 187 | 1608 | |

Tuberculosis: number of reactor herds by month and by DVO in 2008 and unique herd breakdowns during the year

| 2008 | | DVO_CODE | | | | | | | | | | |
|-------|-------|----------|-----------|-----------|-----------|-------------|-------|---------|-------|---------|-------|-------|
| Year | Month | Armagh | Ballymena | Coleraine | Dungannon | Enniskillen | Larne | L'Derry | Newry | Nt'Ards | Omagh | Total |
| 2008 | 1 | 10 | 6 | 14 | 16 | 19 | 9 | 4 | 17 | 6 | 22 | 123 |
| 2008 | 2 | 11 | 4 | 15 | 16 | 19 | 7 | 3 | 28 | 15 | 23 | 141 |
| 2008 | 3 | 6 | 11 | 5 | 6 | 15 | 4 | 5 | 15 | 14 | 15 | 96 |
| 2008 | 4 | 7 | 7 | 12 | 12 | 20 | 4 | 2 | 26 | 14 | 17 | 121 |
| 2008 | 5 | 13 | 6 | 10 | 10 | 11 | 3 | 7 | 23 | 10 | 13 | 106 |
| 2008 | 6 | 4 | 2 | 6 | 2 | 13 | 1 | 6 | 19 | 11 | 8 | 72 |
| 2008 | 7 | 7 | 1 | 4 | 13 | 7 | 2 | 2 | 17 | 13 | 9 | 75 |
| 2008 | 8 | 4 | 1 | 7 | 8 | 13 | 4 | 2 | 25 | 17 | 8 | 89 |
| 2008 | 9 | 6 | 2 | 9 | 14 | 19 | 4 | 1 | 18 | 15 | 3 | 91 |
| 2008 | 10 | 7 | 4 | 12 | 10 | 26 | 3 | 4 | 22 | 11 | 9 | 108 |
| 2008 | 11 | 14 | 7 | 21 | 15 | 20 | 9 | 9 | 18 | 11 | 12 | 136 |
| 2008 | 12 | 6 | 6 | 15 | 14 | 20 | 11 | 4 | 14 | 13 | 12 | 115 |
| Total | | 95 | 57 | 130 | 136 | 202 | 61 | 49 | 242 | 150 | 151 | 1273 |

| Unique Herd Breakdowns | | DVO_CODE | | | | | | | | | | |
|------------------------|--------|-----------|-----------|-----------|-------------|-------|---------|-------|---------|-------|-------------|--|
| Year | Armagh | Ballymena | Coleraine | Dungannon | Enniskillen | Larne | L'Derry | Newry | Nt'Ards | Omagh | Total Herds | |
| 2008 | 128 | 66 | 158 | 167 | 248 | 67 | 56 | 315 | 215 | 178 | 1598 | |

A herd is defined as being a TB reactor herd if it had at least one TB reactor animal in that month and no TB reactor animals during the previous 12 months.

A TB unique herd breakdown is defined as a herd which has had at least one TB reactor during the specified calendar year irrespective of any TB reactors during the previous calendar year.

Tuberculosis: number of reactor animals by month and by DVO 2010

| 2010 | | DVO_CODE | | | | | | | | | | |
|-------|-------|----------|-----------|-----------|-----------|-------------|-------|---------|-------|---------|-------|-------|
| Year | Month | Armagh | Ballymena | Coleraine | Dungannon | Enniskillen | Larne | L'Derry | Newry | Nt'Ards | Omagh | Total |
| 2010 | 1 | 19 | 29 | 113 | 54 | 67 | 19 | 22 | 154 | 47 | 96 | 620 |
| 2010 | 2 | 62 | 20 | 73 | 49 | 46 | 86 | 9 | 174 | 92 | 80 | 691 |
| 2010 | 3 | | | | | | | | | | | 0 |
| 2010 | 4 | | | | | | | | | | | 0 |
| 2010 | 5 | | | | | | | | | | | 0 |
| 2010 | 6 | | | | | | | | | | | 0 |
| 2010 | 7 | | | | | | | | | | | 0 |
| 2010 | 8 | | | | | | | | | | | 0 |
| 2010 | 9 | | | | | | | | | | | 0 |
| 2010 | 10 | | | | | | | | | | | 0 |
| 2010 | 11 | | | | | | | | | | | 0 |
| 2010 | 12 | | | | | | | | | | | 0 |
| Total | | 81 | 49 | 186 | 103 | 113 | 105 | 31 | 328 | 139 | 176 | 1311 |

Tuberculosis: number of reactor animals by month and by DVO 2009

| 2009 | | DVO_CODE | | | | | | | | | | |
|-------|-------|----------|-----------|-----------|-----------|-------------|-------|---------|-------|---------|-------|-------|
| Year | Month | Armagh | Ballymena | Coleraine | Dungannon | Enniskillen | Larne | L'Derry | Newry | Nt'Ards | Omagh | Total |
| 2009 | 1 | 125 | 47 | 98 | 80 | 124 | 9 | 15 | 194 | 96 | 58 | 846 |
| 2009 | 2 | 99 | 6 | 105 | 46 | 103 | 30 | 7 | 130 | 118 | 81 | 725 |
| 2009 | 3 | 133 | 38 | 67 | 74 | 66 | 12 | 5 | 120 | 105 | 59 | 679 |
| 2009 | 4 | 63 | 12 | 81 | 66 | 170 | 9 | 13 | 155 | 97 | 106 | 772 |
| 2009 | 5 | 169 | 10 | 38 | 30 | 53 | 2 | 2 | 106 | 59 | 147 | 616 |
| 2009 | 6 | 67 | 21 | 29 | 23 | 53 | 2 | 0 | 140 | 50 | 43 | 428 |
| 2009 | 7 | 130 | 12 | 41 | 27 | 129 | 12 | 49 | 161 | 90 | 40 | 691 |
| 2009 | 8 | 96 | 15 | 22 | 44 | 124 | 0 | 11 | 189 | 36 | 78 | 615 |
| 2009 | 9 | 145 | 7 | 75 | 62 | 80 | 2 | 3 | 177 | 97 | 21 | 669 |
| 2009 | 10 | 32 | 18 | 96 | 43 | 100 | 25 | 6 | 183 | 106 | 95 | 704 |
| 2009 | 11 | 57 | 20 | 78 | 43 | 91 | 50 | 10 | 107 | 156 | 134 | 746 |
| 2009 | 12 | 68 | 35 | 97 | 53 | 83 | 8 | 26 | 135 | 67 | 135 | 707 |
| Total | | 1184 | 241 | 827 | 591 | 1176 | 161 | 147 | 1797 | 1077 | 997 | 8198 |

Tuberculosis: number of reactor animals by month and by DVO 2008

| 2008 | | DVO_CODE | | | | | | | | | | |
|-------|-------|----------|-----------|-----------|-----------|-------------|-------|---------|-------|---------|-------|-------|
| Year | Month | Armagh | Ballymena | Coleraine | Dungannon | Enniskillen | Larne | L'Derry | Newry | Nt'Ards | Omagh | Total |
| 2008 | 1 | 77 | 26 | 65 | 86 | 124 | 15 | 19 | 80 | 104 | 96 | 692 |
| 2008 | 2 | 107 | 6 | 96 | 86 | 126 | 31 | 13 | 173 | 126 | 131 | 895 |
| 2008 | 3 | 42 | 38 | 62 | 42 | 60 | 9 | 8 | 99 | 173 | 84 | 617 |
| 2008 | 4 | 38 | 12 | 58 | 49 | 111 | 30 | 14 | 180 | 57 | 83 | 632 |
| 2008 | 5 | 49 | 25 | 38 | 32 | 79 | 27 | 10 | 98 | 192 | 70 | 620 |
| 2008 | 6 | 24 | 3 | 85 | 43 | 73 | 2 | 6 | 157 | 54 | 105 | 552 |
| 2008 | 7 | 79 | 3 | 12 | 48 | 119 | 10 | 12 | 114 | 135 | 57 | 589 |
| 2008 | 8 | 37 | 5 | 49 | 48 | 115 | 32 | 12 | 186 | 131 | 32 | 647 |
| 2008 | 9 | 87 | 4 | 22 | 61 | 140 | 10 | 3 | 71 | 144 | 9 | 551 |
| 2008 | 10 | 29 | 9 | 29 | 26 | 181 | 25 | 32 | 222 | 95 | 16 | 664 |
| 2008 | 11 | 304 | 31 | 99 | 44 | 221 | 34 | 36 | 144 | 116 | 39 | 1068 |
| 2008 | 12 | 267 | 14 | 82 | 66 | 150 | 26 | 7 | 105 | 62 | 84 | 863 |
| Total | | 1140 | 176 | 697 | 631 | 1499 | 251 | 172 | 1629 | 1389 | 806 | 8390 |

A TB reactor animal is defined as an animal where the manual interpretation field for a skin test is positive ('P') with the first test date being taken as the time at which the animal became a reactor.

Animals with lesions at routine slaughter ('LRS') are not taken into account.

Month = February 2010

| Ref. | Total | Armagh | Ballymena | Coleraine | Dungannon | Enniskillen | Larne | L'derry | Newry | Nt'ards | Omagh |
|--|--------------|---------------|------------------|------------------|------------------|--------------------|--------------|----------------|--------------|----------------|--------------|
| b16 No. herds with any test completed in month | 3850 | 325 | 240 | 407 | 421 | 496 | 327 | 150 | 628 | 314 | 542 |
| b17 No. herds with any test, from start of year | 7928 | 708 | 512 | 877 | 890 | 974 | 703 | 327 | 1258 | 622 | 1057 |
| b29 All herds with any test, from start of year | 8217 | 747 | 530 | 904 | 919 | 994 | 730 | 341 | 1306 | 659 | 1087 |
| b18 No. herds with any test, from start of year (no cattle) | 289 | 39 | 18 | 27 | 29 | 20 | 27 | 14 | 48 | 37 | 30 |
| b19 No. herds with herd test completed in month | 3411 | 285 | 199 | 353 | 363 | 449 | 274 | 137 | 589 | 287 | 475 |
| b20 No. herds with herd test, from start of year | 6975 | 606 | 440 | 728 | 761 | 885 | 601 | 285 | 1182 | 564 | 923 |
| b30 All herds with herd test, from start of year | 7262 | 645 | 458 | 755 | 790 | 902 | 628 | 300 | 1230 | 601 | 953 |
| b21 No. herds with herd test, from start of year (no cattle) | 287 | 39 | 18 | 27 | 29 | 17 | 27 | 15 | 48 | 37 | 30 |
| b22 No. herds with herd test during last 12 months | 22881 | 2186 | 1372 | 2524 | 2788 | 3059 | 1653 | 857 | 3622 | 1781 | 3039 |
| b31 No. herds with herd test during last 13-24 months | 23236 | 2241 | 1415 | 2570 | 2848 | 3075 | 1698 | 875 | 3632 | 1828 | 3054 |
| b32 No. herds with herd test during 2009 | 23031 | 2240 | 1394 | 2529 | 2814 | 3078 | 1653 | 854 | 3617 | 1816 | 3036 |
| b28 No. herds with herd test during 2008 | 22835 | 2227 | 1376 | 2527 | 2767 | 2995 | 1638 | 863 | 3585 | 1797 | 3060 |
| b23 No. herds with herd test during 2007 | 23642 | 2253 | 1444 | 2664 | 2881 | 3119 | 1702 | 858 | 3690 | 1891 | 3140 |
| b24 No. herds with herd test during 2006 | 24301 | 2369 | 1496 | 2706 | 2944 | 3173 | 1743 | 933 | 3766 | 1948 | 3223 |
| b39 No. herds with herd test during 2005 | 24820 | 2430 | 1529 | 2826 | 3031 | 3204 | 1771 | 904 | 3840 | 2005 | 3280 |
| b25 No. herds with any risk test completed | 3319 | 365 | 169 | 330 | 303 | 425 | 193 | 97 | 757 | 286 | 394 |
| b26 No. herds with herd risk test completed | 2071 | 232 | 78 | 141 | 122 | 298 | 64 | 37 | 658 | 203 | 238 |
| b27 No. herds with restricted herd test completed | 929 | 89 | 48 | 118 | 110 | 109 | 43 | 31 | 169 | 116 | 96 |

Month = February 2010

| Ref | Total | Armagh | Ballymena | Coleraine | Dungannon | Enniskillen | Larne | L'derry | Newry | Nt'ards | Omagh | |
|-----|---|---------------|--------------|--------------|--------------|--------------|--------------|--------------|--------------|--------------|--------------|--------------|
| c1 | Total number of tests in current month | 4391 | 391 | 278 | 455 | 520 | 557 | 360 | 174 | 687 | 356 | 613 |
| c2 | Total number of tests from start of year | 9109 | 863 | 576 | 997 | 1099 | 1092 | 792 | 371 | 1395 | 717 | 1207 |
| c3 | No. tests during the same time period in the previous year | 9830 | 1005 | 629 | 1016 | 1173 | 1229 | 829 | 357 | 1588 | 801 | 1203 |
| c4 | % change between years | -7.9 | -16.5 | -9.2 | -1.9 | -6.7 | -12.5 | -4.7 | 3.8 | -13.8 | -11.7 | 0.3 |
| c5 | No. tests in the previous 12 months | 41993 | 4546 | 2245 | 4403 | 5062 | 5291 | 2686 | 1380 | 7402 | 3603 | 5375 |
| c6 | No. animal tests in current month | 257750 | 22632 | 17568 | 32008 | 26096 | 21603 | 23138 | 11548 | 40881 | 29000 | 33276 |
| c7 | No. animal tests from start of year | 526786 | 47622 | 37729 | 67709 | 55652 | 46677 | 52047 | 20850 | 77086 | 58290 | 63124 |
| c8 | No. animal tests during the same time period in the previous year | 552404 | 53632 | 38485 | 67452 | 57676 | 55270 | 51467 | 20383 | 82243 | 59574 | 66222 |
| c9 | % change between years | -4.9 | -12.6 | -2.0 | 0.4 | -3.6 | -18.4 | 1.1 | 2.2 | -6.7 | -2.2 | -4.9 |
| c10 | No. animal tests in previous 12 months | 2378795 | 257660 | 142388 | 293556 | 261156 | 245418 | 159998 | 78379 | 397521 | 264735 | 277984 |
| c11 | No. cattle eligible for TB testing | 1609386 | 154852 | 113178 | 211511 | 187703 | 161965 | 139035 | 63731 | 207855 | 165066 | 204490 |
| c12 | No. cattle herds eligible for TB testing | 26273 | 2576 | 1586 | 2923 | 3178 | 3362 | 1936 | 1033 | 4092 | 2105 | 3482 |
| c13 | No. restricted herd tests during month | 502 | 49 | 31 | 64 | 48 | 58 | 21 | 20 | 92 | 59 | 60 |
| c14 | No. animals tested | 72731 | 7355 | 4203 | 8966 | 8443 | 5481 | 3754 | 3907 | 14419 | 8313 | 7890 |
| c15 | No. herd tests during month | 3411 | 285 | 199 | 353 | 363 | 449 | 274 | 137 | 589 | 287 | 475 |
| c16 | No. animals tested | 254531 | 21629 | 17429 | 31783 | 25747 | 21259 | 22791 | 11459 | 40706 | 28785 | 32943 |
| c17 | No. individual tests during month | 980 | 106 | 79 | 102 | 157 | 108 | 86 | 37 | 98 | 69 | 138 |
| c18 | No. animals tested | 3219 | 1003 | 139 | 225 | 349 | 344 | 347 | 89 | 175 | 215 | 333 |
| c23 | No. animals TB tested since start of year | 522239 | 47073 | 37558 | 67320 | 55073 | 46417 | 51831 | 20738 | 76802 | 57890 | 62483 |
| c19 | No. animals TB tested in previous 12 months | 1598873 | 168828 | 111230 | 211785 | 197014 | 160689 | 135835 | 61080 | 228129 | 168135 | 204532 |
| c24 | No. animals TB tested in previous 13-24 months | 1620978 | 171024 | 111127 | 210478 | 197561 | 167793 | 136514 | 63001 | 228562 | 173167 | 208103 |
| c25 | No. animals TB tested in 2009 | 1601500 | 170614 | 110939 | 212118 | 196296 | 164205 | 134507 | 60943 | 229310 | 171602 | 204195 |
| c22 | No. animals TB tested in 2008 | 1591976 | 168976 | 106828 | 203947 | 194163 | 167759 | 132370 | 63159 | 225200 | 173199 | 206849 |
| c20 | No. animals TB tested in 2007 | 1640552 | 172852 | 114560 | 215201 | 199652 | 174151 | 136324 | 62184 | 225462 | 178638 | 205208 |
| c21 | No. animals TB tested in 2006 | 1711870 | 182776 | 120699 | 220008 | 210854 | 182488 | 144582 | 69516 | 234093 | 185689 | 215645 |
| c26 | No. animals TB tested in 2005 | 1776064 | 183292 | 125632 | 237269 | 222514 | 184630 | 151248 | 66659 | 234585 | 191843 | 226983 |

Month = March 2010

| Ref | | Total | Armagh | Ballymena | Coleraine | Dungannon | Enniskillen | Larne | L'derry | Newry | Nt'ards | Omagh |
|-----|--|--------------|---------------|------------------|------------------|------------------|--------------------|--------------|----------------|--------------|----------------|--------------|
| f1 | No. of Officially Tuberculosis Free Herds (OTF) | 23953 | 2318 | 1516 | 2685 | 2952 | 3165 | 1800 | 947 | 3494 | 1854 | 3222 |
| f2 | No. of Officially Tuberculosis Suspended Herds (OTS) | 1321 | 203 | 67 | 118 | 117 | 92 | 138 | 44 | 231 | 121 | 190 |
| f3 | No. of Officially Tuberculosis Withdrawn Herds (OTW) | 1159 | 115 | 61 | 147 | 137 | 106 | 44 | 41 | 239 | 145 | 124 |
| f4 | % herds that are OTF | 90.6 | 87.9 | 92.2 | 91.0 | 92.1 | 94.1 | 90.8 | 91.8 | 88.1 | 87.5 | 91.1 |
| f5 | % herds that are OTS | 5.0 | 7.7 | 4.1 | 4.0 | 3.6 | 2.7 | 7.0 | 4.3 | 5.8 | 5.7 | 5.4 |
| f6 | % herds that are OTW | 4.4 | 4.4 | 3.7 | 5.0 | 4.3 | 3.2 | 2.2 | 4.0 | 6.0 | 6.8 | 3.5 |

| | | Month = October 2009 | | | | | | | | | | |
|------------|---|----------------------------------|---------------|------------------|------------------|------------------|--------------------|--------------|----------------|--------------|----------------|--------------|
| | | (Data lagged by 4 months) | | | | | | | | | | |
| Ref | | Total | Armagh | Ballymena | Coleraine | Dungannon | Enniskillen | Larne | L'derry | Newry | Nt'ards | Omagh |
| e1 | No. TB animals found at routine slaughter in current year | 470 | 55 | 30 | 46 | 53 | 19 | 13 | 11 | 125 | 66 | 52 |
| e19 | No. TB animals found at routine slaughter in last 12 months | 597 | 69 | 35 | 53 | 73 | 25 | 17 | 12 | 162 | 85 | 66 |
| e20 | No. TB animals found at routine slaughter in last 13-24 months | 667 | 73 | 32 | 52 | 96 | 56 | 22 | 5 | 157 | 109 | 65 |
| e6 | No. TB animals found at routine slaughter in 2008 | 638 | 73 | 32 | 51 | 92 | 47 | 19 | 6 | 153 | 106 | 59 |
| e2 | No. TB animals found at routine slaughter in 2007 | 695 | 103 | 31 | 32 | 95 | 60 | 21 | 13 | 169 | 107 | 64 |
| e3 | No. TB animals found at routine slaughter in 2006 | 640 | 81 | 22 | 41 | 86 | 54 | 34 | 16 | 144 | 111 | 51 |
| e4 | No. TB animals found at routine slaughter in 2005 | 656 | 82 | 23 | 46 | 89 | 56 | 22 | 18 | 123 | 146 | 51 |
| e5 | No. TB animals found at routine slaughter in 2004 | 774 | 78 | 38 | 87 | 98 | 53 | 46 | 9 | 152 | 136 | 77 |
| e7 | No. herds with TB found at routine slaughter in current year | 325 | 39 | 16 | 37 | 36 | 15 | 13 | 9 | 74 | 45 | 41 |
| e21 | No. herds with TB found at routine slaughter in last 12 months | 408 | 48 | 19 | 43 | 51 | 21 | 16 | 10 | 93 | 58 | 49 |
| e22 | No. herds with TB found at routine slaughter in last 13-24 months | 481 | 60 | 17 | 40 | 68 | 44 | 19 | 5 | 95 | 80 | 53 |
| e12 | No. herds with TB found at routine slaughter in 2008 | 450 | 60 | 16 | 37 | 68 | 36 | 18 | 6 | 90 | 72 | 47 |
| e8 | No. herds with TB found at routine slaughter in 2007 | 513 | 71 | 14 | 25 | 67 | 55 | 20 | 10 | 116 | 85 | 50 |
| e9 | No. herds with TB found at routine slaughter in 2006 | 461 | 63 | 19 | 33 | 65 | 43 | 28 | 16 | 80 | 77 | 37 |
| e10 | No. herds with TB found at routine slaughter in 2005 | 542 | 67 | 21 | 42 | 69 | 47 | 22 | 17 | 103 | 109 | 45 |
| e11 | No. herds with TB found at routine slaughter in 2004 | 630 | 66 | 32 | 72 | 87 | 43 | 36 | 9 | 129 | 99 | 57 |
| e13 | % of TB animals that were LRS in current year | 6.5 | 4.9 | 13.9 | 6.6 | 9.7 | 1.9 | 11.2 | 9.0 | 7.4 | 7.2 | 6.7 |
| e23 | % of TB animals that were LRS in last 12 months | 6.4 | 4.1 | 13.2 | 6.0 | 10.8 | 1.8 | 9.4 | 7.2 | 8.2 | 7.6 | 7.2 |
| e24 | % of TB animals that were LRS in last 13-24 months | 7.7 | 10.0 | 14.5 | 7.2 | 12.5 | 4.0 | 8.3 | 3.1 | 8.8 | 6.3 | 7.0 |
| e18 | % of TB animals that were LRS in 2008 | 7.1 | 6.0 | 15.4 | 6.8 | 12.7 | 3.0 | 7.0 | 3.4 | 8.6 | 7.1 | 6.8 |
| e14 | % of TB animals that were LRS in 2007 | 8.7 | 13.4 | 13.2 | 5.7 | 10.6 | 5.1 | 7.6 | 18.3 | 9.2 | 7.0 | 10.0 |
| e15 | % of TB animals that were LRS in 2006 | 6.4 | 8.2 | 9.7 | 6.3 | 8.2 | 3.1 | 10.3 | 9.1 | 6.7 | 5.6 | 7.2 |
| e16 | % of TB animals that were LRS in 2005 | 5.9 | 9.5 | 6.1 | 4.2 | 5.5 | 3.4 | 8.0 | 11.3 | 7.1 | 6.2 | 5.1 |
| e17 | % of TB animals that were LRS in 2004 | 4.9 | 8.5 | 6.9 | 5.5 | 4.3 | 1.7 | 6.5 | 9.9 | 7.1 | 4.7 | 5.1 |

| Month = October 2009 | | | | | | | | | | | | |
|-----------------------------|---|--------------|---------------|------------------|------------------|------------------|--------------------|--------------|----------------|--------------|----------------|--------------|
| Ref | (Data lagged by 4 months) | Total | Armagh | Ballymena | Coleraine | Dungannon | Enniskillen | Larne | L'derry | Newry | Nt'ards | Omagh |
| g1 | No. of confirmed TB reactors during current year | 2526 | 303 | 80 | 289 | 221 | 384 | 22 | 62 | 486 | 360 | 319 |
| g31 | No. of confirmed TB reactors during last 12 months | 3147 | 446 | 93 | 377 | 259 | 503 | 43 | 94 | 539 | 410 | 383 |
| g32 | No. of confirmed TB reactors during last 13-24 months | 3318 | 270 | 94 | 309 | 261 | 515 | 76 | 86 | 543 | 712 | 452 |
| g6 | No. of confirmed TB reactors 2008 | 3298 | 425 | 76 | 329 | 231 | 536 | 75 | 102 | 514 | 590 | 420 |
| g2 | No. of confirmed TB reactors 2007 | 3204 | 306 | 102 | 273 | 370 | 523 | 92 | 37 | 537 | 640 | 324 |
| g3 | No. of confirmed TB reactors 2006 | 3973 | 407 | 84 | 296 | 370 | 721 | 73 | 87 | 787 | 829 | 319 |
| g4 | No. of confirmed TB reactors 2005 | 3990 | 292 | 155 | 352 | 450 | 533 | 50 | 65 | 702 | 996 | 395 |
| g5 | No. of confirmed TB reactors 2004 | 4950 | 336 | 231 | 606 | 574 | 677 | 150 | 26 | 669 | 1133 | 548 |
| g7 | Total animals with confirmed TB during current year | 2996 | 358 | 110 | 335 | 274 | 403 | 35 | 73 | 611 | 426 | 371 |
| g33 | Total animals with confirmed TB during last 12 months | 3744 | 515 | 128 | 430 | 332 | 528 | 60 | 106 | 701 | 495 | 449 |
| g34 | Total animals with confirmed TB in last 13-24 months | 3985 | 343 | 126 | 361 | 357 | 571 | 98 | 91 | 700 | 821 | 517 |
| g12 | Total animals with confirmed TB in 2008 | 3936 | 498 | 108 | 380 | 323 | 583 | 94 | 108 | 667 | 696 | 479 |
| g8 | Total animals with confirmed TB in 2007 | 3899 | 409 | 133 | 305 | 465 | 583 | 113 | 50 | 706 | 747 | 388 |
| g9 | Total animals with confirmed TB in 2006 | 4613 | 488 | 106 | 337 | 456 | 775 | 107 | 103 | 931 | 940 | 370 |
| g10 | Total animals with confirmed TB in 2005 | 4646 | 374 | 178 | 398 | 539 | 589 | 72 | 83 | 825 | 1142 | 446 |
| g11 | Total animals with confirmed TB in 2004 | 5724 | 414 | 269 | 693 | 672 | 730 | 196 | 35 | 821 | 1269 | 625 |
| g13 | Confirmed TB animal prevalence in current year (%) | 0.228 | 0.247 | 0.134 | 0.203 | 0.169 | 0.295 | 0.037 | 0.152 | 0.298 | 0.293 | 0.230 |
| g35 | Confirmed TB animal prevalence in last 12 months (%) | 0.235 | 0.306 | 0.120 | 0.206 | 0.169 | 0.324 | 0.044 | 0.174 | 0.309 | 0.291 | 0.220 |
| g36 | Confirmed TB animal prevalence in last 13-24 months (%) | 0.247 | 0.202 | 0.112 | 0.176 | 0.184 | 0.334 | 0.072 | 0.141 | 0.309 | 0.471 | 0.249 |
| g18 | Confirmed TB animal prevalence in 2008 (%) | 0.247 | 0.295 | 0.101 | 0.186 | 0.166 | 0.348 | 0.071 | 0.171 | 0.296 | 0.402 | 0.232 |
| g14 | Confirmed TB animal prevalence in 2007 (%) | 0.240 | 0.237 | 0.116 | 0.142 | 0.233 | 0.335 | 0.083 | 0.080 | 0.313 | 0.418 | 0.189 |
| g15 | Confirmed TB animal prevalence in 2006 (%) | 0.228 | 0.267 | 0.088 | 0.153 | 0.216 | 0.425 | 0.074 | 0.148 | 0.398 | 0.506 | 0.172 |
| g16 | Confirmed TB animal prevalence in 2005 (%) | 0.260 | 0.204 | 0.142 | 0.168 | 0.242 | 0.319 | 0.048 | 0.125 | 0.352 | 0.595 | 0.196 |
| g17 | Confirmed TB animal prevalence in 2004 (%) | 0.290 | 0.243 | 0.242 | 0.327 | 0.342 | 0.445 | 0.146 | 0.057 | 0.358 | 0.740 | 0.306 |

| | | | | | | | | | | | | |
|-----|---|------|------|------|------|------|------|------|------|------|-------|------|
| g19 | No. herds with confirmed TB in current year | 1077 | 104 | 49 | 134 | 107 | 131 | 30 | 24 | 225 | 146 | 127 |
| g37 | No. herds with confirmed TB in last 12 months | 1289 | 122 | 57 | 155 | 138 | 160 | 44 | 35 | 258 | 174 | 146 |
| g38 | No. herds with confirmed TB in last 13-24 months | 1450 | 135 | 63 | 144 | 161 | 198 | 43 | 41 | 275 | 216 | 174 |
| g24 | No. herds with confirmed TB in 2008 | 1412 | 129 | 57 | 138 | 160 | 197 | 50 | 46 | 271 | 207 | 157 |
| g20 | No. herds with confirmed TB in 2007 | 1507 | 185 | 56 | 127 | 184 | 200 | 49 | 31 | 266 | 230 | 179 |
| g21 | No. herds with confirmed TB in 2006 | 1664 | 194 | 68 | 147 | 202 | 222 | 59 | 60 | 278 | 263 | 171 |
| g22 | No. herds with confirmed TB in 2005 | 1856 | 169 | 104 | 235 | 244 | 216 | 63 | 50 | 262 | 298 | 215 |
| g23 | No. herds with confirmed TB in 2004 | 1861 | 129 | 95 | 277 | 239 | 277 | 53 | 21 | 238 | 280 | 252 |
| g25 | Confirmed TB herd prevalence in current year (%) | 5.56 | 5.26 | 4.68 | 6.51 | 4.52 | 5.04 | 2.44 | 3.39 | 6.80 | 9.28 | 5.09 |
| g39 | Confirmed TB herd prevalence in last 12 months (%) | 5.61 | 5.48 | 4.16 | 6.10 | 4.90 | 5.24 | 2.63 | 4.06 | 7.15 | 9.68 | 4.82 |
| g40 | Confirmed TB herd prevalence in last 13-24 months (%) | 6.24 | 6.04 | 4.46 | 5.64 | 5.72 | 6.44 | 2.52 | 4.63 | 7.55 | 11.88 | 5.60 |
| g30 | Confirmed TB herd prevalence in 2008 (%) | 6.18 | 5.79 | 4.14 | 5.46 | 5.78 | 6.58 | 3.05 | 5.33 | 7.56 | 11.52 | 5.13 |
| g26 | Confirmed TB herd prevalence in 2007 (%) | 6.37 | 8.21 | 3.88 | 4.77 | 6.39 | 6.41 | 2.88 | 3.61 | 7.21 | 12.16 | 5.70 |
| g27 | Confirmed TB herd prevalence in 2006 (%) | 6.85 | 8.19 | 4.55 | 5.43 | 6.86 | 7.00 | 3.38 | 6.43 | 7.38 | 13.50 | 5.31 |
| g28 | Confirmed TB herd prevalence in 2005 (%) | 7.48 | 6.95 | 6.80 | 8.32 | 8.05 | 6.74 | 3.56 | 5.53 | 6.82 | 14.86 | 6.55 |
| g29 | Confirmed TB herd prevalence in 2004 (%) | 7.34 | 5.23 | 5.98 | 9.63 | 7.64 | 8.45 | 2.80 | 2.19 | 6.21 | 13.87 | 7.62 |

Explanatory Comments for Tuberculosis Statistics - B. Testing Herds

| | | |
|-----|--|--|
| B16 | No. herds with any test completed in month | Test of any disease status and size (herd or animal-level). Tests with no animals are excluded. |
| B17 | No. herds with any test, from start of year | Test of any disease status and size (herd or animal-level) carried out on a herd since 1st January. Tests with no animals are excluded. |
| B29 | All herds with any test, from start of year | Skin test of any disease status and size (herd or animal-level) carried out on a herd since 1st January. Tests with no animals are included. |
| B18 | No. herds with any test, from start of year (no cattle) | Herd or individual test of any disease status (routine, risk or restricted) where no cattle were recorded at all such tests since 1st January |
| B19 | No. herds with herd test completed in month | Herd level test of any disease status (routine, risk or restricted) completed during the above month. Tests with no animals are excluded. |
| B20 | No. herds with herd test, from start of year | Herd level test of any disease status (routine, risk or restricted) completed since 1st January. Tests with no animals are excluded. |
| B30 | All herds with herd test, from start of year | Herd level test of any disease status (routine, risk or restricted) completed since 1st January. Tests with no animals are included. |
| B21 | No. herds with herd test, from start of year (no cattle) | Herd level test of any disease status (routine, risk or restricted) where no cattle were recorded at all such herd tests since 1st January. |
| B22 | No. herds with herd test during last 12 months | Herd level test of any disease status (routine, risk or restricted) completed in the 12 month period from the above month. Tests with no animals are excluded. |
| B31 | No. herds with herd test during last 13-24 months | Herd level test of any disease status (routine, risk or restricted) completed in the 13-24 months from the above month. Tests with no animals are excluded. |
| B39 | No. herds with herd test during 2005 | Herd level test of any disease status (routine, risk or restricted) completed in the calendar year. Tests with no animals are excluded. |
| B32 | No. herds with herd test during 2009 | Herd level test of any disease status (routine, risk or restricted) completed in the calendar year. Tests with no animals are excluded. |
| B28 | No. herds with herd test during 2008 | Herd level test of any disease status (routine, risk or restricted) completed in the calendar year. Tests with no animals are excluded. |
| B23 | No. herds with herd test during 2007 | Herd level test of any disease status (routine, risk or restricted) completed in the calendar year. Tests with no animals are excluded. |
| B24 | No. herds with herd test during 2006 | Herd level test of any disease status (routine, risk or restricted) completed in the calendar year. Tests with no animals are excluded. |
| B25 | No. herds with any risk test completed | Herd has had a herd or individual level risk test since start of calendar year and number tested > 0 |
| B26 | No. herds with herd risk test completed | Herd has had a herd level risk test since start of calendar year and number tested > 0. |
| B27 | No. herds with restricted herd test completed | Herd has had a restricted herd test (RHT, RH1, RH2) since start of calendar year and number tested |

Explanatory Comments for Tuberculosis Statistics - C. Testing Animals

| Ref | Data Title | Explanation |
|-----|---|---|
| C1 | Total number of tests in current month | Number of herds and individual tests performed in the month stated above. Tests with no animals are excluded |
| C2 | Total number of tests from start of year | From 1st January. Tests with no animals are excluded. |
| C3 | No. tests during the same time period in the previous year | From 1st January of previous year. Tests with no animals are excluded. |
| C4 | % change between years | Difference between the number of tests carried out during the current year and the number carried out in the previous expressed as a percentage. |
| C5 | No. tests in the previous 12 months | Last 12 month period from the above month. Tests with no animals are excluded. |
| C6 | No. animal tests in current month | Animal test = a count of the number of animals tested within each herd or individual test. Some animals may have been tested multiple times during the year. |
| C7 | No. animal tests from start of year | Number of animal tests carried out since 1st January. |
| C8 | No. animal tests during the same time period in the previous year | Number of animal tests carried out from 1st January in the previous year over the same time interval as recorded for the current year. |
| C9 | % change between years | Difference between the number of animal tests during the current year and the number carried out in the previous expressed as a percentage. |
| C10 | No. animal tests in previous 12 months | Last 12 month period from the above month. |
| C11 | No. cattle eligible for TB testing | Based on the average number of animals presented at TB herd tests over last 4 years. |
| C12 | No. cattle herds eligible for TB testing | Based on cattle being presented for a TB herd tests over last 4 years. Herds with '0' cattle are excluded. |
| C13 | No. restricted herd tests during month | All restricted herd tests (RHT, RH1 and RH2) carried out during the above month. |
| C14 | No. animals tested | Total of the animals reported as being tested within restricted herd tests (RHT, RH1, RH2) during the above month. |
| C15 | No. herd tests during month | Total of the animals reported as being tested within all herd tests during the above month. |
| C16 | No. animals tested | Total of the animals reported as being tested within all herd tests during the above month. |
| C17 | No. individual tests during month | Total of the animals reported as being tested within all individual tests during the above month. |
| C18 | No. animals tested | Total of the animals reported as being tested within all individual tests during the above month. |
| C23 | No. animals TB tested since start of year | Animals identified as having had at least one TB skin test since the start of the calendar year. Due to the same animals being sampled in different DVO areas, the 'Total' is not the sum of the DVO figures. |
| C19 | No. animals TB tested in previous 12 months | Animals identified as having had at least one TB skin test during the last 12 month period from the above month. Due to the same animals being sampled in different DVO areas, the 'Total' is not the sum of the DVO figures. |
| C24 | No. animals TB tested in previous 13-24 months | Animals identified as having had at least one TB skin test during the last 13-24 months from the above month. Due to the same animals being sampled in different DVO areas, the 'Total' is not the sum of the DVO figures |
| C26 | No. animals TB tested in 2005 | Animals identified as having had at least one TB skin test during the calendar year. Due to the same animals being sampled in different DVO areas, the 'Total' is not the sum of the DVO figures. |
| C25 | No. animals TB tested in 2009 | Animals identified as having had at least one TB skin test during the calendar year. Due to the same animals being sampled in different DVO areas, the 'Total' is not the sum of the DVO figures. |
| C22 | No. animals TB tested in 2008 | Animals identified as having had at least one TB skin test during the calendar year. Due to the same animals being sampled in different DVO areas, the 'Total' is not the sum of the DVO figures. |
| C20 | No. animals TB tested in 2007 | Animals identified as having had at least one TB skin test during the calendar year. Due to the same animals being sampled in different DVO areas, the 'Total' is not the sum of the DVO figures. |
| C21 | No. animals TB tested in 2006 | Animals identified as having had at least one TB skin test during the calendar year. Due to the same animals being sampled in different DVO areas, the 'Total' is not the sum of the DVO figures. |

Explanatory Comments for Tuberculosis Statistics - D. Results

| Ref | Data Title | Explanation |
|-----|--|---|
| D1 | No. of herds with TB reactors during month | A herd is included in this figure if the herd number had a TB skin test reactor during the above month. |
| D2 | No. of new reactor herds during month | A herd is defined as being a TB reactor herd if it had at least one TB reactor animal in that month and no TB reactor animals during the previous 12 months. |
| D3 | No. of new reactor herds since start of year | = Since 1st January |
| D4 | No. of new reactor herds in the previous 12 months | Last 12 month period from the above month. |
| D26 | No. of new reactor herds in previous 13-24 months | Last 13-24 month period from the above month. |
| D5 | No. of TB reactor animals during month | A TB reactor animal is defined as an animal where the manual interpretation field for a skin test is positive ('P') with the first test date being taken as the time at which the animal became a reactor. Currently animals with lesionas at routine slaughter ("LRS")are not taken into account |
| D6 | No. of TB reactor animals since start of year | = Since 1st January |
| D7 | No. of reactor animals in the previous 12 months | Last 12 month period from the above month. |
| D27 | No. of reactor animals in previous 13-24 months | Last 13-24 month period from the above month. |
| D8 | Herd Prevalence (%) | Number of herds with a TB reactor during the above month as a proportion of cattle herds which have presented cattle for a TB herd test during the same time period. |
| D20 | Cumulative herd incidence in year (%) | Number of NEW reactor herds since the start of the calendar year as a proportion of cattle herds which have presented cattle for a TB herd test during the same time period. |
| D9 | Annual herd incidence over the last 12 months (%) | Number of NEW reactor herds during the last 12 months as a proportion of cattle herds which have presented cattle for a TB herd test during the same time period. |
| D28 | Annual herd incidence over the last 13-24 months (%) | Number of NEW reactor herds during the last 13-24 months as a proportion of cattle herds which have presented cattle for a TB herd test during the same time period. |
| D38 | 2005 Herd Incidence (%) | Number of NEW reactor herds during the year as a proportion of cattle herds which have presented cattle for a TB herd test during the same time period. |
| D30 | 2009 Herd Incidence (%) | Number of NEW reactor herds during the year as a proportion of cattle herds which have presented cattle for a TB herd test during the same time period. |
| D16 | 2008 Herd Incidence (%) | Number of NEW reactor herds during the year as a proportion of cattle herds which have presented cattle for a TB herd test during the same time period. |
| D10 | 2007 Herd Incidence (%) | Number of NEW reactor herds during the year as a proportion of cattle herds which have presented cattle for a TB herd test during the same time period. |
| D11 | 2006 Herd Incidence (%) | Number of NEW reactor herds during the year as a proportion of cattle herds which have presented cattle for a TB herd test during the same time period. |
| D21 | Cumulative animal incidence in year (%) | Number of reactor animals during the above month as a proportion of cattle which have been presented for a TB test during the same time period. |
| D12 | Annual animal incidence over the last 12 months (%) | Number of reactor animals during the last 12 months as a proportion of cattle which have been presented for a TB test during the same time period. |
| D29 | Annual animal incidence over the last 13-24 months (%) | Number of reactor animals during the last 13-24 months as a proportion of cattle which have been presented for a TB test during the same time period. |
| D39 | 2005 Animal Incidence (%) | Number of reactor animals during the year as a proportion of cattle which have been presented for a TB herd test during the same time period. |
| D31 | 2009 Animal Incidence (%) | Number of reactor animals during the year as a proportion of cattle which have been presented for a TB herd test during the same time period. |
| D15 | 2008 Animal Incidence (%) | Number of reactor animals during the year as a proportion of cattle which have been presented for a TB herd test during the same time period. |
| D13 | 2007 Animal Incidence (%) | Number of reactor animals during the year as a proportion of cattle which have been presented for a TB herd test during the same time period. |
| D14 | 2006 Animal Incidence (%) | Number of reactor animals during 2006 as a proportion of cattle which have been presented for a TB herd test during the same time period. |

| | | |
|------------|---|---|
| D34 | APT during current month | = The reactor disclosure rate per 1,000 animal tests current calendar month. |
| D22 | APT since start of year | The reactor disclosure rate per 1,000 animal tests since the start of the calendar year. |
| D17 | Current 12 month moving average APT | The reactor disclosure rate per 1,000 animal tests. Current refers to the rate over the last 12 months. |
| D42 | 2006 APT | The reactor disclosure rate per 1,000 animal tests during the calendar year. |
| D40 | 2005 APT | The reactor disclosure rate per 1,000 animal tests during the calendar year. |
| D32 | 2009 APT | The reactor disclosure rate per 1,000 animal tests during the calendar year. |
| D18 | 2008 APT | The reactor disclosure rate per 1,000 animal tests during the calendar year. |
| D19 | 2007 APT | The reactor disclosure rate per 1,000 animal tests during the calendar year. |
| D23 | No. negative in contacts since start of year | Number of animals taken as negative in contacts since the start of the year |
| d46 | No. Negative in contacts over last 12 months (%) | = Number of negative in contacts during the last 12 months |
| D43 | No. negative in contacts during 2006 | Number of animals taken as negative in contacts during the year |
| D41 | No. negative in contacts during 2005 | Number of animals taken as negative in contacts during the year |
| D33 | No. negative in contacts during 2004 | Number of animals taken as negative in contacts during the year |
| D24 | No. negative in contacts during 2008 | Number of animals taken as negative in contacts during the year |
| D25 | No. negative in contacts during 2007 | Number of animals taken as negative in contacts during the year |
| D37 | Reactor removal time 2008 | Figures given are median values for working days estimated from calendar days (calendar days multiplied by 0.685). Reactors which are not yet slaughtered or where they they were first declared as reactors at slaughter are excluded. |
| D45 | Reactor removal time 2007 | Figures given are median values for working days estimated from calendar days (calendar days multiplied by 0.685). Reactors which are not yet slaughtered or where they they were first declared as reactors at slaughter are excluded. |
| D35 | Reactor removal time 2006 | Figures given are median values for working days estimated from calendar days (calendar days multiplied by 0.685). Reactors which are not yet slaughtered or where they they were first declared as reactors at slaughter are excluded. |
| D44 | Reactor removal time 2005 | Figures given are median values for working days estimated from calendar days (calendar days multiplied by 0.685). Reactors which are not yet slaughtered or where they they were first declared as reactors at slaughter are excluded. |
| D36 | Reactor removal time 2009 | Figures given are median values for working days estimated from calendar days (calendar days multiplied by 0.685). Reactors which are not yet slaughtered or where they they were first declared as reactors at slaughter are excluded. |

Explanatory Comments for LRS Data

| | | |
|------------|---|---|
| E1 | No. TB animals found at routine slaughter in current year | Animals where M. bovis was cultured from TB-like lesions found at routine slaughter (LRS) during the year that were not identified as TB reactor animals |
| E19 | No. TB animals found at routine slaughter in last 12 months | Animals where M. bovis was cultured from TB-like lesions found at routine slaughter (LRS) during the last 12 months that were not identified as TB reactor animals |
| E20 | No. TB animals found at routine slaughter in last 13-24 months | Animals where M. bovis was cultured from TB-like lesions found at routine slaughter (LRS) during the last 12-24 months that were not identified as TB reactor animals |
| E6 | No. TB animals found at routine slaughter in 2008 | Animals where M. bovis was cultured from TB-like lesions found at routine slaughter (LRS) during the year that were not identified as TB reactor animals |
| E20 | No. TB animals found at routine slaughter in 2007 | Animals where M. bovis was cultured from TB-like lesions found at routine slaughter (LRS) during the year that were not identified as TB reactor animals |
| E3 | No. TB animals found at routine slaughter in 2006 | Animals where M. bovis was cultured from TB-like lesions found at routine slaughter (LRS) during the year that were not identified as TB reactor animals |
| E4 | No. TB animals found at routine slaughter in 2005 | Animals where M. bovis was cultured from TB-like lesions found at routine slaughter (LRS) during the year that were not identified as TB reactor animals |
| E5 | No. TB animals found at routine slaughter in 2004 | Animals where M. bovis was cultured from TB-like lesions found at routine slaughter (LRS) during the year that were not identified as TB reactor animals |
| | | |
| E7 | No. herds with TB found at routine slaughter in current year | Herds where M. bovis was cultured from TB-like lesions found in at least one animal at routine slaughter (LRS) during the year |
| E21 | No. herds with TB found at routine slaughter in last 12 months | Herds where M. bovis was cultured from TB-like lesions found in at least one animal at routine slaughter (LRS) during the last 12 months |
| E22 | No. herds with TB found at routine slaughter in last 13-24 months | Herds where M. bovis was cultured from TB-like lesions found in at least one animal at routine slaughter (LRS) during the last 13-24 months |
| E12 | No. herds with TB found at routine slaughter in 2008 | Herds where M. bovis was cultured from TB-like lesions found in at least one animal at routine slaughter (LRS) during the year |
| E8 | No. herds with TB found at routine slaughter in 2007 | Herds where M. bovis was cultured from TB-like lesions found in at least one animal at routine slaughter (LRS) during the year |
| E9 | No. herds with TB found at routine slaughter in 2006 | Herds where M. bovis was cultured from TB-like lesions found in at least one animal at routine slaughter (LRS) during the year |
| E10 | No. herds with TB found at routine slaughter in 2005 | Herds where M. bovis was cultured from TB-like lesions found in at least one animal at routine slaughter (LRS) during the year |
| E11 | No. herds with TB found at routine slaughter in 2004 | Herds where M. bovis was cultured from TB-like lesions found in at least one animal at routine slaughter (LRS) during the year |
| | | |
| E13 | % of TB animals that were LRS in current year | Herds where M. bovis was cultured from TB-like lesions found in at least one animal at routine slaughter (LRS) during the year |
| E23 | % of TB animals that were LRS in last 12 months | Number of confirmedLRS animals divided by the number of TB reactors and confirmed LRS animals during the year expressed as a % |
| E24 | % of TB animals that were LRS in last 13-24 months | Number of confirmedLRS animals divided by the number of TB reactors and confirmed LRS animals during the year expressed as a % |
| E18 | % of TB animals that were LRS in 2008 | Number of confirmedLRS animals divided by the number of TB reactors and confirmed LRS animals during the year expressed as a % |
| E14 | % of TB animals that were LRS in 2007 | Number of confirmedLRS animals divided by the number of TB reactors and confirmed LRS animals during the year expressed as a % |
| E15 | % of TB animals that were LRS in 2006 | Number of confirmedLRS animals divided by the number of TB reactors and confirmed LRS animals during the year expressed as a % |
| E16 | % of TB animals that were LRS in 2005 | Number of confirmedLRS animals divided by the number of TB reactors and confirmed LRS animals during the year expressed as a % |
| E17 | % of TB animals that were LRS in 2004 | Number of confirmedLRS animals divided by the number of TB reactors and confirmed LRS animals during the year expressed as a % |