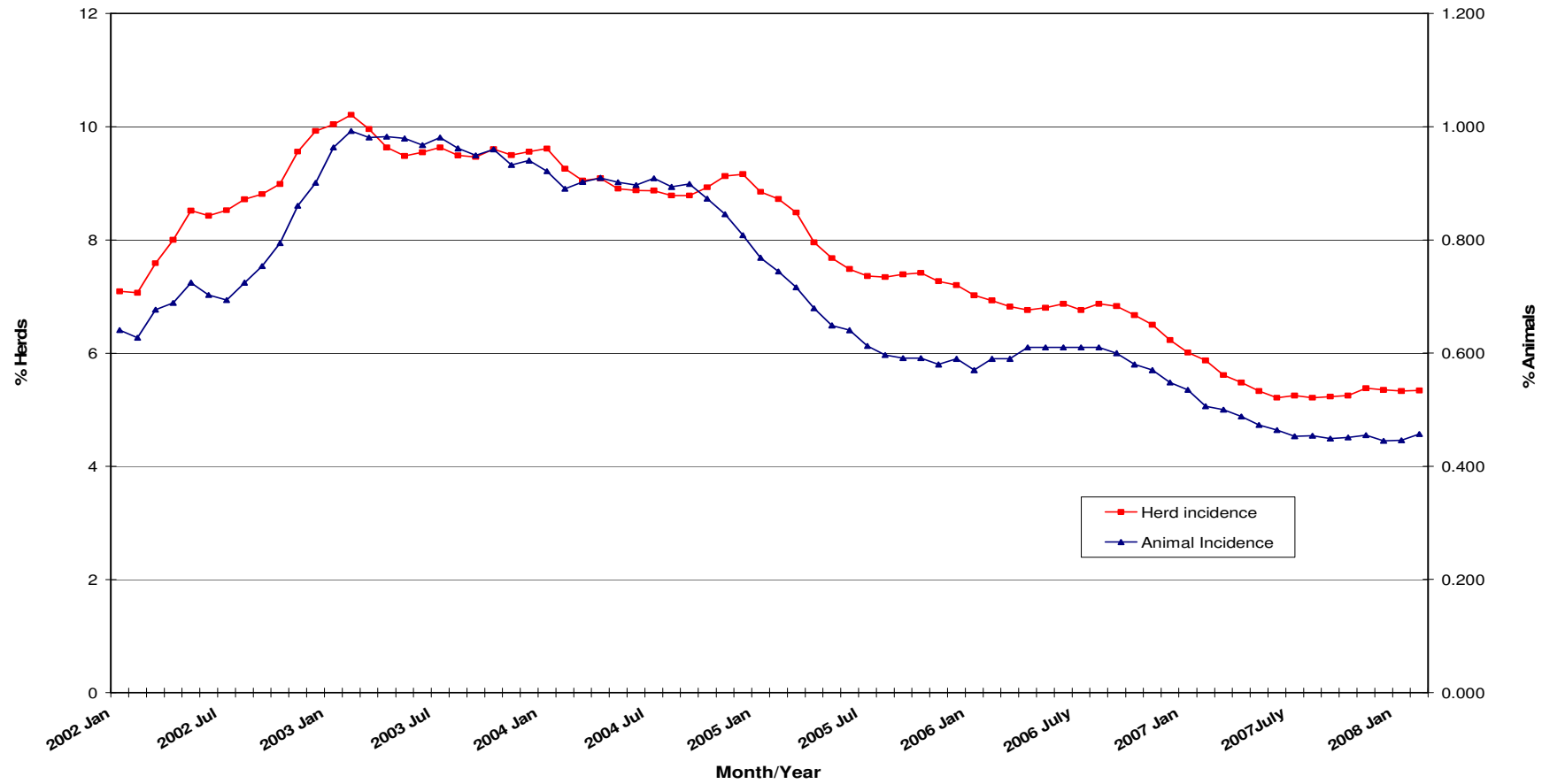
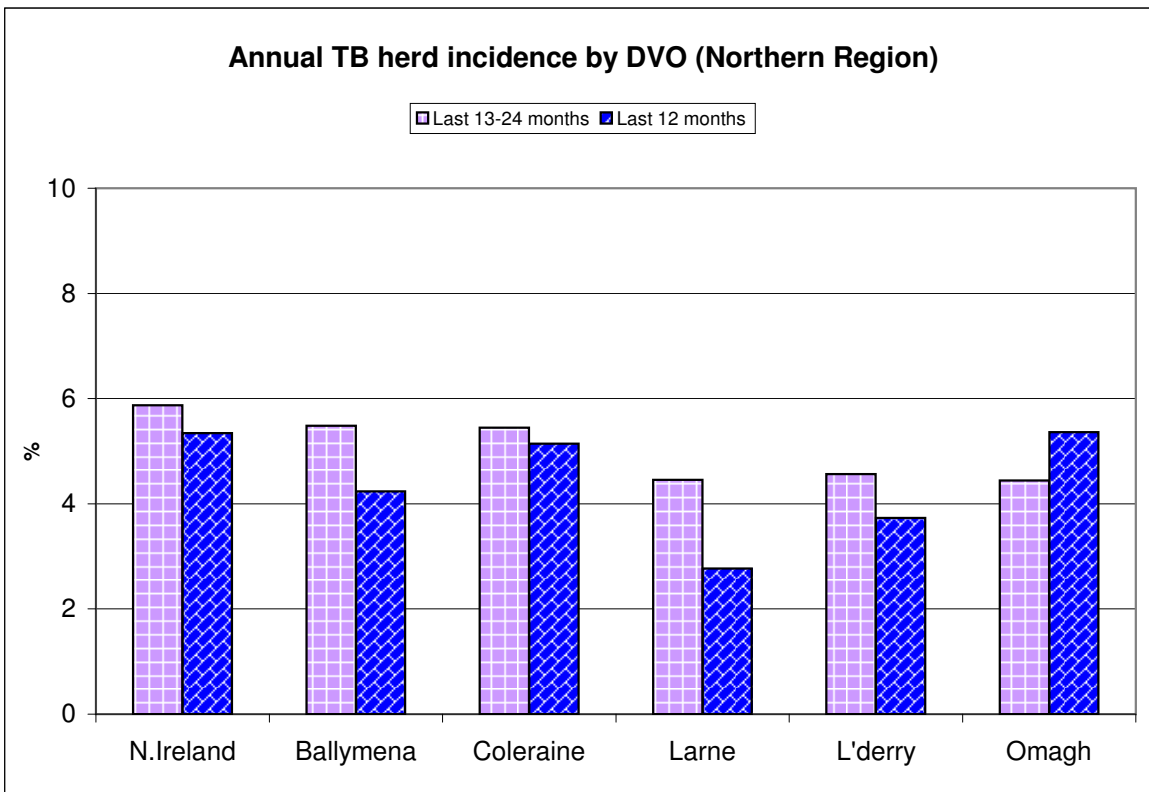
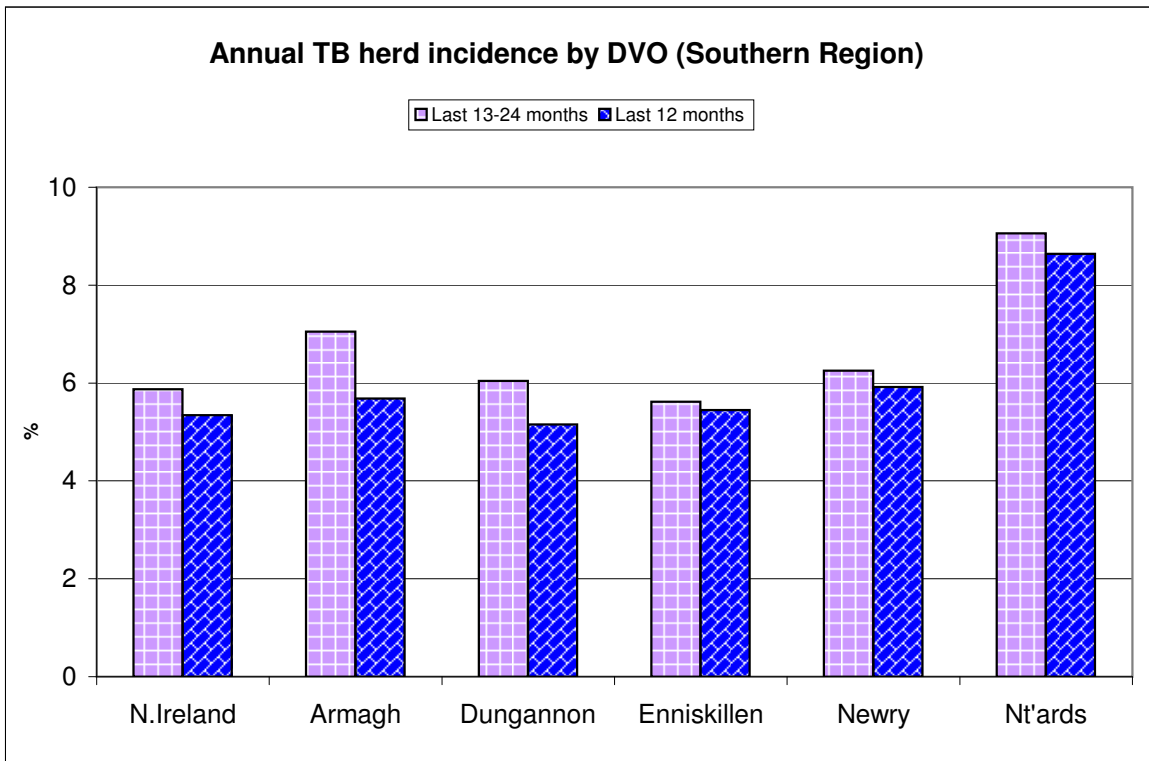


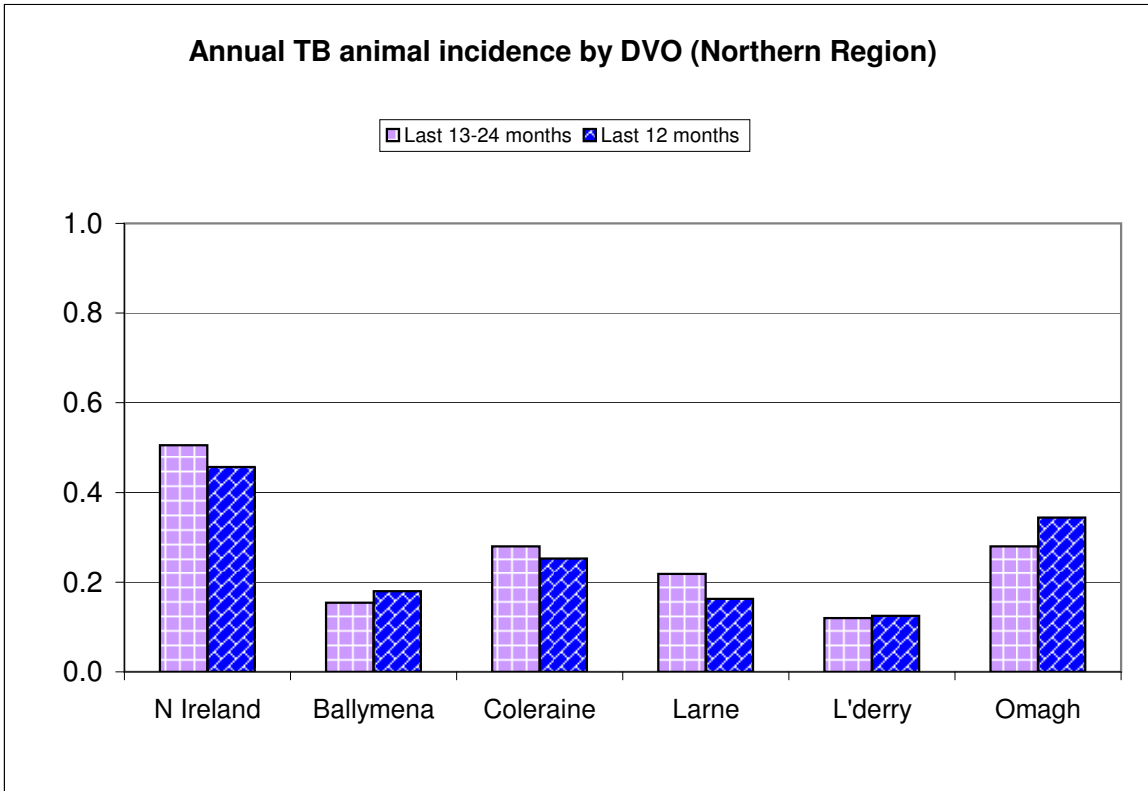
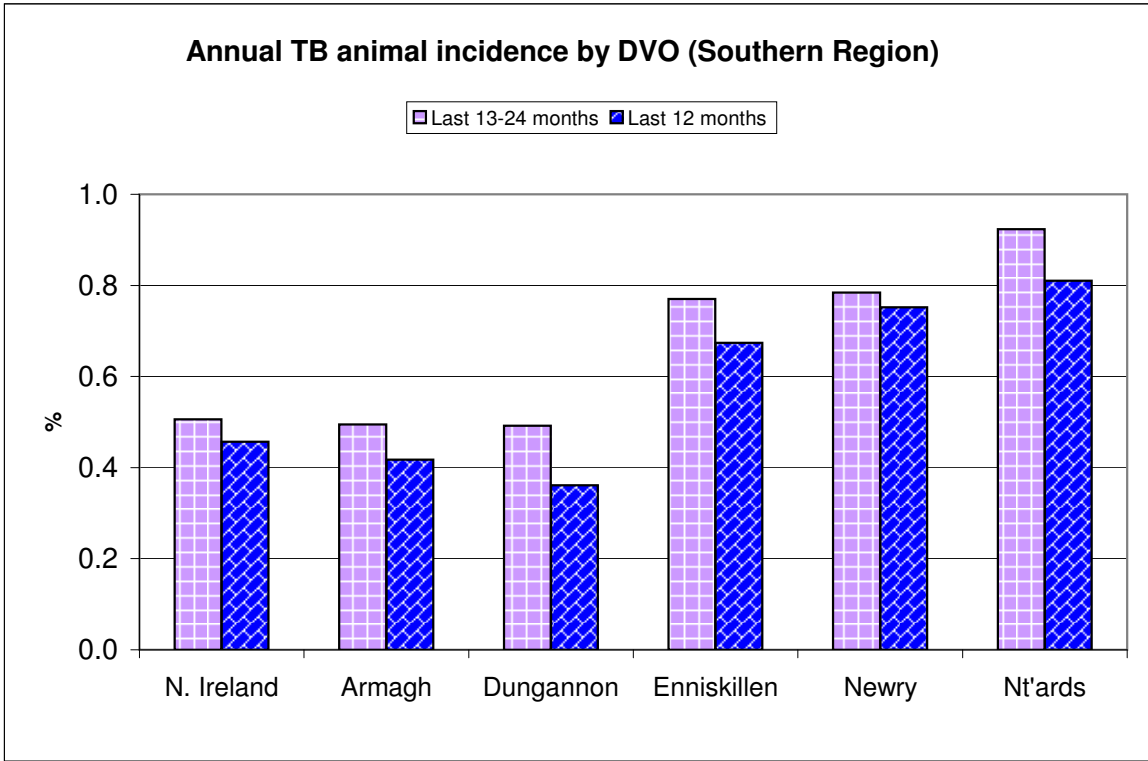
**Tuberculosis: Statistics for February 2008**

<b>Tests Completed</b>	Herds	<a href="#">Number of herds tested (any test), by DVO</a>	<a href="#">Cumulative Statistics</a>	
		<a href="#">Number of herds with herd-level test, by DVO</a>	<a href="#">Cumulative Statistics</a>	
		<a href="#">Number of herds with any risk test, by DVO</a>		
		<a href="#">Number of herds with herd-level risk test, by DVO</a>		
		<a href="#">Number of herds with herd-level restricted test, by DVO</a>		
	Animals	<a href="#">Total number of tests performed, by DVO</a>	<a href="#">Cumulative Statistics</a>	
		<a href="#">Total number of animals tests, by DVO</a>	<a href="#">Cumulative Statistics</a>	
		<a href="#">Total number of restricted herd tests, by DVO</a>	<a href="#">Number of animals tested</a>	
		<a href="#">Total number of herd tests, by DVO</a>	<a href="#">Number of animals tested</a>	
		<a href="#">Total number of individual tests, by DVO</a>	<a href="#">Number of animals tested</a>	
<a href="#">Total number of animals tested, by DVO</a>				
<b>Summary Statistics</b>	<a href="#">Herds with TB reactors during month, by DVO</a>	<a href="#">Cumulative Statistics</a>	<a href="#">APT</a>	
	<a href="#">Number of new reactor herds, by DVO</a>	<a href="#">Cumulative Statistics</a>	<a href="#">Negative-in-contacts</a>	
	<a href="#">Number of new reactor animals, by DVO</a>		<a href="#">Reactor removal times</a>	
	<a href="#">Herd Prevalance</a>			
	<a href="#">Herd Incidence</a>			
	<a href="#">Animal Incidence</a>			
	<a href="#">Number of reactor animals by month and by DVO</a>			
	<a href="#">Number of new reactor herds by month and by DVO</a>			
<b>Summary Charts</b>	<a href="#">Current Animal Incidence Chart</a>	<a href="#">Monthly TB reactors chart</a>		
	<a href="#">Yearly Animal Incidence Chart</a>	<a href="#">New TB reactor herds</a>		
	<a href="#">Current Herd Incidence Chart</a>	<a href="#">TB Herd &amp; Animal Incidence</a>		
	<a href="#">Yearly Herd Incidence Chart</a>			
	<a href="#">Outstanding TB Tests Chart</a>			

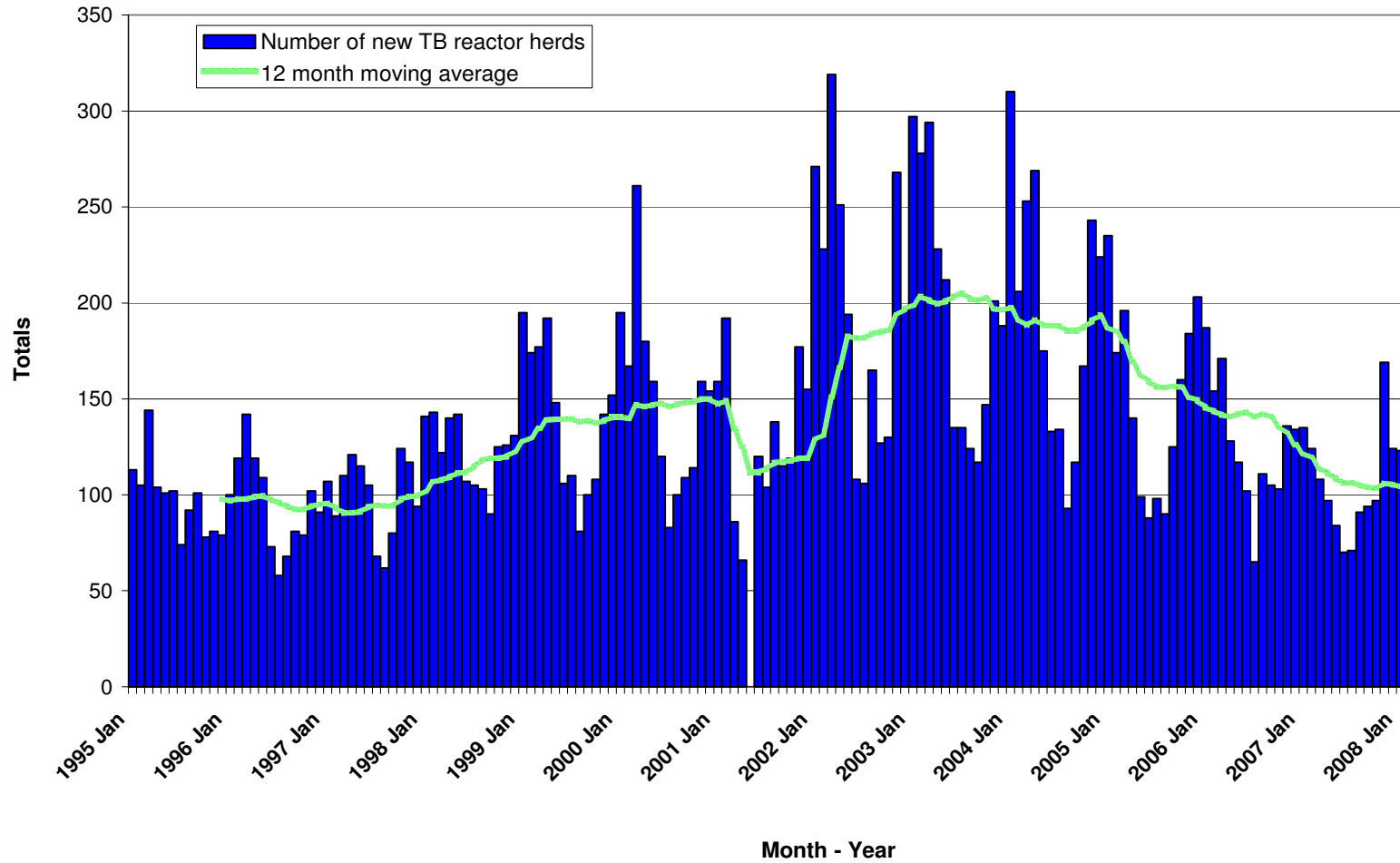
**TB Herd and Animal Incidence:**  
 (12 month moving average: January 2002 to February 2008)



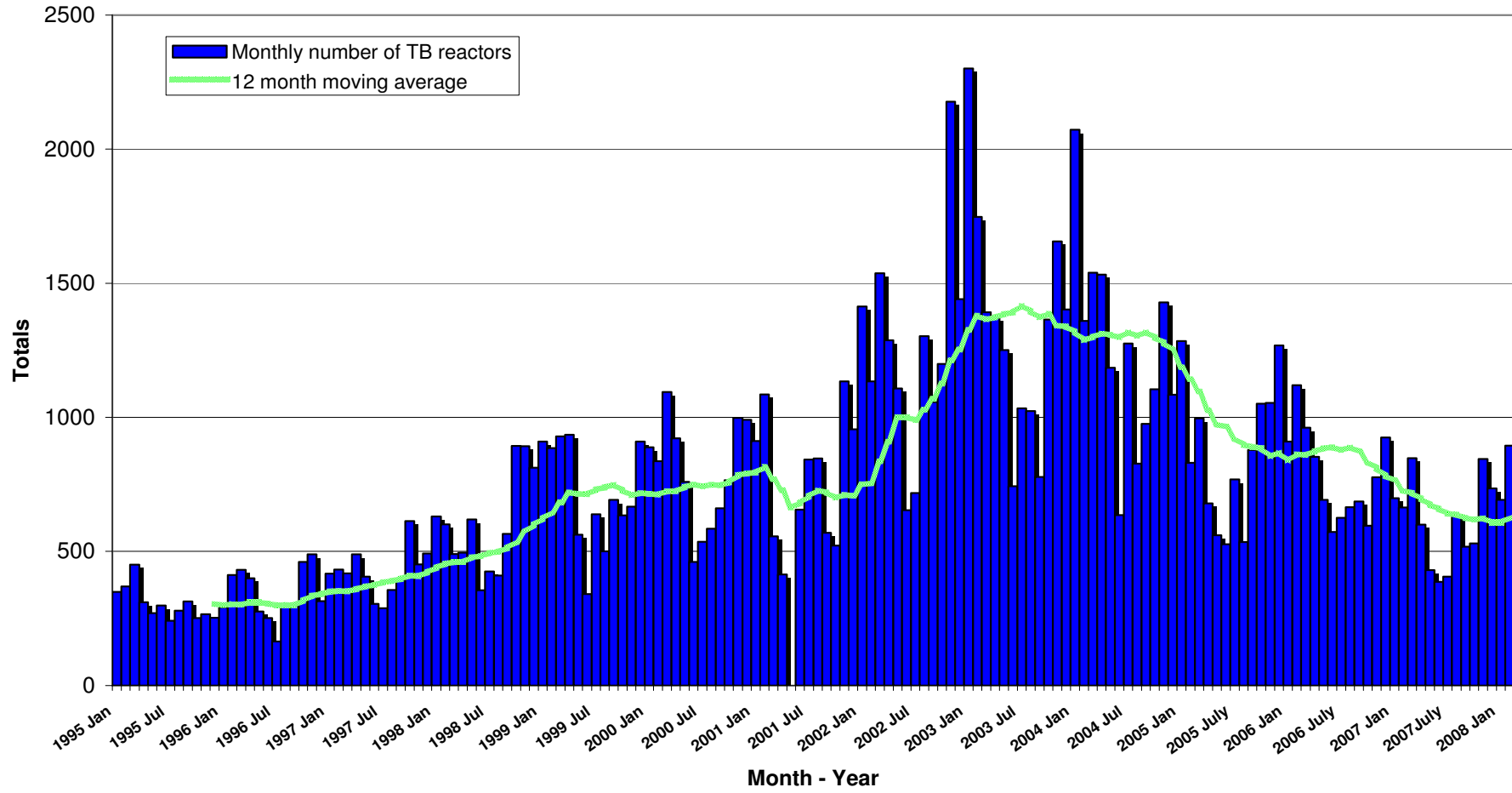


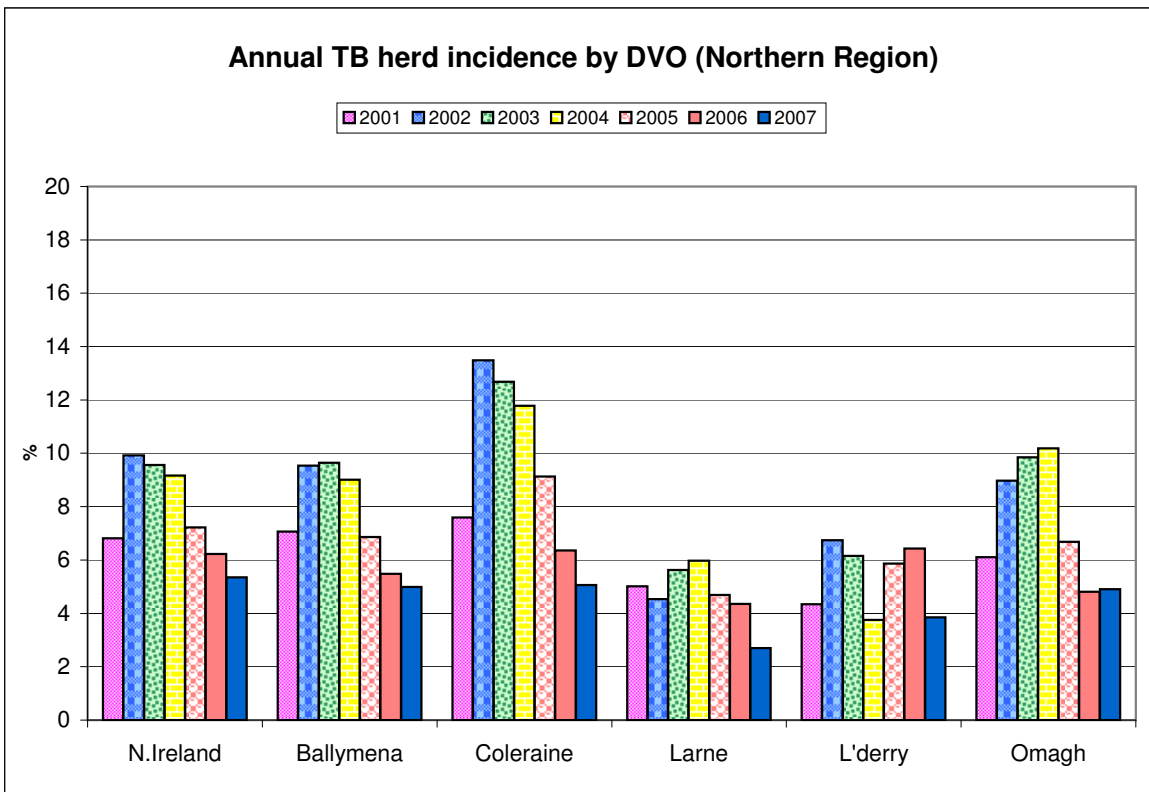
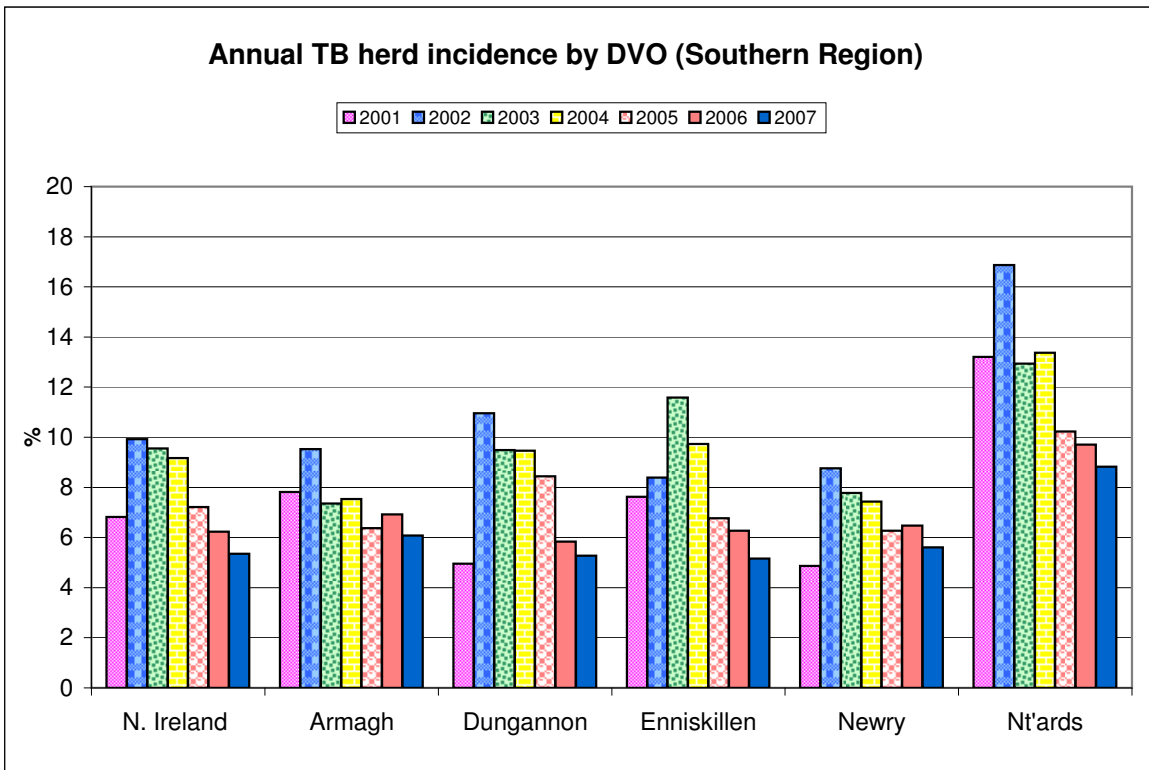


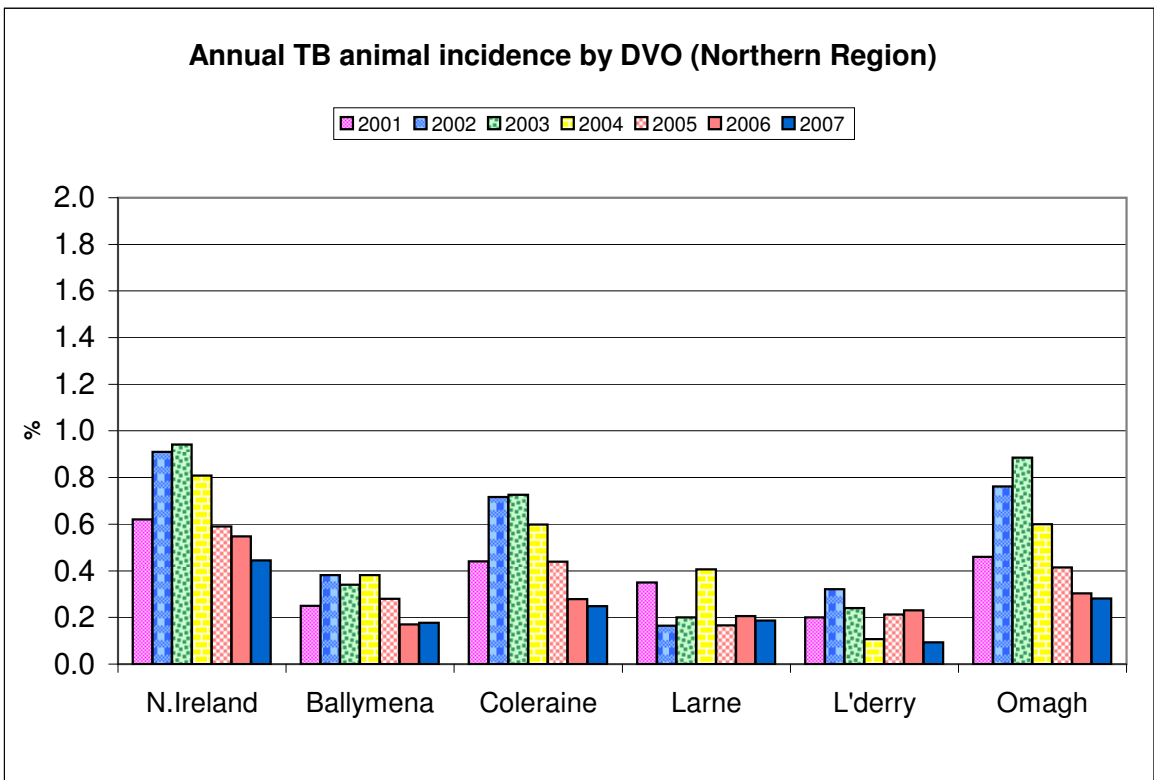
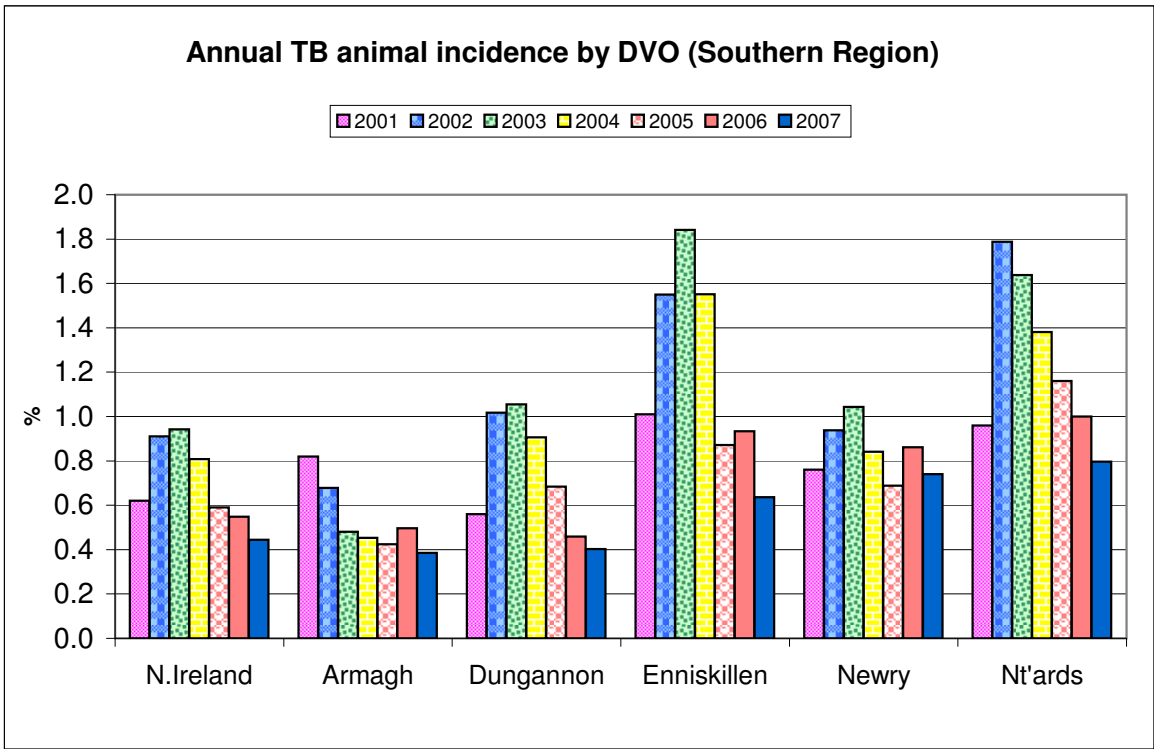
New TB Reactor Herds: January 1995 to February 2008



TB Reactors: January 1995 to February 2008







**Month = February 2008**

Ref.	Total	Armagh	Ballymena	Coleraine	Dungannon	Enniskillen	Larne	L'derry	Newry	Nt'ards	Omagh	
d1	<b>No. of herds with TB reactors during month</b>	<b>234</b>	<b>20</b>	<b>5</b>	<b>22</b>	<b>27</b>	<b>30</b>	<b>12</b>	<b>6</b>	<b>47</b>	<b>32</b>	<b>33</b>
d2	<b>No. of new reactor herds during month</b>	<b>141</b>	<b>11</b>	<b>4</b>	<b>15</b>	<b>16</b>	<b>19</b>	<b>7</b>	<b>3</b>	<b>28</b>	<b>15</b>	<b>23</b>
d3	No. of new reactor herds since start of year	264	21	10	29	32	38	16	7	45	21	45
d4	No. of new reactor herds in the previous 12 months	1269	129	61	135	148	169	47	33	217	161	169
d26	No. of new reactor herds in the previous 13-24 months	1431	166	82	148	178	180	78	43	235	177	144
d5	<b>No. of TB reactor animals during month</b>	<b>895</b>	<b>107</b>	<b>6</b>	<b>96</b>	<b>86</b>	<b>126</b>	<b>31</b>	<b>13</b>	<b>173</b>	<b>126</b>	<b>131</b>
d6	No. of TB reactor animals since start of year	1587	184	32	161	172	250	46	32	253	230	227
d7	No. of reactor animals in the previous 12 months	7523	732	205	535	731	1166	226	79	1693	1442	714
d27	No. of reactor animals in the previous 13-24 months	8716	897	187	624	1040	1405	322	83	1829	1721	608
d8	<b>Herd Prevalence (%)</b>	<b>6.84</b>	6.06	2.55	6.92	7.03	7.09	4.74	4.69	8.70	9.55	6.45
d20	<b>Cumulative herd incidence in year (%)</b>	<b>3.83</b>	0.93	0.69	1.11	1.11	1.23	0.94	0.79	1.23	1.13	1.43
d9	<b>Annual herd incidence over the last 12 months (%)</b>	<b>5.34</b>	5.69	4.24	5.14	5.15	5.45	2.77	3.73	5.92	8.64	5.36
d28	<b>Annual herd incidence over the last 13-24 months (%)</b>	<b>5.87</b>	7.05	5.48	5.45	6.04	5.62	4.45	4.56	6.25	9.06	4.44
d10	<b>2007 Herd Incidence (%)</b>	<b>5.35</b>	6.08	4.99	5.07	5.28	5.16	2.70	3.85	5.61	8.83	4.90
d11	<b>2006 Herd Incidence (%)</b>	<b>6.23</b>	6.92	5.48	6.36	5.84	6.27	4.36	6.43	6.48	9.70	4.81
d38	<b>2005 Herd Incidence (%)</b>	<b>7.22</b>	6.38	6.87	9.13	8.45	6.77	4.69	5.86	6.28	10.22	6.68
d30	<b>2004 Herd Incidence (%)</b>	<b>9.17</b>	7.54	9.01	11.78	9.47	9.73	5.97	3.75	7.44	13.37	10.19
d16	<b>2003 Herd Incidence (%)</b>	<b>9.56</b>	7.35	9.65	12.68	9.50	11.58	5.63	6.16	7.78	12.94	9.85
d21	<b>Cumulative animal incidence in year (%)</b>	<b>0.306</b>	0.886	0.095	0.290	0.307	0.445	0.095	0.158	0.382	0.349	0.343
d12	<b>Annual animal incidence over the last 12 months (%)</b>	<b>0.457</b>	0.418	0.180	0.252	0.361	0.674	0.163	0.125	0.752	0.810	0.344
d29	<b>Annual animal incidence over the last 13-24 months (%)</b>	<b>0.506</b>	0.495	0.154	0.280	0.492	0.770	0.218	0.120	0.784	0.923	0.280
d13	<b>2007 Animal Incidence (%)</b>	<b>0.445</b>	0.385	0.177	0.248	0.403	0.637	0.186	0.093	0.740	0.797	0.282
d14	<b>2006 Animal Incidence (%)</b>	<b>0.548</b>	0.496	0.170	0.279	0.459	0.934	0.205	0.230	0.862	1.000	0.304
d39	<b>2005 Animal Incidence (%)</b>	<b>0.590</b>	0.424	0.279	0.440	0.684	0.871	0.167	0.213	0.688	1.160	0.415

d31	<b>2004 Animal Incidence (%)</b>	<b>0.809</b>	0.453	0.381	0.598	0.907	1.551	0.406	0.108	0.842	1.380	0.600
d15	<b>2003 Animal Incidence (%)</b>	<b>0.942</b>	0.480	0.341	0.726	1.055	1.842	0.200	0.240	1.043	1.638	0.886
d34	<b>APT during current month</b>	<b>3.45</b>	4.09	0.36	3.51	3.08	4.57	1.50	1.15	5.13	3.61	3.97
d22	<b>APT since start of year</b>	<b>3.04</b>	3.60	0.95	2.88	3.03	4.43	0.94	1.57	3.80	3.47	3.42
d17	<b>Current 12 month moving average APT</b>	<b>3.14</b>	2.69	1.44	1.96	2.58	4.39	1.37	1.05	4.77	4.92	2.65
d19	<b>2007 APT</b>	<b>3.08</b>	2.49	1.44	1.94	2.88	4.24	1.56	0.77	4.69	4.95	2.20
d42	<b>2006 APT</b>	<b>3.49</b>	3.00	1.30	2.03	3.06	5.52	1.60	1.66	5.23	5.66	2.16
d40	<b>2005 APT</b>	<b>3.65</b>	2.58	2.01	2.86	4.28	5.44	1.25	1.67	4.08	6.28	2.73
d32	<b>2004 APT</b>	<b>4.86</b>	2.88	2.58	3.72	5.59	8.62	2.91	0.79	5.00	7.69	3.87
d18	<b>2003 APT</b>	<b>6.10</b>	3.17	2.39	4.83	7.19	11.62	1.59	1.77	6.29	9.84	6.03
d23	<b>No. negative in contacts since start of year</b>	<b>203</b>	13	0	7	6	1	0	0	13	116	47
d25	<b>No. negative in contacts during 2007</b>	<b>589</b>	38	3	15	49	59	14	1	40	248	122
d43	<b>No. negative in contacts during 2006</b>	<b>689</b>	4	1	58	122	106	2	14	83	240	59
d41	<b>No. negative in contacts during 2005</b>	<b>1208</b>	25	8	93	48	377	5	7	12	584	49
d33	<b>No. negative in contacts during 2004</b>	<b>673</b>	37	26	18	15	191	2	1	140	187	56
d24	<b>No. negative in contacts during 2003</b>	<b>259</b>	7	5	8	3	53	8	1	76	43	55
d45	<b>Reactor removal time 2007</b>	<b>12.3</b>	12.3	12.3	11.0	12.3	8.9	13.0	8.9	13.0	13.0	8.9
d35	<b>Reactor removal time 2006</b>	<b>13.0</b>	12.3	9.6	11.6	13.7	11.6	13.0	10.3	13.7	13.7	9.6
D44	<b>Reactor removal time 2005</b>	<b>13.0</b>	10.3	13.0	13.0	13.0	13.0	14.4	13.0	15.8	12.3	11.6
d36	<b>Reactor removal time 2004</b>	<b>16.4</b>	13.7	13.7	14.4	18.5	17.1	18.5	14.4	16.4	13.7	17.8
d37	<b>Reactor removal time 2003</b>	<b>17.8</b>	18.5	15.8	17.8	22.6	21.9	16.4	17.8	17.1	16.4	19.2

### **Tuberculosis: number of reactor herds by month and by DVO in 2008 and unique herd breakdowns during the year**

2008		DVO_CODE										
Year	Month	Armagh	Ballymena	Coleraine	Dungannon	Enniskillen	Larne	L'Derry	Newry	Nt'Ards	Omagh	Total
2008	1	10	6	14	16	19	9	4	17	6	22	123
2008	2	11	4	15	16	19	7	3	28	15	23	141
2008	3											0
2008	4											0
2008	5											0
2008	6											0
2008	7											0
2008	8											0
2008	9											0
2008	10											0
2008	11											0
2008	12											0
Total		21	10	29	32	38	16	7	45	21	45	264

Unique Herd Breakdowns		DVO_CODE										
Year	Armagh	Ballymena	Coleraine	Dungannon	Enniskillen	Larne	L'Derry	Newry	Nt'Ards	Omagh	Total Herds	
2008	42	14	40	51	66	22	10	77	52	63	437	

### **Tuberculosis: number of reactor herds by month and by DVO in 2007 and unique herd breakdowns during the year**

2007		DVO_CODE										
Year	Month	Armagh	Ballymena	Coleraine	Dungannon	Enniskillen	Larne	L'Derry	Newry	Nt'Ards	Omagh	Total
2007	1	17	11	15	24	13	10	0	20	14	11	135
2007	2	12	10	14	12	17	5	7	15	13	19	124
2007	3	10	5	13	15	25	3	5	12	10	10	108
2007	4	14	6	4	11	12	4	4	19	8	15	97
2007	5	11	3	8	7	9	1	1	16	13	15	84
2007	6	9	2	7	13	8	4	0	15	9	3	70
2007	7	7	3	5	6	11	1	2	17	7	12	71
2007	8	9	6	12	6	16	3	0	19	14	6	91
2007	9	9	3	10	15	9	3	1	20	16	8	94
2007	10	13	6	4	10	14	0	1	18	18	13	97
2007	11	17	10	31	19	18	5	7	20	25	17	169
2007	12	9	7	12	14	9	7	5	16	20	25	124
Total		137	72	135	152	161	46	33	207	167	154	1264

Unique Herd Breakdowns		DVO_CODE										
Year	Armagh	Ballymena	Coleraine	Dungannon	Enniskillen	Larne	L'Derry	Newry	Nt'Ards	Omagh	Total Herds	
2007	181	82	169	196	221	57	35	277	239	176	1633	

### **Tuberculosis: number of reactor herds by month and by DVO in 2006 and unique herd breakdowns during the year**

2006		DVO_CODE										
Year	Month	Armagh	Ballymena	Coleraine	Dungannon	Enniskillen	Larne	L'Derry	Newry	Nt'Ards	Omagh	Total
2006	1	17	14	29	15	27	5	9	28	15	28	187
2006	2	10	7	24	15	22	8	15	16	24	13	154
2006	3	18	13	18	21	20	12	7	27	18	17	171
2006	4	13	7	12	16	18	12	6	19	15	10	128
2006	5	10	7	8	8	16	10	5	23	18	12	117
2006	6	15	7	10	5	11	1	1	24	17	11	102
2006	7	4	0	5	9	6	5	4	16	10	6	65
2006	8	14	1	11	13	13	3	1	31	14	10	111
2006	9	15	5	10	16	12	1	4	22	9	11	105
2006	10	11	5	8	14	19	5	4	12	17	8	103
2006	11	18	7	15	23	20	6	2	13	15	17	136
2006	12	19	9	22	17	15	8	2	13	17	12	134
Total		164	82	172	172	199	76	60	244	189	155	1513

Unique Herd Breakdowns		DVO_CODE										
Year	Armagh	Ballymena	Coleraine	Dungannon	Enniskillen	Larne	L'Derry	Newry	Nt'Ards	Omagh	Total Herds	
2006	203	98	214	248	267	92	70	329	280	197	1998	

**A herd is defined as being a TB reactor herd if it had at least one TB reactor animal in that month and no TB reactor animals during the previous 12 months.**

**A TB unique herd breakdown is defined as a herd which has had at least one TB reactor during the specified calendar year irrespective of any TB reactors during the previous calendar year.**

**Tuberculosis: number of reactor animals by month and by DVO 2008**

2008	DVO_CODE											Total
Year	Month	Armagh	Ballymena	Coleraine	Dungannon	Enniskillen	Larne	L'Derry	Newry	Nt'Ards	Omagh	Total
2008	1	77	26	65	86	124	15	19	80	104	96	692
2008	2	107	6	96	86	126	31	13	173	126	131	895
2008	3											0
2008	4											0
2008	5											0
2008	6											0
2008	7											0
2008	8											0
2008	9											0
2008	10											0
2008	11											0
2008	12											0
<b>Total</b>		184	32	161	172	250	46	32	253	230	227	1587

**Tuberculosis: number of reactor animals by month and by DVO 2007**

2007	DVO_CODE											Total
Year	Month	Armagh	Ballymena	Coleraine	Dungannon	Enniskillen	Larne	L'Derry	Newry	Nt'Ards	Omagh	Total
2007	1	36	16	93	162	79	45	0	107	120	41	699
2007	2	82	14	67	83	114	29	11	122	92	50	664
2007	3	36	23	96	77	141	15	5	265	142	47	847
2007	4	71	24	20	76	45	60	5	175	76	48	600
2007	5	40	17	17	49	49	1	1	133	91	32	430
2007	6	30	2	12	72	78	12	0	74	74	32	386
2007	7	67	6	9	10	60	5	3	127	87	32	406
2007	8	137	31	39	42	102	26	3	127	98	34	639
2007	9	39	5	18	64	119	6	1	137	95	34	518
2007	10	41	8	6	18	96	2	4	150	151	54	530
2007	11	45	19	90	82	139	9	8	140	209	104	845
2007	12	42	38	67	69	87	44	17	112	189	70	735
<b>Total</b>		666	203	534	804	1109	254	58	1669	1424	578	7299

**Tuberculosis: number of reactor animals by month and by DVO 2006**

2006	DVO_CODE											Total
Year	Month	Armagh	Ballymena	Coleraine	Dungannon	Enniskillen	Larne	L'Derry	Newry	Nt'Ards	Omagh	Total
2006	1	87	25	84	100	192	17	21	135	147	102	910
2006	2	40	23	65	73	301	32	67	282	201	36	1120
2006	3	76	25	64	159	148	51	15	131	212	80	961
2006	4	65	29	60	92	170	49	14	201	137	36	853
2006	5	52	14	25	53	87	21	11	260	131	39	693
2006	6	74	19	25	43	57	6	1	204	117	26	572
2006	7	76	9	15	47	58	44	6	123	184	63	625
2006	8	160	1	26	76	103	12	2	150	108	27	665
2006	9	69	9	38	64	135	10	5	190	93	73	686
2006	10	43	5	37	81	93	18	4	100	179	36	596
2006	11	88	14	35	111	175	19	3	108	152	72	777
2006	12	76	32	139	69	186	18	11	133	196	65	925
<b>Total</b>		906	205	613	968	1705	297	160	2017	1857	655	9383

**A TB reactor animal is defined as an animal where the manual interpretation field for a skin test is positive ('P') with the first test date being taken as the time at which the animal became a reactor. Animals with lesions at routine slaughter ('LRS') are not taken into account.**

**Month = February 2008**

Ref.		<b>Total</b>	<b>Armagh</b>	<b>Ballymena</b>	<b>Coleraine</b>	<b>Dungannon</b>	<b>Enniskillen</b>	<b>Larne</b>	<b>L'derry</b>	<b>Newry</b>	<b>Nt'ards</b>	<b>Omagh</b>
b16	<b>No. herds with any test completed in month</b>	<b>3918</b>	<b>372</b>	<b>258</b>	<b>398</b>	<b>454</b>	<b>465</b>	<b>293</b>	<b>138</b>	<b>584</b>	<b>369</b>	<b>587</b>
b17	No. herds with any test, from start of year	7830	775	533	787	874	996	640	291	1147	660	1127
b29	All herds with any test, from start of year	8154	821	559	816	904	1016	655	303	1222	693	1165
b18	No. herds with any test, from start of year (no cattle)	324	46	26	29	30	20	15	12	75	33	38
b19	<b>No. herds with herd test completed in month</b>	<b>3419</b>	<b>330</b>	<b>196</b>	<b>318</b>	<b>384</b>	<b>423</b>	<b>253</b>	<b>128</b>	<b>540</b>	<b>335</b>	<b>512</b>
b20	No. herds with herd test, from start of year	6890	689	417	656	756	907	545	268	1050	602	1000
b30	All herds with herd test, from start of year	7209	735	442	682	786	927	560	280	1125	634	1038
b21	No. herds with herd test, from start of year (no cattle)	319	46	25	26	30	20	15	12	75	32	38
b22	No. herds with herd test during last 12 months	23753	2269	1439	2624	2873	3102	1697	885	3668	1864	3152
b31	No. herds with herd test during last 13-24 months	24366	2354	1496	2718	2946	3205	1751	942	3760	1954	3240
b23	No. herds with herd test during 2007	23642	2253	1444	2664	2881	3119	1702	858	3690	1891	3140
b24	No. herds with herd test during 2006	24301	2369	1496	2706	2944	3173	1743	933	3766	1948	3223
b39	No. herds with herd test during 2005	24820	2430	1529	2826	3031	3204	1771	904	3840	2005	3280
b32	No. herds with herd test during 2004	25349	2468	1588	2877	3127	3277	1893	960	3833	2019	3307
b28	No. herds with herd test during 2003	24651	2393	1523	2776	2991	3118	1848	926	3857	1971	3248
b25	<b>No. herds with any risk test completed</b>	<b>2920</b>	<b>421</b>	<b>165</b>	<b>249</b>	<b>302</b>	<b>387</b>	<b>186</b>	<b>61</b>	<b>478</b>	<b>308</b>	<b>363</b>
b26	<b>No. herds with herd risk test completed</b>	<b>1736</b>	<b>308</b>	<b>50</b>	<b>115</b>	<b>137</b>	<b>274</b>	<b>54</b>	<b>19</b>	<b>360</b>	<b>210</b>	<b>209</b>
b27	<b>No. herds with restricted herd test completed</b>	<b>1048</b>	<b>113</b>	<b>40</b>	<b>88</b>	<b>142</b>	<b>127</b>	<b>42</b>	<b>24</b>	<b>166</b>	<b>181</b>	<b>125</b>

**Month = February 2008**

Ref	Total	Armagh	Ballymena	Coleraine	Dungannon	Enniskillen	Larne	L'derry	Newry	Nt'ards	Omagh	
c1	<b>Total number of tests in current month</b>	<b>4432</b>	<b>453</b>	<b>272</b>	<b>465</b>	<b>530</b>	<b>490</b>	<b>334</b>	<b>158</b>	<b>643</b>	<b>438</b>	<b>649</b>
c2	Total number of tests from start of year	8909	916	582	919	1036	1065	738	329	1268	788	1268
c3	No. tests during the same time period in the previous year	8911	888	581	955	985	1099	756	296	1368	847	1136
c4	% change between years	0.0	3.1	0.2	-3.9	4.9	-3.2	-2.4	10.0	-7.9	-7.5	10.4
c5	No. tests in the previous 12 months	41873	4765	2339	4377	5054	5264	2779	1286	6836	3988	5185
c6	<b>No. animal tests in current month</b>	<b>259261</b>	<b>26152</b>	<b>16657</b>	<b>27312</b>	<b>27950</b>	<b>27581</b>	<b>20714</b>	<b>11297</b>	<b>33731</b>	<b>34910</b>	<b>32957</b>
c7	No. animal tests from start of year	522391	51052	33662	55871	56771	56455	48837	20339	66657	66365	66382
c8	No. animal tests during the same time period in the previous year	500271	46354	33410	59098	52944	52189	47139	20770	67238	60930	60199
c9	% change between years	4.2	9.2	0.7	-5.8	6.7	7.6	3.5	-2.1	-0.9	8.2	9.3
c10	No. animal tests in previous 12 months	2392678	271938	142107	272290	283112	265649	165007	75060	354957	293221	269337
c11	No. cattle eligible for TB testing	1607330	148865	112562	209560	193564	167451	131778	64936	203583	166302	208727
c12	No. cattle herds eligible for TB testing	26681	2603	1616	2978	3277	3400	1916	1052	4100	2169	3570
c13	<b>No. restricted herd tests during month</b>	<b>578</b>	<b>56</b>	<b>23</b>	<b>52</b>	<b>84</b>	<b>55</b>	<b>21</b>	<b>15</b>	<b>87</b>	<b>104</b>	<b>81</b>
c14	No. animals tested	76232	7793	2963	7644	10649	7868	2577	1361	11661	15732	7984
c15	<b>No. herd tests during month</b>	<b>3420</b>	<b>330</b>	<b>196</b>	<b>318</b>	<b>384</b>	<b>423</b>	<b>253</b>	<b>129</b>	<b>540</b>	<b>335</b>	<b>512</b>
c16	No. animals tested	256878	25750	16467	27024	27673	27476	20499	11234	33472	34623	32660
c17	<b>No. individual tests during month</b>	<b>1012</b>	<b>123</b>	<b>76</b>	<b>147</b>	<b>146</b>	<b>67</b>	<b>81</b>	<b>29</b>	<b>103</b>	<b>103</b>	<b>137</b>
c18	No. animals tested	2383	402	190	288	277	105	215	63	259	287	297
c23	<b>No. animals TB tested since start of year</b>	<b>518712</b>	<b>20779</b>	<b>33533</b>	<b>55604</b>	<b>56069</b>	<b>56190</b>	<b>48589</b>	<b>20221</b>	<b>66289</b>	<b>65912</b>	<b>66098</b>
c19	No. animals TB tested in previous 12 months	1646838	175310	113919	211925	202310	172996	138914	63314	225258	177935	207513
c24	No. animals TB tested in previous 13-24 months	1723693	181314	121223	223053	211442	182453	147474	69185	233228	186394	217366
c20	No. animals TB tested in 2007	1640552	172852	114560	215201	199652	174151	136324	62184	225462	178638	205208
c21	No. animals TB tested in 2006	1711870	182776	120699	220008	210854	182488	144582	69516	234093	185689	215645
c26	No. animals TB tested in 2005	1776064	183292	125632	237269	222514	184630	151248	66659	234585	191843	226983
c25	No. animals TB tested in 2004	1865762	185178	134129	249856	240990	198531	162067	76106	239332	202259	238461
c22	No. animals TB tested in 2003	1705166	164849	122113	231782	204696	173906	148198	69886	226710	187427	215451

## Explanatory Comments for Tuberculosis Statistics - B. Testing Herds

B16	No. herds with any test completed in month	Test of any disease status and size (herd or animal-level). Tests with no animals are excluded.
B17	No. herds with any test, from start of year	<b>Test of any disease status and size (herd or animal-level) carried out on a herd since 1st January. Tests with no animals are excluded.</b>
B29	All herds with any test, from start of year	Skin test of any disease status and size (herd or animal-level) carried out on a herd since 1st January. Tests with no animals are included.
B18	No. herds with any test, from start of year (no cattle)	Herd or individual test of any disease status (routine, risk or restricted) where no cattle were recorded at all such tests since 1st January
B19	No. herds with herd test completed in month	Herd level test of any disease status (routine, risk or restricted) completed during the above month. Tests with no animals are excluded.
B20	No. herds with herd test, from start of year	<b>Herd level test of any disease status (routine, risk or restricted) completed since 1st January. Tests with no animals are excluded.</b>
B30	All herds with herd test, from start of year	Herd level test of any disease status (routine, risk or restricted) completed since 1st January. Tests with no animals are included.
B21	No. herds with herd test, from start of year (no cattle)	Herd level test of any disease status (routine, risk or restricted) where no cattle were recorded at all such herd tests since 1st January.
B22	No. herds with herd test during last 12 months	Herd level test of any disease status (routine, risk or restricted) completed in the 12 month period from the above month. Tests with no animals are excluded.
B31	No. herds with herd test during last 13-24 months	Herd level test of any disease status (routine, risk or restricted) completed in the 13-24 months from the above month. Tests with no animals are excluded.
B39	No. herds with herd test during 2005	Herd level test of any disease status (routine, risk or restricted) completed in the calendar year 2005. Tests with no animals are excluded.
B32	No. herds with herd test during 2004	Herd level test of any disease status (routine, risk or restricted) completed in the calendar year 2004. Tests with no animals are excluded.
B28	No. herds with herd test during 2003	Herd level test of any disease status (routine, risk or restricted) completed in the calendar year 2003. Tests with no animals are excluded.
B23	No. herds with herd test during 2007	Herd level test of any disease status (routine, risk or restricted) completed in the calendar year 2007. Tests with no animals are excluded.
B24	No. herds with herd test during 2006	Herd level test of any disease status (routine, risk or restricted) completed in the calendar year 2006. Tests with no animals are excluded.
B25	No. herds with any risk test completed	Herd has had a herd or individual level risk test since start of calendar year and number tested > 0
B26	No. herds with herd risk test completed	Herd has had a herd level risk test since start of calendar year and number tested > 0.
B27	No. herds with restricted herd test completed	Herd has had a restricted herd test (RHT, RH1, RH2) since start of calendar year and number tested

### Explanatory Comments for Tuberculosis Statistics - C. Testing Animals

Ref	Data Title	Explanation
C1	Total number of tests in current month	Number of herds and individual tests performed in the month stated above. Tests with no animals are excluded
C2	Total number of tests from start of year	<b>From 1st January. Tests with no animals are excluded.</b>
C3	No. tests during the same time period in the previous year	From 1st January of previous year. Tests with no animals are excluded.
C4	% change between years	<b>Difference between the number of tests carried out during the current year and the number carried out in the previous expressed as a percentage.</b>
C5	No. tests in the previous 12 months	Last 12 month period from the above month. Tests with no animals are excluded.
C6	No. animal tests in current month	Animal test = a count of the number of animals tested within each herd or individual test. Some animals may have been tested multiple times during the year.
C7	No. animal tests from start of year	Number of animal tests carried out since 1st January.
C8	No. animal tests during the same time period in the previous year	Number of animal tests carried out from 1st January in the previous year over the same time interval as recorded for the current year.
C9	% change between years	Difference between the number of animal tests during the current year and the number carried out in the previous expressed as a percentage.
C10	No. animal tests in previous 12 months	Last 12 month period from the above month.
C11	No. cattle eligible for TB testing	Based on the average number of animals presented at TB herd tests over last 4 years.
C12	No. cattle herds eligible for TB testing	Based on cattle being presented for a TB herd tests over last 4 years. Herds with '0' cattle are excluded.
C13	No. restricted herd tests during month	All restricted herd tests (RHT, RH1 and RH2) carried out during the above month.
C14	No. animals tested	Total of the animals reported as being tested within restricted herd tests (RHT, RH1, RH2) during the above month.
C15	No. herd tests during month	Total of the animals reported as being tested within all herd tests during the above month.
C16	No. animals tested	Total of the animals reported as being tested within all herd tests during the above month.
C17	No. individual tests during month	Total of the animals reported as being tested within all individual tests during the above month.
C18	No. animals tested	Total of the animals reported as being tested within all individual tests during the above month.
C23	No. animals TB tested since start of year	Animals identified as having had at least one TB skin test since the start of the calendar year. Due to the same animals being sampled in different DVO areas, the 'Total' is not the sum of the DVO figures.
C19	No. animals TB tested in previous 12 months	Animals identified as having had at least one TB skin test during the last 12 month period from the above month. Due to the same animals being sampled in different DVO areas, the 'Total' is not the sum of the DVO figures.
C24	No. animals TB tested in previous 13-24 months	Animals identified as having had at least one TB skin test during the last 13-24 months from the above month. Due to the same animals being sampled in different DVO areas, the 'Total' is not the sum of the DVO figures.
C26	No. animals TB tested in 2005	Animals identified as having had at least one TB skin test during the 2005 calendar year. Due to the same animals being sampled in different DVO areas, the 'Total' is not the sum of the DVO figures.
C25	No. animals TB tested in 2004	Animals identified as having had at least one TB skin test during the 2004 calendar year. Due to the same animals being sampled in different DVO areas, the 'Total' is not the sum of the DVO figures.
C22	No. animals TB tested in 2003	Animals identified as having had at least one TB skin test during the 2003 calendar year. Due to the same animals being sampled in different DVO areas, the 'Total' is not the sum of the DVO figures.
C20	No. animals TB tested in 2007	Animals identified as having had at least one TB skin test during the 2007 calendar year. Due to the same animals being sampled in different DVO areas, the 'Total' is not the sum of the DVO figures.
C21	No. animals TB tested in 2006	Animals identified as having had at least one TB skin test during the 2006 calendar year. Due to the same animals being sampled in different DVO areas, the 'Total' is not the sum of the DVO figures.

**Explanatory Comments for Tuberculosis Statistics - D. Results**

Ref	Data Title	Explanation
D1	No. of herds with TB reactors during month	A herd is included in this figure if the herd number had a TB skin test reactor during the above month.
D2	No. of new reactor herds during month	A herd is defined as being a TB reactor herd if it had at least one TB reactor animal in that month and no TB reactor animals during the previous 12 months.
D3	No. of new reactor herds since start of year	= Since 1st January
D4	No. of new reactor herds in the previous 12 months	Last 12 month period from the above month.
D26	No. of new reactor herds in previous 13-24 months	Last 13-24 month period from the above month.
D5	No. of TB reactor animals during month	A TB reactor animal is defined as an animal where the manual interpretation field for a skin test is positive ('P') with the first test date being taken as the time at which the animal became a reactor. Currently animals with lesions at routine slaughter (*LRS*) are not taken into account
D6	No. of TB reactor animals since start of year	= Since 1st January
D7	No. of reactor animals in the previous 12 months	Last 12 month period from the above month.
D27	No. of reactor animals in previous 13-24 months	Last 13-24 month period from the above month.
D8	Herd Prevalence (%)	Number of herds with a TB reactor during the above month as a proportion of cattle herds which have presented cattle for a TB herd test during the same time period.
D20	Cumulative herd incidence in year (%)	Number of NEW reactor herds since the start of the calendar year as a proportion of cattle herds which have presented cattle for a TB herd test during the same time period.
D9	Annual herd incidence over the last 12 months (%)	Number of NEW reactor herds during the last 12 months as a proportion of cattle herds which have presented cattle for a TB herd test during the same time period.
D28	Annual herd incidence over the last 13-24 months (%)	Number of NEW reactor herds during the last 13-24 months as a proportion of cattle herds which have presented cattle for a TB herd test during the same time period.
D38	2005 Herd Incidence (%)	Number of NEW reactor herds during 2005 as a proportion of cattle herds which have presented cattle for a TB herd test during the same time period.
D30	2004 Herd Incidence (%)	Number of NEW reactor herds during 2004 as a proportion of cattle herds which have presented cattle for a TB herd test during the same time period.
D16	2003 Herd Incidence (%)	Number of NEW reactor herds during 2003 as a proportion of cattle herds which have presented cattle for a TB herd test during the same time period.
D10	2007 Herd Incidence (%)	Number of NEW reactor herds during 2007 as proportion of cattle herds which have presented cattle for a TB herd test during the same time period.
D11	2006 Herd Incidence (%)	Number of NEW reactor herds during 2006 as a proportion of cattle herds which have presented cattle for a TB herd test during the same time period.
D21	Cumulative animal incidence in year (%)	Number of reactor animals during the above month as a proportion of cattle which have been presented for a TB test during the same time period.
D12	Annual animal incidence over the last 12 months (%)	Number of reactor animals during the last 12 months as a proportion of cattle which have been presented for a TB test during the same time period.
D29	Annual animal incidence over the last 13-24 months (%)	Number of reactor animals during the last 13-24 months as a proportion of cattle which have been presented for a TB test during the same time period.
D39	2005 Animal Incidence (%)	Number of reactor animals during 2005 as a proportion of cattle which have been presented for a TB herd test during the same time period.
D31	2004 Animal Incidence (%)	Number of reactor animals during 2004 as a proportion of cattle which have been presented for a TB herd test during the same time period.
D15	2003 Animal Incidence (%)	Number of reactor animals during 2003 as a proportion of cattle which have been presented for a TB herd test during the same time period.
D13	2007 Animal Incidence (%)	Number of reactor animals during 2007 as a proportion of cattle which have been presented for a TB herd test during the same time period.
D14	2006 Animal Incidence (%)	Number of reactor animals during 2006 as a proportion of cattle which have been presented for a TB herd test during the same time period.

D34	APT during current month	= The reactor disclosure rate per 1,000 animal tests current calendar month.
D22	APT since start of year	The reactor disclosure rate per 1,000 animal tests since the start of the calendar year.
D17	Current 12 month moving average APT	The reactor disclosure rate per 1,000 animal tests. Current refers to the rate over the last 12 months.
D42	2006 APT	The reactor disclosure rate per 1,000 animal tests during the calendar year.
D40	2005 APT	The reactor disclosure rate per 1,000 animal tests during the calendar year.
D32	2004 APT	The reactor disclosure rate per 1,000 animal tests during the calendar year.
D18	2003 APT	The reactor disclosure rate per 1,000 animal tests during the calendar year.
D19	2007 APT	The reactor disclosure rate per 1,000 animal tests during the calendar year.
D23	No. negative in contacts since start of year	Number of animals taken as negative in contacts since the start of the year
D43	No. negative in contacts during 2006	The reactor disclosure rate per 1,000 animal tests during 2006.
D41	No. negative in contacts during 2005	Number of animals taken as negative in contacts during 2005
D33	No. negative in contacts during 2004	Number of animals taken as negative in contacts during 2004
D24	No. negative in contacts during 2003	Number of animals taken as negative in contacts during 2003
D25	No. negative in contacts during 2007	Number of animals taken as negative in contacts during 2007
D45	Reactor removal time 2007	Figures given are median values for working days estimated from calendar days (calendar days multiplied by 0.685). Reactors which are not yet slaughtered or where they they were first declared as reactors at slaughter are excluded.
D35	Reactor removal time 2006	Figures given are median values for working days estimated from calendar days (calendar days multiplied by 0.685). Reactors which are not yet slaughtered or where they they were first declared as reactors at slaughter are excluded.
D44	Reactor removal time 2005	Figures given are median values for working days estimated from calendar days (calendar days multiplied by 0.685). Reactors which are not yet slaughtered or where they they were first declared as reactors at slaughter are excluded.
D36	Reactor removal time 2004	Figures given are median values for working days estimated from calendar days (calendar days multiplied by 0.685). Reactors which are not yet slaughtered or where they they were first declared as reactors at slaughter are excluded.
D37	Reactor removal time 2003	Figures given are median values for working days estimated from calendar days (calendar days multiplied by 0.685). Reactors which are not yet slaughtered or where they they were first declared as reactors at slaughter are excluded.