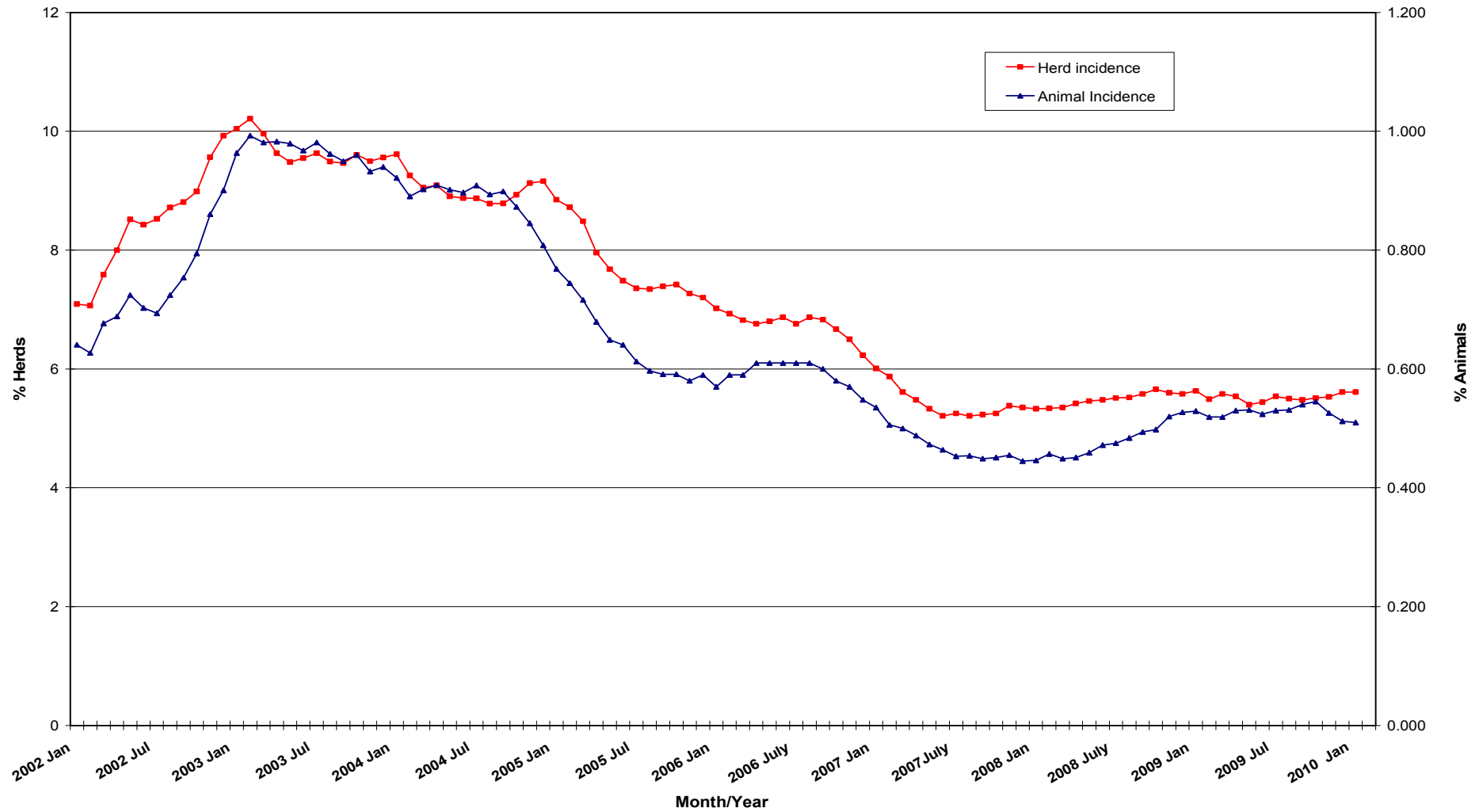
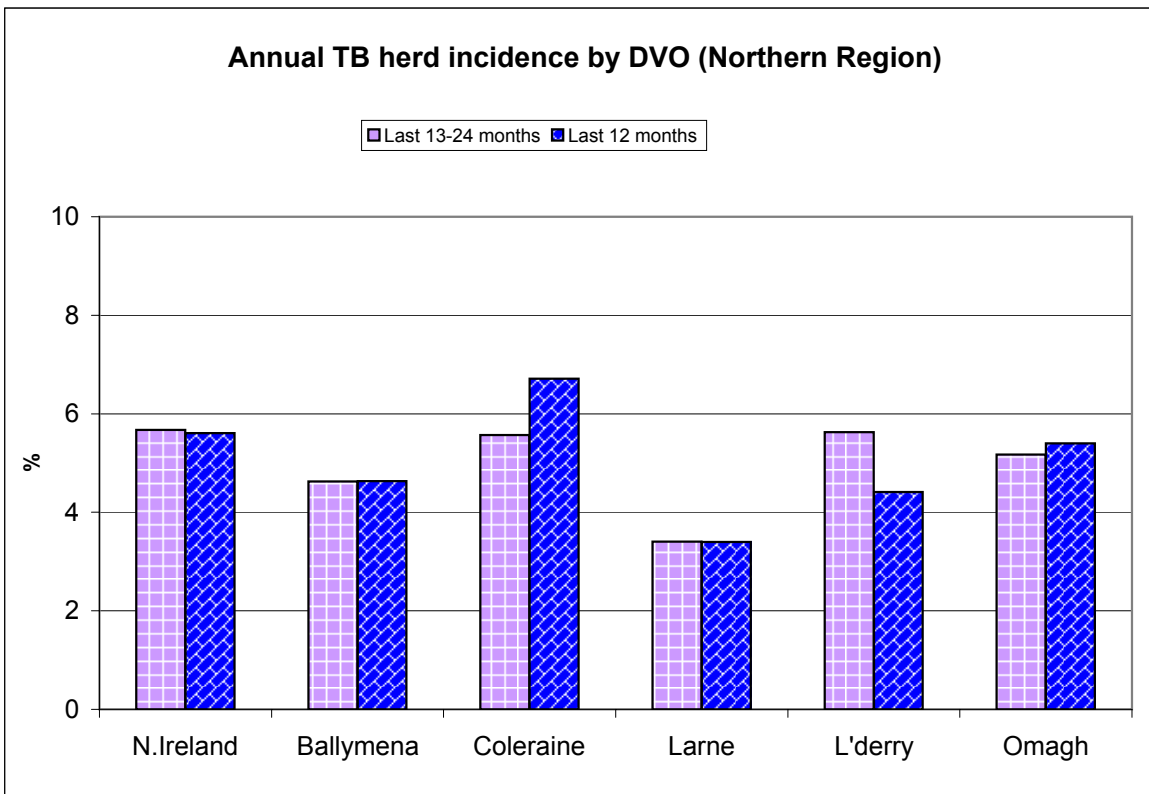
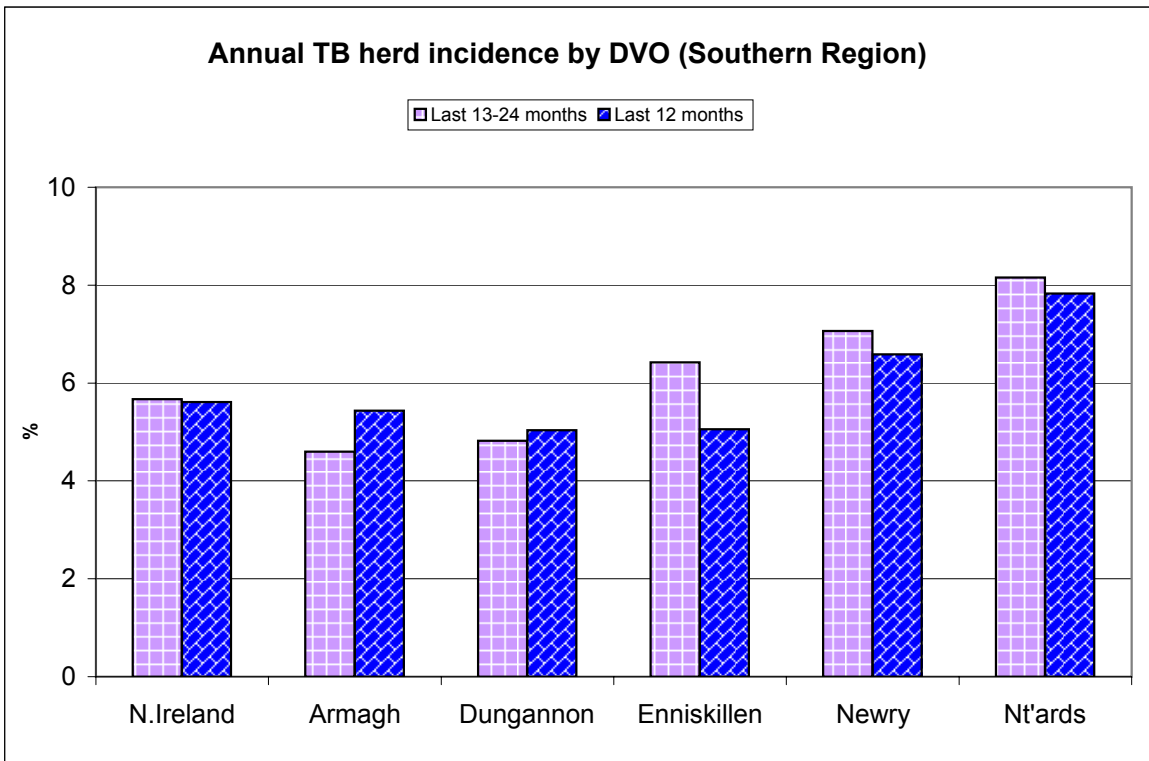


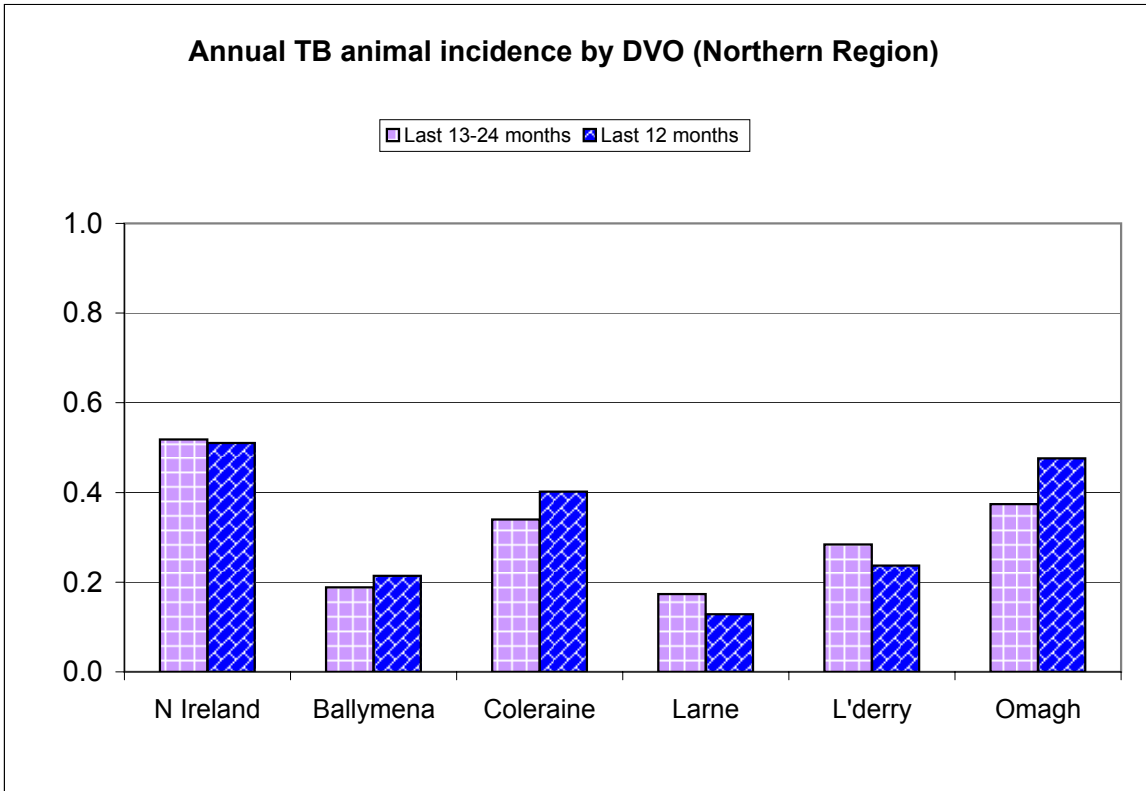
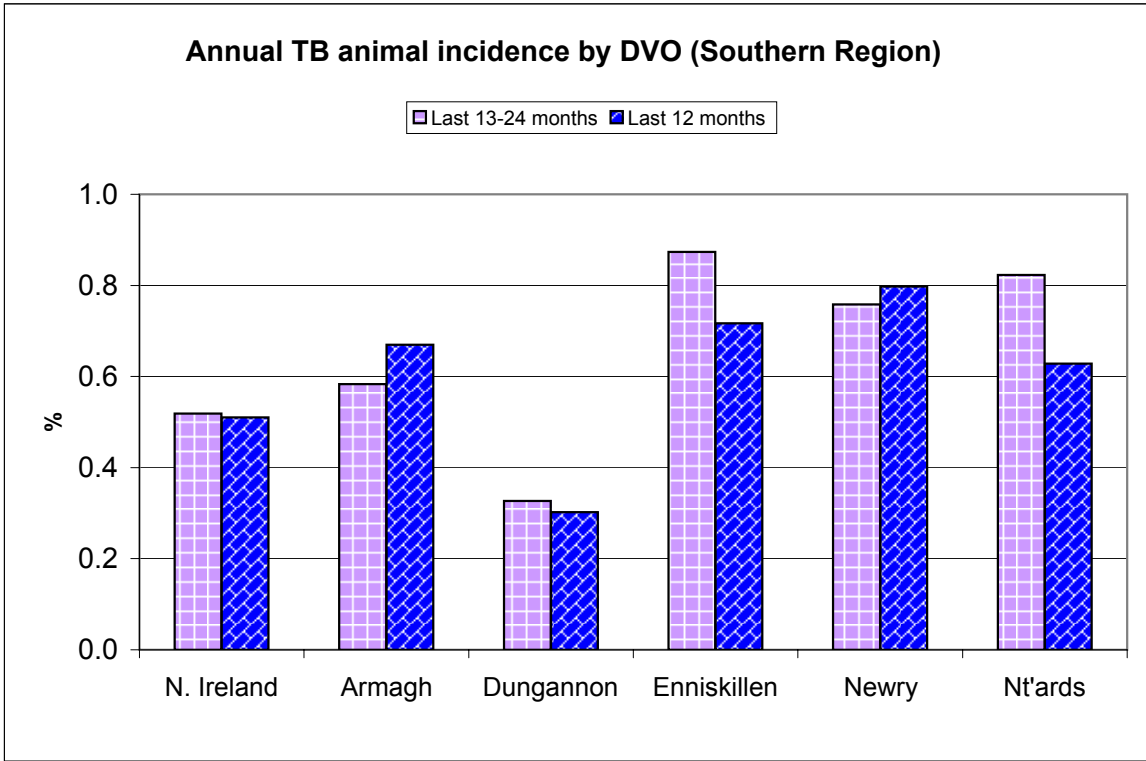
**Tuberculosis: Statistics for January 2010**

<b>Tests Completed</b>	<ul style="list-style-type: none"> <li>Herds</li> <li>Animals</li> </ul>	<ul style="list-style-type: none"> <li><a href="#">Number of herds tested (any test), by DVO</a></li> <li><a href="#">Number of herds with herd-level test, by DVO</a></li> <li><a href="#">Number of herds with any risk test, by DVO</a></li> <li><a href="#">Number of herds with herd-level risk test, by DVO</a></li> <li><a href="#">Number of herds with herd-level restricted test, by DVO</a></li> </ul>	<ul style="list-style-type: none"> <li><a href="#">Cumulative Statistics</a></li> <li><a href="#">Cumulative Statistics</a></li> </ul>	
		<ul style="list-style-type: none"> <li><a href="#">Total number of tests performed, by DVO</a></li> <li><a href="#">Total number of animals tests, by DVO</a></li> <li><a href="#">Total number of restricted herd tests, by DVO</a></li> <li><a href="#">Total number of herd tests, by DVO</a></li> <li><a href="#">Total number of individual tests, by DVO</a></li> <li><a href="#">Total number of animals tested, by DVO</a></li> </ul>	<ul style="list-style-type: none"> <li><a href="#">Cumulative Statistics</a></li> <li><a href="#">Cumulative Statistics</a></li> <li><a href="#">Number of animals tested</a></li> <li><a href="#">Number of animals tested</a></li> <li><a href="#">Number of animals tested</a></li> </ul>	
<b>Summary Statistics</b>		<ul style="list-style-type: none"> <li><a href="#">Herds with TB reactors during month, by DVO</a></li> <li><a href="#">Number of new reactor herds, by DVO</a></li> <li><a href="#">Number of new reactor animals, by DVO</a></li> <li><a href="#">Herd Prevalance</a></li> <li><a href="#">Herd Incidence</a></li> <li><a href="#">Animal Incidence</a></li> <li><a href="#">Number of reactor animals by month and by DVO</a></li> <li><a href="#">Number of new reactor herds by month and by DVO</a></li> <li><a href="#">Total number of all reactor herds by DVO</a></li> </ul>	<ul style="list-style-type: none"> <li><a href="#">Cumulative Statistics</a></li> <li><a href="#">Cumulative Statistics</a></li> </ul>	<ul style="list-style-type: none"> <li><a href="#">APT</a></li> <li><a href="#">Negative-in-contacts</a></li> <li><a href="#">Reactor removal times</a></li> </ul>
		<ul style="list-style-type: none"> <li><a href="#">Current Animal Incidence Chart</a></li> <li><a href="#">Yearly Animal Incidence Chart</a></li> <li><a href="#">Current Herd Incidence Chart</a></li> <li><a href="#">Yearly Herd Incidence Chart</a></li> </ul>	<ul style="list-style-type: none"> <li><a href="#">Monthly TB reactors chart</a></li> <li><a href="#">New TB reactor herds</a></li> <li><a href="#">TB Herd &amp; Animal Incidence</a></li> </ul>	<ul style="list-style-type: none"> <li><a href="#">Yearly Confirmed Herd Prevalence</a></li> <li><a href="#">Current Confirmed Herd Prevalence</a></li> </ul>
<b>Summary Charts</b>				

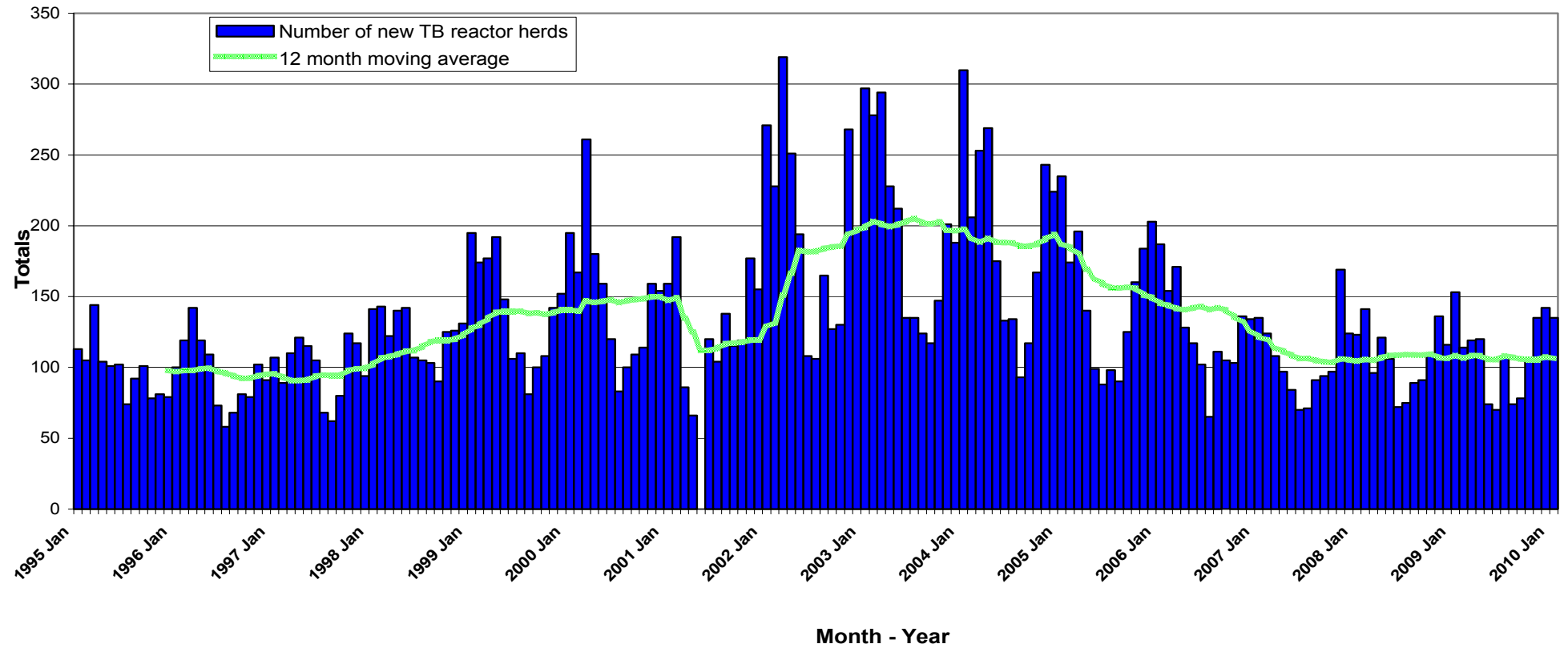
**TB Herd and Animal Incidence:**  
(12 month moving average: January 2002 to January 2010)



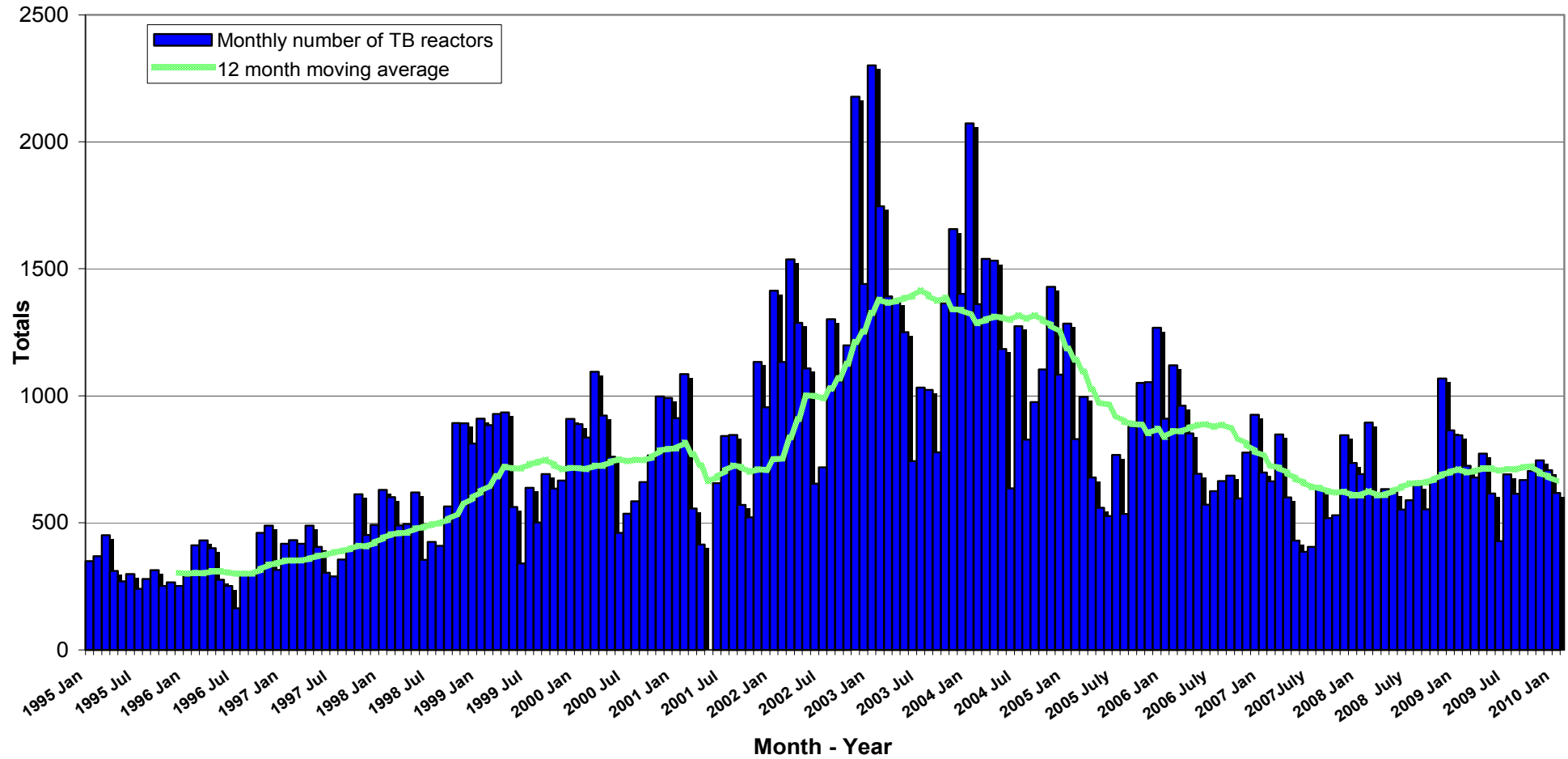


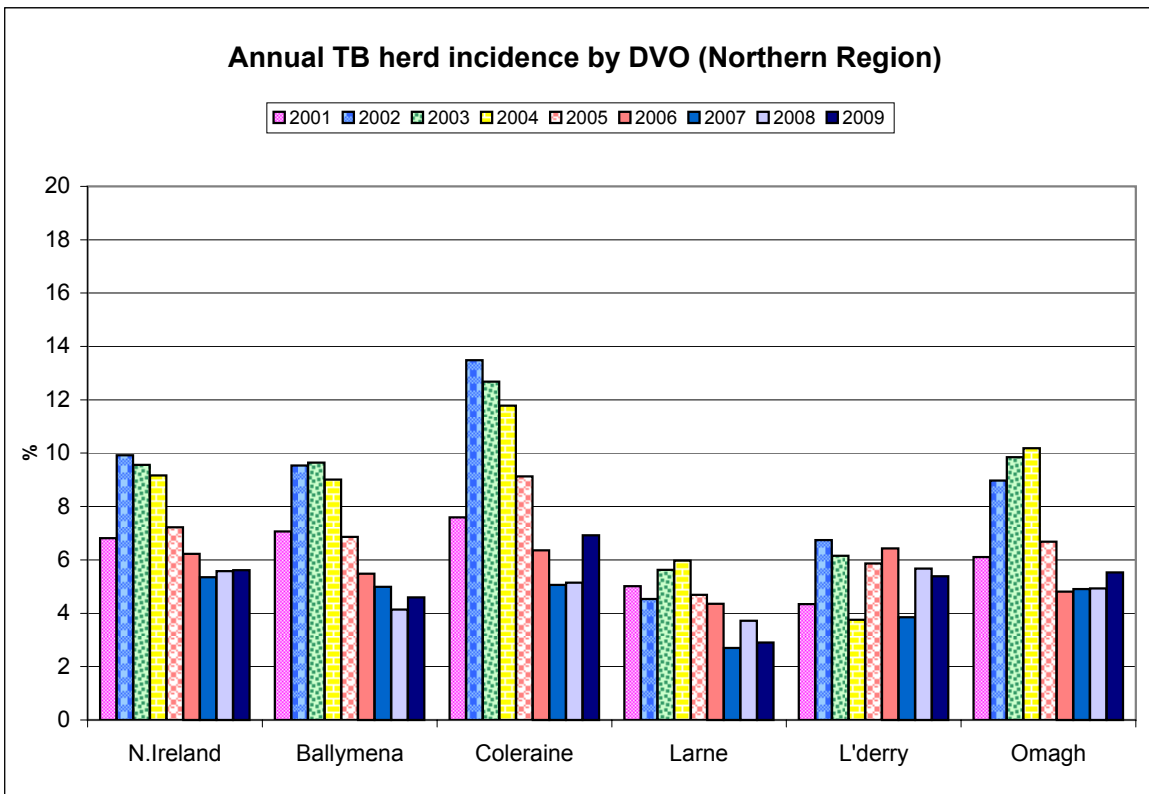
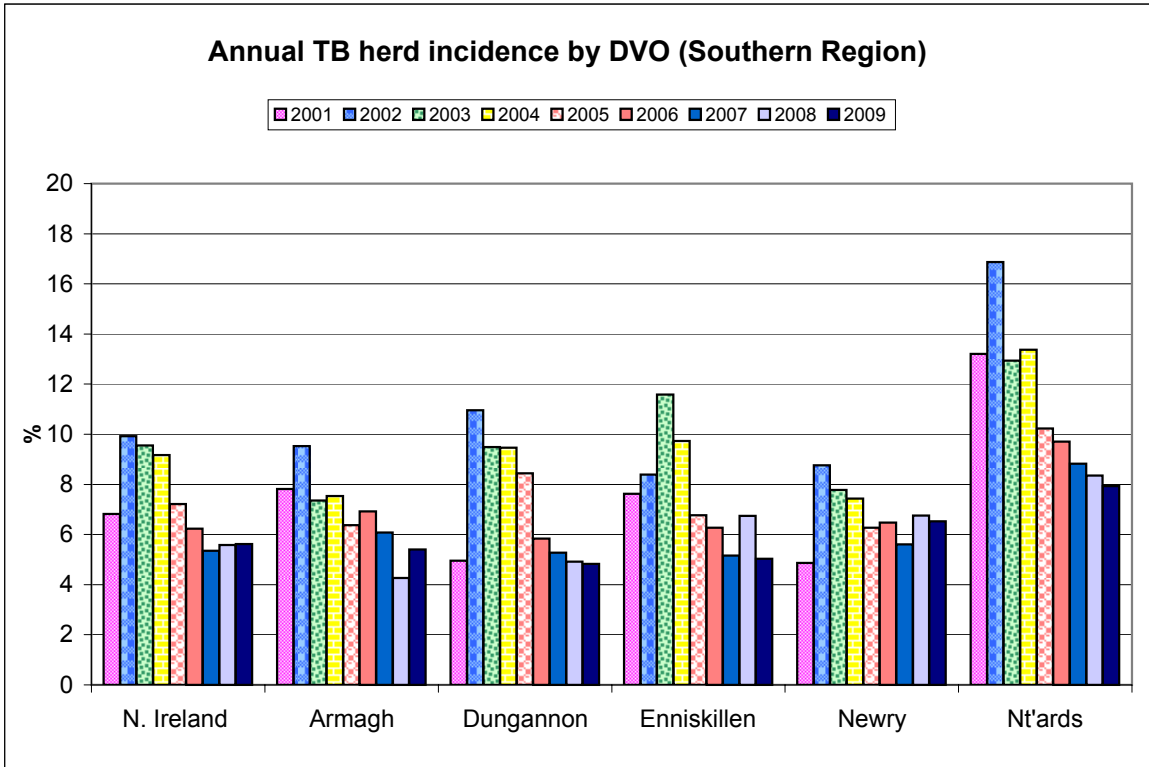


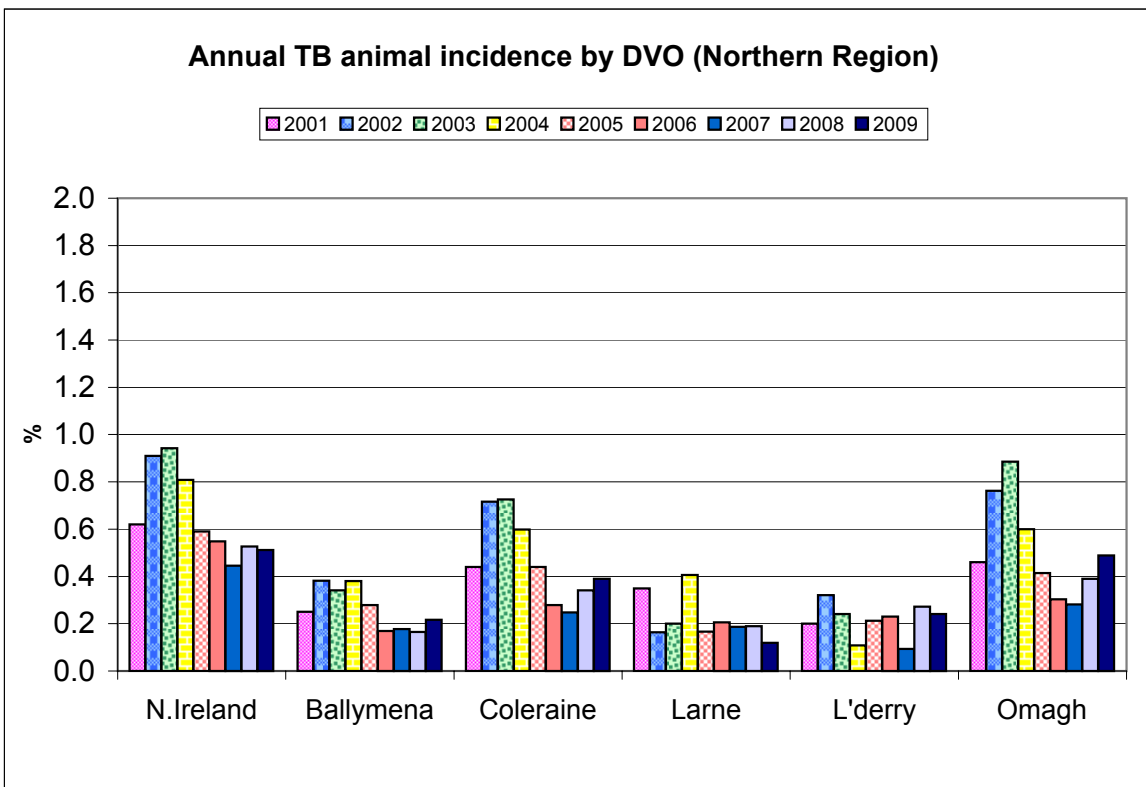
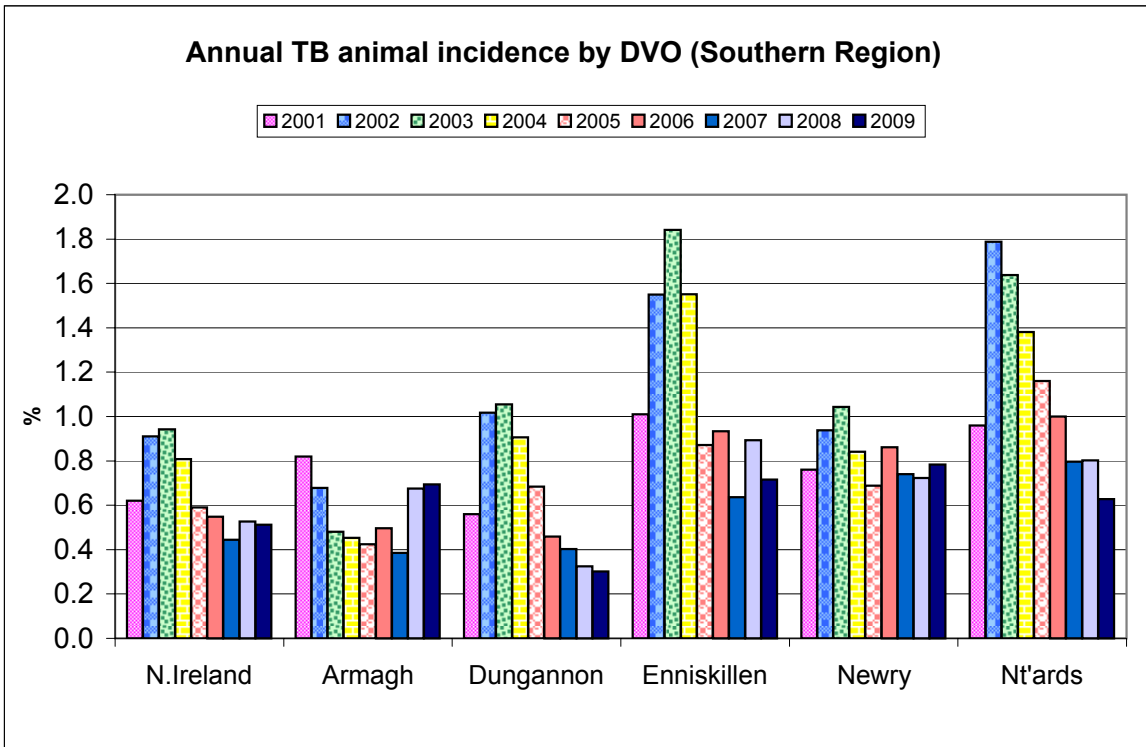
New TB Reactor Herds: January 1995 to January 2010

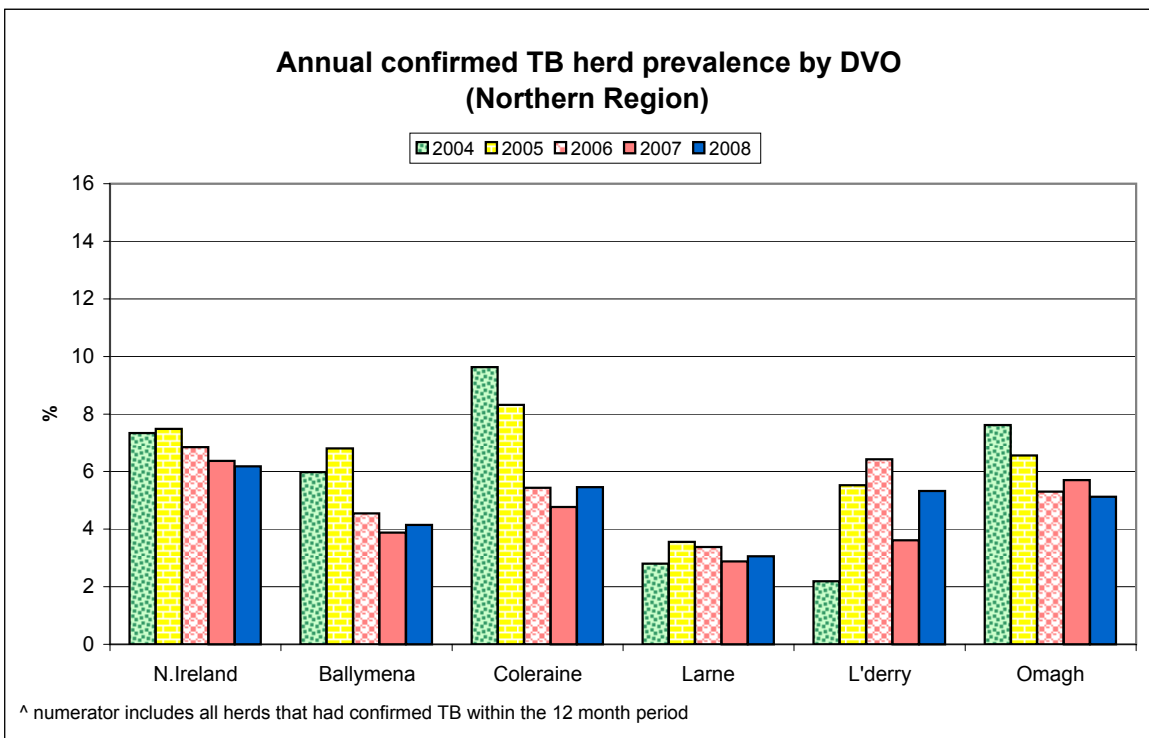
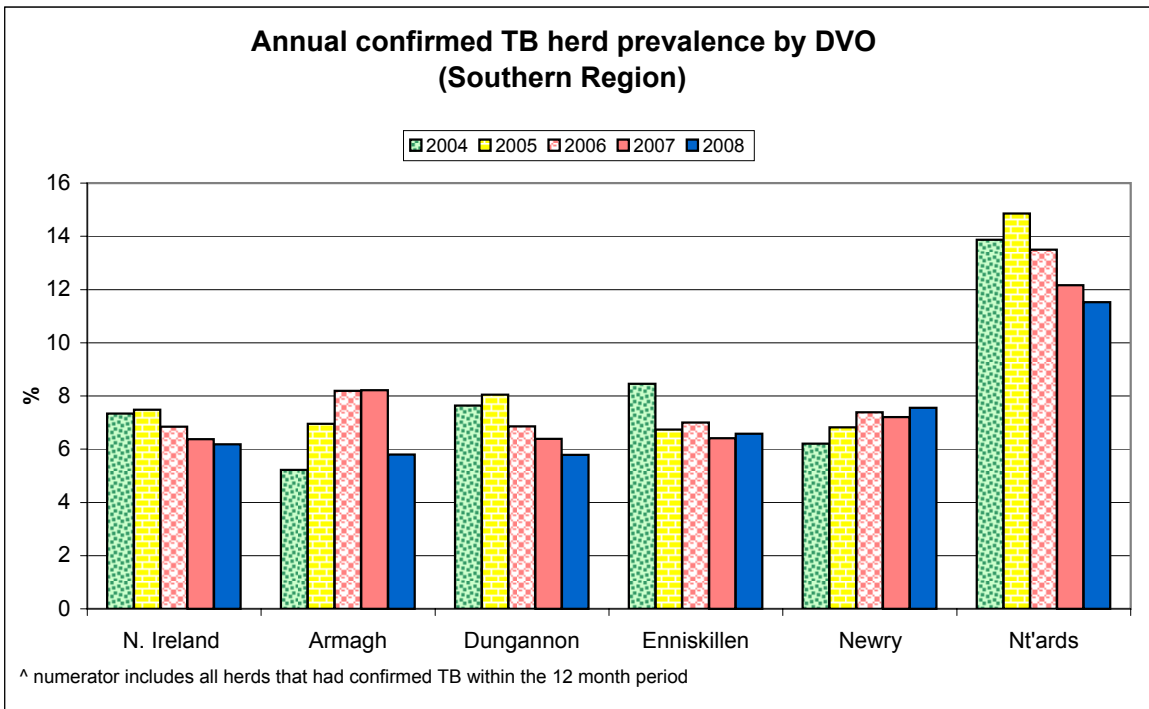


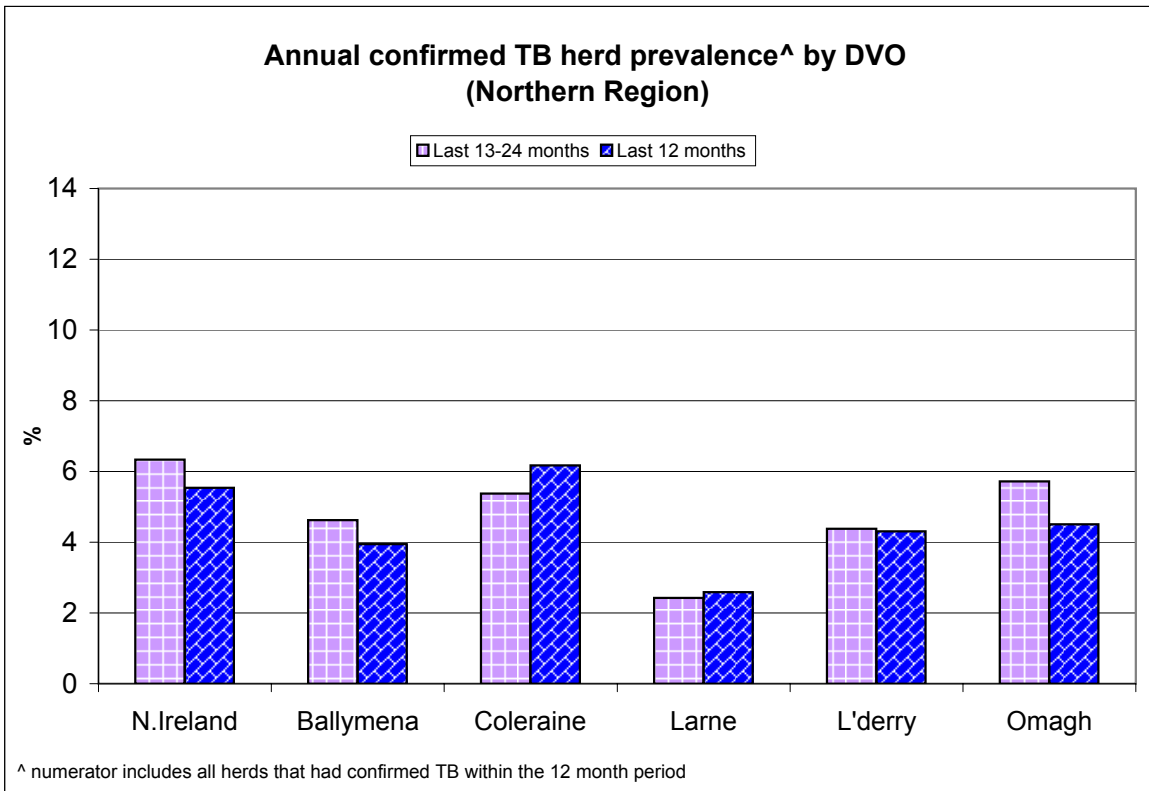
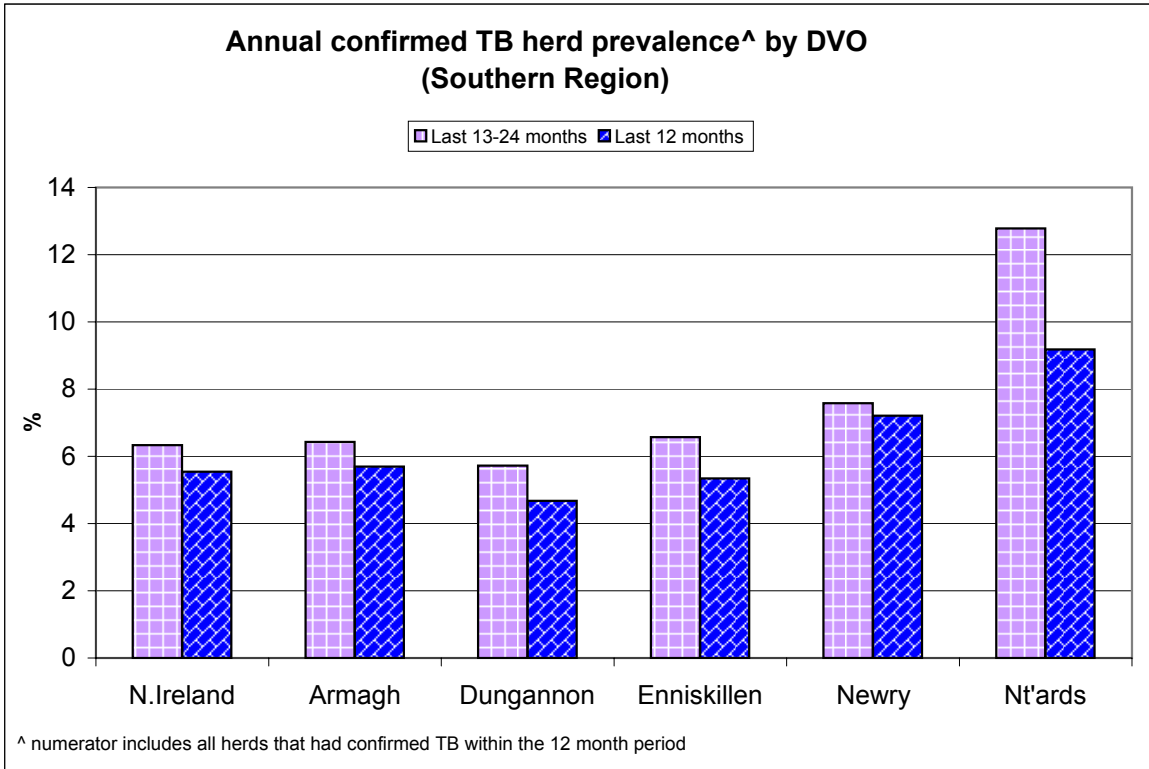
TB Reactors: January 1995 to January 2010

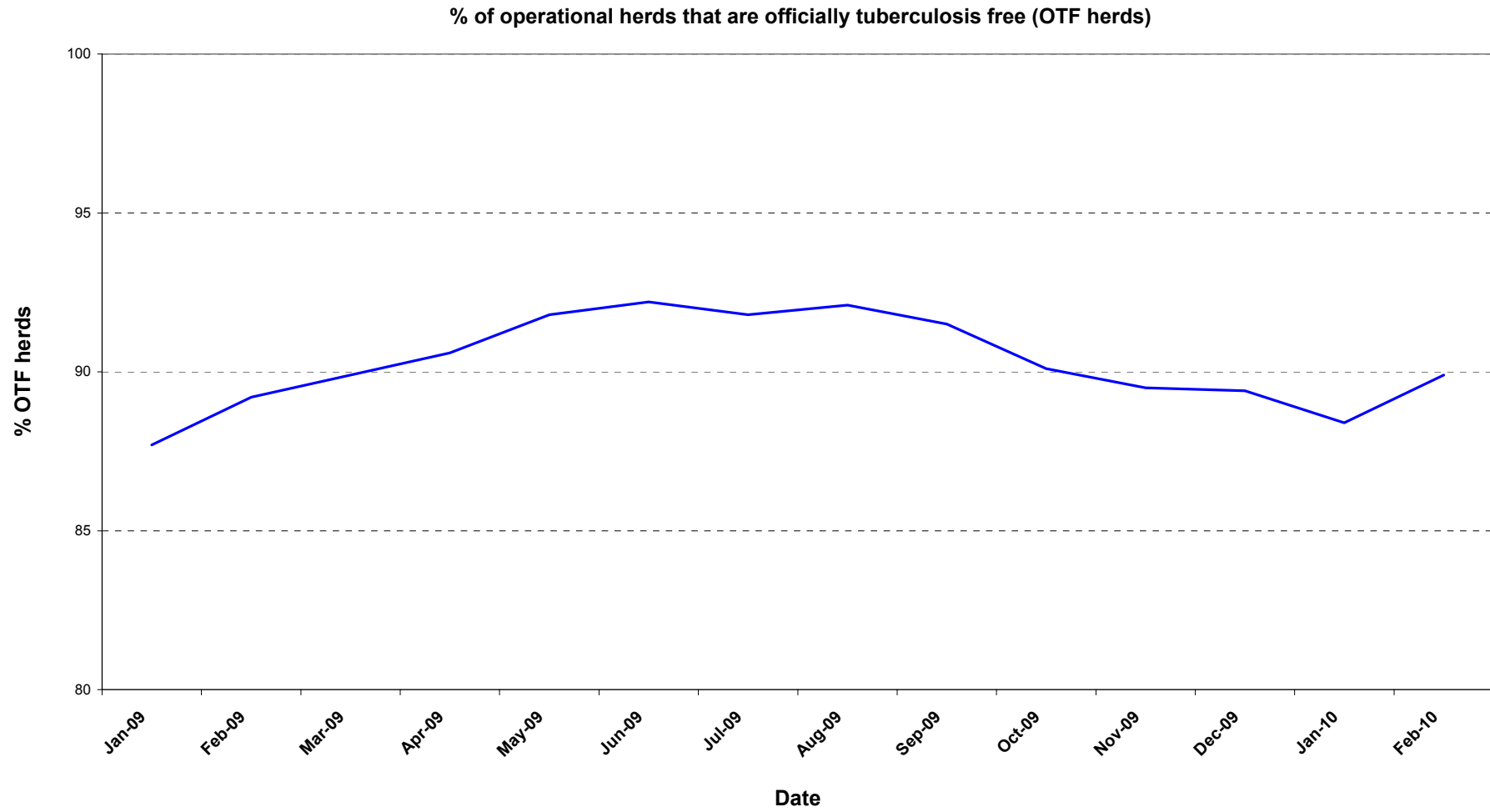












**Month = January 2010**

Ref.	Total	Armagh	Ballymena	Coleraine	Dungannon	Enniskillen	Larne	L'derry	Newry	Nt'ards	Omagh	
d1	<b>No. of herds with TB reactors during month</b>	<b>200</b>	<b>12</b>	<b>12</b>	<b>28</b>	<b>26</b>	<b>24</b>	<b>14</b>	<b>7</b>	<b>37</b>	<b>20</b>	<b>20</b>
d2	<b>No. of new reactor herds during month</b>	<b>127</b>	<b>7</b>	<b>9</b>	<b>19</b>	<b>14</b>	<b>16</b>	<b>13</b>	<b>5</b>	<b>20</b>	<b>10</b>	<b>14</b>
d3	No. of new reactor herds since start of year	127	7	9	19	14	16	13	5	20	10	14
d4	No. of new reactor herds in the previous 12 months	1278	120	63	168	140	154	56	37	238	140	162
d26	No. of new reactor herds in the previous 13-24 months	1312	102	65	144	137	196	57	49	256	148	158
d5	<b>No. of TB reactor animals during month</b>	<b>617</b>	<b>19</b>	<b>29</b>	<b>113</b>	<b>54</b>	<b>67</b>	<b>19</b>	<b>22</b>	<b>151</b>	<b>47</b>	<b>96</b>
d6	No. of TB reactor animals since start of year	617	19	29	113	54	67	19	22	151	47	96
d7	No. of reactor animals in the previous 12 months	8108	1135	235	843	592	1160	172	143	1813	1057	958
d27	No. of reactor animals in the previous 13-24 months	8373	998	209	713	645	1473	234	180	1718	1423	780
d8	<b>Herd Prevalence (%)</b>	<b>5.61</b>	3.74	4.98	7.47	6.53	5.50	4.28	4.73	6.27	7.22	4.42
d20	<b>Cumulative herd incidence in year (%)</b>	<b>3.56</b>	0.32	0.66	0.76	0.50	0.53	0.79	0.60	0.55	0.56	0.47
d9	<b>Annual herd incidence over the last 12 months (%)</b>	<b>5.61</b>	5.43	4.64	6.71	5.04	5.06	3.40	4.41	6.59	7.83	5.40
d28	<b>Annual herd incidence over the last 13-24 months (%)</b>	<b>5.67</b>	4.60	4.63	5.57	4.82	6.42	3.41	5.63	7.07	8.16	5.17
d30	<b>2009 Herd Incidence (%)</b>	<b>5.61</b>	5.40	4.59	6.92	4.83	5.04	2.90	5.39	6.52	7.93	5.53
d16	<b>2008 Herd Incidence (%)</b>	<b>5.57</b>	4.27	4.14	5.14	4.92	6.74	3.72	5.68	6.75	8.35	4.93
d10	<b>2007 Herd Incidence (%)</b>	<b>5.35</b>	6.08	4.99	5.07	5.28	5.16	2.70	3.85	5.61	8.83	4.90
d11	<b>2006 Herd Incidence (%)</b>	<b>6.23</b>	6.92	5.48	6.36	5.84	6.27	4.36	6.43	6.48	9.70	4.81
d38	<b>2005 Herd Incidence (%)</b>	<b>7.22</b>	6.38	6.87	9.13	8.45	6.77	4.69	5.86	6.28	10.22	6.68
d21	<b>Cumulative animal incidence in year (%)</b>	<b>0.231</b>	0.077	0.144	0.318	0.185	0.268	0.066	0.237	0.419	0.162	0.323
d12	<b>Annual animal incidence over the last 12 months (%)</b>	<b>0.510</b>	0.670	0.214	0.402	0.302	0.717	0.128	0.237	0.797	0.628	0.476
d29	<b>Annual animal incidence over the last 13-24 months (%)</b>	<b>0.518</b>	0.583	0.189	0.340	0.327	0.873	0.174	0.284	0.758	0.823	0.374
d31	<b>2009 Animal Incidence (%)</b>	<b>0.512</b>	0.694	0.217	0.390	0.301	0.716	0.120	0.241	0.784	0.628	0.488
d15	<b>2008 Animal Incidence (%)</b>	<b>0.527</b>	0.675	0.165	0.342	0.325	0.894	0.190	0.272	0.723	0.802	0.390

d13	<b>2007 Animal Incidence (%)</b>	<b>0.445</b>	0.385	0.177	0.248	0.403	0.637	0.186	0.093	0.740	0.797	0.282
d14	<b>2006 Animal Incidence (%)</b>	<b>0.548</b>	0.496	0.170	0.279	0.459	0.934	0.205	0.230	0.862	1.000	0.304
d39	<b>2005 Animal Incidence (%)</b>	<b>0.590</b>	0.424	0.279	0.440	0.684	0.871	0.167	0.213	0.688	1.160	0.415
d34	<b>APT during current month</b>	<b>2.29</b>	0.76	1.44	3.17	1.83	2.67	0.66	2.37	4.18	1.60	3.22
d22	<b>APT since start of year</b>	<b>2.29</b>	0.76	1.44	3.17	1.83	2.67	0.66	2.37	4.18	1.60	3.22
d17	<b>Current 12 month moving average APT</b>	<b>3.43</b>	4.39	1.67	2.91	2.28	4.69	1.09	1.87	4.60	4.04	3.48
d32	<b>2009 APT</b>	<b>3.41</b>	4.49	1.68	2.82	2.25	4.63	1.01	1.89	4.46	4.05	3.55
d18	<b>2008 APT</b>	<b>3.54</b>	4.51	1.34	2.65	2.38	5.69	1.60	2.09	4.36	4.80	2.78
d19	<b>2007 APT</b>	<b>3.08</b>	2.49	1.44	1.94	2.88	4.24	1.56	0.77	4.69	4.95	2.20
d42	<b>2006 APT</b>	<b>3.49</b>	3.00	1.30	2.03	3.06	5.52	1.60	1.66	5.23	5.66	2.16
d40	<b>2005 APT</b>	<b>3.65</b>	2.58	2.01	2.86	4.28	5.44	1.25	1.67	4.08	6.28	2.73
d23	<b>No. negative in contacts since start of year</b>	<b>36</b>	0	0	4	0	3	0	0	0	0	29
d46	<b>No. negative in contacts over last 12 months</b>	<b>680</b>	93	1	4	152	69	9	3	124	71	154
d33	<b>No. negative in contacts during 2009</b>	<b>707</b>	96	1	1	152	75	9	3	134	111	125
d24	<b>No. negative in contacts during 2008</b>	<b>611</b>	117	0	35	6	49	12	5	94	200	93
d25	<b>No. negative in contacts during 2007</b>	<b>589</b>	38	3	15	49	59	14	1	40	248	122
d43	<b>No. negative in contacts during 2006</b>	<b>689</b>	4	1	58	122	106	2	14	83	240	59
d41	<b>No. negative in contacts during 2005</b>	<b>1208</b>	25	8	93	48	377	5	7	12	584	49
d36	<b>Reactor removal time 2009</b>	<b>11.6</b>	13.7	8.9	8.9	8.9	10.9	8.9	8.2	11.6	12.3	8.9
d37	<b>Reactor removal time 2008</b>	<b>11.6</b>	12.3	8.9	8.9	9.6	9.6	9.6	8.2	12.3	12.3	8.2
d45	<b>Reactor removal time 2007</b>	<b>12.3</b>	12.3	12.3	11.0	12.3	8.9	13.0	8.9	13.0	13.0	8.9
d35	<b>Reactor removal time 2006</b>	<b>13.0</b>	12.3	9.6	11.6	13.7	11.6	13.0	10.3	13.7	13.7	9.6
D44	<b>Reactor removal time 2005</b>	<b>13.0</b>	10.3	13.0	13.0	13.0	13.0	14.4	13.0	15.8	12.3	11.6

**Tuberculosis: number of reactor herds by month and by DVO in 2010 and unique herd breakdowns during the year**

2010		DVO_CODE										
Year	Month	Armagh	Ballymena	Coleraine	Dungannon	Enniskillen	Larne	L'Derry	Newry	Nt'Ards	Omagh	Total
2010	1	7	9	19	14	16	13	5	20	10	14	127
2010	2											0
2010	3											0
2010	4											0
2010	5											0
2010	6											0
2010	7											0
2010	8											0
2010	9											0
2010	10											0
2010	11											0
2010	12											0
Total		7	9	19	14	16	13	5	20	10	14	127

Unique Herd Breakdowns		DVO_CODE										
Year	Armagh	Ballymena	Coleraine	Dungannon	Enniskillen	Larne	L'Derry	Newry	Nt'Ards	Omagh	Total Herds	
2010	12	12	28	26	24	14	7	37	20	20	200	

**Tuberculosis: number of reactor herds by month and by DVO in 2009 and unique herd breakdowns during the year**

2009		DVO_CODE										
Year	Month	Armagh	Ballymena	Coleraine	Dungannon	Enniskillen	Larne	L'Derry	Newry	Nt'Ards	Omagh	Total
2009	1	13	14	29	15	14	7	4	28	11	19	154
2009	2	8	5	15	12	14	9	5	19	8	19	114
2009	3	15	4	18	20	9	4	2	17	16	14	119
2009	4	12	6	16	12	19	3	5	22	7	18	120
2009	5	13	2	14	6	8	1	2	8	15	5	74
2009	6	9	4	9	8	2	2	0	21	8	7	70
2009	7	12	3	8	6	19	3	3	24	17	13	108
2009	8	11	3	7	8	15	0	2	16	7	5	74
2009	9	7	2	10	15	7	1	2	15	14	5	78
2009	10	4	3	6	15	13	5	1	29	10	19	105
2009	11	9	8	17	9	18	8	6	19	17	24	135
2009	12	8	10	26	10	17	5	14	18	14	20	142
Total		121	64	175	136	155	48	46	236	144	168	1293

Unique Herd Breakdowns		DVO_CODE										
Year	Armagh	Ballymena	Coleraine	Dungannon	Enniskillen	Larne	L'Derry	Newry	Nt'Ards	Omagh	Total Herds	
2009	158	75	213	163	209	56	51	306	190	187	1608	
	102	65	144	137	196	57	49	256	148	158	1312	

**Tuberculosis: number of reactor herds by month and by DVO in 2008 and unique herd breakdowns during the year**

2008		DVO_CODE										
Year	Month	Armagh	Ballymena	Coleraine	Dungannon	Enniskillen	Larne	L'Derry	Newry	Nt'Ards	Omagh	Total
2008	1	10	6	14	16	19	9	4	17	6	22	123
2008	2	11	4	15	16	19	7	3	28	15	23	141
2008	3	6	11	5	6	15	4	5	15	14	15	96
2008	4	7	7	12	12	20	4	2	26	14	17	121
2008	5	13	6	10	10	11	3	7	23	10	13	106
2008	6	4	2	6	2	13	1	6	19	11	8	72
2008	7	7	1	4	13	7	2	2	17	13	9	75
2008	8	4	1	7	8	13	4	2	25	17	8	89
2008	9	6	2	9	14	19	4	1	18	15	3	91
2008	10	7	4	12	10	26	3	4	22	11	9	108
2008	11	14	7	21	15	20	9	9	18	11	12	136
2008	12	6	6	15	14	20	11	4	14	13	12	115
Total		95	57	130	136	202	61	49	242	150	151	1273

Unique Herd Breakdowns		DVO_CODE										
Year	Armagh	Ballymena	Coleraine	Dungannon	Enniskillen	Larne	L'Derry	Newry	Nt'Ards	Omagh	Total Herds	
2008	128	66	158	167	248	67	56	315	215	178	1598	

A herd is defined as being a TB reactor herd if it had at least one TB reactor animal in that month and no TB reactor animals during the previous 12 months.

A TB unique herd breakdown is defined as a herd which has had at least one TB reactor during the specified calendar year irrespective of any TB reactors during the previous calendar year.

**Tuberculosis: number of reactor animals by month and by DVO 2010**

2010	DVO_CODE											Total
Year	Month	Armagh	Ballymena	Coleraine	Dungannon	Enniskillen	Larne	L'Derry	Newry	Nt'Ards	Omagh	Total
2010	1	19	29	113	54	67	19	22	151	47	96	617
2010	2											0
2010	3											0
2010	4											0
2010	5											0
2010	6											0
2010	7											0
2010	8											0
2010	9											0
2010	10											0
2010	11											0
2010	12											0
<b>Total</b>		<b>19</b>	<b>29</b>	<b>113</b>	<b>54</b>	<b>67</b>	<b>19</b>	<b>22</b>	<b>151</b>	<b>47</b>	<b>96</b>	<b>617</b>

**Tuberculosis: number of reactor animals by month and by DVO 2009**

2009	DVO_CODE											Total
Year	Month	Armagh	Ballymena	Coleraine	Dungannon	Enniskillen	Larne	L'Derry	Newry	Nt'Ards	Omagh	Total
2009	1	125	47	98	80	124	9	15	194	96	58	846
2009	2	99	6	105	46	103	30	7	130	118	81	725
2009	3	133	38	67	74	66	12	5	120	105	59	679
2009	4	63	12	81	66	170	9	13	155	97	106	772
2009	5	169	10	38	30	53	2	2	106	59	147	616
2009	6	67	21	29	23	53	2	0	140	50	43	428
2009	7	130	12	41	27	129	12	49	161	90	40	691
2009	8	96	15	22	44	124	0	11	189	36	78	615
2009	9	145	7	75	62	80	2	3	177	97	21	669
2009	10	32	18	96	43	100	25	6	183	106	95	704
2009	11	57	20	78	43	91	50	10	107	156	134	746
2009	12	68	35	97	53	83	8	26	135	67	135	707
<b>Total</b>		<b>1184</b>	<b>241</b>	<b>827</b>	<b>591</b>	<b>1176</b>	<b>161</b>	<b>147</b>	<b>1797</b>	<b>1077</b>	<b>997</b>	<b>8198</b>

**Tuberculosis: number of reactor animals by month and by DVO 2008**

2008	DVO_CODE											Total
Year	Month	Armagh	Ballymena	Coleraine	Dungannon	Enniskillen	Larne	L'Derry	Newry	Nt'Ards	Omagh	Total
2008	1	77	26	65	86	124	15	19	80	104	96	692
2008	2	107	6	96	86	126	31	13	173	126	131	895
2008	3	42	38	62	42	60	9	8	99	173	84	617
2008	4	38	12	58	49	111	30	14	180	57	83	632
2008	5	49	25	38	32	79	27	10	98	192	70	620
2008	6	24	3	85	43	73	2	6	157	54	105	552
2008	7	79	3	12	48	119	10	12	114	135	57	589
2008	8	37	5	49	48	115	32	12	186	131	32	647
2008	9	87	4	22	61	140	10	3	71	144	9	551
2008	10	29	9	29	26	181	25	32	222	95	16	664
2008	11	304	31	99	44	221	34	36	144	116	39	1068
2008	12	267	14	82	66	150	26	7	105	62	84	863
<b>Total</b>		<b>1140</b>	<b>176</b>	<b>697</b>	<b>631</b>	<b>1499</b>	<b>251</b>	<b>172</b>	<b>1629</b>	<b>1389</b>	<b>806</b>	<b>8390</b>

**A TB reactor animal is defined as an animal where the manual interpretation field for a skin test is positive ('P') with the first test date being taken as the time at which the animal became a reactor.**

**Animals with lesions at routine slaughter ('LRS') are not taken into account.**

**Month = January 2010**

Ref.		<b>Total</b>	<b>Armagh</b>	<b>Ballymena</b>	<b>Coleraine</b>	<b>Dungannon</b>	<b>Enniskillen</b>	<b>Larne</b>	<b>L'derry</b>	<b>Newry</b>	<b>Nt'ards</b>	<b>Omagh</b>
b16	<b>No. herds with any test completed in month</b>	<b>4198</b>	<b>395</b>	<b>280</b>	<b>492</b>	<b>480</b>	<b>488</b>	<b>389</b>	<b>180</b>	<b>642</b>	<b>316</b>	<b>536</b>
b17	No. herds with any test, from start of year	4198	395	280	492	480	488	389	180	642	316	536
b29	All herds with any test, from start of year	4351	415	287	504	493	500	402	192	667	334	557
b18	No. herds with any test, from start of year (no cattle)	153	20	7	12	13	12	13	12	25	18	21
b19	<b>No. herds with herd test completed in month</b>	<b>3565</b>	<b>321</b>	<b>241</b>	<b>375</b>	<b>398</b>	<b>436</b>	<b>327</b>	<b>148</b>	<b>590</b>	<b>277</b>	<b>452</b>
b20	No. herds with herd test, from start of year	3565	321	241	375	398	436	327	148	590	277	452
b30	All herds with herd test, from start of year	3717	341	248	387	411	447	340	160	615	295	473
b21	No. herds with herd test, from start of year (no cattle)	152	20	7	12	13	11	13	12	25	18	21
b22	No. herds with herd test during last 12 months	22785	2208	1359	2503	2779	3046	1647	839	3613	1789	3002
b31	No. herds with herd test during last 13-24 months	23140	2218	1405	2587	2843	3052	1673	871	3623	1814	3054
b32	No. herds with herd test during 2009	23031	2240	1394	2529	2814	3078	1653	854	3617	1816	3036
b28	No. herds with herd test during 2008	22835	2227	1376	2527	2767	2995	1638	863	3585	1797	3060
b23	No. herds with herd test during 2007	23642	2253	1444	2664	2881	3119	1702	858	3690	1891	3140
b24	No. herds with herd test during 2006	24301	2369	1496	2706	2944	3173	1743	933	3766	1948	3223
b39	No. herds with herd test during 2005	24820	2430	1529	2826	3031	3204	1771	904	3840	2005	3280
b25	<b>No. herds with any risk test completed</b>	<b>1778</b>	<b>216</b>	<b>85</b>	<b>214</b>	<b>173</b>	<b>202</b>	<b>102</b>	<b>59</b>	<b>380</b>	<b>153</b>	<b>194</b>
b26	<b>No. herds with herd risk test completed</b>	<b>1046</b>	<b>123</b>	<b>43</b>	<b>84</b>	<b>67</b>	<b>137</b>	<b>27</b>	<b>19</b>	<b>325</b>	<b>103</b>	<b>118</b>
b27	<b>No. herds with restricted herd test completed</b>	<b>430</b>	<b>40</b>	<b>17</b>	<b>54</b>	<b>62</b>	<b>51</b>	<b>22</b>	<b>11</b>	<b>76</b>	<b>57</b>	<b>40</b>

**Month = January 2010**

Ref	Total	Armagh	Ballymena	Coleraine	Dungannon	Enniskillen	Larne	L'derry	Newry	Nt'ards	Omagh	
c1	<b>Total number of tests in current month</b>	<b>4714</b>	<b>472</b>	<b>298</b>	<b>542</b>	<b>579</b>	<b>535</b>	<b>432</b>	<b>197</b>	<b>705</b>	<b>361</b>	<b>593</b>
c2	Total number of tests from start of year	4714	472	298	542	579	535	432	197	705	361	593
c3	No. tests during the same time period in the previous year	5512	537	375	591	665	734	471	209	844	425	661
c4	% change between years	<b>-16.9</b>	<b>-13.8</b>	<b>-25.8</b>	<b>-9.0</b>	<b>-14.9</b>	<b>-37.2</b>	<b>-9.0</b>	<b>-6.1</b>	<b>-19.7</b>	<b>-17.7</b>	<b>-11.5</b>
c5	No. tests in the previous 12 months	41919	4623	2221	4372	5051	5229	2684	1354	7457	3625	5303
c6	<b>No. animal tests in current month</b>	<b>268968</b>	<b>24990</b>	<b>20160</b>	<b>35700</b>	<b>29556</b>	<b>25074</b>	<b>28909</b>	<b>9302</b>	<b>36141</b>	<b>29290</b>	<b>29846</b>
c7	No. animal tests from start of year	268968	24990	20160	35700	29556	25074	28909	9302	36141	29290	29846
c8	No. animal tests during the same time period in the previous year	311843	29916	22518	39138	33256	31977	30210	10821	44533	33959	35515
c9	% change between years	<b>-15.9</b>	<b>-19.7</b>	<b>-11.7</b>	<b>-9.6</b>	<b>-12.5</b>	<b>-27.5</b>	<b>-4.5</b>	<b>-16.3</b>	<b>-23.2</b>	<b>-15.9</b>	<b>-19.0</b>
c10	No. animal tests in previous 12 months	2361545	258744	140786	289807	259481	247108	158117	76393	394336	261360	275413
c11	No. cattle eligible for TB testing	1612705	155218	113665	211788	187835	162602	139612	63695	208091	165216	204983
c12	No. cattle herds eligible for TB testing	26322	2580	1597	2931	3184	3364	1947	1034	4088	2107	3490
c13	<b>No. restricted herd tests during month</b>	<b>430</b>	<b>40</b>	<b>17</b>	<b>54</b>	<b>62</b>	<b>51</b>	<b>22</b>	<b>11</b>	<b>76</b>	<b>57</b>	<b>40</b>
c14	No. animals tested	62496	5868	3009	10409	9150	6217	2862	1386	9758	9215	4622
c15	<b>No. herd tests during month</b>	<b>3565</b>	<b>321</b>	<b>241</b>	<b>375</b>	<b>398</b>	<b>436</b>	<b>327</b>	<b>148</b>	<b>590</b>	<b>277</b>	<b>452</b>
c16	No. animals tested	265628	24295	20045	35228	28987	24775	28624	9215	35933	28987	29539
c17	<b>No. individual tests during month</b>	<b>1149</b>	<b>151</b>	<b>57</b>	<b>167</b>	<b>181</b>	<b>99</b>	<b>105</b>	<b>49</b>	<b>115</b>	<b>84</b>	<b>141</b>
c18	No. animals tested	3340	695	115	472	569	299	285	87	208	303	307
c23	<b>No. animals TB tested since start of year</b>	<b>267431</b>	<b>24801</b>	<b>20114</b>	<b>35506</b>	<b>29231</b>	<b>24982</b>	<b>28786</b>	<b>9265</b>	<b>36032</b>	<b>29044</b>	<b>29737</b>
c19	No. animals TB tested in previous 12 months	1588922	169421	109859	209667	195707	161838	134087	60418	227372	168268	201077
c24	No. animals TB tested in previous 13-24 months	1615091	171142	110827	209872	197401	168633	134782	63423	226543	172867	208456
c25	No. animals TB tested in 2009	1601500	170614	110939	212118	196296	164205	134507	60943	229310	171602	204195
c22	No. animals TB tested in 2008	1591976	168976	106828	203947	194163	167759	132370	63159	225200	173199	206849
c20	No. animals TB tested in 2007	1640552	172852	114560	215201	199652	174151	136324	62184	225462	178638	205208
c21	No. animals TB tested in 2006	1711870	182776	120699	220008	210854	182488	144582	69516	234093	185689	215645
c26	No. animals TB tested in 2005	1776064	183292	125632	237269	222514	184630	151248	66659	234585	191843	226983

**Month = February 2010**

Ref		<b>Total</b>	<b>Armagh</b>	<b>Ballymena</b>	<b>Coleraine</b>	<b>Dungannon</b>	<b>Enniskillen</b>	<b>Larne</b>	<b>L'derry</b>	<b>Newry</b>	<b>Nt'ards</b>	<b>Omagh</b>
f1	No. of Officially Tuberculosis Free Herds (OTF)	24041	2323	1503	2658	2956	3146	1779	935	3666	1857	3218
f2	No. of Officially Tuberculosis Suspended Herds (OTS)	1546	203	82	169	145	125	169	60	257	123	213
f3	No. of Officially Tuberculosis Withdrawn Herds (OTW)	1152	118	59	135	140	103	46	38	237	143	133
f4	% herds that are OTF	89.9	87.9	91.4	89.7	91.2	93.2	89.2	90.5	88.1	87.5	90.3
f5	% herds that are OTS	5.8	7.7	5.0	5.7	4.5	3.7	8.5	5.8	6.2	5.8	6.0
f6	% herds that are OTW	4.3	4.5	3.6	4.6	4.3	3.1	2.3	3.7	5.7	6.7	3.7

		<b>Month = September 2009</b>										
		<b>(Data lagged by 4 months)</b>										
Ref		<b>Total</b>	<b>Armagh</b>	<b>Ballymena</b>	<b>Coleraine</b>	<b>Dungannon</b>	<b>Enniskillen</b>	<b>Larne</b>	<b>L'derry</b>	<b>Newry</b>	<b>Nt'ards</b>	<b>Omagh</b>
e1	No. TB animals found at routine slaughter in current year	405	52	24	39	45	17	11	9	110	54	44
e19	No. TB animals found at routine slaughter in last 12 months	606	69	37	53	75	29	17	11	167	85	63
e20	No. TB animals found at routine slaughter in last 13-24 months	705	85	34	50	94	62	24	6	165	116	69
e6	No. TB animals found at routine slaughter in 2008	638	73	32	51	92	47	19	6	153	106	59
e2	No. TB animals found at routine slaughter in 2007	695	103	31	32	95	60	21	13	169	107	64
e3	No. TB animals found at routine slaughter in 2006	640	81	22	41	86	54	34	16	144	111	51
e4	No. TB animals found at routine slaughter in 2005	656	82	23	46	89	56	22	18	123	146	51
e5	No. TB animals found at routine slaughter in 2004	774	78	38	87	98	53	46	9	152	136	77
e7	No. herds with TB found at routine slaughter in current year	281	36	13	33	28	14	11	8	65	38	35
e21	No. herds with TB found at routine slaughter in last 12 months	411	48	19	43	50	24	16	10	96	58	47
e22	No. herds with TB found at routine slaughter in last 13-24 months	511	68	19	38	68	51	21	6	98	87	55
e12	No. herds with TB found at routine slaughter in 2008	450	60	16	37	68	36	18	6	90	72	47
e8	No. herds with TB found at routine slaughter in 2007	513	71	14	25	67	55	20	10	116	85	50
e9	No. herds with TB found at routine slaughter in 2006	461	63	19	33	65	43	28	16	80	77	37
e10	No. herds with TB found at routine slaughter in 2005	542	67	21	42	69	47	22	17	103	109	45
e11	No. herds with TB found at routine slaughter in 2004	630	66	32	72	87	43	36	9	129	99	57
e13	% of TB animals that were LRS in current year	6.3	4.8	12.5	6.6	9.1	1.8	12.4	7.9	7.4	6.7	6.5
e23	% of TB animals that were LRS in last 12 months	6.6	4.1	14.3	6.5	11.3	2.0	9.4	5.8	8.3	7.7	7.5
e24	% of TB animals that were LRS in last 13-24 months	8.2	11.3	15.4	7.1	12.4	4.7	9.8	4.5	9.6	6.5	7.2
e18	% of TB animals that were LRS in 2008	7.1	6.0	15.4	6.8	12.7	3.0	7.0	3.4	8.6	7.1	6.8
e14	% of TB animals that were LRS in 2007	8.7	13.4	13.2	5.7	10.6	5.1	7.6	18.3	9.2	7.0	10.0
e15	% of TB animals that were LRS in 2006	6.4	8.2	9.7	6.3	8.2	3.1	10.3	9.1	6.7	5.6	7.2
e16	% of TB animals that were LRS in 2005	5.9	9.5	6.1	4.2	5.5	3.4	8.0	11.3	7.1	6.2	5.1
e17	% of TB animals that were LRS in 2004	4.9	8.5	6.9	5.5	4.3	1.7	6.5	9.9	7.1	4.7	5.1

<b>Month = September 2009</b>												
Ref	(Data lagged by 4 months)	<b>Total</b>	<b>Armagh</b>	<b>Ballymena</b>	<b>Coleraine</b>	<b>Dungannon</b>	<b>Enniskillen</b>	<b>Larne</b>	<b>L'derry</b>	<b>Newry</b>	<b>Nt'ards</b>	<b>Omagh</b>
g1	No. of confirmed TB reactors during current year	<b>2297</b>	299	68	270	190	350	16	58	436	316	294
g31	No. of confirmed TB reactors during last 12 months	<b>3201</b>	506	84	369	236	532	45	108	562	393	366
g32	No. of confirmed TB reactors during last 13-24 months	<b>3337</b>	282	95	306	262	513	68	70	510	759	472
g6	No. of confirmed TB reactors 2008	<b>3298</b>	425	76	329	231	536	75	102	514	590	420
g2	No. of confirmed TB reactors 2007	<b>3204</b>	306	102	273	370	523	92	37	537	640	324
g3	No. of confirmed TB reactors 2006	<b>3973</b>	407	84	296	370	721	73	87	787	829	319
g4	No. of confirmed TB reactors 2005	<b>3990</b>	292	155	352	450	533	50	65	702	996	395
g5	No. of confirmed TB reactors 2004	<b>4950</b>	336	231	606	574	677	150	26	669	1133	548
g7	Total animals with confirmed TB during current year	<b>2702</b>	351	92	309	235	367	27	67	546	370	338
g33	Total animals with confirmed TB during last 12 months	<b>3807</b>	575	121	422	311	561	62	119	729	478	429
g34	Total animals with confirmed TB in last 13-24 months	<b>4042</b>	367	129	356	356	575	92	76	675	875	541
g12	Total animals with confirmed TB in 2008	<b>3936</b>	498	108	380	323	583	94	108	667	696	479
g8	Total animals with confirmed TB in 2007	<b>3899</b>	409	133	305	465	583	113	50	706	747	388
g9	Total animals with confirmed TB in 2006	<b>4613</b>	488	106	337	456	775	107	103	931	940	370
g10	Total animals with confirmed TB in 2005	<b>4646</b>	374	178	398	539	589	72	83	825	1142	446
g11	Total animals with confirmed TB in 2004	<b>5724</b>	414	269	693	672	730	196	35	821	1269	625
g13	Confirmed TB animal prevalence in current year (%)	<b>0.224</b>	0.260	0.124	0.208	0.162	0.289	0.031	0.158	0.284	0.275	0.233
g35	Confirmed TB animal prevalence in last 12 months (%)	<b>0.238</b>	0.342	0.110	0.201	0.159	0.339	0.045	0.195	0.324	0.281	0.210
g36	Confirmed TB animal prevalence in last 13-24 months (%)	<b>0.251</b>	0.217	0.116	0.173	0.185	0.337	0.067	0.119	0.298	0.503	0.260
g18	Confirmed TB animal prevalence in 2008 (%)	<b>0.247</b>	0.295	0.101	0.186	0.166	0.348	0.071	0.171	0.296	0.402	0.232
g14	Confirmed TB animal prevalence in 2007 (%)	<b>0.240</b>	0.237	0.116	0.142	0.233	0.335	0.083	0.080	0.313	0.418	0.189
g15	Confirmed TB animal prevalence in 2006 (%)	<b>0.228</b>	0.267	0.088	0.153	0.216	0.425	0.074	0.148	0.398	0.506	0.172
g16	Confirmed TB animal prevalence in 2005 (%)	<b>0.260</b>	0.204	0.142	0.168	0.242	0.319	0.048	0.125	0.352	0.595	0.196
g17	Confirmed TB animal prevalence in 2004 (%)	<b>0.290</b>	0.243	0.242	0.327	0.342	0.445	0.146	0.057	0.358	0.740	0.306

g19	No. herds with confirmed TB in current year	957	99	42	124	91	117	25	23	199	127	110
g37	No. herds with confirmed TB in last 12 months	1284	128	55	157	133	165	44	37	259	167	139
g38	No. herds with confirmed TB in last 13-24 months	1481	145	65	139	161	203	42	39	276	232	179
g24	No. herds with confirmed TB in 2008	1412	129	57	138	160	197	50	46	271	207	157
g20	No. herds with confirmed TB in 2007	1507	185	56	127	184	200	49	31	266	230	179
g21	No. herds with confirmed TB in 2006	1664	194	68	147	202	222	59	60	278	263	171
g22	No. herds with confirmed TB in 2005	1856	169	104	235	244	216	63	50	262	298	215
g23	No. herds with confirmed TB in 2004	1861	129	95	277	239	277	53	21	238	280	252
g25	Confirmed TB herd prevalence in current year (%)	5.46	5.39	4.63	6.85	4.31	4.93	2.26	3.81	6.50	8.78	4.86
g39	Confirmed TB herd prevalence in last 12 months (%)	5.54	5.69	3.94	6.17	4.68	5.34	2.59	4.31	7.21	9.18	4.51
g40	Confirmed TB herd prevalence in last 13-24 months (%)	6.34	6.42	4.57	5.38	5.72	6.57	2.43	4.38	7.58	12.78	5.72
g30	Confirmed TB herd prevalence in 2008 (%)	6.18	5.79	4.14	5.46	5.78	6.58	3.05	5.33	7.56	11.52	5.13
g26	Confirmed TB herd prevalence in 2007 (%)	6.37	8.21	3.88	4.77	6.39	6.41	2.88	3.61	7.21	12.16	5.70
g27	Confirmed TB herd prevalence in 2006 (%)	6.85	8.19	4.55	5.43	6.86	7.00	3.38	6.43	7.38	13.50	5.31
g28	Confirmed TB herd prevalence in 2005 (%)	7.48	6.95	6.80	8.32	8.05	6.74	3.56	5.53	6.82	14.86	6.55
g29	Confirmed TB herd prevalence in 2004 (%)	7.34	5.23	5.98	9.63	7.64	8.45	2.80	2.19	6.21	13.87	7.62

## Explanatory Comments for Tuberculosis Statistics - B. Testing Herds

B16	No. herds with any test completed in month	Test of any disease status and size (herd or animal-level). Tests with no animals are excluded.
B17	No. herds with any test, from start of year	<b>Test of any disease status and size (herd or animal-level) carried out on a herd since 1st January. Tests with no animals are excluded.</b>
B29	All herds with any test, from start of year	Skin test of any disease status and size (herd or animal-level) carried out on a herd since 1st January. Tests with no animals are included.
B18	No. herds with any test, from start of year (no cattle)	Herd or individual test of any disease status (routine, risk or restricted) where no cattle were recorded at all such tests since 1st January
B19	No. herds with herd test completed in month	Herd level test of any disease status (routine, risk or restricted) completed during the above month. Tests with no animals are excluded.
B20	No. herds with herd test, from start of year	<b>Herd level test of any disease status (routine, risk or restricted) completed since 1st January. Tests with no animals are excluded.</b>
B30	All herds with herd test, from start of year	Herd level test of any disease status (routine, risk or restricted) completed since 1st January. Tests with no animals are included.
B21	No. herds with herd test, from start of year (no cattle)	Herd level test of any disease status (routine, risk or restricted) where no cattle were recorded at all such herd tests since 1st January.
B22	No. herds with herd test during last 12 months	Herd level test of any disease status (routine, risk or restricted) completed in the 12 month period from the above month. Tests with no animals are excluded.
B31	No. herds with herd test during last 13-24 months	Herd level test of any disease status (routine, risk or restricted) completed in the 13-24 months from the above month. Tests with no animals are excluded.
B39	No. herds with herd test during 2005	Herd level test of any disease status (routine, risk or restricted) completed in the calendar year. Tests with no animals are excluded.
B32	No. herds with herd test during 2009	Herd level test of any disease status (routine, risk or restricted) completed in the calendar year. Tests with no animals are excluded.
B28	No. herds with herd test during 2008	Herd level test of any disease status (routine, risk or restricted) completed in the calendar year. Tests with no animals are excluded.
B23	No. herds with herd test during 2007	Herd level test of any disease status (routine, risk or restricted) completed in the calendar year. Tests with no animals are excluded.
B24	No. herds with herd test during 2006	Herd level test of any disease status (routine, risk or restricted) completed in the calendar year. Tests with no animals are excluded.
B25	No. herds with any risk test completed	Herd has had a herd or individual level risk test since start of calendar year and number tested > 0
B26	No. herds with herd risk test completed	Herd has had a herd level risk test since start of calendar year and number tested > 0.
B27	No. herds with restricted herd test completed	Herd has had a restricted herd test (RHT, RH1, RH2) since start of calendar year and number tested

## Explanatory Comments for Tuberculosis Statistics - C. Testing Animals

Ref	Data Title	Explanation
C1	Total number of tests in current month	Number of herds and individual tests performed in the month stated above. Tests with no animals are excluded
C2	Total number of tests from start of year	From 1st January. Tests with no animals are excluded.
C3	No. tests during the same time period in the previous year	From 1st January of previous year. Tests with no animals are excluded.
C4	% change between years	<b>Difference between the number of tests carried out during the current year and the number carried out in the previous expressed as a percentage.</b>
C5	No. tests in the previous 12 months	Last 12 month period from the above month. Tests with no animals are excluded.
C6	No. animal tests in current month	Animal test = a count of the number of animals tested within each herd or individual test. Some animals may have been tested multiple times during the year.
C7	No. animal tests from start of year	Number of animal tests carried out since 1st January.
C8	No. animal tests during the same time period in the previous year	Number of animal tests carried out from 1st January in the previous year over the same time interval as recorded for the current year.
C9	% change between years	Difference between the number of animal tests during the current year and the number carried out in the previous expressed as a percentage.
C10	No. animal tests in previous 12 months	Last 12 month period from the above month.
C11	No. cattle eligible for TB testing	Based on the average number of animals presented at TB herd tests over last 4 years.
C12	No. cattle herds eligible for TB testing	Based on cattle being presented for a TB herd tests over last 4 years. Herds with '0' cattle are excluded.
C13	No. restricted herd tests during month	All restricted herd tests (RHT, RH1 and RH2) carried out during the above month.
C14	No. animals tested	Total of the animals reported as being tested within restricted herd tests (RHT, RH1, RH2) during the above month.
C15	No. herd tests during month	Total of the animals reported as being tested within all herd tests during the above month.
C16	No. animals tested	Total of the animals reported as being tested within all herd tests during the above month.
C17	No. individual tests during month	Total of the animals reported as being tested within all individual tests during the above month.
C18	No. animals tested	Total of the animals reported as being tested within all individual tests during the above month.
C23	No. animals TB tested since start of year	Animals identified as having had at least one TB skin test since the start of the calendar year. Due to the same animals being sampled in different DVO areas, the 'Total' is not the sum of the DVO figures.
C19	No. animals TB tested in previous 12 months	Animals identified as having had at least one TB skin test during the last 12 month period from the above month. Due to the same animals being sampled in different DVO areas, the 'Total' is not the sum of the DVO figures.
C24	No. animals TB tested in previous 13-24 months	Animals identified as having had at least one TB skin test during the last 13-24 months from the above month. Due to the same animals being sampled in different DVO areas, the 'Total' is not the sum of the DVO figures
C26	No. animals TB tested in 2005	Animals identified as having had at least one TB skin test during the calendar year. Due to the same animals being sampled in different DVO areas, the 'Total' is not the sum of the DVO figures.
C25	No. animals TB tested in 2009	Animals identified as having had at least one TB skin test during the calendar year. Due to the same animals being sampled in different DVO areas, the 'Total' is not the sum of the DVO figures.
C22	No. animals TB tested in 2008	Animals identified as having had at least one TB skin test during the calendar year. Due to the same animals being sampled in different DVO areas, the 'Total' is not the sum of the DVO figures.
C20	No. animals TB tested in 2007	Animals identified as having had at least one TB skin test during the calendar year. Due to the same animals being sampled in different DVO areas, the 'Total' is not the sum of the DVO figures.
C21	No. animals TB tested in 2006	Animals identified as having had at least one TB skin test during the calendar year. Due to the same animals being sampled in different DVO areas, the 'Total' is not the sum of the DVO figures.

## Explanatory Comments for Tuberculosis Statistics - D. Results

Ref	Data Title	Explanation
D1	No. of herds with TB reactors during month	A herd is included in this figure if the herd number had a TB skin test reactor during the above month.
D2	No. of new reactor herds during month	A herd is defined as being a TB reactor herd if it had at least one TB reactor animal in that month and no TB reactor animals during the previous 12 months.
D3	No. of new reactor herds since start of year	= Since 1st January
D4	No. of new reactor herds in the previous 12 months	Last 12 month period from the above month.
D26	No. of new reactor herds in previous 13-24 months	Last 13-24 month period from the above month.
D5	No. of TB reactor animals during month	A TB reactor animal is defined as an animal where the manual interpretation field for a skin test is positive ('P') with the first test date being taken as the time at which the animal became a reactor. Currently animals with lesionas at routine slaughter ("LRS")are not taken into account
D6	No. of TB reactor animals since start of year	= Since 1st January
D7	No. of reactor animals in the previous 12 months	Last 12 month period from the above month.
D27	No. of reactor animals in previous 13-24 months	Last 13-24 month period from the above month.
D8	Herd Prevalence (%)	Number of herds with a TB reactor during the above month as a proportion of cattle herds which have presented cattle for a TB herd test during the same time period.
D20	Cumulative herd incidence in year (%)	Number of NEW reactor herds since the start of the calendar year as a proportion of cattle herds which have presented cattle for a TB herd test during the same time period.
D9	Annual herd incidence over the last 12 months (%)	Number of NEW reactor herds during the last 12 months as a proportion of cattle herds which have presented cattle for a TB herd test during the same time period.
D28	Annual herd incidence over the last 13-24 months (%)	Number of NEW reactor herds during the last 13-24 months as a proportion of cattle herds which have presented cattle for a TB herd test during the same time period.
D38	2005 Herd Incidence (%)	Number of NEW reactor herds during the year as a proportion of cattle herds which have presented cattle for a TB herd test during the same time period.
D30	2009 Herd Incidence (%)	Number of NEW reactor herds during the year as a proportion of cattle herds which have presented cattle for a TB herd test during the same time period.
D16	2008 Herd Incidence (%)	Number of NEW reactor herds during the year as a proportion of cattle herds which have presented cattle for a TB herd test during the same time period.
D10	2007 Herd Incidence (%)	Number of NEW reactor herds during the year as a proportion of cattle herds which have presented cattle for a TB herd test during the same time period.
D11	2006 Herd Incidence (%)	Number of NEW reactor herds during the year as a proportion of cattle herds which have presented cattle for a TB herd test during the same time period.
D21	Cumulative animal incidence in year (%)	Number of reactor animals during the above month as a proportion of cattle which have been presented for a TB test during the same time period.
D12	Annual animal incidence over the last 12 months (%)	Number of reactor animals during the last 12 months as a proportion of cattle which have been presented for a TB test during the same time period.
D29	Annual animal incidence over the last 13-24 months (%)	Number of reactor animals during the last 13-24 months as a proportion of cattle which have been presented for a TB test during the same time period.
D39	2005 Animal Incidence (%)	Number of reactor animals during the year as a proportion of cattle which have been presented for a TB herd test during the same time period.
D31	2009 Animal Incidence (%)	Number of reactor animals during the year as a proportion of cattle which have been presented for a TB herd test during the same time period.
D15	2008 Animal Incidence (%)	Number of reactor animals during the year as a proportion of cattle which have been presented for a TB herd test during the same time period.
D13	2007 Animal Incidence (%)	Number of reactor animals during the year as a proportion of cattle which have been presented for a TB herd test during the same time period.
D14	2006 Animal Incidence (%)	Number of reactor animals during 2006 as a proportion of cattle which have been presented for a TB herd test during the same time period.

<b>D34</b>	<b>APT during current month</b>	= The reactor disclosure rate per 1,000 animal tests current calendar month.
<b>D22</b>	<b>APT since start of year</b>	The reactor disclosure rate per 1,000 animal tests since the start of the calendar year.
<b>D17</b>	<b>Current 12 month moving average APT</b>	The reactor disclosure rate per 1,000 animal tests. Current refers to the rate over the last 12 months.
<b>D42</b>	<b>2006 APT</b>	The reactor disclosure rate per 1,000 animal tests during the calendar year.
<b>D40</b>	<b>2005 APT</b>	The reactor disclosure rate per 1,000 animal tests during the calendar year.
<b>D32</b>	<b>2009 APT</b>	The reactor disclosure rate per 1,000 animal tests during the calendar year.
<b>D18</b>	<b>2008 APT</b>	The reactor disclosure rate per 1,000 animal tests during the calendar year.
<b>D19</b>	<b>2007 APT</b>	The reactor disclosure rate per 1,000 animal tests during the calendar year.
<b>D23</b>	<b>No. negative in contacts since start of year</b>	Number of animals taken as negative in contacts since the start of the year
<b>d46</b>	<b>No. Negative in contacts over last 12 months (%)</b>	= Number of negative in contacts during the last 12 months
<b>D43</b>	<b>No. negative in contacts during 2006</b>	Number of animals taken as negative in contacts during the year
<b>D41</b>	<b>No. negative in contacts during 2005</b>	Number of animals taken as negative in contacts during the year
<b>D33</b>	<b>No. negative in contacts during 2004</b>	Number of animals taken as negative in contacts during the year
<b>D24</b>	<b>No. negative in contacts during 2008</b>	Number of animals taken as negative in contacts during the year
<b>D25</b>	<b>No. negative in contacts during 2007</b>	Number of animals taken as negative in contacts during the year
<b>D37</b>	<b>Reactor removal time 2008</b>	Figures given are median values for working days estimated from calendar days (calendar days multiplied by 0.685). Reactors which are not yet slaughtered or where they they were first declared as reactors at slaughter are excluded.
<b>D45</b>	<b>Reactor removal time 2007</b>	Figures given are median values for working days estimated from calendar days (calendar days multiplied by 0.685). Reactors which are not yet slaughtered or where they they were first declared as reactors at slaughter are excluded.
<b>D35</b>	<b>Reactor removal time 2006</b>	Figures given are median values for working days estimated from calendar days (calendar days multiplied by 0.685). Reactors which are not yet slaughtered or where they they were first declared as reactors at slaughter are excluded.
<b>D44</b>	<b>Reactor removal time 2005</b>	Figures given are median values for working days estimated from calendar days (calendar days multiplied by 0.685). Reactors which are not yet slaughtered or where they they were first declared as reactors at slaughter are excluded.
<b>D36</b>	<b>Reactor removal time 2009</b>	Figures given are median values for working days estimated from calendar days (calendar days multiplied by 0.685). Reactors which are not yet slaughtered or where they they were first declared as reactors at slaughter are excluded.

### Explanatory Comments for LRS Data

<b>E1</b>	No. TB animals found at routine slaughter in current year	Animals where M. bovis was cultured from TB-like lesions found at routine slaughter (LRS) during the year that were not identified as TB reactor animals
<b>E19</b>	No. TB animals found at routine slaughter in last 12 months	Animals where M. bovis was cultured from TB-like lesions found at routine slaughter (LRS) during the last 12 months that were not identified as TB reactor animals
<b>E20</b>	No. TB animals found at routine slaughter in last 13-24 months	Animals where M. bovis was cultured from TB-like lesions found at routine slaughter (LRS) during the last 12-24 months that were not identified as TB reactor animals
<b>E6</b>	No. TB animals found at routine slaughter in 2008	Animals where M. bovis was cultured from TB-like lesions found at routine slaughter (LRS) during the year that were not identified as TB reactor animals
<b>E20</b>	No. TB animals found at routine slaughter in 2007	Animals where M. bovis was cultured from TB-like lesions found at routine slaughter (LRS) during the year that were not identified as TB reactor animals
<b>E3</b>	No. TB animals found at routine slaughter in 2006	Animals where M. bovis was cultured from TB-like lesions found at routine slaughter (LRS) during the year that were not identified as TB reactor animals
<b>E4</b>	No. TB animals found at routine slaughter in 2005	Animals where M. bovis was cultured from TB-like lesions found at routine slaughter (LRS) during the year that were not identified as TB reactor animals
<b>E5</b>	No. TB animals found at routine slaughter in 2004	Animals where M. bovis was cultured from TB-like lesions found at routine slaughter (LRS) during the year that were not identified as TB reactor animals
<b>E7</b>	No. herds with TB found at routine slaughter in current year	Herds where M. bovis was cultured from TB-like lesions found in at least one animal at routine slaughter (LRS) during the year
<b>E21</b>	No. herds with TB found at routine slaughter in last 12 months	Herds where M. bovis was cultured from TB-like lesions found in at least one animal at routine slaughter (LRS) during the last 12 months
<b>E22</b>	No. herds with TB found at routine slaughter in last 13-24 months	Herds where M. bovis was cultured from TB-like lesions found in at least one animal at routine slaughter (LRS) during the last 13-24 months
<b>E12</b>	No. herds with TB found at routine slaughter in 2008	Herds where M. bovis was cultured from TB-like lesions found in at least one animal at routine slaughter (LRS) during the year
<b>E8</b>	No. herds with TB found at routine slaughter in 2007	Herds where M. bovis was cultured from TB-like lesions found in at least one animal at routine slaughter (LRS) during the year
<b>E9</b>	No. herds with TB found at routine slaughter in 2006	Herds where M. bovis was cultured from TB-like lesions found in at least one animal at routine slaughter (LRS) during the year
<b>E10</b>	No. herds with TB found at routine slaughter in 2005	Herds where M. bovis was cultured from TB-like lesions found in at least one animal at routine slaughter (LRS) during the year
<b>E11</b>	No. herds with TB found at routine slaughter in 2004	Herds where M. bovis was cultured from TB-like lesions found in at least one animal at routine slaughter (LRS) during the year
<b>E13</b>	% of TB animals that were LRS in current year	Herds where M. bovis was cultured from TB-like lesions found in at least one animal at routine slaughter (LRS) during the year
<b>E23</b>	% of TB animals that were LRS in last 12 months	Number of confirmedLRS animals divided by the number of TB reactors and confirmed LRS animals during the year expressed as a %
<b>E24</b>	% of TB animals that were LRS in last 13-24 months	Number of confirmedLRS animals divided by the number of TB reactors and confirmed LRS animals during the year expressed as a %
<b>E18</b>	% of TB animals that were LRS in 2008	Number of confirmedLRS animals divided by the number of TB reactors and confirmed LRS animals during the year expressed as a %
<b>E14</b>	% of TB animals that were LRS in 2007	Number of confirmedLRS animals divided by the number of TB reactors and confirmed LRS animals during the year expressed as a %
<b>E15</b>	% of TB animals that were LRS in 2006	Number of confirmedLRS animals divided by the number of TB reactors and confirmed LRS animals during the year expressed as a %
<b>E16</b>	% of TB animals that were LRS in 2005	Number of confirmedLRS animals divided by the number of TB reactors and confirmed LRS animals during the year expressed as a %
<b>E17</b>	% of TB animals that were LRS in 2004	Number of confirmedLRS animals divided by the number of TB reactors and confirmed LRS animals during the year expressed as a %