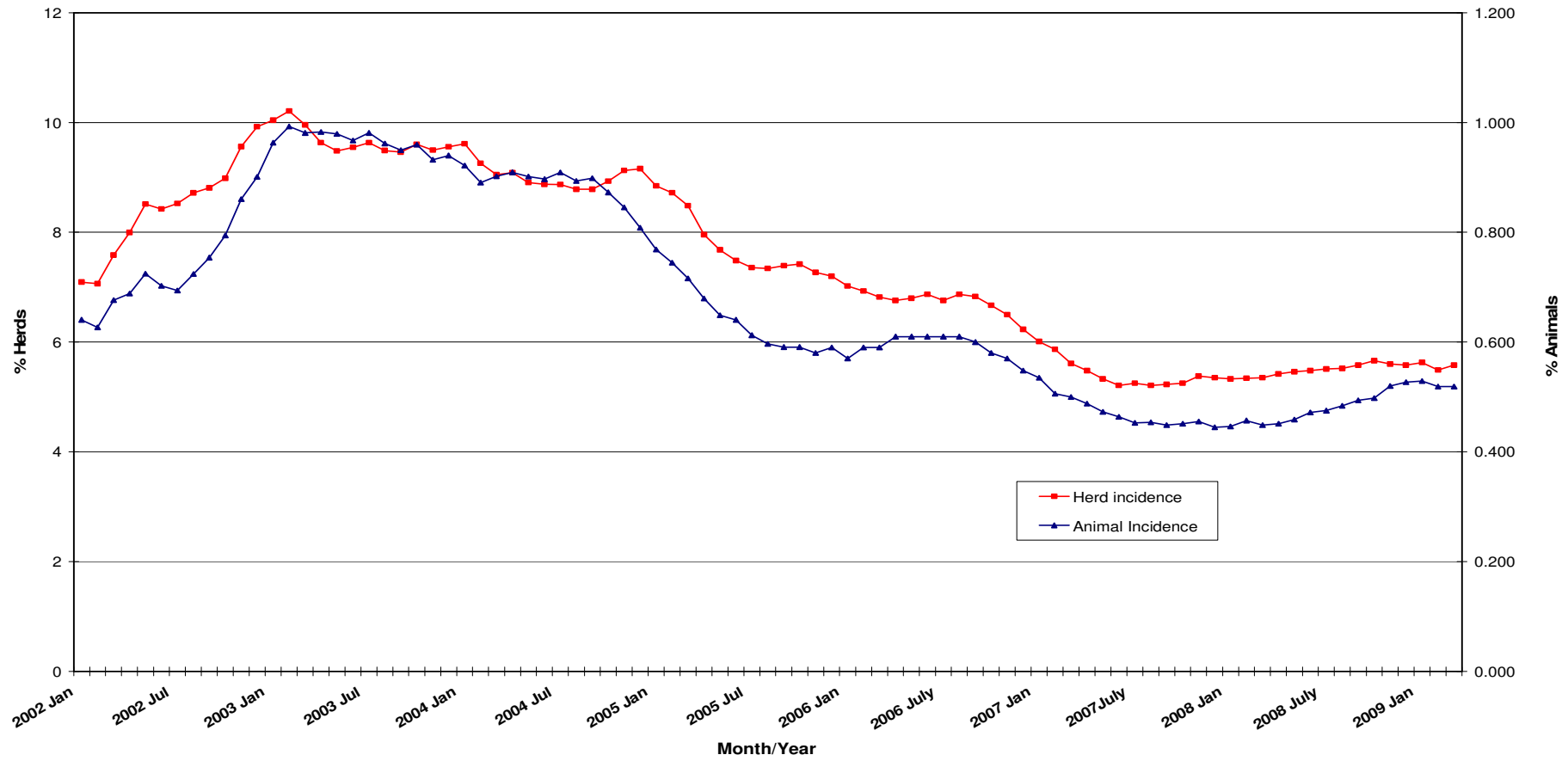
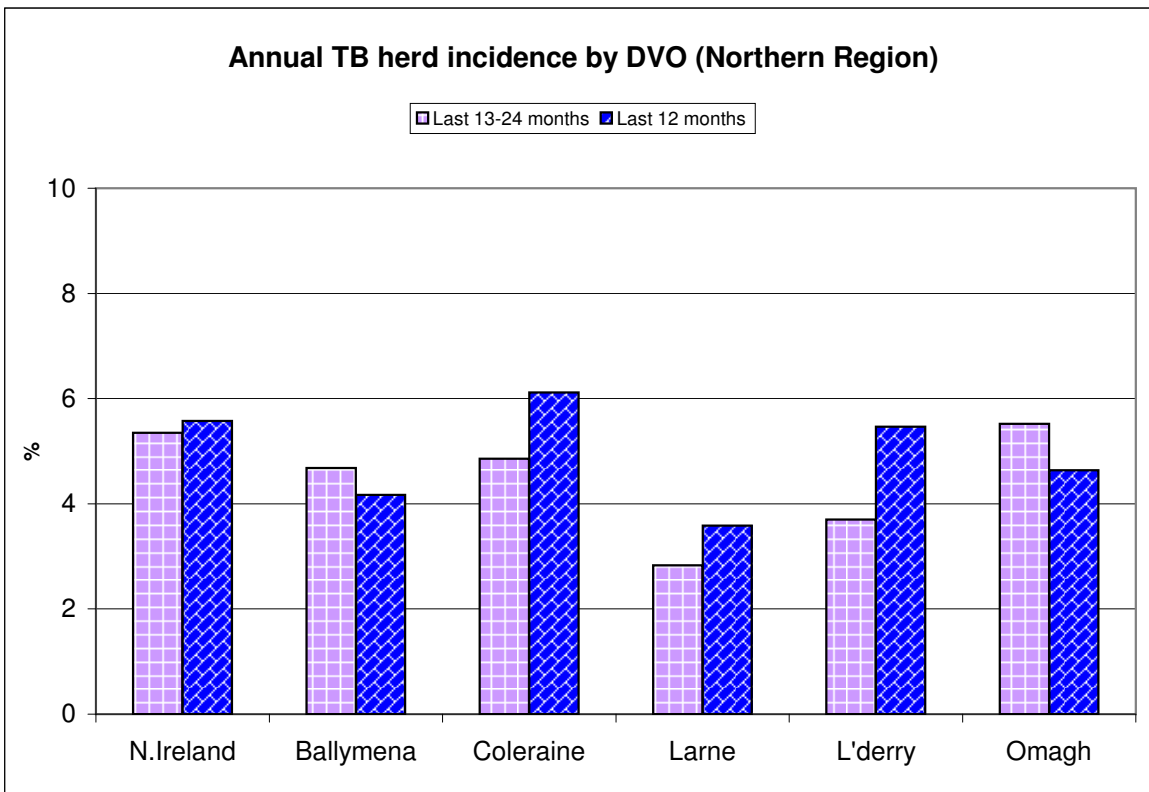
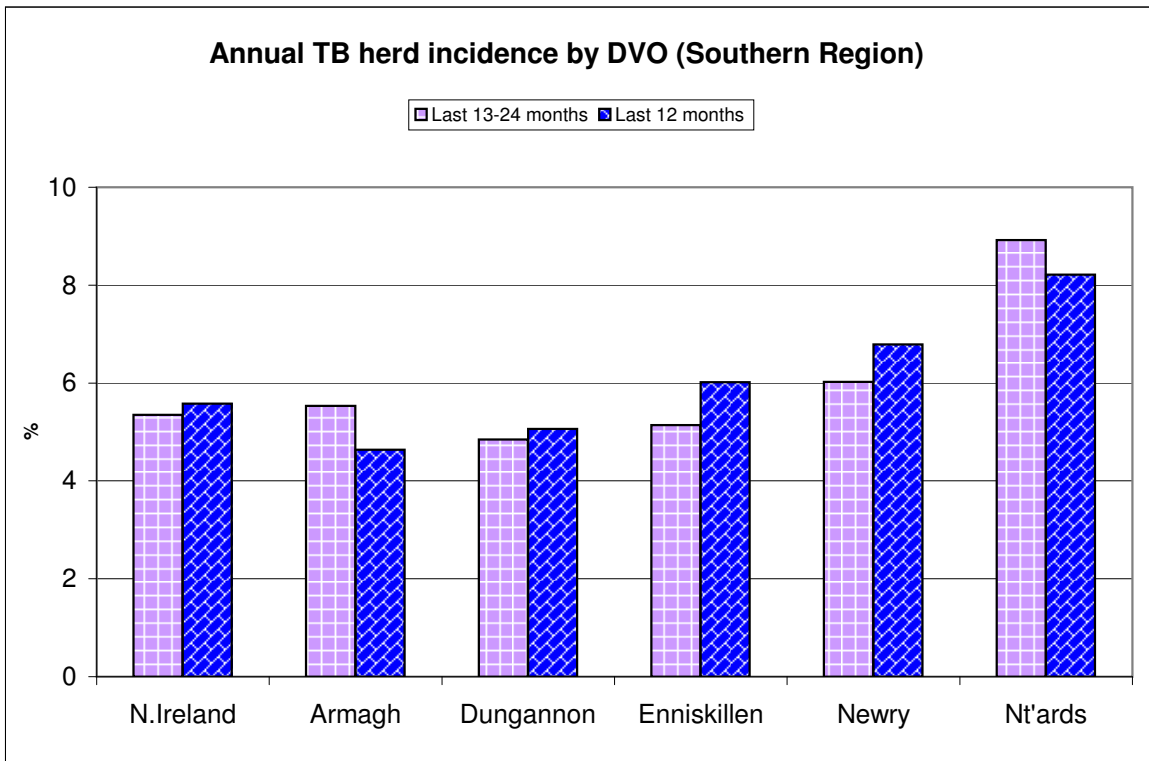


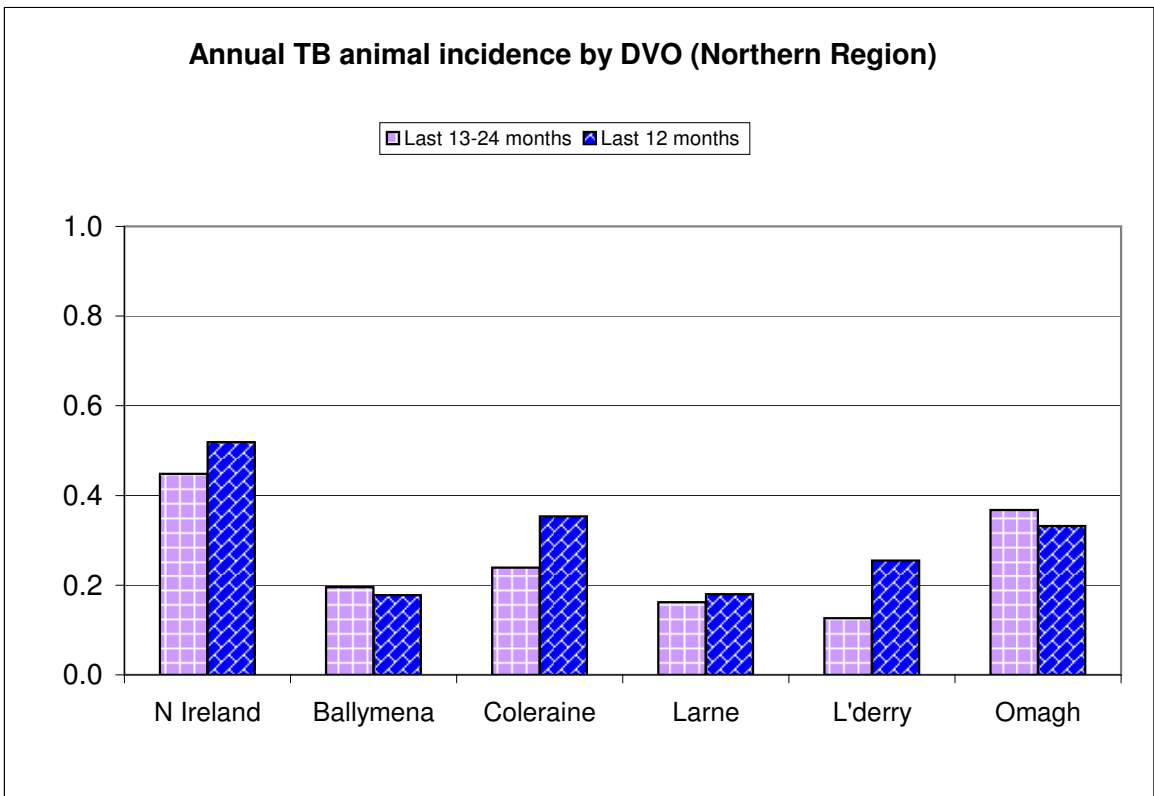
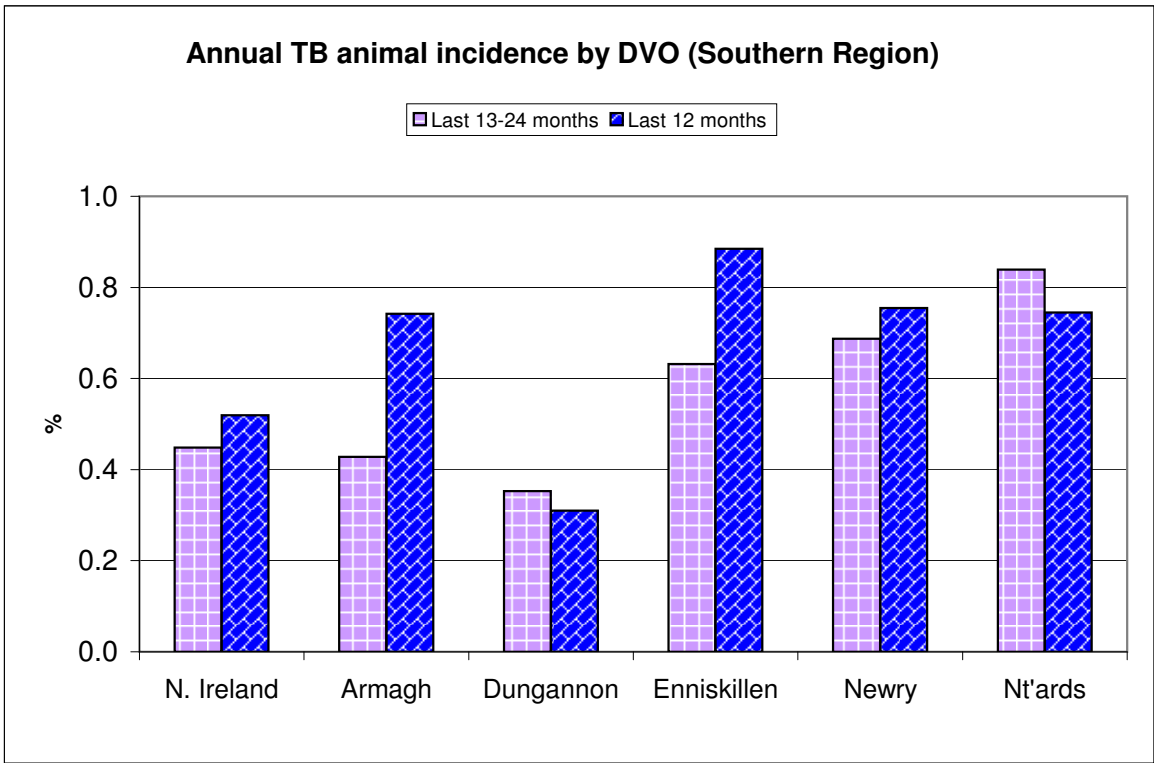
**Tuberculosis: Statistics for March 2009**

<b>Tests Completed</b>	{	Herds	<a href="#">Number of herds tested (any test), by DVO</a>	<a href="#">Cumulative Statistics</a>	
			<a href="#">Number of herds with herd-level test, by DVO</a>	<a href="#">Cumulative Statistics</a>	
			<a href="#">Number of herds with any risk test, by DVO</a>		
			<a href="#">Number of herds with herd-level risk test, by DVO</a>		
			<a href="#">Number of herds with herd-level restricted test, by DVO</a>		
	{	Animals	<a href="#">Total number of tests performed, by DVO</a>	<a href="#">Cumulative Statistics</a>	
			<a href="#">Total number of animals tests, by DVO</a>	<a href="#">Cumulative Statistics</a>	
			<a href="#">Total number of restricted herd tests, by DVO</a>	<a href="#">Number of animals tested</a>	
			<a href="#">Total number of herd tests, by DVO</a>	<a href="#">Number of animals tested</a>	
			<a href="#">Total number of individual tests, by DVO</a>	<a href="#">Number of animals tested</a>	
			<a href="#">Total number of animals tested, by DVO</a>		
	<b>Summary Statistics</b>	{	<a href="#">Herds with TB reactors during month, by DVO</a>	<a href="#">Cumulative Statistics</a>	<a href="#">APT</a>
			<a href="#">Number of new reactor herds, by DVO</a>	<a href="#">Cumulative Statistics</a>	<a href="#">Negative-in-contacts</a>
<a href="#">Number of new reactor animals, by DVO</a>				<a href="#">Reactor removal times</a>	
<a href="#">Herd Prevalance</a>					
<a href="#">Herd Incidence</a>					
<a href="#">Animal Incidence</a>					
<a href="#">Number of reactor animals by month and by DVO</a>					
<a href="#">Number of new reactor herds by month and by DVO</a>					
<a href="#">Total number of all reactor herds by DVO</a>					
<b>Summary Charts</b>	{	<a href="#">Current Animal Incidence Chart</a>	<a href="#">Monthly TB reactors chart</a>		
		<a href="#">Yearly Animal Incidence Chart</a>	<a href="#">New TB reactor herds</a>		
		<a href="#">Current Herd Incidence Chart</a>	<a href="#">TB Herd &amp; Animal Incidence</a>		
		<a href="#">Yearly Herd Incidence Chart</a>			

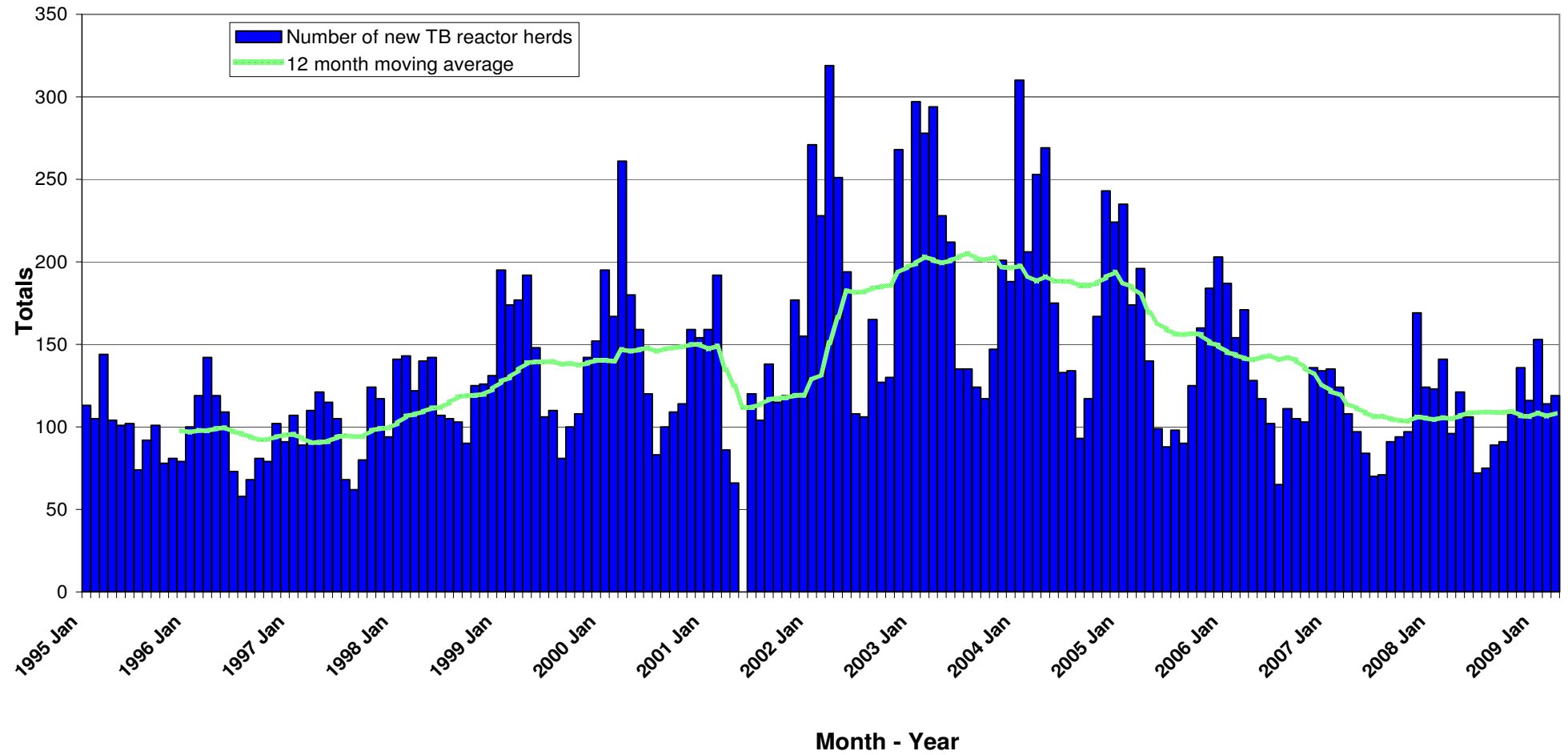
**TB Herd and Animal Incidence:  
(12 month moving average: January 2002 to March 2009)**



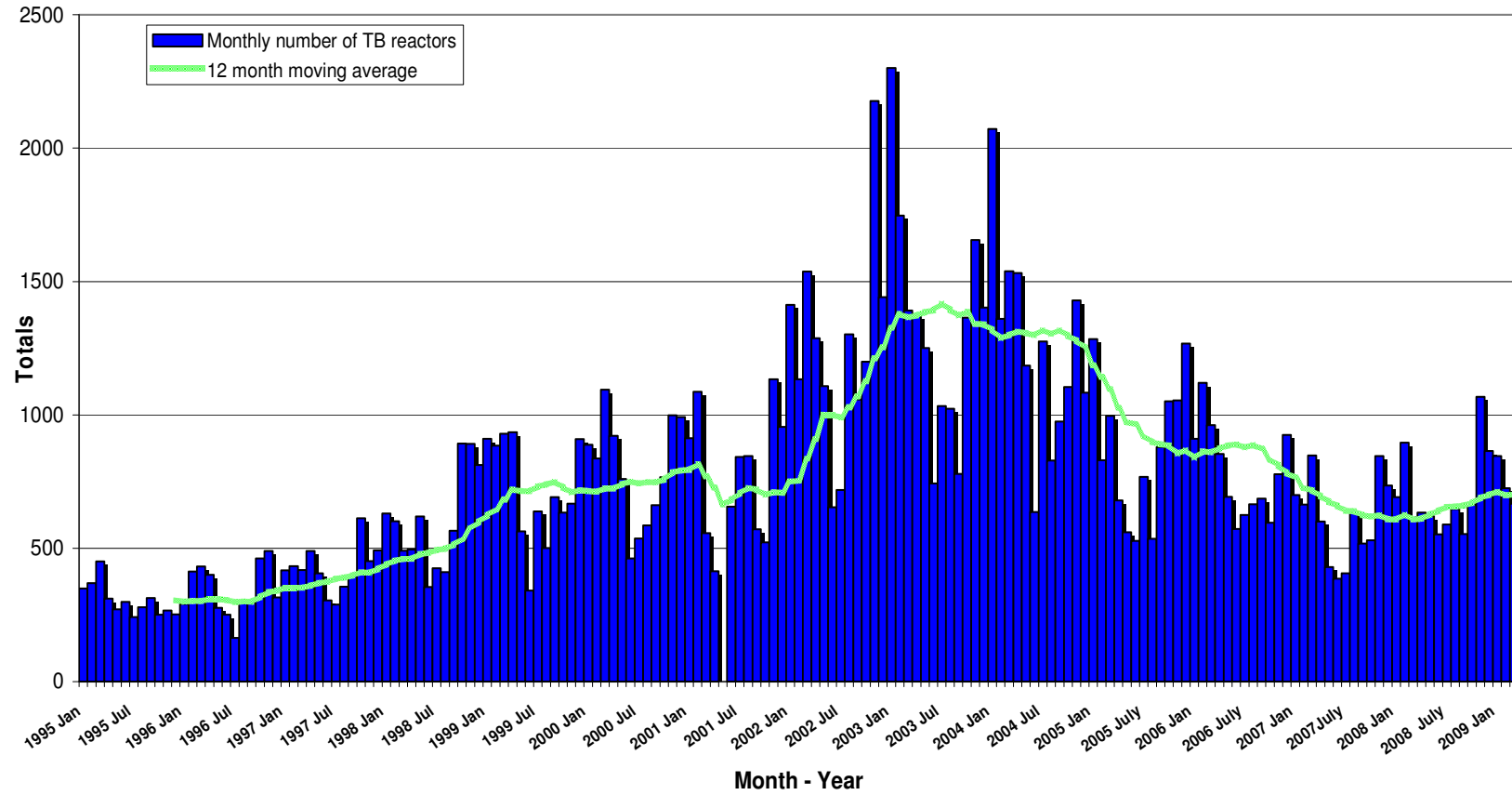


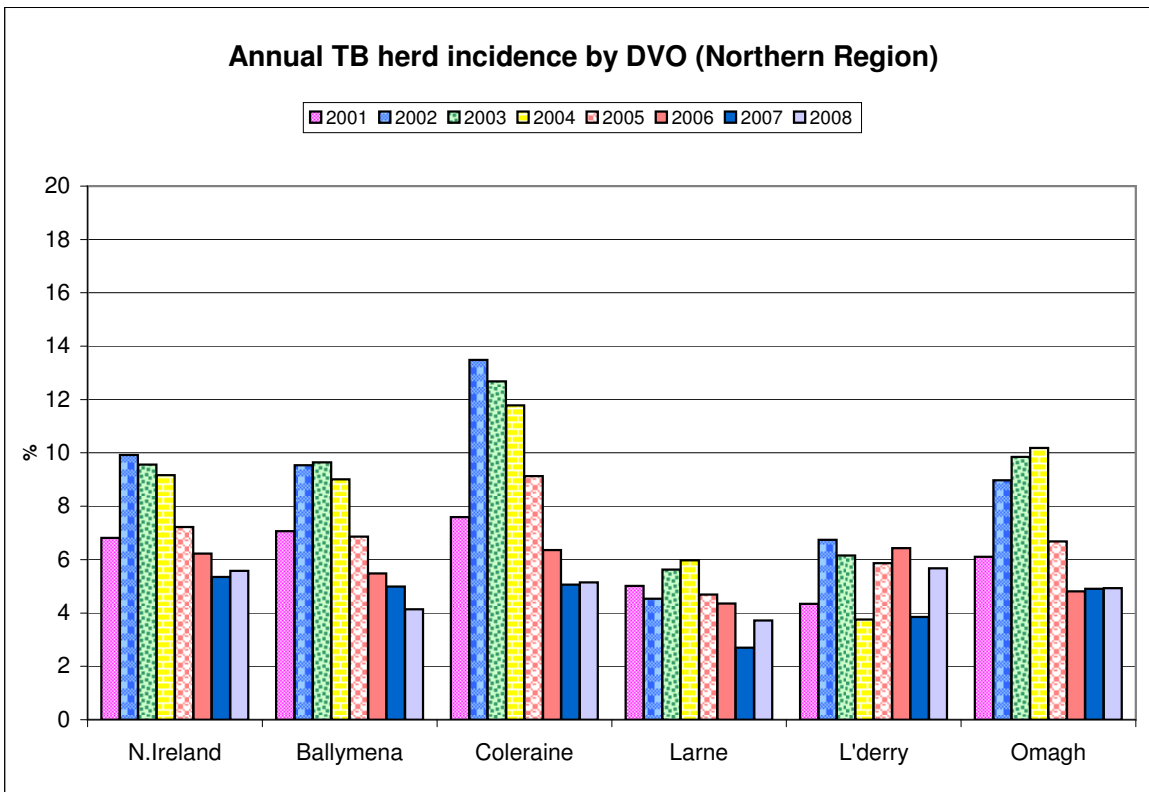
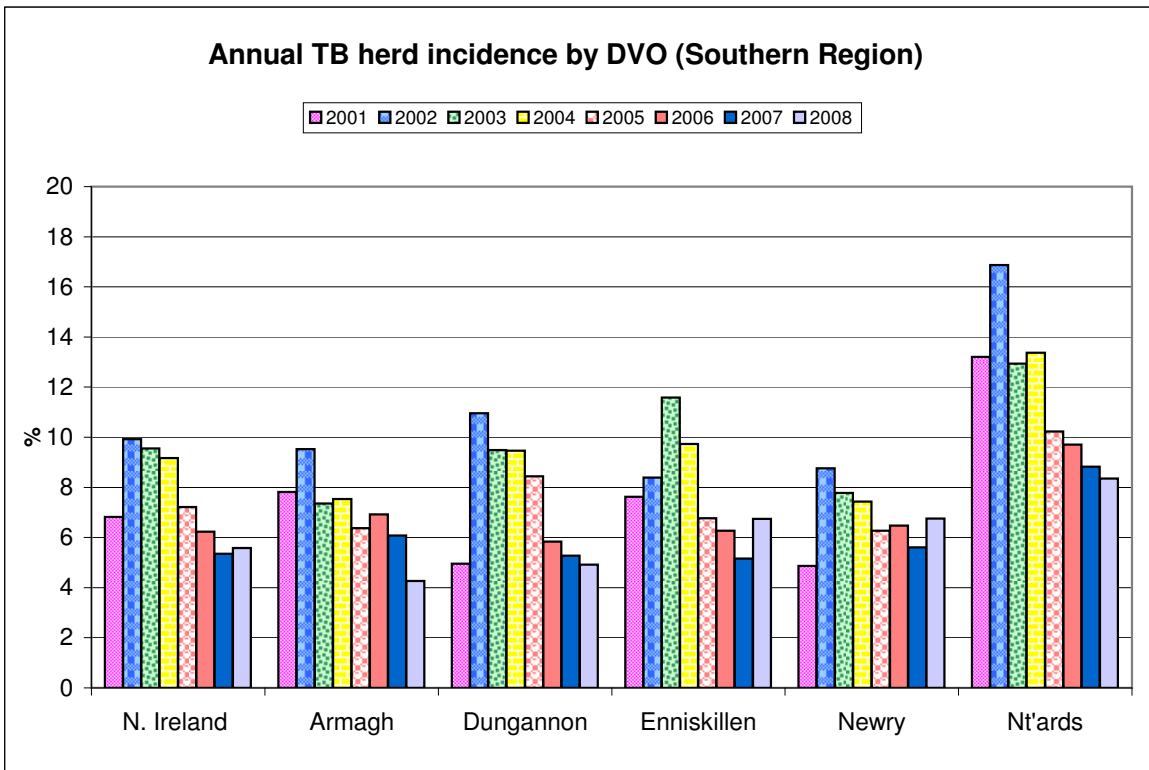


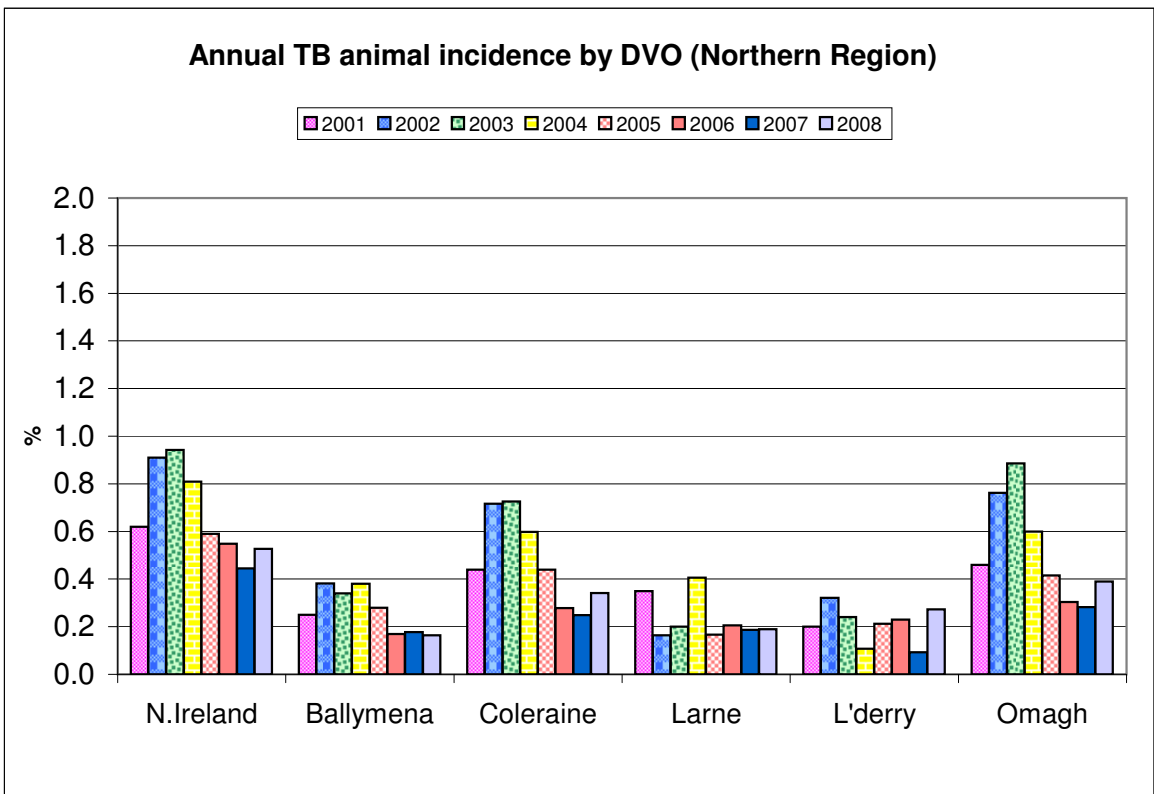
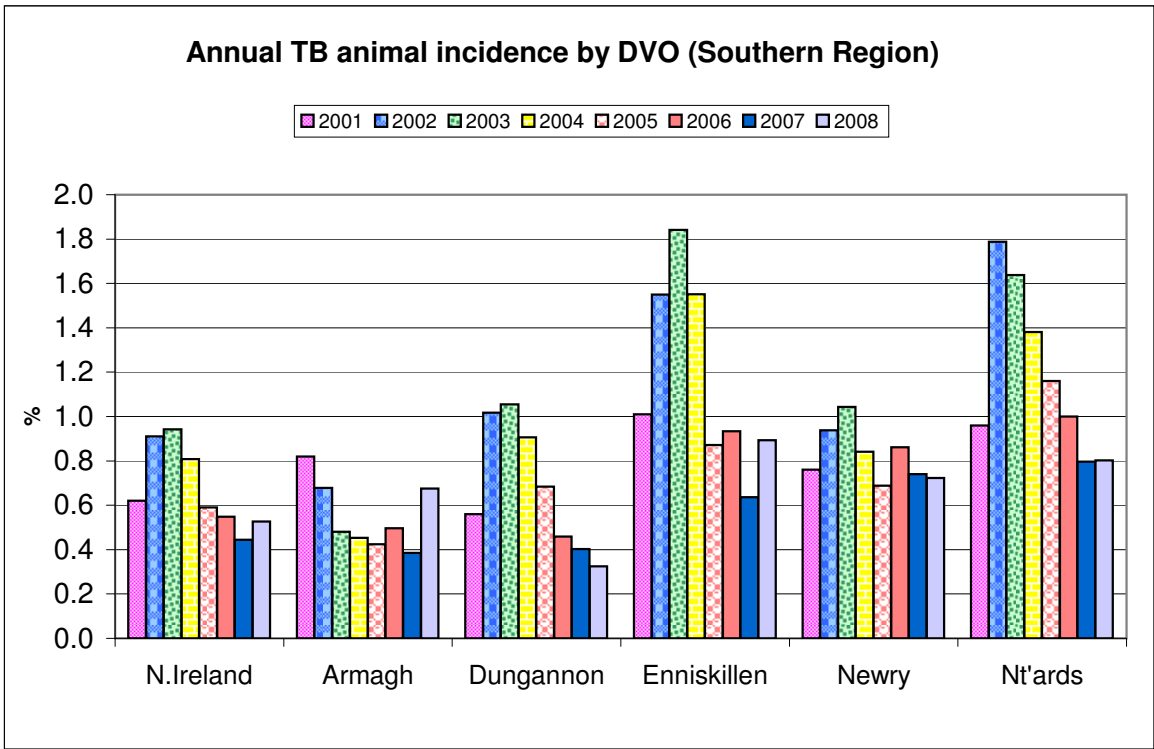
New TB Reactor Herds: January 1995 to March 2009



TB Reactors: January 1995 to March 2009







**Month = March 2009**

Ref.	Total	Armagh	Ballymena	Coleraine	Dungannon	Enniskillen	Larne	L'derry	Newry	Nt'ards	Omagh	
d1	<b>No. of herds with TB reactors during month</b>	<b>188</b>	<b>23</b>	<b>6</b>	<b>28</b>	<b>27</b>	<b>18</b>	<b>6</b>	<b>4</b>	<b>34</b>	<b>24</b>	<b>18</b>
d2	<b>No. of new reactor herds during month</b>	<b>119</b>	<b>15</b>	<b>4</b>	<b>18</b>	<b>20</b>	<b>9</b>	<b>4</b>	<b>2</b>	<b>17</b>	<b>16</b>	<b>14</b>
d3	No. of new reactor herds since start of year	<b>387</b>	36	23	62	47	37	20	11	64	35	52
d4	No. of new reactor herds in the previous 12 months	<b>1300</b>	104	59	158	145	186	61	48	246	150	143
d26	No. of new reactor herds in the previous 13-24 months	<b>1257</b>	125	67	127	139	159	48	33	220	165	174
d5	<b>No. of TB reactor animals during month</b>	<b>666</b>	<b>133</b>	<b>38</b>	<b>67</b>	<b>74</b>	<b>66</b>	<b>12</b>	<b>5</b>	<b>120</b>	<b>92</b>	<b>59</b>
d6	No. of TB reactor animals since start of year	<b>2237</b>	357	91	270	200	293	51	27	444	306	198
d7	No. of reactor animals in the previous 12 months	<b>8423</b>	1271	197	744	617	1482	247	159	1721	1292	693
d27	No. of reactor animals in the previous 13-24 months	<b>7293</b>	738	220	501	696	1085	220	82	1527	1473	751
d8	<b>Herd Prevalence (%)</b>	<b>6.50</b>	6.67	3.85	9.06	8.16	5.28	3.09	4.21	6.90	8.76	5.08
d20	<b>Cumulative herd incidence in year (%)</b>	<b>3.79</b>	1.60	1.63	2.40	1.64	1.20	1.18	1.25	1.77	1.92	1.69
d9	<b>Annual herd incidence over the last 12 months (%)</b>	<b>5.58</b>	4.63	4.17	6.11	5.06	6.02	3.59	5.47	6.79	8.21	4.64
d28	<b>Annual herd incidence over the last 13-24 months (%)</b>	<b>5.35</b>	5.53	4.68	4.86	4.84	5.14	2.83	3.70	6.02	8.92	5.52
d16	<b>2008 Herd Incidence (%)</b>	<b>5.57</b>	4.27	4.14	5.14	4.92	6.74	3.72	5.68	6.75	8.35	4.93
d10	<b>2007 Herd Incidence (%)</b>	<b>5.35</b>	6.08	4.99	5.07	5.28	5.16	2.70	3.85	5.61	8.83	4.90
d11	<b>2006 Herd Incidence (%)</b>	<b>6.23</b>	6.92	5.48	6.36	5.84	6.27	4.36	6.43	6.48	9.70	4.81
d38	<b>2005 Herd Incidence (%)</b>	<b>7.22</b>	6.38	6.87	9.13	8.45	6.77	4.69	5.86	6.28	10.22	6.68
d30	<b>2004 Herd Incidence (%)</b>	<b>9.17</b>	7.54	9.01	11.78	9.47	9.73	5.97	3.75	7.44	13.37	10.19
d21	<b>Cumulative animal incidence in year (%)</b>	<b>0.302</b>	0.458	0.183	0.301	0.251	0.413	0.076	0.096	0.401	0.375	0.223
d12	<b>Annual animal incidence over the last 12 months (%)</b>	<b>0.519</b>	0.742	0.178	0.353	0.310	0.885	0.180	0.255	0.755	0.745	0.332
d29	<b>Annual animal incidence over the last 13-24 months (%)</b>	<b>0.448</b>	0.428	0.196	0.239	0.353	0.632	0.162	0.127	0.687	0.839	0.368
d15	<b>2008 Animal Incidence (%)</b>	<b>0.527</b>	0.675	0.165	0.342	0.325	0.894	0.190	0.272	0.723	0.802	0.390
d13	<b>2007 Animal Incidence (%)</b>	<b>0.445</b>	0.385	0.177	0.248	0.403	0.637	0.186	0.093	0.740	0.797	0.282

d14	<b>2006 Animal Incidence (%)</b>	<b>0.548</b>	0.496	0.170	0.279	0.459	0.934	0.205	0.230	0.862	1.000	0.304
d39	<b>2005 Animal Incidence (%)</b>	<b>0.590</b>	0.424	0.279	0.440	0.684	0.871	0.167	0.213	0.688	1.160	0.415
d31	<b>2004 Animal Incidence (%)</b>	<b>0.809</b>	0.453	0.381	0.598	0.907	1.551	0.406	0.108	0.842	1.380	0.600
d34	<b>APT during current month</b>	<b>2.90</b>	4.76	2.64	2.36	2.92	3.07	0.68	0.59	3.70	3.24	2.32
d22	<b>APT since start of year</b>	<b>2.86</b>	4.38	1.72	2.82	2.41	3.82	0.74	0.94	3.87	3.48	2.16
d17	<b>Current 12 month moving average APT</b>	<b>3.49</b>	4.95	1.42	2.67	2.28	5.67	1.51	1.92	4.41	4.56	2.41
d18	<b>2008 APT</b>	<b>3.54</b>	4.51	1.34	2.65	2.38	5.69	1.60	2.09	4.36	4.80	2.78
d19	<b>2007 APT</b>	<b>3.08</b>	2.49	1.44	1.94	2.88	4.24	1.56	0.77	4.69	4.95	2.20
d42	<b>2006 APT</b>	<b>3.49</b>	3.00	1.30	2.03	3.06	5.52	1.60	1.66	5.23	5.66	2.16
d40	<b>2005 APT</b>	<b>3.65</b>	2.58	2.01	2.86	4.28	5.44	1.25	1.67	4.08	6.28	2.73
d32	<b>2004 APT</b>	<b>4.86</b>	2.88	2.58	3.72	5.59	8.62	2.91	0.79	5.00	7.69	3.87
d23	<b>No. negative in contacts since start of year</b>	<b>128</b>	3	0	1	12	9	2	0	21	74	6
d24	<b>No. negative in contacts during 2008</b>	<b>611</b>	117	0	35	6	49	12	5	94	200	93
d25	<b>No. negative in contacts during 2007</b>	<b>589</b>	38	3	15	49	59	14	1	40	248	122
d43	<b>No. negative in contacts during 2006</b>	<b>689</b>	4	1	58	122	106	2	14	83	240	59
d41	<b>No. negative in contacts during 2005</b>	<b>1208</b>	25	8	93	48	377	5	7	12	584	49
d33	<b>No. negative in contacts during 2004</b>	<b>673</b>	37	26	18	15	191	2	1	140	187	56
d36	<b>Reactor removal time 2009</b>	<b>11.6</b>	13.0	8.9	8.9	9.6	9.6	9.6	8.2	12.3	12.3	8.9
d37	<b>Reactor removal time 2008</b>	<b>11.6</b>	12.3	8.9	8.9	9.6	9.6	9.6	8.2	12.3	12.3	8.2
d45	<b>Reactor removal time 2007</b>	<b>12.3</b>	12.3	12.3	11.0	12.3	8.9	13.0	8.9	13.0	13.0	8.9
d35	<b>Reactor removal time 2006</b>	<b>13.0</b>	12.3	9.6	11.6	13.7	11.6	13.0	10.3	13.7	13.7	9.6
D44	<b>Reactor removal time 2005</b>	<b>13.0</b>	10.3	13.0	13.0	13.0	13.0	14.4	13.0	15.8	12.3	11.6

### **Tuberculosis: number of reactor herds by month and by DVO in 2009 and unique herd breakdowns during the year**

2009	DVO_CODE											
Year	Month	Armagh	Ballymena	Coleraine	Dungannon	Enniskillen	Larne	L'Derry	Newry	Nt'Ards	Omagh	Total
2009	1	13	14	29	15	14	7	4	28	11	19	154
2009	2	8	5	15	12	14	9	5	19	8	19	114
2009	3	15	4	18	20	9	4	2	17	16	14	119
2009	4											0
2009	5											0
2009	6											0
2009	7											0
2009	8											0
2009	9											0
2009	10											0
2009	11											0
2008	12											0
<b>Total</b>		<b>36</b>	<b>23</b>	<b>62</b>	<b>47</b>	<b>37</b>	<b>20</b>	<b>11</b>	<b>64</b>	<b>35</b>	<b>52</b>	<b>387</b>

Unique Herd Breakdowns	DVO_CODE											
Year	Armagh	Ballymena	Coleraine	Dungannon	Enniskillen	Larne	L'Derry	Newry	Nt'Ards	Omagh	Total Herds	
2009	59	30	85	65	68	24	15	113	60	66	585	

### **Tuberculosis: number of reactor herds by month and by DVO in 2008 and unique herd breakdowns during the year**

2008	DVO_CODE											
Year	Month	Armagh	Ballymena	Coleraine	Dungannon	Enniskillen	Larne	L'Derry	Newry	Nt'Ards	Omagh	Total
2008	1	10	6	14	16	19	9	4	17	6	22	123
2008	2	11	4	15	16	19	7	3	28	15	23	141
2008	3	6	11	5	6	15	4	5	15	14	15	96
2008	4	7	7	12	12	20	4	2	26	14	17	121
2008	5	13	6	10	10	11	3	7	23	10	13	106
2008	6	4	2	6	2	13	1	6	19	11	8	72
2008	7	7	1	4	13	7	2	2	17	13	9	75
2008	8	4	1	7	8	13	4	2	25	17	8	89
2008	9	6	2	9	14	19	4	1	18	15	3	91
2008	10	7	4	12	10	26	3	4	22	11	9	108
2008	11	14	7	21	15	20	9	9	18	11	12	136
2008	12	6	6	15	14	20	11	4	14	13	12	115
<b>Total</b>		<b>95</b>	<b>57</b>	<b>130</b>	<b>136</b>	<b>202</b>	<b>61</b>	<b>49</b>	<b>242</b>	<b>150</b>	<b>151</b>	<b>1273</b>

Unique Herd Breakdowns	DVO_CODE											
Year	Armagh	Ballymena	Coleraine	Dungannon	Enniskillen	Larne	L'Derry	Newry	Nt'Ards	Omagh	Total Herds	
2008	128	66	158	167	248	67	56	315	215	178	1598	

### **Tuberculosis: number of reactor herds by month and by DVO in 2007 and unique herd breakdowns during the year**

2007	DVO_CODE											
Year	Month	Armagh	Ballymena	Coleraine	Dungannon	Enniskillen	Larne	L'Derry	Newry	Nt'Ards	Omagh	Total
2007	1	17	11	15	24	13	10	0	20	14	11	135
2007	2	12	10	14	12	17	5	7	15	13	19	124
2007	3	10	5	13	15	25	3	5	12	10	10	108
2007	4	14	6	4	11	12	4	4	19	8	15	97
2007	5	11	3	8	7	9	1	1	16	13	15	84
2007	6	9	2	7	13	8	4	0	15	9	3	70
2007	7	7	3	5	6	11	1	2	17	7	12	71
2007	8	9	6	12	6	16	3	0	19	14	6	91
2007	9	9	3	10	15	9	3	1	20	16	8	94
2007	10	13	6	4	10	14	0	1	18	18	13	97
2007	11	17	10	31	19	18	5	7	20	25	17	169
2007	12	9	7	12	14	9	7	5	16	20	25	124
<b>Total</b>		<b>137</b>	<b>72</b>	<b>135</b>	<b>152</b>	<b>161</b>	<b>46</b>	<b>33</b>	<b>207</b>	<b>167</b>	<b>154</b>	<b>1264</b>

Unique Herd Breakdowns	DVO_CODE											
Year	Armagh	Ballymena	Coleraine	Dungannon	Enniskillen	Larne	L'Derry	Newry	Nt'Ards	Omagh	Total Herds	
2007	181	82	169	196	221	57	35	277	239	176	1633	

**A herd is defined as being a TB reactor herd if it had at least one TB reactor animal in that month and no TB reactor animals during the previous 12 months.**

**A TB unique herd breakdown is defined as a herd which has had at least one TB reactor during the specified calendar year irrespective of any TB reactors during the previous calendar year.**

**Tuberculosis: number of reactor animals by month and by DVO 2009**

2009		DVO_CODE										
Year	Month	Armagh	Ballymena	Coleraine	Dungannon	Enniskillen	Larne	L'Derry	Newry	Nt'Ards	Omagh	Total
2009	1	125	47	98	80	124	9	15	194	96	58	846
2009	2	99	6	105	46	103	30	7	130	118	81	725
2009	3	133	38	67	74	66	12	5	120	92	59	666
2009	4											0
2009	5											0
2009	6											0
2009	7											0
2009	8											0
2009	9											0
2009	10											0
2009	11											0
2009	12											0
Total		357	91	270	200	293	51	27	444	306	198	2237

**Tuberculosis: number of reactor animals by month and by DVO 2008**

2008		DVO_CODE										
Year	Month	Armagh	Ballymena	Coleraine	Dungannon	Enniskillen	Larne	L'Derry	Newry	Nt'Ards	Omagh	Total
2008	1	77	26	65	86	124	15	19	80	104	96	692
2008	2	107	6	96	86	126	31	13	173	126	131	895
2008	3	42	38	62	42	60	9	8	99	173	84	617
2008	4	38	12	58	49	111	30	14	180	57	83	632
2008	5	49	25	38	32	79	27	10	98	192	70	620
2008	6	24	3	85	43	73	2	6	157	54	105	552
2008	7	79	3	12	48	119	10	12	114	135	57	589
2008	8	37	5	49	48	115	32	12	186	131	32	647
2008	9	87	4	22	61	140	10	3	71	144	9	551
2008	10	29	9	29	26	181	25	32	222	95	16	664
2008	11	304	31	99	44	221	34	36	144	116	39	1068
2008	12	267	14	82	66	150	26	7	105	62	84	863
Total		1140	176	697	631	1499	251	172	1629	1389	806	8390

**Tuberculosis: number of reactor animals by month and by DVO 2007**

2007		DVO_CODE										
Year	Month	Armagh	Ballymena	Coleraine	Dungannon	Enniskillen	Larne	L'Derry	Newry	Nt'Ards	Omagh	Total
2007	1	36	16	93	162	79	45	0	107	120	41	699
2007	2	82	14	67	83	114	29	11	122	92	50	664
2007	3	36	23	96	77	141	15	5	265	142	47	847
2007	4	71	24	20	76	45	60	5	175	76	48	600
2007	5	40	17	17	49	49	1	1	133	91	32	430
2007	6	30	2	12	72	78	12	0	74	74	32	386
2007	7	67	6	9	10	60	5	3	127	87	32	406
2007	8	137	31	39	42	102	26	3	127	98	34	639
2007	9	39	5	18	64	119	6	1	137	95	34	518
2007	10	41	8	6	18	96	2	4	150	151	54	530
2007	11	45	19	90	82	139	9	8	140	209	104	845
2007	12	42	38	67	69	87	44	17	112	189	70	735
Total		666	203	534	804	1109	254	58	1669	1424	578	7299

**A TB reactor animal is defined as an animal where the manual interpretation field for a skin test is positive ('P') with the first test date being taken as the time at which the animal became a reactor.  
Animals with lesions at routine slaughter ('LRS') are not taken into account.**

**Month = March 2009**

Ref.		<b>Total</b>	<b>Armagh</b>	<b>Ballymena</b>	<b>Coleraine</b>	<b>Dungannon</b>	<b>Enniskillen</b>	<b>Larne</b>	<b>L'derry</b>	<b>Newry</b>	<b>Nt'ards</b>	<b>Omagh</b>
b16	<b>No. herds with any test completed in month</b>	<b>3422</b>	<b>395</b>	<b>200</b>	<b>388</b>	<b>415</b>	<b>404</b>	<b>227</b>	<b>116</b>	<b>542</b>	<b>320</b>	<b>415</b>
b17	No. herds with any test, from start of year	11230	1161	675	1162	1312	1379	891	406	1881	934	1429
b29	All herds with any test, from start of year	11681	1208	704	1224	1367	1418	931	421	1953	984	1471
b18	No. herds with any test, from start of year (no cattle)	451	47	29	62	55	39	40	15	72	50	42
b19	<b>No. herds with herd test completed in month</b>	<b>2892</b>	<b>345</b>	<b>156</b>	<b>309</b>	<b>331</b>	<b>341</b>	<b>194</b>	<b>95</b>	<b>493</b>	<b>274</b>	<b>354</b>
b20	No. herds with herd test, from start of year	10204	1076	589	1008	1151	1276	798	370	1776	866	1294
b30	All herds with herd test, from start of year	10654	1123	618	1069	1206	1315	838	385	1849	915	1336
b21	No. herds with herd test, from start of year (no cattle)	450	47	29	61	55	39	40	15	73	49	42
b22	No. herds with herd test during last 12 months	23308	2244	1415	2584	2865	3091	1701	878	3622	1826	3082
b31	No. herds with herd test during last 13-24 months	23508	2260	1431	2614	2869	3093	1695	892	3653	1849	3152
b28	No. herds with herd test during 2008	22835	2227	1376	2527	2767	2995	1638	863	3585	1797	3060
b23	No. herds with herd test during 2007	23642	2253	1444	2664	2881	3119	1702	858	3690	1891	3140
b24	No. herds with herd test during 2006	24301	2369	1496	2706	2944	3173	1743	933	3766	1948	3223
b39	No. herds with herd test during 2005	24820	2430	1529	2826	3031	3204	1771	904	3840	2005	3280
b32	No. herds with herd test during 2004	25349	2468	1588	2877	3127	3277	1893	960	3833	2019	3307
b25	<b>No. herds with any risk test completed</b>	<b>4753</b>	<b>644</b>	<b>236</b>	<b>423</b>	<b>453</b>	<b>563</b>	<b>245</b>	<b>120</b>	<b>1159</b>	<b>425</b>	<b>485</b>
b26	<b>No. herds with herd risk test completed</b>	<b>3072</b>	<b>461</b>	<b>91</b>	<b>193</b>	<b>190</b>	<b>399</b>	<b>89</b>	<b>55</b>	<b>997</b>	<b>291</b>	<b>306</b>
b27	<b>No. herds with restricted herd test completed</b>	<b>1312</b>	<b>131</b>	<b>49</b>	<b>134</b>	<b>162</b>	<b>179</b>	<b>59</b>	<b>35</b>	<b>260</b>	<b>181</b>	<b>122</b>

**Month = March 2009**

Ref	Total	Armagh	Ballymena	Coleraine	Dungannon	Enniskillen	Larne	L'derry	Newry	Nt'ards	Omagh	
c1	<b>Total number of tests in current month</b>	<b>3883</b>	<b>453</b>	<b>214</b>	<b>426</b>	<b>507</b>	<b>435</b>	<b>253</b>	<b>133</b>	<b>601</b>	<b>381</b>	<b>480</b>
c2	Total number of tests from start of year	13699	1456	842	1441	1678	1664	1079	490	2185	1181	1683
c3	No. tests during the same time period in the previous year	12472	1371	780	1260	1403	1509	982	434	1847	1157	1729
c4	% change between years	9.0	5.8	7.4	12.6	16.4	9.3	9.0	11.4	15.5	2.0	-2.7
c5	No. tests in the previous 12 months	42849	4613	2312	4487	5084	5465	2772	1472	7504	3850	5290
c6	<b>No. animal tests in current month</b>	<b>229985</b>	<b>27970</b>	<b>14377</b>	<b>28402</b>	<b>25383</b>	<b>21519</b>	<b>17550</b>	<b>8409</b>	<b>32452</b>	<b>28438</b>	<b>25485</b>
c7	No. animal tests from start of year	782051	81588	52780	95800	83012	76789	68997	28792	114650	87937	91706
c8	No. animal tests during the same time period in the previous year	737648	77644	45731	80232	77275	78928	62893	28568	97919	94077	94381
c9	% change between years	5.7	4.8	13.4	16.3	6.9	-2.8	8.8	0.8	14.6	-7.0	-2.9
c10	No. animal tests in previous 12 months	2413267	256789	138573	278478	270890	261190	163589	82649	389969	283497	287643
c11	No. cattle eligible for TB testing	1636286	156769	115713	213427	191351	165963	141598	64747	210748	168247	207723
c12	No. cattle herds eligible for TB testing	26638	2826	1624	2964	3223	3391	1971	1042	4120	2151	3526
c13	<b>No. restricted herd tests during month</b>	<b>455</b>	<b>39</b>	<b>23</b>	<b>55</b>	<b>54</b>	<b>65</b>	<b>19</b>	<b>14</b>	<b>81</b>	<b>65</b>	<b>40</b>
c14	No. animals tested	66589	7517	4088	9882	9170	7253	2375	1189	10258	10581	4276
c15	<b>No. herd tests during month</b>	<b>2892</b>	<b>345</b>	<b>156</b>	<b>309</b>	<b>331</b>	<b>341</b>	<b>194</b>	<b>95</b>	<b>493</b>	<b>274</b>	<b>354</b>
c16	No. animals tested	226779	27701	14225	27858	24837	21195	17434	8349	31804	28193	25183
c17	<b>No. individual tests during month</b>	<b>991</b>	<b>108</b>	<b>58</b>	<b>117</b>	<b>176</b>	<b>94</b>	<b>59</b>	<b>38</b>	<b>108</b>	<b>107</b>	<b>126</b>
c18	No. animals tested	3206	269	152	544	546	324	116	60	648	245	302
c23	<b>No. animals TB tested since start of year</b>	<b>741052</b>	<b>77891</b>	<b>49677</b>	<b>89741</b>	<b>79658</b>	<b>71010</b>	<b>67064</b>	<b>28016</b>	<b>110718</b>	<b>81494</b>	<b>88684</b>
c19	No. animals TB tested in previous 12 months	1622666	171192	110978	210716	199049	167490	137344	62373	227995	173464	208891
c24	No. animals TB tested in previous 13-24 months	1626157	172366	112323	209456	197324	171748	135484	64746	222242	175529	204304
c22	No. animals TB tested in 2008	1592213	168975	106901	203946	194354	167758	132365	63158	225195	173195	206851
c20	No. animals TB tested in 2007	1640552	172852	114560	215201	199652	174151	136324	62184	225462	178638	205208
c21	No. animals TB tested in 2006	1711870	182776	120699	220008	210854	182488	144582	69516	234093	185689	215645
c26	No. animals TB tested in 2005	1776064	183292	125632	237269	222514	184630	151248	66659	234585	191843	226983
c25	No. animals TB tested in 2004	1865762	185178	134129	249856	240990	198531	162067	76106	239332	202259	238461

## Explanatory Comments for Tuberculosis Statistics - B. Testing Herds

B16	No. herds with any test completed in month	Test of any disease status and size (herd or animal-level). Tests with no animals are excluded.
B17	No. herds with any test, from start of year	<b>Test of any disease status and size (herd or animal-level) carried out on a herd since 1st January. Tests with no animals are excluded.</b>
B29	All herds with any test, from start of year	Skin test of any disease status and size (herd or animal-level) carried out on a herd since 1st January. Tests with no animals are included.
B18	No. herds with any test, from start of year (no cattle)	Herd or individual test of any disease status (routine, risk or restricted) where no cattle were recorded at all such tests since 1st January
B19	No. herds with herd test completed in month	Herd level test of any disease status (routine, risk or restricted) completed during the above month. Tests with no animals are excluded.
B20	No. herds with herd test, from start of year	<b>Herd level test of any disease status (routine, risk or restricted) completed since 1st January. Tests with no animals are excluded.</b>
B30	All herds with herd test, from start of year	Herd level test of any disease status (routine, risk or restricted) completed since 1st January. Tests with no animals are included.
B21	No. herds with herd test, from start of year (no cattle)	Herd level test of any disease status (routine, risk or restricted) where no cattle were recorded at all such herd tests since 1st January.
B22	No. herds with herd test during last 12 months	Herd level test of any disease status (routine, risk or restricted) completed in the 12 month period from the above month. Tests with no animals are excluded.
B31	No. herds with herd test during last 13-24 months	Herd level test of any disease status (routine, risk or restricted) completed in the 13-24 months from the above month. Tests with no animals are excluded.
B39	No. herds with herd test during 2005	Herd level test of any disease status (routine, risk or restricted) completed in the calendar year. Tests with no animals are excluded.
B32	No. herds with herd test during 2004	Herd level test of any disease status (routine, risk or restricted) completed in the calendar year. Tests with no animals are excluded.
B28	No. herds with herd test during 2008	Herd level test of any disease status (routine, risk or restricted) completed in the calendar year. Tests with no animals are excluded.
B23	No. herds with herd test during 2007	Herd level test of any disease status (routine, risk or restricted) completed in the calendar year. Tests with no animals are excluded.
B24	No. herds with herd test during 2006	Herd level test of any disease status (routine, risk or restricted) completed in the calendar year. Tests with no animals are excluded.
B25	No. herds with any risk test completed	Herd has had a herd or individual level risk test since start of calendar year and number tested > 0
B26	No. herds with herd risk test completed	Herd has had a herd level risk test since start of calendar year and number tested > 0.
B27	No. herds with restricted herd test completed	Herd has had a restricted herd test (RHT, RH1, RH2) since start of calendar year and number tested

#### Explanatory Comments for Tuberculosis Statistics - C. Testing Animals

Ref	Data Title	Explanation
C1	Total number of tests in current month	Number of herds and individual tests performed in the month stated above. Tests with no animals are excluded
C2	Total number of tests from start of year	<b>From 1st January. Tests with no animals are excluded.</b>
C3	No. tests during the same time period in the previous year	From 1st January of previous year. Tests with no animals are excluded.
C4	% change between years	<b>Difference between the number of tests carried out during the current year and the number carried out in the previous expressed as a percentage.</b>
C5	No. tests in the previous 12 months	Last 12 month period from the above month. Tests with no animals are excluded.
C6	No. animal tests in current month	Animal test = a count of the number of animals tested within each herd or individual test. Some animals may have been tested multiple times during the year.
C7	No. animal tests from start of year	Number of animal tests carried out since 1st January.
C8	No. animal tests during the same time period in the previous year	Number of animal tests carried out from 1st January in the previous year over the same time interval as recorded for the current year.
C9	% change between years	Difference between the number of animal tests during the current year and the number carried out in the previous expressed as a percentage.
C10	No. animal tests in previous 12 months	Last 12 month period from the above month.
C11	No. cattle eligible for TB testing	Based on the average number of animals presented at TB herd tests over last 4 years.
C12	No. cattle herds eligible for TB testing	Based on cattle being presented for a TB herd tests over last 4 years. Herds with '0' cattle are excluded.
C13	No. restricted herd tests during month	All restricted herd tests (RHT, RH1 and RH2) carried out during the above month.
C14	No. animals tested	Total of the animals reported as being tested within restricted herd tests (RHT, RH1, RH2) during the above month.
C15	No. herd tests during month	Total of the animals reported as being tested within all herd tests during the above month.
C16	No. animals tested	Total of the animals reported as being tested within all herd tests during the above month.
C17	No. individual tests during month	Total of the animals reported as being tested within all individual tests during the above month.
C18	No. animals tested	Total of the animals reported as being tested within all individual tests during the above month.
C23	No. animals TB tested since start of year	Animals identified as having had at least one TB skin test since the start of the calendar year. Due to the same animals being sampled in different DVO areas, the 'Total' is not the sum of the DVO figures.
C19	No. animals TB tested in previous 12 months	Animals identified as having had at least one TB skin test during the last 12 month period from the above month. Due to the same animals being sampled in different DVO areas, the 'Total' is not the sum of the DVO figures.
C24	No. animals TB tested in previous 13-24 months	Animals identified as having had at least one TB skin test during the last 13-24 months from the above month. Due to the same animals being sampled in different DVO areas, the 'Total' is not the sum of the DVO figures.
C26	No. animals TB tested in 2005	Animals identified as having had at least one TB skin test during the calendar year. Due to the same animals being sampled in different DVO areas, the 'Total' is not the sum of the DVO figures.
C25	No. animals TB tested in 2004	Animals identified as having had at least one TB skin test during the calendar year. Due to the same animals being sampled in different DVO areas, the 'Total' is not the sum of the DVO figures.
C22	No. animals TB tested in 2008	Animals identified as having had at least one TB skin test during the calendar year. Due to the same animals being sampled in different DVO areas, the 'Total' is not the sum of the DVO figures.
C20	No. animals TB tested in 2007	Animals identified as having had at least one TB skin test during the calendar year. Due to the same animals being sampled in different DVO areas, the 'Total' is not the sum of the DVO figures.
C21	No. animals TB tested in 2006	Animals identified as having had at least one TB skin test during the calendar year. Due to the same animals being sampled in different DVO areas, the 'Total' is not the sum of the DVO figures.

### Explanatory Comments for Tuberculosis Statistics - D. Results

Ref	Data Title	Explanation
D1	No. of herds with TB reactors during month	A herd is included in this figure if the herd number had a TB skin test reactor during the above month.
D2	No. of new reactor herds during month	A herd is defined as being a TB reactor herd if it had at least one TB reactor animal in that month and no TB reactor animals during the previous 12 months.
D3	No. of new reactor herds since start of year	= Since 1st January
D4	No. of new reactor herds in the previous 12 months	Last 12 month period from the above month.
D26	No. of new reactor herds in previous 13-24 months	Last 13-24 month period from the above month.
D5	No. of TB reactor animals during month	A TB reactor animal is defined as an animal where the manual interpretation field for a skin test is positive ('P') with the first test date being taken as the time at which the animal became a reactor. Currently animals with lesions at routine slaughter (*LRS*) are not taken into account
D6	No. of TB reactor animals since start of year	= Since 1st January
D7	No. of reactor animals in the previous 12 months	Last 12 month period from the above month.
D27	No. of reactor animals in previous 13-24 months	Last 13-24 month period from the above month.
D8	Herd Prevalence (%)	Number of herds with a TB reactor during the above month as a proportion of cattle herds which have presented cattle for a TB herd test during the same time period.
D20	Cumulative herd incidence in year (%)	Number of NEW reactor herds since the start of the calendar year as a proportion of cattle herds which have presented cattle for a TB herd test during the same time period.
D9	Annual herd incidence over the last 12 months (%)	Number of NEW reactor herds during the last 12 months as a proportion of cattle herds which have presented cattle for a TB herd test during the same time period.
D28	Annual herd incidence over the last 13-24 months (%)	Number of NEW reactor herds during the last 13-24 months as a proportion of cattle herds which have presented cattle for a TB herd test during the same time period.
D38	2005 Herd Incidence (%)	Number of NEW reactor herds during the year as a proportion of cattle herds which have presented cattle for a TB herd test during the same time period.
D30	2004 Herd Incidence (%)	Number of NEW reactor herds during the year as a proportion of cattle herds which have presented cattle for a TB herd test during the same time period.
D16	2008 Herd Incidence (%)	Number of NEW reactor herds during the year as a proportion of cattle herds which have presented cattle for a TB herd test during the same time period.
D10	2007 Herd Incidence (%)	Number of NEW reactor herds during the year as a proportion of cattle herds which have presented cattle for a TB herd test during the same time period.
D11	2006 Herd Incidence (%)	Number of NEW reactor herds during the year as a proportion of cattle herds which have presented cattle for a TB herd test during the same time period.
D21	Cumulative animal incidence in year (%)	Number of reactor animals during the above month as a proportion of cattle which have been presented for a TB test during the same time period.
D12	Annual animal incidence over the last 12 months (%)	Number of reactor animals during the last 12 months as a proportion of cattle which have been presented for a TB test during the same time period.
D29	Annual animal incidence over the last 13-24 months (%)	Number of reactor animals during the last 13-24 months as a proportion of cattle which have been presented for a TB test during the same time period.
D39	2005 Animal Incidence (%)	Number of reactor animals during the year as a proportion of cattle which have been presented for a TB herd test during the same time period.
D31	2004 Animal Incidence (%)	Number of reactor animals during the year as a proportion of cattle which have been presented for a TB herd test during the same time period.
D15	2008 Animal Incidence (%)	Number of reactor animals during the year as a proportion of cattle which have been presented for a TB herd test during the same time period.
D13	2007 Animal Incidence (%)	Number of reactor animals during the year as a proportion of cattle which have been presented for a TB herd test during the same time period.
D14	2006 Animal Incidence (%)	Number of reactor animals during 2006 as a proportion of cattle which have been presented for a TB herd test during the same time period.

D34	APT during current month	= The reactor disclosure rate per 1,000 animal tests current calendar month.
D22	APT since start of year	The reactor disclosure rate per 1,000 animal tests since the start of the calendar year.
D17	Current 12 month moving average APT	The reactor disclosure rate per 1,000 animal tests. Current refers to the rate over the last 12 months.
D42	2006 APT	The reactor disclosure rate per 1,000 animal tests during the calendar year.
D40	2005 APT	The reactor disclosure rate per 1,000 animal tests during the calendar year.
D32	2004 APT	The reactor disclosure rate per 1,000 animal tests during the calendar year.
D18	2008 APT	The reactor disclosure rate per 1,000 animal tests during the calendar year.
D19	2007 APT	The reactor disclosure rate per 1,000 animal tests during the calendar year.
D23	No. negative in contacts since start of year	Number of animals taken as negative in contacts since the start of the year
D43	No. negative in contacts during 2006	Number of animals taken as negative in contacts during the year
D41	No. negative in contacts during 2005	Number of animals taken as negative in contacts during the year
D33	No. negative in contacts during 2004	Number of animals taken as negative in contacts during the year
D24	No. negative in contacts during 2008	Number of animals taken as negative in contacts during the year
D25	No. negative in contacts during 2007	Number of animals taken as negative in contacts during the year
D37	Reactor removal time 2008	Figures given are median values for working days estimated from calendar days (calendar days multiplied by 0.685). Reactors which are not yet slaughtered or where they they were first declared as reactors at slaughter are excluded.
D45	Reactor removal time 2007	Figures given are median values for working days estimated from calendar days (calendar days multiplied by 0.685). Reactors which are not yet slaughtered or where they they were first declared as reactors at slaughter are excluded.
D35	Reactor removal time 2006	Figures given are median values for working days estimated from calendar days (calendar days multiplied by 0.685). Reactors which are not yet slaughtered or where they they were first declared as reactors at slaughter are excluded.
D44	Reactor removal time 2005	Figures given are median values for working days estimated from calendar days (calendar days multiplied by 0.685). Reactors which are not yet slaughtered or where they they were first declared as reactors at slaughter are excluded.
D36	Reactor removal time 2009	Figures given are median values for working days estimated from calendar days (calendar days multiplied by 0.685). Reactors which are not yet slaughtered or where they they were first declared as reactors at slaughter are excluded.