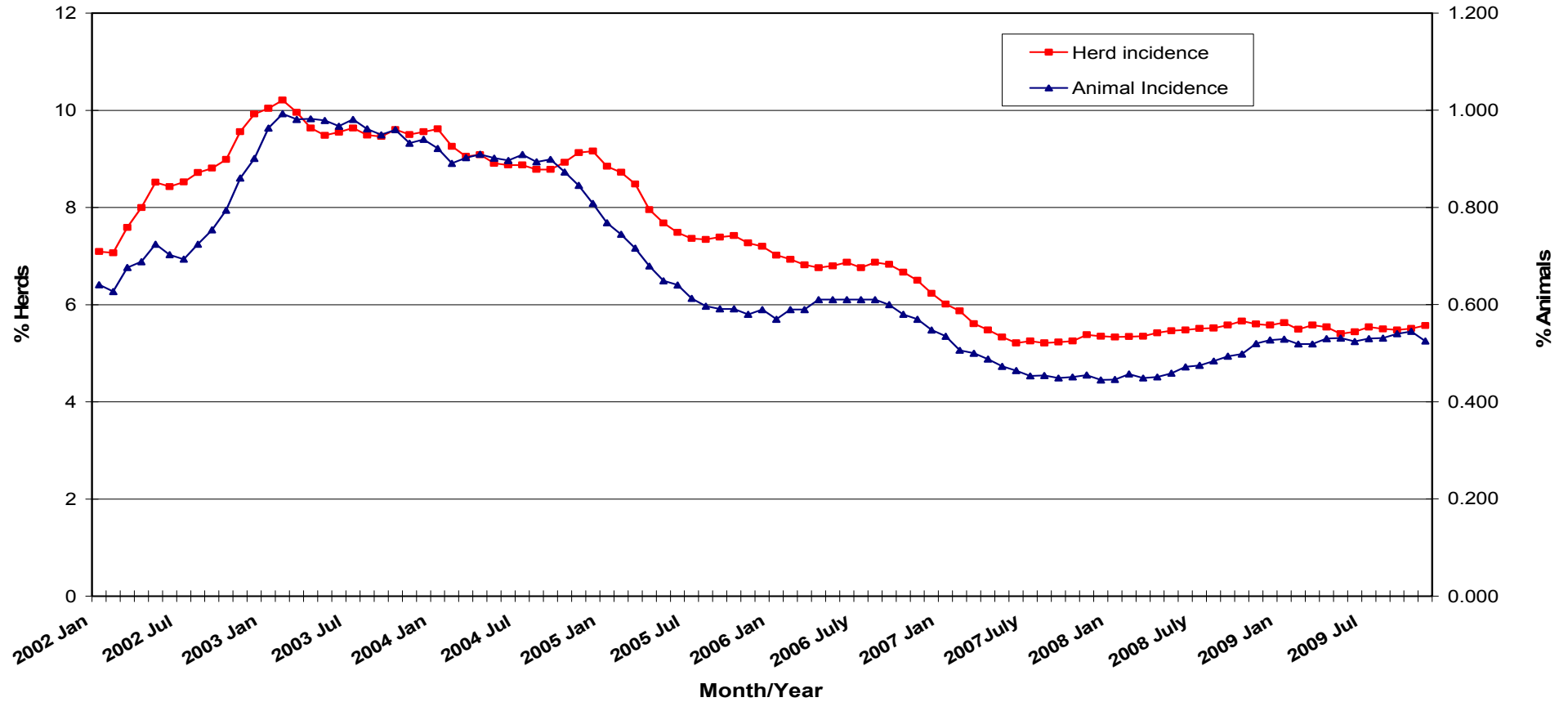
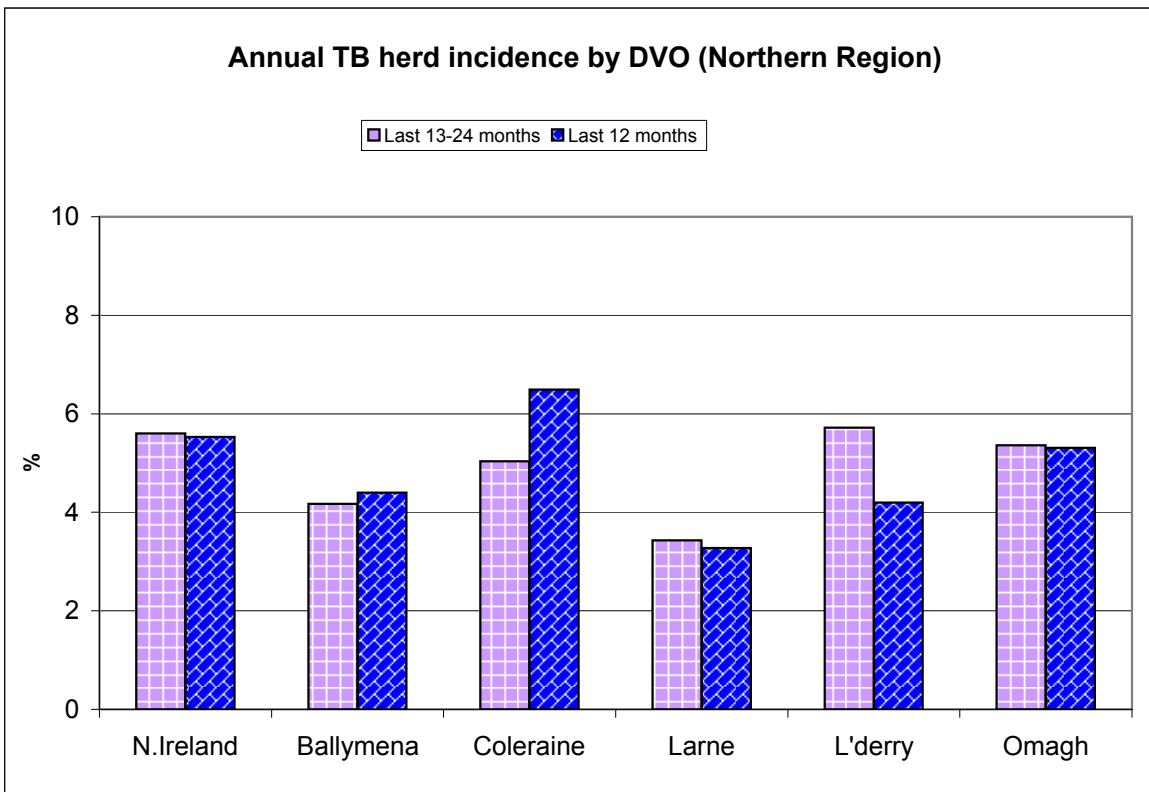
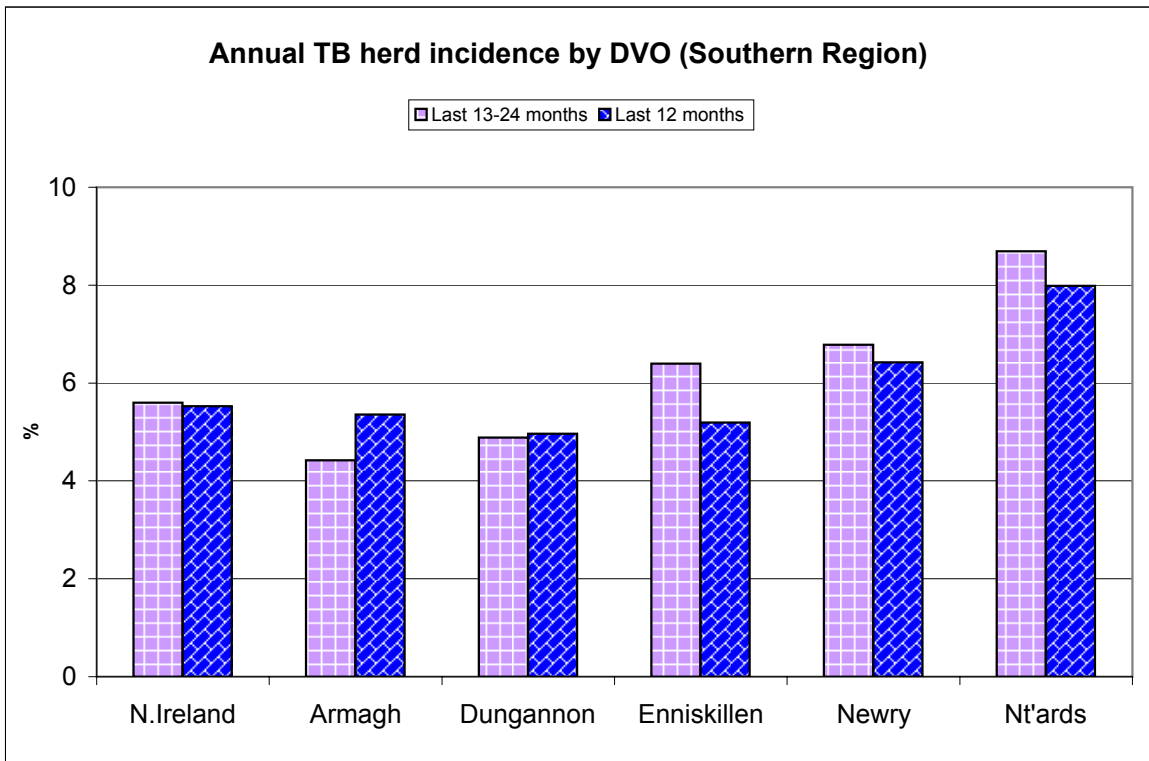


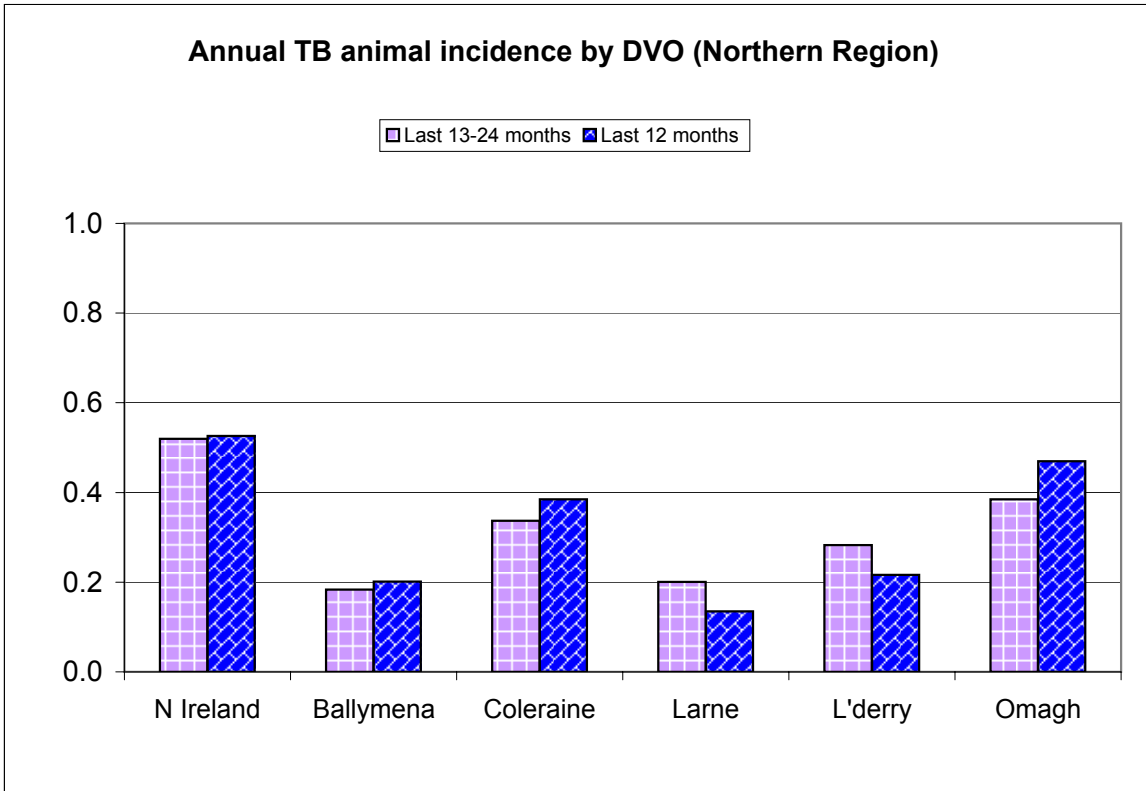
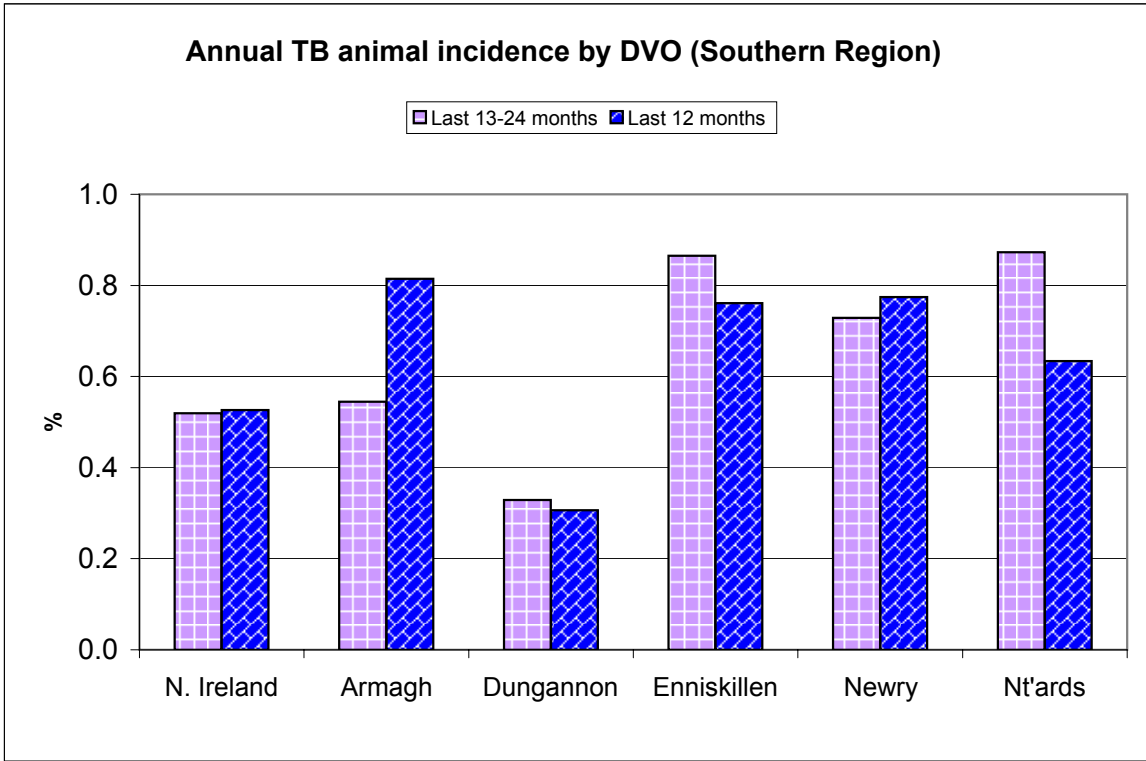
Tuberculosis: Statistics for November 2009

Tests Completed	Herds	Number of herds tested (any test), by DVO	Cumulative Statistics	
		Number of herds with herd-level test, by DVO	Cumulative Statistics	
		Number of herds with any risk test, by DVO		
		Number of herds with herd-level risk test, by DVO		
		Number of herds with herd-level restricted test, by DVO		
	Animals	Total number of tests performed, by DVO	Cumulative Statistics	
		Total number of animals tests, by DVO	Cumulative Statistics	
		Total number of restricted herd tests, by DVO	Number of animals tested	
		Total number of herd tests, by DVO	Number of animals tested	
		Total number of individual tests, by DVO	Number of animals tested	
Total number of animals tested, by DVO				
Summary Statistics	Herds with TB reactors during month, by DVO	Cumulative Statistics	APT	
	Number of new reactor herds, by DVO	Cumulative Statistics	Negative-in-contacts	
	Number of new reactor animals, by DVO		Reactor removal times	
	Herd Prevalance			
	Herd Incidence			
	Animal Incidence			
	Number of reactor animals by month and by DVO			
	Number of new reactor herds by month and by DVO			
	Total number of all reactor herds by DVO			
Summary Charts	Current Animal Incidence Chart	Monthly TB reactors chart		
	Yearly Animal Incidence Chart	New TB reactor herds		
	Current Herd Incidence Chart	TB Herd & Animal Incidence		
	Yearly Herd Incidence Chart			

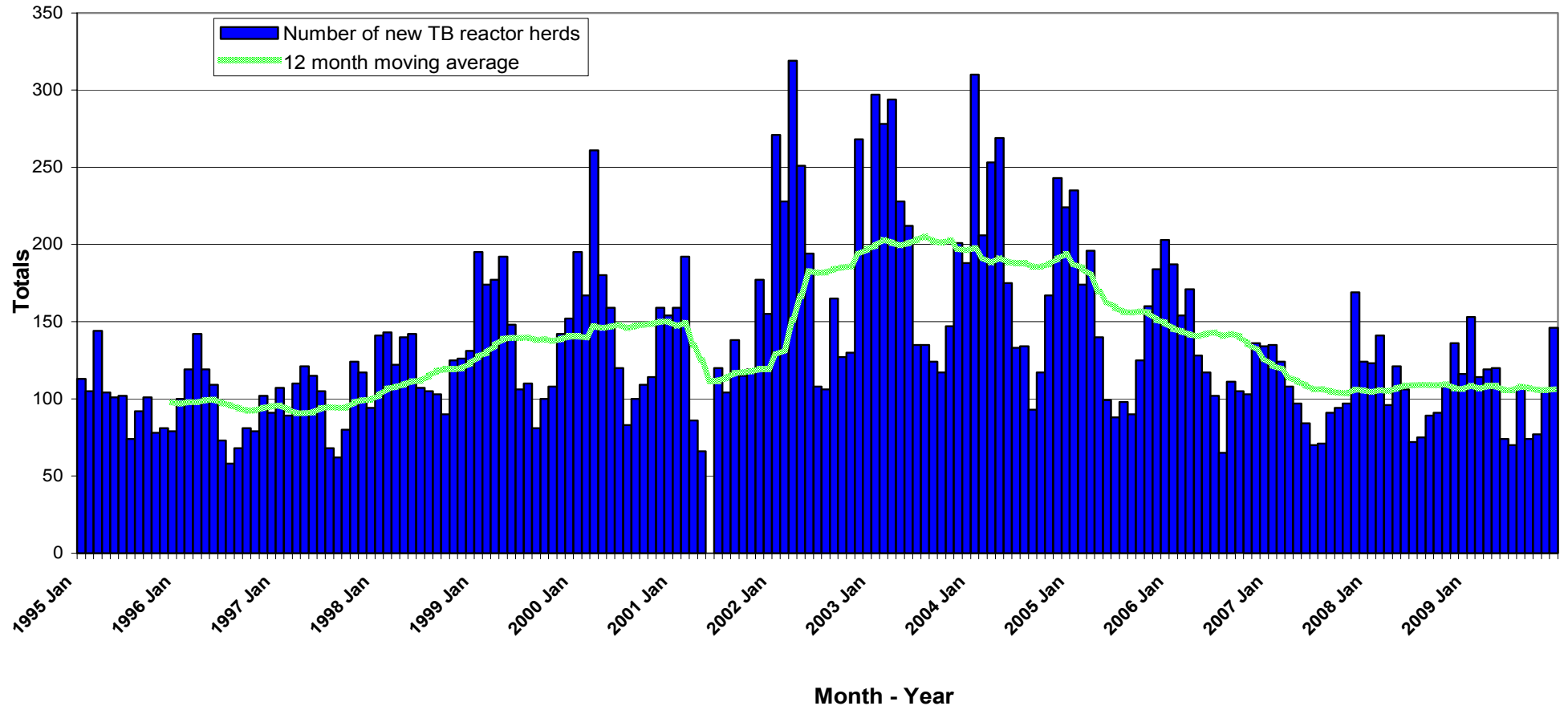
**TB Herd and Animal Incidence:
(12 month moving average: January 2002 to November 2009)**



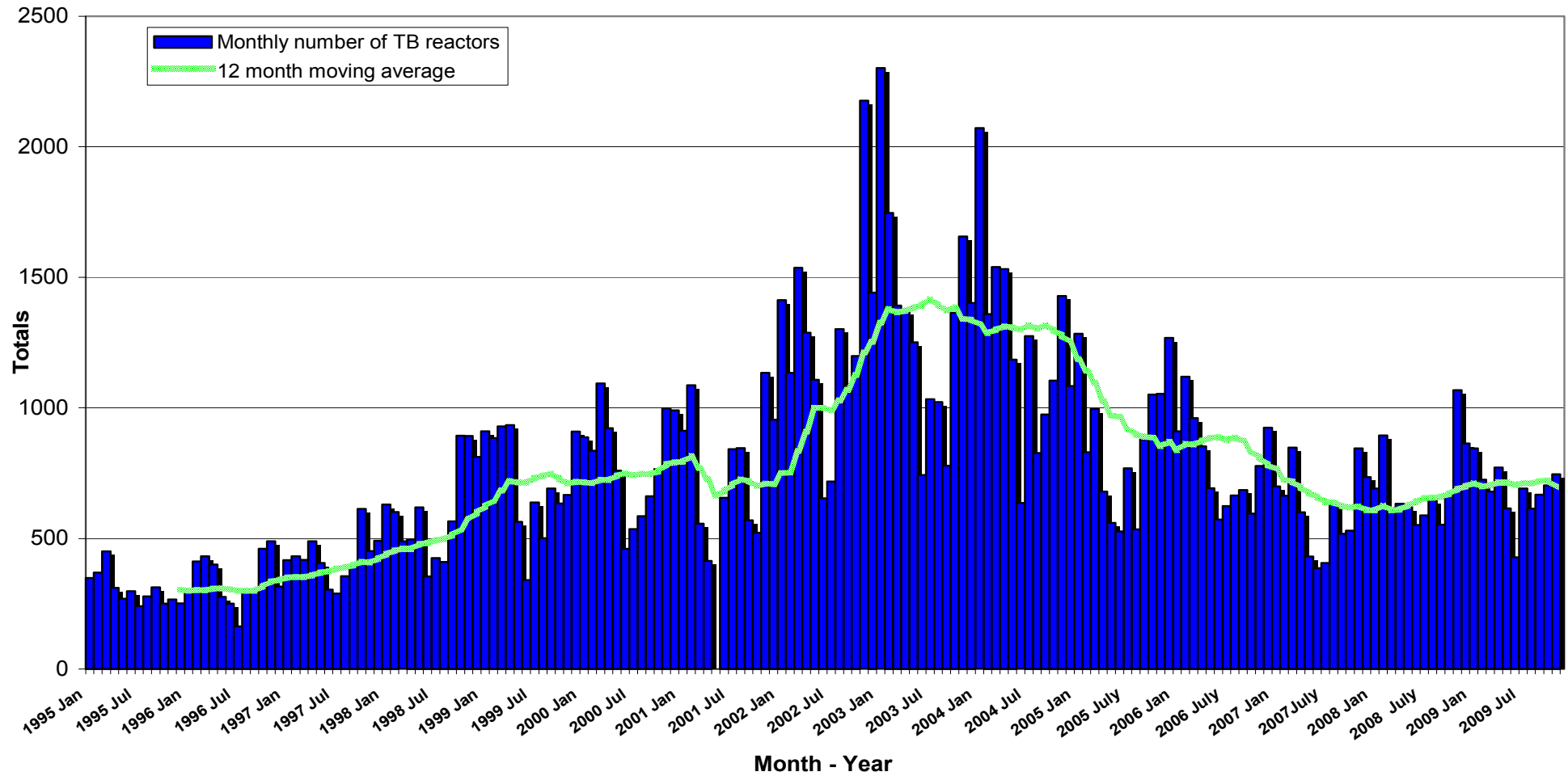


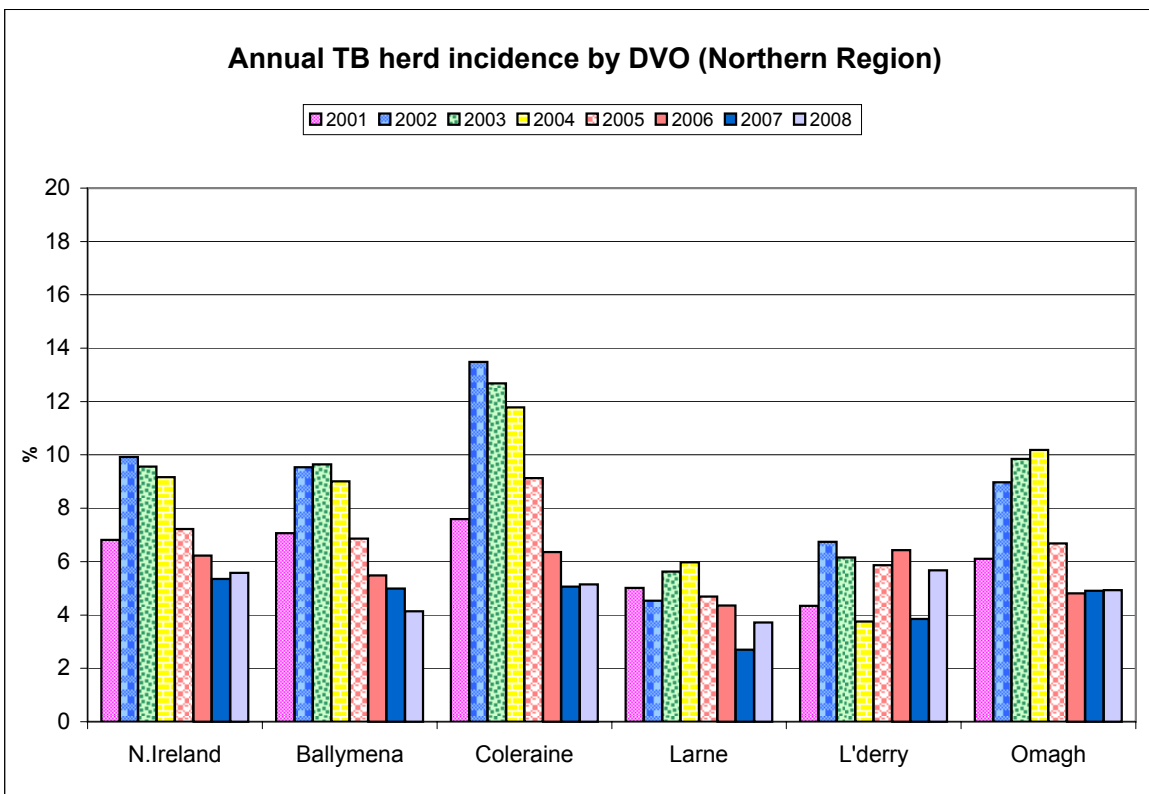
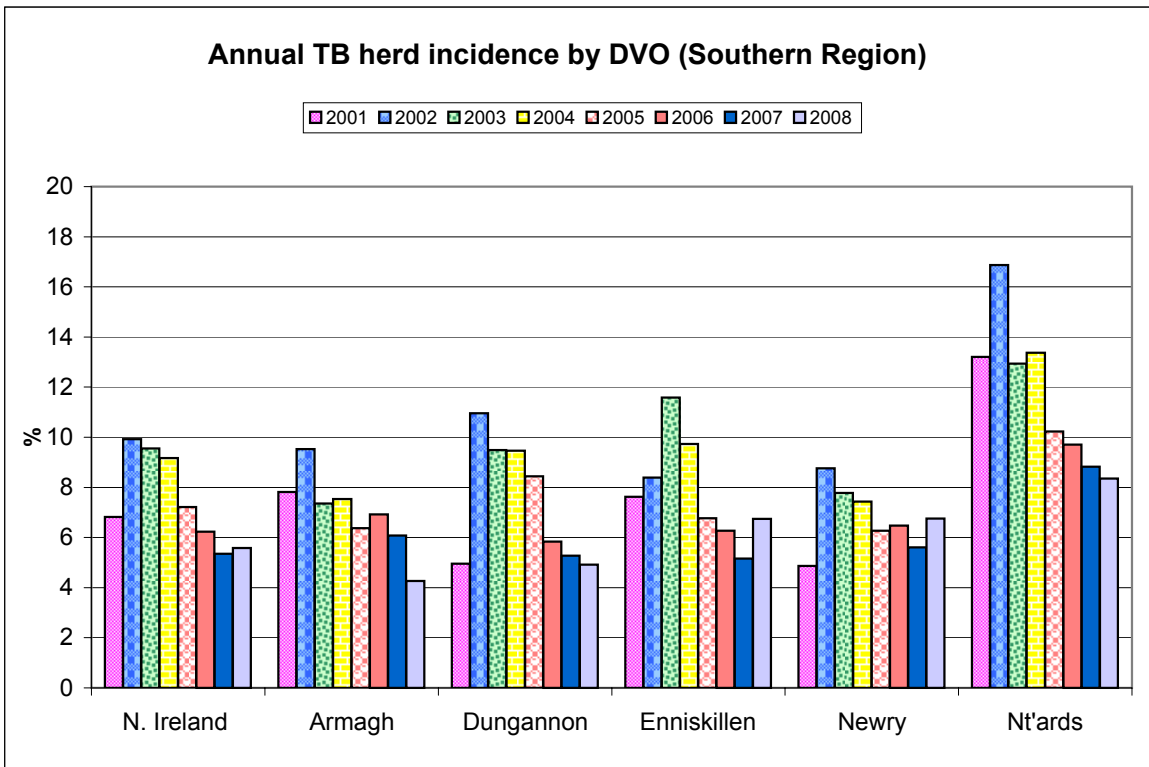


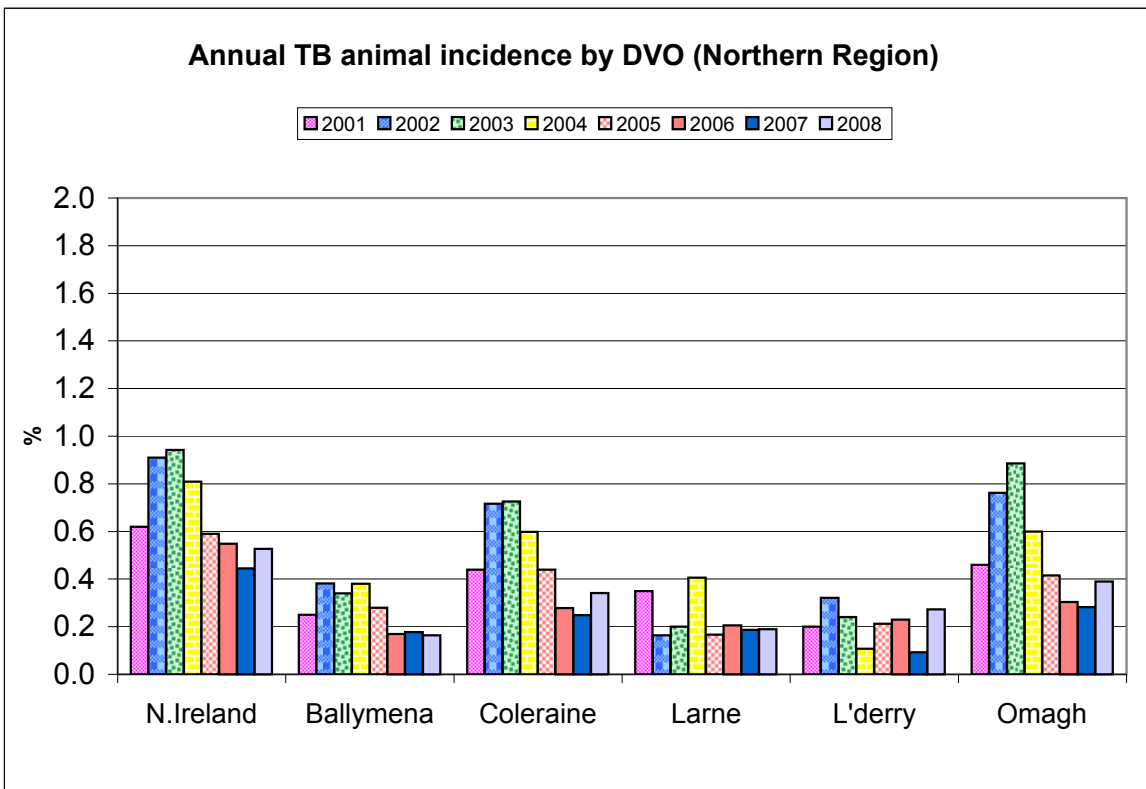
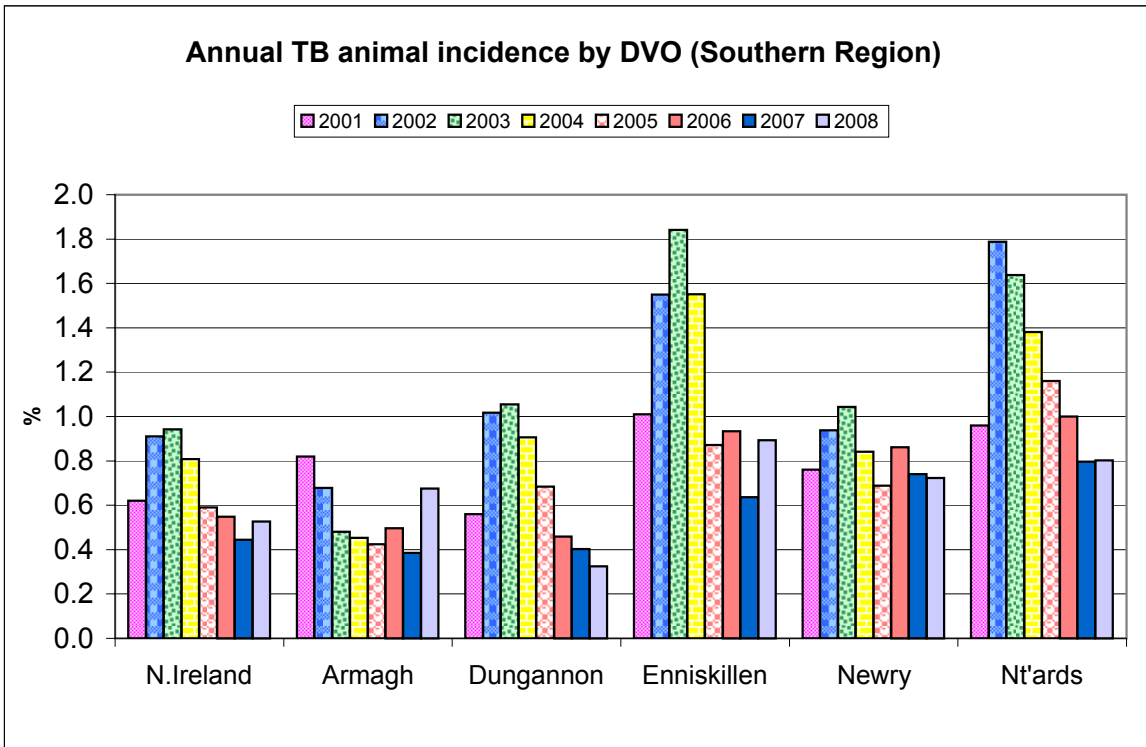
New TB Reactor Herds: January 1995 to November 2009



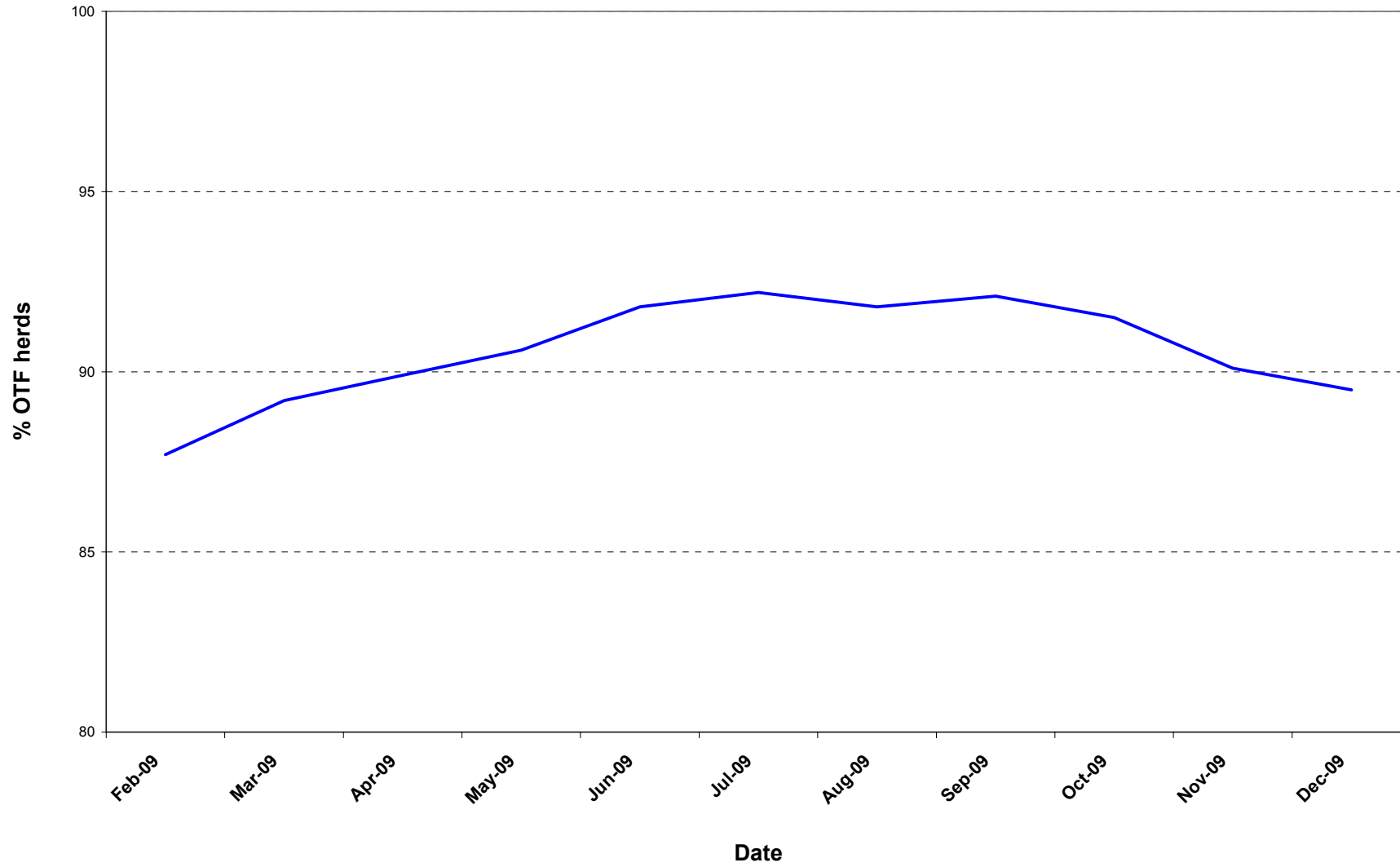
TB Reactors: January 1995 to November 2009







% of operational herds that are officially tuberculosis free (OTF herds)



Month = November 2009

Ref.	Total	Armagh	Ballymena	Coleraine	Dungannon	Enniskillen	Larne	L'derry	Newry	Nt'ards	Omagh	
d1	No. of herds with TB reactors during month	212	21	9	26	20	26	9	7	32	31	31
d2	No. of new reactor herds during month	135	9	8	17	9	18	8	6	19	17	24
d3	No. of new reactor herds since start of year	1151	113	54	149	126	138	43	32	218	130	148
d4	No. of new reactor herds in the previous 12 months	1266	119	60	164	140	158	54	36	232	143	160
d26	No. of new reactor herds in the previous 13-24 months	1282	98	58	127	136	191	57	50	244	157	164
d5	No. of TB reactor animals during month	746	57	20	78	43	91	50	10	107	156	134
d6	No. of TB reactor animals since start of year	7490	1116	206	730	538	1093	153	121	1662	1009	862
d7	No. of reactor animals in the previous 12 months	8353	1383	220	812	604	1243	179	128	1767	1071	946
d27	No. of reactor animals in the previous 13-24 months	8262	915	200	682	634	1436	269	182	1636	1516	792
d8	Herd Prevalence (%)	5.94	6.12	4.02	6.79	5.19	5.38	3.26	5.83	5.57	10.76	6.30
d20	Cumulative herd incidence in year (%)	5.35	5.09	3.96	5.90	4.47	4.54	2.61	3.73	6.03	7.26	4.91
d9	Annual herd incidence over the last 12 months (%)	5.53	5.36	4.40	6.49	4.97	5.20	3.28	4.20	6.42	7.99	5.31
d28	Annual herd incidence over the last 13-24 months (%)	5.60	4.42	4.17	5.04	4.89	6.39	3.43	5.72	6.79	8.69	5.36
d16	2008 Herd Incidence (%)	5.57	4.27	4.14	5.14	4.92	6.74	3.72	5.68	6.75	8.35	4.93
d10	2007 Herd Incidence (%)	5.35	6.08	4.99	5.07	5.28	5.16	2.70	3.85	5.61	8.83	4.90
d11	2006 Herd Incidence (%)	6.23	6.92	5.48	6.36	5.84	6.27	4.36	6.43	6.48	9.70	4.81
d38	2005 Herd Incidence (%)	7.22	6.38	6.87	9.13	8.45	6.77	4.69	5.86	6.28	10.22	6.68
d30	2004 Herd Incidence (%)	9.17	7.54	9.01	11.78	9.47	9.73	5.97	3.75	7.44	13.37	10.19
d21	Cumulative animal incidence in year (%)	0.509	0.702	0.210	0.379	0.294	0.723	0.134	0.223	0.758	0.632	0.468
d12	Annual animal incidence over the last 12 months (%)	0.526	0.814	0.201	0.385	0.306	0.761	0.135	0.217	0.774	0.634	0.470
d29	Annual animal incidence over the last 13-24 months (%)	0.520	0.545	0.183	0.337	0.329	0.865	0.201	0.283	0.729	0.873	0.385
d15	2008 Animal Incidence (%)	0.527	0.675	0.165	0.342	0.325	0.894	0.190	0.272	0.723	0.802	0.390
d13	2007 Animal Incidence (%)	0.445	0.385	0.177	0.248	0.403	0.637	0.186	0.093	0.740	0.797	0.282

d14	2006 Animal Incidence (%)	0.548	0.496	0.170	0.279	0.459	0.934	0.205	0.230	0.862	1.000	0.304
d39	2005 Animal Incidence (%)	0.590	0.424	0.279	0.440	0.684	0.871	0.167	0.213	0.688	1.160	0.415
d31	2004 Animal Incidence (%)	0.809	0.453	0.381	0.598	0.907	1.551	0.406	0.108	0.842	1.380	0.600
d34	APT during current month	2.67	2.05	1.02	1.93	1.40	3.04	2.26	1.14	2.93	5.57	3.79
d22	APT since start of year	3.48	4.71	1.65	2.80	2.25	4.77	1.16	1.77	4.48	4.17	3.50
d17	Current 12 month moving average APT	3.50	5.31	1.56	2.80	2.28	4.87	1.15	1.71	4.38	4.03	3.44
d18	2008 APT	3.54	4.51	1.34	2.65	2.38	5.69	1.60	2.09	4.36	4.80	2.78
d19	2007 APT	3.08	2.49	1.44	1.94	2.88	4.24	1.56	0.77	4.69	4.95	2.20
d42	2006 APT	3.49	3.00	1.30	2.03	3.06	5.52	1.60	1.66	5.23	5.66	2.16
d40	2005 APT	3.65	2.58	2.01	2.86	4.28	5.44	1.25	1.67	4.08	6.28	2.73
d32	2004 APT	4.86	2.88	2.58	3.72	5.59	8.62	2.91	0.79	5.00	7.69	3.87
d23	No. negative in contacts since start of year	651	85	1	1	152	60	5	0	132	111	104
d46	No. Negative in contacts over last 12 months	675	93	1	2	152	60	6	0	136	112	113
d24	No. negative in contacts during 2008	611	117	0	35	6	49	12	5	94	200	93
d25	No. negative in contacts during 2007	589	38	3	15	49	59	14	1	40	248	122
d43	No. negative in contacts during 2006	689	4	1	58	122	106	2	14	83	240	59
d41	No. negative in contacts during 2005	1208	25	8	93	48	377	5	7	12	584	49
d33	No. negative in contacts during 2004	673	37	26	18	15	191	2	1	140	187	56
d36	Reactor removal time 2009	12.3	14.4	8.9	8.9	8.9	12.3	13.0	8.2	12.3	13.0	9.6
d37	Reactor removal time 2008	11.6	12.3	8.9	8.9	9.6	9.6	9.6	8.2	12.3	12.3	8.2
d45	Reactor removal time 2007	12.3	12.3	12.3	11.0	12.3	8.9	13.0	8.9	13.0	13.0	8.9
d35	Reactor removal time 2006	13.0	12.3	9.6	11.6	13.7	11.6	13.0	10.3	13.7	13.7	9.6
D44	Reactor removal time 2005	13.0	10.3	13.0	13.0	13.0	13.0	14.4	13.0	15.8	12.3	11.6

Tuberculosis: number of reactor herds by month and by DVO in 2009 and unique herd breakdowns during the year

2009		DVO_CODE										
Year	Month	Armagh	Ballymena	Coleraine	Dungannon	Enniskillen	Larne	L'Derry	Newry	Nt'Ards	Omagh	Total
2009	1	13	14	29	15	14	7	4	28	11	19	154
2009	2	8	5	15	12	14	9	5	19	8	19	114
2009	3	15	4	18	20	9	4	2	17	16	14	119
2009	4	12	6	16	12	19	3	5	22	7	18	120
2009	5	13	2	14	6	8	1	2	8	15	5	74
2009	6	9	4	9	8	2	2	0	21	8	7	70
2009	7	12	3	8	6	19	3	3	24	17	13	108
2009	8	11	3	7	8	15	0	2	16	7	5	74
2009	9	7	2	10	15	7	1	2	15	14	5	78
2009	10	4	3	6	15	13	5	1	29	10	19	105
2009	11	9	8	17	9	18	8	6	19	17	24	135
2008	12											0
Total		113	54	149	126	138	43	32	218	130	148	1151

Unique Herd Breakdowns		DVO_CODE										
Year	Armagh	Ballymena	Coleraine	Dungannon	Enniskillen	Larne	L'Derry	Newry	Nt'Ards	Omagh	Total Herds	
2009	150	65	186	153	192	51	37	288	176	167	1465	

Tuberculosis: number of reactor herds by month and by DVO in 2008 and unique herd breakdowns during the year

2008		DVO_CODE										
Year	Month	Armagh	Ballymena	Coleraine	Dungannon	Enniskillen	Larne	L'Derry	Newry	Nt'Ards	Omagh	Total
2008	1	10	6	14	16	19	9	4	17	6	22	123
2008	2	11	4	15	16	19	7	3	28	15	23	141
2008	3	6	11	5	6	15	4	5	15	14	15	96
2008	4	7	7	12	12	20	4	2	26	14	17	121
2008	5	13	6	10	10	11	3	7	23	10	13	106
2008	6	4	2	6	2	13	1	6	19	11	8	72
2008	7	7	1	4	13	7	2	2	17	13	9	75
2008	8	4	1	7	8	13	4	2	25	17	8	89
2008	9	6	2	9	14	19	4	1	18	15	3	91
2008	10	7	4	12	10	26	3	4	22	11	9	108
2008	11	14	7	21	15	20	9	9	18	11	12	136
2008	12	6	6	15	14	20	11	4	14	13	12	115
Total		95	57	130	136	202	61	49	242	150	151	1273

Unique Herd Breakdowns		DVO_CODE										
Year	Armagh	Ballymena	Coleraine	Dungannon	Enniskillen	Larne	L'Derry	Newry	Nt'Ards	Omagh	Total Herds	
2008	128	66	158	167	248	67	56	315	215	178	1598	

Tuberculosis: number of reactor herds by month and by DVO in 2007 and unique herd breakdowns during the year

2007		DVO_CODE										
Year	Month	Armagh	Ballymena	Coleraine	Dungannon	Enniskillen	Larne	L'Derry	Newry	Nt'Ards	Omagh	Total
2007	1	17	11	15	24	13	10	0	20	14	11	135
2007	2	12	10	14	12	17	5	7	15	13	19	124
2007	3	10	5	13	15	25	3	5	12	10	10	108
2007	4	14	6	4	11	12	4	4	19	8	15	97
2007	5	11	3	8	7	9	1	1	16	13	15	84
2007	6	9	2	7	13	8	4	0	15	9	3	70
2007	7	7	3	5	6	11	1	2	17	7	12	71
2007	8	9	6	12	6	16	3	0	19	14	6	91
2007	9	9	3	10	15	9	3	1	20	16	8	94
2007	10	13	6	4	10	14	0	1	18	18	13	97
2007	11	17	10	31	19	18	5	7	20	25	17	169
2007	12	9	7	12	14	9	7	5	16	20	25	124
Total		137	72	135	152	161	46	33	207	167	154	1264

Unique Herd Breakdowns		DVO_CODE										
Year	Armagh	Ballymena	Coleraine	Dungannon	Enniskillen	Larne	L'Derry	Newry	Nt'Ards	Omagh	Total Herds	
2007	181	82	169	196	221	57	35	277	239	176	1633	

A herd is defined as being a TB reactor herd if it had at least one TB reactor animal in that month and no TB reactor animals during the previous 12 months.

A TB unique herd breakdown is defined as a herd which has had at least one TB reactor during the specified calendar year irrespective of any TB reactors during the previous calendar year

Tuberculosis: number of reactor animals by month and by DVO 2009

2009		DVO_CODE										
Year	Month	Armagh	Ballymena	Coleraine	Dungannon	Enniskillen	Larne	L'Derry	Newry	Nt'Ards	Omagh	Total
2009	1	125	47	98	80	124	9	15	194	96	58	846
2009	2	99	6	105	46	103	30	7	130	118	81	725
2009	3	133	38	67	74	66	12	5	120	105	59	679
2009	4	63	12	81	66	170	9	13	155	97	106	772
2009	5	169	10	38	30	53	2	2	106	59	147	616
2009	6	67	21	29	23	53	2	0	140	50	43	428
2009	7	130	12	41	27	129	12	49	161	90	40	691
2009	8	96	15	22	44	124	0	11	189	36	78	615
2009	9	145	7	75	62	80	2	3	177	96	21	668
2009	10	32	18	96	43	100	25	6	183	106	95	704
2009	11	57	20	78	43	91	50	10	107	156	134	746
2009	12											0
Total		1116	206	730	538	1093	153	121	1662	1009	862	7490

Tuberculosis: number of reactor animals by month and by DVO 2008

2008		DVO_CODE										
Year	Month	Armagh	Ballymena	Coleraine	Dungannon	Enniskillen	Larne	L'Derry	Newry	Nt'Ards	Omagh	Total
2008	1	77	26	65	86	124	15	19	80	104	96	692
2008	2	107	6	96	86	126	31	13	173	126	131	895
2008	3	42	38	62	42	60	9	8	99	173	84	617
2008	4	38	12	58	49	111	30	14	180	57	83	632
2008	5	49	25	38	32	79	27	10	98	192	70	620
2008	6	24	3	85	43	73	2	6	157	54	105	552
2008	7	79	3	12	48	119	10	12	114	135	57	589
2008	8	37	5	49	48	115	32	12	186	131	32	647
2008	9	87	4	22	61	140	10	3	71	144	9	551
2008	10	29	9	29	26	181	25	32	222	95	16	664
2008	11	304	31	99	44	221	34	36	144	116	39	1068
2008	12	267	14	82	66	150	26	7	105	62	84	863
Total		1140	176	697	631	1499	251	172	1629	1389	806	8390

Tuberculosis: number of reactor animals by month and by DVO 2007

2007		DVO_CODE										
Year	Month	Armagh	Ballymena	Coleraine	Dungannon	Enniskillen	Larne	L'Derry	Newry	Nt'Ards	Omagh	Total
2007	1	36	16	93	162	79	45	0	107	120	41	699
2007	2	82	14	67	83	114	29	11	122	92	50	664
2007	3	36	23	96	77	141	15	5	265	142	47	847
2007	4	71	24	20	76	45	60	5	175	76	48	600
2007	5	40	17	17	49	49	1	1	133	91	32	430
2007	6	30	2	12	72	78	12	0	74	74	32	386
2007	7	67	6	9	10	60	5	3	127	87	32	406
2007	8	137	31	39	42	102	26	3	127	98	34	639
2007	9	39	5	18	64	119	6	1	137	95	34	518
2007	10	41	8	6	18	96	2	4	150	151	54	530
2007	11	45	19	90	82	139	9	8	140	209	104	845
2007	12	42	38	67	69	87	44	17	112	189	70	735
Total		666	203	534	804	1109	254	58	1669	1424	578	7299

**A TB reactor animal is defined as an animal where the manual interpretation field for a skin test is positive ('P') with the first test date being taken as the time at which the animal became a reactor.
Animals with lesions at routine slaughter ('LRS') are not taken into account.**

Month = November 2009

Ref.		Total	Armagh	Ballymena	Coleraine	Dungannon	Enniskillen	Larne	L'derry	Newry	Nt'ards	Omagh
b16	No. herds with any test completed in month	4009	395	251	418	442	531	321	139	626	321	565
b17	No. herds with any test, from start of year	21918	2168	1260	2410	2693	2891	1535	811	3527	1743	2880
b29	All herds with any test, from start of year	22840	2245	1334	2543	2816	2962	1613	846	3654	1848	2979
b18	No. herds with any test, from start of year (no cattle)	922	77	74	133	123	71	78	35	127	105	99
b19	No. herds with herd test completed in month	3568	343	224	383	385	483	276	120	574	288	492
b20	No. herds with herd test, from start of year	21514	2136	1226	2337	2642	2861	1475	800	3503	1722	2812
b30	All herds with herd test, from start of year	22458	2214	1300	2478	2767	2933	1555	835	3634	1829	2913
b21	No. herds with herd test, from start of year (no cattle)	944	78	74	141	125	72	80	35	131	107	101
b22	No. herds with herd test during last 12 months	22895	2222	1364	2526	2819	3041	1648	857	3614	1790	3014
b31	No. herds with herd test during last 13-24 months	22895	2216	1391	2522	2783	2987	1662	874	3596	1806	3058
b28	No. herds with herd test during 2008	22835	2227	1376	2527	2767	2995	1638	863	3585	1797	3060
b23	No. herds with herd test during 2007	23642	2253	1444	2664	2881	3119	1702	858	3690	1891	3140
b24	No. herds with herd test during 2006	24301	2369	1496	2706	2944	3173	1743	933	3766	1948	3223
b39	No. herds with herd test during 2005	24820	2430	1529	2826	3031	3204	1771	904	3840	2005	3280
b32	No. herds with herd test during 2004	25349	2468	1588	2877	3127	3277	1893	960	3833	2019	3307
b25	No. herds with any risk test completed	9753	1270	462	864	958	1278	429	250	2270	895	1077
b26	No. herds with herd risk test completed	6887	947	240	457	453	1026	159	126	2064	675	740
b27	No. herds with restricted herd test completed	2456	260	102	280	285	296	112	67	491	314	249

Month = November 2009

Ref	Total	Armagh	Ballymena	Coleraine	Dungannon	Enniskillen	Larne	L'derry	Newry	Nt'ards	Omagh	
c1	Total number of tests in current month	4377	463	265	453	496	562	354	147	662	350	625
c2	Total number of tests from start of year	38826	4311	2015	3989	4698	4919	2399	1240	7042	3365	4848
c3	No. tests during the same time period in the previous year	37842	4171	2001	3904	4334	4789	2370	1277	6571	3519	4906
c4	% change between years	2.5	3.2	0.7	2.1	7.7	2.6	1.2	-3.0	6.7	-4.6	-1.2
c5	No. tests in the previous 12 months	42606	4668	2264	4390	5173	5441	2704	1379	7638	3670	5279
c6	No. animal tests in current month	279277	27849	19576	40314	30817	29960	22098	8797	36505	28030	35331
c7	No. animal tests from start of year	2151119	237173	124546	260373	239486	229306	132448	68186	371016	241999	246586
c8	No. animal tests during the same time period in the previous year	2134568	229788	115500	233522	239257	237236	134493	75696	341314	265795	261967
c9	% change between years	0.8	3.1	7.3	10.3	0.1	-3.5	-1.5	-11.0	8.0	-9.8	-6.2
c10	No. animal tests in previous 12 months	2385108	260230	140576	289748	265372	255364	155322	74915	402976	265667	274938
c11	No. cattle eligible for TB testing	1616287	155224	114111	212096	188351	163493	140452	63918	208209	165534	204899
c12	No. cattle herds eligible for TB testing	26348	2586	1604	2939	3187	3370	1952	1031	4087	2105	3487
c13	No. restricted herd tests during month	329	42	13	38	42	42	15	6	57	37	37
c14	No. animals tested	52537	6729	1496	8183	7582	5031	2713	975	9091	5729	5008
c15	No. herd tests during month	3569	343	224	383	385	483	276	120	574	288	493
c16	No. animals tested	276638	27237	19352	40146	30499	29735	21675	8748	36335	27835	35076
c17	No. individual tests during month	808	120	41	70	111	79	78	27	88	62	132
c18	No. animals tested	2639	612	224	168	318	225	423	49	170	195	255
c23	No. animals TB tested since start of year	1472159	159079	97901	192550	182932	151078	114054	54349	219377	159612	184277
c19	No. animals TB tested in previous 12 months	1587898	169859	109279	211002	197281	163342	132404	59112	228208	169027	201404
c24	No. animals TB tested in previous 13-24 months	1590136	168038	109229	202251	192766	165970	134129	64373	224484	173678	205820
c22	No. animals TB tested in 2008	1592213	168975	106901	203946	194354	167758	132365	63158	225195	173195	206851
c20	No. animals TB tested in 2007	1640552	172852	114560	215201	199652	174151	136324	62184	225462	178638	205208
c21	No. animals TB tested in 2006	1711870	182776	120699	220008	210854	182488	144582	69516	234093	185689	215645
c26	No. animals TB tested in 2005	1776064	183292	125632	237269	222514	184630	151248	66659	234585	191843	226983
c25	No. animals TB tested in 2004	1865762	185178	134129	249856	240990	198531	162067	76106	239332	202259	238461

Month = December 2009

Ref		Total	Armagh	Ballymena	Coleraine	Dungannon	Enniskillen	Larne	L'derry	Newry	Nt'ards	Omagh
f1	No. of Officially Tuberculosis Free Herds (OTF)	23848	2323	1518	2611	2900	3122	1781	899	3627	1832	3235
f2	No. of Officially Tuberculosis Suspended Herds (OTS)	1778	186	75	225	200	147	168	105	295	157	220
f3	No. of Officially Tuberculosis Withdrawn Herds (OTW)	1053	119	44	118	130	102	44	25	223	149	99
f4	% herds that are OTF	89.4	88.4	92.7	88.4	89.8	92.6	89.4	87.4	87.5	85.7	91.0
f5	% herds that are OTS	6.7	7.1	4.6	7.6	6.2	4.4	8.4	10.2	7.1	7.3	6.2
f6	% herds that are OTW	3.9	4.5	2.7	4.0	4.0	3.0	2.2	2.4	5.4	7.0	2.8

Month = November 2009												
Ref	(Data lagged by 4 months)	Total	Armagh	Ballymena	Coleraine	Dungannon	Enniskillen	Larne	L'derry	Newry	Nt'ards	Omagh
e1	No. TB animals found at routine slaughter in current year	312	44	18	29	37	13	6	8	90	36	31
e19	No. TB animals found at routine slaughter in last 12 months	616	72	36	53	78	37	15	9	168	89	59
e20	No. TB animals found at routine slaughter in last 13-24 months	729	100	35	39	102	58	24	7	172	121	71
e6	No. TB animals found at routine slaughter in 2008	638	73	32	51	92	47	19	6	153	106	59
e2	No. TB animals found at routine slaughter in 2007	695	103	31	32	95	60	21	13	169	107	64
e3	No. TB animals found at routine slaughter in 2006	640	81	22	41	86	54	34	16	144	111	51
e4	No. TB animals found at routine slaughter in 2005	656	82	23	46	89	56	22	18	123	146	51
e5	No. TB animals found at routine slaughter in 2004	774	78	38	87	98	53	46	9	152	136	77
e7	No. herds with TB found at routine slaughter in current year	218	30	10	26	23	11	6	7	53	28	24
e21	No. herds with TB found at routine slaughter in last 12 months	416	55	17	45	52	26	14	11	97	58	41
e22	No. herds with TB found at routine slaughter in last 13-24 months	516	70	20	28	73	50	20	7	98	94	56
e12	No. herds with TB found at routine slaughter in 2008	450	60	16	37	68	36	18	6	90	72	47
e8	No. herds with TB found at routine slaughter in 2007	513	71	14	25	67	55	20	10	116	85	50
e9	No. herds with TB found at routine slaughter in 2006	461	63	19	33	65	43	28	16	80	77	37
e10	No. herds with TB found at routine slaughter in 2005	542	67	21	42	69	47	22	17	103	109	45
e11	No. herds with TB found at routine slaughter in 2004	630	66	32	72	87	43	36	9	129	99	57
e13	% of TB animals that were LRS in current year	6.2	5.3	11.0	5.9	9.7	1.8	7.3	8.1	8.2	5.5	5.5
e23	% of TB animals that were LRS in last 12 months	6.7	4.6	14.7	6.7	11.7	2.4	6.9	4.7	8.8	7.1	7.6
e24	% of TB animals that were LRS in last 13-24 months	8.5	12.2	14.1	5.8	13.4	4.5	10.2	5.7	9.9	7.1	7.2
e18	% of TB animals that were LRS in 2008	7.1	6.0	15.4	6.8	12.7	3.0	7.0	3.4	8.6	7.1	6.8
e14	% of TB animals that were LRS in 2007	8.7	13.4	13.2	5.7	10.6	5.1	7.6	18.3	9.2	7.0	10.0
e15	% of TB animals that were LRS in 2006	6.4	8.2	9.7	6.3	8.2	3.1	10.3	9.1	6.7	5.6	7.2
e16	% of TB animals that were LRS in 2005	5.9	9.5	6.1	4.2	5.5	3.4	8.0	11.3	7.1	6.2	5.1
e17	% of TB animals that were LRS in 2004	4.9	8.5	6.9	5.5	4.3	1.7	6.5	9.9	7.1	4.7	5.1

Month = November 2009												
Ref	(Data lagged by 4 months)	Total	Armagh	Ballymena	Coleraine	Dungannon	Enniskillen	Larne	L'derry	Newry	Nt'ards	Omagh
g1	No. of confirmed TB reactors during current year	1801	246	58	221	155	265	16	30	326	248	236
g31	No. of confirmed TB reactors during last 12 months	3175	497	78	348	239	562	52	89	548	429	333
g32	No. of confirmed TB reactors during last 13-24 months	3374	328	110	304	263	492	74	64	495	756	488
g6	No. of confirmed TB reactors 2008	3298	425	76	329	231	536	75	102	514	590	420
g2	No. of confirmed TB reactors 2007	3204	306	102	273	370	523	92	37	537	640	324
g3	No. of confirmed TB reactors 2006	3973	407	84	296	370	721	73	87	787	829	319
g4	No. of confirmed TB reactors 2005	3990	292	155	352	450	533	50	65	702	996	395
g5	No. of confirmed TB reactors 2004	4950	336	231	606	574	677	150	26	669	1133	548
g7	Total animals with confirmed TB during current year	2113	290	76	250	192	278	22	38	416	284	267
g33	Total animals with confirmed TB during last 12 months	3791	569	114	401	317	599	67	98	716	518	392
g34	Total animals with confirmed TB in last 13-24 months	4103	428	145	343	365	550	98	71	667	877	559
g12	Total animals with confirmed TB in 2008	3936	498	108	380	323	583	94	108	667	696	479
g8	Total animals with confirmed TB in 2007	3899	409	133	305	465	583	113	50	706	747	388
g9	Total animals with confirmed TB in 2006	4613	488	106	337	456	775	107	103	931	940	370
g10	Total animals with confirmed TB in 2005	4646	374	178	398	539	589	72	83	825	1142	446
g11	Total animals with confirmed TB in 2004	5724	414	269	693	672	730	196	35	821	1269	625
g13	Confirmed TB animal prevalence in current year (%)	0.192	0.243	0.109	0.187	0.153	0.245	0.026	0.098	0.235	0.231	0.203
g35	Confirmed TB animal prevalence in last 12 months (%)	0.235	0.341	0.103	0.189	0.161	0.363	0.049	0.155	0.313	0.301	0.190
g36	Confirmed TB animal prevalence in last 13-24 months (%)	0.252	0.247	0.127	0.163	0.189	0.320	0.070	0.110	0.295	0.502	0.267
g18	Confirmed TB animal prevalence in 2008 (%)	0.247	0.295	0.101	0.186	0.166	0.348	0.071	0.171	0.296	0.402	0.232
g14	Confirmed TB animal prevalence in 2007 (%)	0.240	0.237	0.116	0.142	0.233	0.335	0.083	0.080	0.313	0.418	0.189
g15	Confirmed TB animal prevalence in 2006 (%)	0.228	0.267	0.088	0.153	0.216	0.425	0.074	0.148	0.398	0.506	0.172
g16	Confirmed TB animal prevalence in 2005 (%)	0.260	0.204	0.142	0.168	0.242	0.319	0.048	0.125	0.352	0.595	0.196
g17	Confirmed TB animal prevalence in 2004 (%)	0.249	0.224	0.201	0.277	0.279	0.368	0.121	0.046	0.343	0.627	0.262

g19	No. herds with confirmed TB in current year	807	83	39	106	76	96	20	19	173	105	90
g37	No. herds with confirmed TB in last 12 months	1364	132	48	159	148	175	45	43	284	185	145
g38	No. herds with confirmed TB in last 13-24 months	1473	162	65	128	173	194	44	33	259	228	187
g24	No. herds with confirmed TB in 2008	1412	129	57	138	160	197	50	46	271	207	157
g20	No. herds with confirmed TB in 2007	1507	185	56	127	184	200	49	31	266	230	179
g21	No. herds with confirmed TB in 2006	1664	194	68	147	202	222	59	60	278	263	171
g22	No. herds with confirmed TB in 2005	1856	169	104	235	244	216	63	50	262	298	215
g23	No. herds with confirmed TB in 2004	2298	181	119	329	298	303	80	29	333	333	293
g25	Confirmed TB herd prevalence in current year (%)	5.13	5.00	4.71	6.73	4.23	4.58	1.92	3.56	6.12	7.98	4.41
g39	Confirmed TB herd prevalence in last 12 months (%)	5.82	5.87	3.39	6.12	5.17	5.66	2.61	4.86	7.80	10.05	4.66
g40	Confirmed TB herd prevalence in last 13-24 months (%)	6.20	7.04	4.45	4.82	6.02	6.21	2.52	3.64	7.06	12.25	5.88
g30	Confirmed TB herd prevalence in 2008 (%)	6.18	5.79	4.14	5.46	5.78	6.58	3.05	5.33	7.56	11.52	5.13
g26	Confirmed TB herd prevalence in 2007 (%)	6.37	8.21	3.88	4.77	6.39	6.41	2.88	3.61	7.21	12.16	5.70
g27	Confirmed TB herd prevalence in 2006 (%)	6.85	8.19	4.55	5.43	6.86	7.00	3.38	6.43	7.38	13.50	5.31
g28	Confirmed TB herd prevalence in 2005 (%)	7.48	6.95	6.80	8.32	8.05	6.74	3.56	5.53	6.82	14.86	6.55
g29	Confirmed TB herd prevalence in 2004 (%)	9.07	7.33	7.49	11.44	9.53	9.25	4.23	3.02	8.69	16.49	8.86

Explanatory Comments for Tuberculosis Statistics - B. Outstanding_Tests

Ref	Data Title	Explanation
B1	No. herds due a herd test in month	Test still due from the above month's allocation
B2	No. of herd tests overdue by 1 to 2 months	Number of herds with the herd test due 1 to 2 months before the above month
B3	No. herd tests overdue by 3 to 4 months	Number of herds with the herd test due 3 to 4 months before the above month
B4	No. herd tests overdue by more than 4 months	Number of herds with the herd test due more than 4 months before the above month.
B5	Total outstanding herd tests	Summation of all outstanding TB herd tests with a due date on or before the above month.
B6	No. herds due a herd risk test in month	HERD RISK TEST Herd-level test which is not routine or restricted status (RHT, RH1, RH2). The risk test still due from the above month's allocation
B7	No. herd risk tests overdue by 1 to 2 months	Number of herds with a herd risk test due 1 to 2 months before the above month.
B8	No. herd risk tests overdue by 3 to 4 months	Number of herds with the herd risk test due 3 to 4 months before the above month.
B9	No. herd risk tests overdue by > 4 months	Number of herds with the herd risk test due more than 4 months before the above month.
B10	Total outstanding herd risk tests	Summation of all outstanding TB herd risk tests with a due date on or before the above month.
B11	No. herds due a restricted herd test in month	RESTRICTED HERD TEST Herd level test which is of restricted status (RHT, RH1, RH2). The restricted test is still due from the above month's allocation
B12	No. restricted herd tests overdue by 1 to 2 months	Number of herds with a restricted herd test due 1 to 2 months before the above month.
B13	No. restricted herd tests overdue by 3 to 4 months	No. of herds with a restricted herd tests overdue by 3 to 4 months before the above month
B14	No. restricted herd tests overdue by > 4 months	No. of herds with a restricted herd tests overdue by > 4 months before the above month
B15	Total outstanding restricted herd tests	Summation of all outstanding TB restricted herd test with a due date on or before the above month.
B33	No. individual tests due in month	= Any individual animal level test that is still due from the above month's allocation.
B34	No. individual tests overdue by 1 to 2 months	= Any individual animal level due 1 to 2 months before the above month.
B35	No. individual tests overdue by 3 to 4 months	= Any individual animal level due 3 to 4 months before the above month.
B36	No. individual tests overdue by > 4 months	= Any individual animal level due more than 4 months before the above month.
B37	Total outstanding individual tests	Summation of all outstanding TB individual animal level tests with a due date on or before the above month.
B38	Total outstanding RI tests	Summation of all outstanding TB RI tests with a due date on or before the above month.
B40	Total outstanding CTTs	Summation of all outstanding TB CTTs (contact tracing test) with a due date on or before the above month.

Explanatory Comments for Tuberculosis Statistics - B. Testing Herds

B16	No. herds with any test completed in month	Test of any disease status and size (herd or animal-level). Tests with no animals are excluded.
B17	No. herds with any test, from start of year	Test of any disease status and size (herd or animal-level) carried out on a herd since 1st January. Tests with no animals are excluded.
B29	All herds with any test, from start of year	Skin test of any disease status and size (herd or animal-level) carried out on a herd since 1st January. Tests with no animals are included.
B18	No. herds with any test, from start of year (no cattle)	Herd or individual test of any disease status (routine, risk or restricted) where no cattle were recorded at all such tests since 1st January
B19	No. herds with herd test completed in month	Herd level test of any disease status (routine, risk or restricted) completed during the above month. Tests with no animals are excluded.
B20	No. herds with herd test, from start of year	Herd level test of any disease status (routine, risk or restricted) completed since 1st January. Tests with no animals are excluded.
B30	All herds with herd test, from start of year	Herd level test of any disease status (routine, risk or restricted) completed since 1st January. Tests with no animals are included.
B21	No. herds with herd test, from start of year (no cattle)	Herd level test of any disease status (routine, risk or restricted) where no cattle were recorded at all such herd tests since 1st January.
B22	No. herds with herd test during last 12 months	Herd level test of any disease status (routine, risk or restricted) completed in the 12 month period from the above month. Tests with no animals are excluded.
B31	No. herds with herd test during last 13-24 months	Herd level test of any disease status (routine, risk or restricted) completed in the 13-24 months from the above month. Tests with no animals are excluded.
B39	No. herds with herd test during 2005	Herd level test of any disease status (routine, risk or restricted) completed in the calendar year. Tests with no animals are excluded.
B32	No. herds with herd test during 2004	Herd level test of any disease status (routine, risk or restricted) completed in the calendar year. Tests with no animals are excluded.
B28	No. herds with herd test during 2008	Herd level test of any disease status (routine, risk or restricted) completed in the calendar year. Tests with no animals are excluded.
B23	No. herds with herd test during 2007	Herd level test of any disease status (routine, risk or restricted) completed in the calendar year. Tests with no animals are excluded.
B24	No. herds with herd test during 2006	Herd level test of any disease status (routine, risk or restricted) completed in the calendar year. Tests with no animals are excluded.
B25	No. herds with any risk test completed	Herd has had a herd or individual level risk test since start of calendar year and number tested > 0
B26	No. herds with herd risk test completed	Herd has had a herd level risk test since start of calendar year and number tested > 0.
B27	No. herds with restricted herd test completed	Herd has had a restricted herd test (RHT, RH1, RH2) since start of calendar year and number tested

Explanatory Comments for Tuberculosis Statistics - C. Testing Animals

Ref	Data Title	Explanation
C1	Total number of tests in current month	Number of herds and individual tests performed in the month stated above. Tests with no animals are excluded
C2	Total number of tests from start of year	From 1st January. Tests with no animals are excluded.
C3	No. tests during the same time period in the previous year	From 1st January of previous year. Tests with no animals are excluded.
C4	% change between years	Difference between the number of tests carried out during the current year and the number carried out in the previous expressed as a percentage.
C5	No. tests in the previous 12 months	Last 12 month period from the above month. Tests with no animals are excluded.
C6	No. animal tests in current month	Animal test = a count of the number of animals tested within each herd or individual test. Some animals may have been tested multiple times during the year.
C7	No. animal tests from start of year	Number of animal tests carried out since 1st January.
C8	No. animal tests during the same time period in the previous year	Number of animal tests carried out from 1st January in the previous year over the same time interval as recorded for the current year.
C9	% change between years	Difference between the number of animal tests during the current year and the number carried out in the previous expressed as a percentage.
C10	No. animal tests in previous 12 months	Last 12 month period from the above month.
C11	No. cattle eligible for TB testing	Based on the average number of animals presented at TB herd tests over last 4 years.
C12	No. cattle herds eligible for TB testing	Based on cattle being presented for a TB herd tests over last 4 years. Herds with '0' cattle are excluded.
C13	No. restricted herd tests during month	All restricted herd tests (RHT, RH1 and RH2) carried out during the above month.
C14	No. animals tested	Total of the animals reported as being tested within restricted herd tests (RHT, RH1, RH2) during the above month.
C15	No. herd tests during month	Total of the animals reported as being tested within all herd tests during the above month.
C16	No. animals tested	Total of the animals reported as being tested within all herd tests during the above month.
C17	No. individual tests during month	Total of the animals reported as being tested within all individual tests during the above month.
C18	No. animals tested	Total of the animals reported as being tested within all individual tests during the above month.
C23	No. animals TB tested since start of year	Animals identified as having had at least one TB skin test since the start of the calendar year. Due to the same animals being sampled in different DVO areas, the 'Total' is not the sum of the DVO figures.
C19	No. animals TB tested in previous 12 months	Animals identified as having had at least one TB skin test during the last 12 month period from the above month. Due to the same animals being sampled in different DVO areas, the 'Total' is not the sum of the DVO figures.
C24	No. animals TB tested in previous 13-24 months	Animals identified as having had at least one TB skin test during the last 13-24 months from the above month. Due to the same animals being sampled in different DVO areas, the 'Total' is not the sum of the DVO figures
C26	No. animals TB tested in 2005	Animals identified as having had at least one TB skin test during the calendar year. Due to the same animals being sampled in different DVO areas, the 'Total' is not the sum of the DVO figures.
C25	No. animals TB tested in 2004	Animals identified as having had at least one TB skin test during the calendar year. Due to the same animals being sampled in different DVO areas, the 'Total' is not the sum of the DVO figures.
C22	No. animals TB tested in 2008	Animals identified as having had at least one TB skin test during the calendar year. Due to the same animals being sampled in different DVO areas, the 'Total' is not the sum of the DVO figures.
C20	No. animals TB tested in 2007	Animals identified as having had at least one TB skin test during the calendar year. Due to the same animals being sampled in different DVO areas, the 'Total' is not the sum of the DVO figures.
C21	No. animals TB tested in 2006	Animals identified as having had at least one TB skin test during the calendar year. Due to the same animals being sampled in different DVO areas, the 'Total' is not the sum of the DVO figures.

Explanatory Comments for Tuberculosis Statistics - D. Results

Ref	Data Title	Explanation
D1	No. of herds with TB reactors during month	A herd is included in this figure if the herd number had a TB skin test reactor during the above month.
D2	No. of new reactor herds during month	A herd is defined as being a TB reactor herd if it had at least one TB reactor animal in that month and no TB reactor animals during the previous 12 months.
D3	No. of new reactor herds since start of year	= Since 1st January
D4	No. of new reactor herds in the previous 12 months	Last 12 month period from the above month.
D26	No. of new reactor herds in previous 13-24 months	Last 13-24 month period from the above month.
D5	No. of TB reactor animals during month	A TB reactor animal is defined as an animal where the manual interpretation field for a skin test is positive ('P') with the first test date being taken as the time at which the animal became a reactor. Currently animals with lesionas at routine slaughter ("LRS")are not taken into account
D6	No. of TB reactor animals since start of year	= Since 1st January
D7	No. of reactor animals in the previous 12 months	Last 12 month period from the above month.
D27	No. of reactor animals in previous 13-24 months	Last 13-24 month period from the above month.
D8	Herd Prevalence (%)	Number of herds with a TB reactor during the above month as a proportion of cattle herds which have presented cattle for a TB herd test during the same time period.
D20	Cumulative herd incidence in year (%)	Number of NEW reactor herds since the start of the calendar year as a proportion of cattle herds which have presented cattle for a TB herd test during the same time period.
D9	Annual herd incidence over the last 12 months (%)	Number of NEW reactor herds during the last 12 months as a proportion of cattle herds which have presented cattle for a TB herd test during the same time period.
D28	Annual herd incidence over the last 13-24 months (%)	Number of NEW reactor herds during the last 13-24 months as a proportion of cattle herds which have presented cattle for a TB herd test during the same time period.
D38	2005 Herd Incidence (%)	Number of NEW reactor herds during the year as a proportion of cattle herds which have presented cattle for a TB herd test during the same time period.
D30	2004 Herd Incidence (%)	Number of NEW reactor herds during the year as a proportion of cattle herds which have presented cattle for a TB herd test during the same time period.
D16	2008 Herd Incidence (%)	Number of NEW reactor herds during the year as a proportion of cattle herds which have presented cattle for a TB herd test during the same time period.
D10	2007 Herd Incidence (%)	Number of NEW reactor herds during the year as a proportion of cattle herds which have presented cattle for a TB herd test during the same time period.
D11	2006 Herd Incidence (%)	Number of NEW reactor herds during the year as a proportion of cattle herds which have presented cattle for a TB herd test during the same time period.
D21	Cumulative animal incidence in year (%)	Number of reactor animals during the above month as a proportion of cattle which have been presented for a TB test during the same time period.
D12	Annual animal incidence over the last 12 months (%)	Number of reactor animals during the last 12 months as a proportion of cattle which have been presented for a TB test during the same time period.
D29	Annual animal incidence over the last 13-24 months (%)	Number of reactor animals during the last 13-24 months as a proportion of cattle which have been presented for a TB test during the same time period.
D39	2005 Animal Incidence (%)	Number of reactor animals during the year as a proportion of cattle which have been presented for a TB herd test during the same time period.
D31	2004 Animal Incidence (%)	Number of reactor animals during the year as a proportion of cattle which have been presented for a TB herd test during the same time period.
D15	2008 Animal Incidence (%)	Number of reactor animals during the year as a proportion of cattle which have been presented for a TB herd test during the same time period.
D13	2007 Animal Incidence (%)	Number of reactor animals during the year as a proportion of cattle which have been presented for a TB herd test during the same time period.
D14	2006 Animal Incidence (%)	Number of reactor animals during 2006 as a proportion of cattle which have been presented for a TB herd test during the same time period.

D34	APT during current month	= The reactor disclosure rate per 1,000 animal tests current calendar month.
D22	APT since start of year	The reactor disclosure rate per 1,000 animal tests since the start of the calendar year.
D17	Current 12 month moving average APT	The reactor disclosure rate per 1,000 animal tests. Current refers to the rate over the last 12 months.
D42	2006 APT	The reactor disclosure rate per 1,000 animal tests during the calendar year.
D40	2005 APT	The reactor disclosure rate per 1,000 animal tests during the calendar year.
D32	2004 APT	The reactor disclosure rate per 1,000 animal tests during the calendar year.
D18	2008 APT	The reactor disclosure rate per 1,000 animal tests during the calendar year.
D19	2007 APT	The reactor disclosure rate per 1,000 animal tests during the calendar year.
D23	No. negative in contacts since start of year	Number of animals taken as negative in contacts since the start of the year
d46	No. Negative in contacts over last 12 months (%)	= Number of negative in contacts during the last 12 months
D43	No. negative in contacts during 2006	Number of animals taken as negative in contacts during the year
D41	No. negative in contacts during 2005	Number of animals taken as negative in contacts during the year
D33	No. negative in contacts during 2004	Number of animals taken as negative in contacts during the year
D24	No. negative in contacts during 2008	Number of animals taken as negative in contacts during the year
D25	No. negative in contacts during 2007	Number of animals taken as negative in contacts during the year
D37	Reactor removal time 2008	Figures given are median values for working days estimated from calendar days (calendar days multiplied by 0.685). Reactors which are not yet slaughtered or where they they were first declared as reactors at slaughter are excluded.
D45	Reactor removal time 2007	Figures given are median values for working days estimated from calendar days (calendar days multiplied by 0.685). Reactors which are not yet slaughtered or where they they were first declared as reactors at slaughter are excluded.
D35	Reactor removal time 2006	Figures given are median values for working days estimated from calendar days (calendar days multiplied by 0.685). Reactors which are not yet slaughtered or where they they were first declared as reactors at slaughter are excluded.
D44	Reactor removal time 2005	Figures given are median values for working days estimated from calendar days (calendar days multiplied by 0.685). Reactors which are not yet slaughtered or where they they were first declared as reactors at slaughter are excluded.
D36	Reactor removal time 2009	Figures given are median values for working days estimated from calendar days (calendar days multiplied by 0.685). Reactors which are not yet slaughtered or where they they were first declared as reactors at slaughter are excluded.

Explanatory Comments for LRS Data

E1	No. TB animals found at routine slaughter in current year	Animals where M. bovis was cultured from TB-like lesions found at routine slaughter (LRS) during the year that were not identified as TB reactor animals
E19	No. TB animals found at routine slaughter in last 12 months	Animals where M. bovis was cultured from TB-like lesions found at routine slaughter (LRS) during the last 12 months that were not identified as TB reactor animals
E20	No. TB animals found at routine slaughter in last 13-24 months	Animals where M. bovis was cultured from TB-like lesions found at routine slaughter (LRS) during the last 12-24 months that were not identified as TB reactor animals
E6	No. TB animals found at routine slaughter in 2008	Animals where M. bovis was cultured from TB-like lesions found at routine slaughter (LRS) during the year that were not identified as TB reactor animals
E20	No. TB animals found at routine slaughter in 2007	Animals where M. bovis was cultured from TB-like lesions found at routine slaughter (LRS) during the year that were not identified as TB reactor animals
E3	No. TB animals found at routine slaughter in 2006	Animals where M. bovis was cultured from TB-like lesions found at routine slaughter (LRS) during the year that were not identified as TB reactor animals
E4	No. TB animals found at routine slaughter in 2005	Animals where M. bovis was cultured from TB-like lesions found at routine slaughter (LRS) during the year that were not identified as TB reactor animals
E5	No. TB animals found at routine slaughter in 2004	Animals where M. bovis was cultured from TB-like lesions found at routine slaughter (LRS) during the year that were not identified as TB reactor animals
E7	No. herds with TB found at routine slaughter in current year	Herds where M. bovis was cultured from TB-like lesions found in at least one animal at routine slaughter (LRS) during the year
E21	No. herds with TB found at routine slaughter in last 12 months	Herds where M. bovis was cultured from TB-like lesions found in at least one animal at routine slaughter (LRS) during the last 12 months
E22	No. herds with TB found at routine slaughter in last 13-24 months	Herds where M. bovis was cultured from TB-like lesions found in at least one animal at routine slaughter (LRS) during the last 13-24 months
E12	No. herds with TB found at routine slaughter in 2008	Herds where M. bovis was cultured from TB-like lesions found in at least one animal at routine slaughter (LRS) during the year
E8	No. herds with TB found at routine slaughter in 2007	Herds where M. bovis was cultured from TB-like lesions found in at least one animal at routine slaughter (LRS) during the year
E9	No. herds with TB found at routine slaughter in 2006	Herds where M. bovis was cultured from TB-like lesions found in at least one animal at routine slaughter (LRS) during the year
E10	No. herds with TB found at routine slaughter in 2005	Herds where M. bovis was cultured from TB-like lesions found in at least one animal at routine slaughter (LRS) during the year
E11	No. herds with TB found at routine slaughter in 2004	Herds where M. bovis was cultured from TB-like lesions found in at least one animal at routine slaughter (LRS) during the year
E13	% of TB animals that were LRS in current year	Herds where M. bovis was cultured from TB-like lesions found in at least one animal at routine slaughter (LRS) during the year
E23	% of TB animals that were LRS in last 12 months	Number of confirmedLRS animals divided by the number of TB reactors and confirmed LRS animals during the year expressed as a %
E24	% of TB animals that were LRS in last 13-24 months	Number of confirmedLRS animals divided by the number of TB reactors and confirmed LRS animals during the year expressed as a %
E18	% of TB animals that were LRS in 2008	Number of confirmedLRS animals divided by the number of TB reactors and confirmed LRS animals during the year expressed as a %
E14	% of TB animals that were LRS in 2007	Number of confirmedLRS animals divided by the number of TB reactors and confirmed LRS animals during the year expressed as a %
E15	% of TB animals that were LRS in 2006	Number of confirmedLRS animals divided by the number of TB reactors and confirmed LRS animals during the year expressed as a %
E16	% of TB animals that were LRS in 2005	Number of confirmedLRS animals divided by the number of TB reactors and confirmed LRS animals during the year expressed as a %
E17	% of TB animals that were LRS in 2004	Number of confirmedLRS animals divided by the number of TB reactors and confirmed LRS animals during the year expressed as a %