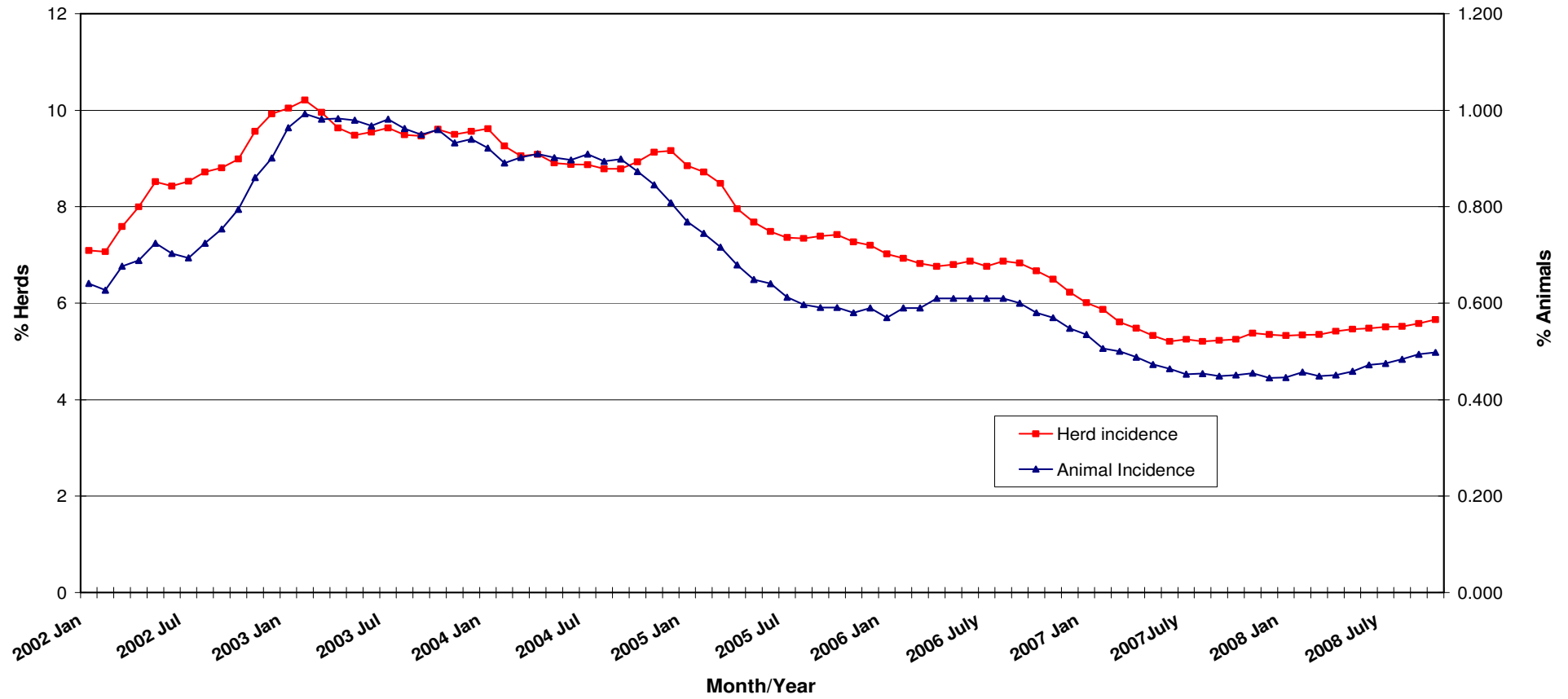
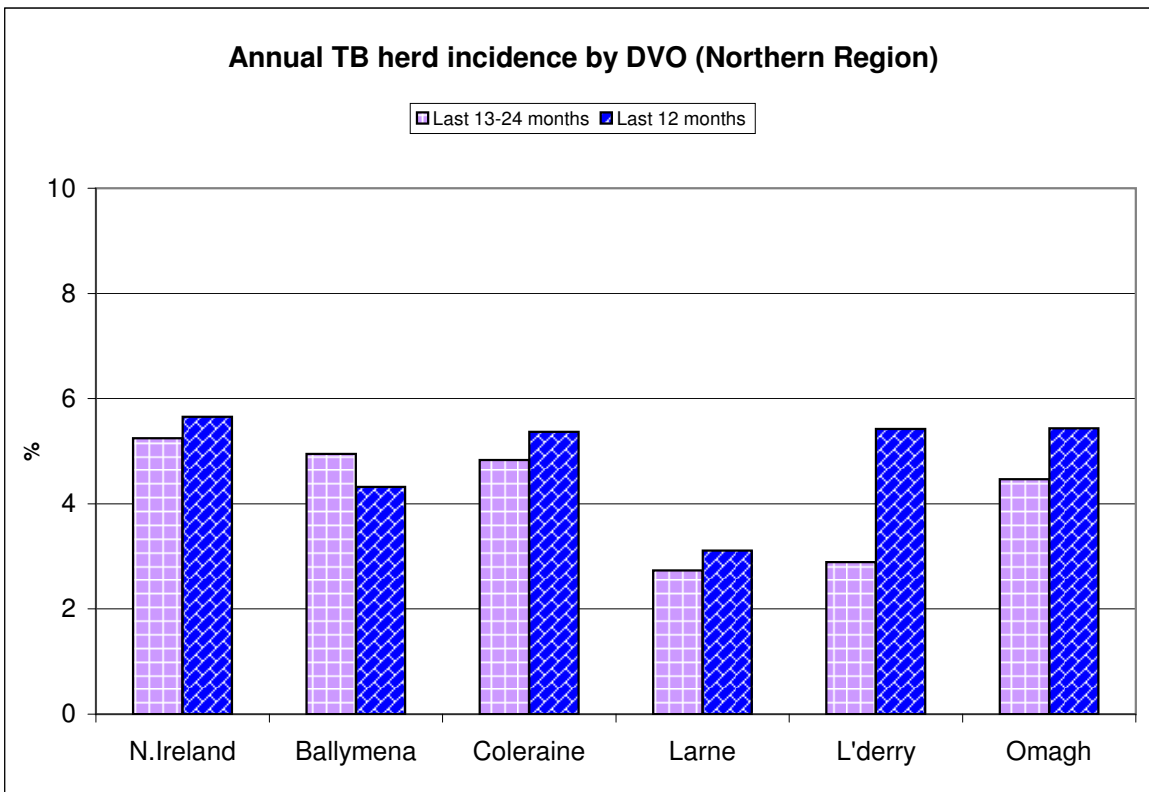
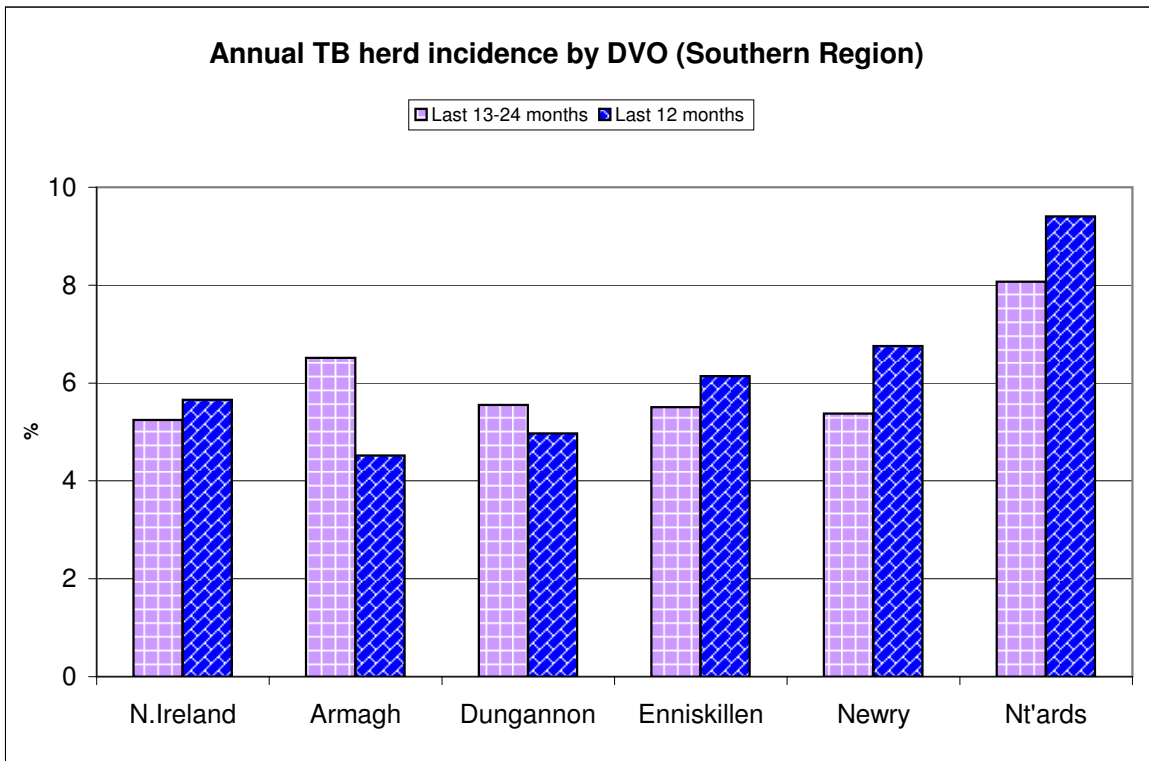


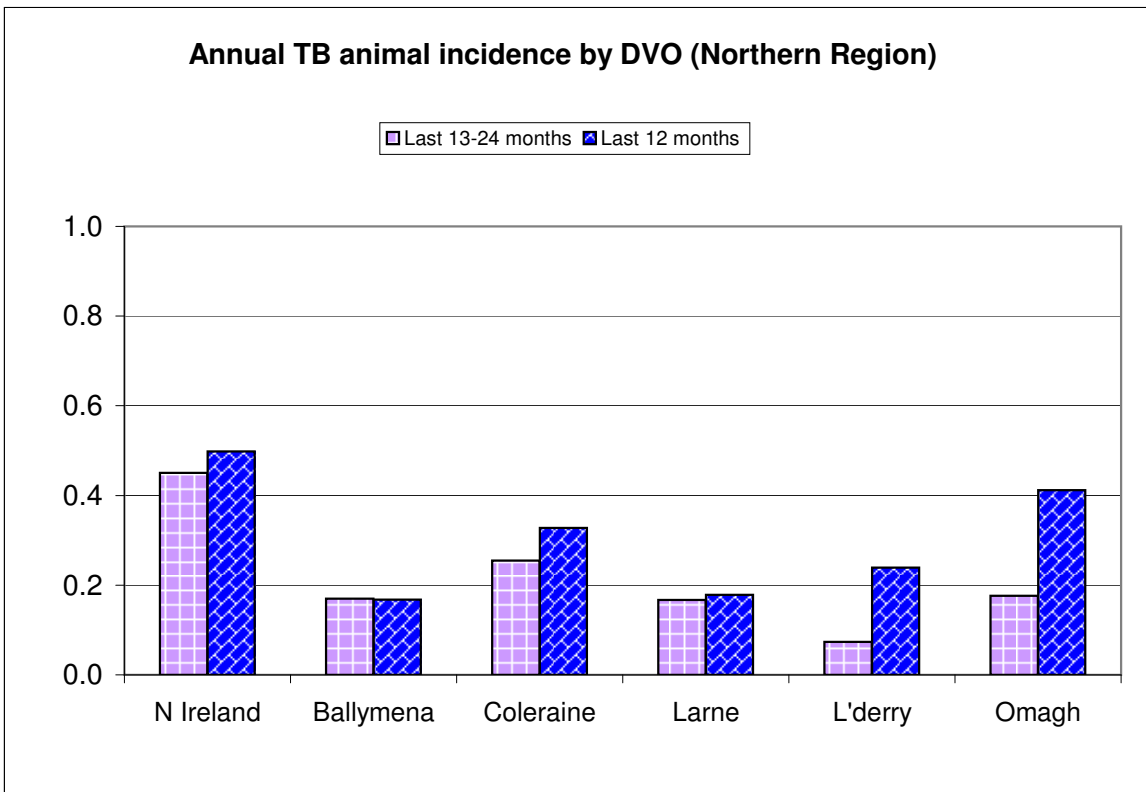
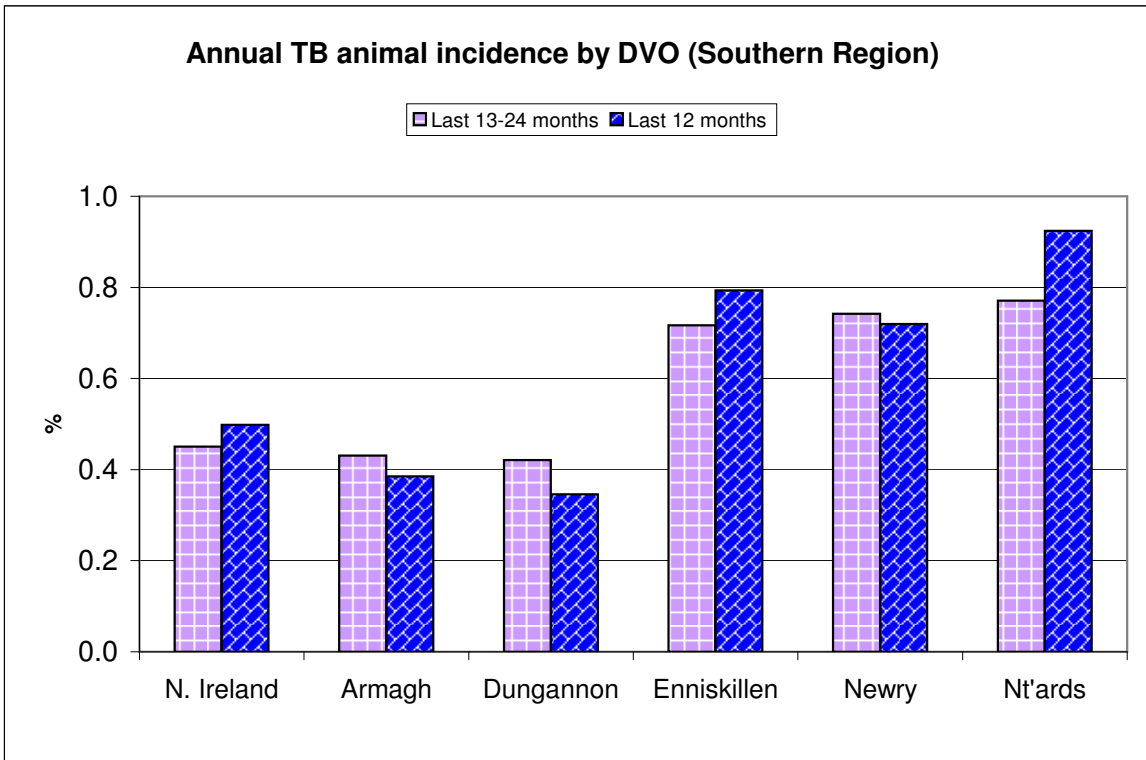
Tuberculosis: Statistics for October 2008

Tests Completed	Herds	Number of herds tested (any test), by DVO	Cumulative Statistics	
		Number of herds with herd-level test, by DVO	Cumulative Statistics	
		Number of herds with any risk test, by DVO		
		Number of herds with herd-level risk test, by DVO		
		Number of herds with herd-level restricted test, by DVO		
	Animals	Total number of tests performed, by DVO	Cumulative Statistics	
		Total number of animals tests, by DVO	Cumulative Statistics	
		Total number of restricted herd tests, by DVO	Number of animals tested	
		Total number of herd tests, by DVO	Number of animals tested	
		Total number of individual tests, by DVO	Number of animals tested	
		Total number of animals tested, by DVO		
	Summary Statistics	Herds with TB reactors during month, by DVO	Cumulative Statistics	APT
		Number of new reactor herds, by DVO	Cumulative Statistics	Negative-in-contacts
		Number of new reactor animals, by DVO		Reactor removal times
Herd Prevalance				
Herd Incidence				
Animal Incidence				
Number of reactor animals by month and by DVO				
Number of new reactor herds by month and by DVO				
Total number of all reactor herds by DVO				
Summary Charts	Current Animal Incidence Chart	Monthly TB reactors chart		
	Yearly Animal Incidence Chart	New TB reactor herds		
	Current Herd Incidence Chart	TB Herd & Animal Incidence		
	Yearly Herd Incidence Chart			

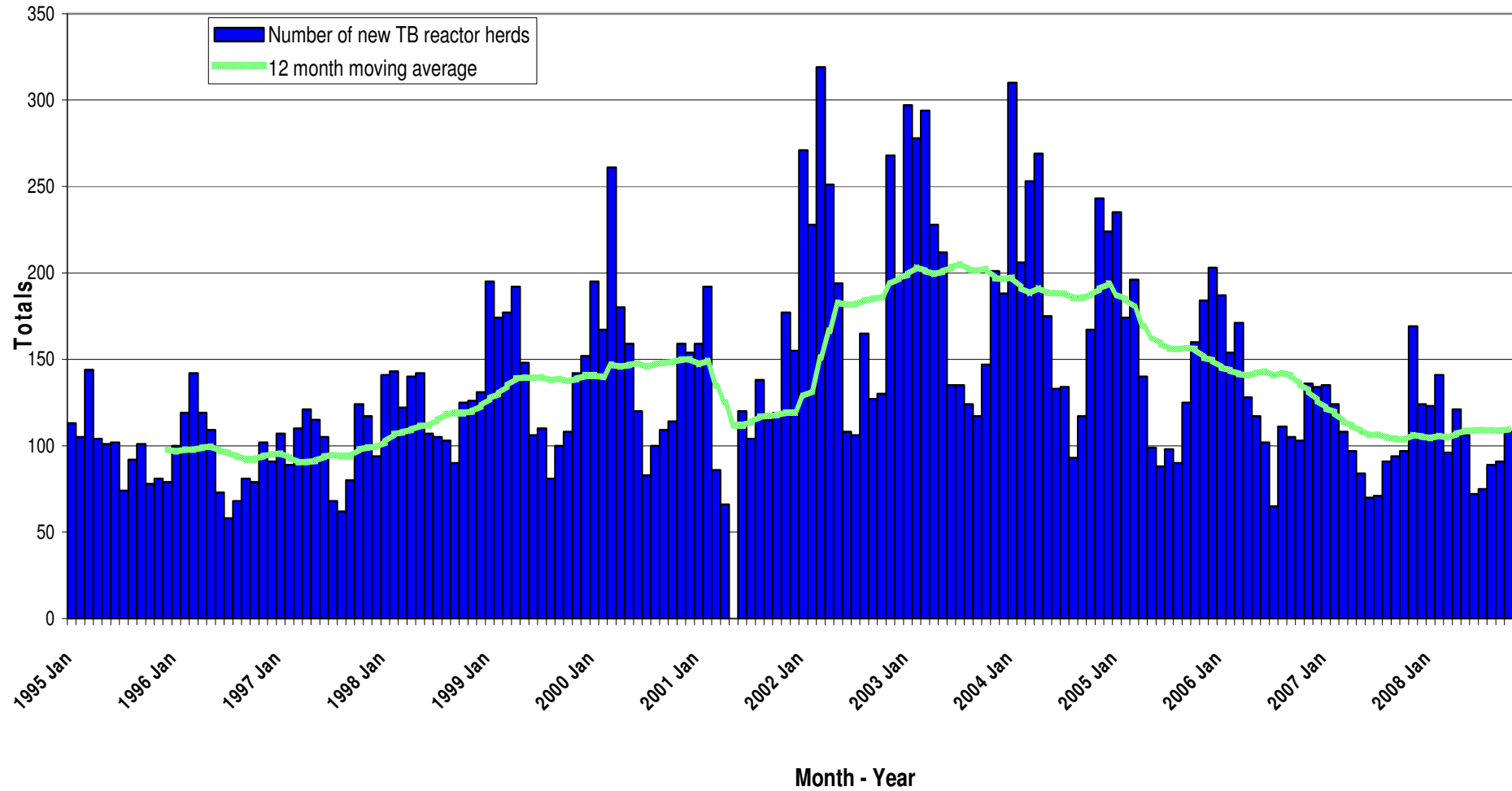
**TB Herd and Animal Incidence:
(12 month moving average: January 2002 to October 2008)**



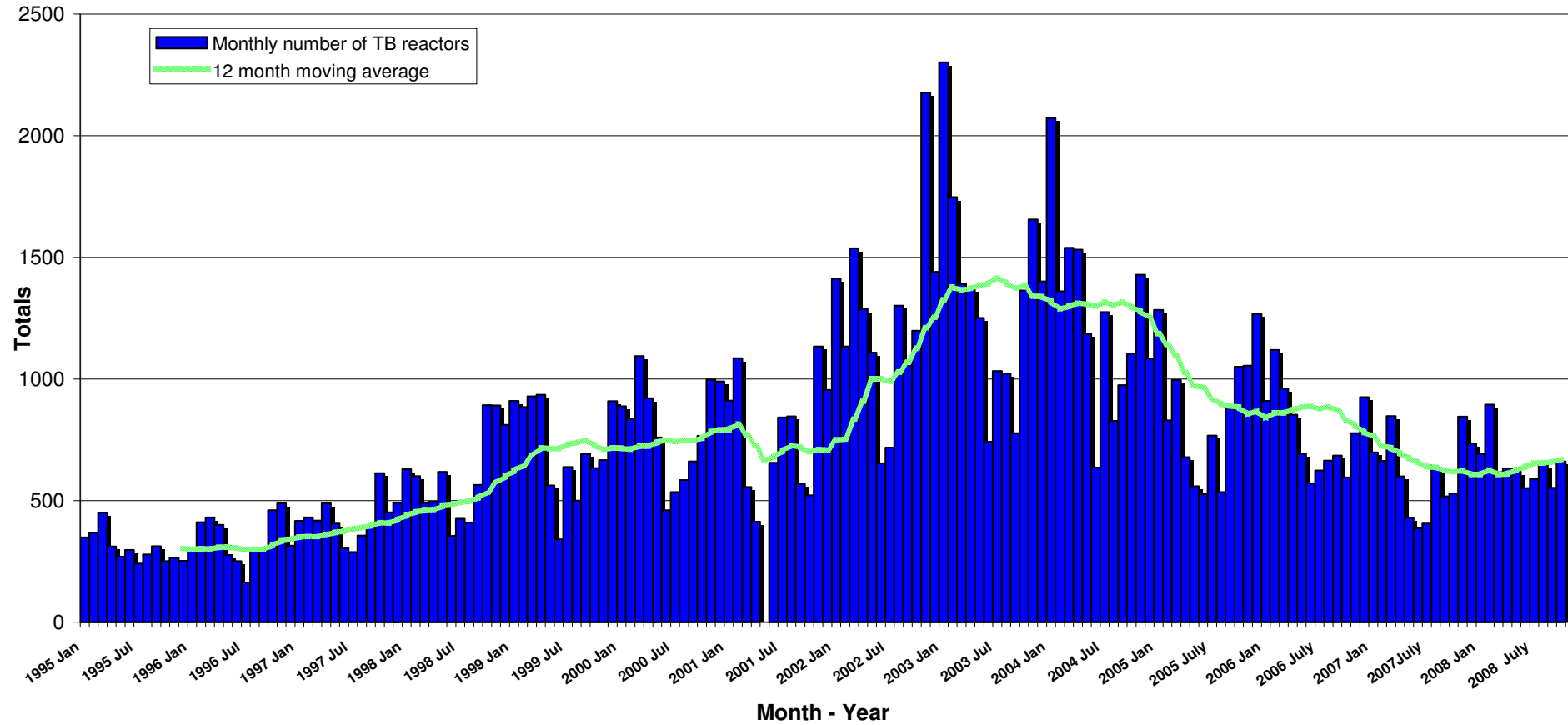


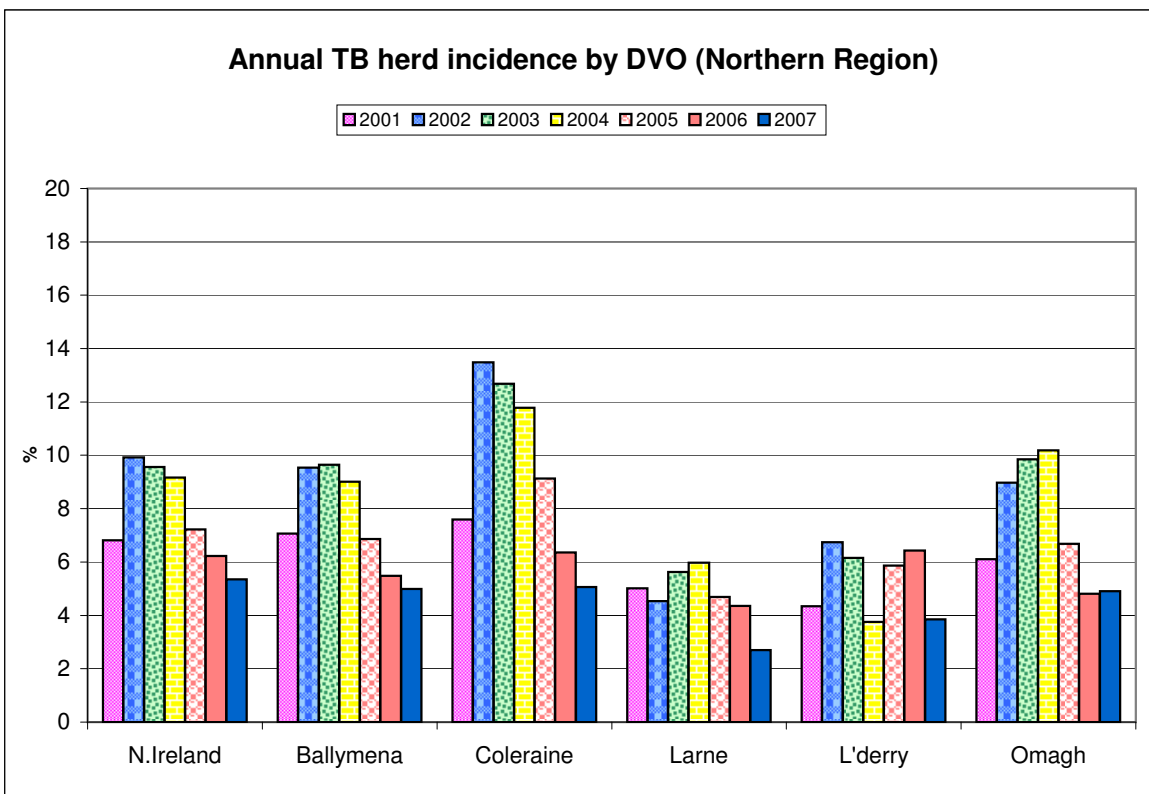
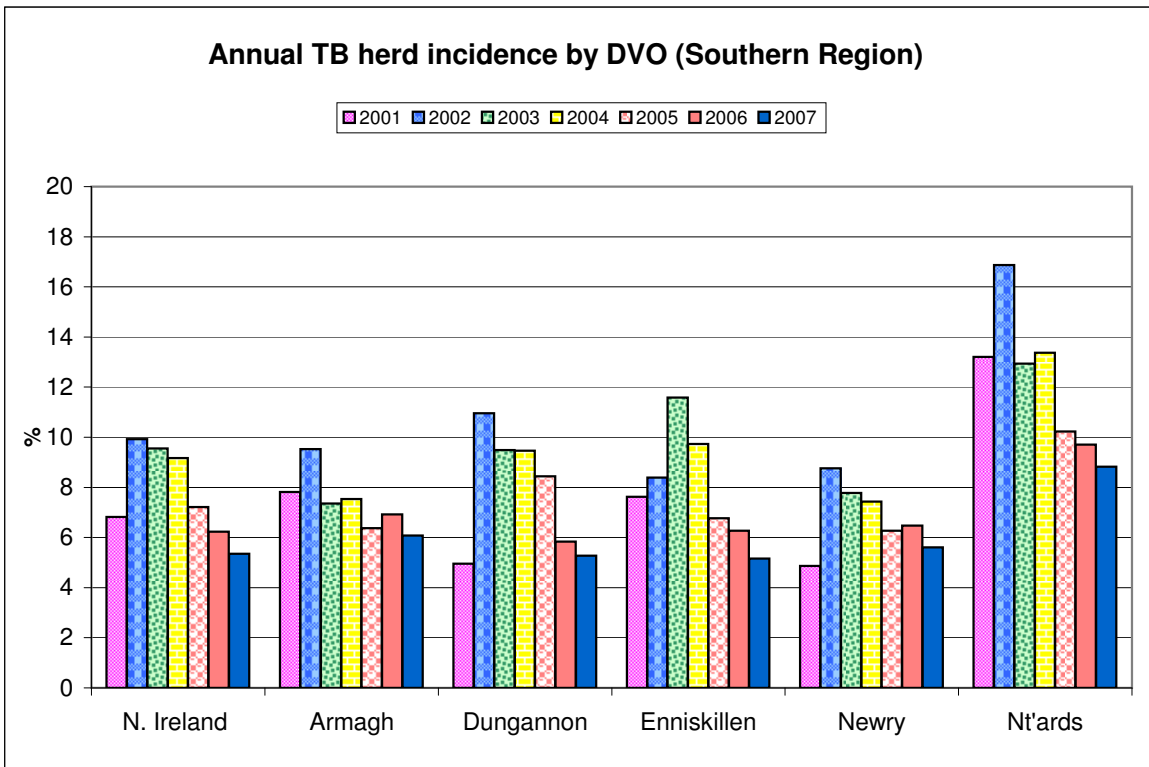


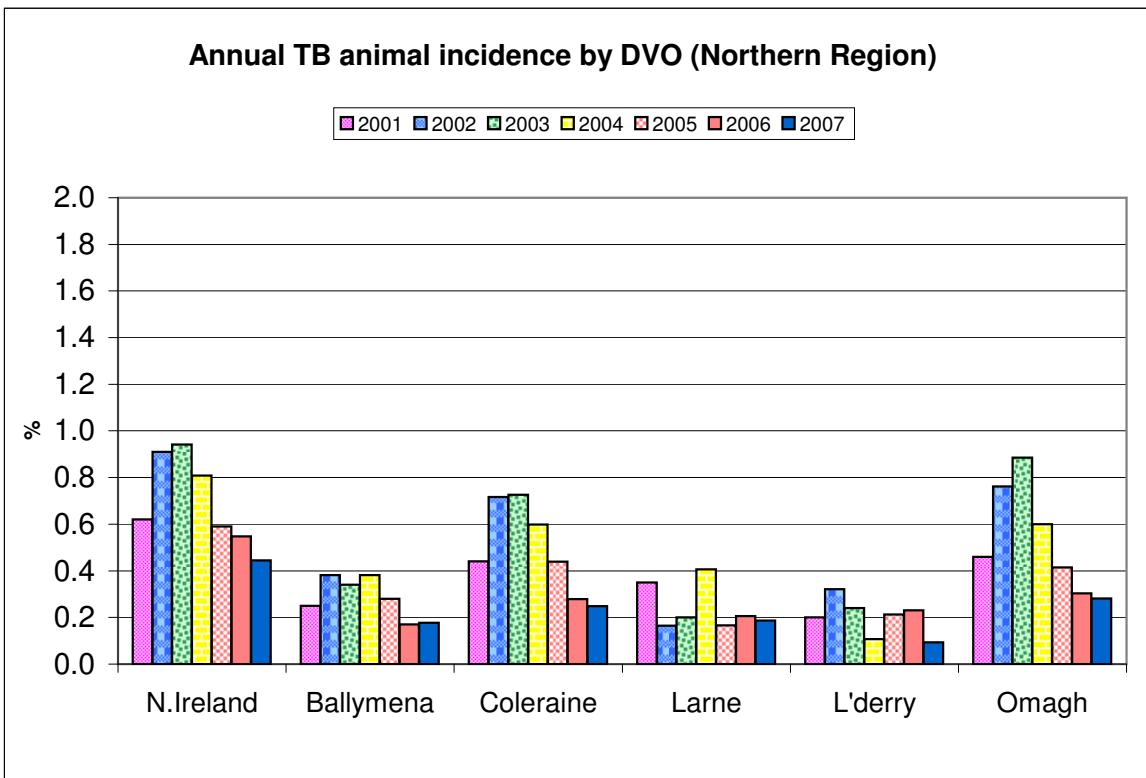
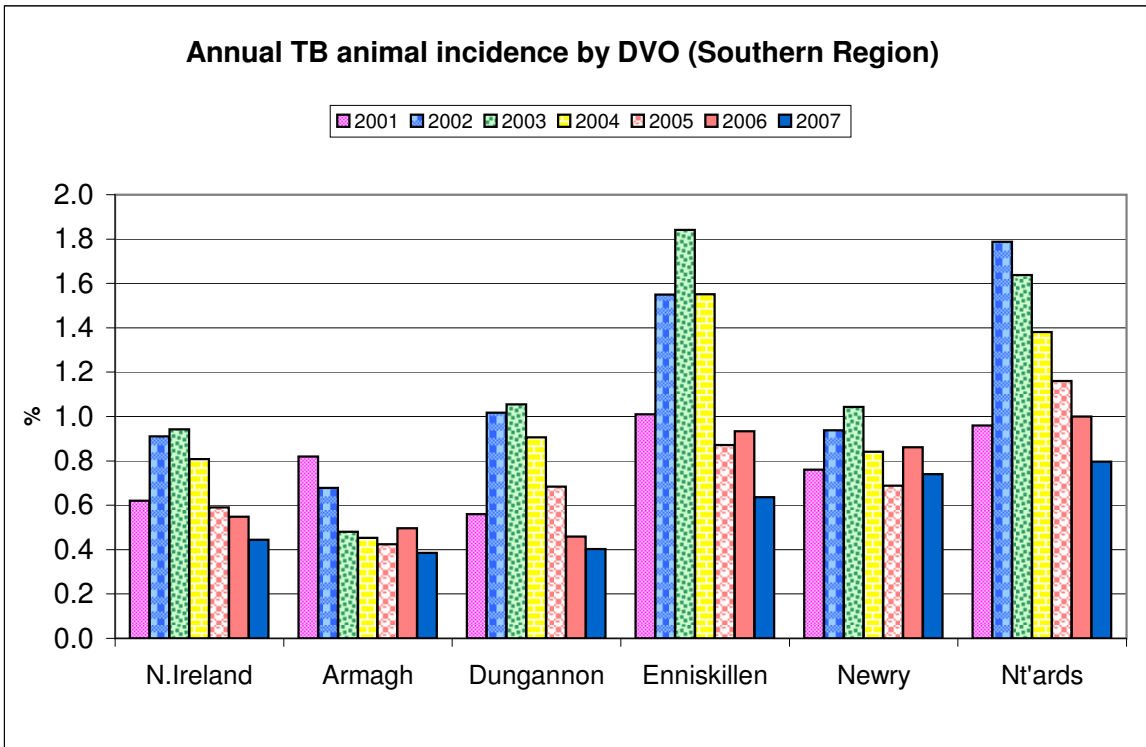
New TB Reactor Herds: January 1995 to October 2008



TB Reactors: January 1995 to October 2008







Month = October 2008

Ref.	Total	Armagh	Ballymena	Coleraine	Dungannon	Enniskillen	Larne	L'derry	Newry	Nt'ards	Omagh	
d1	No. of herds with TB reactors during month	181	14	6	16	14	38	8	4	43	26	12
d2	No. of new reactor herds during month	108	7	4	12	10	26	3	4	22	11	9
d3	No. of new reactor herds since start of year	1022	75	44	94	107	162	41	36	210	126	127
d4	No. of new reactor herds in the previous 12 months	1315	101	61	137	140	189	53	48	246	171	169
d26	No. of new reactor herds in the previous 13-24 months	1241	148	71	129	159	169	48	25	197	154	141
d5	No. of TB reactor animals during month	661	26	9	29	26	181	25	32	222	95	16
d6	No. of TB reactor animals since start of year	6459	566	131	516	521	1128	191	129	1380	1214	683
d7	No. of reactor animals in the previous 12 months	8039	653	188	673	672	1354	244	154	1632	1612	857
d27	No. of reactor animals in the previous 13-24 months	7421	743	192	551	833	1244	238	47	1658	1374	541
d8	Herd Prevalence (%)	5.86	5.11	3.51	5.03	3.89	8.76	4.76	3.42	7.85	8.70	3.01
d20	Cumulative herd incidence in year (%)	5.34	3.35	3.12	3.68	3.80	5.27	2.41	4.07	5.77	6.93	4.08
d9	Annual herd incidence over the last 12 months (%)	5.66	4.52	4.32	5.37	4.97	6.14	3.11	5.42	6.75	9.41	5.44
d28	Annual herd incidence over the last 13-24 months (%)	5.25	6.51	4.95	4.84	5.55	5.50	2.73	2.89	5.38	8.07	4.46
d10	2007 Herd Incidence (%)	5.35	6.08	4.99	5.07	5.28	5.16	2.70	3.85	5.61	8.83	4.90
d11	2006 Herd Incidence (%)	6.23	6.92	5.48	6.36	5.84	6.27	4.36	6.43	6.48	9.70	4.81
d38	2005 Herd Incidence (%)	7.22	6.38	6.87	9.13	8.45	6.77	4.69	5.86	6.28	10.22	6.68
d30	2004 Herd Incidence (%)	9.17	7.54	9.01	11.78	9.47	9.73	5.97	3.75	7.44	13.37	10.19
d16	2003 Herd Incidence (%)	9.56	7.35	9.65	12.68	9.50	11.58	5.63	6.16	7.78	12.94	9.85
d21	Cumulative animal incidence in year (%)	0.493	0.397	0.163	0.328	0.329	0.799	0.208	0.256	0.692	0.810	0.406
d12	Annual animal incidence over the last 12 months (%)	0.498	0.385	0.167	0.327	0.346	0.793	0.178	0.239	0.719	0.924	0.412
d29	Annual animal incidence over the last 13-24 months (%)	0.451	0.431	0.170	0.255	0.421	0.717	0.167	0.074	0.742	0.771	0.176
d13	2007 Animal Incidence (%)	0.445	0.385	0.177	0.248	0.403	0.637	0.186	0.093	0.740	0.797	0.282
d14	2006 Animal Incidence (%)	0.548	0.496	0.170	0.279	0.459	0.934	0.205	0.230	0.862	1.000	0.304
d39	2005 Animal Incidence (%)	0.590	0.424	0.279	0.440	0.684	0.871	0.167	0.213	0.688	1.160	0.415

d31	2004 Animal Incidence (%)	0.809	0.453	0.381	0.598	0.907	1.551	0.406	0.108	0.842	1.380	0.600
d15	2003 Animal Incidence (%)	0.942	0.480	0.341	0.726	1.055	1.842	0.200	0.240	1.043	1.638	0.886
d34	APT during current month	3.20	1.42	0.63	1.11	1.13	7.04	2.57	3.79	7.04	3.82	0.65
d22	APT since start of year	3.49	2.80	1.35	2.61	2.49	5.43	1.77	2.02	4.54	5.20	3.01
d17	Current 12 month moving average APT	3.33	2.53	1.32	2.49	2.49	5.03	1.51	1.84	4.38	5.49	2.92
d19	2007 APT	3.08	2.49	1.44	1.94	2.88	4.24	1.56	0.77	4.69	4.95	2.20
d42	2006 APT	3.49	3.00	1.30	2.03	3.06	5.52	1.60	1.66	5.23	5.66	2.16
d40	2005 APT	3.65	2.58	2.01	2.86	4.28	5.44	1.25	1.67	4.08	6.28	2.73
d32	2004 APT	4.86	2.88	2.58	3.72	5.59	8.62	2.91	0.79	5.00	7.69	3.87
d18	2003 APT	6.10	3.17	2.39	4.83	7.19	11.62	1.59	1.77	6.29	9.84	6.03
d23	No. negative in contacts since start of year	525	96	0	34	6	27	7	5	85	181	84
d25	No. negative in contacts during 2007	589	38	3	15	49	59	14	1	40	248	122
d43	No. negative in contacts during 2006	689	4	1	58	122	106	2	14	83	240	59
d41	No. negative in contacts during 2005	1208	25	8	93	48	377	5	7	12	584	49
d33	No. negative in contacts during 2004	673	37	26	18	15	191	2	1	140	187	56
d24	No. negative in contacts during 2003	259	7	5	8	3	53	8	1	76	43	55
d37	Reactor removal time 2008	11.0	10.2	8.9	8.9	10.2	11.6	9.5	8.9	12.3	12.3	8.2
d45	Reactor removal time 2007	12.3	12.3	12.3	11.0	12.3	8.9	13.0	8.9	13.0	13.0	8.9
d35	Reactor removal time 2006	13.0	12.3	9.6	11.6	13.7	11.6	13.0	10.3	13.7	13.7	9.6
D44	Reactor removal time 2005	13.0	10.3	13.0	13.0	13.0	13.0	14.4	13.0	15.8	12.3	11.6
d36	Reactor removal time 2004	16.4	13.7	13.7	14.4	18.5	17.1	18.5	14.4	16.4	13.7	17.8

Tuberculosis: number of reactor herds by month and by DVO in 2008 and unique herd breakdowns during the year

2008		DVO_CODE										
Year	Month	Armagh	Ballymena	Coleraine	Dungannon	Enniskillen	Larne	L'Derry	Newry	Nt'Ards	Omagh	Total
2008	1	10	6	14	16	19	9	4	17	6	22	123
2008	2	11	4	15	16	19	7	3	28	15	23	141
2008	3	6	11	5	6	15	4	5	15	14	15	96
2008	4	7	7	12	12	20	4	2	26	14	17	121
2008	5	13	6	10	10	11	3	7	23	10	13	106
2008	6	4	2	6	2	13	1	6	19	11	8	72
2008	7	7	1	4	13	7	2	2	17	13	9	75
2008	8	4	1	7	8	13	4	2	25	17	8	89
2008	9	6	2	9	14	19	4	1	18	15	3	91
2008	10	7	4	12	10	26	3	4	22	11	9	108
2008	11											0
2008	12											0
Total		75	44	94	107	162	41	36	210	126	127	1022

Unique Herd Breakdowns		DVO_CODE										
Year	Armagh	Ballymena	Coleraine	Dungannon	Enniskillen	Larne	L'Derry	Newry	Nt'Ards	Omagh	Total Herds	
2008	108	53	117	136	203	47	42	281	188	152	1327	

Tuberculosis: number of reactor herds by month and by DVO in 2007 and unique herd breakdowns during the year

2007		DVO_CODE										
Year	Month	Armagh	Ballymena	Coleraine	Dungannon	Enniskillen	Larne	L'Derry	Newry	Nt'Ards	Omagh	Total
2007	1	17	11	15	24	13	10	0	20	14	11	135
2007	2	12	10	14	12	17	5	7	15	13	19	124
2007	3	10	5	13	15	25	3	5	12	10	10	108
2007	4	14	6	4	11	12	4	4	19	8	15	97
2007	5	11	3	8	7	9	1	1	16	13	15	84
2007	6	9	2	7	13	8	4	0	15	9	3	70
2007	7	7	3	5	6	11	1	2	17	7	12	71
2007	8	9	6	12	6	16	3	0	19	14	6	91
2007	9	9	3	10	15	9	3	1	20	16	8	94
2007	10	13	6	4	10	14	0	1	18	18	13	97
2007	11	17	10	31	19	18	5	7	20	25	17	169
2007	12	9	7	12	14	9	7	5	16	20	25	124
Total		137	72	135	152	161	46	33	207	167	154	1264

Unique Herd Breakdowns		DVO_CODE										
Year	Armagh	Ballymena	Coleraine	Dungannon	Enniskillen	Larne	L'Derry	Newry	Nt'Ards	Omagh	Total Herds	
2007	181	82	169	196	221	57	35	277	239	176	1633	

Tuberculosis: number of reactor herds by month and by DVO in 2006 and unique herd breakdowns during the year

2006		DVO_CODE										
Year	Month	Armagh	Ballymena	Coleraine	Dungannon	Enniskillen	Larne	L'Derry	Newry	Nt'Ards	Omagh	Total
2006	1	17	14	29	15	27	5	9	28	15	28	187
2006	2	10	7	24	15	22	8	15	16	24	13	154
2006	3	18	13	18	21	20	12	7	27	18	17	171
2006	4	13	7	12	16	18	12	6	19	15	10	128
2006	5	10	7	8	8	16	10	5	23	18	12	117
2006	6	15	7	10	5	11	1	1	24	17	11	102
2006	7	4	0	5	9	6	5	4	16	10	6	65
2006	8	14	1	11	13	13	3	1	31	14	10	111
2006	9	15	5	10	16	12	1	4	22	9	11	105
2006	10	11	5	8	14	19	5	4	12	17	8	103
2006	11	18	7	15	23	20	6	2	13	15	17	136
2006	12	19	9	22	17	15	8	2	13	17	12	134
Total		164	82	172	172	199	76	60	244	189	155	1513

Unique Herd Breakdowns		DVO_CODE										
Year	Armagh	Ballymena	Coleraine	Dungannon	Enniskillen	Larne	L'Derry	Newry	Nt'Ards	Omagh	Total Herds	
2006	203	98	214	248	267	92	70	329	280	197	1998	

A herd is defined as being a TB reactor herd if it had at least one TB reactor animal in that month and no TB reactor animals during the previous 12 months.

A TB unique herd breakdown is defined as a herd which has had at least one TB reactor during the specified calendar year irrespective of any TB reactors during the previous calendar year.

Tuberculosis: number of reactor animals by month and by DVO 2008

2008	DVO_CODE											Total
Year	Month	Armagh	Ballymena	Coleraine	Dungannon	Enniskillen	Larne	L'Derry	Newry	Nt'Ards	Omagh	Total
2008	1	77	26	65	86	124	15	19	80	104	96	692
2008	2	107	6	96	86	126	31	13	173	126	131	895
2008	3	42	38	62	42	60	9	8	99	173	84	617
2008	4	38	12	58	49	111	30	14	180	58	83	633
2008	5	49	25	38	32	79	27	10	98	192	70	620
2008	6	24	3	85	43	73	2	6	157	54	105	552
2008	7	79	3	12	48	119	10	12	114	135	57	589
2008	8	37	5	49	48	115	32	12	186	131	32	647
2008	9	87	4	22	61	140	10	3	71	146	9	553
2008	10	26	9	29	26	181	25	32	222	95	16	661
2008	11											0
2008	12											0
Total		566	131	516	521	1128	191	129	1380	1214	683	6459

Tuberculosis: number of reactor animals by month and by DVO 2007

2007	DVO_CODE											Total
Year	Month	Armagh	Ballymena	Coleraine	Dungannon	Enniskillen	Larne	L'Derry	Newry	Nt'Ards	Omagh	Total
2007	1	36	16	93	162	79	45	0	107	120	41	699
2007	2	82	14	67	83	114	29	11	122	92	50	664
2007	3	36	23	96	77	141	15	5	265	142	47	847
2007	4	71	24	20	76	45	60	5	175	76	48	600
2007	5	40	17	17	49	49	1	1	133	91	32	430
2007	6	30	2	12	72	78	12	0	74	74	32	386
2007	7	67	6	9	10	60	5	3	127	87	32	406
2007	8	137	31	39	42	102	26	3	127	98	34	639
2007	9	39	5	18	64	119	6	1	137	95	34	518
2007	10	41	8	6	18	96	2	4	150	151	54	530
2007	11	45	19	90	82	139	9	8	140	209	104	845
2007	12	42	38	67	69	87	44	17	112	189	70	735
Total		666	203	534	804	1109	254	58	1669	1424	578	7299

Tuberculosis: number of reactor animals by month and by DVO 2006

2006	DVO_CODE											Total
Year	Month	Armagh	Ballymena	Coleraine	Dungannon	Enniskillen	Larne	L'Derry	Newry	Nt'Ards	Omagh	Total
2006	1	87	25	84	100	192	17	21	135	147	102	910
2006	2	40	23	65	73	301	32	67	282	201	36	1120
2006	3	76	25	64	159	148	51	15	131	212	80	961
2006	4	65	29	60	92	170	49	14	201	137	36	853
2006	5	52	14	25	53	87	21	11	260	131	39	693
2006	6	74	19	25	43	57	6	1	204	117	26	572
2006	7	76	9	15	47	58	44	6	123	184	63	625
2006	8	160	1	26	76	103	12	2	150	108	27	665
2006	9	69	9	38	64	135	10	5	190	93	73	686
2006	10	43	5	37	81	93	18	4	100	179	36	596
2006	11	88	14	35	111	175	19	3	108	152	72	777
2006	12	76	32	139	69	186	18	11	133	196	65	925
Total		906	205	613	968	1705	297	160	2017	1857	655	9383

**A TB reactor animal is defined as an animal where the manual interpretation field for a skin test is positive ('P') with the first test date being taken as the time at which the animal became a reactor.
Animals with lesions at routine slaughter ('LRS') are not taken into account.**

Month = October 2008

Ref.		Total	Armagh	Ballymena	Coleraine	Dungannon	Enniskillen	Larne	L'derry	Newry	Nt'ards	Omagh
b16	No. herds with any test completed in month	3544	314	198	370	410	481	208	135	608	351	469
b17	No. herds with any test, from start of year	19936	2011	1121	2168	2392	2606	1306	730	3297	1624	2681
b29	All herds with any test, from start of year	20826	2117	1184	2280	2476	2673	1366	770	3435	1734	2791
b18	No. herds with any test, from start of year (no cattle)	890	106	63	112	84	67	60	40	138	110	110
b19	No. herds with herd test completed in month	3088	274	171	318	360	434	168	117	548	299	399
b20	No. herds with herd test, from start of year	19122	1954	1037	2041	2285	2520	1191	705	3239	1571	2579
b30	All herds with herd test, from start of year	20029	2066	1102	2152	2371	2587	1253	746	3378	1681	2693
b21	No. herds with herd test, from start of year (no cattle)	907	112	65	111	86	67	62	41	139	110	114
b22	No. herds with herd test during last 12 months	23249	2236	1411	2551	2817	3076	1704	885	3642	1818	3109
b31	No. herds with herd test during last 13-24 months	23659	2273	1434	2668	2864	3070	1756	864	3664	1908	3158
b23	No. herds with herd test during 2007	23642	2253	1444	2664	2881	3119	1702	858	3690	1891	3140
b24	No. herds with herd test during 2006	24301	2369	1496	2706	2944	3173	1743	933	3766	1948	3223
b39	No. herds with herd test during 2005	24820	2430	1529	2826	3031	3204	1771	904	3840	2005	3280
b32	No. herds with herd test during 2004	25349	2468	1588	2877	3127	3277	1893	960	3833	2019	3307
b28	No. herds with herd test during 2003	24651	2393	1523	2776	2991	3118	1848	926	3857	1971	3248
b25	No. herds with any risk test completed	8744	1159	415	767	865	1146	393	189	1868	915	1027
b26	No. herds with herd risk test completed	6003	920	178	407	481	864	122	67	1577	685	702
b27	No. herds with restricted herd test completed	2399	265	107	217	285	275	94	71	454	341	290

Month = October 2008

Ref	Total	Armagh	Ballymena	Coleraine	Dungannon	Enniskillen	Larne	L'derry	Newry	Nt'ards	Omagh	
c1	Total number of tests in current month	3868	365	209	383	446	519	226	139	670	401	508
c2	Total number of tests from start of year	33300	3727	1715	3417	3835	4211	1988	1113	5846	3125	4323
c3	No. tests during the same time period in the previous year	32905	3859	1728	3456	3936	4105	2057	946	5586	3307	3925
c4	% change between years	1.2	-3.5	-0.8	-1.1	-2.6	2.5	-3.5	15.0	4.4	-5.8	9.2
c5	No. tests in the previous 12 months	42275	4606	2324	4374	4903	5405	2726	1422	7199	3865	5451
c6	No. animal tests in current month	206779	18311	14374	26233	22924	25696	9739	8445	31553	24856	24648
c7	No. animal tests from start of year	1850050	201820	97048	198040	209203	207814	107694	63782	304196	233612	226841
c8	No. animal tests during the same time period in the previous year	1805292	211072	95787	203761	218312	199798	109392	55584	287245	227915	196426
c9	% change between years	2.4	-4.6	1.3	-2.9	-4.4	3.9	-1.6	12.9	5.6	2.4	13.4
c10	No. animal tests in previous 12 months	2415000	257989	142718	269797	270178	269309	161580	83693	372681	293486	293569
c11	No. cattle eligible for TB testing	1655311	157105	117330	215711	194426	168870	144554	65872	212062	170163	209217
c12	No. cattle herds eligible for TB testing	26917	2653	1657	2993	3242	3418	2022	1054	4151	2176	3551
c13	No. restricted herd tests during month	378	38	13	28	43	52	13	17	76	62	36
c14	No. animals tested	46941	3013	2168	5040	4937	6115	1923	1563	9226	8613	4343
c15	No. herd tests during month	3088	274	171	318	360	434	168	117	548	299	399
c16	No. animals tested	204744	18119	14279	26047	22646	25434	9555	8354	31218	24615	24477
c17	No. individual tests during month	778	91	38	65	86	85	58	22	122	102	109
c18	No. animals tested	2035	192	95	186	278	262	184	91	335	241	171
c23	No. animals TB tested since start of year	1309467	142402	80197	157209	158454	141217	91938	50338	199352	149834	168210
c19	No. animals TB tested in previous 12 months	1612856	169493	112284	205535	194234	170723	136889	64429	226848	174472	207997
c24	No. animals TB tested in previous 13-24 months	1647150	172339	112815	216199	197880	173577	142575	63729	223500	178220	307480
c20	No. animals TB tested in 2007	1640552	172852	114560	215201	199652	174151	136324	62184	225462	178638	205208
c21	No. animals TB tested in 2006	1711870	182776	120699	220008	210854	182488	144582	69516	234093	185689	215645
c26	No. animals TB tested in 2005	1776064	183292	125632	237269	222514	184630	151248	66659	234585	191843	226983
c25	No. animals TB tested in 2004	1865762	185178	134129	249856	240990	198531	162067	76106	239332	202259	238461
c22	No. animals TB tested in 2003	1705166	164849	122113	231782	204696	173906	148198	69886	226710	187427	215451

Explanatory Comments for Tuberculosis Statistics - B. Testing Herds

B16	No. herds with any test completed in month	Test of any disease status and size (herd or animal-level). Tests with no animals are excluded.
B17	No. herds with any test, from start of year	Test of any disease status and size (herd or animal-level) carried out on a herd since 1st January. Tests with no animals are excluded.
B29	All herds with any test, from start of year	Skin test of any disease status and size (herd or animal-level) carried out on a herd since 1st January. Tests with no animals are included.
B18	No. herds with any test, from start of year (no cattle)	Herd or individual test of any disease status (routine, risk or restricted) where no cattle were recorded at all such tests since 1st January
B19	No. herds with herd test completed in month	Herd level test of any disease status (routine, risk or restricted) completed during the above month. Tests with no animals are excluded.
B20	No. herds with herd test, from start of year	Herd level test of any disease status (routine, risk or restricted) completed since 1st January. Tests with no animals are excluded.
B30	All herds with herd test, from start of year	Herd level test of any disease status (routine, risk or restricted) completed since 1st January. Tests with no animals are included.
B21	No. herds with herd test, from start of year (no cattle)	Herd level test of any disease status (routine, risk or restricted) where no cattle were recorded at all such herd tests since 1st January.
B22	No. herds with herd test during last 12 months	Herd level test of any disease status (routine, risk or restricted) completed in the 12 month period from the above month. Tests with no animals are excluded.
B31	No. herds with herd test during last 13-24 months	Herd level test of any disease status (routine, risk or restricted) completed in the 13-24 months from the above month. Tests with no animals are excluded.
B39	No. herds with herd test during 2005	Herd level test of any disease status (routine, risk or restricted) completed in the calendar year 2005. Tests with no animals are excluded.
B32	No. herds with herd test during 2004	Herd level test of any disease status (routine, risk or restricted) completed in the calendar year 2004. Tests with no animals are excluded.
B28	No. herds with herd test during 2003	Herd level test of any disease status (routine, risk or restricted) completed in the calendar year 2003. Tests with no animals are excluded.
B23	No. herds with herd test during 2007	Herd level test of any disease status (routine, risk or restricted) completed in the calendar year 2007. Tests with no animals are excluded.
B24	No. herds with herd test during 2006	Herd level test of any disease status (routine, risk or restricted) completed in the calendar year 2006. Tests with no animals are excluded.
B25	No. herds with any risk test completed	Herd has had a herd or individual level risk test since start of calendar year and number tested > 0
B26	No. herds with herd risk test completed	Herd has had a herd level risk test since start of calendar year and number tested > 0.
B27	No. herds with restricted herd test completed	Herd has had a restricted herd test (RHT, RH1, RH2) since start of calendar year and number tested

Explanatory Comments for Tuberculosis Statistics - C. Testing Animals

Ref	Data Title	Explanation
C1	Total number of tests in current month	Number of herds and individual tests performed in the month stated above. Tests with no animals are excluded
C2	Total number of tests from start of year	From 1st January. Tests with no animals are excluded.
C3	No. tests during the same time period in the previous year	From 1st January of previous year. Tests with no animals are excluded.
C4	% change between years	Difference between the number of tests carried out during the current year and the number carried out in the previous expressed as a percentage.
C5	No. tests in the previous 12 months	Last 12 month period from the above month. Tests with no animals are excluded.
C6	No. animal tests in current month	Animal test = a count of the number of animals tested within each herd or individual test. Some animals may have been tested multiple times during the year.
C7	No. animal tests from start of year	Number of animal tests carried out since 1st January.
C8	No. animal tests during the same time period in the previous year	Number of animal tests carried out from 1st January in the previous year over the same time interval as recorded for the current year.
C9	% change between years	Difference between the number of animal tests during the current year and the number carried out in the previous expressed as a percentage.
C10	No. animal tests in previous 12 months	Last 12 month period from the above month.
C11	No. cattle eligible for TB testing	Based on the average number of animals presented at TB herd tests over last 4 years.
C12	No. cattle herds eligible for TB testing	Based on cattle being presented for a TB herd tests over last 4 years. Herds with '0' cattle are excluded.
C13	No. restricted herd tests during month	All restricted herd tests (RHT, RH1 and RH2) carried out during the above month.
C14	No. animals tested	Total of the animals reported as being tested within restricted herd tests (RHT, RH1, RH2) during the above month.
C15	No. herd tests during month	Total of the animals reported as being tested within all herd tests during the above month.
C16	No. animals tested	Total of the animals reported as being tested within all herd tests during the above month.
C17	No. individual tests during month	Total of the animals reported as being tested within all individual tests during the above month.
C18	No. animals tested	Total of the animals reported as being tested within all individual tests during the above month.
C23	No. animals TB tested since start of year	Animals identified as having had at least one TB skin test since the start of the calendar year. Due to the same animals being sampled in different DVO areas, the 'Total' is not the sum of the DVO figures.
C19	No. animals TB tested in previous 12 months	Animals identified as having had at least one TB skin test during the last 12 month period from the above month. Due to the same animals being sampled in different DVO areas, the 'Total' is not the sum of the DVO figures.
C24	No. animals TB tested in previous 13-24 months	Animals identified as having had at least one TB skin test during the last 13-24 months from the above month. Due to the same animals being sampled in different DVO areas, the 'Total' is not the sum of the DVO figures.
C26	No. animals TB tested in 2005	Animals identified as having had at least one TB skin test during the 2005 calendar year. Due to the same animals being sampled in different DVO areas, the 'Total' is not the sum of the DVO figures.
C25	No. animals TB tested in 2004	Animals identified as having had at least one TB skin test during the 2004 calendar year. Due to the same animals being sampled in different DVO areas, the 'Total' is not the sum of the DVO figures.
C22	No. animals TB tested in 2003	Animals identified as having had at least one TB skin test during the 2003 calendar year. Due to the same animals being sampled in different DVO areas, the 'Total' is not the sum of the DVO figures.
C20	No. animals TB tested in 2007	Animals identified as having had at least one TB skin test during the 2007 calendar year. Due to the same animals being sampled in different DVO areas, the 'Total' is not the sum of the DVO figures.
C21	No. animals TB tested in 2006	Animals identified as having had at least one TB skin test during the 2006 calendar year. Due to the same animals being sampled in different DVO areas, the 'Total' is not the sum of the DVO figures.

Explanatory Comments for Tuberculosis Statistics - D. Results

Ref	Data Title	Explanation
D1	No. of herds with TB reactors during month	A herd is included in this figure if the herd number had a TB skin test reactor during the above month.
D2	No. of new reactor herds during month	A herd is defined as being a TB reactor herd if it had at least one TB reactor animal in that month and no TB reactor animals during the previous 12 months.
D3	No. of new reactor herds since start of year	= Since 1st January
D4	No. of new reactor herds in the previous 12 months	Last 12 month period from the above month.
D26	No. of new reactor herds in previous 13-24 months	Last 13-24 month period from the above month.
D5	No. of TB reactor animals during month	A TB reactor animal is defined as an animal where the manual interpretation field for a skin test is positive ('P') with the first test date being taken as the time at which the animal became a reactor. Currently animals with lesions at routine slaughter (*LRS*) are not taken into account
D6	No. of TB reactor animals since start of year	= Since 1st January
D7	No. of reactor animals in the previous 12 months	Last 12 month period from the above month.
D27	No. of reactor animals in previous 13-24 months	Last 13-24 month period from the above month.
D8	Herd Prevalence (%)	Number of herds with a TB reactor during the above month as a proportion of cattle herds which have presented cattle for a TB herd test during the same time period.
D20	Cumulative herd incidence in year (%)	Number of NEW reactor herds since the start of the calendar year as a proportion of cattle herds which have presented cattle for a TB herd test during the same time period.
D9	Annual herd incidence over the last 12 months (%)	Number of NEW reactor herds during the last 12 months as a proportion of cattle herds which have presented cattle for a TB herd test during the same time period.
D28	Annual herd incidence over the last 13-24 months (%)	Number of NEW reactor herds during the last 13-24 months as a proportion of cattle herds which have presented cattle for a TB herd test during the same time period.
D38	2005 Herd Incidence (%)	Number of NEW reactor herds during 2005 as a proportion of cattle herds which have presented cattle for a TB herd test during the same time period.
D30	2004 Herd Incidence (%)	Number of NEW reactor herds during 2004 as a proportion of cattle herds which have presented cattle for a TB herd test during the same time period.
D16	2003 Herd Incidence (%)	Number of NEW reactor herds during 2003 as a proportion of cattle herds which have presented cattle for a TB herd test during the same time period.
D10	2007 Herd Incidence (%)	Number of NEW reactor herds during 2007 as proportion of cattle herds which have presented cattle for a TB herd test during the same time period.
D11	2006 Herd Incidence (%)	Number of NEW reactor herds during 2006 as a proportion of cattle herds which have presented cattle for a TB herd test during the same time period.
D21	Cumulative animal incidence in year (%)	Number of reactor animals during the above month as a proportion of cattle which have been presented for a TB test during the same time period.
D12	Annual animal incidence over the last 12 months (%)	Number of reactor animals during the last 12 months as a proportion of cattle which have been presented for a TB test during the same time period.
D29	Annual animal incidence over the last 13-24 months (%)	Number of reactor animals during the last 13-24 months as a proportion of cattle which have been presented for a TB test during the same time period.
D39	2005 Animal Incidence (%)	Number of reactor animals during 2005 as a proportion of cattle which have been presented for a TB herd test during the same time period.
D31	2004 Animal Incidence (%)	Number of reactor animals during 2004 as a proportion of cattle which have been presented for a TB herd test during the same time period.
D15	2003 Animal Incidence (%)	Number of reactor animals during 2003 as a proportion of cattle which have been presented for a TB herd test during the same time period.
D13	2007 Animal Incidence (%)	Number of reactor animals during 2007 as a proportion of cattle which have been presented for a TB herd test during the same time period.
D14	2006 Animal Incidence (%)	Number of reactor animals during 2006 as a proportion of cattle which have been presented for a TB herd test during the same time period.

D34	APT during current month	= The reactor disclosure rate per 1,000 animal tests current calendar month.
D22	APT since start of year	The reactor disclosure rate per 1,000 animal tests since the start of the calendar year.
D17	Current 12 month moving average APT	The reactor disclosure rate per 1,000 animal tests. Current refers to the rate over the last 12 months.
D42	2006 APT	The reactor disclosure rate per 1,000 animal tests during the calendar year.
D40	2005 APT	The reactor disclosure rate per 1,000 animal tests during the calendar year.
D32	2004 APT	The reactor disclosure rate per 1,000 animal tests during the calendar year.
D18	2003 APT	The reactor disclosure rate per 1,000 animal tests during the calendar year.
D19	2007 APT	The reactor disclosure rate per 1,000 animal tests during the calendar year.
D23	No. negative in contacts since start of year	Number of animals taken as negative in contacts since the start of the year
D43	No. negative in contacts during 2006	The reactor disclosure rate per 1,000 animal tests during 2006.
D41	No. negative in contacts during 2005	Number of animals taken as negative in contacts during 2005
D33	No. negative in contacts during 2004	Number of animals taken as negative in contacts during 2004
D24	No. negative in contacts during 2003	Number of animals taken as negative in contacts during 2003
D25	No. negative in contacts during 2007	Number of animals taken as negative in contacts during 2007
D37	Reactor removal time 2008	Figures given are median values for working days estimated from calendar days (calendar days multiplied by 0.685). Reactors which are not yet slaughtered or where they they were first declared as reactors at slaughter are excluded.
D45	Reactor removal time 2007	Figures given are median values for working days estimated from calendar days (calendar days multiplied by 0.685). Reactors which are not yet slaughtered or where they they were first declared as reactors at slaughter are excluded.
D35	Reactor removal time 2006	Figures given are median values for working days estimated from calendar days (calendar days multiplied by 0.685). Reactors which are not yet slaughtered or where they they were first declared as reactors at slaughter are excluded.
D44	Reactor removal time 2005	Figures given are median values for working days estimated from calendar days (calendar days multiplied by 0.685). Reactors which are not yet slaughtered or where they they were first declared as reactors at slaughter are excluded.
D36	Reactor removal time 2004	Figures given are median values for working days estimated from calendar days (calendar days multiplied by 0.685). Reactors which are not yet slaughtered or where they they were first declared as reactors at slaughter are excluded.