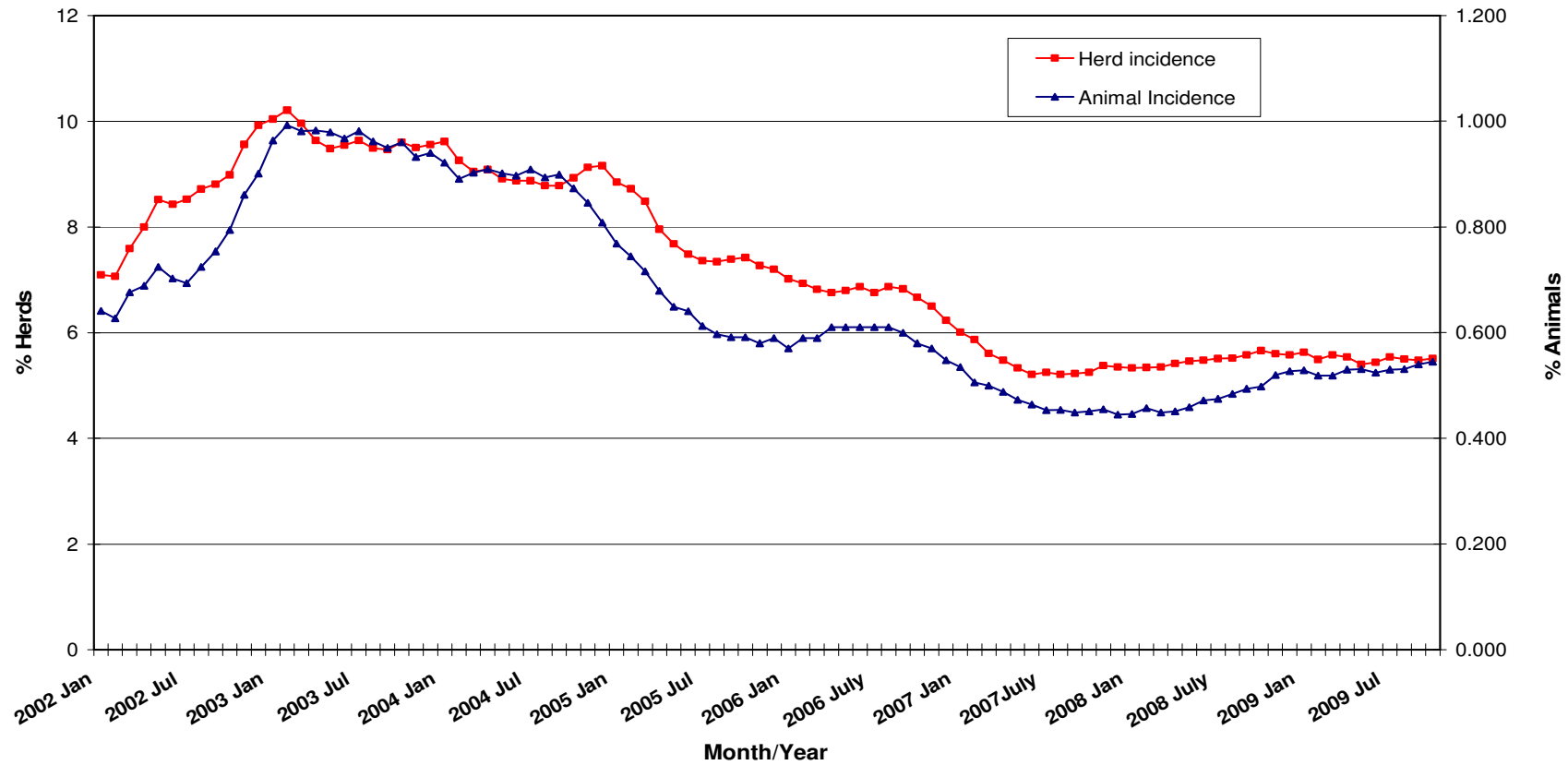
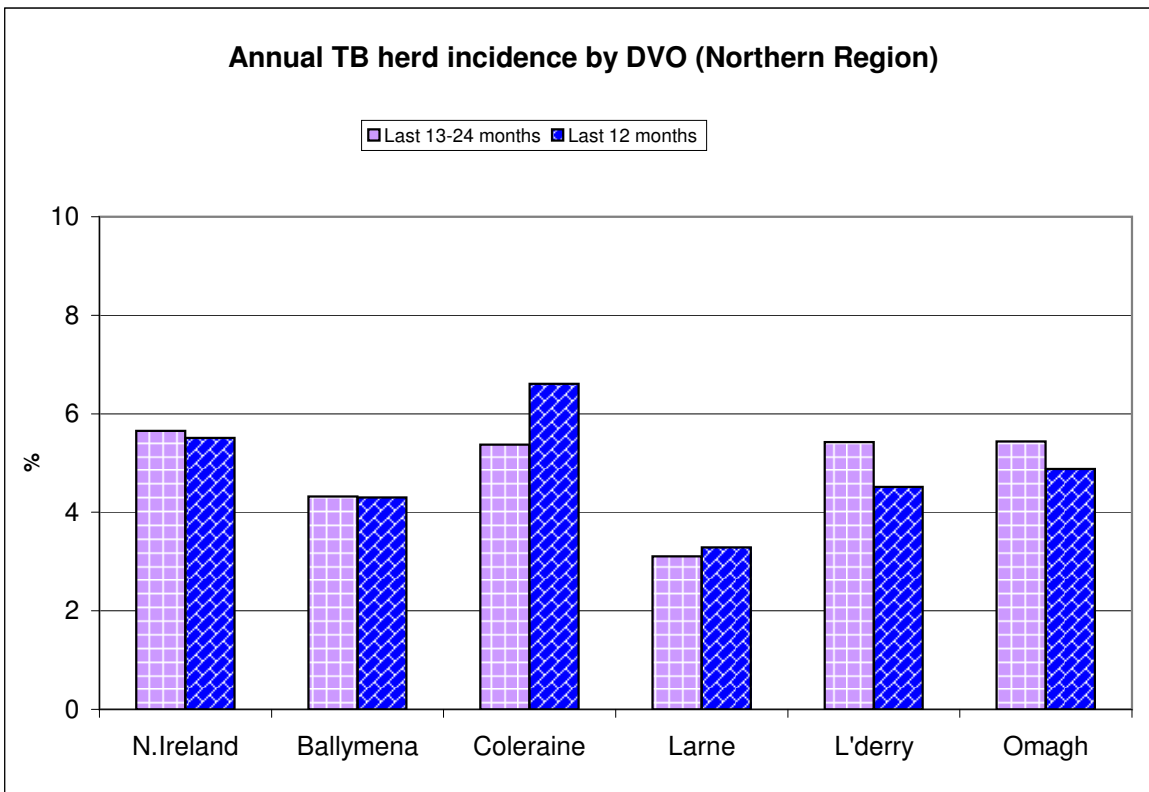
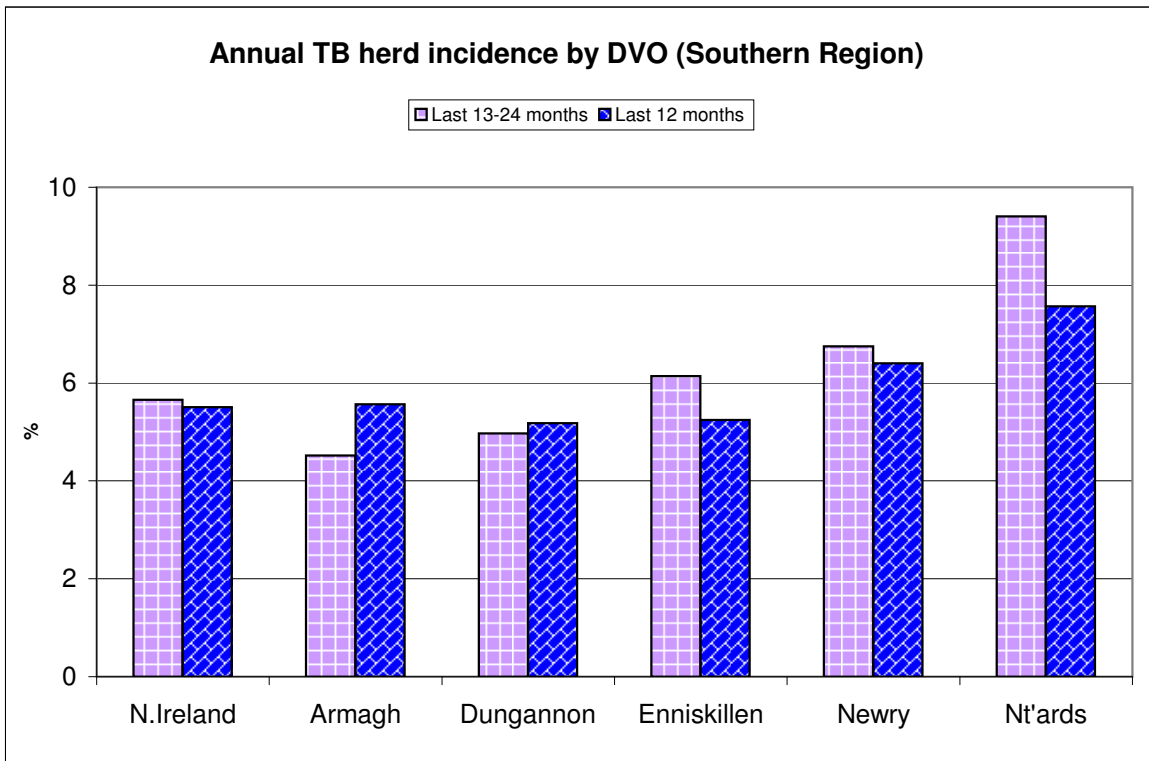


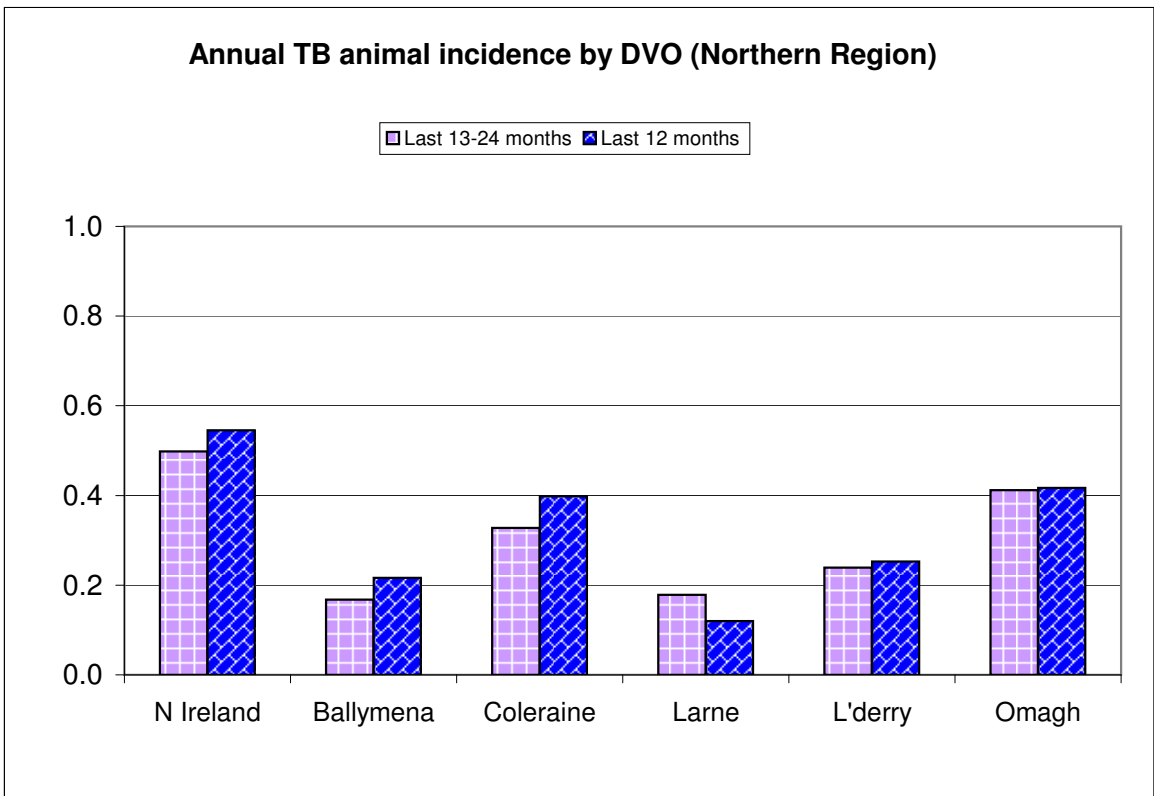
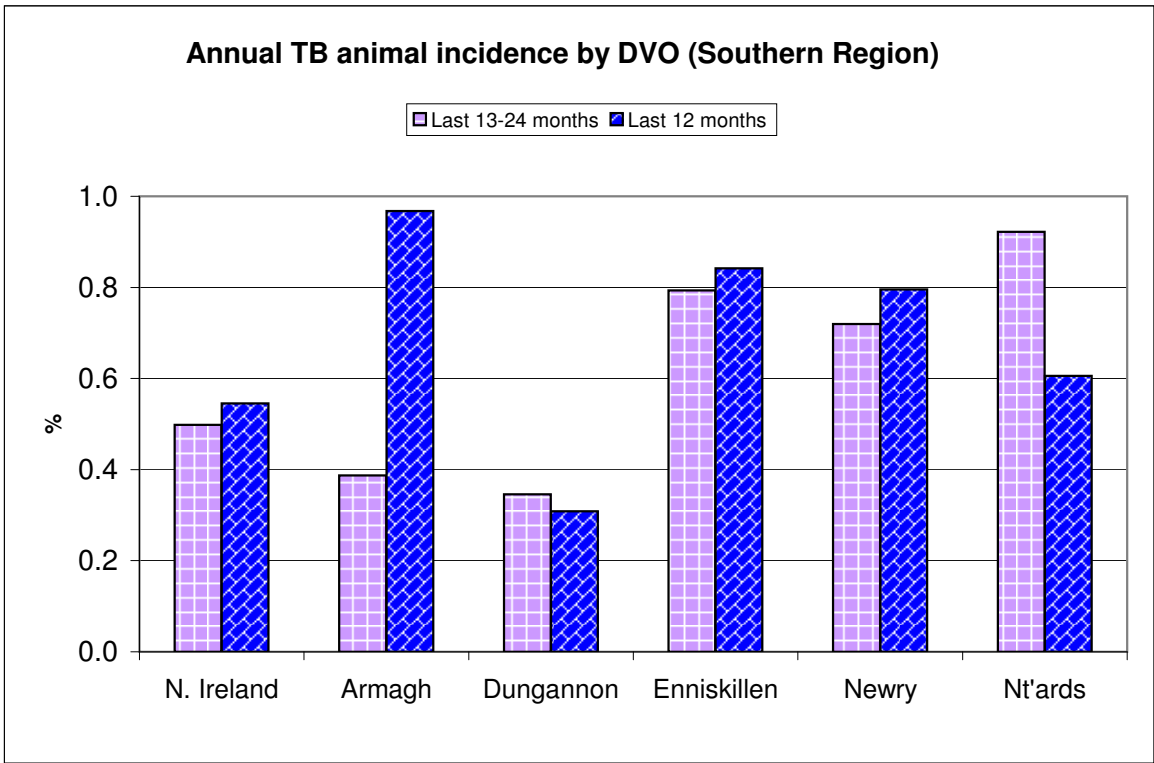
Tuberculosis: Statistics for October 2009

Tests Completed	Herds	Number of herds tested (any test), by DVO	Cumulative Statistics	
		Number of herds with herd-level test, by DVO	Cumulative Statistics	
		Number of herds with any risk test, by DVO		
		Number of herds with herd-level risk test, by DVO		
		Number of herds with herd-level restricted test, by DVO		
	Animals	Total number of tests performed, by DVO	Cumulative Statistics	
		Total number of animals tests, by DVO	Cumulative Statistics	
		Total number of restricted herd tests, by DVO	Number of animals tested	
		Total number of herd tests, by DVO	Number of animals tested	
		Total number of individual tests, by DVO	Number of animals tested	
Total number of animals tested, by DVO				
Summary Statistics	Herds with TB reactors during month, by DVO	Cumulative Statistics	APT	
	Number of new reactor herds, by DVO	Cumulative Statistics	Negative-in-contacts	
	Number of new reactor animals, by DVO		Reactor removal times	
	Herd Prevalance			
	Herd Incidence			
	Animal Incidence			
	Number of reactor animals by month and by DVO			
	Number of new reactor herds by month and by DVO			
Summary Charts	Current Animal Incidence Chart	Monthly TB reactors chart		
	Yearly Animal Incidence Chart	New TB reactor herds		
	Current Herd Incidence Chart	TB Herd & Animal Incidence		
	Yearly Herd Incidence Chart			

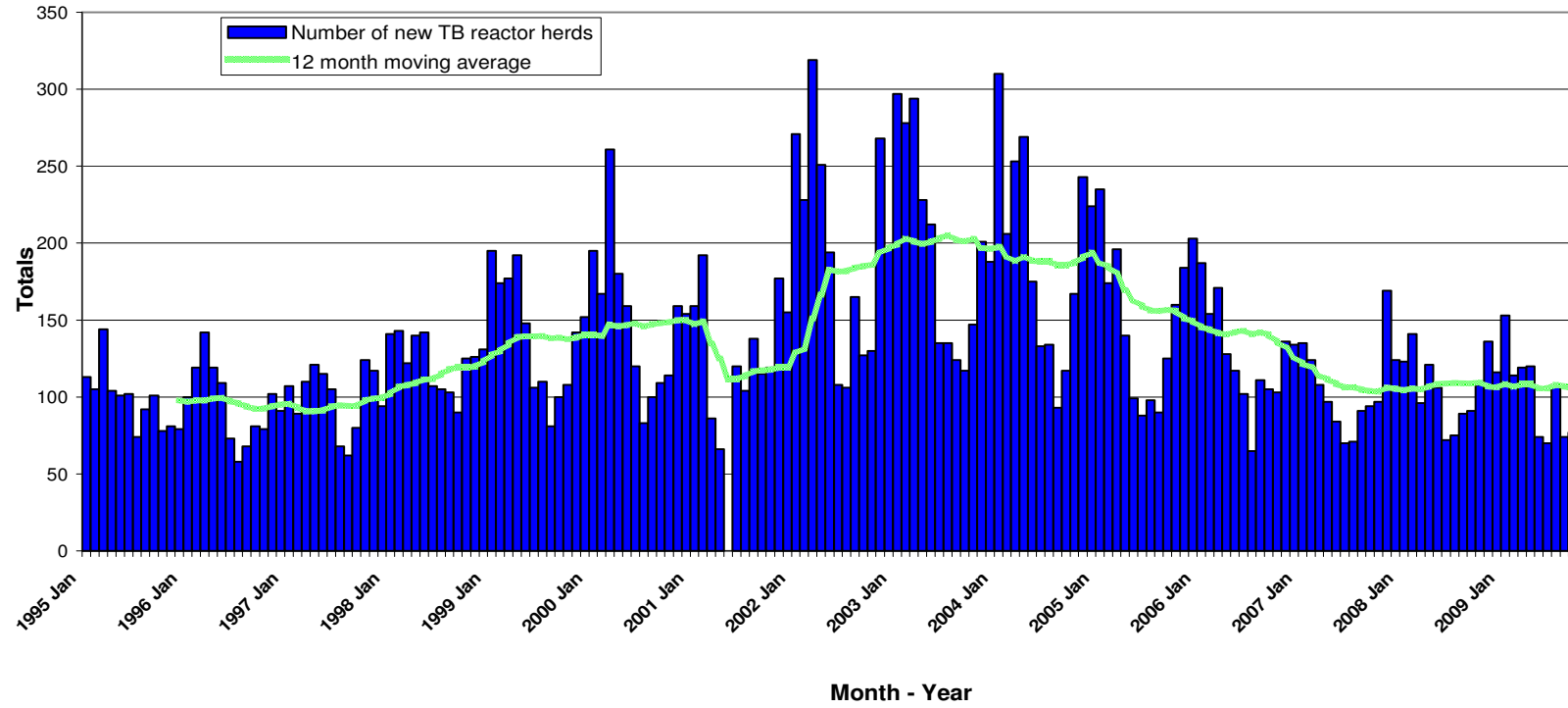
TB Herd and Animal Incidence:
(12 month moving average: January 2002 to October 2009)



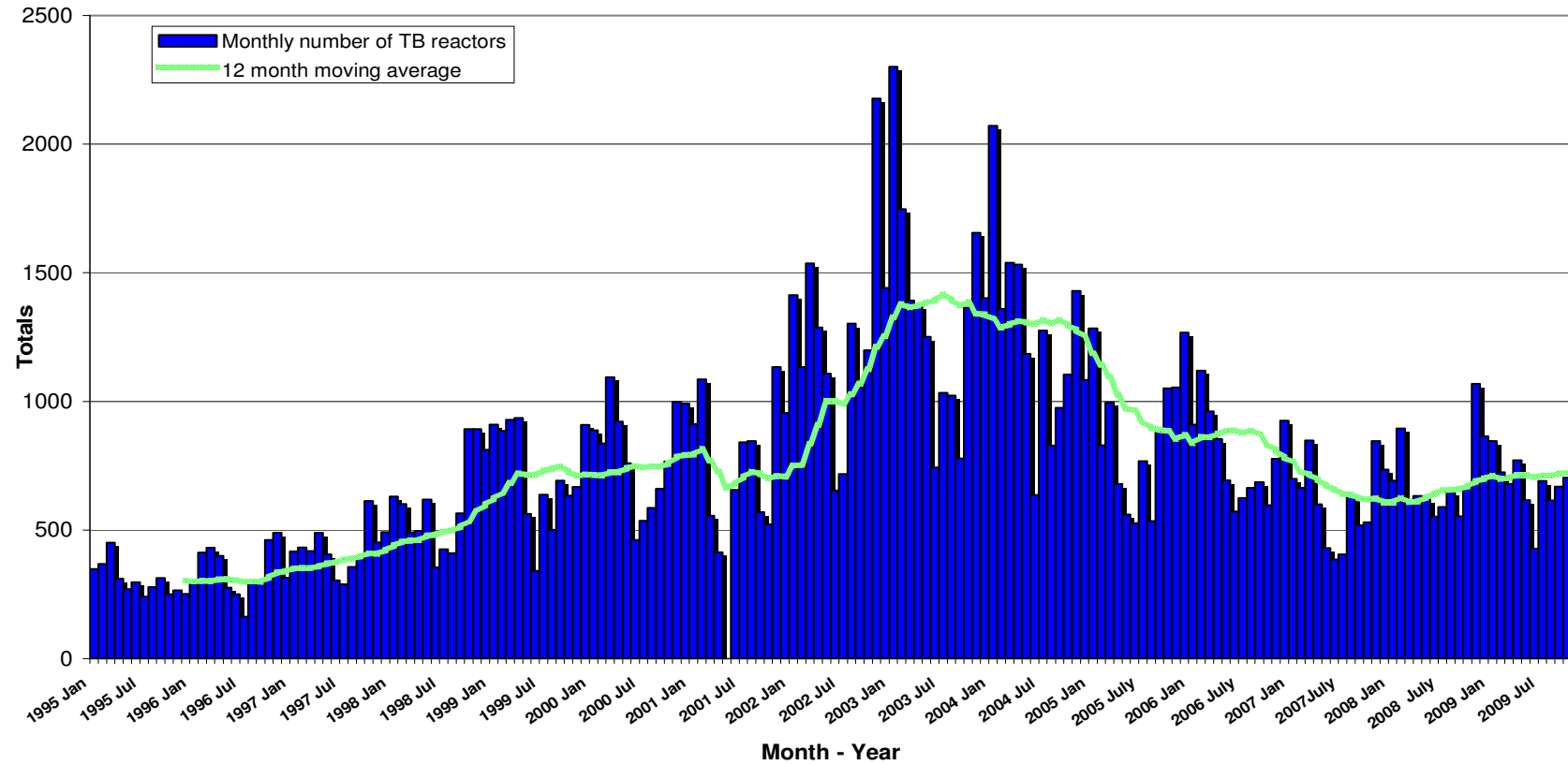


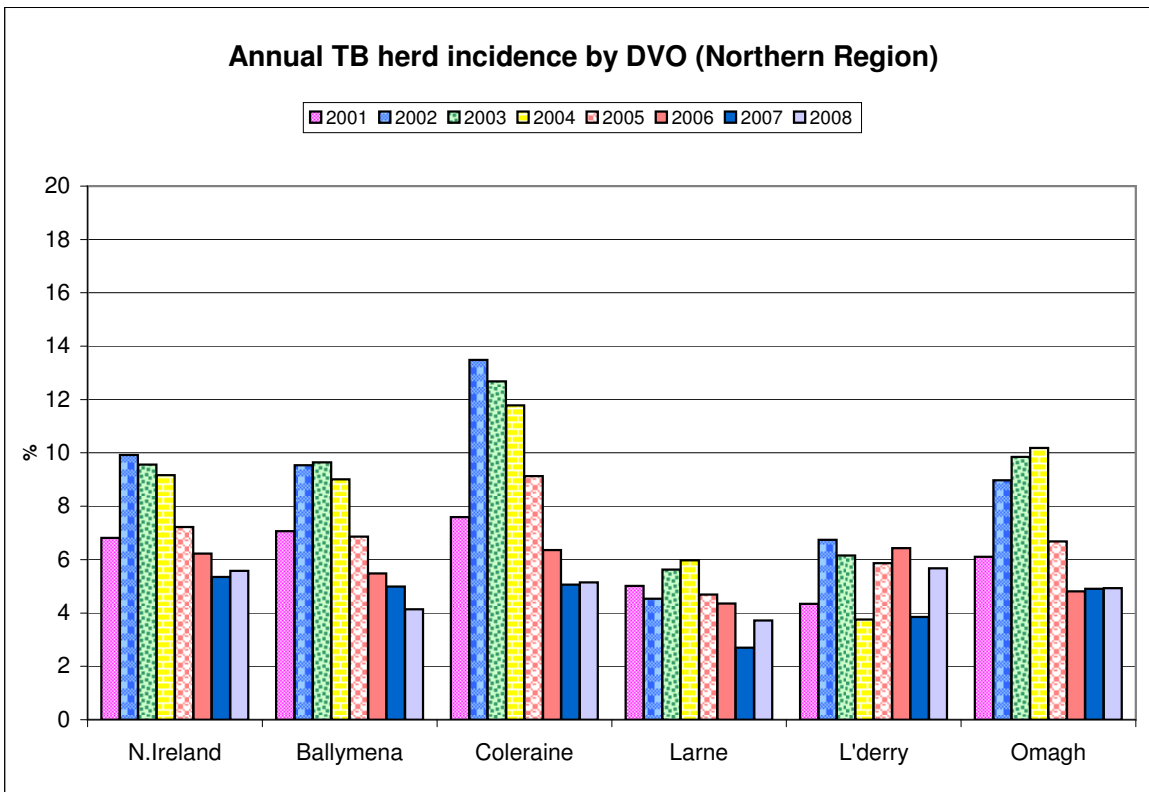
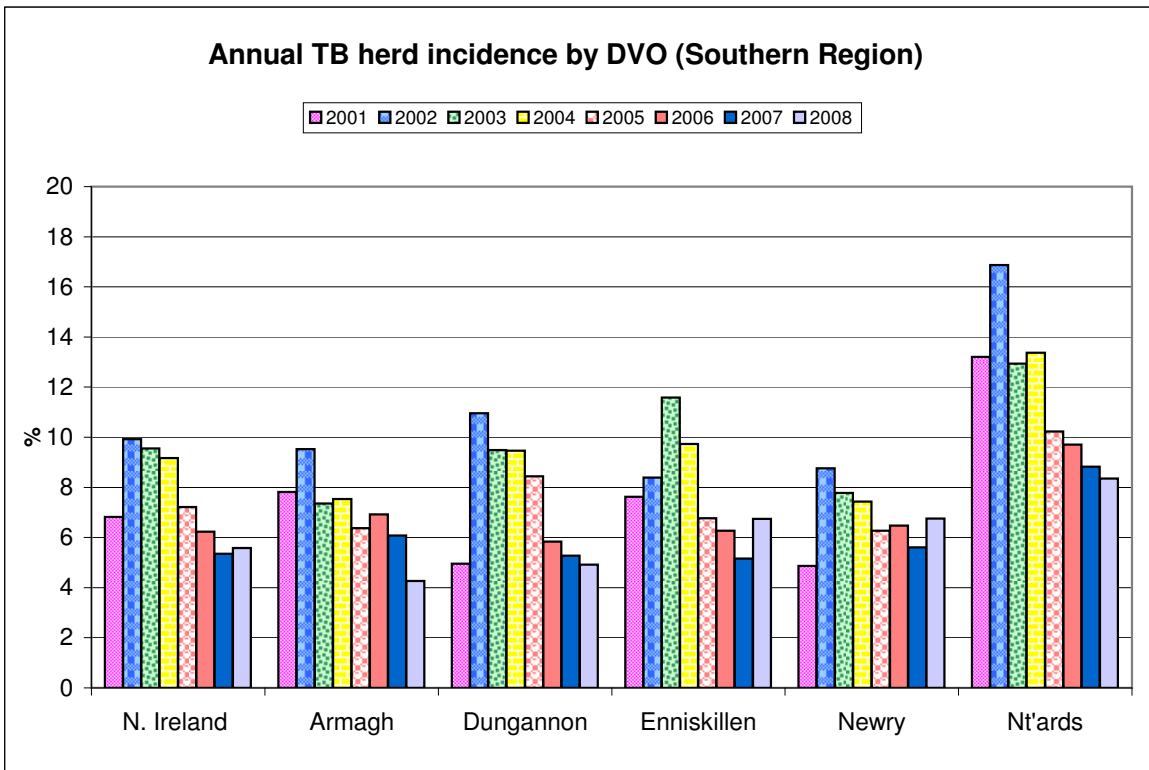


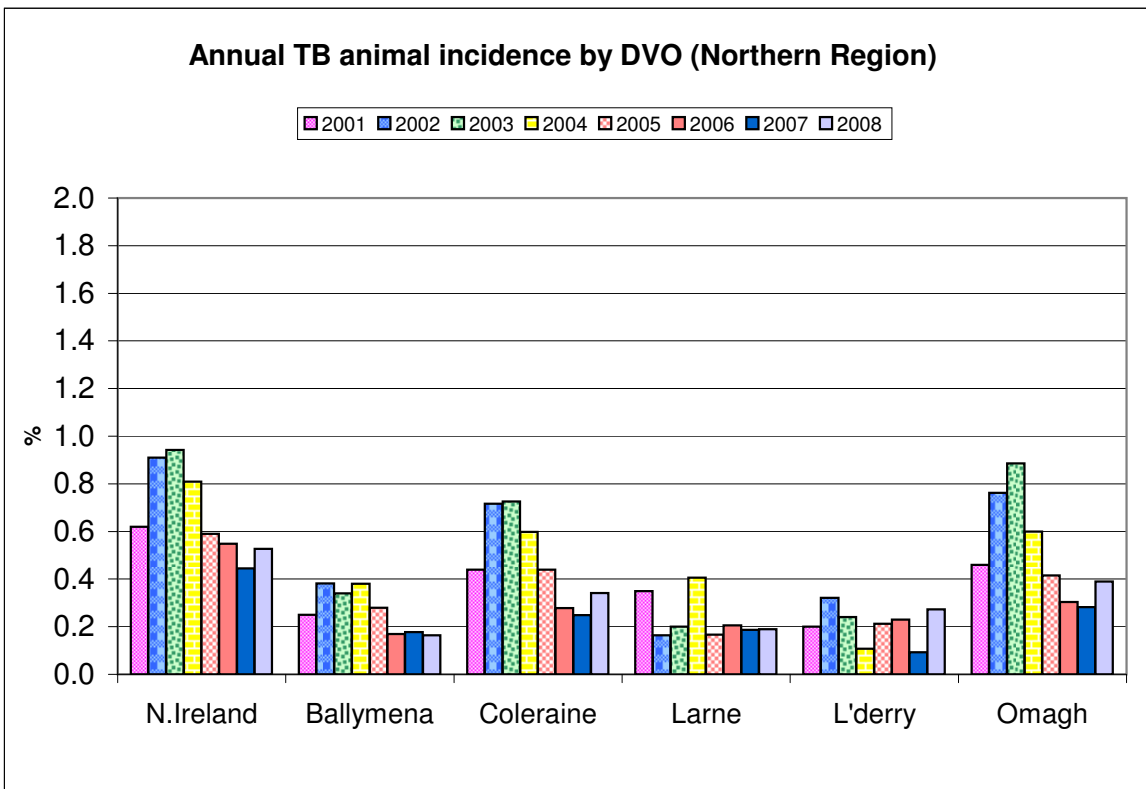
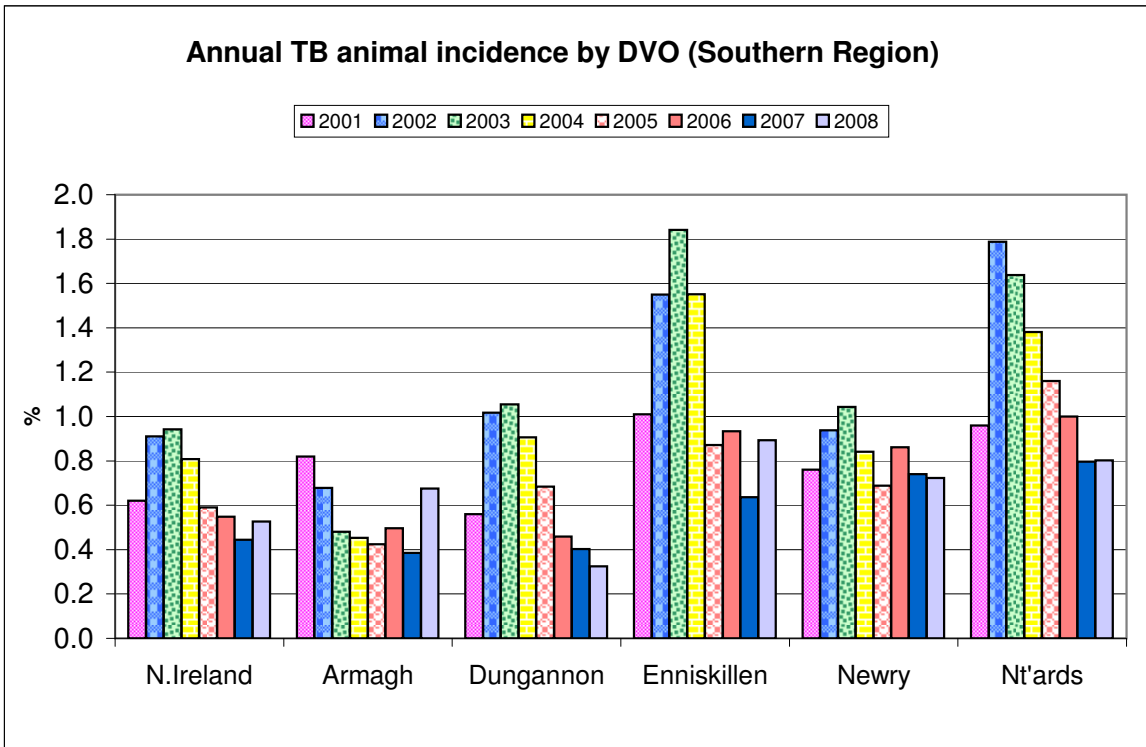
New TB Reactor Herds: January 1995 to October 2009

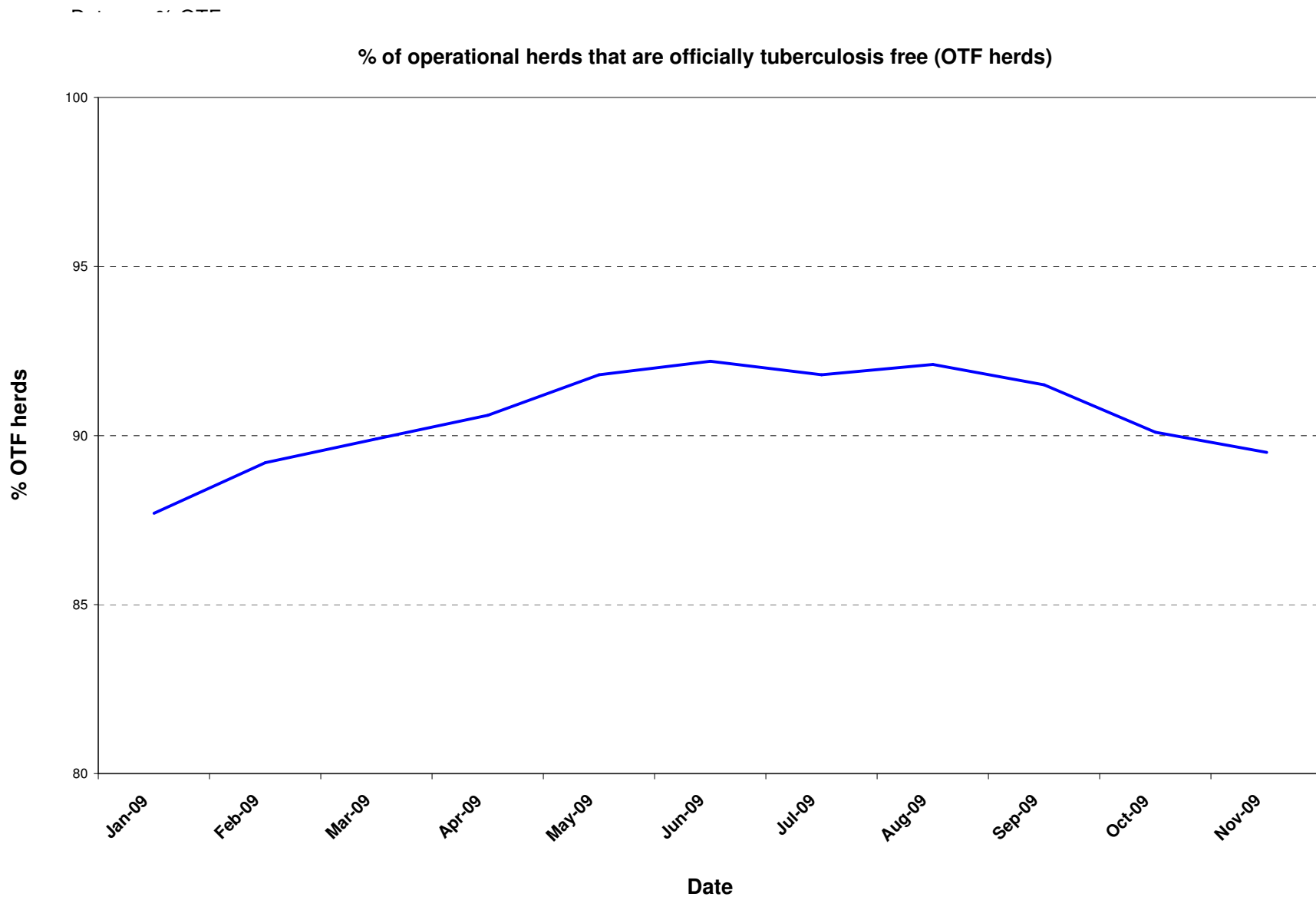


TB Reactors: January 1995 to October 2009









Month = October 2009

Ref.	Total	Armagh	Ballymena	Coleraine	Dungannon	Enniskillen	Larne	L'derry	Newry	Nt'ards	Omagh	
d1	No. of herds with TB reactors during month	185	10	6	11	25	27	7	3	43	27	26
d2	No. of new reactor herds during month	105	4	3	6	15	13	5	1	29	10	19
d3	No. of new reactor herds since start of year	1015	104	46	132	117	120	35	26	199	112	124
d4	No. of new reactor herds in the previous 12 months	1266	124	59	168	146	160	55	39	231	136	148
d26	No. of new reactor herds in the previous 13-24 months	1315	101	61	137	140	189	53	48	246	171	169
d5	No. of TB reactor animals during month	704	32	18	96	43	100	25	6	183	106	95
d6	No. of TB reactor animals since start of year	6744	1059	186	652	495	1002	103	111	1555	853	728
d7	No. of reactor animals in the previous 12 months	8675	1630	231	833	605	1373	163	154	1804	1031	851
d27	No. of reactor animals in the previous 13-24 months	8039	656	188	673	672	1354	244	154	1632	1609	857
d8	Herd Prevalence (%)	5.80	3.44	3.30	3.29	6.98	6.60	4.64	2.33	6.50	9.12	6.88
d20	Cumulative herd incidence in year (%)	5.24	4.67	3.36	5.19	4.15	3.93	2.09	3.01	5.52	6.23	4.09
d9	Annual herd incidence over the last 12 months (%)	5.51	5.57	4.30	6.61	5.18	5.24	3.29	4.52	6.40	7.56	4.88
d28	Annual herd incidence over the last 13-24 months (%)	5.66	4.52	4.32	5.37	4.97	6.14	3.11	5.42	6.75	9.41	5.44
d16	2008 Herd Incidence (%)	5.57	4.27	4.14	5.14	4.92	6.74	3.72	5.68	6.75	8.35	4.93
d10	2007 Herd Incidence (%)	5.35	6.08	4.99	5.07	5.28	5.16	2.70	3.85	5.61	8.83	4.90
d11	2006 Herd Incidence (%)	6.23	6.92	5.48	6.36	5.84	6.27	4.36	6.43	6.48	9.70	4.81
d38	2005 Herd Incidence (%)	7.22	6.38	6.87	9.13	8.45	6.77	4.69	5.86	6.28	10.22	6.68
d30	2004 Herd Incidence (%)	9.17	7.54	9.01	11.78	9.47	9.73	5.97	3.75	7.44	13.37	10.19
d21	Cumulative animal incidence in year (%)	0.513	0.731	0.226	0.394	0.306	0.733	0.109	0.232	0.759	0.586	0.452
d12	Annual animal incidence over the last 12 months (%)	0.545	0.968	0.217	0.398	0.309	0.842	0.120	0.253	0.795	0.606	0.417
d29	Annual animal incidence over the last 13-24 months (%)	0.498	0.387	0.167	0.327	0.346	0.793	0.178	0.239	0.719	0.922	0.412
d15	2008 Animal Incidence (%)	0.527	0.675	0.165	0.342	0.325	0.894	0.190	0.272	0.723	0.802	0.390
d13	2007 Animal Incidence (%)	0.445	0.385	0.177	0.248	0.403	0.637	0.186	0.093	0.740	0.797	0.282

d14	2006 Animal Incidence (%)	0.548	0.496	0.170	0.279	0.459	0.934	0.205	0.230	0.862	1.000	0.304
d39	2005 Animal Incidence (%)	0.590	0.424	0.279	0.440	0.684	0.871	0.167	0.213	0.688	1.160	0.415
d31	2004 Animal Incidence (%)	0.809	0.453	0.381	0.598	0.907	1.551	0.406	0.108	0.842	1.380	0.600
d34	APT during current month	3.27	1.50	1.47	3.74	1.54	4.55	2.61	0.68	4.83	4.51	3.55
d22	APT since start of year	3.60	5.06	1.77	2.96	2.37	5.03	0.93	1.86	4.65	3.99	3.45
d17	Current 12 month moving average APT	3.63	6.26	1.66	2.92	2.29	5.39	1.02	1.97	4.47	3.82	3.10
d18	2008 APT	3.54	4.51	1.34	2.65	2.38	5.69	1.60	2.09	4.36	4.80	2.78
d19	2007 APT	3.08	2.49	1.44	1.94	2.88	4.24	1.56	0.77	4.69	4.95	2.20
d42	2006 APT	3.49	3.00	1.30	2.03	3.06	5.52	1.60	1.66	5.23	5.66	2.16
d40	2005 APT	3.65	2.58	2.01	2.86	4.28	5.44	1.25	1.67	4.08	6.28	2.73
d32	2004 APT	4.86	2.88	2.58	3.72	5.59	8.62	2.91	0.79	5.00	7.69	3.87
d23	No. negative in contacts since start of year	608	85	1	1	139	58	2	0	130	111	81
d46	No. Negative in contacts over last 12 months	675	106	1	2	139	61	7	0	139	130	90
d24	No. negative in contacts during 2008	611	117	0	35	6	49	12	5	94	200	93
d25	No. negative in contacts during 2007	589	38	3	15	49	59	14	1	40	248	122
d43	No. negative in contacts during 2006	689	4	1	58	122	106	2	14	83	240	59
d41	No. negative in contacts during 2005	1208	25	8	93	48	377	5	7	12	584	49
d33	No. negative in contacts during 2004	673	37	26	18	15	191	2	1	140	187	56
d36	Reactor removal time 2009	12.3	14.3	8.9	8.9	8.9	12.3	12.3	8.2	12.3	12.3	9.5
d37	Reactor removal time 2008	11.6	12.3	8.9	8.9	9.6	9.6	9.6	8.2	12.3	12.3	8.2
d45	Reactor removal time 2007	12.3	12.3	12.3	11.0	12.3	8.9	13.0	8.9	13.0	13.0	8.9
d35	Reactor removal time 2006	13.0	12.3	9.6	11.6	13.7	11.6	13.0	10.3	13.7	13.7	9.6
D44	Reactor removal time 2005	13.0	10.3	13.0	13.0	13.0	13.0	14.4	13.0	15.8	12.3	11.6

Tuberculosis: number of reactor herds by month and by DVO in 2009 and unique herd breakdowns during the year

2009		DVO_CODE										
Year	Month	Armagh	Ballymena	Coleraine	Dungannon	Enniskillen	Larne	L'Derry	Newry	Nt'Ards	Omagh	Total
2009	1	13	14	29	15	14	7	4	28	11	19	154
2009	2	8	5	15	12	14	9	5	19	8	19	114
2009	3	15	4	18	20	9	4	2	17	16	14	119
2009	4	12	6	16	12	19	3	5	22	7	18	120
2009	5	13	2	14	6	8	1	2	8	15	5	74
2009	6	9	4	9	8	2	2	0	21	8	7	70
2009	7	12	3	8	6	19	3	3	24	17	13	108
2009	8	11	3	7	8	15	0	2	16	7	5	74
2009	9	7	2	10	15	7	1	2	15	13	5	77
2009	10	4	3	6	15	13	5	1	29	10	19	105
2009	11											0
2008	12											0
Total		104	46	132	117	120	35	26	199	112	124	1015

Unique Herd Breakdowns		DVO_CODE										
Year	Armagh	Ballymena	Coleraine	Dungannon	Enniskillen	Larne	L'Derry	Newry	Nt'Ards	Omagh	Total Herds	
2009	138	57	166	143	171	42	31	268	153	142	1311	

Tuberculosis: number of reactor herds by month and by DVO in 2008 and unique herd breakdowns during the year

2008		DVO_CODE										
Year	Month	Armagh	Ballymena	Coleraine	Dungannon	Enniskillen	Larne	L'Derry	Newry	Nt'Ards	Omagh	Total
2008	1	10	6	14	16	19	9	4	17	6	22	123
2008	2	11	4	15	16	19	7	3	28	15	23	141
2008	3	6	11	5	6	15	4	5	15	14	15	96
2008	4	7	7	12	12	20	4	2	26	14	17	121
2008	5	13	6	10	10	11	3	7	23	10	13	106
2008	6	4	2	6	2	13	1	6	19	11	8	72
2008	7	7	1	4	13	7	2	2	17	13	9	75
2008	8	4	1	7	8	13	4	2	25	17	8	89
2008	9	6	2	9	14	19	4	1	18	15	3	91
2008	10	7	4	12	10	26	3	4	22	11	9	108
2008	11	14	7	21	15	20	9	9	18	11	12	136
2008	12	6	6	15	14	20	11	4	14	13	12	115
Total		95	57	130	136	202	61	49	242	150	151	1273

Unique Herd Breakdowns		DVO_CODE										
Year	Armagh	Ballymena	Coleraine	Dungannon	Enniskillen	Larne	L'Derry	Newry	Nt'Ards	Omagh	Total Herds	
2008	128	66	158	167	248	67	56	315	215	178	1598	

Tuberculosis: number of reactor herds by month and by DVO in 2007 and unique herd breakdowns during the year

2007		DVO_CODE										
Year	Month	Armagh	Ballymena	Coleraine	Dungannon	Enniskillen	Larne	L'Derry	Newry	Nt'Ards	Omagh	Total
2007	1	17	11	15	24	13	10	0	20	14	11	135
2007	2	12	10	14	12	17	5	7	15	13	19	124
2007	3	10	5	13	15	25	3	5	12	10	10	108
2007	4	14	6	4	11	12	4	4	19	8	15	97
2007	5	11	3	8	7	9	1	1	16	13	15	84
2007	6	9	2	7	13	8	4	0	15	9	3	70
2007	7	7	3	5	6	11	1	2	17	7	12	71
2007	8	9	6	12	6	16	3	0	19	14	6	91
2007	9	9	3	10	15	9	3	1	20	16	8	94
2007	10	13	6	4	10	14	0	1	18	18	13	97
2007	11	17	10	31	19	18	5	7	20	25	17	169
2007	12	9	7	12	14	9	7	5	16	20	25	124
Total		137	72	135	152	161	46	33	207	167	154	1264

Unique Herd Breakdowns		DVO_CODE										
Year	Armagh	Ballymena	Coleraine	Dungannon	Enniskillen	Larne	L'Derry	Newry	Nt'Ards	Omagh	Total Herds	
2007	181	82	169	196	221	57	35	277	239	176	1633	

A herd is defined as being a TB reactor herd if it had at least one TB reactor animal in that month and no TB reactor animals during the previous 12 months.

A TB unique herd breakdown is defined as a herd which has had at least one TB reactor during the specified calendar year irrespective of any TB reactors during the previous calendar year.

Tuberculosis: number of reactor animals by month and by DVO 2009

2009		DVO CODE										
Year	Month	Armagh	Ballymena	Coleraine	Dungannon	Enniskillen	Larne	L'Derry	Newry	Nt'Ards	Omagh	Total
2009	1	125	47	98	80	124	9	15	194	96	58	846
2009	2	99	6	105	46	103	30	7	130	118	81	725
2009	3	133	38	67	74	66	12	5	120	105	59	679
2009	4	63	12	81	66	170	9	13	155	97	106	772
2009	5	169	10	38	30	53	2	2	106	59	147	616
2009	6	67	21	29	23	53	2	0	140	50	43	428
2009	7	130	12	41	27	129	12	49	161	90	40	691
2009	8	96	15	22	44	124	0	11	189	36	78	615
2009	9	145	7	75	62	80	2	3	177	96	21	668
2009	10	32	18	96	43	100	25	6	183	106	95	704
2009	11											0
2009	12											0
Total		1059	186	652	495	1002	103	111	1555	853	728	6744

Tuberculosis: number of reactor animals by month and by DVO 2008

2008		DVO CODE										
Year	Month	Armagh	Ballymena	Coleraine	Dungannon	Enniskillen	Larne	L'Derry	Newry	Nt'Ards	Omagh	Total
2008	1	77	26	65	86	124	15	19	80	104	96	692
2008	2	107	6	96	86	126	31	13	173	126	131	895
2008	3	42	38	62	42	60	9	8	99	173	84	617
2008	4	38	12	58	49	111	30	14	180	57	83	632
2008	5	49	25	38	32	79	27	10	98	192	70	620
2008	6	24	3	85	43	73	2	6	157	54	105	552
2008	7	79	3	12	48	119	10	12	114	135	57	589
2008	8	37	5	49	48	115	32	12	186	131	32	647
2008	9	87	4	22	61	140	10	3	71	144	9	551
2008	10	29	9	29	26	181	25	32	222	95	16	664
2008	11	304	31	99	44	221	34	36	144	116	39	1068
2008	12	267	14	82	66	150	26	7	105	62	84	863
Total		1140	176	697	631	1499	251	172	1629	1389	806	8390

Tuberculosis: number of reactor animals by month and by DVO 2007

2007		DVO CODE										
Year	Month	Armagh	Ballymena	Coleraine	Dungannon	Enniskillen	Larne	L'Derry	Newry	Nt'Ards	Omagh	Total
2007	1	36	16	93	162	79	45	0	107	120	41	699
2007	2	82	14	67	83	114	29	11	122	92	50	664
2007	3	36	23	96	77	141	15	5	265	142	47	847
2007	4	71	24	20	76	45	60	5	175	76	48	600
2007	5	40	17	17	49	49	1	1	133	91	32	430
2007	6	30	2	12	72	78	12	0	74	74	32	386
2007	7	67	6	9	10	60	5	3	127	87	32	406
2007	8	137	31	39	42	102	26	3	127	98	34	639
2007	9	39	5	18	64	119	6	1	137	95	34	518
2007	10	41	8	6	18	96	2	4	150	151	54	530
2007	11	45	19	90	82	139	9	8	140	209	104	845
2007	12	42	38	67	69	87	44	17	112	189	70	735
Total		666	203	534	804	1109	254	58	1669	1424	578	7299

**A TB reactor animal is defined as an animal where the manual interpretation field for a skin test is positive ('P') with the first test date being taken as the time at which the animal became a reactor.
Animals with lesions at routine slaughter ('LRS') are not taken into account.**

Month = October 2009

Ref.		Total	Armagh	Ballymena	Coleraine	Dungannon	Enniskillen	Larne	L'derry	Newry	Nt'ards	Omagh
b16	No. herds with any test completed in month	3701	339	210	388	445	464	190	142	729	329	465
b17	No. herds with any test, from start of year	20128	2041	1124	2188	2473	2657	1330	735	3353	1619	2608
b29	All herds with any test, from start of year	20983	2119	1190	2312	2586	2723	1402	769	3477	1708	2697
b18	No. herds with any test, from start of year (no cattle)	855	78	66	124	113	66	72	34	124	89	89
b19	No. herds with herd test completed in month	3190	291	182	334	358	409	151	129	662	296	378
b20	No. herds with herd test, from start of year	19367	1978	1048	2059	2369	2598	1230	707	3310	1573	2495
b30	All herds with herd test, from start of year	20236	2057	1114	2186	2484	2665	1304	741	3438	1663	2584
b21	No. herds with herd test, from start of year (no cattle)	869	79	66	127	115	67	74	34	128	90	89
b22	No. herds with herd test during last 12 months	22980	2227	1371	2542	2817	3051	1672	863	3608	1798	3031
b31	No. herds with herd test during last 13-24 months	23252	2236	1411	2551	2817	3076	1706	885	3643	1818	3109
b28	No. herds with herd test during 2008	22835	2227	1376	2527	2767	2995	1638	863	3585	1797	3060
b23	No. herds with herd test during 2007	23642	2253	1444	2664	2881	3119	1702	858	3690	1891	3140
b24	No. herds with herd test during 2006	24301	2369	1496	2706	2944	3173	1743	933	3766	1948	3223
b39	No. herds with herd test during 2005	24820	2430	1529	2826	3031	3204	1771	904	3840	2005	3280
b32	No. herds with herd test during 2004	25349	2468	1588	2877	3127	3277	1893	960	3833	2019	3307
b25	No. herds with any risk test completed	9215	1211	435	813	901	1192	407	231	2185	848	992
b26	No. herds with herd risk test completed	6385	889	204	415	414	941	146	112	1967	634	663
b27	No. herds with restricted herd test completed	2341	251	96	263	275	281	102	64	474	298	237

Month = October 2009

Ref	Total	Armagh	Ballymena	Coleraine	Dungannon	Enniskillen	Larne	L'derry	Newry	Nt'ards	Omagh	
c1	Total number of tests in current month	4103	408	216	406	531	506	209	152	781	362	532
c2	Total number of tests from start of year	34447	3847	1749	3537	4202	4357	2045	1093	6379	3015	4223
c3	No. tests during the same time period in the previous year	33320	3729	1715	3419	3837	4212	1991	1113	5849	3130	4325
c4	% change between years	3.3	3.1	1.9	3.3	8.7	3.3	2.6	-1.8	8.3	-3.8	-2.4
c5	No. tests in the previous 12 months	42749	4646	2284	4423	5174	5456	2729	1396	7697	3709	5235
c6	No. animal tests in current month	215598	21377	12222	25637	27975	21972	9565	8767	37852	23482	26749
c7	No. animal tests from start of year	1871973	209320	104948	220059	208621	199346	110350	59597	334509	213969	211254
c8	No. animal tests during the same time period in the previous year	1850082	201831	97054	198042	209124	207815	107707	63782	304260	233624	226843
c9	% change between years	1.2	3.6	7.5	10.0	-0.2	-4.2	2.4	-7.0	9.0	-9.2	-7.4
c10	No. animal tests in previous 12 months	2390448	260334	139424	284914	264640	254825	160010	78240	403523	269808	274730
c11	No. cattle eligible for TB testing	1619674	155530	114182	212419	188970	163807	140998	63918	208476	165909	205465
c12	No. cattle herds eligible for TB testing	26396	2592	1610	2943	3191	3377	1957	1035	4090	2109	3492
c13	No. restricted herd tests during month	386	46	16	38	41	44	7	11	78	67	38
c14	No. animals tested	53521	6786	2650	5159	6385	4828	846	2027	11408	7254	6178
c15	No. herd tests during month	3190	291	182	334	358	409	151	129	662	296	378
c16	No. animals tested	212411	20987	12144	25417	27214	21619	9237	8628	37492	23231	26442
c17	No. individual tests during month	913	117	34	72	173	97	58	23	119	66	154
c18	No. animals tested	3187	390	78	220	761	353	328	139	360	251	307
c23	No. animals TB tested since start of year	1314241	144880	82163	165277	162014	136723	94906	47902	204925	145465	161030
c19	No. animals TB tested in previous 12 months	1591760	168435	106634	209198	196031	163117	135842	60920	226849	170123	204320
c24	No. animals TB tested in previous 13-24 months	1612847	169504	112290	205537	194187	170724	136901	64429	226860	174476	207995
c22	No. animals TB tested in 2008	1592213	168975	106901	203946	194354	167758	132365	63158	225195	173195	206851
c20	No. animals TB tested in 2007	1640552	172852	114560	215201	199652	174151	136324	62184	225462	178638	205208
c21	No. animals TB tested in 2006	1711870	182776	120699	220008	210854	182488	144582	69516	234093	185689	215645
c26	No. animals TB tested in 2005	1776064	183292	125632	237269	222514	184630	151248	66659	234585	191843	226983
c25	No. animals TB tested in 2004	1865762	185178	134129	249856	240990	198531	162067	76106	239332	202259	238461

Month = November 2009

Ref		Total	Armagh	Ballymena	Coleraine	Dungannon	Enniskillen	Larne	L'derry	Newry	Nt'ards	Omagh
f1	No. of Officially Tuberculosis Free Herds (OTF)	23846	2283	1515	2669	2889	3073	1842	941	3616	1822	3196
f2	No. of Officially Tuberculosis Suspended Herds (OTS)	1799	218	78	184	215	198	103	65	303	182	253
f3	No. of Officially Tuberculosis Withdrawn Herds (OTW)	987	122	42	101	123	94	43	19	212	130	101
f4	% herds that are OTF	89.5	87.0	92.7	90.4	89.5	91.3	92.7	91.8	87.5	85.4	90.0
f5	% herds that are OTS	6.8	8.3	4.8	6.2	6.7	5.9	5.2	6.3	7.3	8.5	7.1
f6	% herds that are OTW	3.7	4.7	2.6	3.4	3.8	2.8	2.2	1.9	5.1	6.1	2.8

		Month = October 2009										
		(Data lagged by 4 months)										
Ref		Total	Armagh	Ballymena	Coleraine	Dungannon	Enniskillen	Larne	L'derry	Newry	Nt'ards	Omagh
e1	No. TB animals found at routine slaughter in current year	270	35	13	25	33	13	4	5	82	29	31
e19	No. TB animals found at routine slaughter in last 12 months	616	72	36	53	78	37	15	9	168	89	59
e20	No. TB animals found at routine slaughter in last 13-24 months	729	100	35	39	102	58	24	7	172	121	71
e6	No. TB animals found at routine slaughter in 2008	638	73	32	51	92	47	19	6	153	106	59
e2	No. TB animals found at routine slaughter in 2007	695	103	31	32	95	60	21	13	169	107	64
e3	No. TB animals found at routine slaughter in 2006	640	81	22	41	86	54	34	16	144	111	51
e4	No. TB animals found at routine slaughter in 2005	656	82	23	46	89	56	22	18	123	146	51
e5	No. TB animals found at routine slaughter in 2004	774	78	38	87	98	53	46	9	152	136	77
e7	No. herds with TB found at routine slaughter in current year	190	26	6	22	19	11	4	5	49	24	24
e21	No. herds with TB found at routine slaughter in last 12 months	420	54	15	41	54	30	13	9	101	60	43
e22	No. herds with TB found at routine slaughter in last 13-24 months	507	70	18	26	72	47	22	7	98	92	55
e12	No. herds with TB found at routine slaughter in 2008	450	60	16	37	68	36	18	6	90	72	47
e8	No. herds with TB found at routine slaughter in 2007	513	71	14	25	67	55	20	10	116	85	50
e9	No. herds with TB found at routine slaughter in 2006	461	63	19	33	65	43	28	16	80	77	37
e10	No. herds with TB found at routine slaughter in 2005	542	67	21	42	69	47	22	17	103	109	45
e11	No. herds with TB found at routine slaughter in 2004	630	66	32	72	87	43	36	9	129	99	57
e13	% of TB animals that were LRS in current year	6.2	5.1	8.8	5.6	9.4	2.2	5.9	10.6	8.8	5.2	5.9
e23	% of TB animals that were LRS in last 12 months	6.8	4.7	15.3	6.9	11.3	2.4	6.9	5.9	9.1	6.9	7.5
e24	% of TB animals that were LRS in last 13-24 months	8.7	12.4	13.9	5.8	14.1	4.7	10.4	6.2	9.8	7.3	7.3
e18	% of TB animals that were LRS in 2008	7.1	6.0	15.4	6.8	12.7	3.0	7.0	3.4	8.6	7.1	6.8
e14	% of TB animals that were LRS in 2007	8.7	13.4	13.2	5.7	10.6	5.1	7.6	18.3	9.2	7.0	10.0
e15	% of TB animals that were LRS in 2006	6.4	8.2	9.7	6.3	8.2	3.1	10.3	9.1	6.7	5.6	7.2
e16	% of TB animals that were LRS in 2005	5.9	9.5	6.1	4.2	5.5	3.4	8.0	11.3	7.1	6.2	5.1
e17	% of TB animals that were LRS in 2004	4.9	8.5	6.9	5.5	4.3	1.7	6.5	9.9	7.1	4.7	5.1

Month = October 2009												
Ref	(Data lagged by 4 months)	Total	Armagh	Ballymena	Coleraine	Dungannon	Enniskillen	Larne	L'derry	Newry	Nt'ards	Omagh
g1	No. of confirmed TB reactors during current year	1609	220	57	211	147	243	15	17	267	209	223
g31	No. of confirmed TB reactors during last 12 months	3187	503	79	345	243	564	56	81	530	446	340
g32	No. of confirmed TB reactors during last 13-24 months	3324	317	110	302	258	486	71	63	489	741	487
g6	No. of confirmed TB reactors 2008	3298	425	76	329	231	536	75	102	514	590	420
g2	No. of confirmed TB reactors 2007	3204	306	102	273	370	523	92	37	537	640	324
g3	No. of confirmed TB reactors 2006	3973	407	84	296	370	721	73	87	787	829	319
g4	No. of confirmed TB reactors 2005	3990	292	155	352	450	533	50	65	702	996	395
g5	No. of confirmed TB reactors 2004	4950	336	231	606	574	677	150	26	669	1133	548
g7	Total animals with confirmed TB during current year	1879	255	70	236	180	256	19	22	349	238	254
g33	Total animals with confirmed TB during last 12 months	3803	575	115	398	321	601	71	90	698	535	399
g34	Total animals with confirmed TB in last 13-24 months	4053	417	145	341	360	544	95	70	661	862	558
g12	Total animals with confirmed TB in 2008	3936	498	108	380	323	583	94	108	667	696	479
g8	Total animals with confirmed TB in 2007	3899	409	133	305	465	583	113	50	706	747	388
g9	Total animals with confirmed TB in 2006	4613	488	106	337	456	775	107	103	931	940	370
g10	Total animals with confirmed TB in 2005	4646	374	178	398	539	589	72	83	825	1142	446
g11	Total animals with confirmed TB in 2004	5724	414	269	693	672	730	196	35	821	1269	625
g13	Confirmed TB animal prevalence in current year (%)	0.180	0.222	0.071	0.187	0.155	0.238	0.023	0.060	0.211	0.204	0.201
g35	Confirmed TB animal prevalence in last 12 months (%)	0.236	0.344	0.103	0.188	0.163	0.364	0.052	0.143	0.309	0.312	0.192
g36	Confirmed TB animal prevalence in last 13-24 months (%)	0.249	0.243	0.128	0.162	0.185	0.317	0.068	0.109	0.294	0.493	0.267
g18	Confirmed TB animal prevalence in 2008 (%)	0.247	0.295	0.101	0.186	0.166	0.348	0.071	0.171	0.296	0.402	0.232
g14	Confirmed TB animal prevalence in 2007 (%)	0.240	0.237	0.116	0.142	0.233	0.335	0.083	0.080	0.313	0.418	0.189
g15	Confirmed TB animal prevalence in 2006 (%)	0.228	0.267	0.088	0.153	0.216	0.425	0.074	0.148	0.398	0.506	0.172
g16	Confirmed TB animal prevalence in 2005 (%)	0.260	0.204	0.142	0.168	0.242	0.319	0.048	0.125	0.352	0.595	0.196
g17	Confirmed TB animal prevalence in 2004 (%)	0.249	0.224	0.201	0.277	0.279	0.368	0.121	0.046	0.343	0.627	0.262

g19	No. herds with confirmed TB in current year	712	74	36	97	69	82	17	16	152	86	83
g37	No. herds with confirmed TB in last 12 months	1337	132	53	156	143	168	46	38	281	181	139
g38	No. herds with confirmed TB in last 13-24 months	1483	152	65	129	165	200	47	39	265	233	188
g24	No. herds with confirmed TB in 2008	1412	129	57	138	160	197	50	46	271	207	157
g20	No. herds with confirmed TB in 2007	1507	185	56	127	184	200	49	31	266	230	179
g21	No. herds with confirmed TB in 2006	1664	194	68	147	202	222	59	60	278	263	171
g22	No. herds with confirmed TB in 2005	1856	169	104	235	244	216	63	50	262	298	215
g23	No. herds with confirmed TB in 2004	2298	181	119	329	298	303	80	29	333	333	293
g25	Confirmed TB herd prevalence in current year (%)	4.79	4.73	4.49	6.66	4.14	4.12	1.69	3.15	5.66	6.91	4.25
g39	Confirmed TB herd prevalence in last 12 months (%)	5.75	5.87	3.73	6.02	4.99	5.39	2.68	4.26	7.74	9.92	4.45
g40	Confirmed TB herd prevalence in last 13-24 months (%)	6.23	6.62	4.44	4.88	5.72	6.34	2.68	4.30	7.20	12.46	5.93
g30	Confirmed TB herd prevalence in 2008 (%)	6.18	5.79	4.14	5.46	5.78	6.58	3.05	5.33	7.56	11.52	5.13
g26	Confirmed TB herd prevalence in 2007 (%)	6.37	8.21	3.88	4.77	6.39	6.41	2.88	3.61	7.21	12.16	5.70
g27	Confirmed TB herd prevalence in 2006 (%)	6.85	8.19	4.55	5.43	6.86	7.00	3.38	6.43	7.38	13.50	5.31
g28	Confirmed TB herd prevalence in 2005 (%)	7.48	6.95	6.80	8.32	8.05	6.74	3.56	5.53	6.82	14.86	6.55
g29	Confirmed TB herd prevalence in 2004 (%)	9.07	7.33	7.49	11.44	9.53	9.25	4.23	3.02	8.69	16.49	8.86

Explanatory Comments for Tuberculosis Statistics - B. Testing Herds

B16	No. herds with any test completed in month	Test of any disease status and size (herd or animal-level). Tests with no animals are excluded.
B17	No. herds with any test, from start of year	Test of any disease status and size (herd or animal-level) carried out on a herd since 1st January. Tests with no animals are excluded.
B29	All herds with any test, from start of year	Skin test of any disease status and size (herd or animal-level) carried out on a herd since 1st January. Tests with no animals are included.
B18	No. herds with any test, from start of year (no cattle)	Herd or individual test of any disease status (routine, risk or restricted) where no cattle were recorded at all such tests since 1st January
B19	No. herds with herd test completed in month	Herd level test of any disease status (routine, risk or restricted) completed during the above month. Tests with no animals are excluded.
B20	No. herds with herd test, from start of year	Herd level test of any disease status (routine, risk or restricted) completed since 1st January. Tests with no animals are excluded.
B30	All herds with herd test, from start of year	Herd level test of any disease status (routine, risk or restricted) completed since 1st January. Tests with no animals are included.
B21	No. herds with herd test, from start of year (no cattle)	Herd level test of any disease status (routine, risk or restricted) where no cattle were recorded at all such herd tests since 1st January.
B22	No. herds with herd test during last 12 months	Herd level test of any disease status (routine, risk or restricted) completed in the 12 month period from the above month. Tests with no animals are excluded.
B31	No. herds with herd test during last 13-24 months	Herd level test of any disease status (routine, risk or restricted) completed in the 13-24 months from the above month. Tests with no animals are excluded.
B39	No. herds with herd test during 2005	Herd level test of any disease status (routine, risk or restricted) completed in the calendar year. Tests with no animals are excluded.
B32	No. herds with herd test during 2004	Herd level test of any disease status (routine, risk or restricted) completed in the calendar year. Tests with no animals are excluded.
B28	No. herds with herd test during 2008	Herd level test of any disease status (routine, risk or restricted) completed in the calendar year. Tests with no animals are excluded.
B23	No. herds with herd test during 2007	Herd level test of any disease status (routine, risk or restricted) completed in the calendar year. Tests with no animals are excluded.
B24	No. herds with herd test during 2006	Herd level test of any disease status (routine, risk or restricted) completed in the calendar year. Tests with no animals are excluded.
B25	No. herds with any risk test completed	Herd has had a herd or individual level risk test since start of calendar year and number tested > 0
B26	No. herds with herd risk test completed	Herd has had a herd level risk test since start of calendar year and number tested > 0.
B27	No. herds with restricted herd test completed	Herd has had a restricted herd test (RHT, RH1, RH2) since start of calendar year and number tested

Explanatory Comments for Tuberculosis Statistics - C. Testing Animals

Ref	Data Title	Explanation
C1	Total number of tests in current month	Number of herds and individual tests performed in the month stated above. Tests with no animals are excluded
C2	Total number of tests from start of year	From 1st January. Tests with no animals are excluded.
C3	No. tests during the same time period in the previous year	From 1st January of previous year. Tests with no animals are excluded.
C4	% change between years	Difference between the number of tests carried out during the current year and the number carried out in the previous expressed as a percentage.
C5	No. tests in the previous 12 months	Last 12 month period from the above month. Tests with no animals are excluded.
C6	No. animal tests in current month	Animal test = a count of the number of animals tested within each herd or individual test. Some animals may have been tested multiple times during the year.
C7	No. animal tests from start of year	Number of animal tests carried out since 1st January.
C8	No. animal tests during the same time period in the previous year	Number of animal tests carried out from 1st January in the previous year over the same time interval as recorded for the current year.
C9	% change between years	Difference between the number of animal tests during the current year and the number carried out in the previous expressed as a percentage.
C10	No. animal tests in previous 12 months	Last 12 month period from the above month.
C11	No. cattle eligible for TB testing	Based on the average number of animals presented at TB herd tests over last 4 years.
C12	No. cattle herds eligible for TB testing	Based on cattle being presented for a TB herd tests over last 4 years. Herds with '0' cattle are excluded.
C13	No. restricted herd tests during month	All restricted herd tests (RHT, RH1 and RH2) carried out during the above month.
C14	No. animals tested	Total of the animals reported as being tested within restricted herd tests (RHT, RH1, RH2) during the above month.
C15	No. herd tests during month	Total of the animals reported as being tested within all herd tests during the above month.
C16	No. animals tested	Total of the animals reported as being tested within all herd tests during the above month.
C17	No. individual tests during month	Total of the animals reported as being tested within all individual tests during the above month.
C18	No. animals tested	Total of the animals reported as being tested within all individual tests during the above month.
C23	No. animals TB tested since start of year	Animals identified as having had at least one TB skin test since the start of the calendar year. Due to the same animals being sampled in different DVO areas, the 'Total' is not the sum of the DVO figures.
C19	No. animals TB tested in previous 12 months	Animals identified as having had at least one TB skin test during the last 12 month period from the above month. Due to the same animals being sampled in different DVO areas, the 'Total' is not the sum of the DVO figures.
C24	No. animals TB tested in previous 13-24 months	Animals identified as having had at least one TB skin test during the last 13-24 months from the above month. Due to the same animals being sampled in different DVO areas, the 'Total' is not the sum of the DVO figures
C26	No. animals TB tested in 2005	Animals identified as having had at least one TB skin test during the calendar year. Due to the same animals being sampled in different DVO areas, the 'Total' is not the sum of the DVO figures.
C25	No. animals TB tested in 2004	Animals identified as having had at least one TB skin test during the calendar year. Due to the same animals being sampled in different DVO areas, the 'Total' is not the sum of the DVO figures.
C22	No. animals TB tested in 2008	Animals identified as having had at least one TB skin test during the calendar year. Due to the same animals being sampled in different DVO areas, the 'Total' is not the sum of the DVO figures.
C20	No. animals TB tested in 2007	Animals identified as having had at least one TB skin test during the calendar year. Due to the same animals being sampled in different DVO areas, the 'Total' is not the sum of the DVO figures.
C21	No. animals TB tested in 2006	Animals identified as having had at least one TB skin test during the calendar year. Due to the same animals being sampled in different DVO areas, the 'Total' is not the sum of the DVO figures.

Explanatory Comments for Tuberculosis Statistics - D. Results

Ref	Data Title	Explanation
D1	No. of herds with TB reactors during month	A herd is included in this figure if the herd number had a TB skin test reactor during the above month.
D2	No. of new reactor herds during month	A herd is defined as being a TB reactor herd if it had at least one TB reactor animal in that month and no TB reactor animals during the previous 12 months.
D3	No. of new reactor herds since start of year	= Since 1st January
D4	No. of new reactor herds in the previous 12 months	Last 12 month period from the above month.
D26	No. of new reactor herds in previous 13-24 months	Last 13-24 month period from the above month.
D5	No. of TB reactor animals during month	A TB reactor animal is defined as an animal where the manual interpretation field for a skin test is positive ('P') with the first test date being taken as the time at which the animal became a reactor. Currently animals with lesions at routine slaughter (*LRS*) are not taken into account
D6	No. of TB reactor animals since start of year	= Since 1st January
D7	No. of reactor animals in the previous 12 months	Last 12 month period from the above month.
D27	No. of reactor animals in previous 13-24 months	Last 13-24 month period from the above month.
D8	Herd Prevalence (%)	Number of herds with a TB reactor during the above month as a proportion of cattle herds which have presented cattle for a TB herd test during the same time period.
D20	Cumulative herd incidence in year (%)	Number of NEW reactor herds since the start of the calendar year as a proportion of cattle herds which have presented cattle for a TB herd test during the same time period.
D9	Annual herd incidence over the last 12 months (%)	Number of NEW reactor herds during the last 12 months as a proportion of cattle herds which have presented cattle for a TB herd test during the same time period.
D28	Annual herd incidence over the last 13-24 months (%)	Number of NEW reactor herds during the last 13-24 months as a proportion of cattle herds which have presented cattle for a TB herd test during the same time period.
D38	2005 Herd Incidence (%)	Number of NEW reactor herds during the year as a proportion of cattle herds which have presented cattle for a TB herd test during the same time period.
D30	2004 Herd Incidence (%)	Number of NEW reactor herds during the year as a proportion of cattle herds which have presented cattle for a TB herd test during the same time period.
D16	2008 Herd Incidence (%)	Number of NEW reactor herds during the year as a proportion of cattle herds which have presented cattle for a TB herd test during the same time period.
D10	2007 Herd Incidence (%)	Number of NEW reactor herds during the year as a proportion of cattle herds which have presented cattle for a TB herd test during the same time period.
D11	2006 Herd Incidence (%)	Number of NEW reactor herds during the year as a proportion of cattle herds which have presented cattle for a TB herd test during the same time period.
D21	Cumulative animal incidence in year (%)	Number of reactor animals during the above month as a proportion of cattle which have been presented for a TB test during the same time period.
D12	Annual animal incidence over the last 12 months (%)	Number of reactor animals during the last 12 months as a proportion of cattle which have been presented for a TB test during the same time period.
D29	Annual animal incidence over the last 13-24 months (%)	Number of reactor animals during the last 13-24 months as a proportion of cattle which have been presented for a TB test during the same time period.
D39	2005 Animal Incidence (%)	Number of reactor animals during the year as a proportion of cattle which have been presented for a TB herd test during the same time period.
D31	2004 Animal Incidence (%)	Number of reactor animals during the year as a proportion of cattle which have been presented for a TB herd test during the same time period.
D15	2008 Animal Incidence (%)	Number of reactor animals during the year as a proportion of cattle which have been presented for a TB herd test during the same time period.
D13	2007 Animal Incidence (%)	Number of reactor animals during the year as a proportion of cattle which have been presented for a TB herd test during the same time period.
D14	2006 Animal Incidence (%)	Number of reactor animals during 2006 as a proportion of cattle which have been presented for a TB herd test during the same time period.

D34	APT during current month	= The reactor disclosure rate per 1,000 animal tests current calendar month.
D22	APT since start of year	The reactor disclosure rate per 1,000 animal tests since the start of the calendar year.
D17	Current 12 month moving average APT	The reactor disclosure rate per 1,000 animal tests. Current refers to the rate over the last 12 months.
D42	2006 APT	The reactor disclosure rate per 1,000 animal tests during the calendar year.
D40	2005 APT	The reactor disclosure rate per 1,000 animal tests during the calendar year.
D32	2004 APT	The reactor disclosure rate per 1,000 animal tests during the calendar year.
D18	2008 APT	The reactor disclosure rate per 1,000 animal tests during the calendar year.
D19	2007 APT	The reactor disclosure rate per 1,000 animal tests during the calendar year.
D23	No. negative in contacts since start of year	Number of animals taken as negative in contacts since the start of the year
d46	No. Negative in contacts over last 12 months (%)	= Number of negative in contacts during the last 12 months
D43	No. negative in contacts during 2006	Number of animals taken as negative in contacts during the year
D41	No. negative in contacts during 2005	Number of animals taken as negative in contacts during the year
D33	No. negative in contacts during 2004	Number of animals taken as negative in contacts during the year
D24	No. negative in contacts during 2008	Number of animals taken as negative in contacts during the year
D25	No. negative in contacts during 2007	Number of animals taken as negative in contacts during the year
D37	Reactor removal time 2008	Figures given are median values for working days estimated from calendar days (calendar days multiplied by 0.685). Reactors which are not yet slaughtered or where they they were first declared as reactors at slaughter are excluded.
D45	Reactor removal time 2007	Figures given are median values for working days estimated from calendar days (calendar days multiplied by 0.685). Reactors which are not yet slaughtered or where they they were first declared as reactors at slaughter are excluded.
D35	Reactor removal time 2006	Figures given are median values for working days estimated from calendar days (calendar days multiplied by 0.685). Reactors which are not yet slaughtered or where they they were first declared as reactors at slaughter are excluded.
D44	Reactor removal time 2005	Figures given are median values for working days estimated from calendar days (calendar days multiplied by 0.685). Reactors which are not yet slaughtered or where they they were first declared as reactors at slaughter are excluded.
D36	Reactor removal time 2009	Figures given are median values for working days estimated from calendar days (calendar days multiplied by 0.685). Reactors which are not yet slaughtered or where they they were first declared as reactors at slaughter are excluded.

Explanatory Comments for LRS Data

E1	No. TB animals found at routine slaughter in current year	Animals where M. bovis was cultured from TB-like lesions found at routine slaughter (LRS) during the year that were not identified as TB reactor animals
E19	No. TB animals found at routine slaughter in last 12 months	Animals where M. bovis was cultured from TB-like lesions found at routine slaughter (LRS) during the last 12 months that were not identified as TB reactor animals
E20	No. TB animals found at routine slaughter in last 13-24 months	Animals where M. bovis was cultured from TB-like lesions found at routine slaughter (LRS) during the last 12-24 months that were not identified as TB reactor animals
E6	No. TB animals found at routine slaughter in 2008	Animals where M. bovis was cultured from TB-like lesions found at routine slaughter (LRS) during the year that were not identified as TB reactor animals
E20	No. TB animals found at routine slaughter in 2007	Animals where M. bovis was cultured from TB-like lesions found at routine slaughter (LRS) during the year that were not identified as TB reactor animals
E3	No. TB animals found at routine slaughter in 2006	Animals where M. bovis was cultured from TB-like lesions found at routine slaughter (LRS) during the year that were not identified as TB reactor animals
E4	No. TB animals found at routine slaughter in 2005	Animals where M. bovis was cultured from TB-like lesions found at routine slaughter (LRS) during the year that were not identified as TB reactor animals
E5	No. TB animals found at routine slaughter in 2004	Animals where M. bovis was cultured from TB-like lesions found at routine slaughter (LRS) during the year that were not identified as TB reactor animals
E7	No. herds with TB found at routine slaughter in current year	Herds where M. bovis was cultured from TB-like lesions found in at least one animal at routine slaughter (LRS) during the year
E21	No. herds with TB found at routine slaughter in last 12 months	Herds where M. bovis was cultured from TB-like lesions found in at least one animal at routine slaughter (LRS) during the last 12 months
E22	No. herds with TB found at routine slaughter in last 13-24 months	Herds where M. bovis was cultured from TB-like lesions found in at least one animal at routine slaughter (LRS) during the last 13-24 months
E12	No. herds with TB found at routine slaughter in 2008	Herds where M. bovis was cultured from TB-like lesions found in at least one animal at routine slaughter (LRS) during the year
E8	No. herds with TB found at routine slaughter in 2007	Herds where M. bovis was cultured from TB-like lesions found in at least one animal at routine slaughter (LRS) during the year
E9	No. herds with TB found at routine slaughter in 2006	Herds where M. bovis was cultured from TB-like lesions found in at least one animal at routine slaughter (LRS) during the year
E10	No. herds with TB found at routine slaughter in 2005	Herds where M. bovis was cultured from TB-like lesions found in at least one animal at routine slaughter (LRS) during the year
E11	No. herds with TB found at routine slaughter in 2004	Herds where M. bovis was cultured from TB-like lesions found in at least one animal at routine slaughter (LRS) during the year
E13	% of TB animals that were LRS in current year	Herds where M. bovis was cultured from TB-like lesions found in at least one animal at routine slaughter (LRS) during the year
E23	% of TB animals that were LRS in last 12 months	Number of confirmedLRS animals divided by the number of TB reactors and confirmed LRS animals during the year expressed as a %
E24	% of TB animals that were LRS in last 13-24 months	Number of confirmedLRS animals divided by the number of TB reactors and confirmed LRS animals during the year expressed as a %
E18	% of TB animals that were LRS in 2008	Number of confirmedLRS animals divided by the number of TB reactors and confirmed LRS animals during the year expressed as a %
E14	% of TB animals that were LRS in 2007	Number of confirmedLRS animals divided by the number of TB reactors and confirmed LRS animals during the year expressed as a %
E15	% of TB animals that were LRS in 2006	Number of confirmedLRS animals divided by the number of TB reactors and confirmed LRS animals during the year expressed as a %
E16	% of TB animals that were LRS in 2005	Number of confirmedLRS animals divided by the number of TB reactors and confirmed LRS animals during the year expressed as a %
E17	% of TB animals that were LRS in 2004	Number of confirmedLRS animals divided by the number of TB reactors and confirmed LRS animals during the year expressed as a %