

# Food chain information (FCI) & collection and communication of inspection results (CCIR)

## Chapter overview

---

**In this chapter** The table below lists the sections and annexes in this chapter.

---

<b>Section</b>	<b>See Page</b>
Section 1 – Introduction	1-1
Section 2 – Food chain information (FCI)	2-1
Section 3 – Collection and communication of inspection results (CCIR)	3-1
Section 4 – Verification and enforcement	4-1

---

## Section 1 - Introduction

### Section overview

---

**In this section** The table below lists the topics in this section.

---

<b>Topic</b>	<b>See Page</b>
Purpose of FCI and CCIR	1-2
Information cycle (FCI and CCIR)	1-3
Legislation	1-4
VPHU role	1-6

---

## Purpose of FCI & CCIR

---

### **Purpose of food chain information (FCI)**

Food chain information (FCI) is a key element in the whole-chain approach to food safety controls. FCI is a valuable source of information for decision making in relation the potential hazards presented by the animals as part of the slaughterhouse FBO's HACCP-based food safety management systems.

Livestock producers are required to provide the slaughterhouse FBO with FCI. The slaughterhouse FBO checks the FCI and passes it onto the OV, highlighting any significant information they have identified. The OV must analyse the information and use it as an integral part of the inspection procedures.

FCI assists the slaughterhouse FBO to make decisions about accepting animals for slaughter and the organisation of slaughter operations.

FCI assists the OV to determine the required inspection procedures.

---

### **Purpose of collection and communication of inspection results (CCIR)**

The collection and communication of inspection results (CCIR) provides valuable information to the farmer and the farmer's veterinarian, allowing actions to be taken on farm to improve animal health and welfare, which it is intended, will result in improvements in food safety.

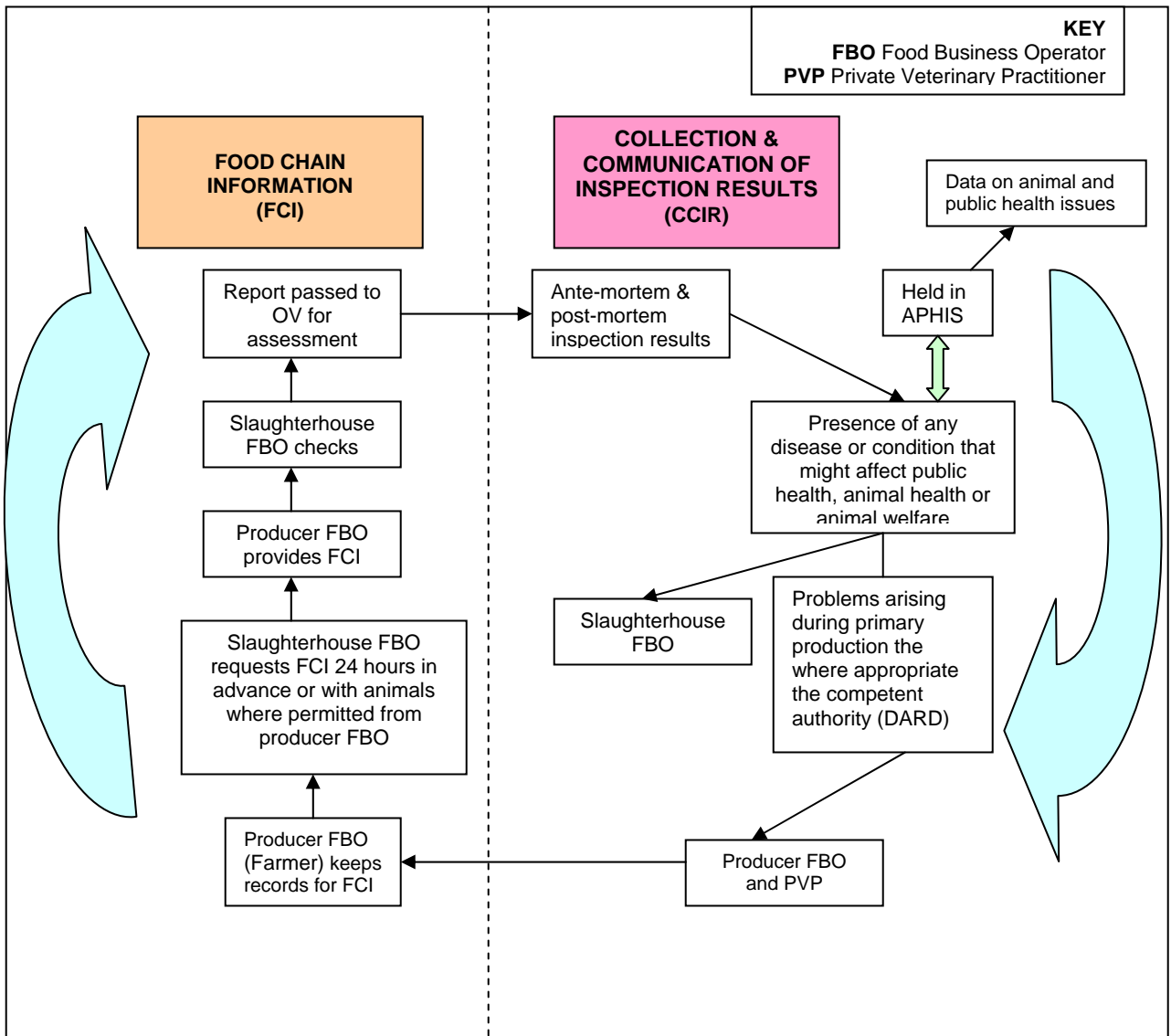
Where ante or post-mortem inspections reveal the presence of any disease or condition that might affect public or animal health or indicate compromised animal welfare, the OV must inform the slaughterhouse FBO.

Where ante and/or post-mortem inspections reveal problems, which arose during primary production, the OV must notify the farmer and the farmer's veterinarian for the holding of provenance. This notification will be achieved by making the information available to the farmer and the PVP through AHPIS-on-line.

DARD and FSA will use the data for animal and public health disease surveillance.

---

## Information cycle (FCI & CCIR)



## Legislation

### Regulations

The information cycle (FCI and CCIR) comes from the requirements in EC Regulations 852/2004, 853/2004 and 854/2004.

Regulation	Requirement	Responsibility
852/2004, Annex I, Part A, III.	Records to be kept by primary production FBOs e.g. those rearing animals.	FBO for the holding of provenance
2074/2005 Annex I, Section I	Primary production FBO must ensure that FCI is accessible to the slaughterhouse.	FBO despatching animals for slaughter
853/2004, Annex II, Section III.	Slaughterhouse FBOs must: <ul style="list-style-type: none"> <li>• request, receive and act upon FCI from the primary production FBO.</li> <li>• evaluate the information and</li> <li>• notify the OV of anything that gives rise to concerns before ante mortem inspection.</li> </ul>	Slaughterhouse FBO
854/2004, Annex I, Section I, Chapter II, A  Annex I, Section II, Chapter I.	OV must: <ul style="list-style-type: none"> <li>• check and analyse the FCI and</li> <li>• take account of the FCI when carrying out ante and post-mortem inspections.</li> <li>• provide data from the ante and post-mortem inspections to               <ul style="list-style-type: none"> <li>○ the slaughterhouse FBO and</li> <li>○ back to the primary production FBO when the inspections reveal the presence of any disease or condition that might affect public or animal health, or compromise animal welfare.</li> </ul> </li> </ul>	OV

### FCI implementing measures 2074/2005

Annex I, Section II, Chapter I of Regulation (EC) No. 2074/2005 provides implementing arrangements concerning FCI. The competent authority must to inform the dispatching FBO of the minimum elements of FCI to be supplied to the slaughterhouse.

*Continued on next page*

## Legislation, continued

---

**FCI transitional arrangements 2076/2005**

By way of derogation from the requirements laid down in 853/2004 Annex II, Section III, Member States shall progressively implement the FCI requirements in various sectors in accordance with the table below.

The stated dates are for full implementation.

---

<b>Species</b>	<b>Date for full FCI implementation</b>
Poultry	From 01 January 2006
Pigs	From 01 January 2008
Horses and veal calves	From 01 January 2009
Other	From 01 January 2010

---

**Implementation of FCI/CCIR**

For poultry, FCI and CCIR will be fully implemented as from 01 January 2006.

For the other species:

- FCI is required for animals of other species where they are known to be or suspected to be injured or showing signs of abnormality.
  - CCIR will be achieved by making the information available to the farmer and the PVP through AHPIS-on-line. For any species not registered on APHIS alternative communication arrangements should be made.
-

## VPHU Role

Inspection and verification	By	Frequency
Review FCI and use information for ante mortem inspection	OV (MI if ante mortem at holding)	One per batch from a producer
Carrying out ante-mortem inspection & recording data on APHIS / other	OV	Individual animals Batches of poultry
Carrying out post-mortem inspection & recording data on APHIS / other	OV or MI OV for abnormal	Individual carcasses and offals (cattle and horses) batches for other species
For poultry and species not covered by APHIS completing inspection results feedback form with OV comment	OV	Exception based

## Section 2 - Food chain information

### Section overview

---

**In this section** The table below lists the topics in this section.

---

<b>Topic</b>	<b>Page</b>
FCI implementation	2-2
FCI receipt and check	2-4

---

## FCI implementation

---

### FCI implementation for poultry

From 01 January 2006 poultry is the only species requiring FCI to be supplied.

The information to be provided by the FBO rearing animals (farmer or producer), not less than 24 hours before the arrival of the poultry at the slaughterhouse, is covered in the MIG.

Reference: MIG, Part 2, Chapter 8, Raw materials, C. Food Chain Information and annex 2 – model document for poultry FCI <http://www.foodstandards.gov.uk/foodindustry/meat/draftguidehygiene/meat>

Regulation: 853/2004, Annex II, Section III, 3 (a) to (h).

---

### Poultry slaughterhouse FBO responsibility

FBOs processing poultry must request, receive, check and act on FCI.

FCI should arrive at least 24 hours before delivery of the birds unless ante mortem takes place on the holding when the FCI can accompany the poultry to the slaughterhouse.

The way the FBO will act on the FCI will be part of his HACCP-based procedures.

The FBO must make the FCI available to the OV, 24 hours before delivery, highlighting any issues identified by their checks on the FCI.

The FBO must not slaughter poultry without FCI unless permitted to do so by the OV.

---

### FCI implementation for species other than poultry

For species other than poultry there will be a phased implementation but until FCI is fully implemented the slaughterhouse FBO and the OV should receive the information contained in the following table:

---

*Continued on next page*

## FCI implementation, continued

Species	Information to accompany the animals before FCI is fully implemented	Form
Pigs	<ul style="list-style-type: none"> <li>if known or suspected to be injured or showing signs of abnormality</li> </ul>	MIG, Part 2, Chapter 8, Raw materials, annex 4
Cattle	<ul style="list-style-type: none"> <li>if coming from holdings under restriction for Tuberculosis or Brucellosis</li> <li>if known or suspected to be injured or showing signs of abnormality</li> </ul>	MIG, Part 2, Chapter 8, Raw materials, annex 3
Sheep and goats	<ul style="list-style-type: none"> <li>if known or suspected to be injured or showing signs of abnormality</li> </ul>	MIG, Part 2, Chapter 8, Raw materials, annex 5
Farmed game	No requirement for FCI until 01 January 2010	
Horses	<p>No requirement for FCI until 01 January 2009</p> <p>Existing regulations about horse passports cover veterinary medicinal treatments and continue to apply.</p>	Horse passport
Hunted animals	No FCI required (only hunter's declaration)	MIG, Part 2, Chapter 8, Raw materials, page 28

## FCI receipt and check

---

### FCI receipt by the OV

The OV should receive the FCI report from the slaughterhouse FBO at least 24 hours in advance of arrival of the animals.

Note: The Transitional Arrangements Regulation (EC) 2076/2005 gives the competent authority the option to permit FCI to accompany animals to slaughter. FSA considers that, because of the organisation of the poultry industry and the need to use FCI to plan the slaughter of flocks, it is necessary that FCI is received in advance of the arrival of the poultry at the slaughterhouse.

FSA is encouraging slaughterhouse FBOs to treat the 24 hours period as a minimum period and to request FCI further in advance if this is necessary to make appropriate arrangements for specific flocks (e.g. to plan the slaughter of a flock which has tested positive for Salmonellae at the end of a shift/day).

---

### OV role

The OV is to check and analyse relevant information from the FCI report and may take any of the following decisions:

- animals with a disease or condition that may be transmitted to animals or humans through the handling or eating of meat must be rejected for slaughter and killed separately under conditions such that other animals cannot be contaminated and declared unfit for human consumption
  - change slaughterhouse process (e.g. reduce line speed or increase number of inspectors)
  - slaughter animals/ batch of animals last (e.g. if known to carry a pathogenic organism)
  - detain animal(s) or carcase(s) for further testing.
- 

*Continued on next page*

## **FCI receipt and check, continued**

---

**Animals with  
no FCI**

The FBO should notify the OV if poultry arrive without FCI. The OV may allow the poultry to undergo slaughter if FCI is not available, but it must be provided before the carcasses are approved for human consumption. Pending a final judgement, such carcasses and related offal must be stored separately from other meat.

If relevant FCI is not available within 24 hours of birds arriving at the slaughterhouse, all meat from the birds is to be declared unfit for human consumption.

Regulation: 854/2004, Annex I, section II, Chapter II

---

## Section 3 - Collection and communication of inspection results

### Section overview

---

**In this section**     The table below lists the topics in this section.

---

Topic	See Page
Recording of inspection data – poultry	3-2
Recording of inspection data – red meat	3-3

---

**Duty of the VPHU**

If inspections reveal the presence of any disease or condition that might affect public or animal health or compromise animal welfare the OV is to inform the slaughterhouse FBO.

Where the problem arose during primary production, the OV is to inform:

- the farmer
  - the farmer’s veterinary surgeon
  - where appropriate DARD (e.g. notifiable disease).
  - the competent authority of the Member State where animals were raised, if different to that of slaughter.
- 

**Recording of data**

Results of ante and post-mortem inspections must be recorded accurately. Information must be recorded on APHIS wherever possible. Where APHIS does not cater for a particular species the VPHU team should have a system in place to record the inspection results identified clearly to the batch of animals.

The OV must be satisfied with the arrangements for collecting the data at all points on the line. The MI must report any difficulties with recording to the OV.

The slaughterhouse FBO is obliged to present animals for ante and post mortem as required by the OV to facilitate inspection. This includes the facilitation of recording of inspection findings.

---

## Recording of inspection data - poultry

---

### Ante-mortem inspection

Complete the PFCI form and the ante-mortem findings on the avian ante mortem inspection record (VPH 07) with details of the producer and batch identifier so information regarding the animals can be sent back to the correct producer.

---

### Post-mortem inspection

Results of post-mortem inspection should be recorded on the avian post mortem inspection record (VPH 10).

Note: When meat is rejected for more than one reason, all conditions observed must be recorded.

Example: The condemnation summary must record both pericarditis and air sacculitis in a single turkey carcass when both conditions are present.

---

### Database

During 2006 APHIS functionality regarding poultry will be reviewed and enhanced as necessary to accommodate CCIR for poultry.

---

### Before the database is set up

Until the database is created, a copy of the avian post mortem inspection record (VPH 10) should be given to the slaughterhouse FBO to be passed to the producer.

---

## Recording of inspection data – red meat species

---

### Ante-mortem inspection

APHIS must be used to record ante mortem findings.

For species not yet covered by APHIS e.g. horses, farmed deer, complete the ante mortem inspection record (VPH 06).

---

### Post-mortem inspection

APHIS must be used to record post mortem findings.

For species not yet covered by APHIS results of post-mortem inspection should be recorded on the post-mortem forms (VPH 09).

Note: When meat is rejected for more than one reason, all conditions observed must be recorded.

Example: The condemnation summary must record both mastitis and metritis in a single carcass when both conditions are present.

---

## Section 4 - Verification and enforcement

### Section overview

---

**In this section** The table below lists the topics in this section.

---

<b>Topic</b>	<b>Page</b>
Verification guidelines	4-2
Enforcement	4-3

---

## Verification guidelines

Process	Responsibility
FCI is requested for all batches of poultry including imported poultry sent to slaughter.	Slaughterhouse FBO
FCI arrives 24 hours in advance of poultry unless ante mortem at holding, then received with birds. NB imported poultry must have FCI in advance, they cannot receive ante mortem on farm	Slaughterhouse FBO
FCI is requested for cattle, pigs and sheep where relevant (injury, showing signs of abnormality)	Slaughterhouse FBO
FBO checks the FCI and acts upon it in accordance with his HACCP-based procedures.	Slaughterhouse FBO
FBO makes FCI available to the OV/MI and notifies them of any anomalies in FCI.	Slaughterhouse FBO
Birds are not slaughtered unless FCI is provided	Slaughterhouse FBO
Carcases and offal from birds with no FCI and slaughtered only with OV permission: <ul style="list-style-type: none"> <li>• FCI received within 24 hours of arrival of the birds and</li> <li>• detained, separate from other meat, until FCI available and carcasses approved for human consumption</li> </ul> or <ul style="list-style-type: none"> <li>• rejected for human consumption and disposed of as category 2 animal by-product if FCI not received within 24 hours.</li> </ul>	Slaughterhouse FBO and OV

**Recording verification**

The OV should initial the operational record (VPH 01 or 02) in the verification section to indicate verification of the FBO's responsibilities. Where the FBO has not fulfilled his obligations the incident should be recorded in the incident section of the operational report.

## Enforcement

---

### **FCI wrong or misleading**

The competent authority is to take appropriate action if it discovers that the accompanying records, documentation or other information do not correspond with the true situation on the holding of provenance or the true condition of the animals or aim deliberately to mislead the OV.

If FCI is absent or clearly deficient for conditions which have implications for animal or public health or welfare, (e.g. where the OV considers fraudulent information is being supplied by a producer) the OV must inform the DVO MIB who will consider the matter with VS CET regarding the appropriate follow up action.

Example: If serious conditions are found post-mortem which are not recorded on FCI on multiple occasions.

---